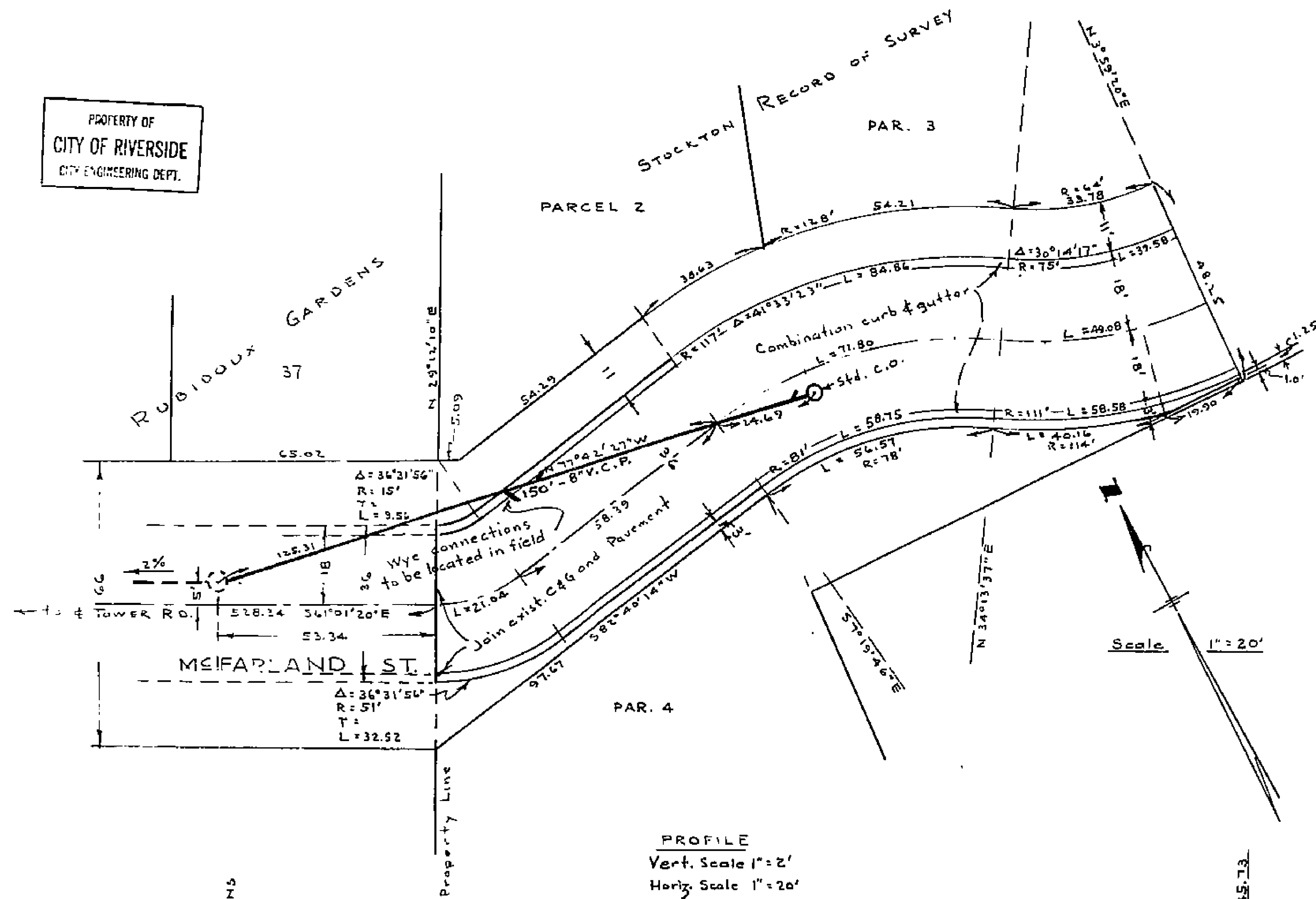


PROPERTY OF
CITY OF RIVERSIDE
CITY ENGINEERING DEPT.



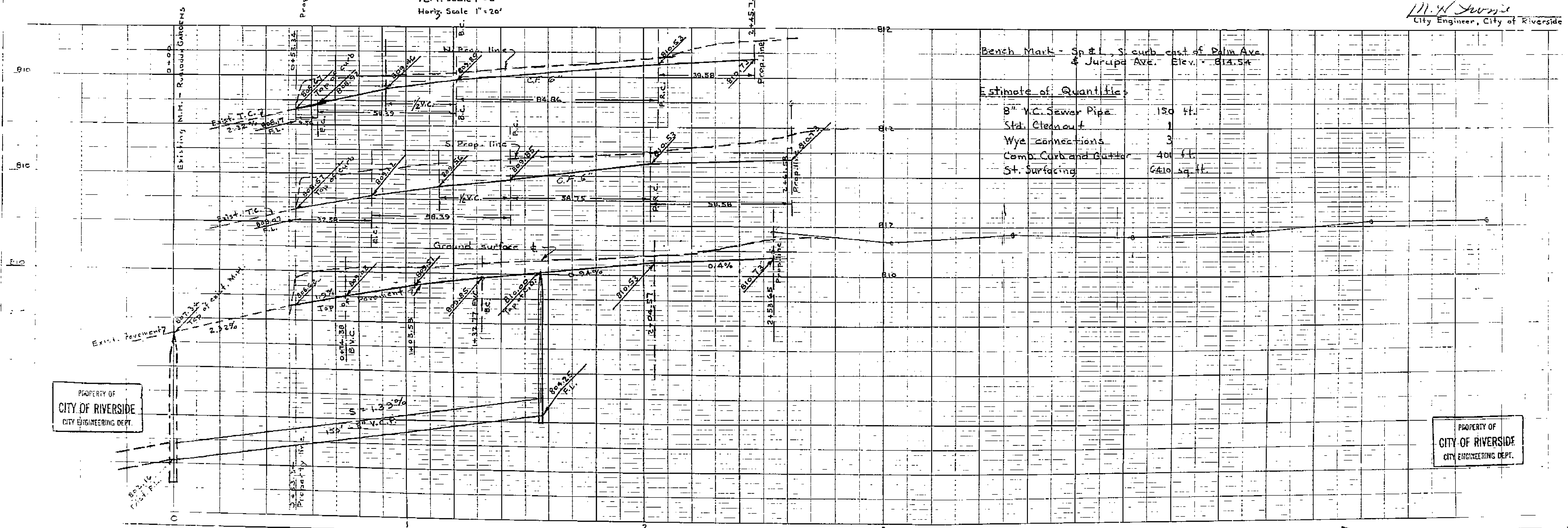
STREET PLAN AND PROFILE
SEWER PLAN AND PROFILE
FOR THE EASTERLY EXTENSION
OF
Mc FARLAND STREET
EAST OF
RUBIDOUX GARDENS
CITY OF RIVERSIDE - CALIFORNIA

PROPERTY OF
CITY OF RIVERSIDE
CITY ENGINEERING DEPT.

BY
ALBERT A. WEBB ASSOCIATES
CIVIL ENGINEERS
JULY 1953

PROFILE
Vert. Scale 1"=2'
Horiz. Scale 1"=20'

Approved this 14th day of August, 1953.
M. H. Juvic
City Engineer, City of Riverside



Bench Mark - Sp # 1, S. curb east of Palm Ave.
& Jurupa Ave. Elev. 814.54

Estimate of Quantities

8" V.C. Sewer Pipe	150 ft.
Std. Cleanout	1
Wye connections	3
Comb. Curb and Gutter	40 ft.
St. Surfacing	6410 sq. ft.

PROPERTY OF
CITY OF RIVERSIDE
CITY ENGINEERING DEPT.

PROPERTY OF
CITY OF RIVERSIDE
CITY ENGINEERING DEPT.

1107