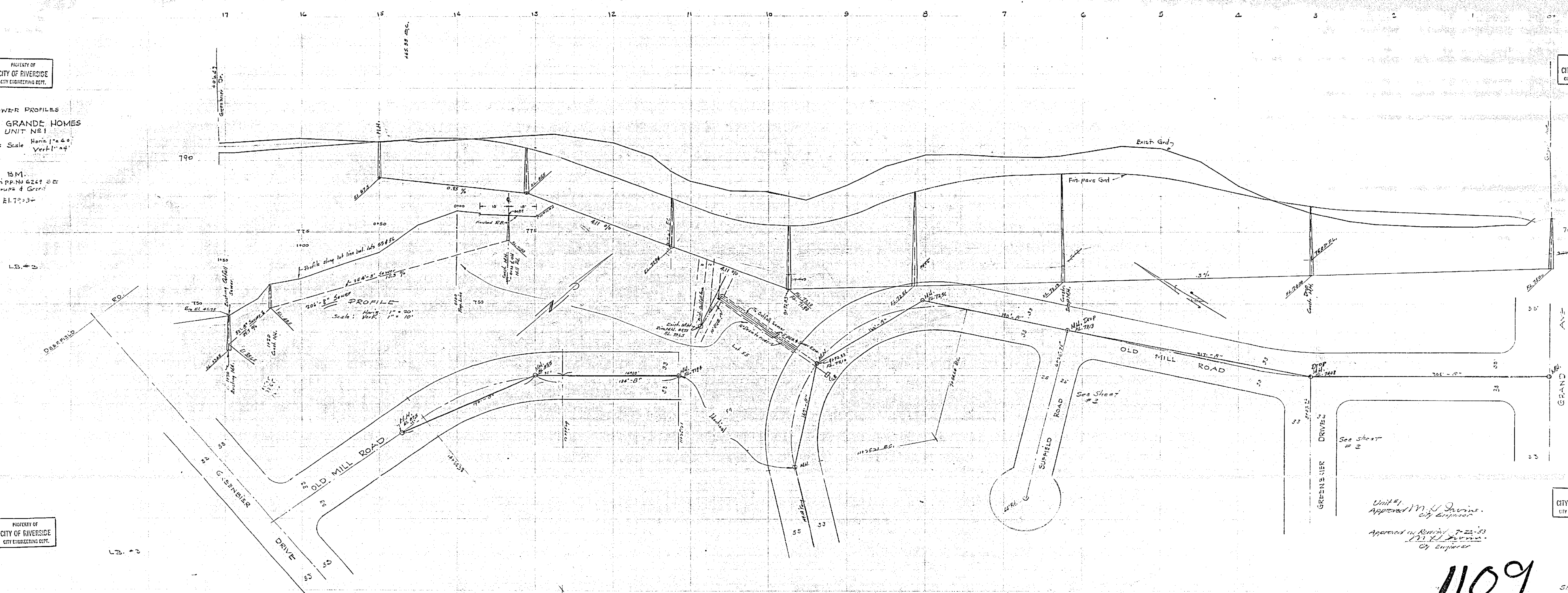


Profiles Scale Horiz 1" = 40'  
Vert 1" = 4'

B.M.  
Spk. in pp. No 6249 SE  
Cor. Jurupa & Grand  
E. 170234

PROPERTY OF  
CITY OF RIVERSIDE  
CITY ENGINEERING DEPT.



PROPERTY OF  
CITY OF RIVERSIDE  
CITY ENGINEERING DEPT.

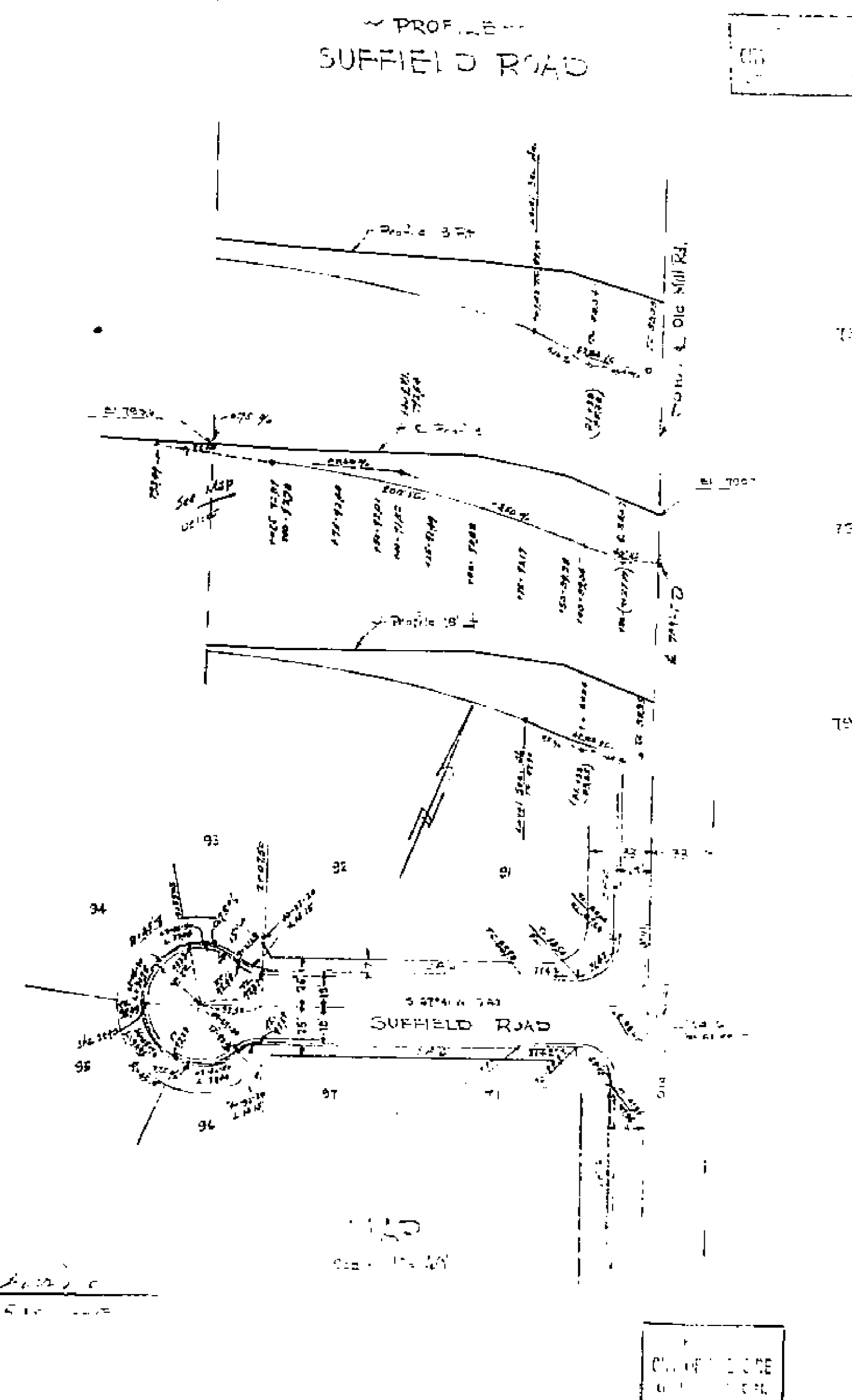
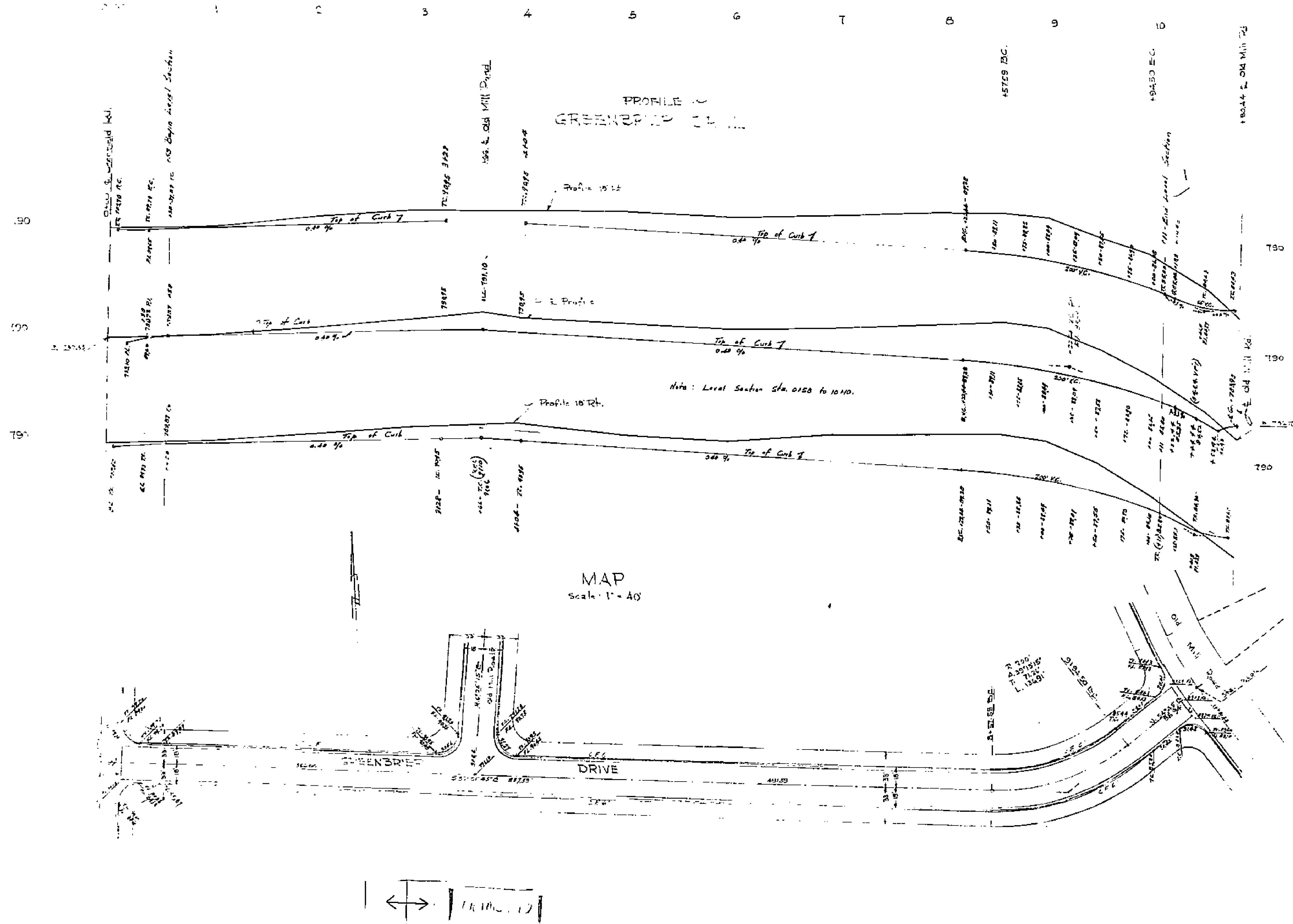
PROPERTY OF  
CITY OF INVERCLOUGH  
CITY ENGINEERING DEPT.

Unit #1  
Approved M. S. Irvine.  
City Engineer

Approved as Revised 7-22-53  
M. S. Irvine.  
City Engineer

1109

Sheet <sup>n</sup> 2 of 2 Sheets



Revised  
11/1/10

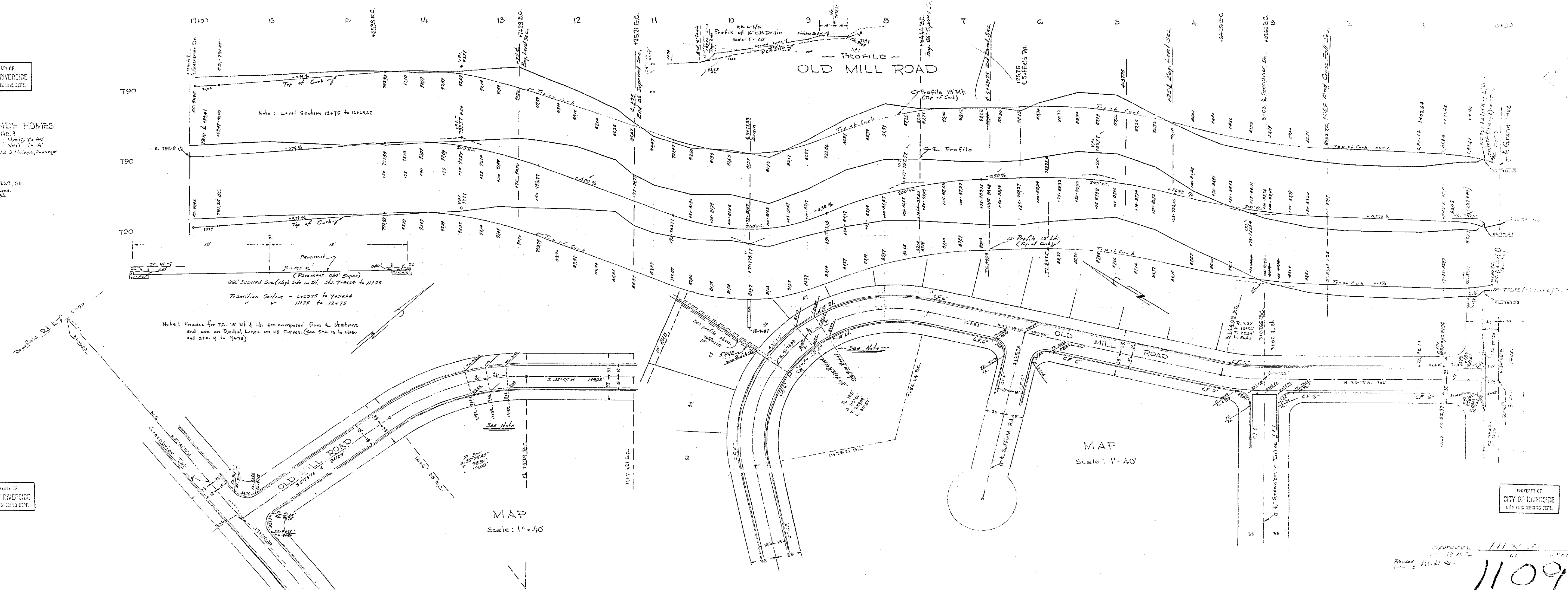
11/1/10  
CITY ENGINEER

1107

B.M.  
Spike in P.R. No. 6259, SE.  
Cor. Jurupa & Grand.  
El. 70084

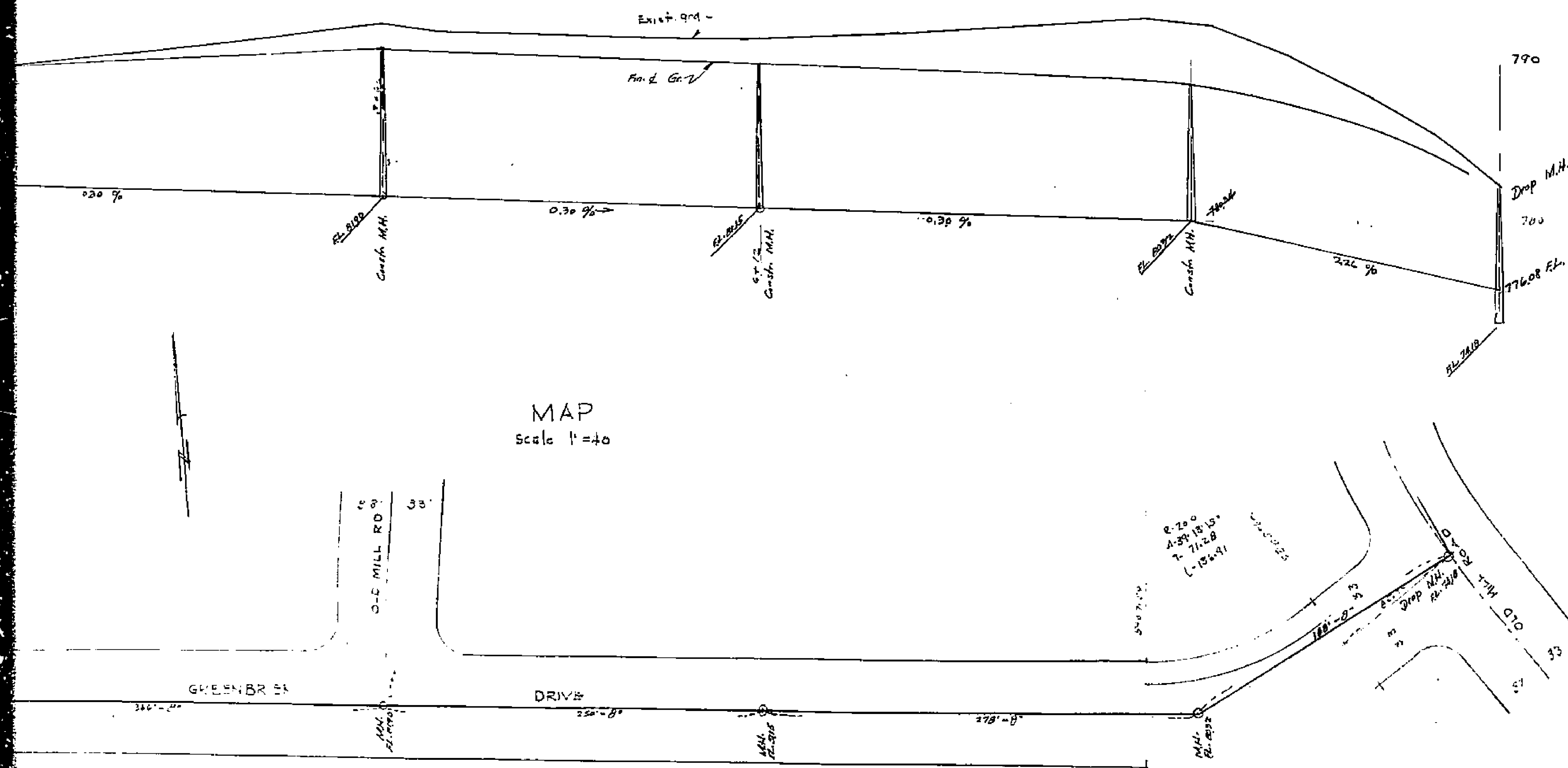
PROPERTY OF  
CITY OF RIVERSIDE  
CITY ENGINEERING DEPT.

PROPERTY OF  
CITY OF RIVERSIDE  
CITY ENGINEERING DEPT.



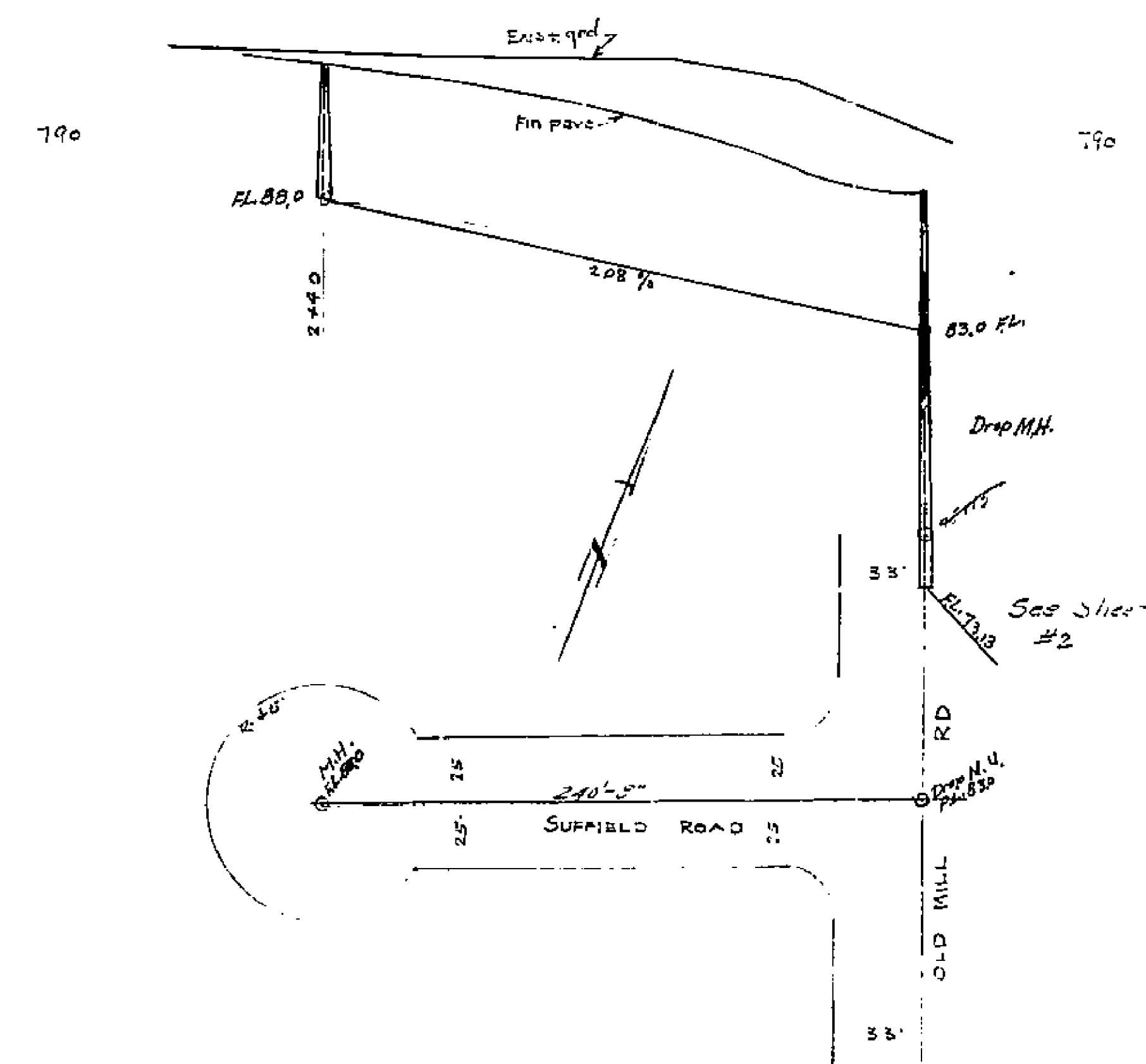
Approved: 11185  
 Date: 11/17/72 GR 11/17/72  
 Rental: 1109  
 (initials)

# PROFILE GREENBRIER DRIVE



←→ FRAME 1 of 2

# PROFILE SUFFIELD ROAD



MAP  
Scale 1"=40'  
Approved as Planned Highway  
M. J. Sullivan  
City Engineer  
Unit #1  
Approved M. J. Sullivan  
City Engineer

PROPERTY OF  
CITY OF RIVERSIDE  
CITY ENGINEERING DEPT.

1107



JURUPA GRANDE HOMES  
UNIT #1  
Oct. 1952      Scale: Vert. 1" = 4'  
Horiz. 1" = 40'  
Donald J. McKee, Licensed Surveyor

B.M.  
R.R. Spike in P.P. No. 6269  
Corner Jurupz Ave. & Grand Ave.  
Elev. 79084

— Profile —  
For Drain bet. Lots 55 and 56  
Scale: Vert. 1" = 4'  
Horiz. 1" = 20'

PROPERTY OF  
CITY OF RIVERSIDE  
CITY ENGINEERING DEPT.

Approved:  
Nov. 19, 1952.

M. H. Irvine  
CITY ENGINEER.

Approved as revised 7-22-1953.  
M. H. Irvine.

MAP  
Scale: 1" = 40'

1109

PROPERTY OF  
CITY OF RIVERSIDE  
CITY ENGINEERING DEPT.

JURUPA GRANDE HOMES UNIT #1  
BM RR 544 in Pole Point SE Cor Jurupa & 5th Ave  
Elev. 712.84  
Grade  
Here 1' = 20'  
1 inch = 20 feet

Sewer Ch. 2  
Jurupa Ave

PROPERTY OF  
CITY OF RIVERSIDE  
CITY ENGINEERING DEPT.

PROPERTY OF  
CITY OF RIVERSIDE  
CITY ENGINEERING DEPT.

PROPERTY OF  
CITY OF RIVERSIDE  
CITY ENGINEERING DEPT.

1107



IDE  
EPL

PLANS

DE HOMES

o 1

Hang. 1" = 40'

Vert. 1" = 4'

Stat 0+0

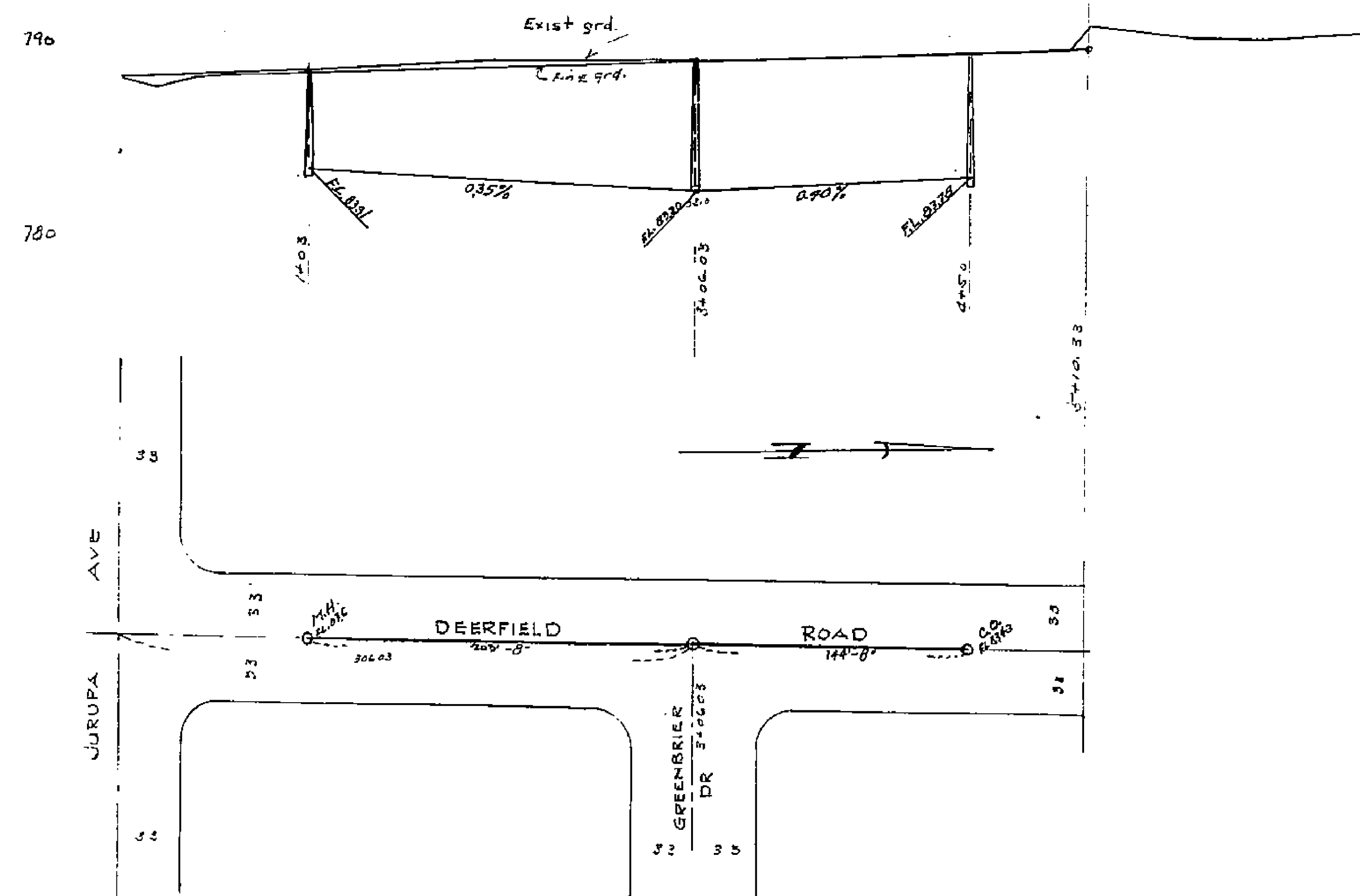
Grav

1.82

IDE

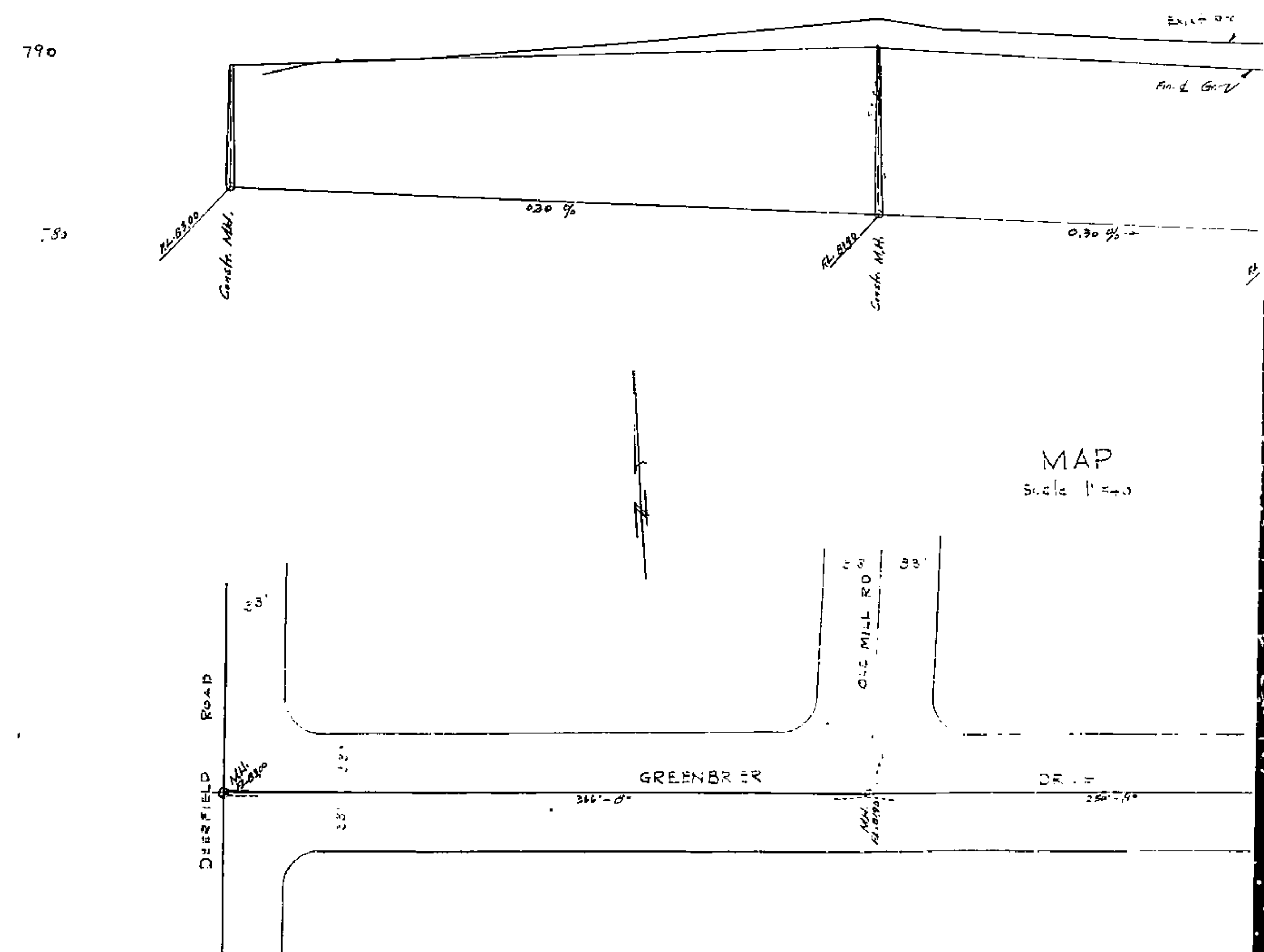
EPL

PROFILE  
DEERFIELD ROAD



MAP  
Scale: 1" = 40'

PROFILE  
GREENBRIER DR



MAP  
Scale: 1" = 40'

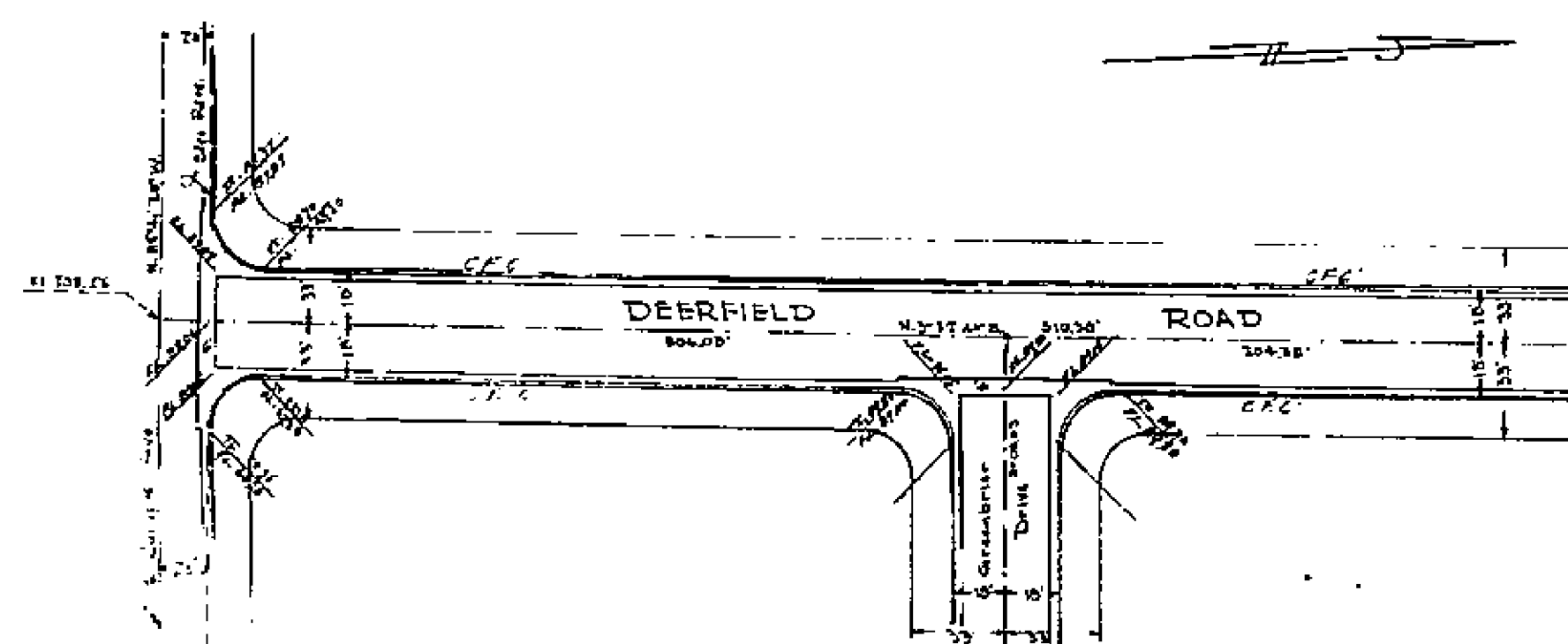
FRANK R. V. 2



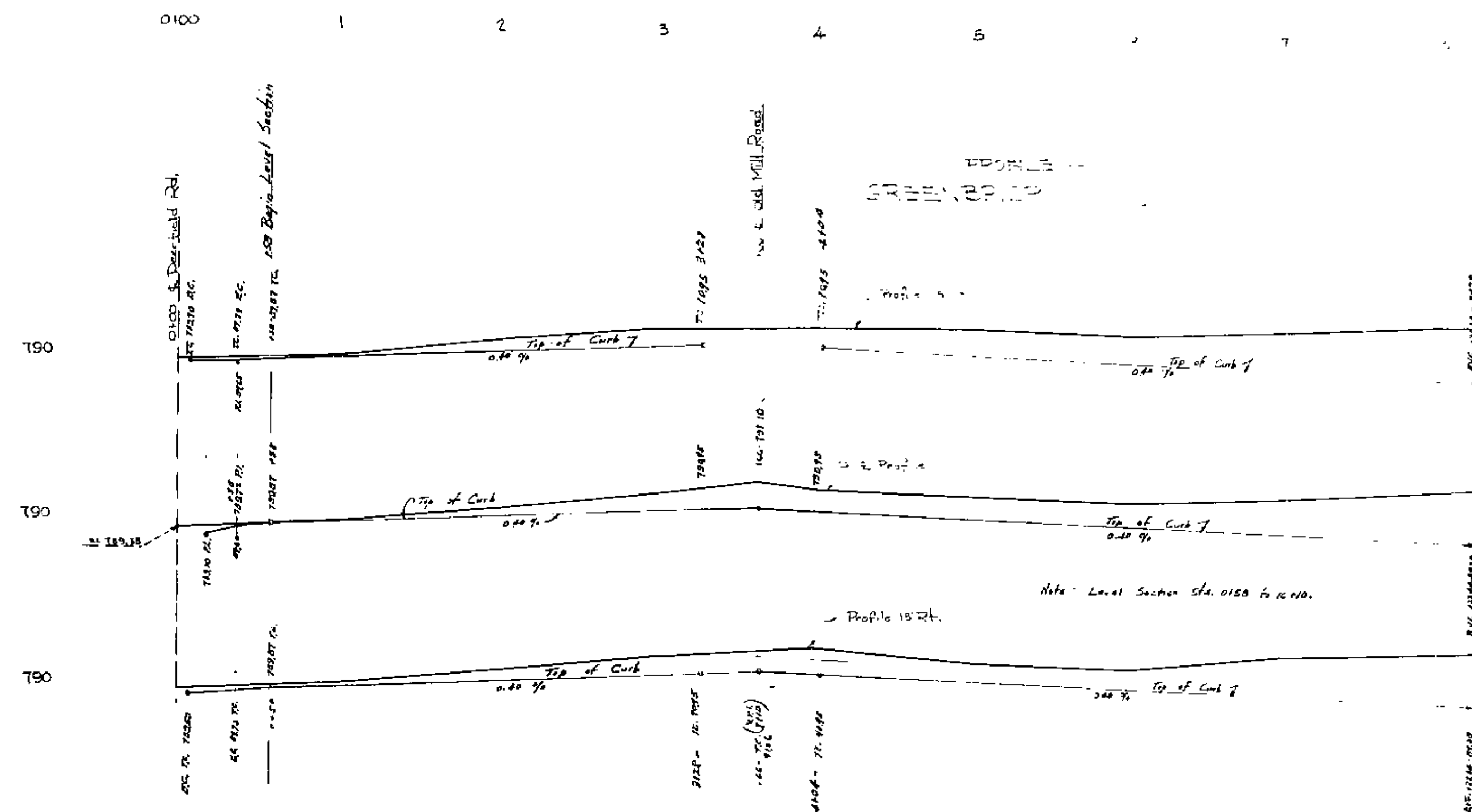
JURUPA GRANDE HOMES  
UNIT No. 1  
Profiles Scale: Horiz. 1" = 40'  
Vert. 1" = 4'  
Oct. 1950, Donald J. McKee, Surveyor

Dir  
Sylvester P. P. No. 2269, 22  
Cor. Joseph & Girard  
Bl. 790, 22

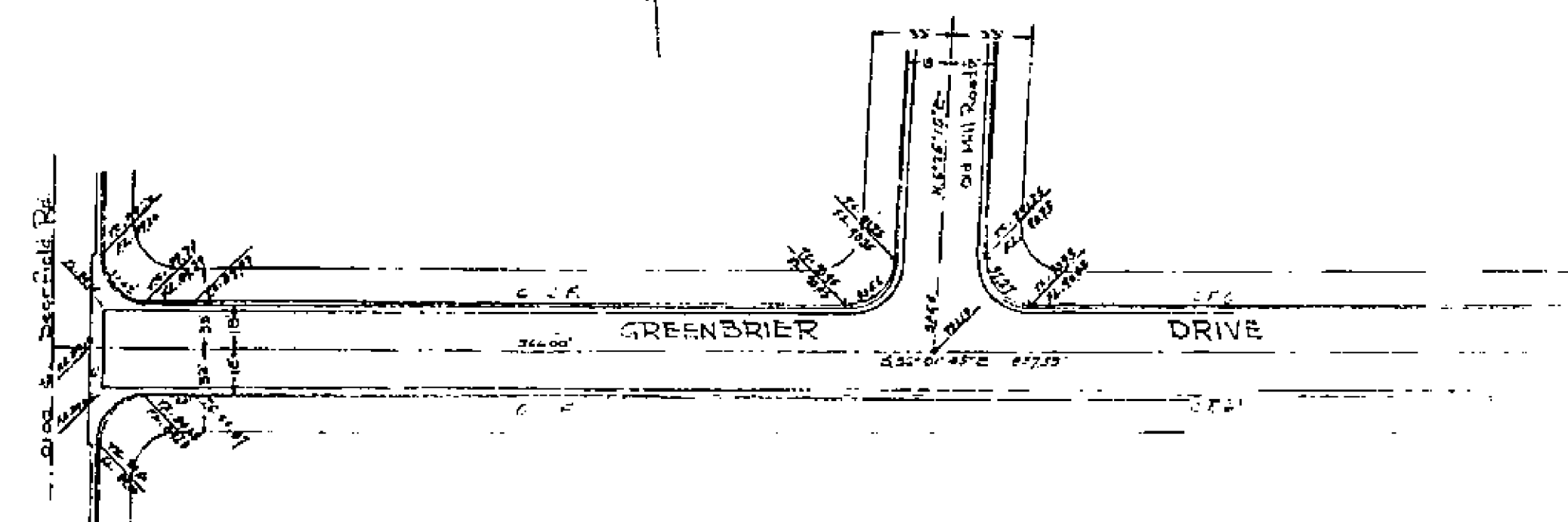
Hand-drawn profile of Deerfield Road. The drawing shows three profiles: Profile 10' Lk, Profile 10' Hk, and Profile 10' Lk. The road is labeled DEERFIELD ROAD. The drawing includes stationing and elevations. The top profile is labeled Profile 10' Lk. The middle profile is labeled Profile 10' Hk. The bottom profile is labeled Profile 10' Lk. The drawing also shows Top of Curve and Base of Curve points. The road is labeled DEERFIELD ROAD. The drawing is dated 10/10/10 and 10/10/10.



MAP  
Scale: 1" = 40'



MAP  
Scale: 1" = 40'



$F \uparrow$   $\downarrow$