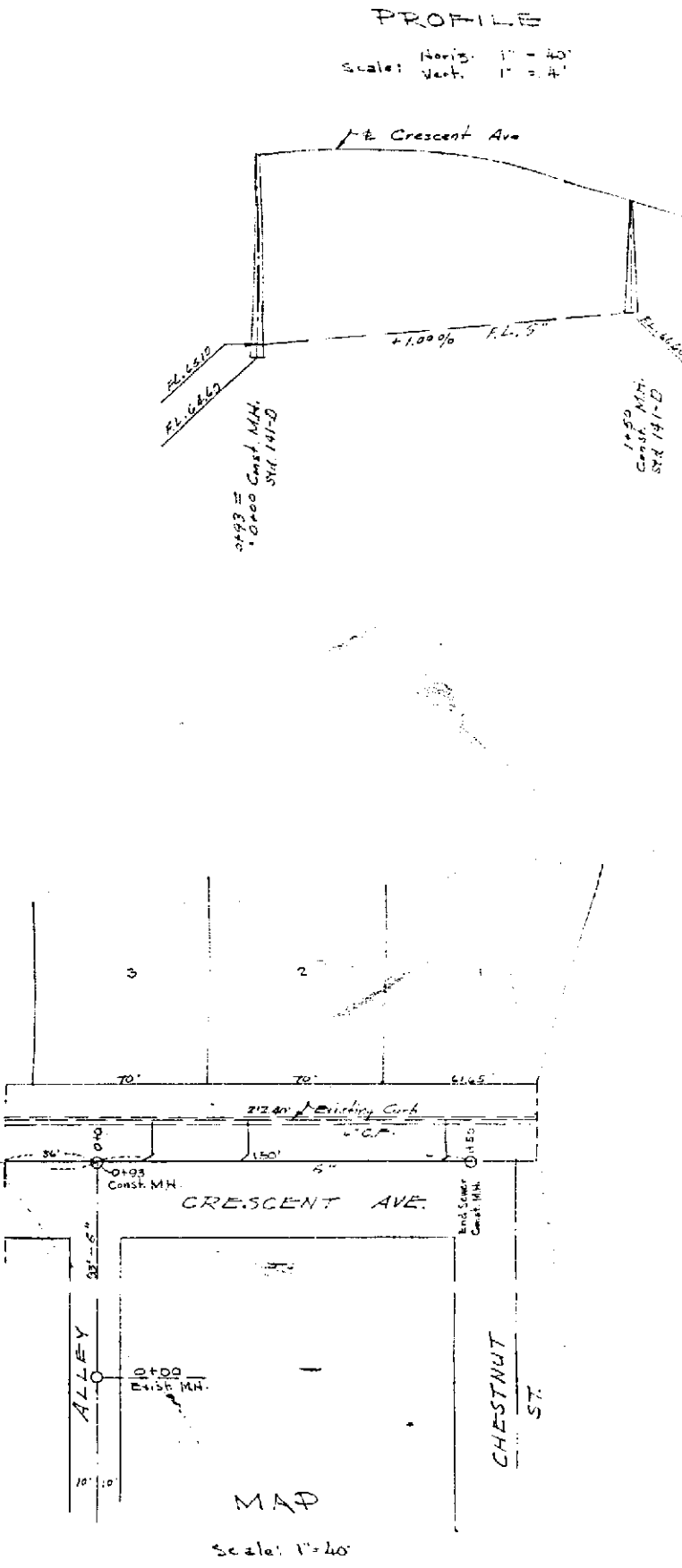
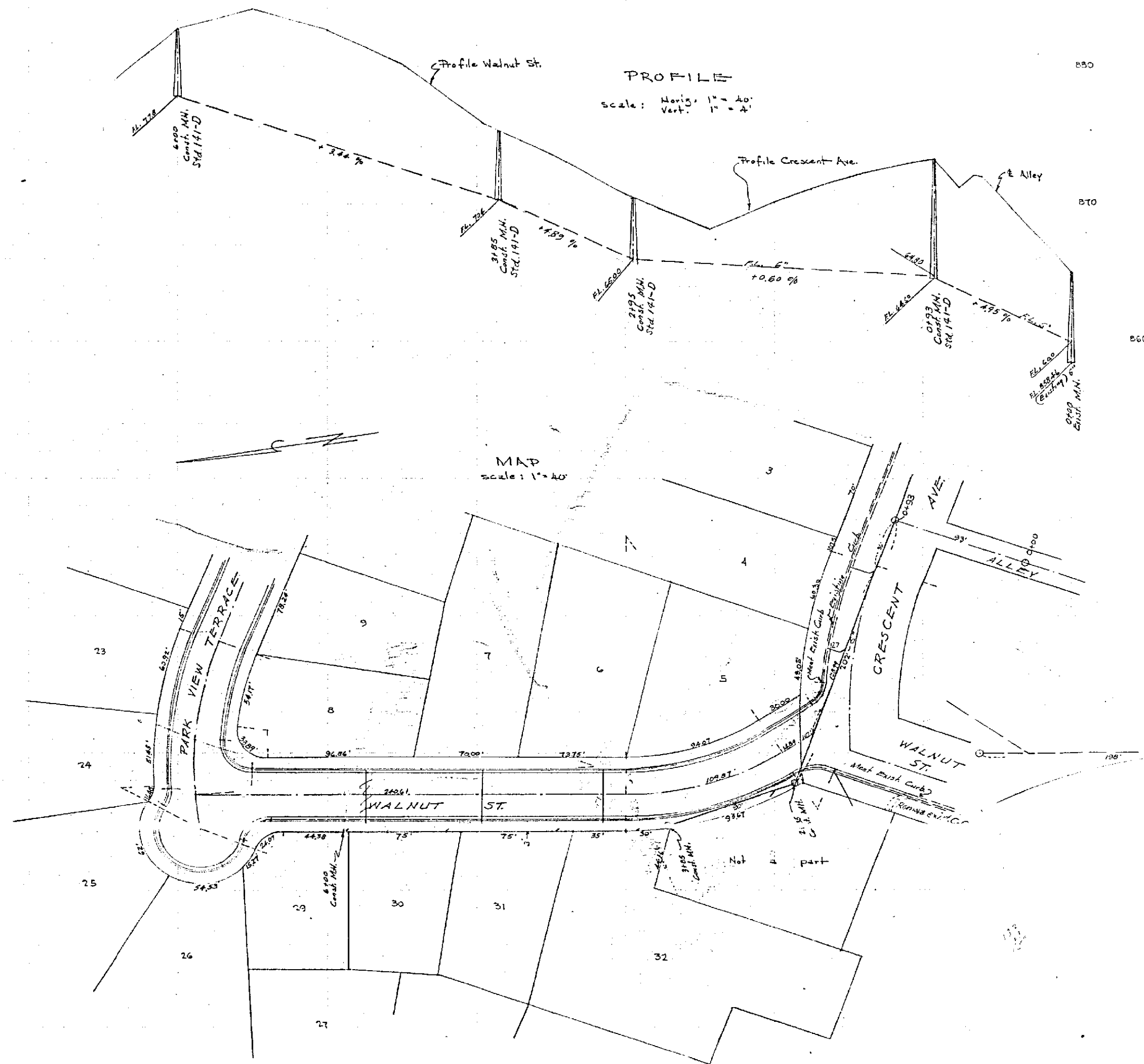
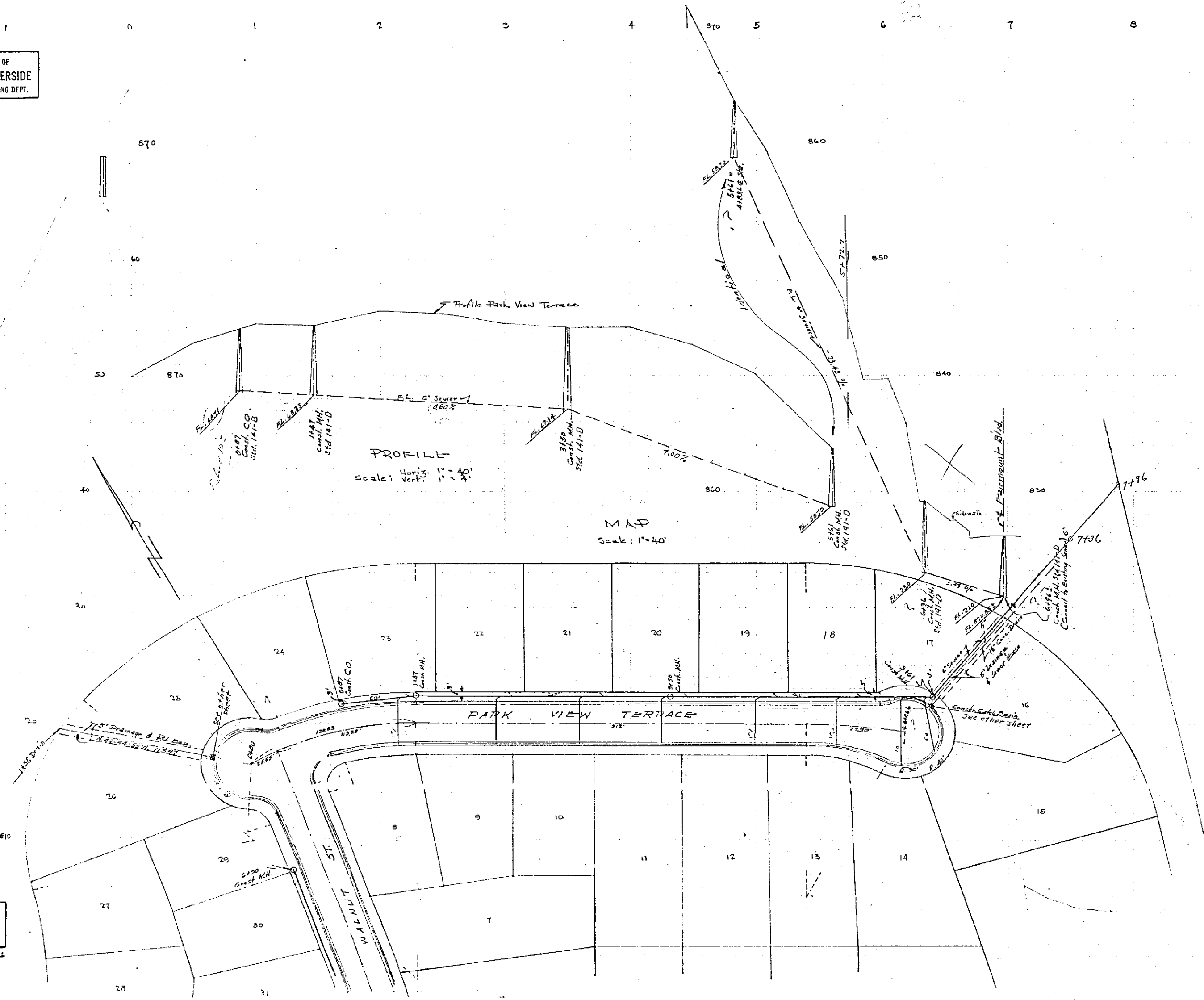


PROPERTY OF
CITY OF RIVERSIDE
CITY ENGINEERING DEPT.

PROPERTY OF
CITY OF RIVERSIDE
CITY ENGINEERING DEPT.

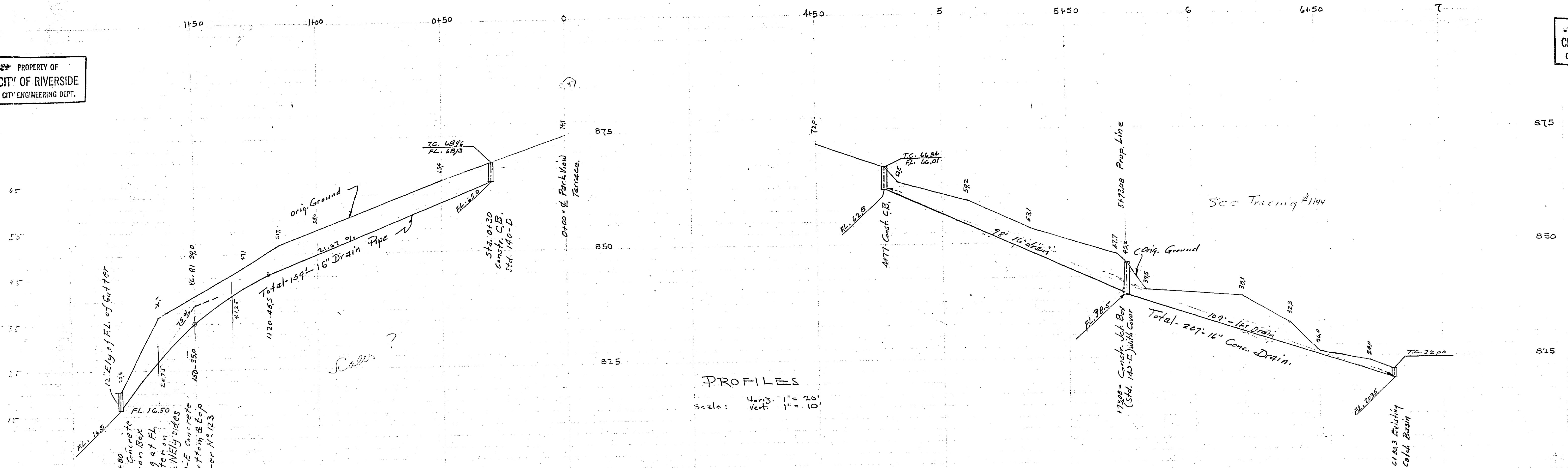


Sewer
PROFILES
PARK HILL DISTRICT
JUN 1923
Scale: Horiz. 1" = 40'
Vert. 1" = 4'
Donald J. McKee
C.E. Surveyor

E.M.
Not a Consultant, Member of Crescent
Elev. 8530

Approved: *[Signature]*
D.J. McKee
C.E. Surveyor

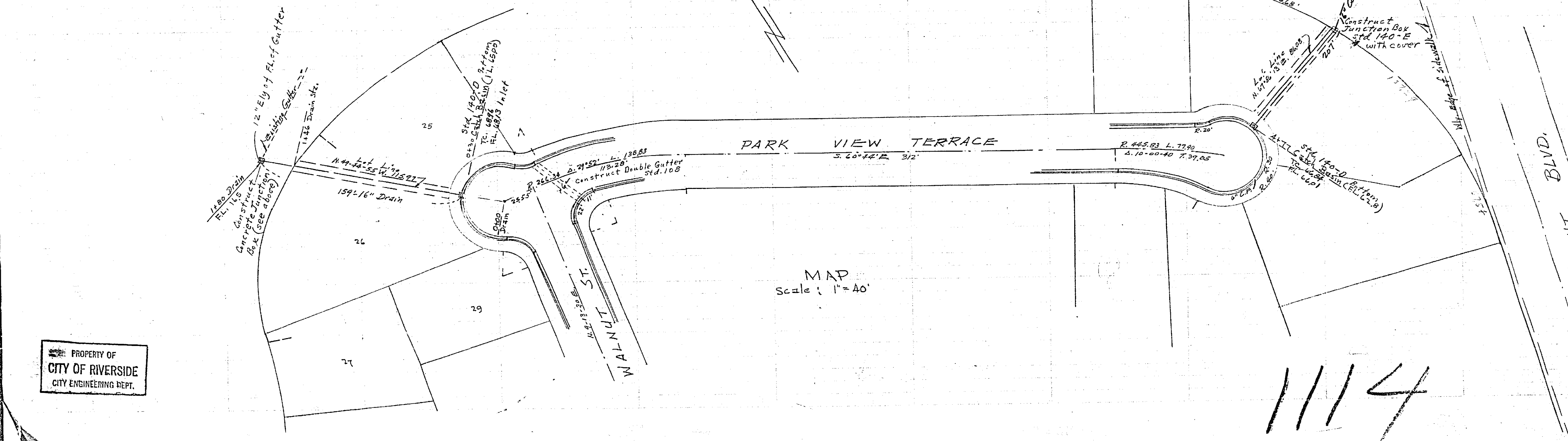
1114
Sheet 2
PROPERTY OF
CITY OF RIVERSIDE
CITY ENGINEERING DEPT.



DRAIN PROFILES
PARK HILL ESTATES
Aug. 1953
Scale Horiz. 1" = 20'
Vert. 1" = 10'
Donald J. McKee
Lic. Surveyor

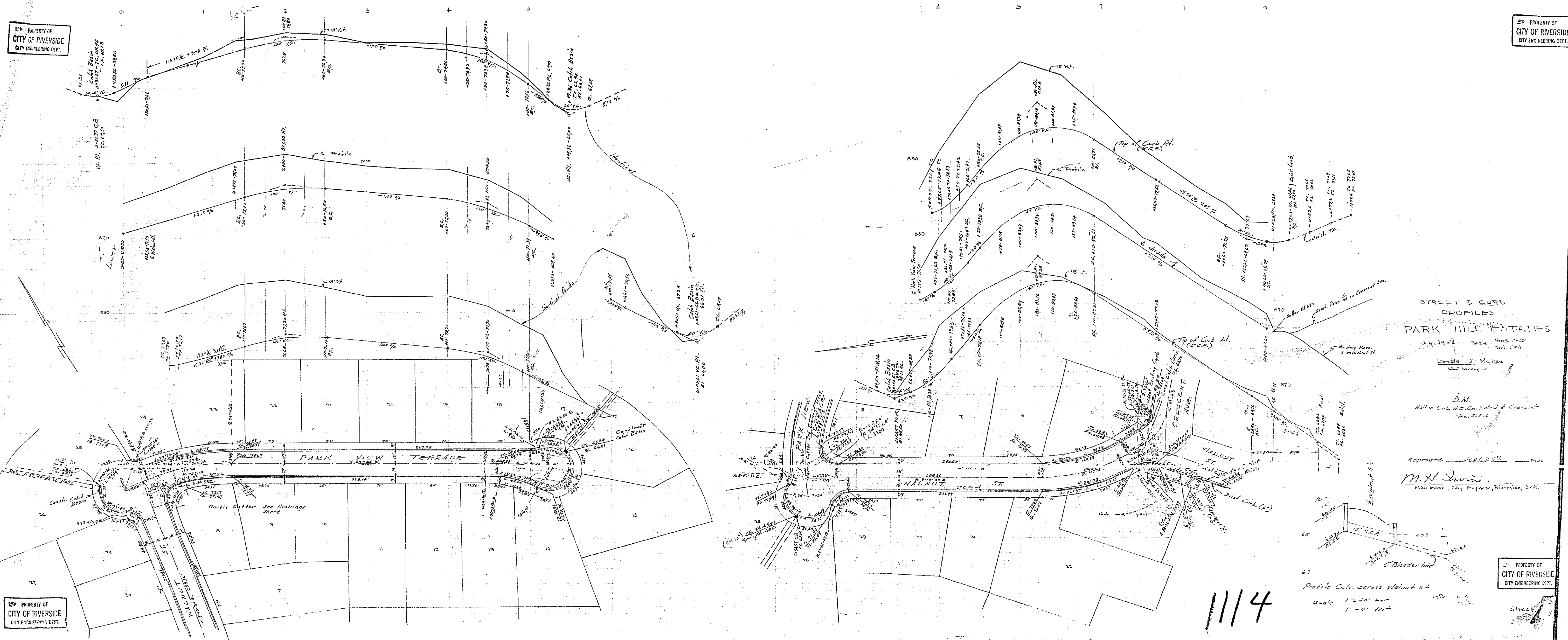
B.M.
Nail in Curb, N.E. Cor. Walnut & Crescent
Elev. 865.60

Approved M. H. Swine
Sept. 25, 1953
CITY ENGINEER.



PROPERTY OF
CITY OF RIVERSIDE
CITY ENGINEERING DEPT.

PROPERTY OF
CITY OF RIVERSIDE
CITY ENGINEERING DEPT.



STREET & CURB
PROFILES
PARK HILL ESTATES

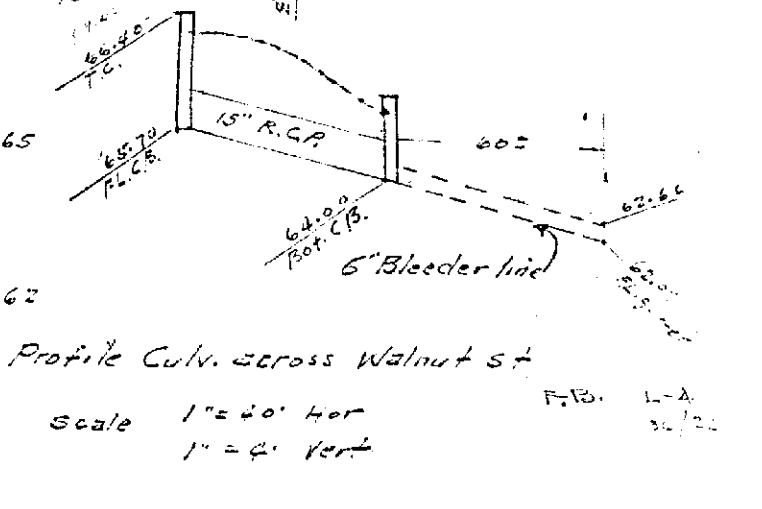
July, 1953 Scale: Horiz. 1"=20'
Vert. 1"=4'

Donald J. McKee
Civil Engineer

B.M.
Main Curb, N.E. Corner of Crescent
Elev. 828.50

Approved: Supl. S.E.U. 1953

M.H. Davis
Main Engineer, City Engineer, Riverside, Cal.



1114

PROPERTY OF
CITY OF RIVERSIDE
CITY ENGINEERING DEPT.

PROPERTY OF
CITY OF RIVERSIDE
CITY ENGINEERING DEPT.