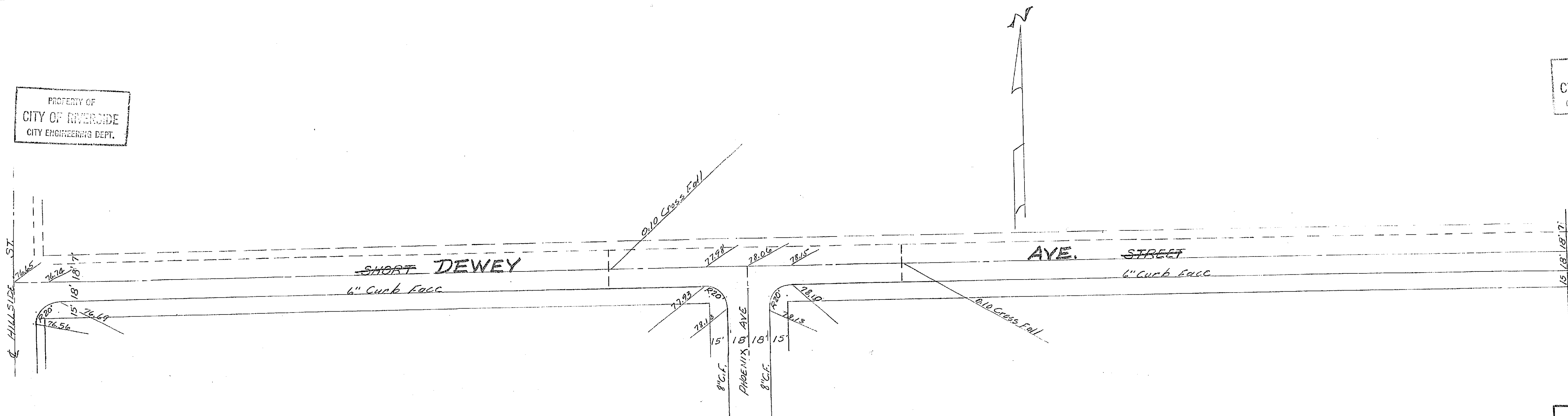
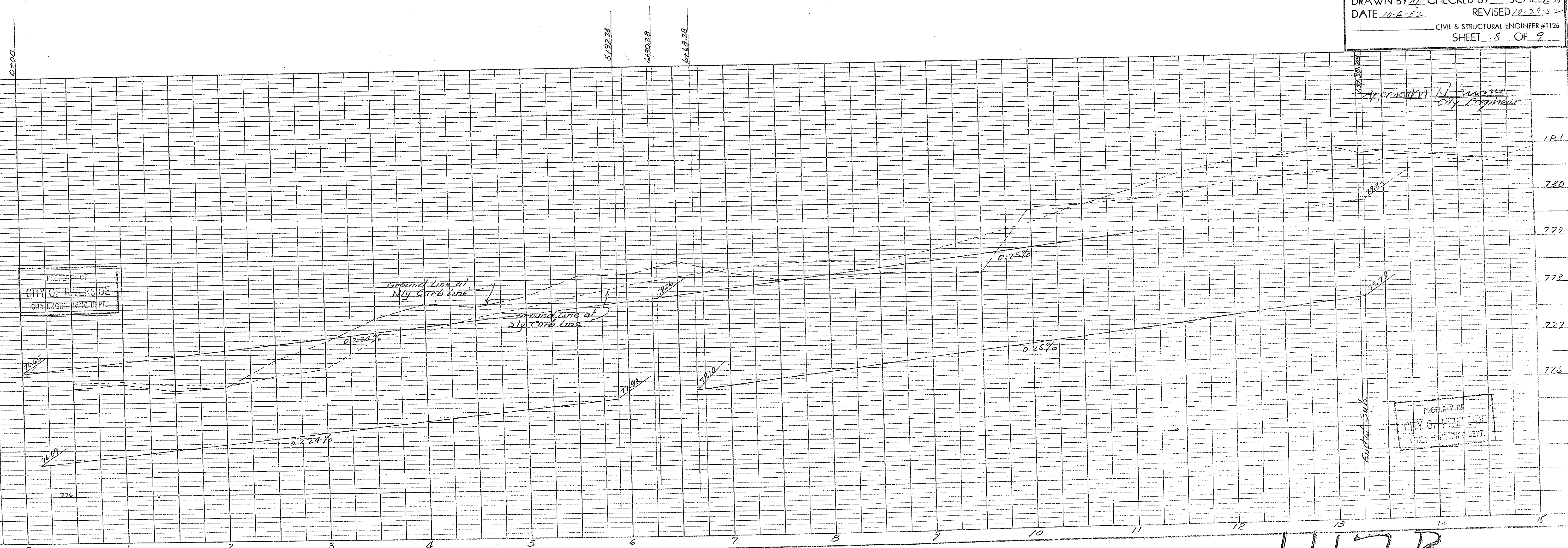


PROPERTY OF
CITY OF RIVERSIDE
CITY ENGINEERING DEPT.

PROPERTY OF
CITY OF RIVERSIDE
CITY ENGINEERING DEPT.



RIVERSIDE ENGINEERING CO.
RIVERSIDE, CALIFORNIA
FOR HELPS BROS.
Plan & Profile of Street - Unit No. 6
DRAWN BY W.L. CHECKED BY SCALE 1\"/>



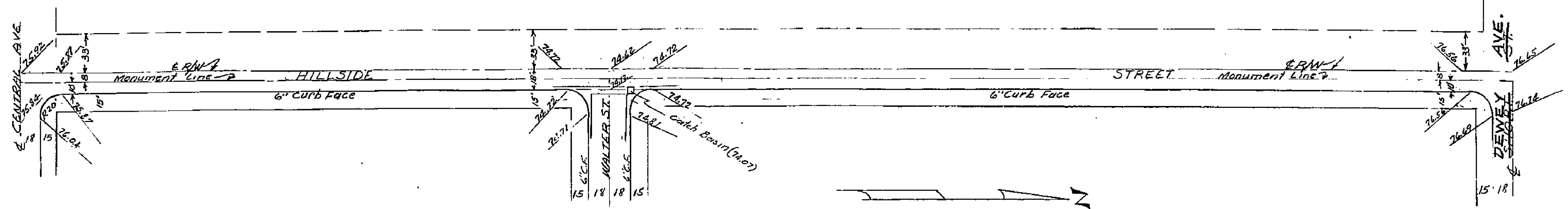
PROPERTY OF
CITY OF RIVERSIDE
CITY ENGINEERING DEPT.

PROPERTY OF
CITY OF RIVERSIDE
CITY ENGINEERING DEPT.

1117B

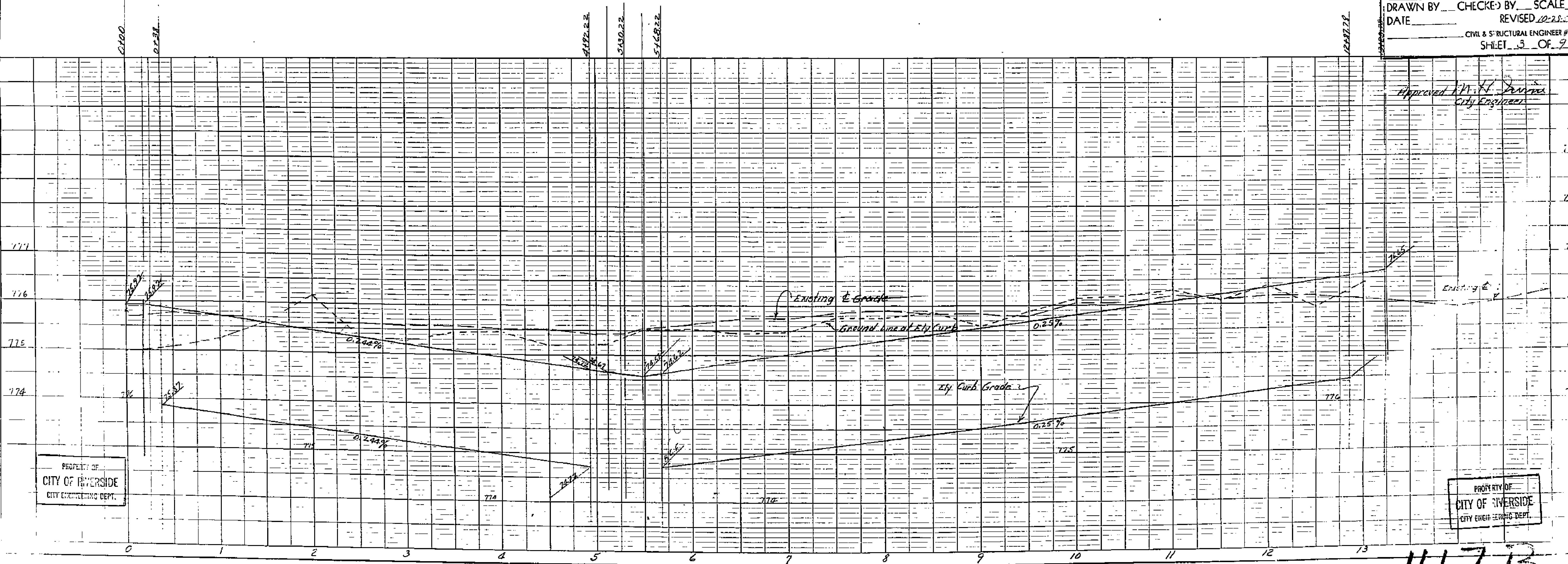
PROPERTY OF
CITY OF RIVERSIDE
CITY ENGINEERING DEPT.

PROPERTY OF
CITY OF RIVERSIDE
CITY ENGINEERING DEPT.



RIVERSIDE ENGINEERING CO.
RIVERSIDE, CALIFORNIA
FOR HEERS #6
PLAN & PROFILE OF ST.
DRAWN BY CHECKED BY SCALE
DATE REVISED 10-28-33
CIVIL & STRUCTURAL ENGINEER #1128
SHEET 3 OF 9

Approved H. H. Dennis
City Engineer



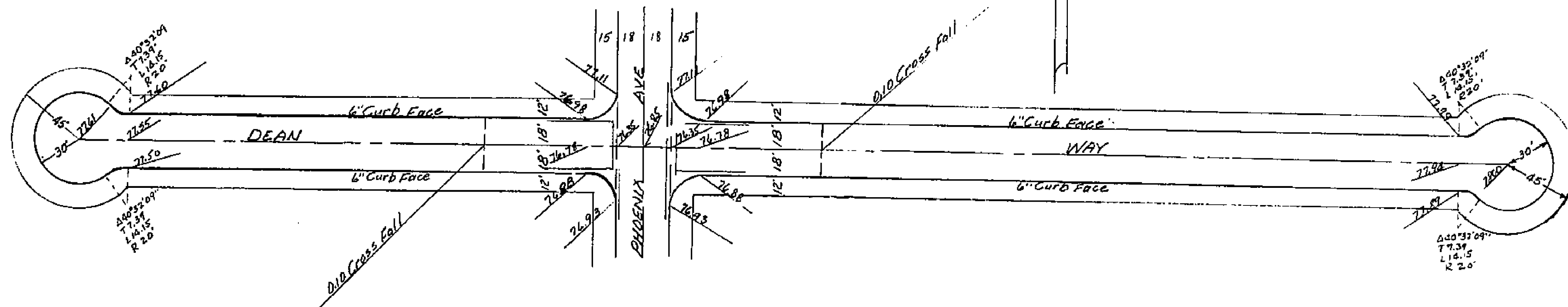
PROPERTY OF
CITY OF RIVERSIDE
CITY ENGINEERING DEPT.

PROPERTY OF
CITY OF RIVERSIDE
CITY ENGINEERING DEPT.

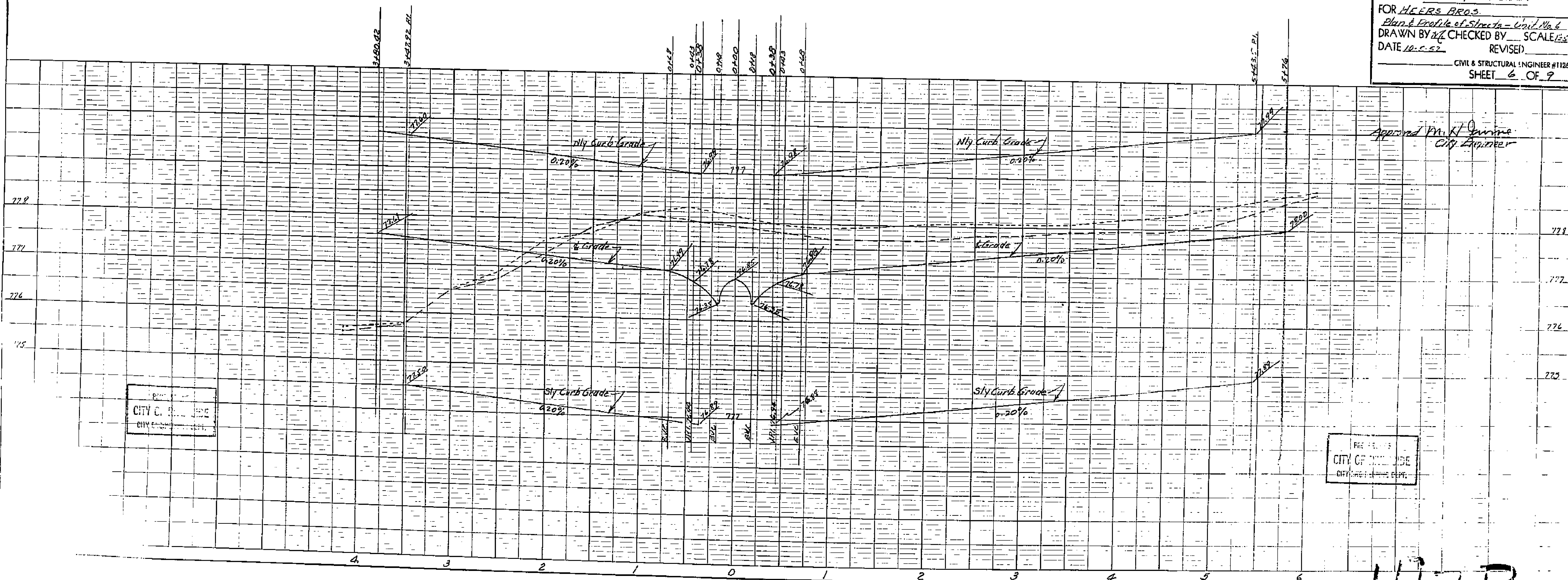
1117B

PROPERTY OF
CITY OF RIVERSIDE
CITY ENGINEERING DEPT.

PROPERTY OF
CITY OF RIVERSIDE
CITY ENGINEERING DEPT.



RIVERSIDE ENGINEERING CO.
RIVERSIDE, CALIFORNIA
FOR HEERS BROS.
Plan & Profile of Streets - Civil No. 6
DRAWN BY WZ CHECKED BY WZ SCALE 1/8\"/>



Approved WZ
City Engineer

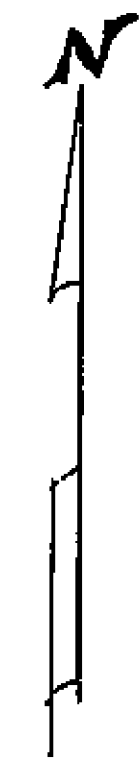
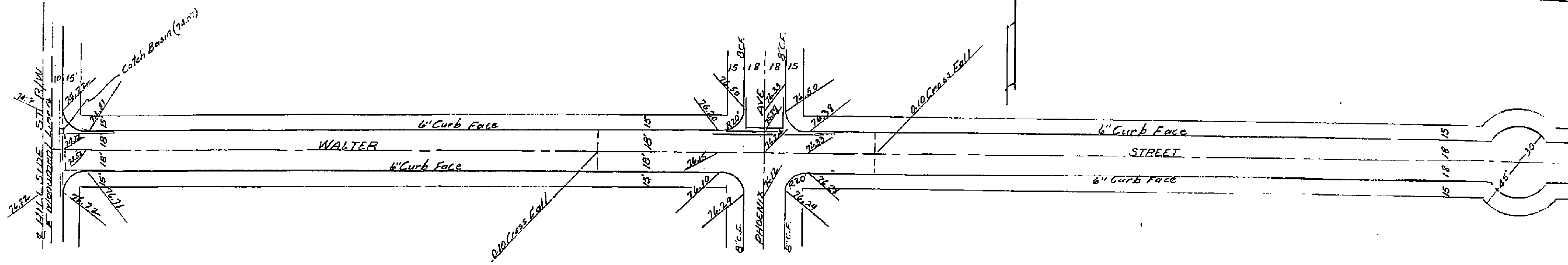
PROPERTY OF
CITY OF RIVERSIDE
CITY ENGINEERING DEPT.

PROPERTY OF
CITY OF RIVERSIDE
CITY ENGINEERING DEPT.

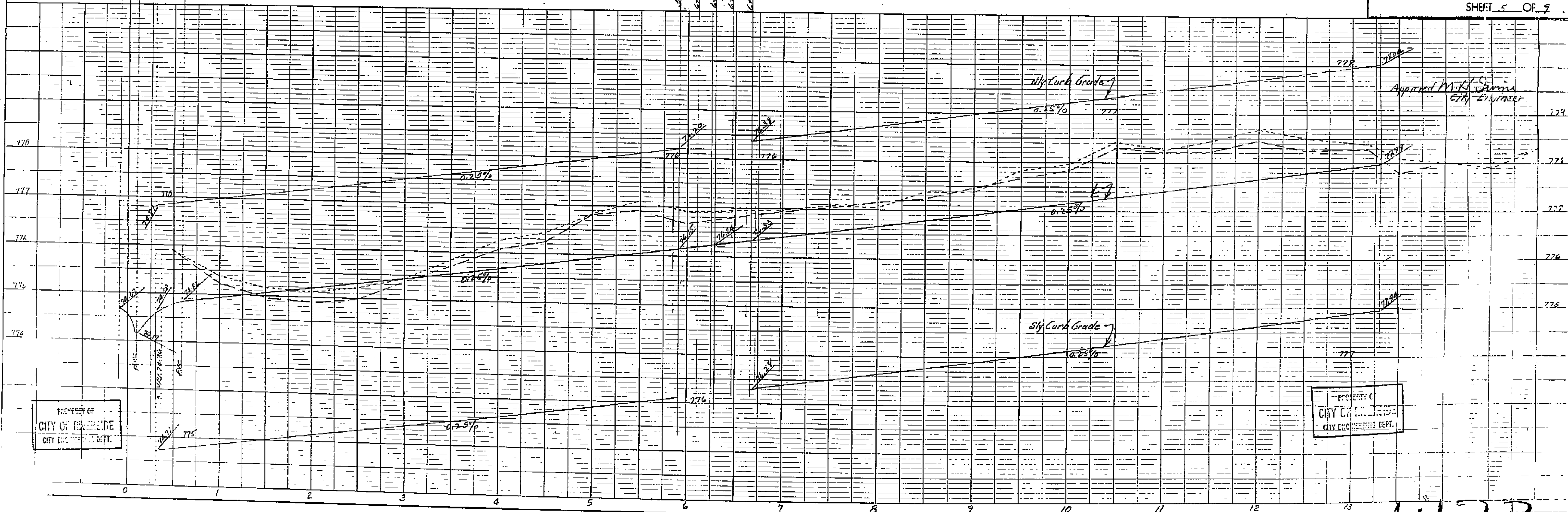
117B

PROPERTY OF
CITY OF RIVERSIDE
CITY ENGINEERING DEPT.

PROPERTY OF
CITY OF RIVERSIDE
CITY ENGINEERING DEPT.



RIVERSIDE ENGINEERING CO.
RIVERSIDE, CALIFORNIA
FOR HEERS, BROS
Plan & Profile of Streets - Unit No. 6
DRAWN BY *ML* CHECKED BY *...* SCALE 1/8"=1'-0"
DATE 10-6-52 REVISED 10-23-52
CIVIL & STRUCTURAL ENGINEER #1126
SHEET 5 OF 9



Approved *M.H.S. Gammis*
City Engineer

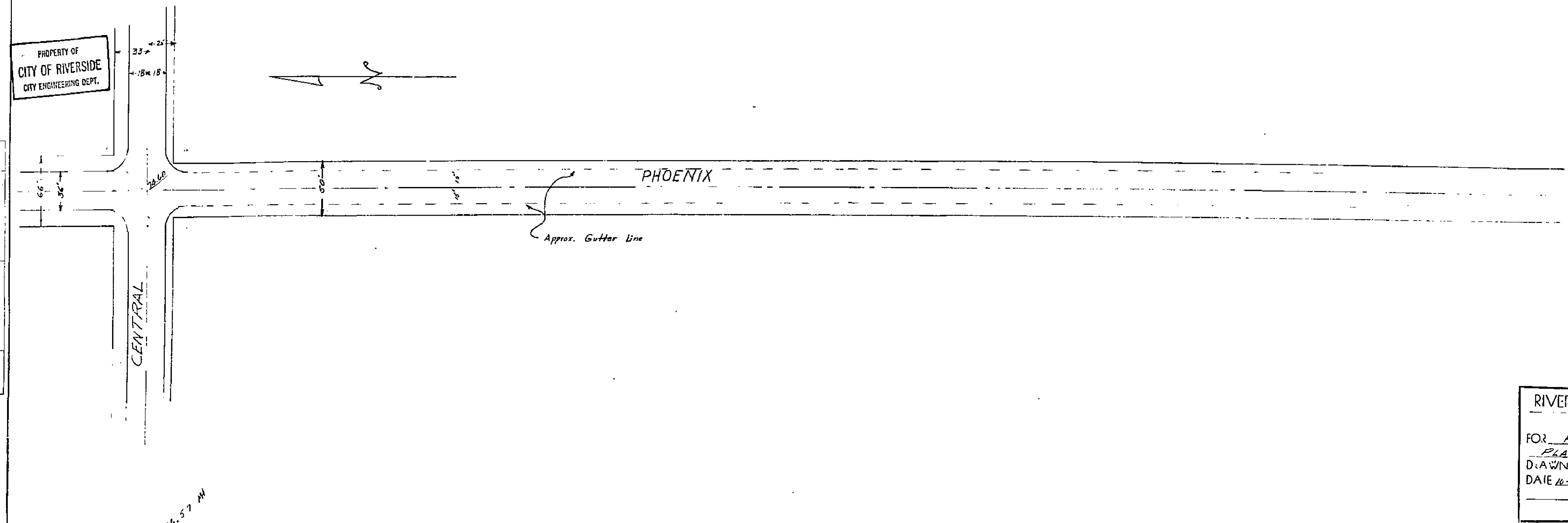
PROPERTY OF
CITY OF RIVERSIDE
CITY ENGINEERING DEPT.

PROPERTY OF
CITY OF RIVERSIDE
CITY ENGINEERING DEPT.

1117B

PROPERTY OF
CITY OF RIVERSIDE
CITY ENGINEERING DEPT.

PROPERTY OF
CITY OF RIVERSIDE
CITY ENGINEERING DEPT.



RIVERSIDE ENGINEERING CO.
RIVERSIDE, CALIFORNIA
FOR HEERS #6
PLAN & PROFILE OF STREETS
DRAWN BY W. CHUCKE BY SCALE
DATE 10-10-52 REVISED 10-28-52
CIVIL & STRUCTURAL ENG. NEER #1126
SHEET 2-A OF 9

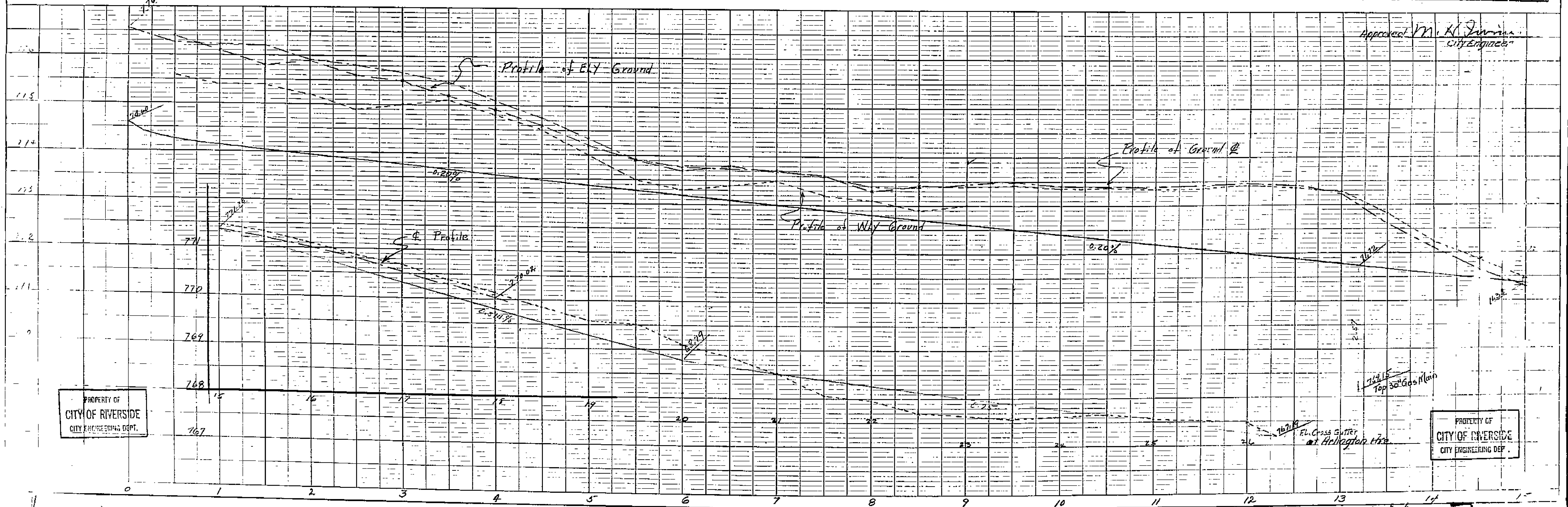
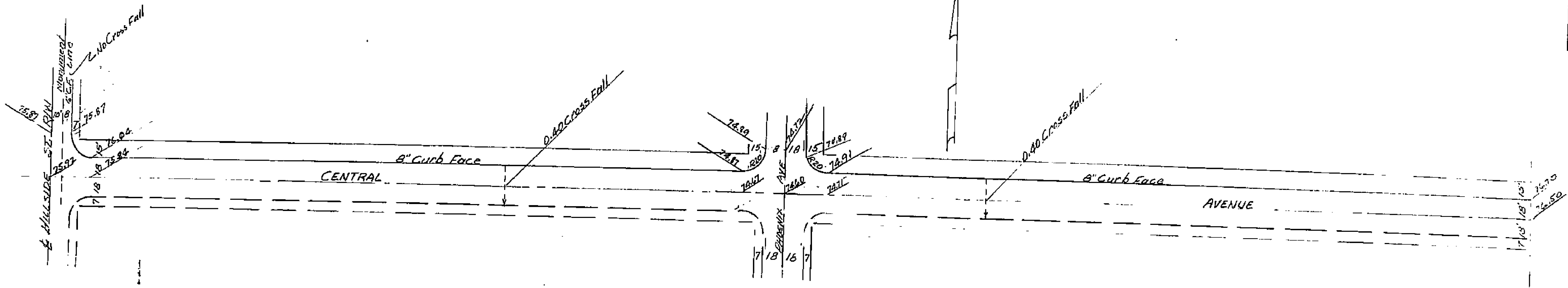


PLATE 1 - PLAN - PROFILE - O. P. & R. E. STANDARD
KEUFFEL & ESSER CO., NEW YORK

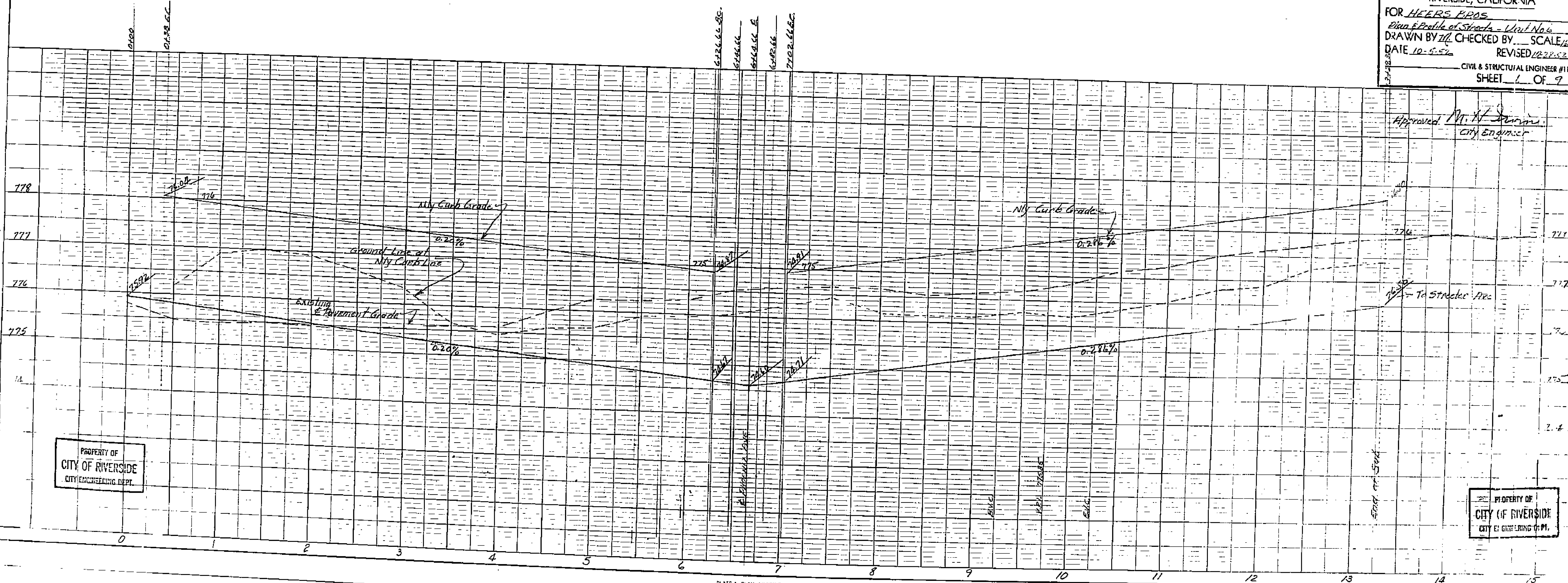
1117B

PROPERTY OF
CITY OF RIVERSIDE
CITY ENGINEERING DEPT.

PROPERTY OF
CITY OF RIVERSIDE
CITY ENGINEERING DEPT.



RIVERSIDE ENGINEERING CO.
RIVERSIDE, CALIFORNIA
FOR HEERS PROS
Plan & Profile of Streets - Unit No. 6
DRAWN BY W.L. CHECKED BY SCALE 1/2"=10'
DATE 10-5-52 REVISED 12-22-52
CIVIL & STRUCTURAL ENGINEER #1126
SHEET 1 OF 9



Approved M. H. ...
City Engineer

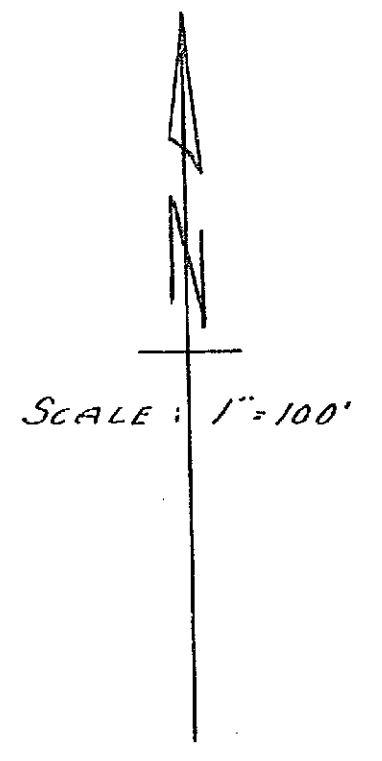
PROPERTY OF
CITY OF RIVERSIDE
CITY ENGINEERING DEPT.

PROPERTY OF
CITY OF RIVERSIDE
CITY ENGINEERING DEPT.

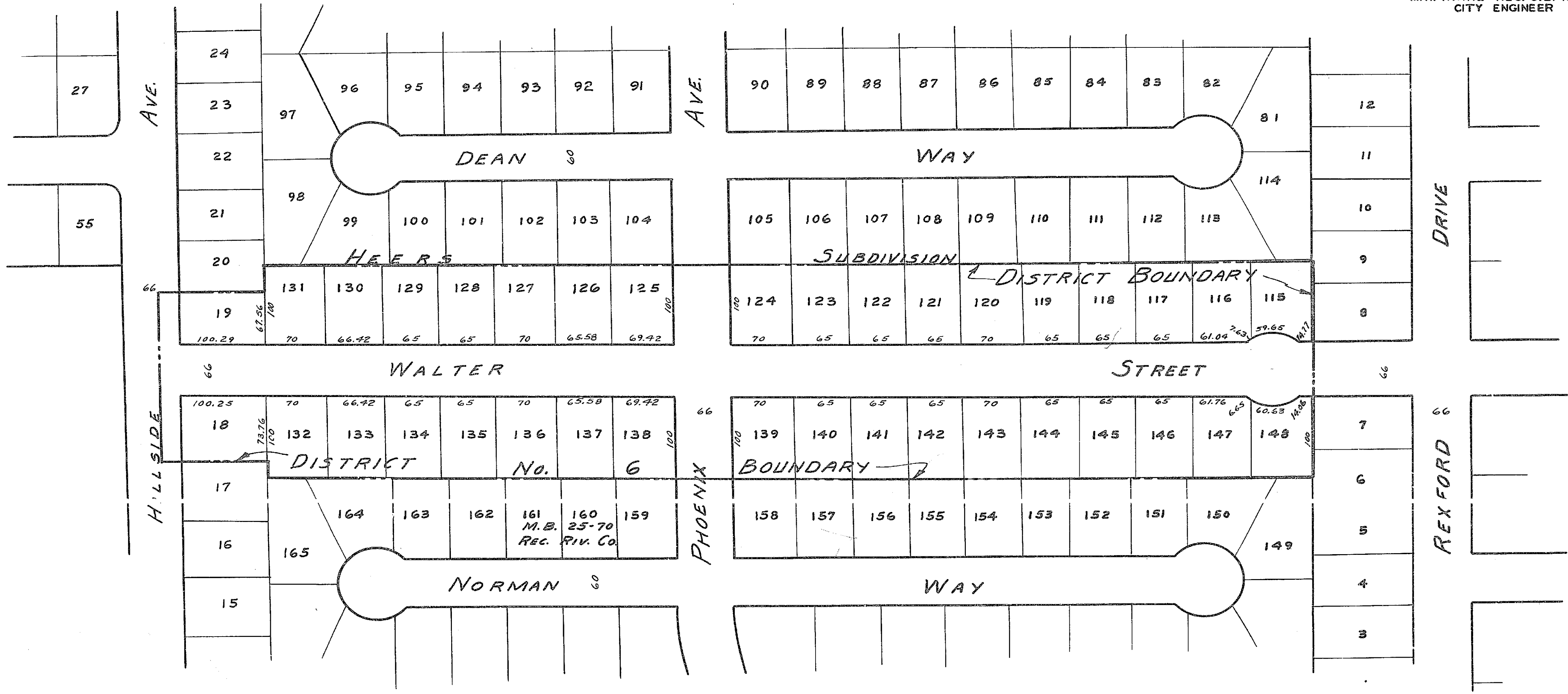
11175

MAP NO. 1117-A
 SHOWING THE LANDS INCLUDED WITHIN
 THE ASSESSMENT DISTRICT TO BE BENEFITED
 BY THE CONSTRUCTION OF CONCRETE SIDEWALKS
 IN THE MATTER OF WALTER STREET
 SIDEWALK IMPROVEMENT
 DISTRICT

RIVERSIDE, CALIFORNIA
 DISTRICT BOUNDARY SHOWN THUS _____
 MAY 1955
 F.B. 576-1



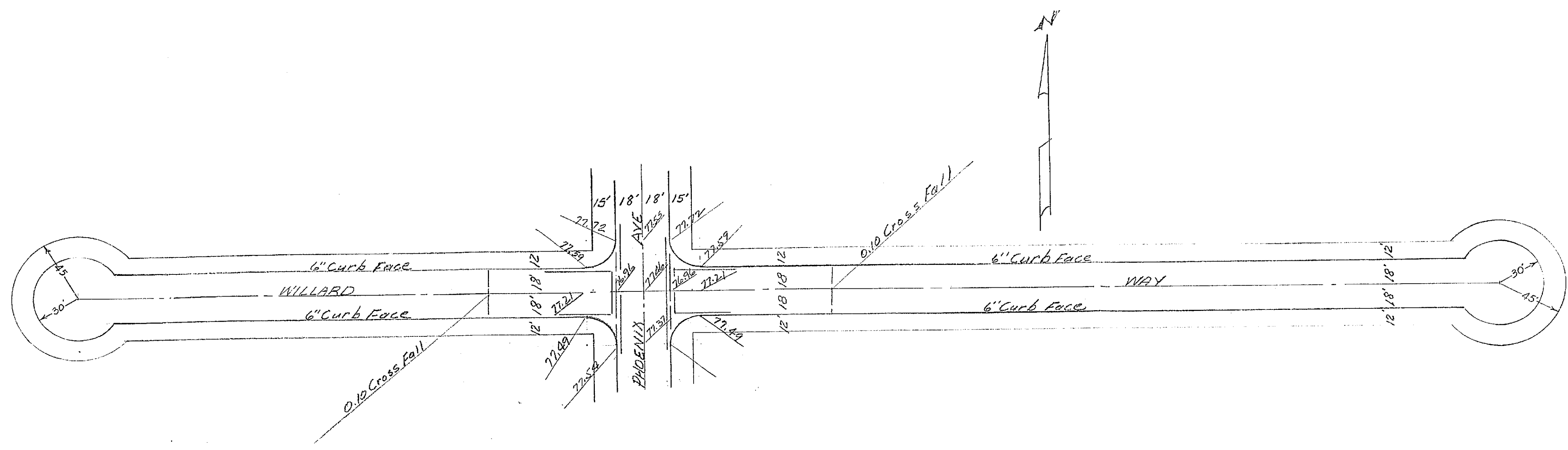
APPROVED: *M.H. Irvine.*
 M.H. IRVINE - REG. C.E. NO. 3011
 CITY ENGINEER



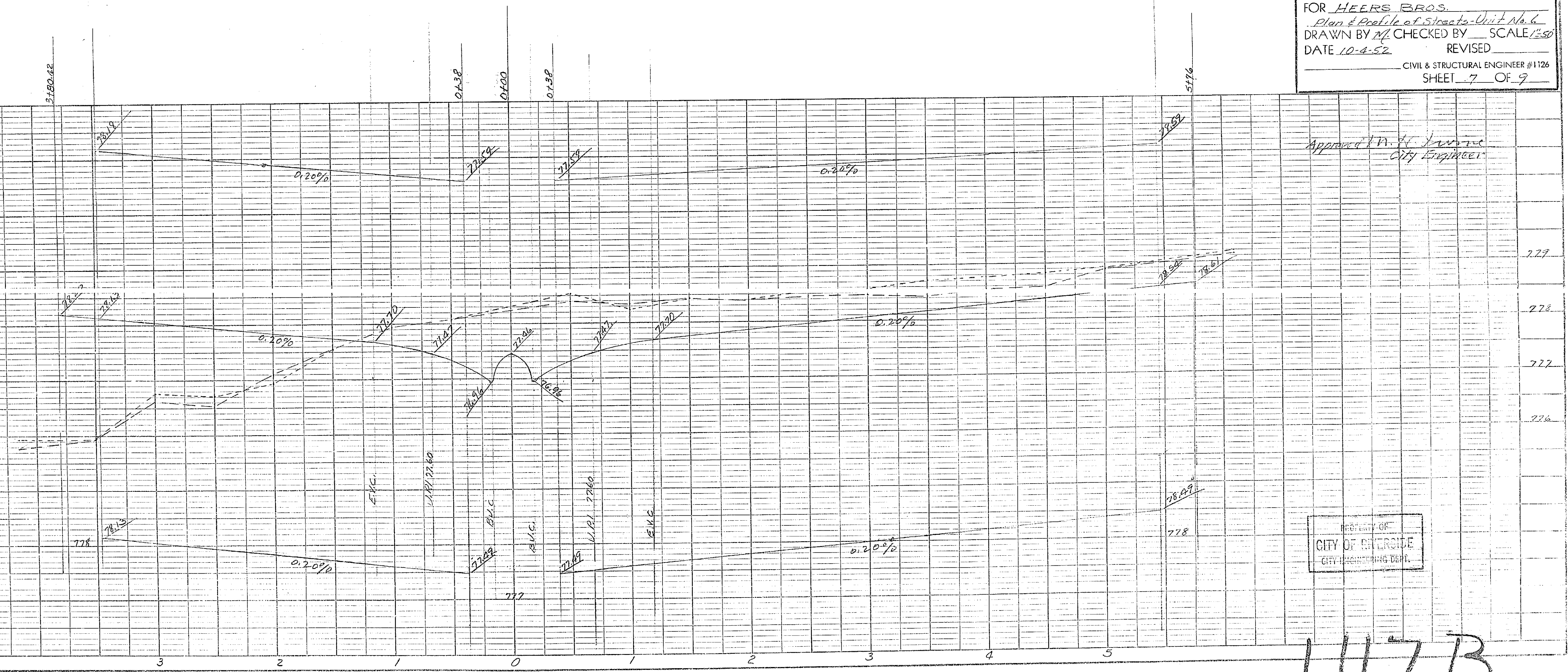
1117B

PROPERTY OF
CITY OF RIVERSIDE
CITY ENGINEERING DEPT.

PROPERTY OF
CITY OF RIVERSIDE
CITY ENGINEERING DEPT.



RIVERSIDE ENGINEERING CO.
RIVERSIDE, CALIFORNIA
FOR HEERS BROS.
Plan & Profile of Streets - Unit No. 6
DRAWN BY *R.E.* CHECKED BY *SCALE 1/320*
DATE 10-4-52 REVISED
CIVIL & STRUCTURAL ENGINEER #1126
SHEET 7 OF 9



Approved *A.H. Lawrence*
City Engineer

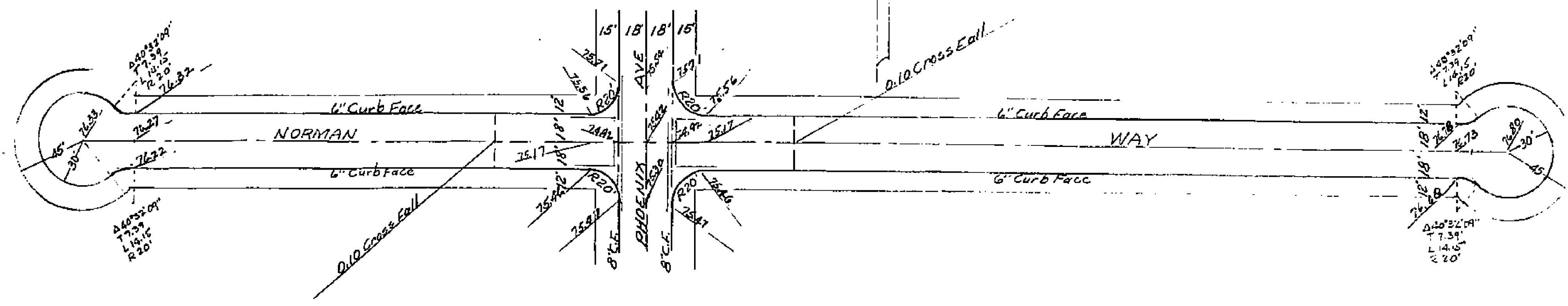
PROPERTY OF
CITY OF RIVERSIDE
CITY ENGINEERING DEPT.

PROPERTY OF
CITY OF RIVERSIDE
CITY ENGINEERING DEPT.

1117B

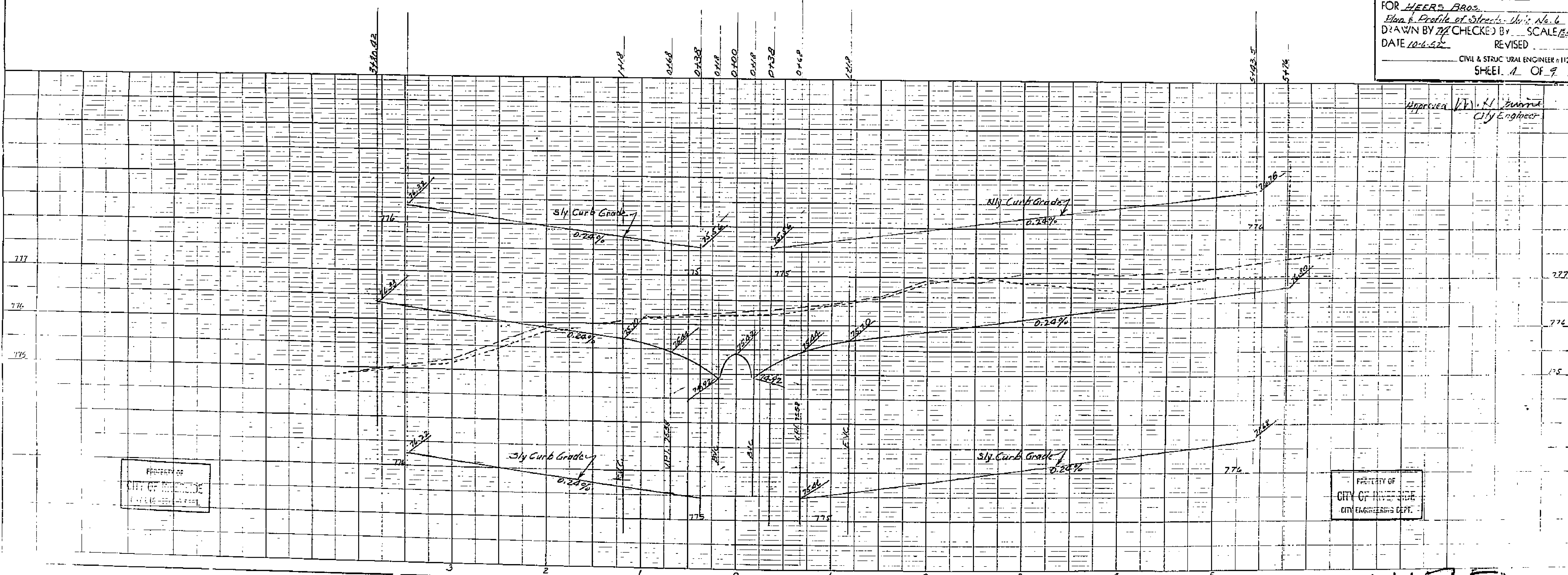
PROPERTY OF
CITY OF RIVERSIDE
CITY ENGINEERING DEPT.

PROPERTY OF
CITY OF RIVERSIDE
CITY ENGINEERING DEPT.



RIVERSIDE ENGINEERING CO.
RIVERSIDE, CALIFORNIA
FOR HEERS BROS.
Plan & Profile of Streets, No. 6
DRAWN BY *WJ* CHECKED BY *...* SCALE 1/8" = 1'-0"
DATE 10-6-52 REVISION
CIVIL & STRUCTURAL ENGINEER # 1126
SHEET A OF 9

Approved *[Signature]*
City Engineer



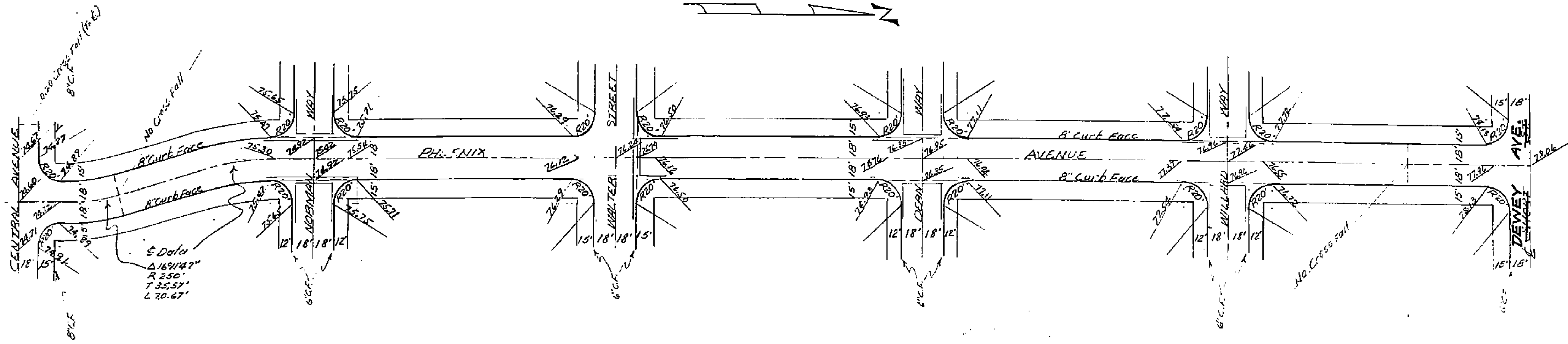
PROPERTY OF
CITY OF RIVERSIDE
CITY ENGINEERING DEPT.

PROPERTY OF
CITY OF RIVERSIDE
CITY ENGINEERING DEPT.

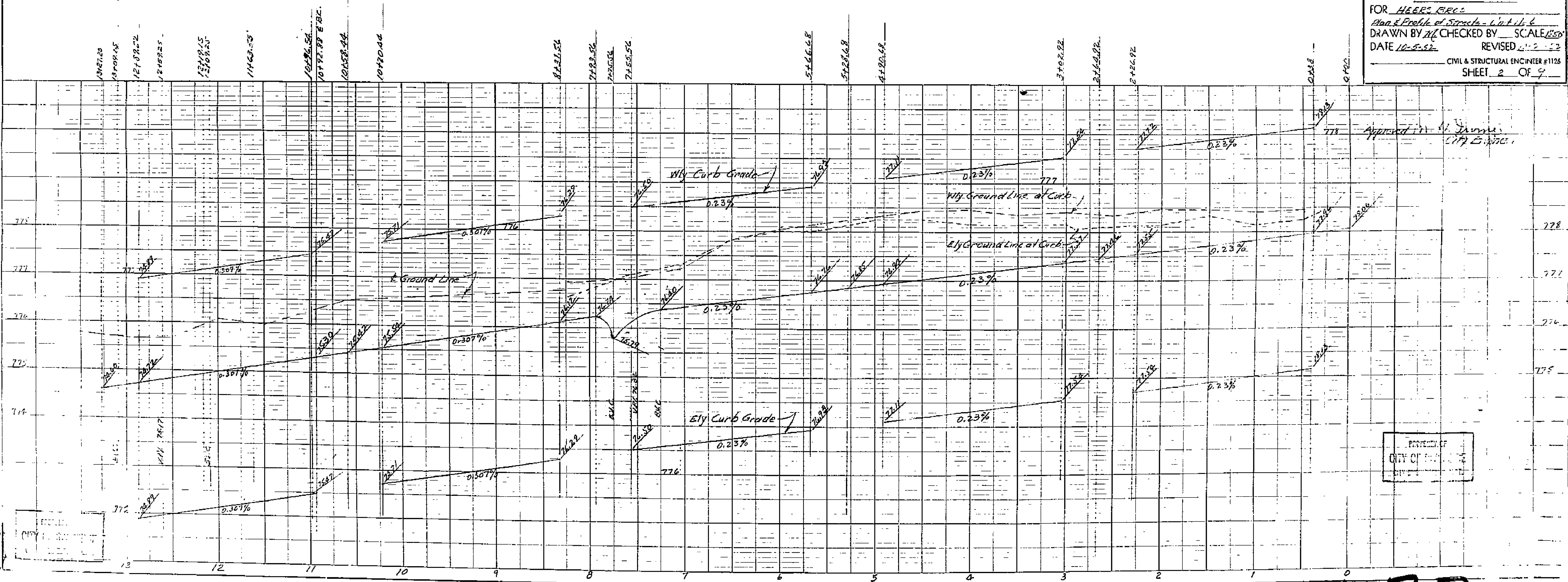
1117B

CITY OF RIVERSIDE
CITY ENGINEER'S DEPT.

CITY OF RIVERSIDE
CITY ENGINEER'S DEPT.



RIVERSIDE ENGINEERING CO.
RIVERSIDE, CALIFORNIA
FOR HEER'S BRCS
Plan & Profile of Streets - 1st St. & Dewey Ave.
DRAWN BY W.C. CHECKED BY SCALE 1/8\"/>



Approved: W.C. James
City Engineer

CITY OF RIVERSIDE
CITY ENGINEER'S DEPT.

1117B