

# IMPROVEMENT PLANS MONTEREY MANOR

CITY OF RIVERSIDE  
SCALE: AS SHOWN

CALIFORNIA  
DATE: JAN. 1954

Approved this 20<sup>th</sup> day of January, 1954.

*J. H. Swaine*  
CITY ENGINEER, CITY OF RIVERSIDE

Dated: January 22, 1954

*D. W. Glick*  
ENGINEER, A.M. FICKES, C.E. 1933

**BOYLE ENGINEERING**  
327 SPURGEON BLDG  
SANTA ANA, CALIFORNIA  
PH. KIMBERLY 3-8251

**ESTIMATED QUANTITIES**

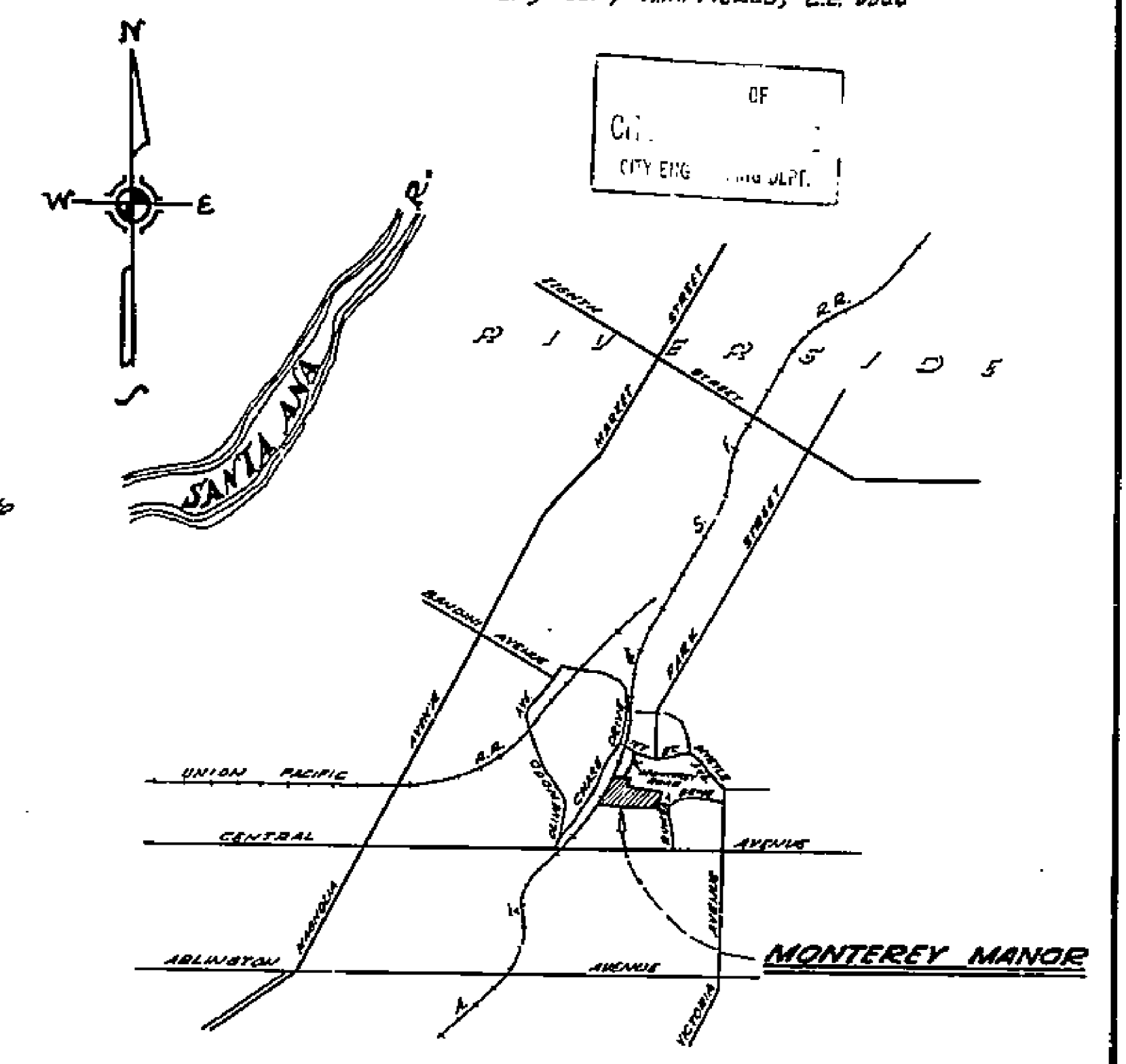
1. Excavation	12,990 Cu Yds.
2. 6" Std. Combination Curb & Gutter	4,835 Lin. Ft.
3. 6" Concrete Cross Gutter	1,300 Sq. Ft.
4. 2 1/2" Plant Mixed Surfacing & Seal Coat	80,500 Sq. Ft.
5. Paved Drainage Ditch	1,200 Lin. Ft.
6. 8" V.C.P. Sewer (Inside Troof)	2,325 Lin. Ft.
7. 8" V.C.P. Sewer Encasement	1,235 Lin. Ft.
8. 8" V.C.P. Sewer (Central Ave.)	645 Lin. Ft.
9. Manholes (Inside Troof)	71.7 Vert. Ft.
10. Manholes (Encasement)	202 Vert. Ft.
11. Manholes (Central Ave.)	172 Vert. Ft.
12. Concrete Sewer Encasement	40 Lin. Ft.
13. 24" I.D. Sewer Pipe Casing	30 Lin. Ft.
14. Cleanout (Sewer)	50 Vert. Ft.
15. 24" Concrete Drain Pipe	114 Lin. Ft.
16. Curb Inlet	One Each

**NOTES**

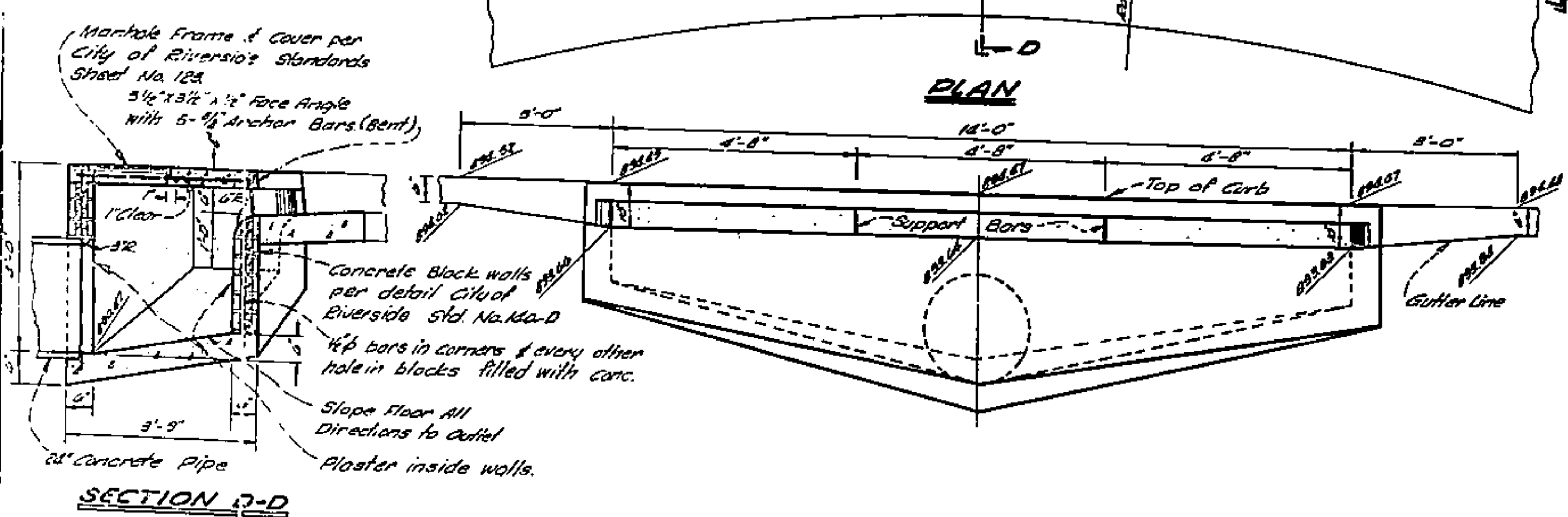
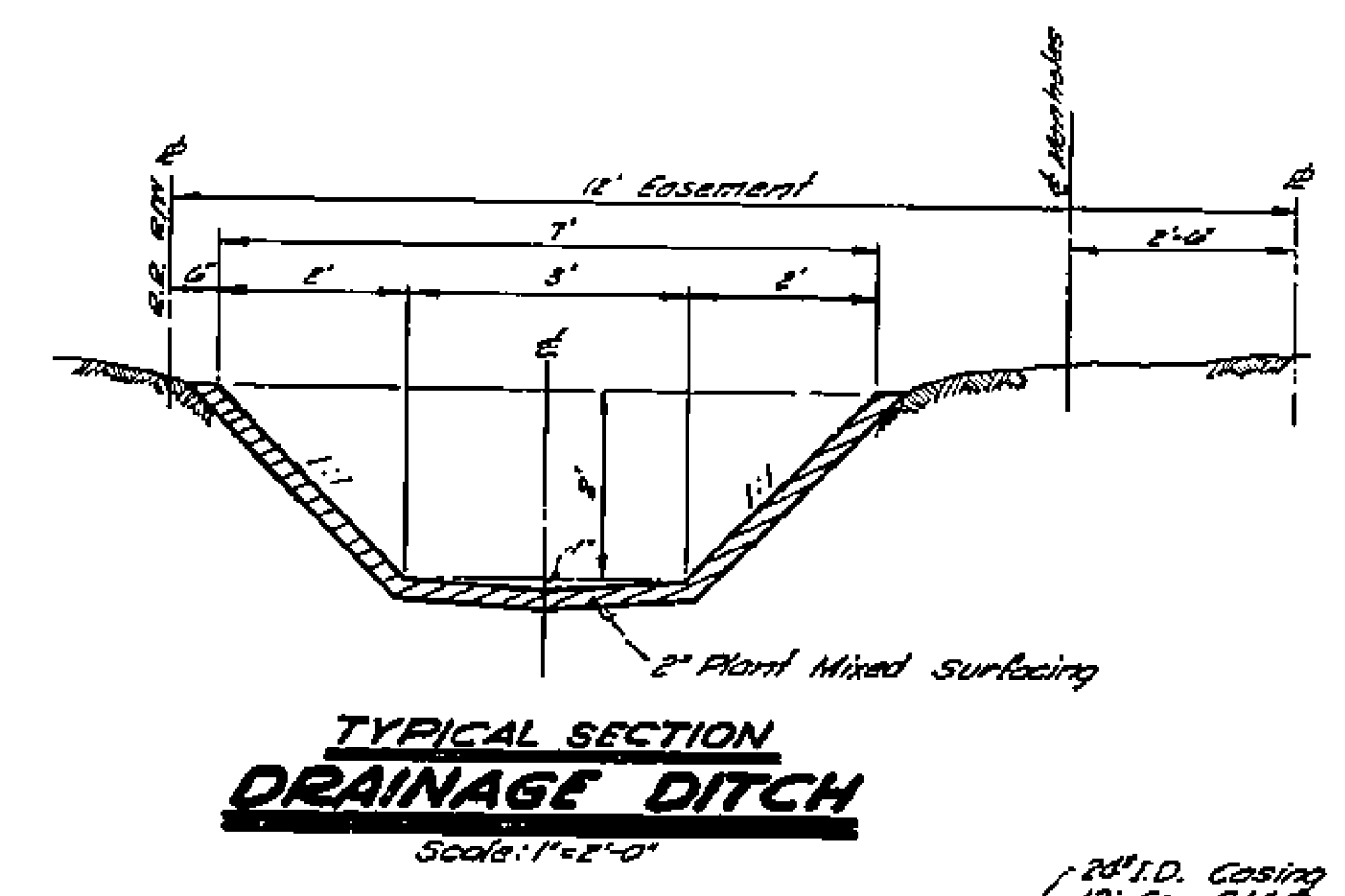
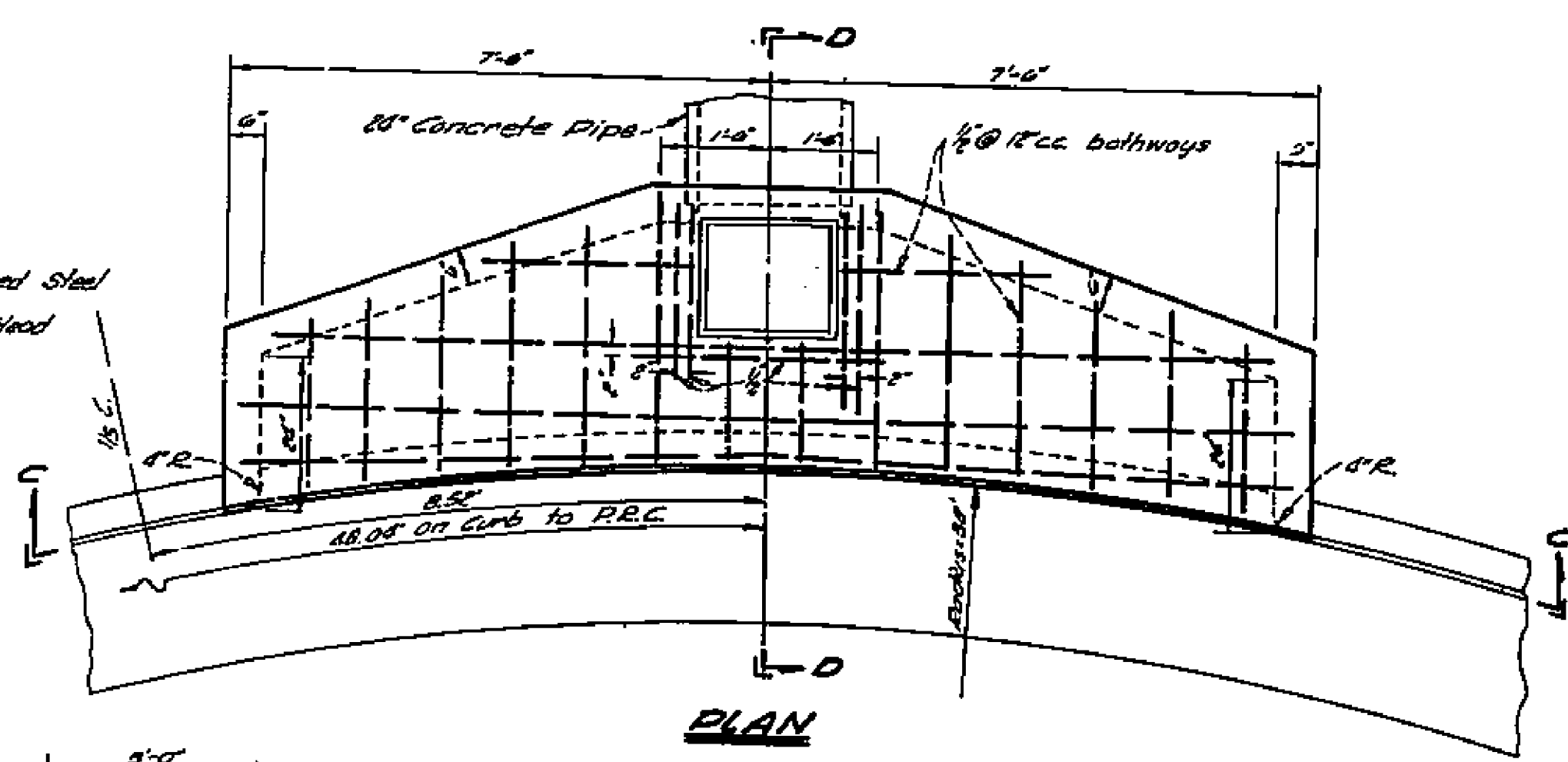
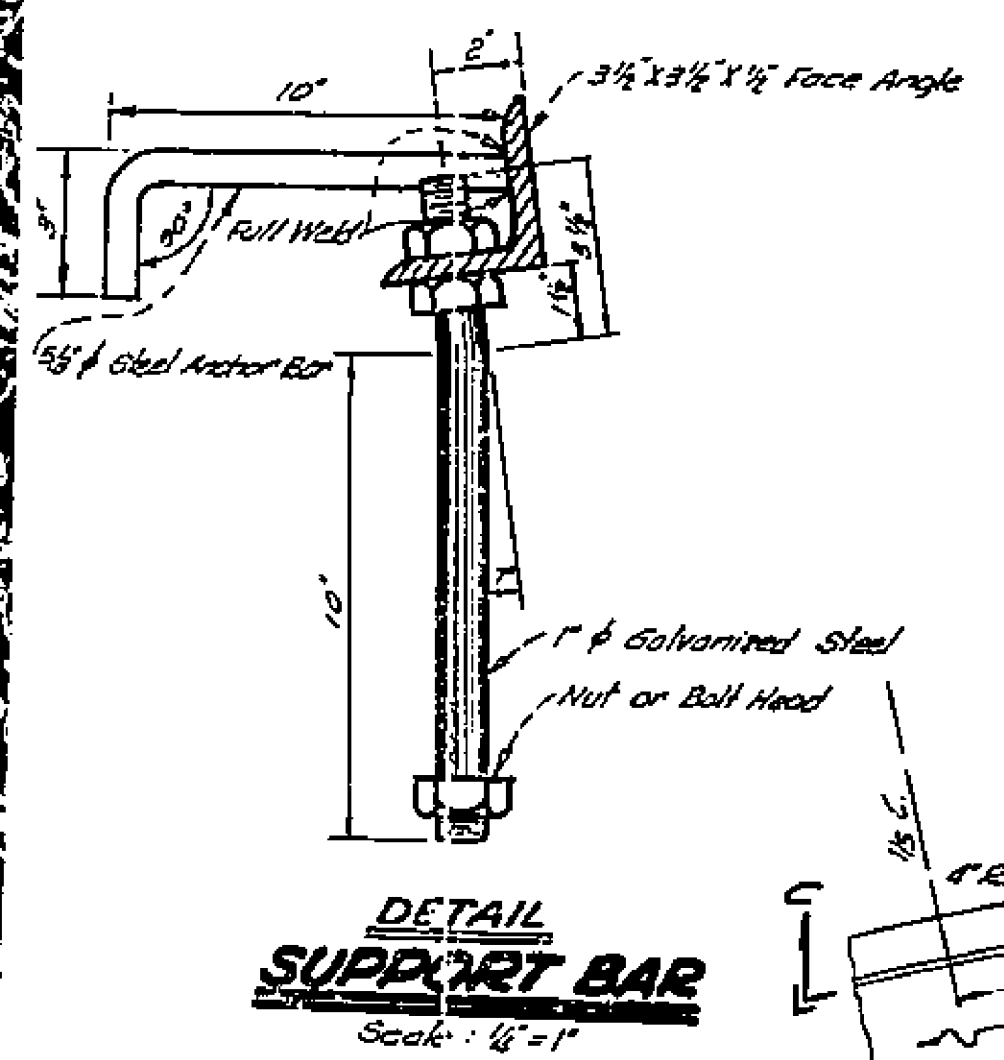
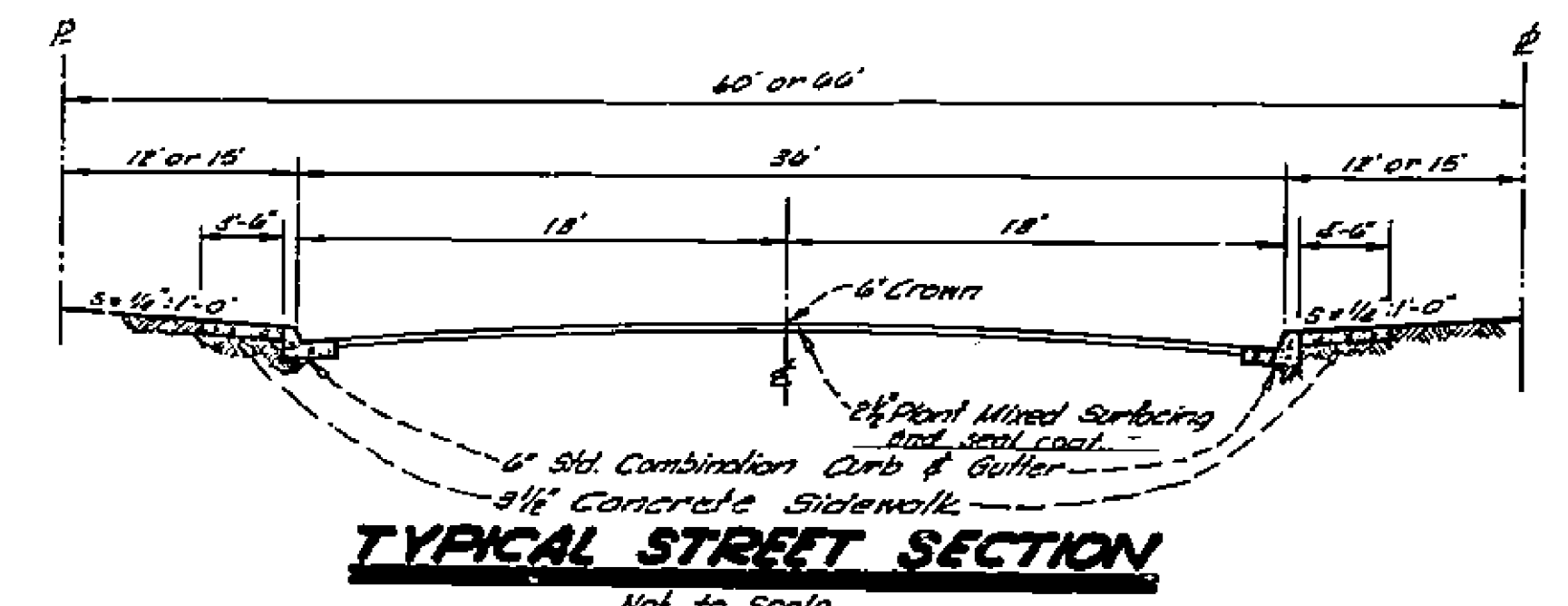
Bench Mark: Spike & Lead in Easterly Headwall of Culvert A-2 at intersection of A.T. & S.F. R.R. and Central Ave. City of Riverside datum. Elev. = 875.31

All work done shall conform to the City of Riverside Standards and Specifications and shall be subject to the approval of the City Engineering Dept.

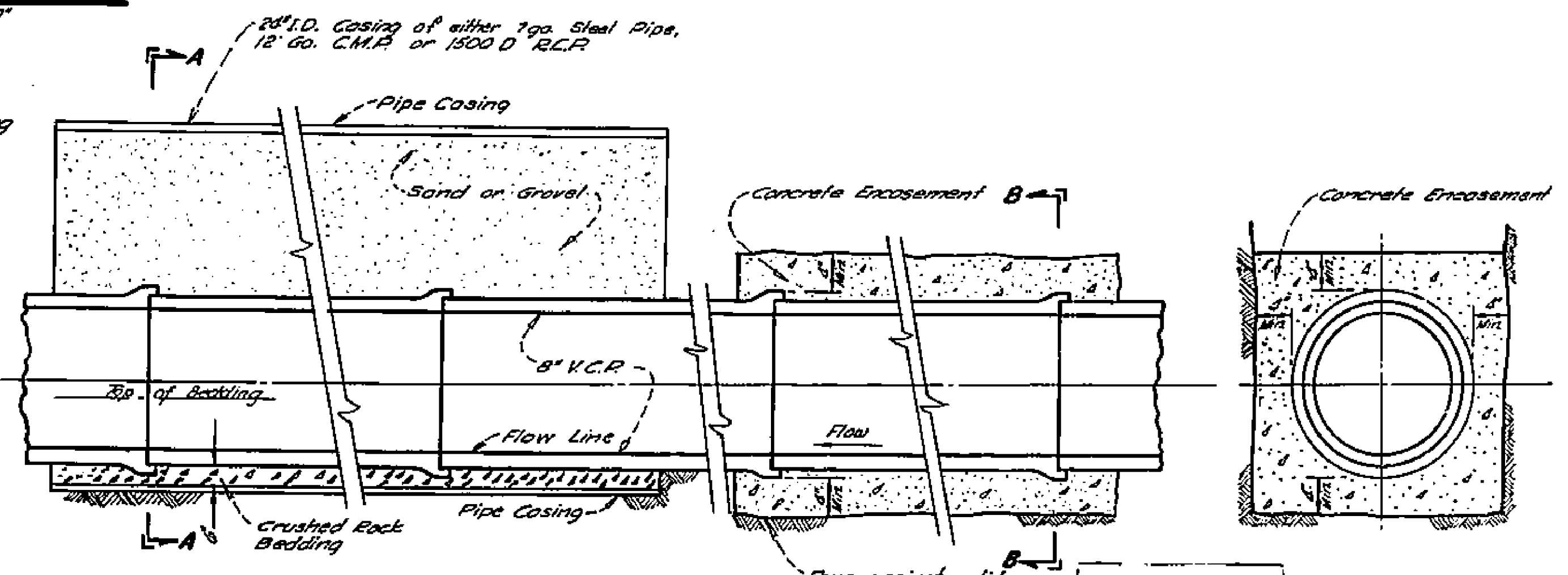
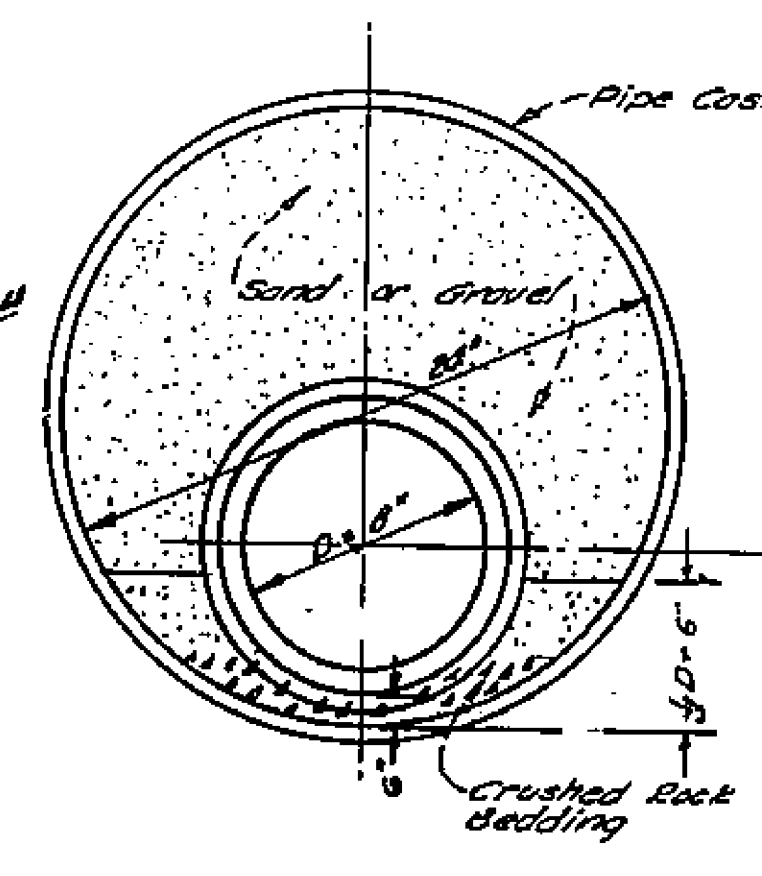
Standard Plans Nos. 107, 108, 109, 123, 139, 140-D, 141-B, 141-D, 141-E, 143



**VICINITY MAP**



**CURB INLET**  
Scale: 1/2" = 1'-0"



**DETAIL PIPE CASING AND CONCRETE ENCASUREMENT**  
Not to Scale

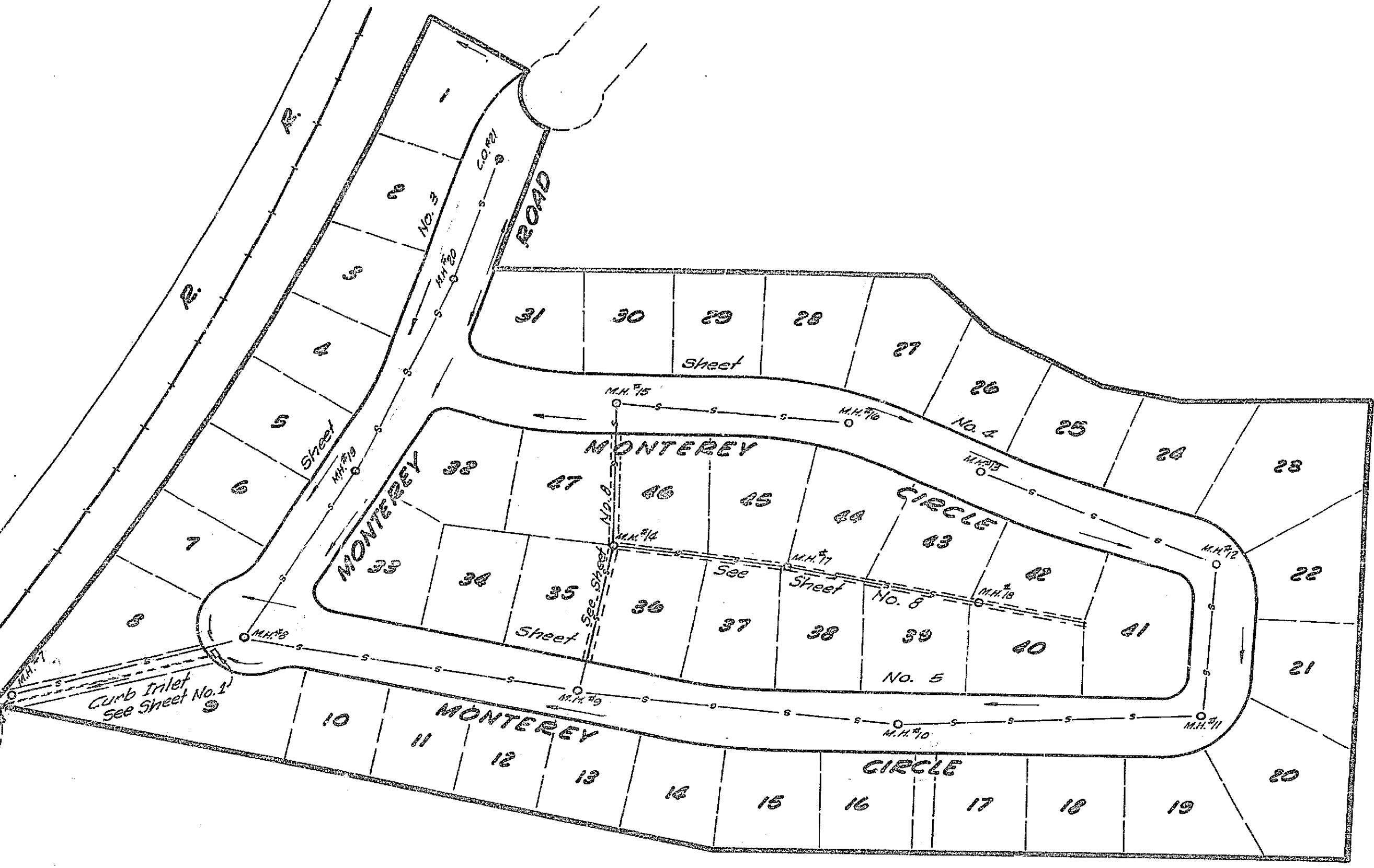
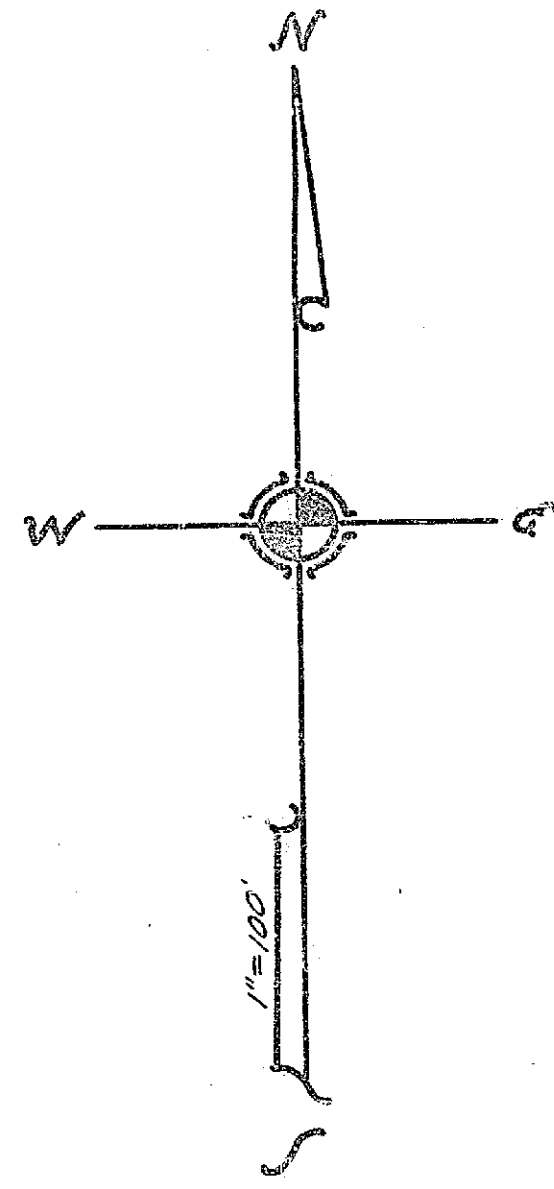
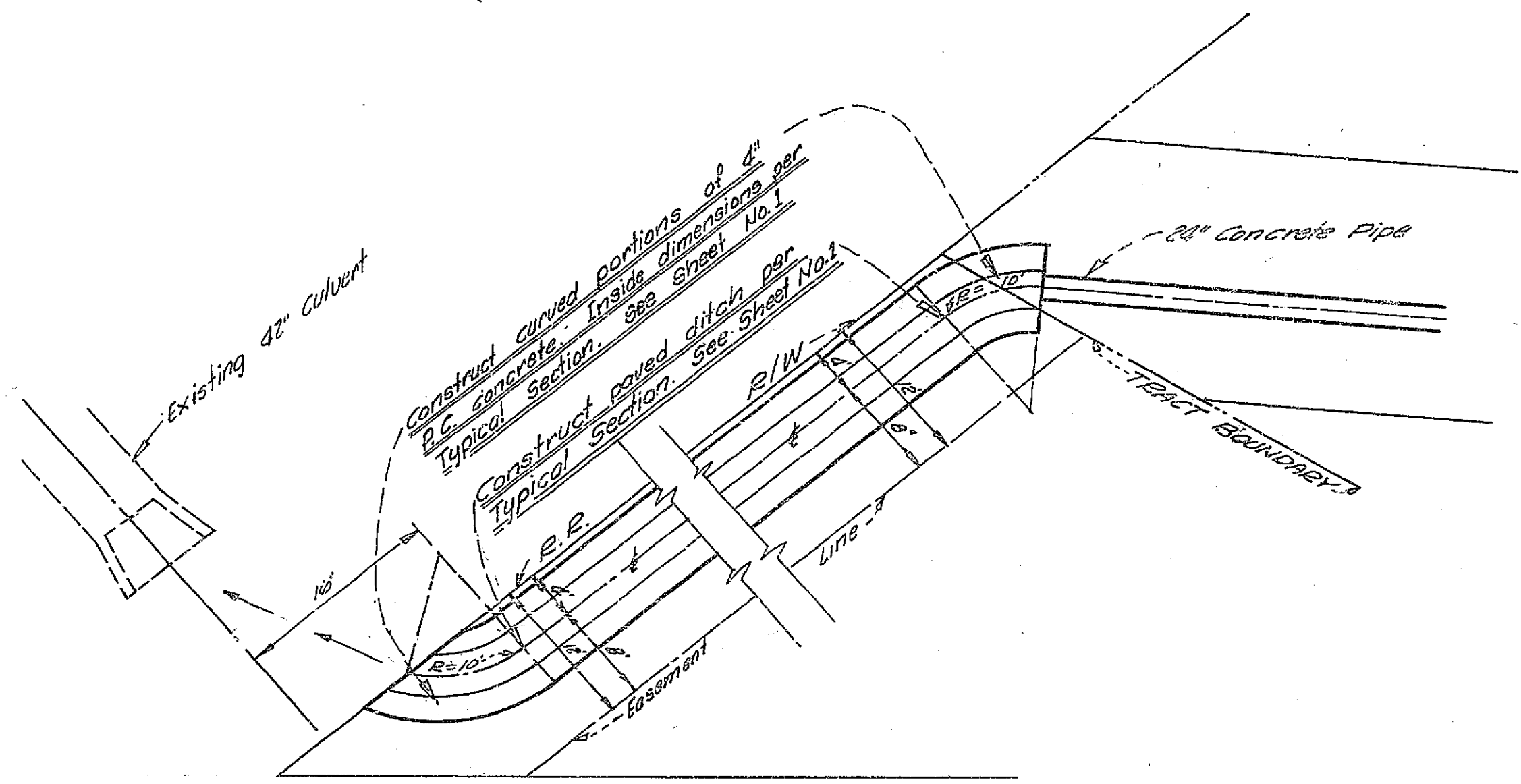
CITY ENGINEERING DEPT.

IMPROVEMENT PLANS  
**MONTEREY MANOR**  
CITY OF RIVERSIDE CALIF.  
Jan 1954 Sheet 1 of 8 D-160

118

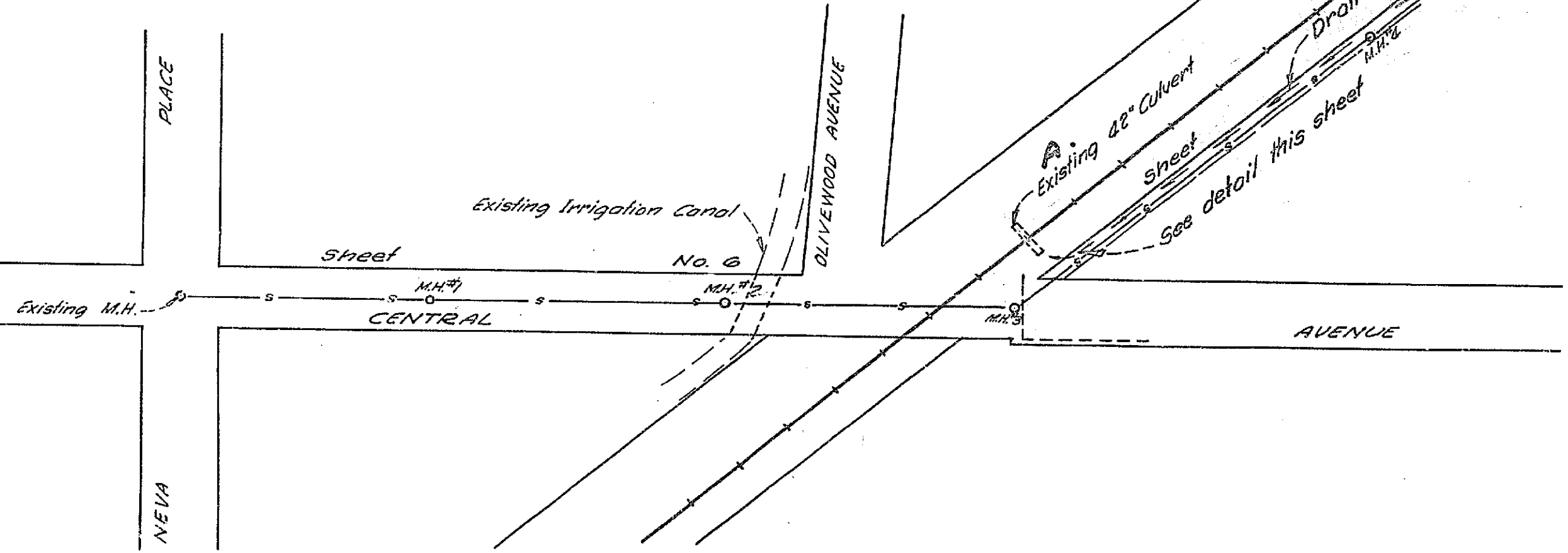
PROPERTY OF  
CITY OF RIVERSIDE  
CITY ENGINEERING DEPT.

CITY OF RIVERSIDE  
CITY ENGINEERING DEPT.



CENTRAL AVENUE

**DETAIL  
DRAINAGE DITCH**  
Scale: 1" = 10'



**LEGEND**  
 Direction of Surface Drainage ———— M.H.  
 Sewer Main and Manhole ———— M.H.  
 24" Concrete Drain Pipe ———— C.P.  
 Sewer Main & Cleanout ———— S.C.

Approved this 29<sup>th</sup> day of January, 1954.  
*M. H. Irvine*  
 CITY ENGINEER, CITY OF RIVERSIDE

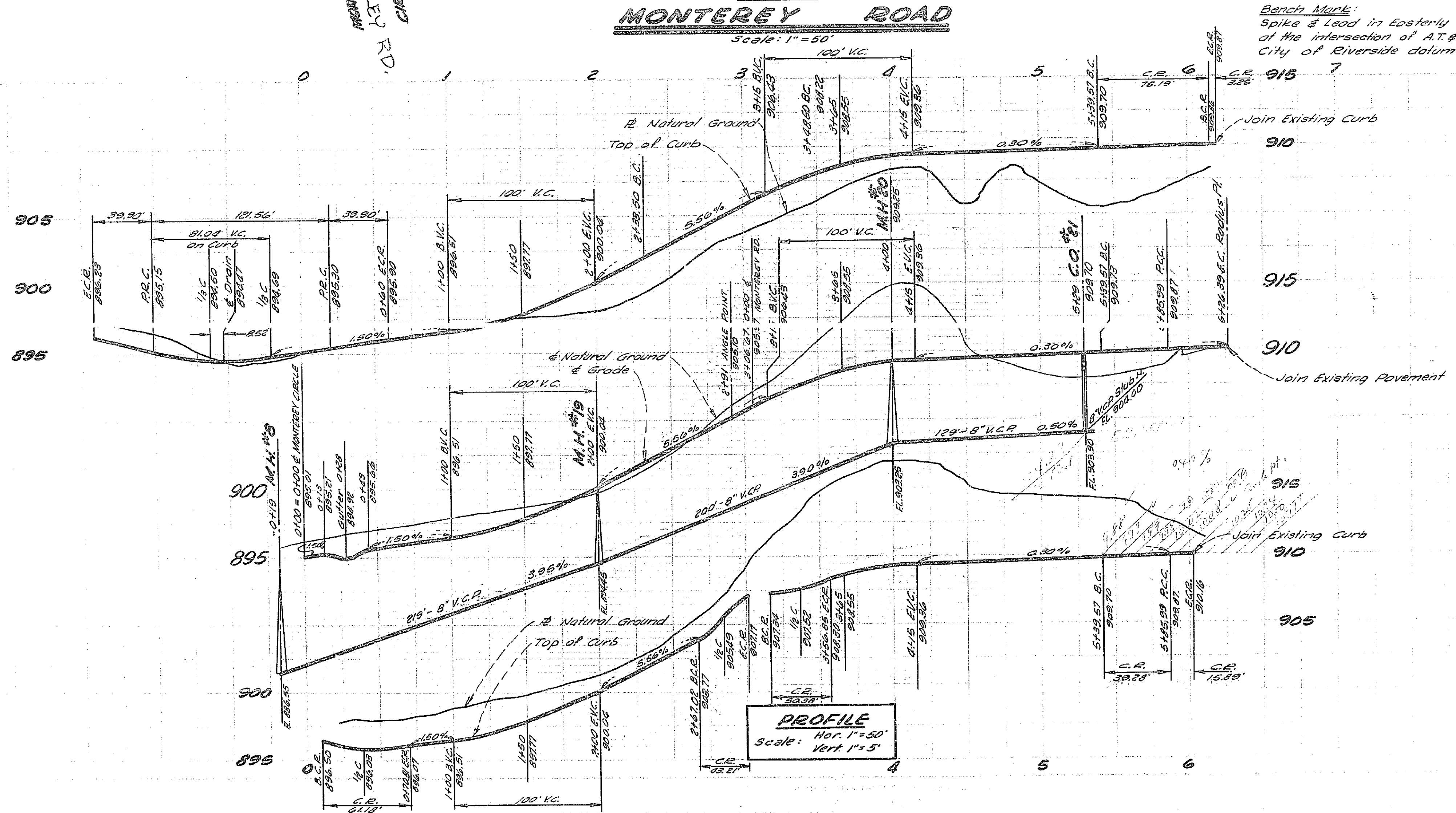
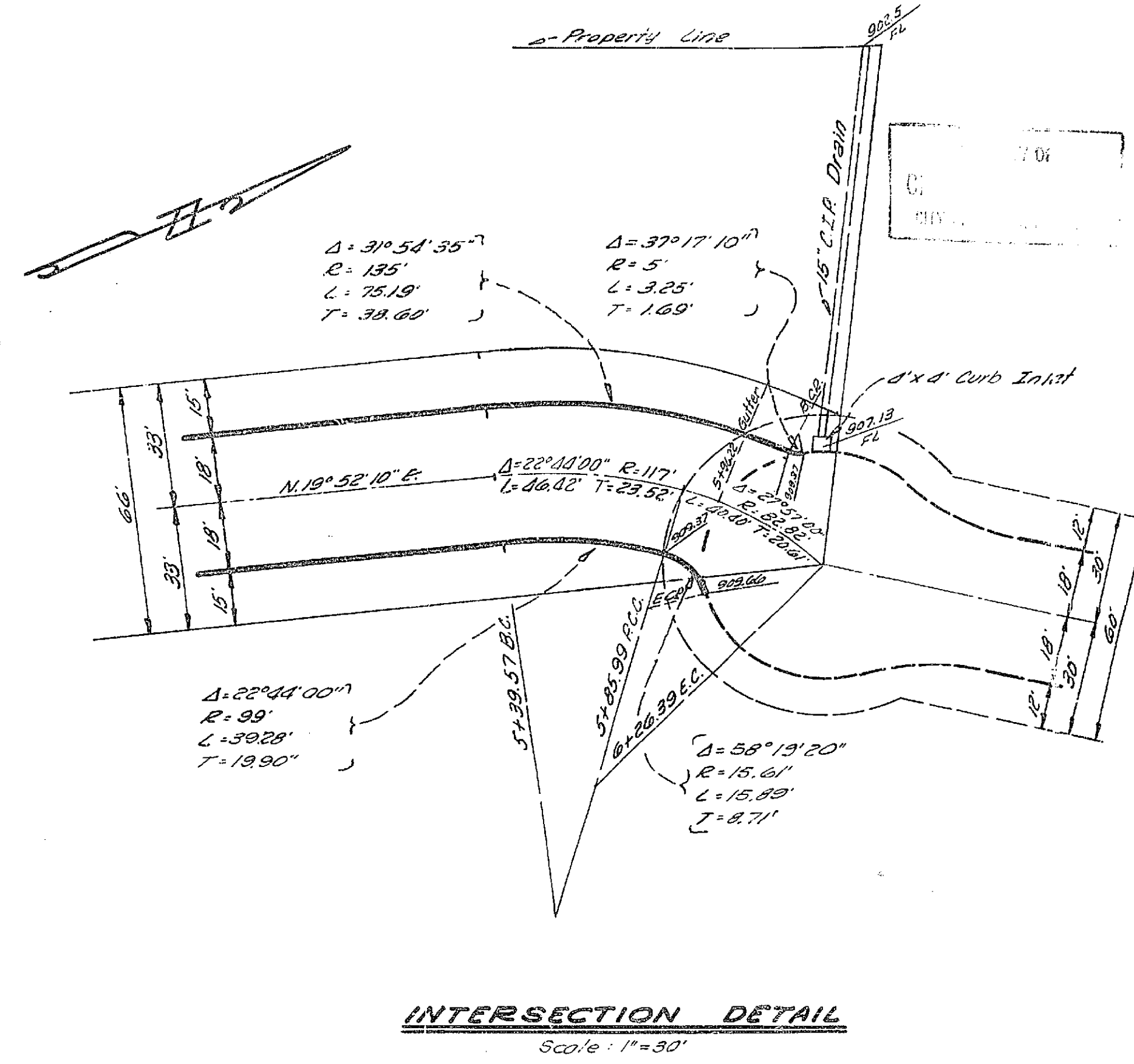
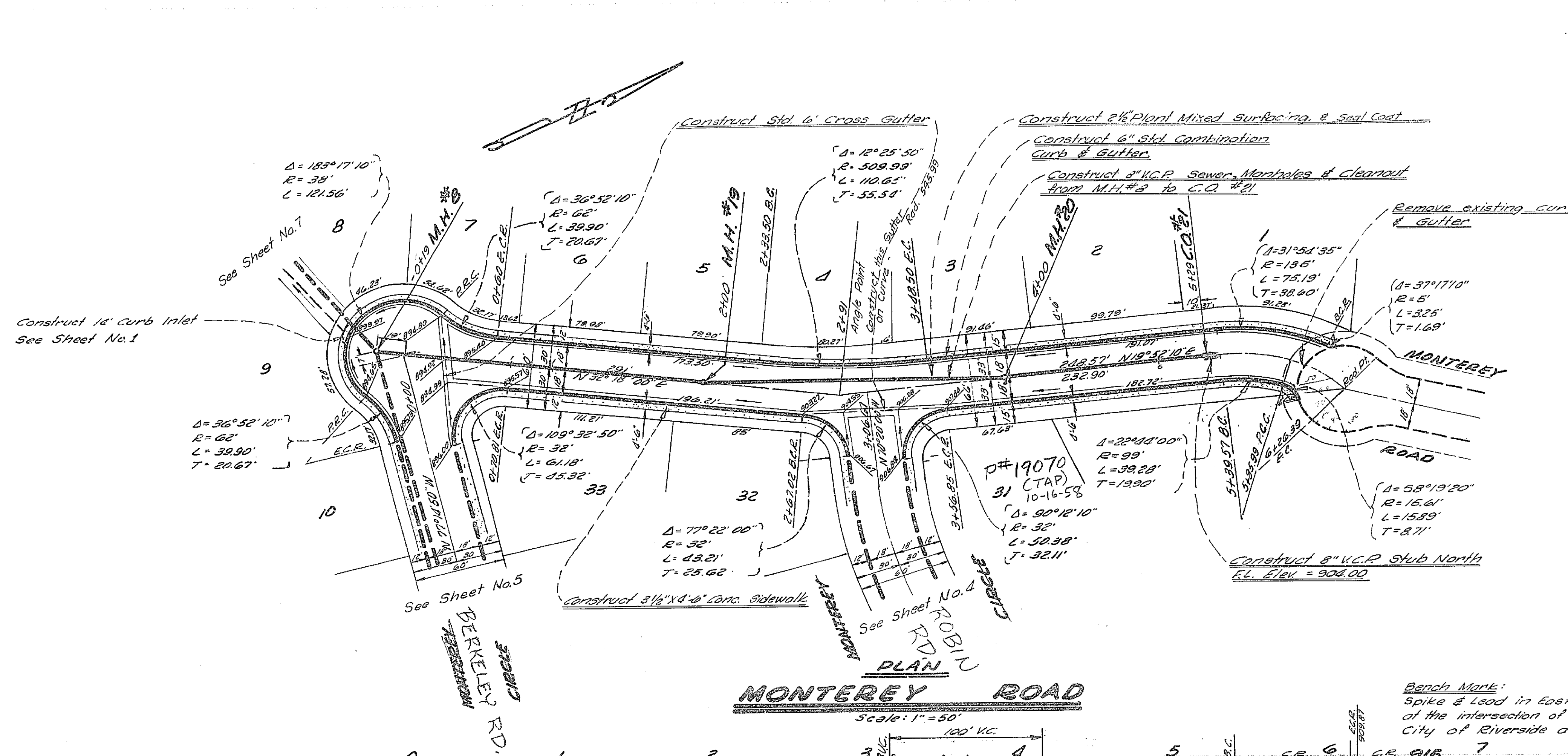
PROPERTY OF  
CITY OF RIVERSIDE  
CITY ENGINEERING DEPT.

PROPERTY OF  
CITY OF RIVERSIDE  
CITY ENGINEERING DEPT.

**INDEX MAP**  
Scale: 1" = 100'

IMPROVEMENT PLANS  
**MONTEREY MANOR**  
CITY OF RIVERSIDE CALIF.  
Jan. 1954 Sheet 2 of 5 7-100

1118



Approved this 20th day of January, 1954.  
M. H. Irvine,  
CITY ENGINEER, CITY OF RIVERSIDE

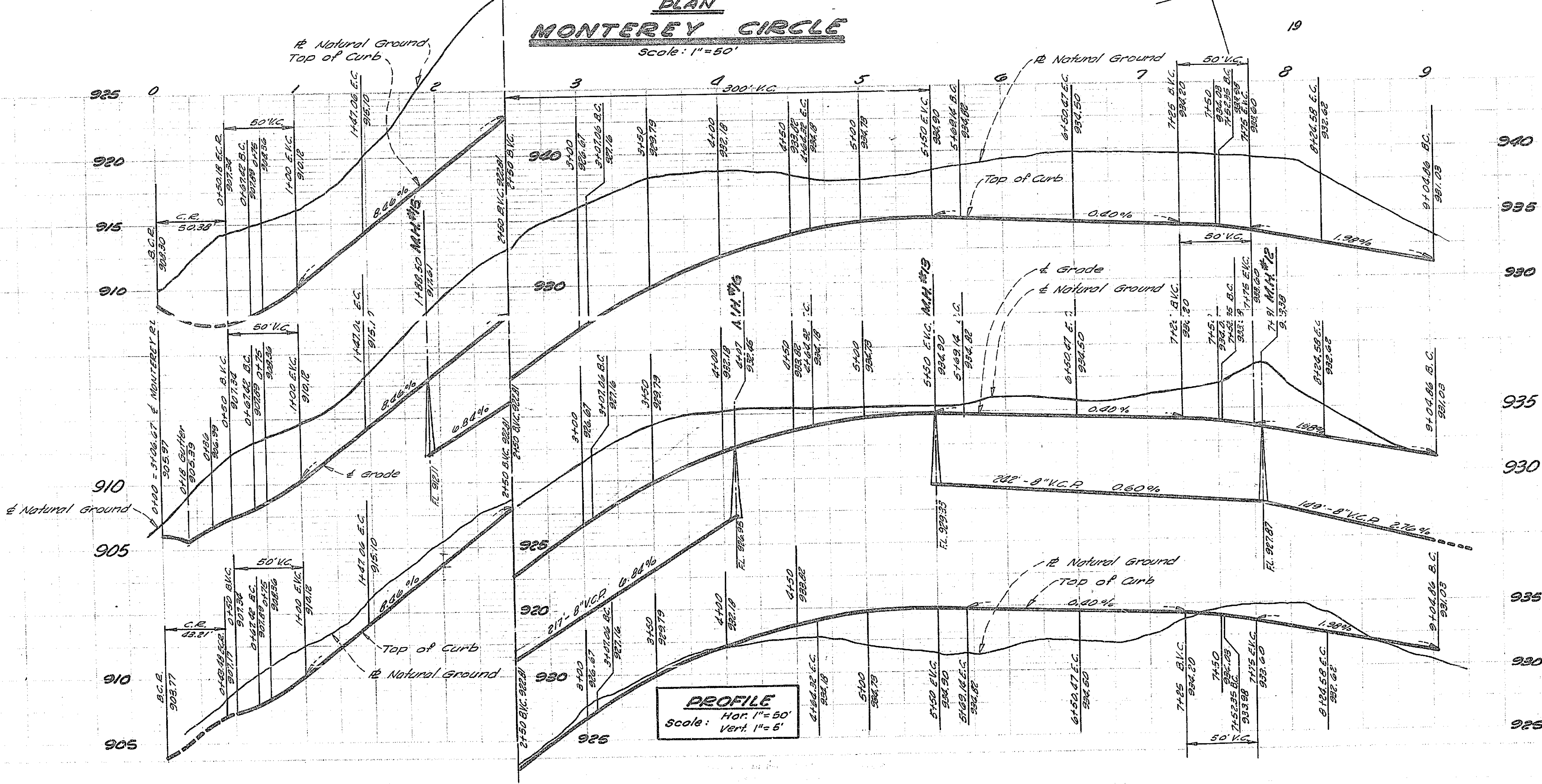
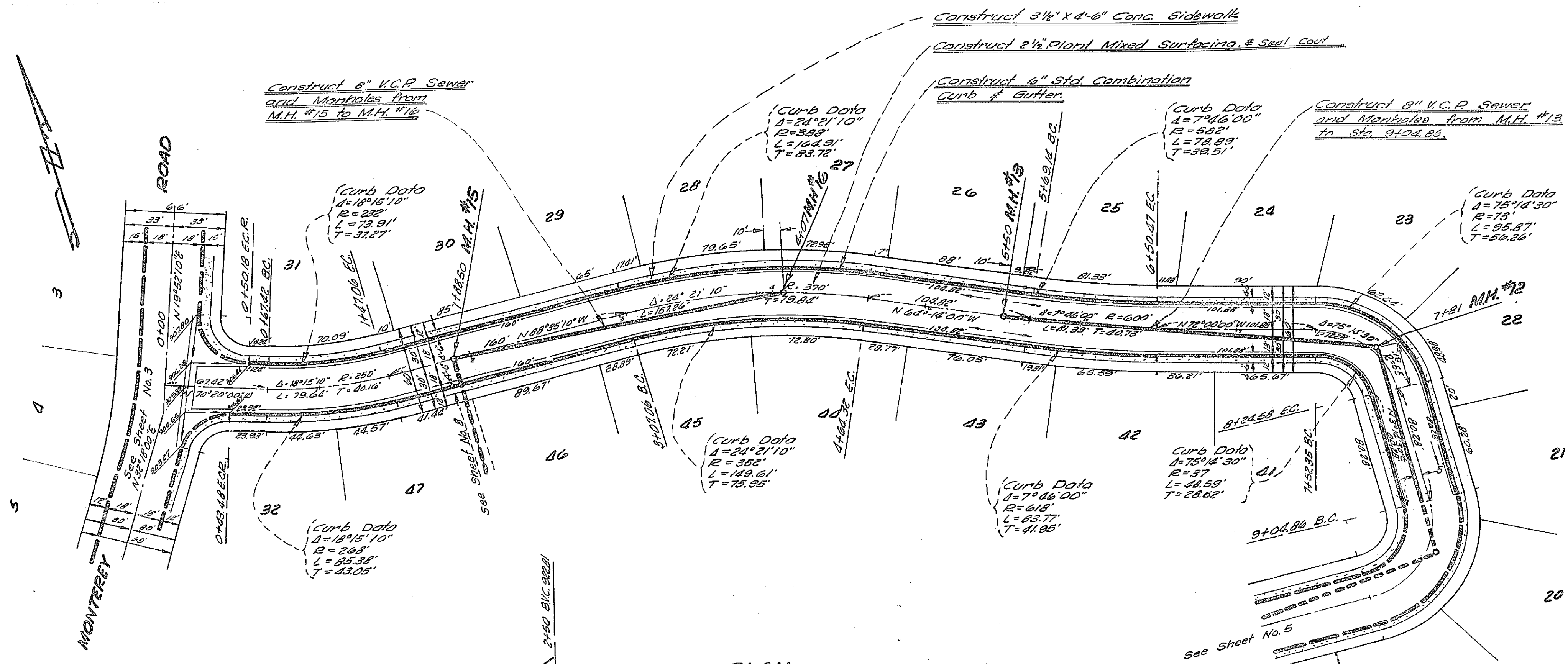
PROPERTY OF  
CITY ENGINEERING DEPT.

IMPROVEMENT PLANS  
**MONTEREY MANOR**  
CITY OF RIVERSIDE CALIF.  
Jan. 1954. Sheet 3 of 8 D-180

1118

PROPERTY OF  
CITY OF RIVERSIDE  
CITY ENGINEERING DEPT.

CITY ENGINEERING DEPT.



Bench Mark:  
Spike & Lead in Easterly Headwall of Culvert at the intersection of A.T. & S.F. R.R. & Center City of Riverside datum. Elev. = 875.31

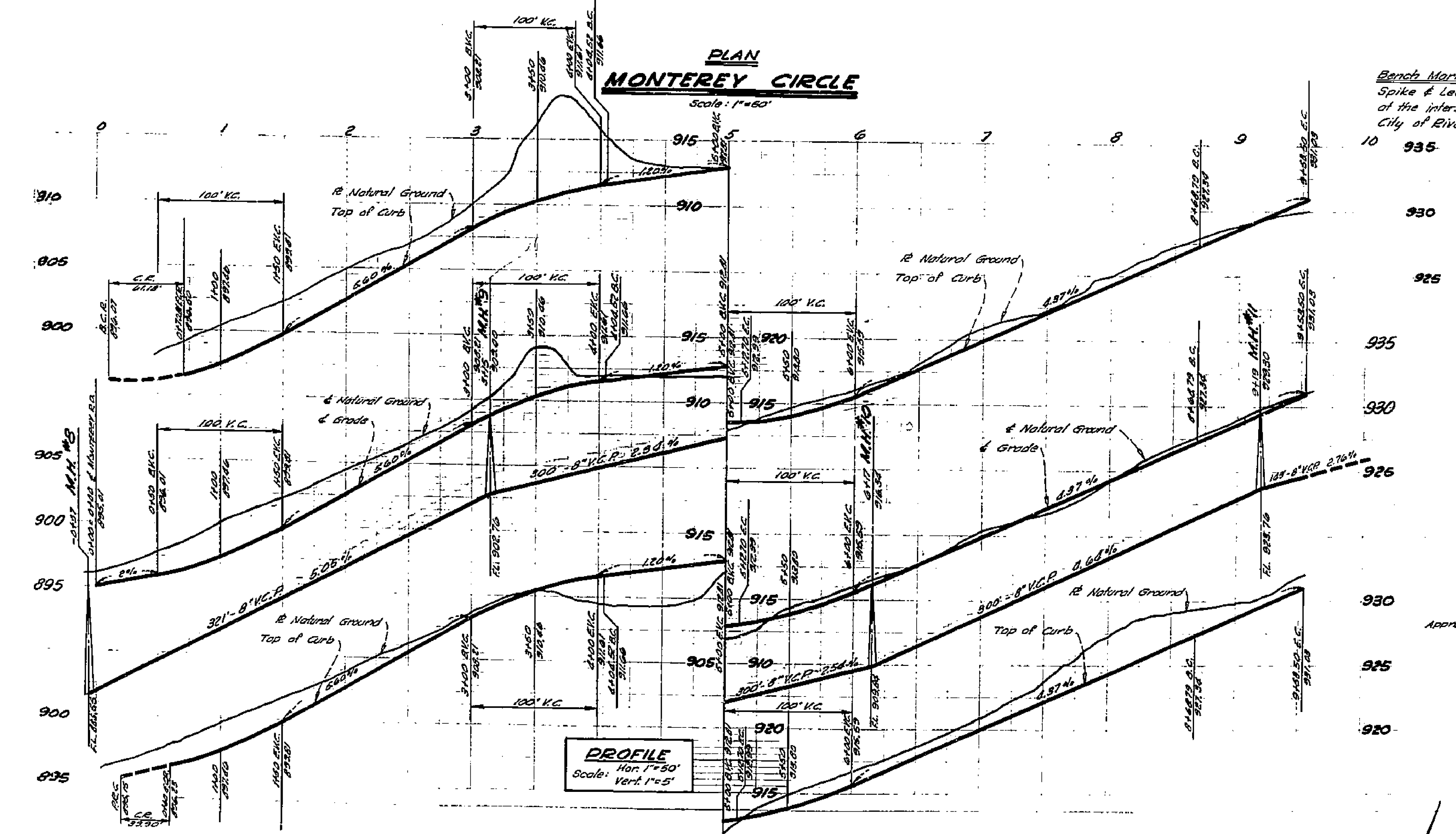
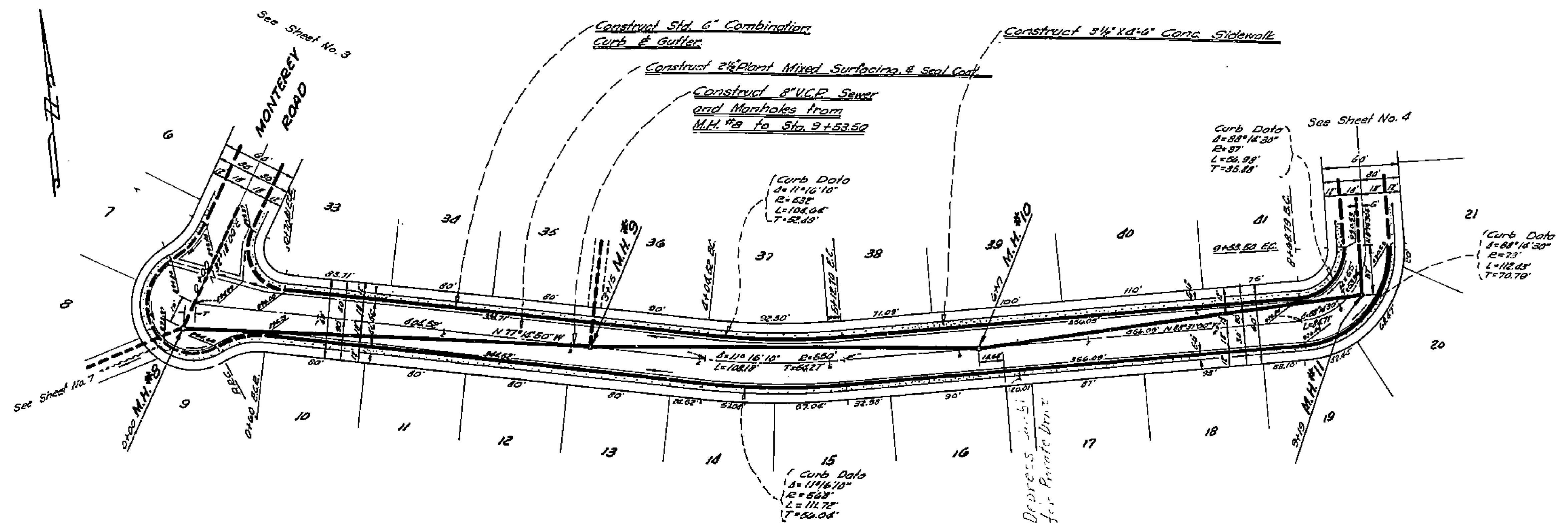
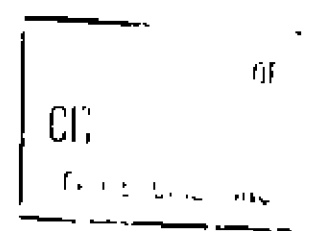
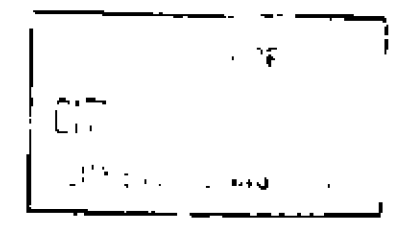
PROPERTY OF  
CITY OF RIVERSIDE  
CITY ENGINEERING DEPT.

PROPERTY OF  
CITY OF RIVERSIDE  
CITY ENGINEERING DEPT.

Approved this 28th day of January, 1954  
M. H. Jarvis  
CITY ENGINEER, CITY OF RIVERSIDE

IMPROVEMENT PLANS  
MONTEREY MANOR  
CITY OF RIVERSIDE CALIF.  
Jan. 1954 Sheet 4 of 4 D-1

1118



Bench Mark:  
Spike & Lead in Easterly Headwall of Culvert A-12  
of the intersection of A.T. & S.F. R.R. & Central Ave.  
City of Riverside datum. Elev. = 875.31

Approved this 22<sup>nd</sup> day of January, 1954

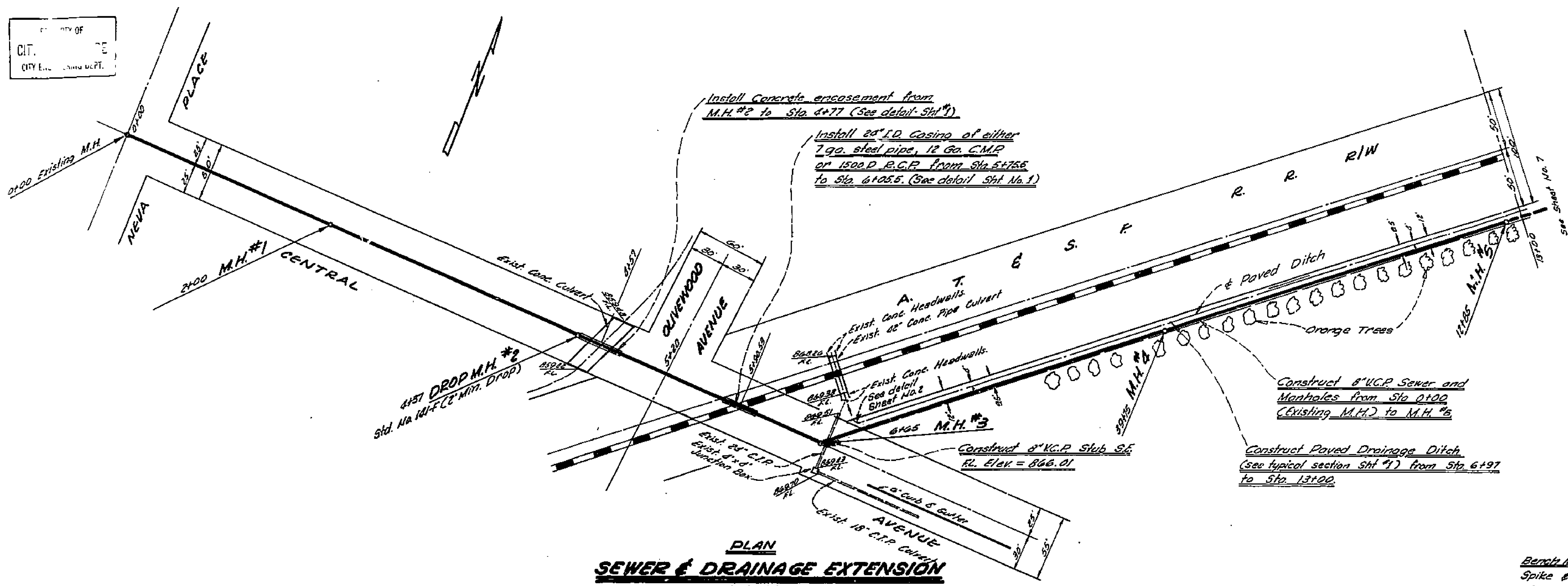
M. N. Deering  
CITY ENGINEER, CITY OF RIVERSIDE

IMPROVEMENT PLANS  
**MONTEREY MANOR**  
CITY OF RIVERSIDE  
L.H.W.  
Jan 1954 Sheet 5 of 8 D-100

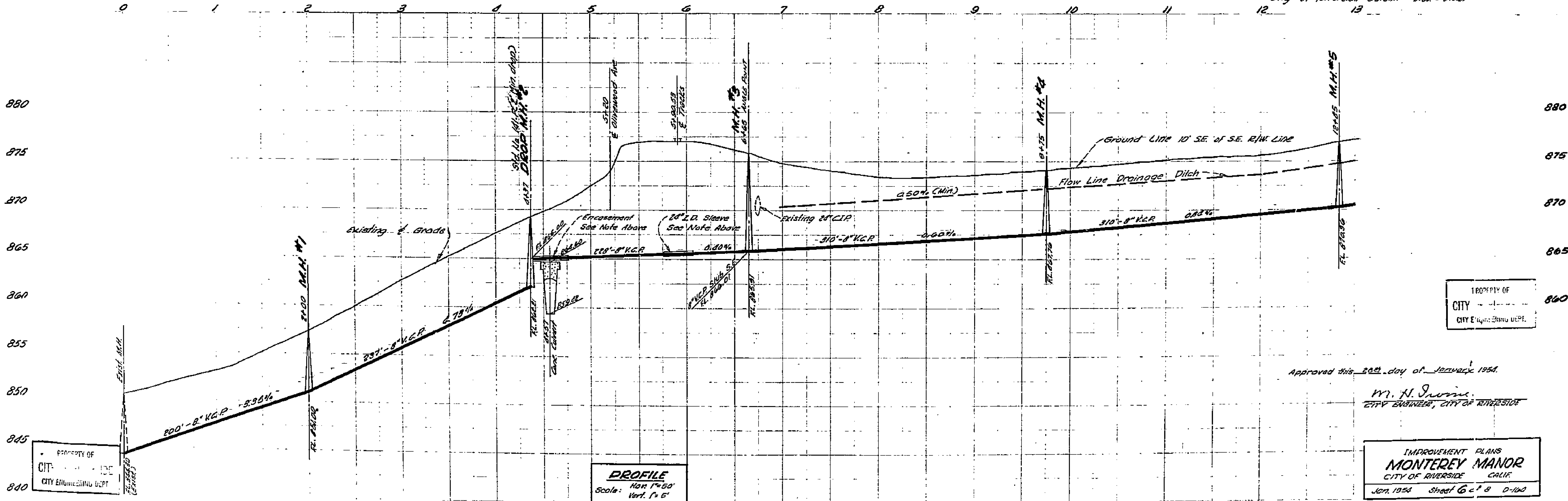
1118

PROPERTY OF  
CITY OF RIVERSIDE  
CITY ENGINEERING DEPT.

PROPERTY OF  
CITY OF RIVERSIDE  
CITY ENGINEERING DEPT.



Bench Mark:  
Spike & Lead in Easterly Headwall of Culvert A-12  
of the intersection of A.T. & S.F. R.R. & Central Ave.  
City of Riverside datum. Elev. = 875.31



PROPERTY OF  
CITY OF RIVERSIDE  
CITY ENGINEERING DEPT.

Approved this 20th day of January 1954.

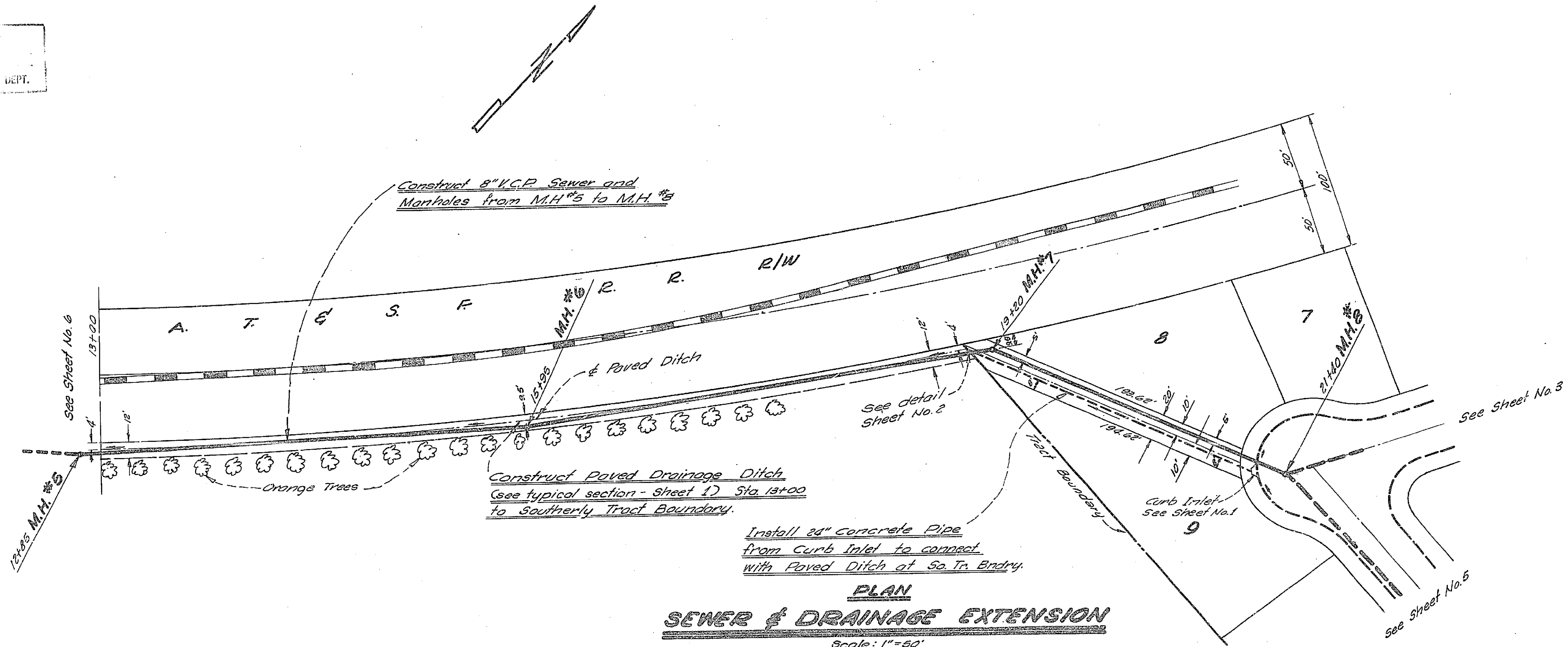
*M. H. Irvine*  
CITY ENGINEER, CITY OF RIVERSIDE

IMPROVEMENT PLANS  
**MONTEREY MANOR**  
CITY OF RIVERSIDE CALIF.  
JAN. 1954 Sheet 6 of 8 D-100

1118

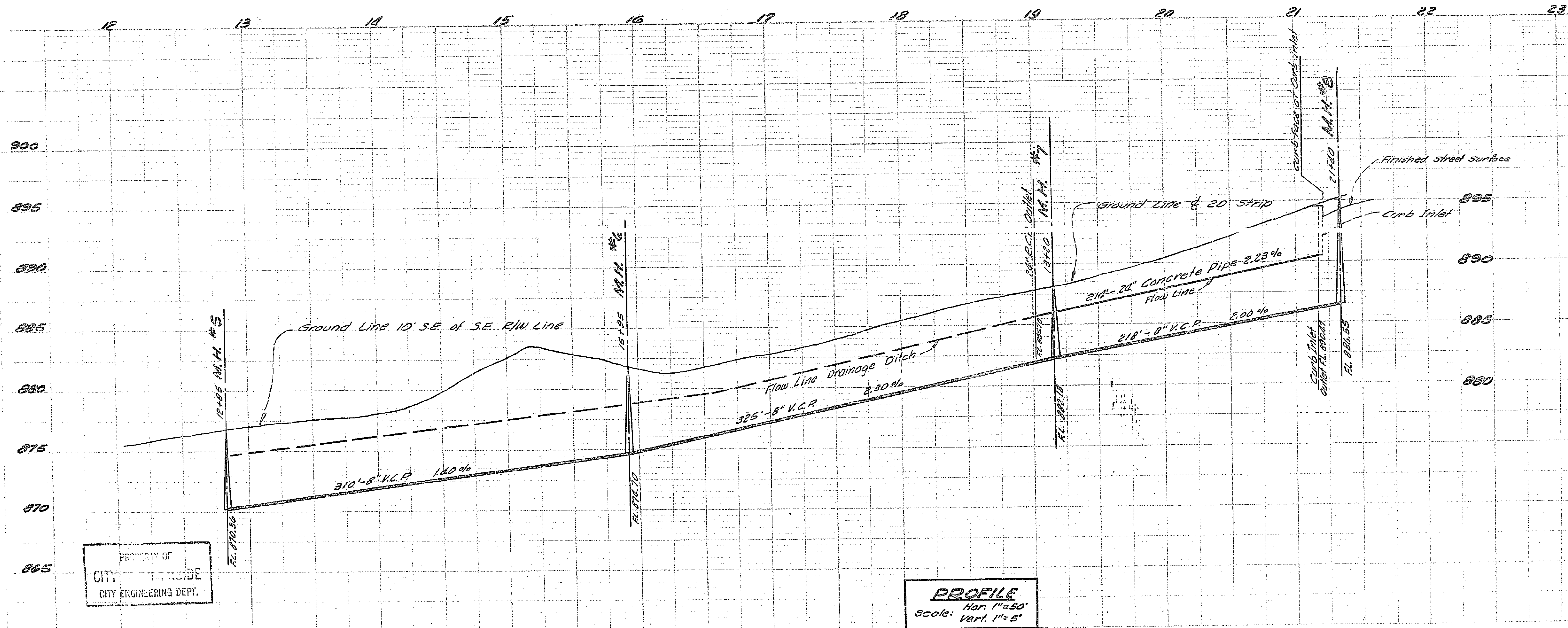
CITY  
CITY ENGINEERING DEPT.

PROPERTY OF  
CITY  
CITY ENGINEERING DEPT.



**PLAN**  
**SEWER & DRAINAGE EXTENSION**  
Scale: 1"=50'

Bench Mark:  
Spike & Lead in Easterly Headwall of Culvert A-12  
at the intersection of A.T. & S.F. R.R. & Central Ave.  
City of Riverside datum. Elev. = 875.31



**PROFILE**  
Hor. 1"=50'  
Vert. 1"=5'

Approved this 28<sup>th</sup> day of January, 1954

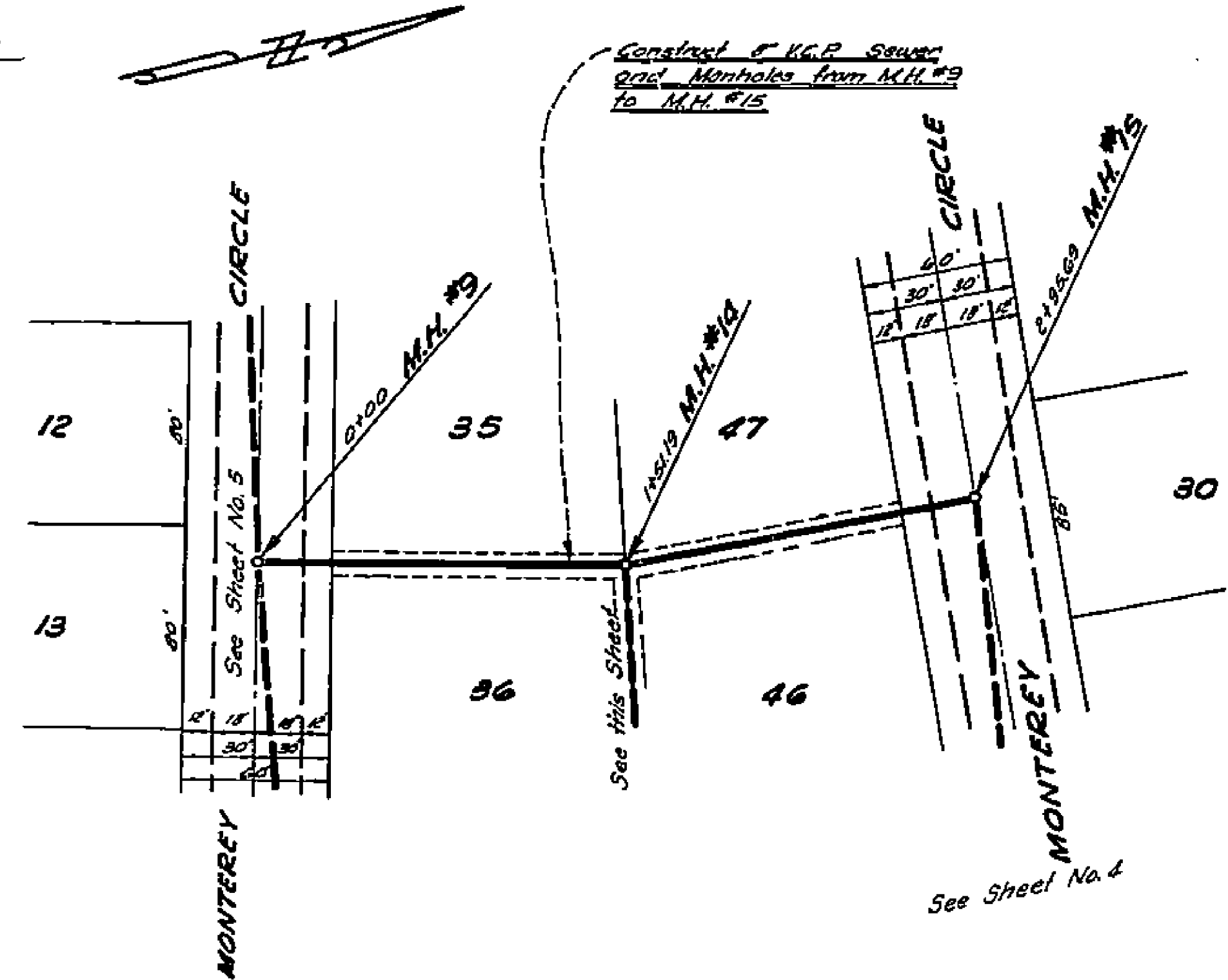
M. H. Jarvis  
CITY ENGINEER, CITY OF RIVERSIDE

PROPERTY OF  
CITY OF RIVERSIDE  
CITY ENGINEERING DEPT.

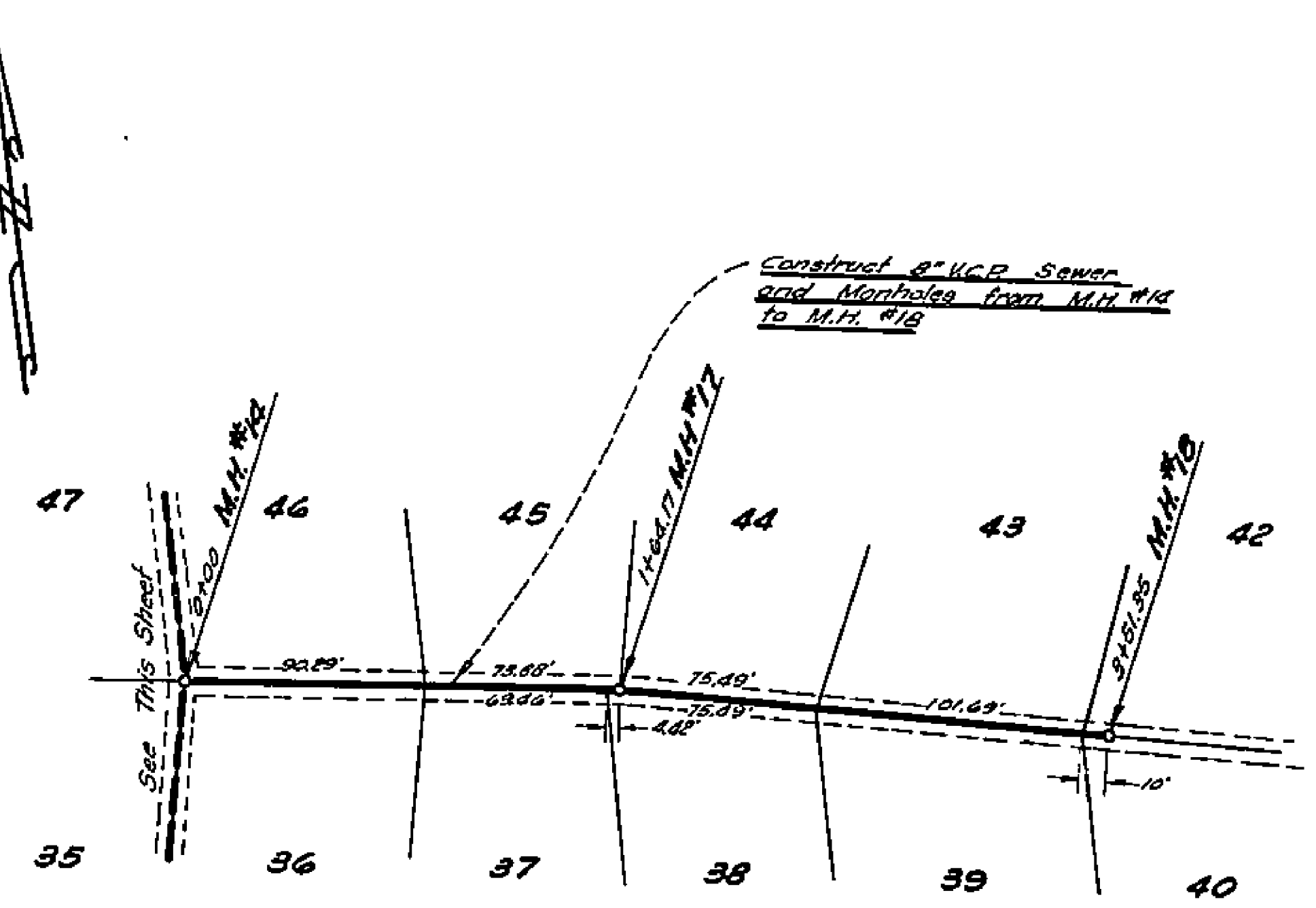
PROPERTY OF  
CITY OF RIVERSIDE  
CITY ENGINEERING DEPT.

IMPROVEMENT PLANS  
**MONTEREY MANOR**  
CITY OF RIVERSIDE CALIF.  
Jan. 1954 Sheet 7 of 8 D-160

1118

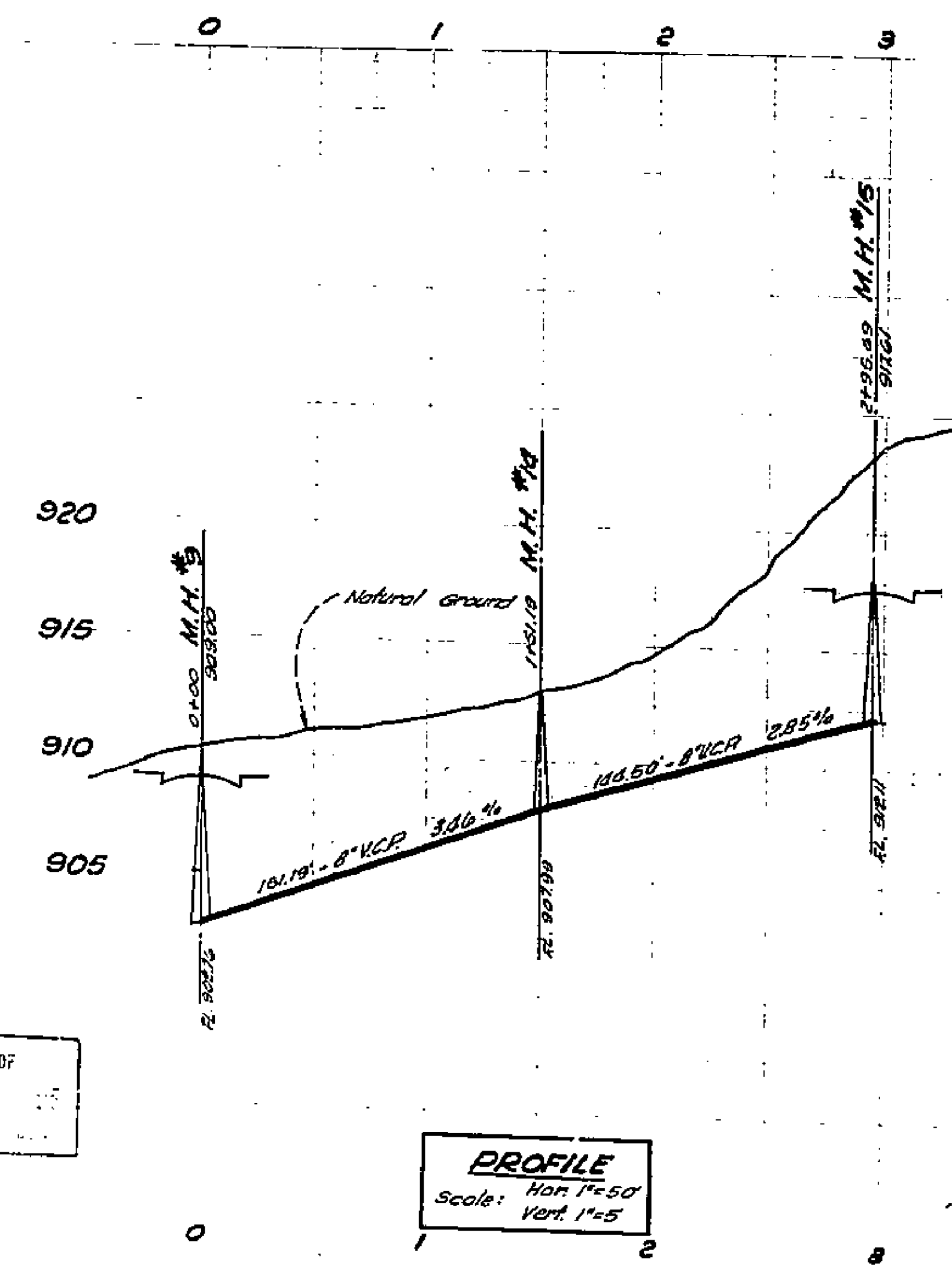


**PLAN SEWER**  
Scale: 1"=50'

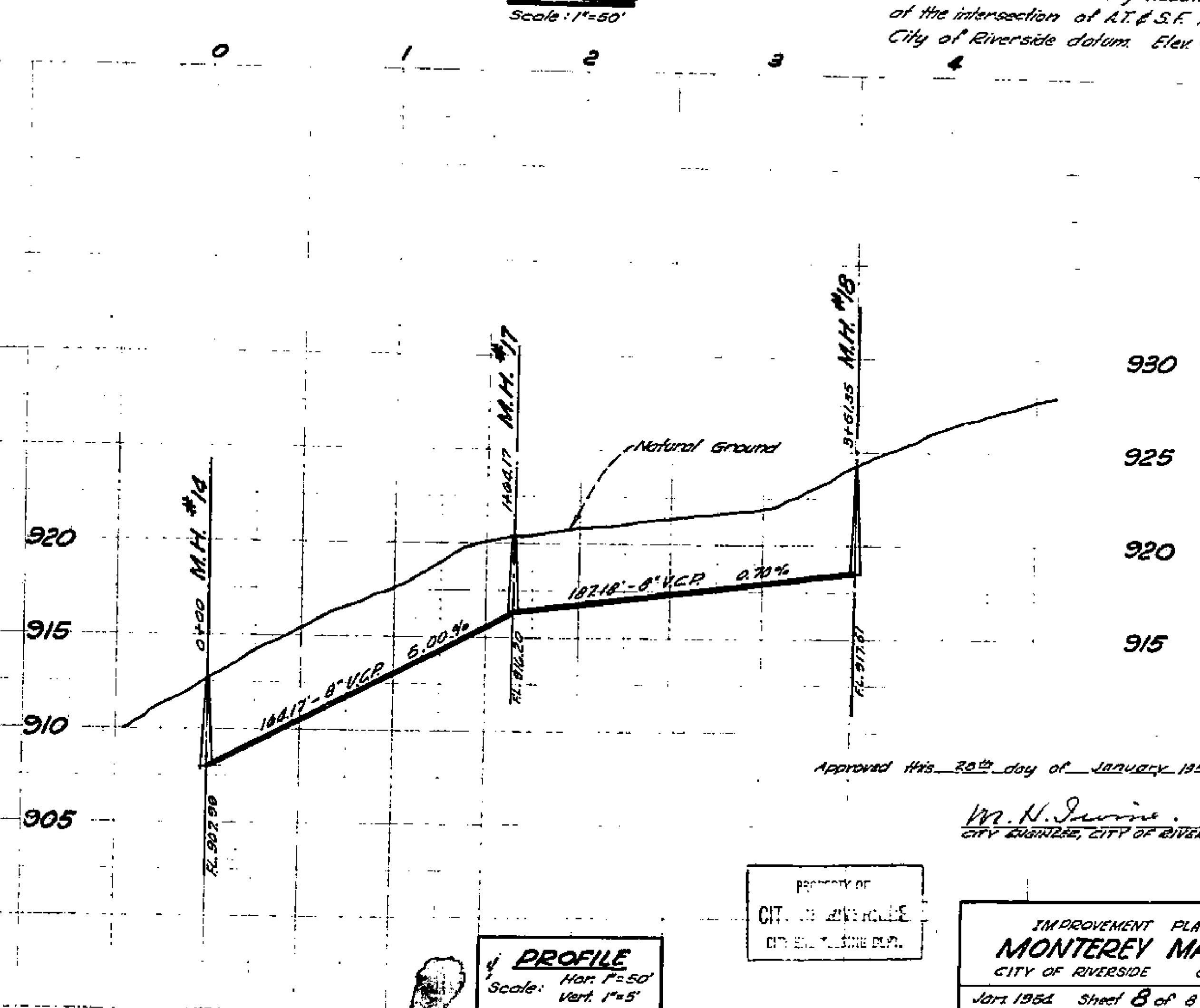


**PLAN SEWER**  
Scale: 1"=50'

Bench Mark:  
Spike & Lead in Easterly Headwall of Culvert A-2  
at the intersection of A.T. & S.F. R.R. & Central Ave.  
City of Riverside datum. Elev. = 875.31



**PROFILE**  
Hor. 1"=50'  
Vert. 1"=5'



**PROFILE**  
Hor. 1"=50'  
Vert. 1"=5'

Approved this 28th day of January 1954.

*W. N. Irvine*  
CITY ENGINEER, CITY OF RIVERSIDE

PROPERTY OF  
CITY OF RIVERSIDE  
CITY ENGINEERING DEPT.

IMPROVEMENT PLANS  
**MONTEREY MANOE**  
CITY OF RIVERSIDE CALIF.  
Jan. 1954 Sheet 8 of 8 D-104

1118