

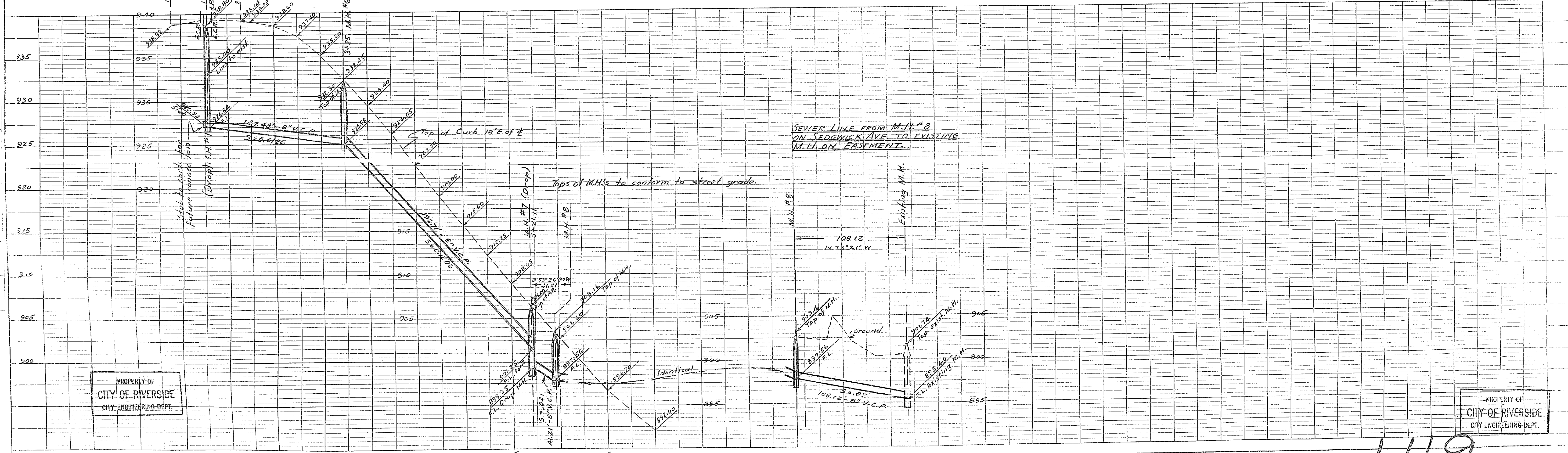
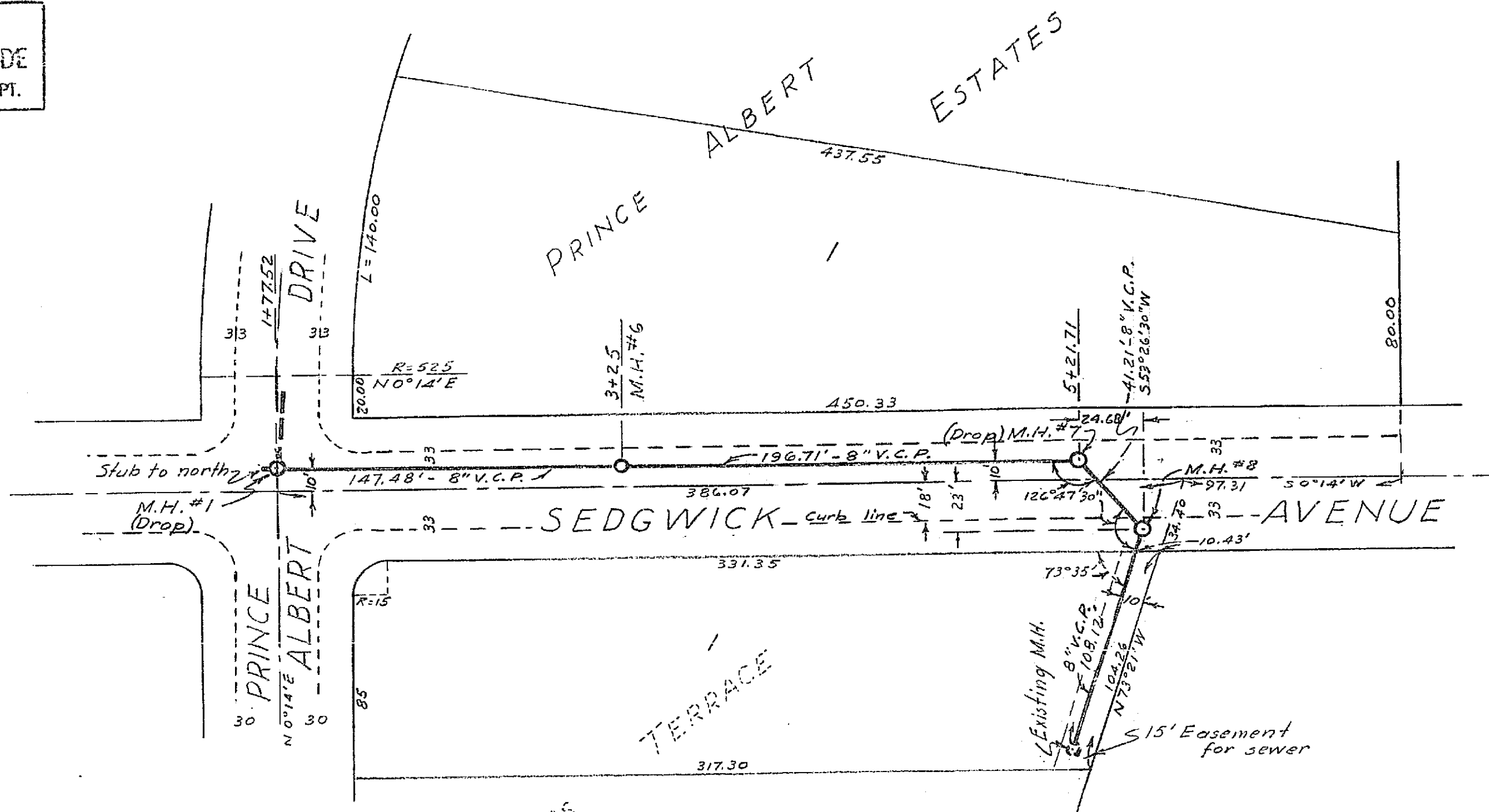
PROPERTY OF  
CITY OF RIVERSIDE  
CITY ENGINEERING DEPT.

PROPERTY OF  
CITY OF RIVERSIDE  
CITY ENGINEERING DEPT.

SEWER PLAN AND PROFILE  
OF  
SEDGWICK AVENUE  
IN  
PRINCE ALBERT ESTATES  
AND ON AN EASEMENT OVER LOT  
1 OF QUEEN'S TERRACE

- BY -  
ALBERT A. WEBB ASSOCIATES  
CIVIL ENGINEERS  
MARCH 1953 SCALE 1" = 50'

Approved this 15<sup>th</sup> day of April, 1953  
M. K. Surin  
City Engineer, City of Riverside



PROPERTY OF  
CITY OF RIVERSIDE  
CITY ENGINEERING DEPT.

PROPERTY OF  
CITY OF RIVERSIDE  
CITY ENGINEERING DEPT.

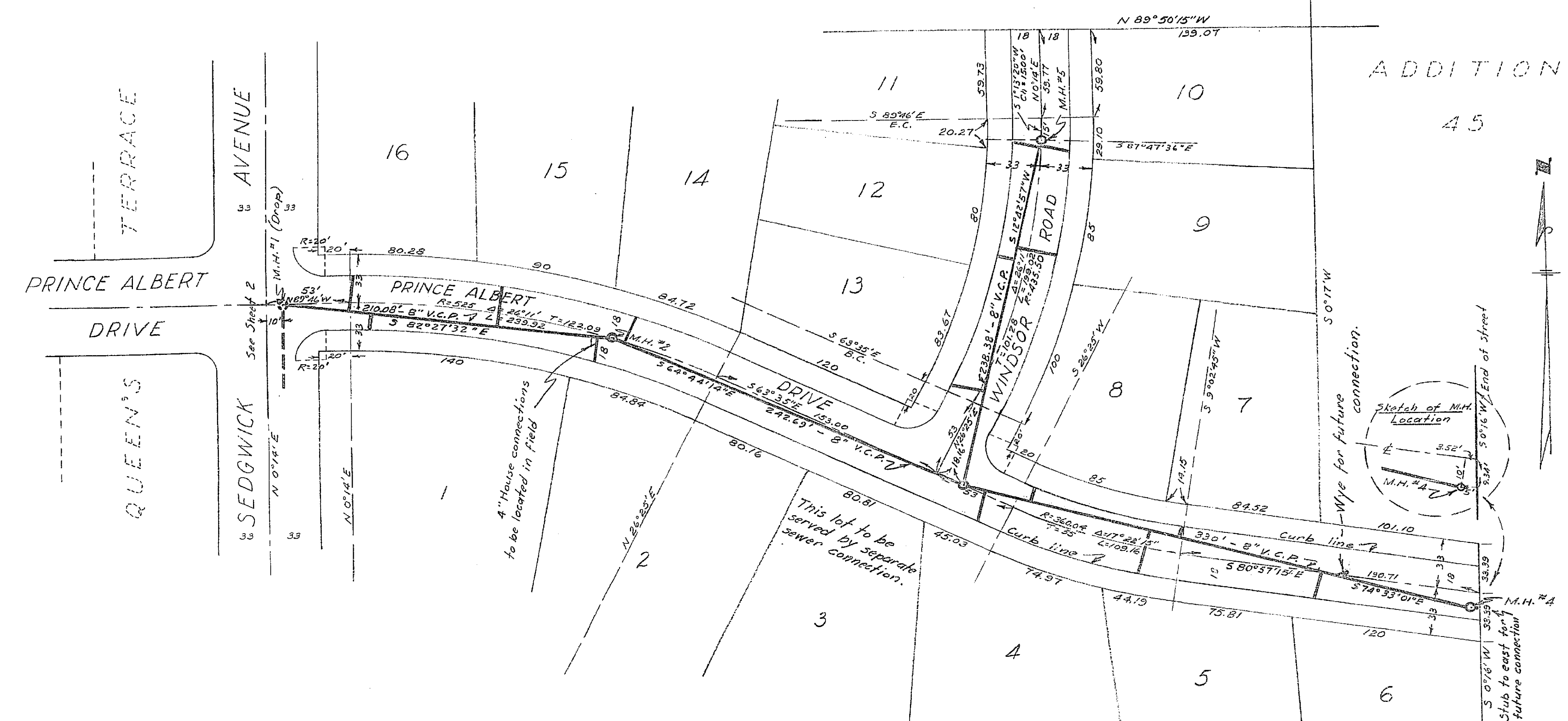
1119

PROPERTY OF  
CITY OF RIVERSIDE  
CITY ENGINEERING DEPT.

PROPERTY OF  
CITY OF RIVERSIDE  
CITY ENGINEERING DEPT.

SEWER PLAN AND PROFILE  
OF  
PRINCE ALBERT DRIVE  
AND  
WINDSOR ROAD  
IN  
PRINCE ALBERT ESTATES

- BY -  
ALBERT A. WEBB ASSOCIATES  
CIVIL ENGINEERS  
MARCH 1953 SCALE 1" = 50'

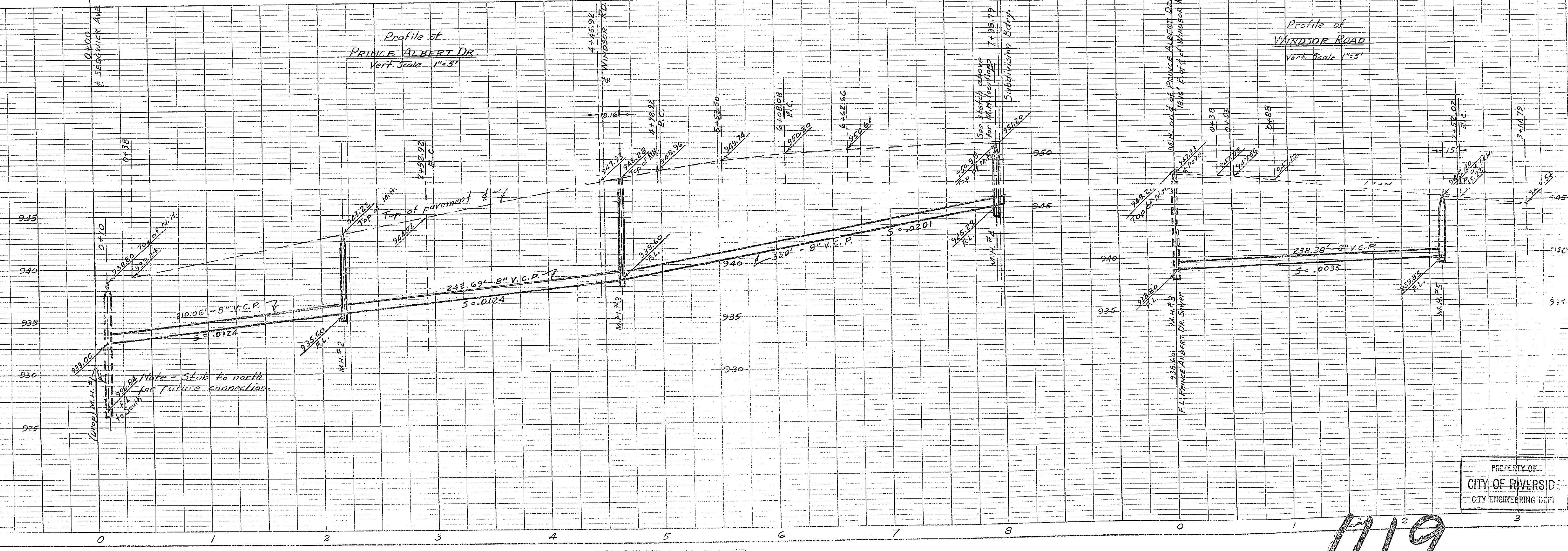


NOTE: -  
Manhole and Sewer construction to be in accordance with specifications on file with the City Engineer. Tops of M.H.'s to conform to street grades.

ESTIMATE OF QUANTITIES

Std. Manholes	6
8" V.C.P.	1515'
4" House connection	230'
Wyes	16
Drop Manholes	2

Approved this 15<sup>th</sup> day of April 1953.  
W. H. Irvine  
City Engineer, City of Riverside



PROPERTY OF  
CITY OF RIVERSIDE  
CITY ENGINEERING DEPT.

PROPERTY OF  
CITY OF RIVERSIDE  
CITY ENGINEERING DEPT.

1119

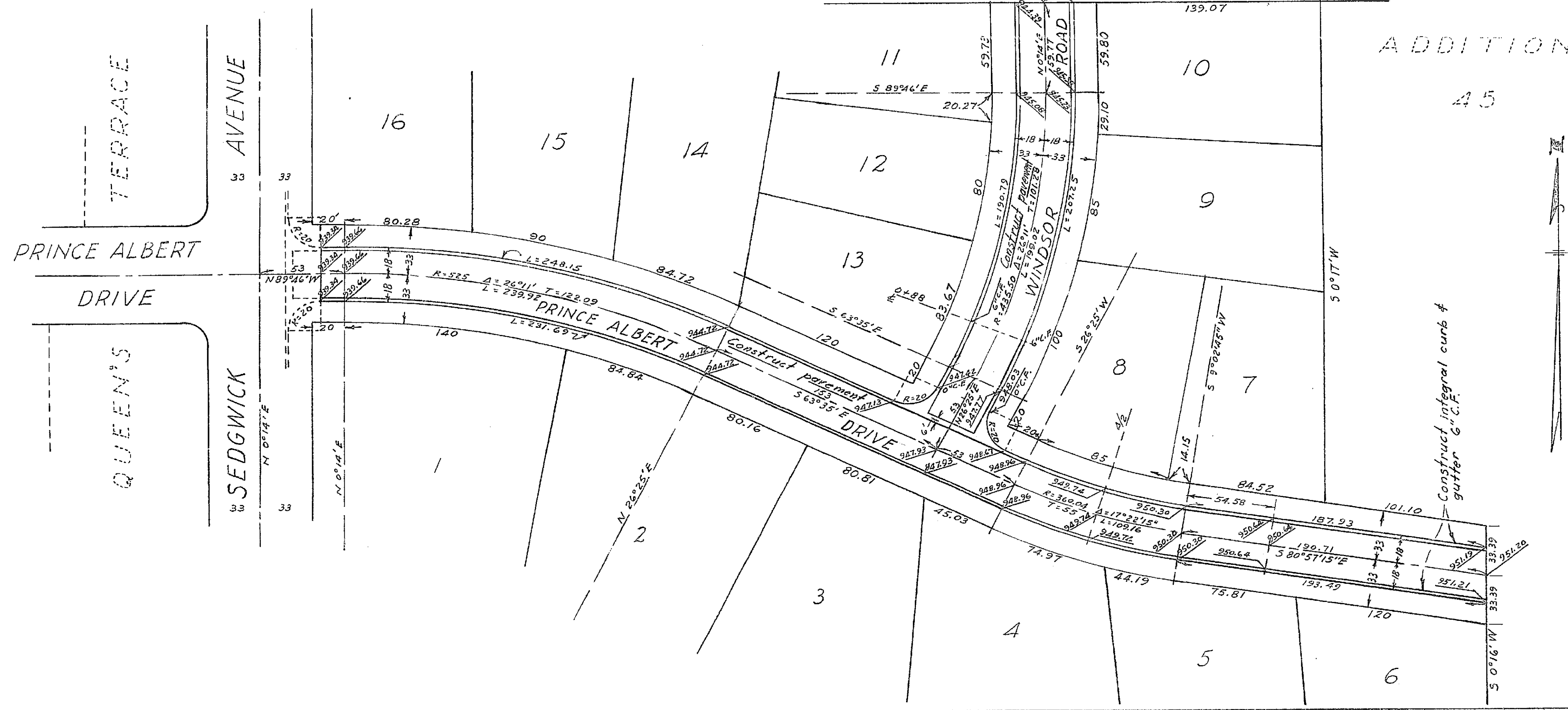
PROPERTY OF CITY OF RIVERSIDE CITY ENGINEERING DEPT.

PROPERTY OF CITY OF RIVERSIDE CITY ENGINEERING DEPT.

STREET PLAN AND PROFILE OF PRINCE ALBERT DRIVE AND WINDSOR ROAD IN PRINCE ALBERT ESTATES

BY ALBERT A WEBB ASSOCIATES CIVIL ENGINEERS

MARCH 1953 SCALE 1" = 50'



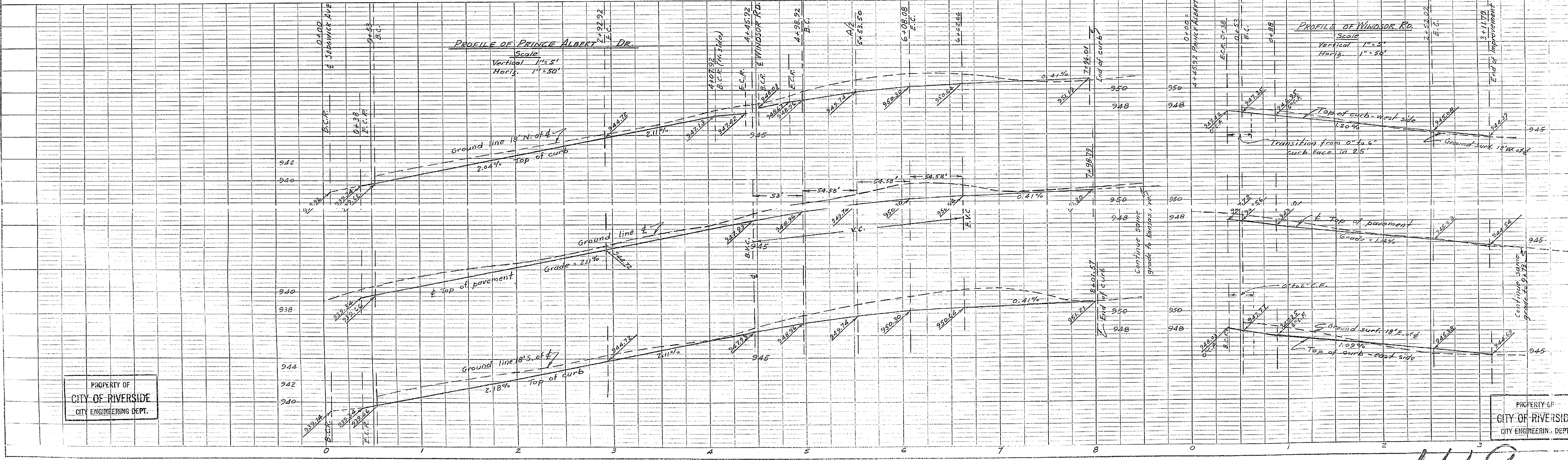
NOTES: - B.M. top of I.P. in Cap. Man. & High St. & Rancho Dr. = 97.70 Pavement to be 2" plant mix bituminous-concrete in accordance with City Specifications. Integral curb and gutter to be constructed in accordance with City Specifications, and to have 6" curb face unless otherwise specified.

Approved this 15th day of April, 1953.

W. H. Juvina City Engineer, City of Riverside

NO. 175

NO. 175



PROPERTY OF CITY OF RIVERSIDE CITY ENGINEERING DEPT.

PROPERTY OF CITY OF RIVERSIDE CITY ENGINEERING DEPT.

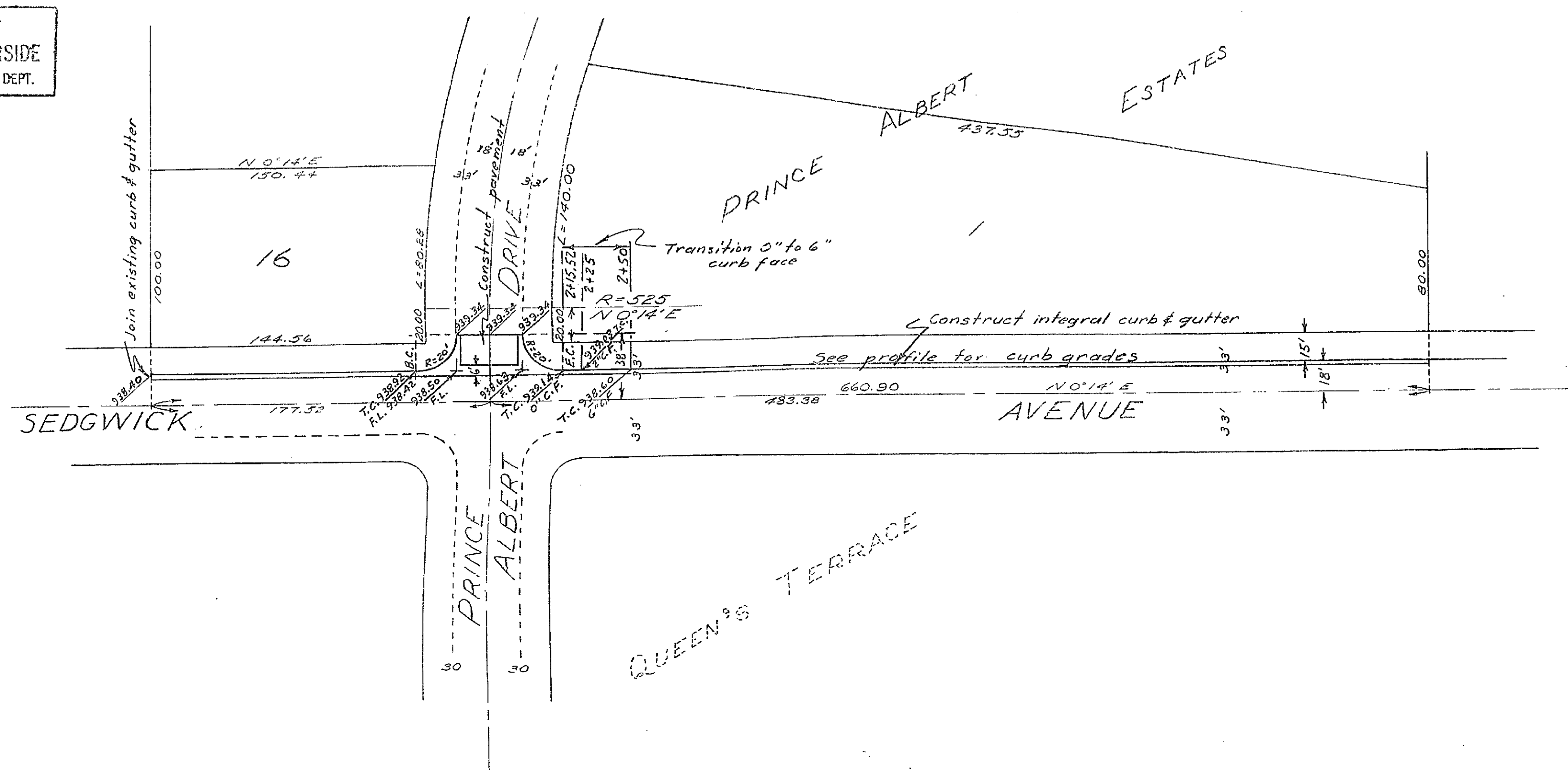
1119

PROPERTY OF  
CITY OF RIVERSIDE  
CITY ENGINEERING DEPT.

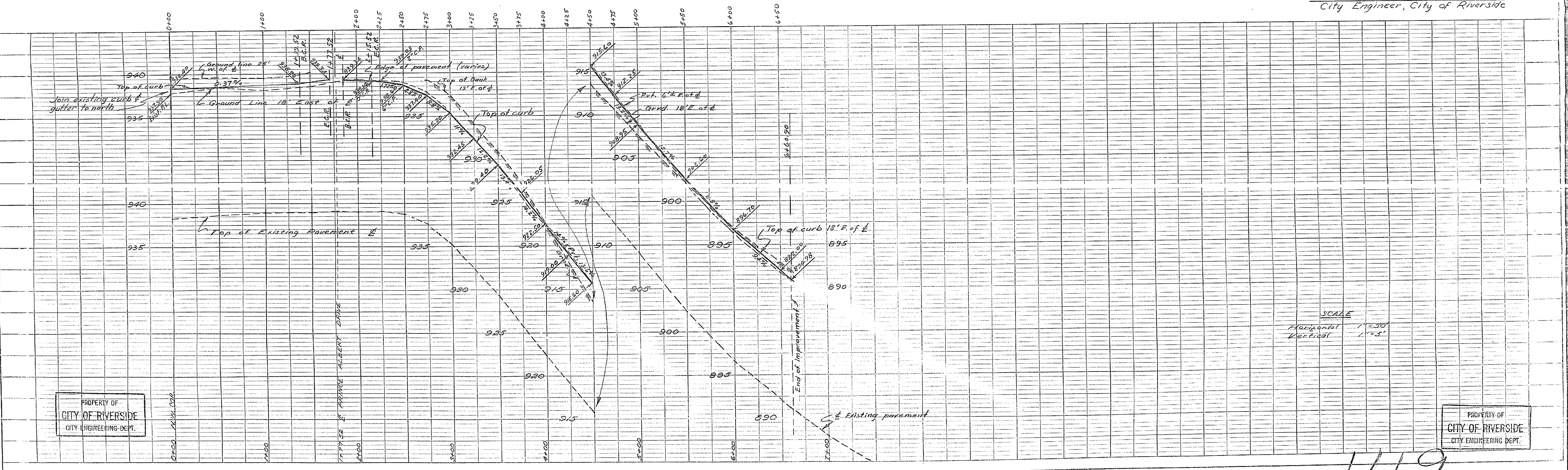
PROPERTY OF  
CITY OF RIVERSIDE  
CITY ENGINEERING DEPT.

STREET PLAN AND PROFILE  
OF  
SEDGWICK AVENUE  
IN  
PRINCE ALBERT ESTATES

- of -  
ALBERT A. WEBB ASSOCIATES  
CIVIL ENGINEERS  
MARCH 1953 SCALE 1"=50'



Approved this 15<sup>th</sup> day of April, 1953  
W. H. Durbin  
City Engineer, City of Riverside



SCALE  
Horizontal 1"=30'  
Vertical 1"=5'

PROPERTY OF  
CITY OF RIVERSIDE  
CITY ENGINEERING DEPT.

PROPERTY OF  
CITY OF RIVERSIDE  
CITY ENGINEERING DEPT.

1119