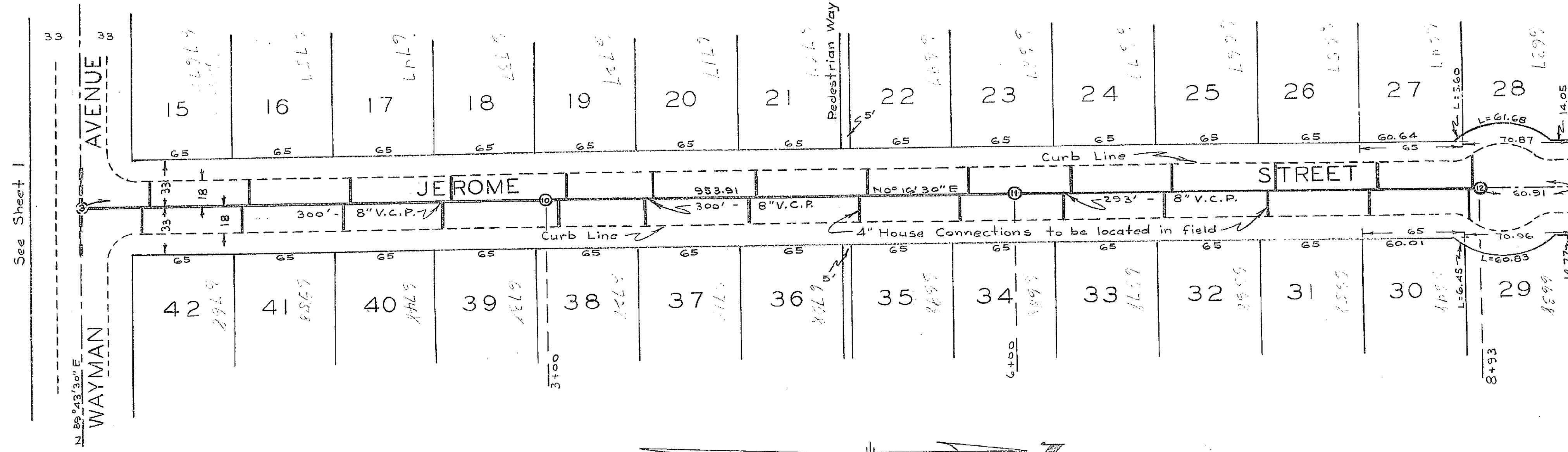


PROPERTY OF  
CITY OF RIVERSIDE  
CITY ENGINEERING DEPT.

PROPERTY OF  
CITY OF RIVERSIDE  
CITY ENGINEERING DEPT.

SEWER PLAN AND PROFILE  
OF  
JEROME STREET  
IN  
PHOENIX PLAZA

— BY —  
ALBERT A. WEBB ASSOCIATES  
CIVIL ENGINEERS MAY 1953

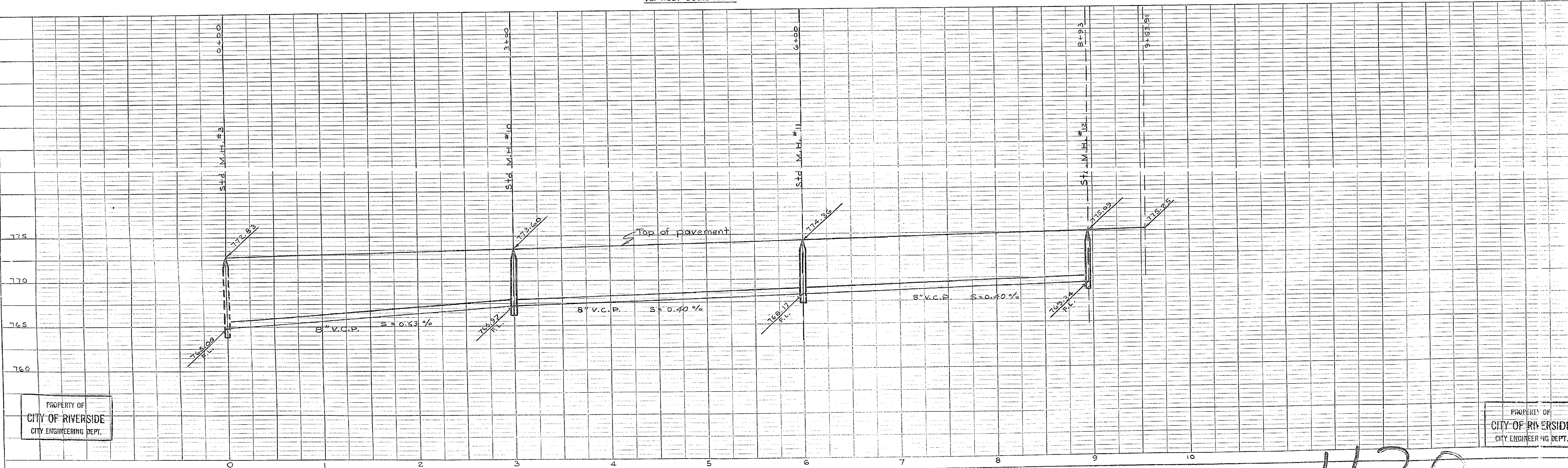


Scale - 1" = 50'

PROFILE  
Vertical Scale 1" = 5'

Approved this 26<sup>th</sup> day of June 1953.

*M. H. Irvine*  
City Engineer, City of Riverside



PROPERTY OF  
CITY OF RIVERSIDE  
CITY ENGINEERING DEPT.

PROPERTY OF  
CITY OF RIVERSIDE  
CITY ENGINEERING DEPT.

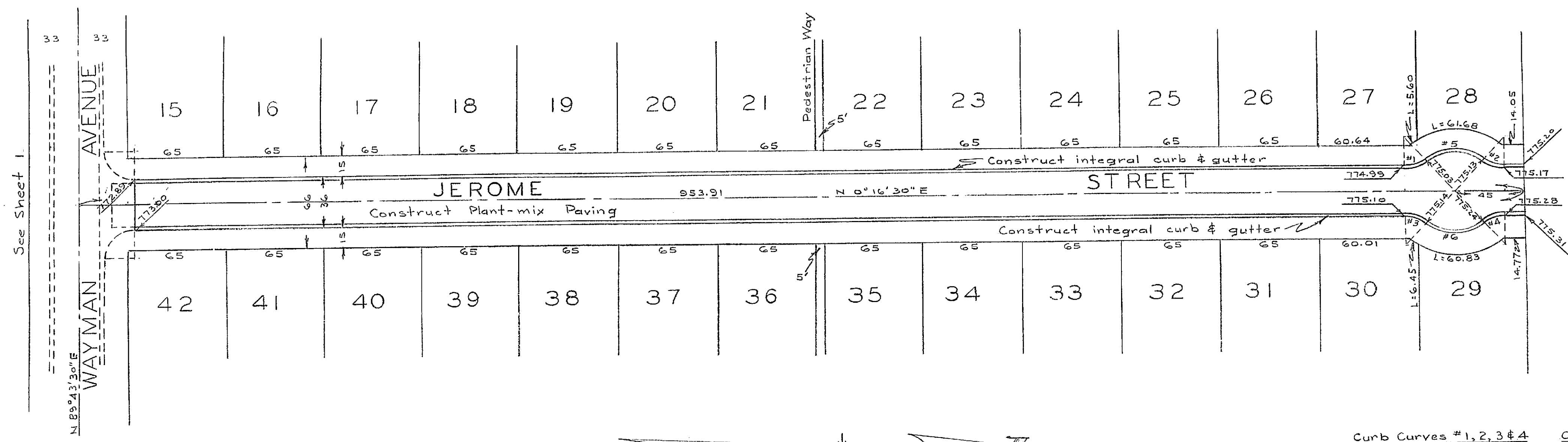
1120

PROPERTY OF  
CITY OF RIVERSIDE  
CITY ENGINEERING DEPT.

PROPERTY OF  
CITY OF RIVERSIDE  
CITY ENGINEERING DEPT.

STREET PLAN AND PROFILE  
OF  
JEROME STREET  
IN  
PHOENIX PLAZA

— BY —  
ALBERT A. WEBB ASSOCIATES  
CIVIL ENGINEERS MAY 1953



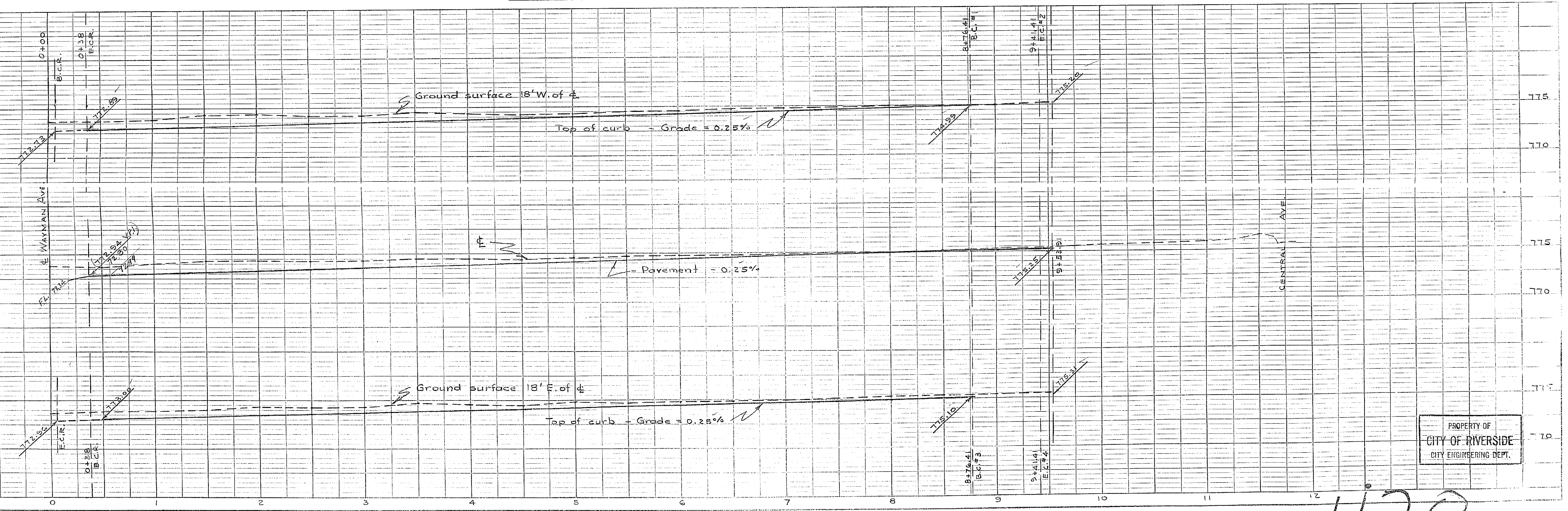
Scale - 1" = 50'

PROFILE  
Vertical Scale 1" = 5'

Curb Curves #1, 2, 3 & 4  
 $\Delta = 40^\circ 32' 10''$   
 $R = 20'$   
 $T = 7.39'$   
 $L = 14.15'$

Curb Curves #5 & 6  
 $\Delta = 81^\circ 04' 20''$   
 $R = 30'$   
 $T = 25.66'$   
 $L = 42.45'$

Approved this 18<sup>th</sup> day of July 1953.  
*M. J. Irvine*  
 City Engineer, City of Riverside



PROPERTY OF  
CITY OF RIVERSIDE  
CITY ENGINEERING DEPT.

PROPERTY OF  
CITY OF RIVERSIDE  
CITY ENGINEERING DEPT.

1120



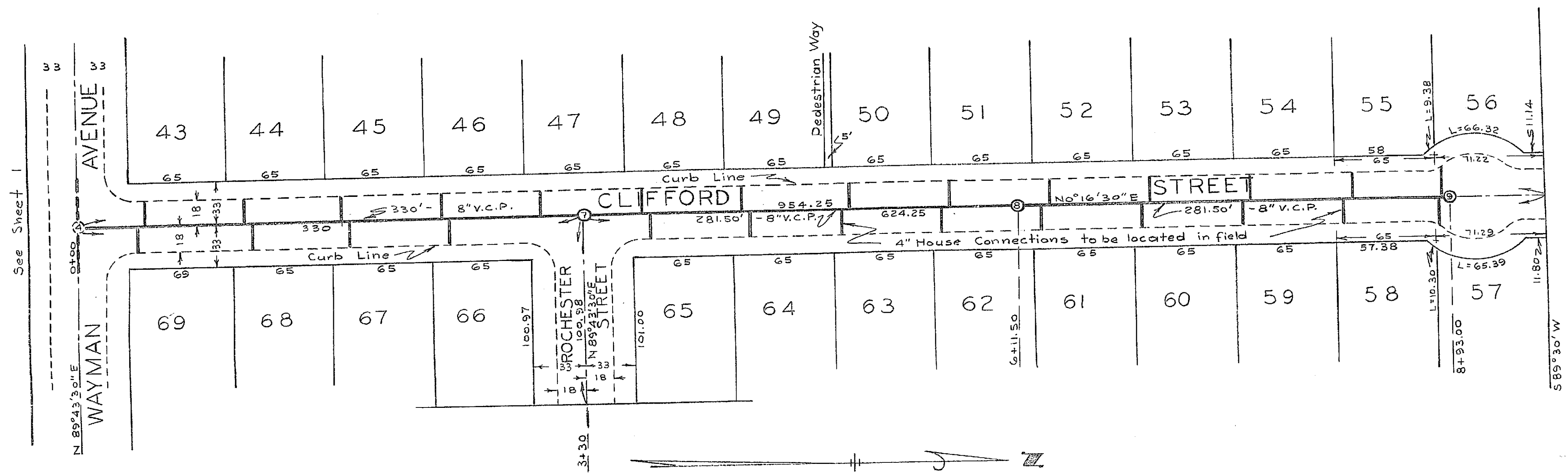
PROPERTY OF  
CITY OF RIVERSIDE  
CITY ENGINEERING DEPT.

PROPERTY OF  
CITY OF RIVERSIDE  
CITY ENGINEERING DEPT.

SEWER PLAN AND PROFILE  
OF  
CLIFFORD STREET  
IN  
PHOENIX PLAZA

— BY —  
ALBERT A. WEBB ASSOCIATES  
CIVIL ENGINEERS MAY 1953

PLAN  
SURVEYED BY: [ ]  
NOTE BOOK NO. [ ]  
ET. OF 7/11/53  
NO. 218

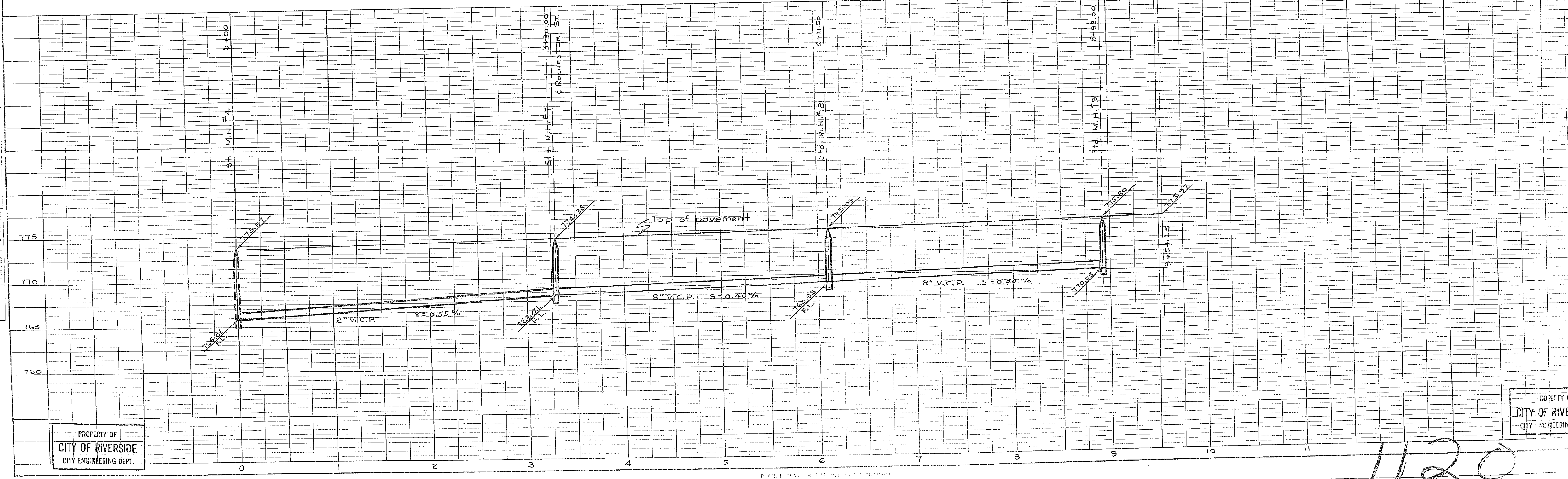


PROFILE  
Vertical Scale 1" = 5'

Approved this 26th day of June 1953.

*M. J. Swine*  
City Engineer, City of Riverside

PROFILE  
SURVEYED BY: [ ]  
NOTE BOOK NO. [ ]  
ET. OF 7/11/53  
NO. 218



PROPERTY OF  
CITY OF RIVERSIDE  
CITY ENGINEERING DEPT.

PROPERTY OF  
CITY OF RIVERSIDE  
CITY ENGINEERING DEPT.

1120

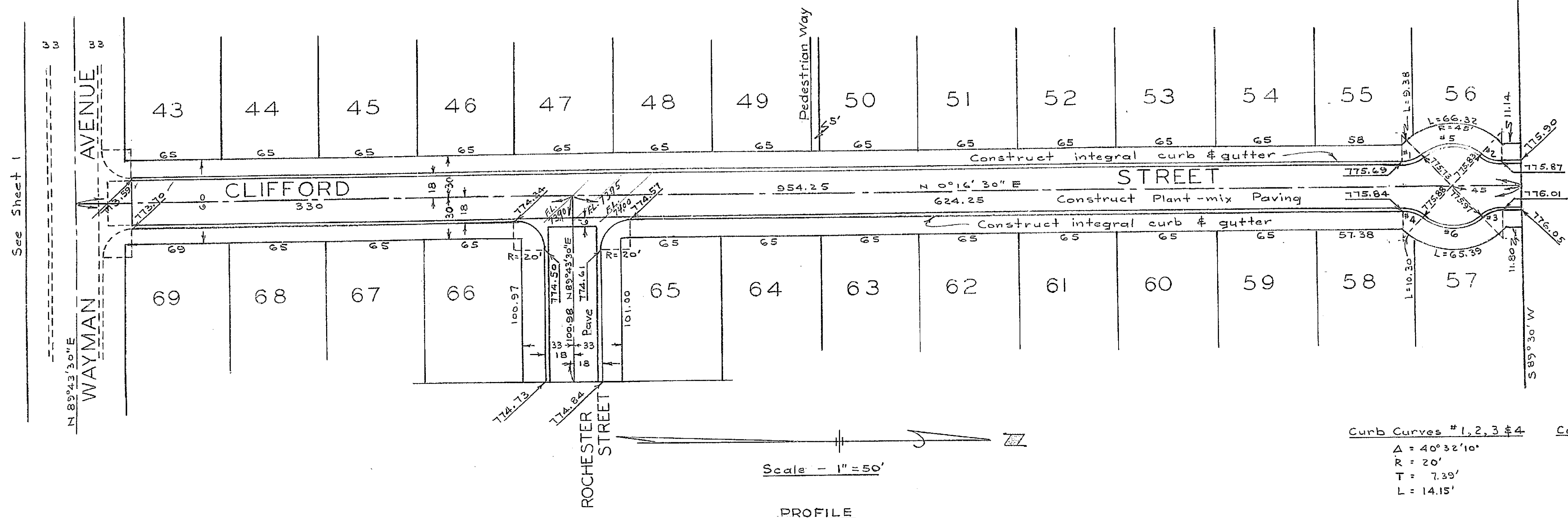


PROPERTY OF  
CITY OF RIVERSIDE  
CITY ENGINEERING DEPT.

PROPERTY OF  
CITY OF RIVERSIDE  
CITY ENGINEERING DEPT.

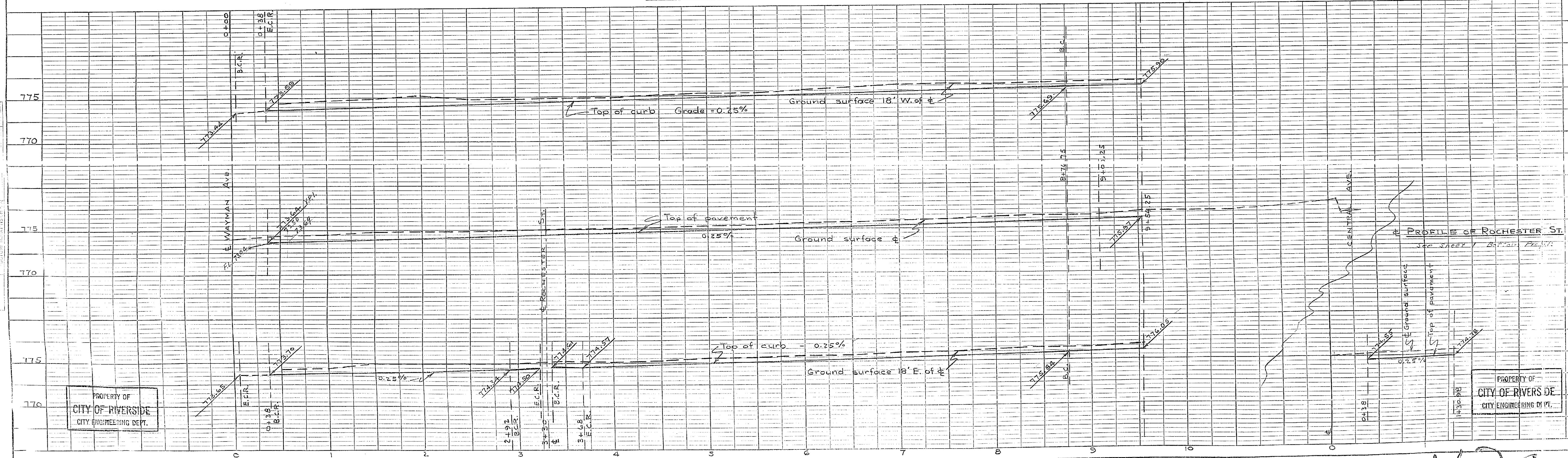
STREET PLAN AND PROFILE  
OF  
CLIFFORD AVENUE  
IN  
PHOENIX PLAZA

— BY —  
**ALBERT A. WEBB ASSOCIATES**  
CIVIL ENGINEERS MAY 1953



Approved this 13<sup>th</sup> day of July 1953.

*M. H. Gurnea*  
City Engineer, City of Riverside



1120

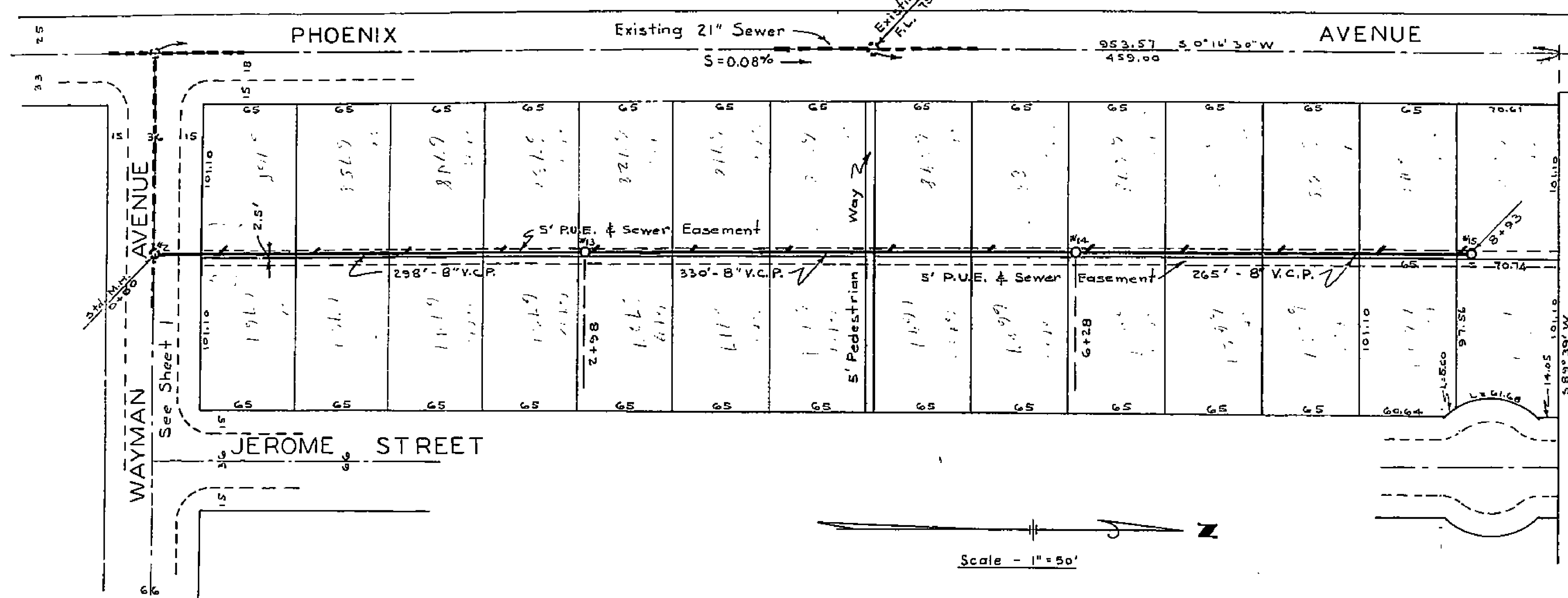
PROPERTY OF  
CITY OF RIVERSIDE  
CITY ENGINEERING DEPT.

PROPERTY OF  
CITY OF RIVERSIDE  
CITY ENGINEERING DEPT.

# SEWER PLAN AND PROFILE EAST OF PHOENIX AVENUE IN PHOENIX PLAZA

— By —  
ALBERT A. WEBB ASSOCIATES  
CIVIL ENGINEERS MAY 1953

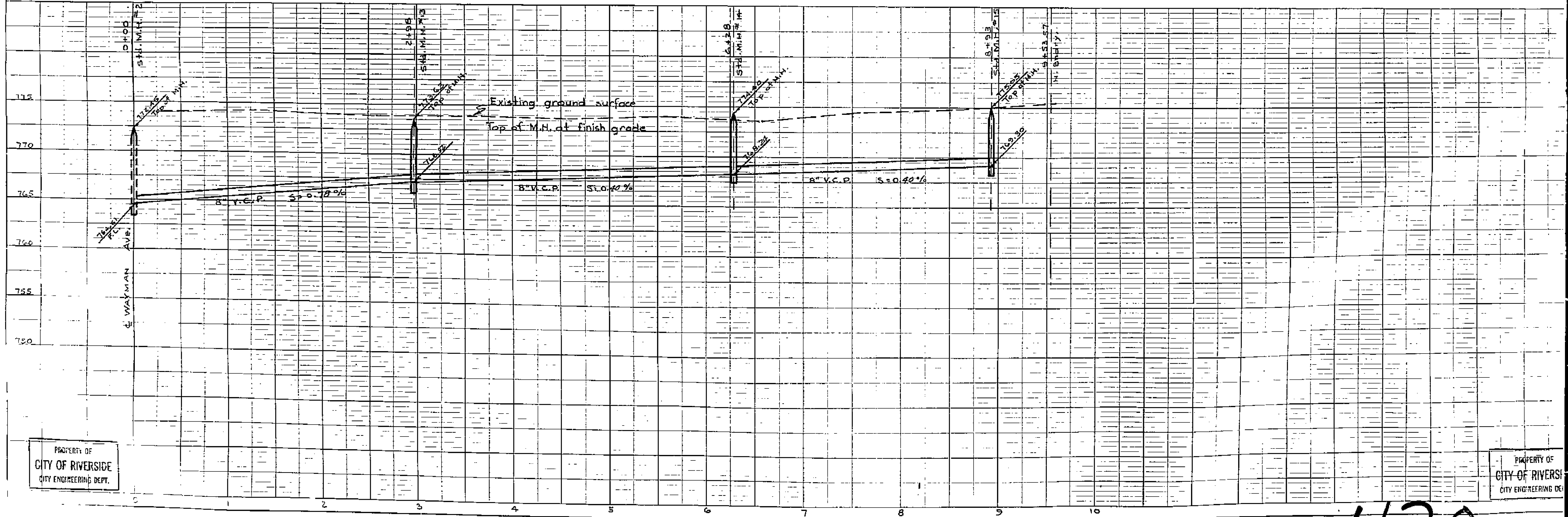
PLAN  
No. 218



Approved this 26<sup>th</sup> day of June 1953.

*W. J. Davis*  
City Engineer, City of Riverside

PROFILE  
Vertical Scale 1" = 5'



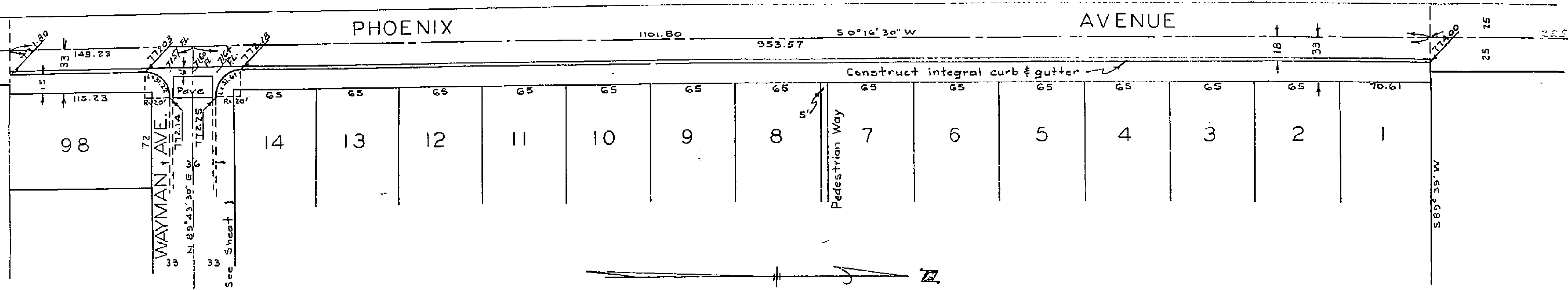
PROPERTY OF  
CITY OF RIVERSIDE  
CITY ENGINEERING DEPT.

PROPERTY OF  
CITY OF RIVERSIDE  
CITY ENGINEERING DEPT.

1120

PHOENIX AVENUE  
IN  
PHOENIX PLAZA

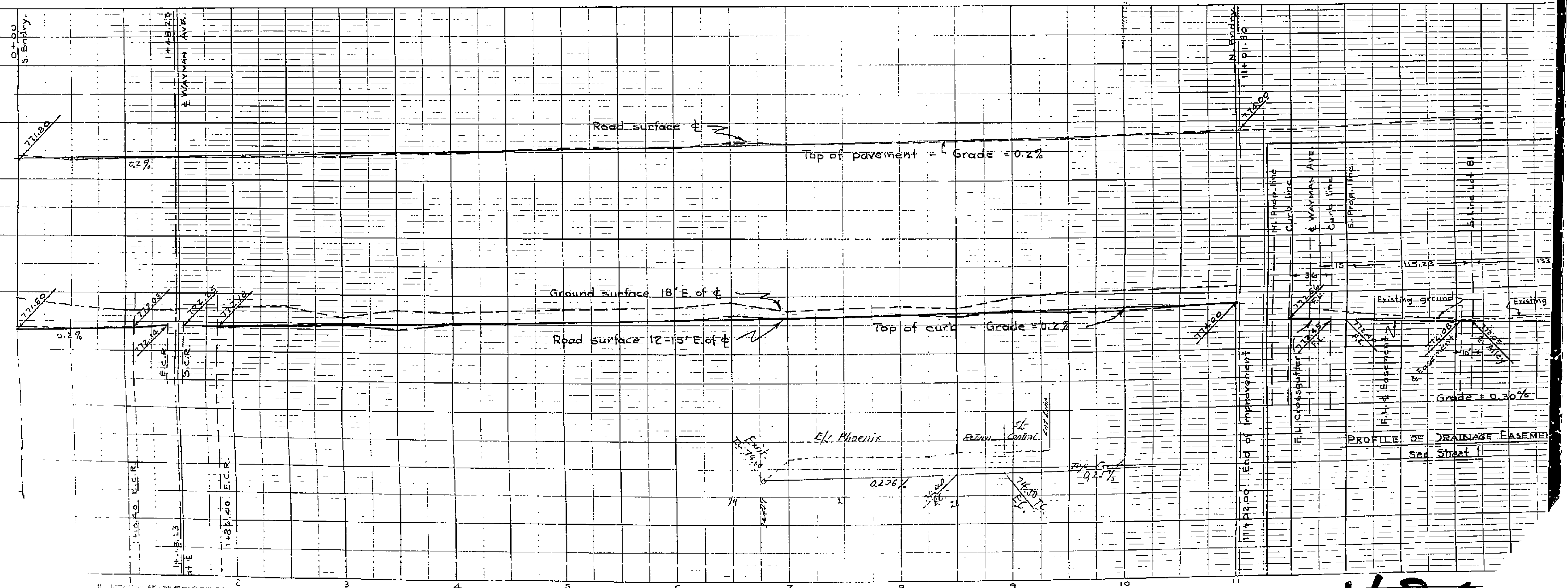
— BY —  
ALBERT A. WEBB ASSOCIATES  
CIVIL ENGINEERS MAY 1953



Scale - 1" = 50'

PROFILE  
Vertical Scale 1" = 5'

Approved this 17 day of  
M. H. [Signature]  
City Engineer, Cit



1125

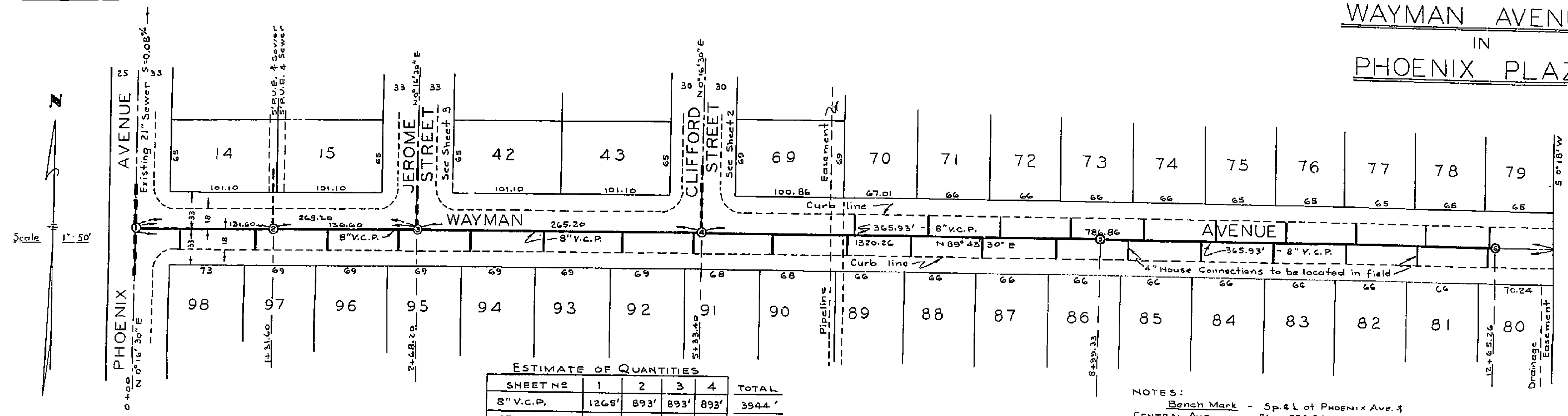


SEWER PLAN AND PROFILE  
OF  
**WAYMAN AVENUE**  
IN  
**PHOENIX PLAZA**

PROPERTY OF  
CITY OF RIVERSIDE  
CITY ENGINEERING DEPT.

PROPERTY OF  
CITY OF RIVERSIDE  
CITY ENGINEERING DEPT.

— BY —  
**ALBERT A. WEBB ASSOCIATES**  
CIVIL ENGINEERS  
MAY 15, 1953



ESTIMATE OF QUANTITIES

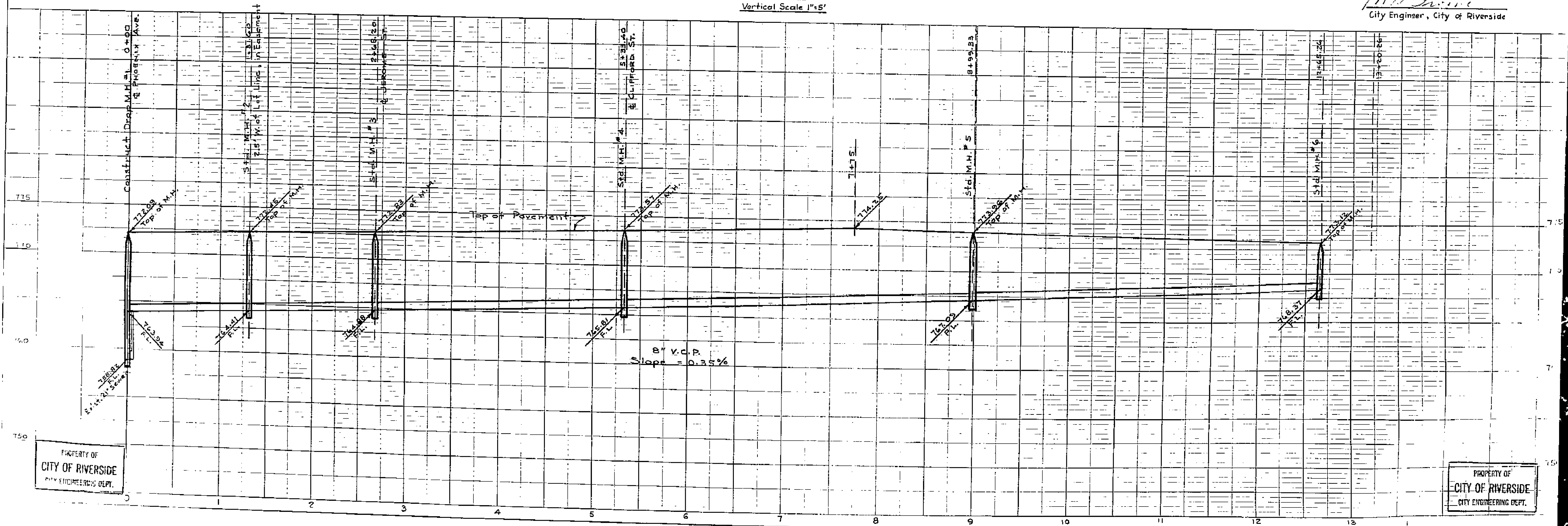
SHEET NO	1	2	3	4	TOTAL
8" V.C.P.	1265'	893'	893'	893'	3944'
STD. M.H.	5	3	3	3	14
DROP M.H.	1	-	-	-	1
HOUSE CONNECTIONS	29	27	28	14	98

NOTES:  
Bench Mark - Sp. & L of Phoenix Ave. & Central Ave. Elev. 774.94  
Construction to be in accordance with Plans and Specifications on file with the City Engineer, Riverside, California.

PROFILE  
Vertical Scale 1"=5'

Approved this 26<sup>th</sup> day of June 1953.

*W. J. ...*  
City Engineer, City of Riverside



PROPERTY OF  
CITY OF RIVERSIDE  
CITY ENGINEERING DEPT.

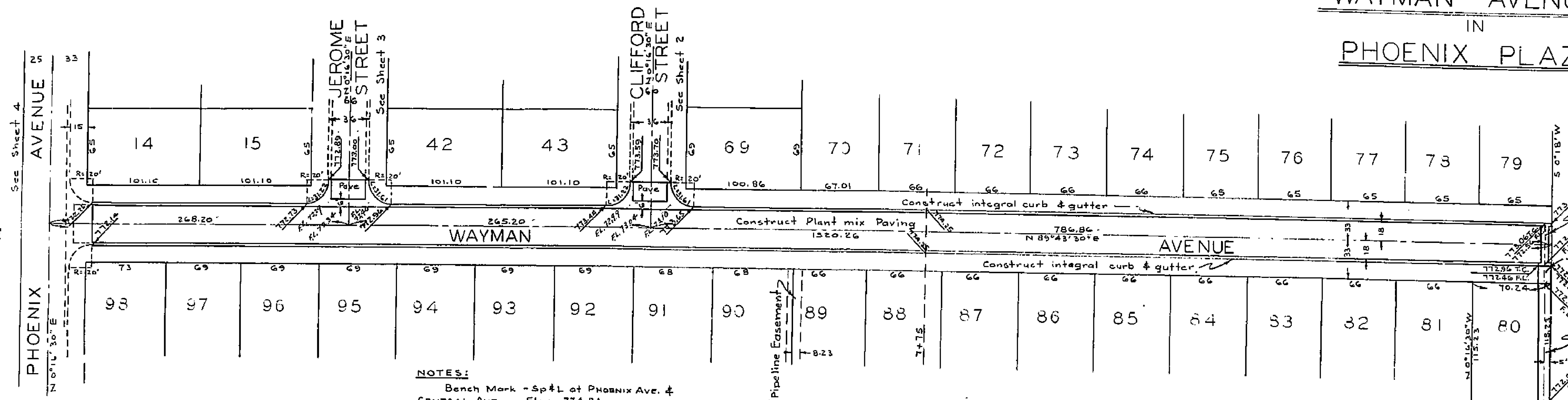
PROPERTY OF  
CITY OF RIVERSIDE  
CITY ENGINEERING DEPT.

1120

# STREET PLAN AND PROFILE OF WAYMAN AVENUE IN PHOENIX PLAZA

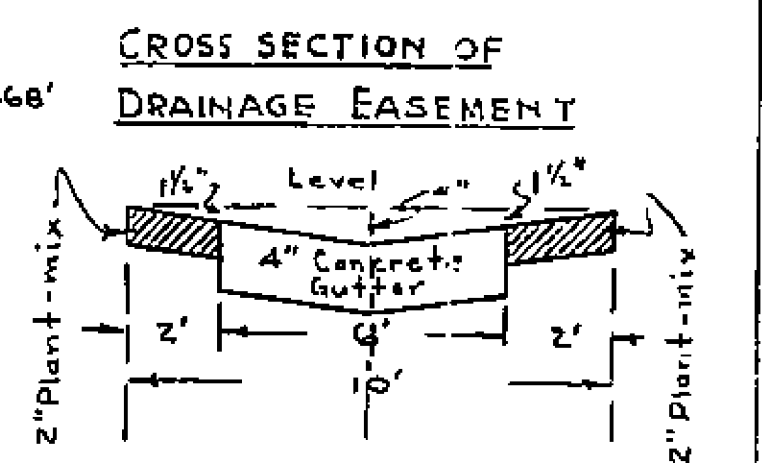
PROPERTY OF  
CITY OF RIVERSIDE  
CITY ENGINEERING DEPT.

— BY —  
ALBERT A. WEBB ASSOCIATES  
CIVIL ENGINEERS MAY 1953



**NOTES:**  
Bench Mark - Sp#L at Phoenix Ave. & Central Ave. Elev. 774.94  
Construction to be in accordance with Std. Plans and Specifications on file with the City Engineer, City of Riverside.  
Curb face to be 6" unless otherwise noted.  
Elevations at curb line are for top of curb unless otherwise noted.

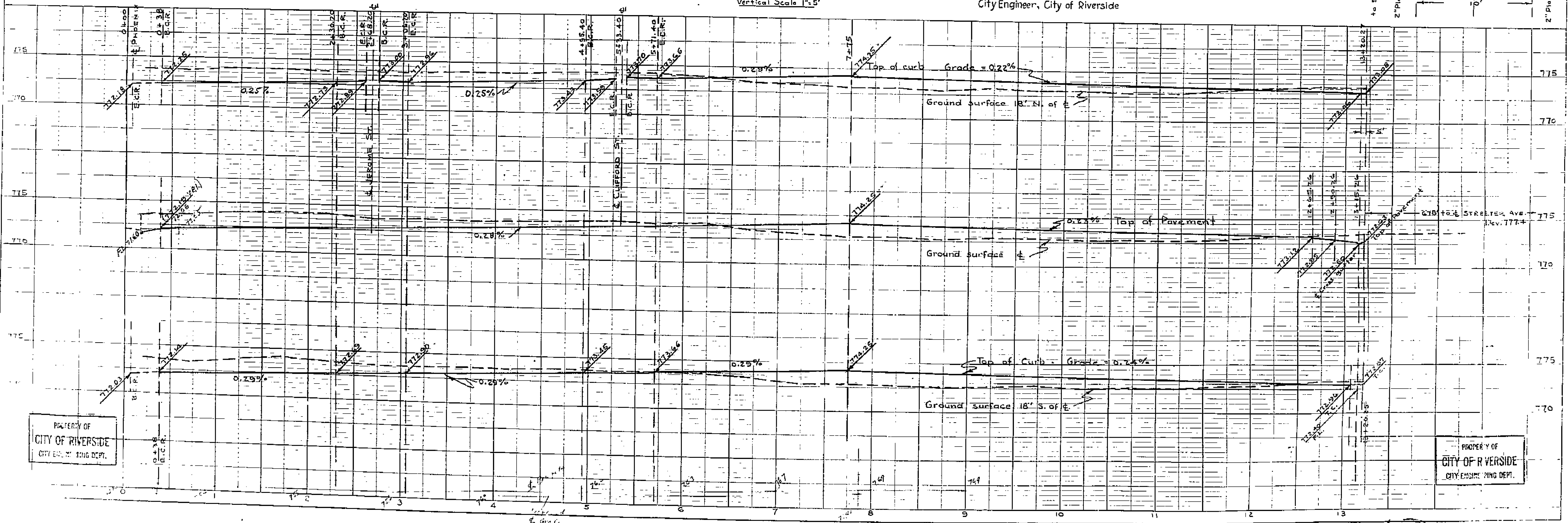
Std. C' Cross-gutter  
Warp easement surface between property line and curb to join gutter and top of curb at Std. Driveway Curb Depression.  
10' Drainage Easement Construct as below  
See Sheet 4 for Profile



Approved this 12 day of July 1953.

*Albert A. Webb*  
City Engineer, City of Riverside

**PROFILE**  
Vertical Scale 1" = 5'



PROPERTY OF  
CITY OF RIVERSIDE  
CITY ENGINEERING DEPT.

PROPERTY OF  
CITY OF RIVERSIDE  
CITY ENGINEERING DEPT.

1126