

SEE 1400 - P. 26

1121F

A & I.D. N<sup>o</sup> 2  
IN THE CITY OF RIVERSIDE

THE METROPOLITAN WATER DISTRICT  
OF SOUTHERN CALIFORNIA

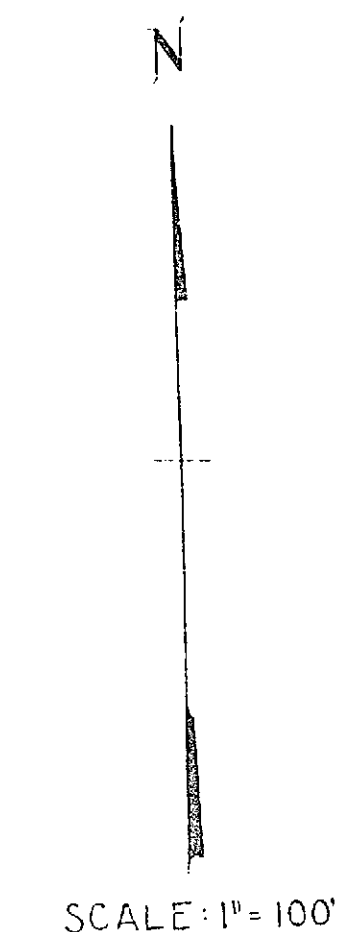
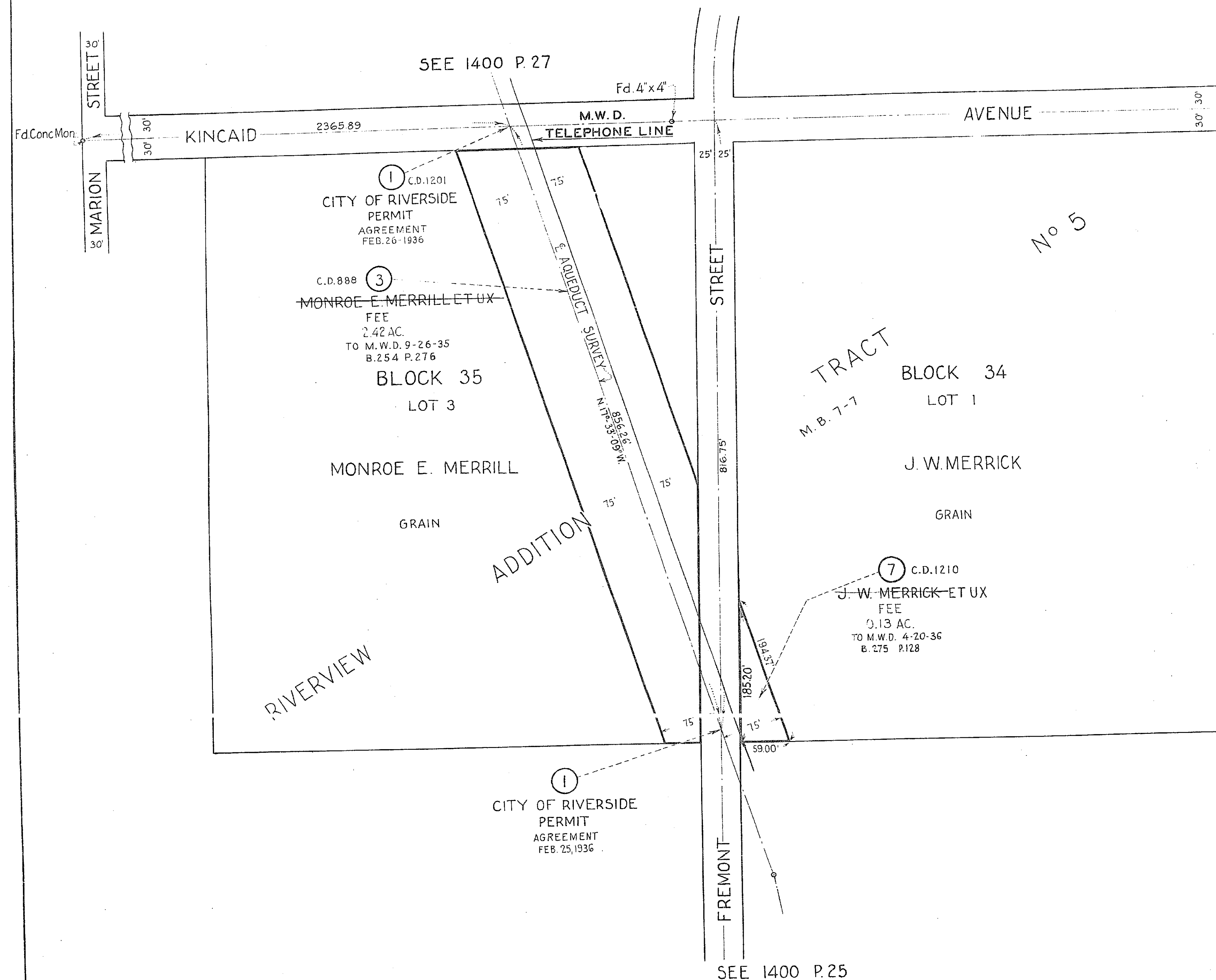
RIGHT OF WAY MAP  
DISTRIBUTION SYSTEM  
CAJALCO RESERVOIR TO SANTA ANA RIVER

DRAWN C.G.C. CHECKED C.G.C.  
TRACED A.B.B. RECALCULATED R.T. L.W.L.  
REVISED 5-13-35 8-35 FIG. 7-35 WRN-12-4-41

APPROVALS

ENGINEER *N.B. RBW* 4/15/35  
DESIGNER *RBW*  
SUPV. OF CONST. *RBW*  
CHIEF ENGINEER *RBW*

DATE APRIL 17, 1935 1400-27



1121F

A. & I. D. No 2  
CITY OF RIVERSIDE

THE METROPOLITAN WATER DISTRICT  
OF SOUTHERN CALIFORNIA

RIGHT OF WAY MAP  
DISTRIBUTION SYSTEM  
CAJALCO RESERVOIR TO SANTA ANA RIVER

DRAWN R.G.H. CHECKED L.W.I.  
TRACED R.A.P. REVISIONS 10-4-75 P.J.D. 7-8-36 WRH:JZ-A-47

APPROVALS

CONSULTING ENGINEER	R.G.H.	DATE	4/12/35
DESIGN ENGINEER	R.G.H.		
SUPT. OF CONSTRUCTION			
CITY ENGINEER	J. Merrick		

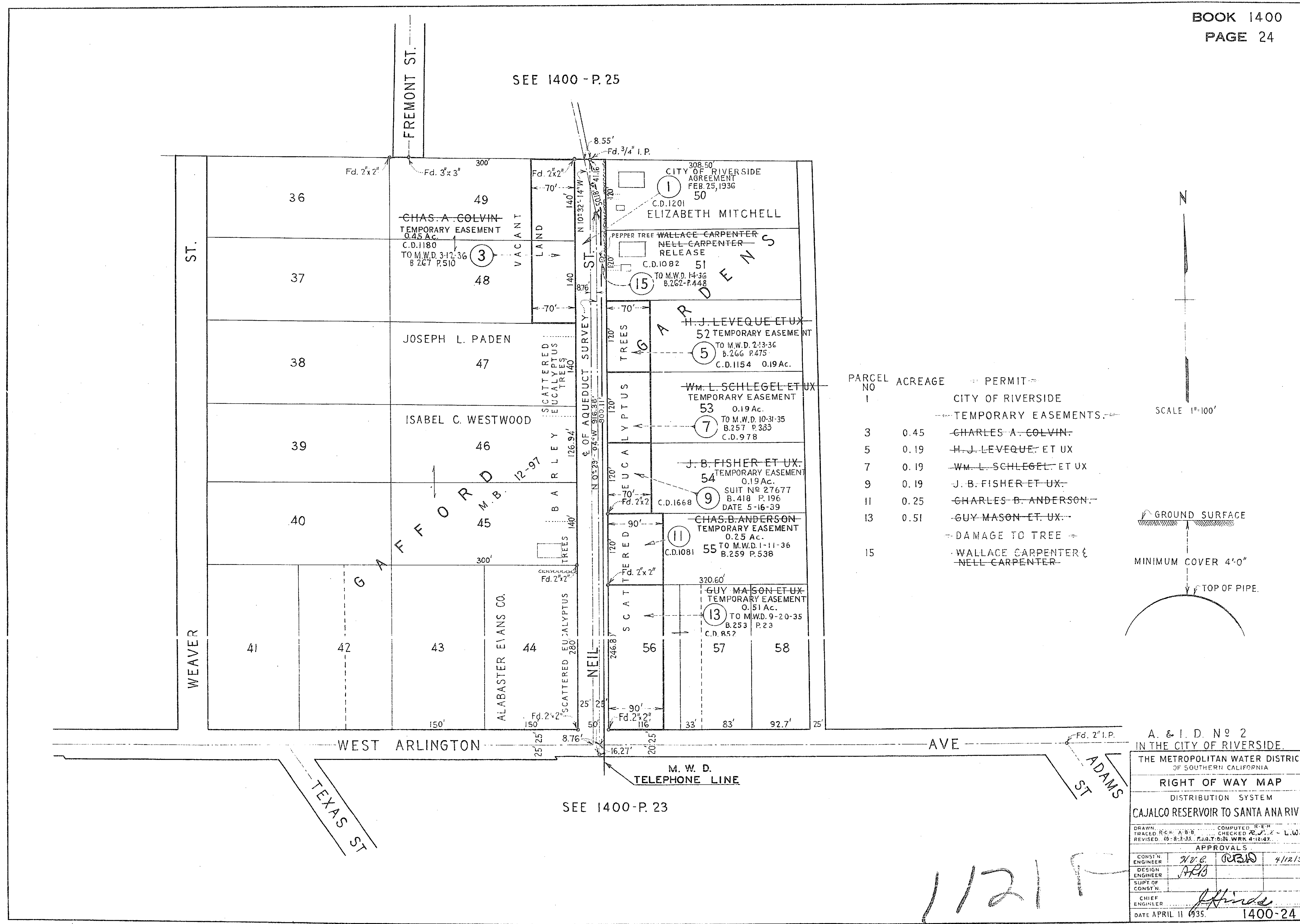
DATE APR. 11, 1935 1400-26



REVISID: G.M. 8-25-60	DRAWN R.H.		COMPUTED C.W.H.	
	TWO 1-8		CHECKED <i>W.H.</i>	
	REVISED 69-4-17 15 0-6-63		H.O. 7-8-36 <i>W.H.</i> 2-29-56	
APPROVALS				
CONST. ENGINEER	<i>W.H.</i>	<i>R.B.W.</i>	<i>4/12/55</i>	
DESIGN ENGINEER	<i>J.P.B.</i>			
SUPV OF CONST'N				
CHIEF ENGINEER	<i>W.H.</i>			
DATE APR 10, 1935		1400-25		

SEE 1400 - P. 24

SEE 1400 - P. 25



A. & I. D. No 2  
IN THE CITY OF RIVERSIDE  
THE METROPOLITAN WATER DISTRICT  
OF SOUTHERN CALIFORNIA  
**RIGHT OF WAY MAP**  
DISTRIBUTION SYSTEM  
CAJALCO RESERVOIR TO SANTA ANA RIVER

DRAWN: R.C.K. A-918  
TRACED: R.C.K. A-918  
REVIS: 8-8-35, 1-12-36, 4-12-47

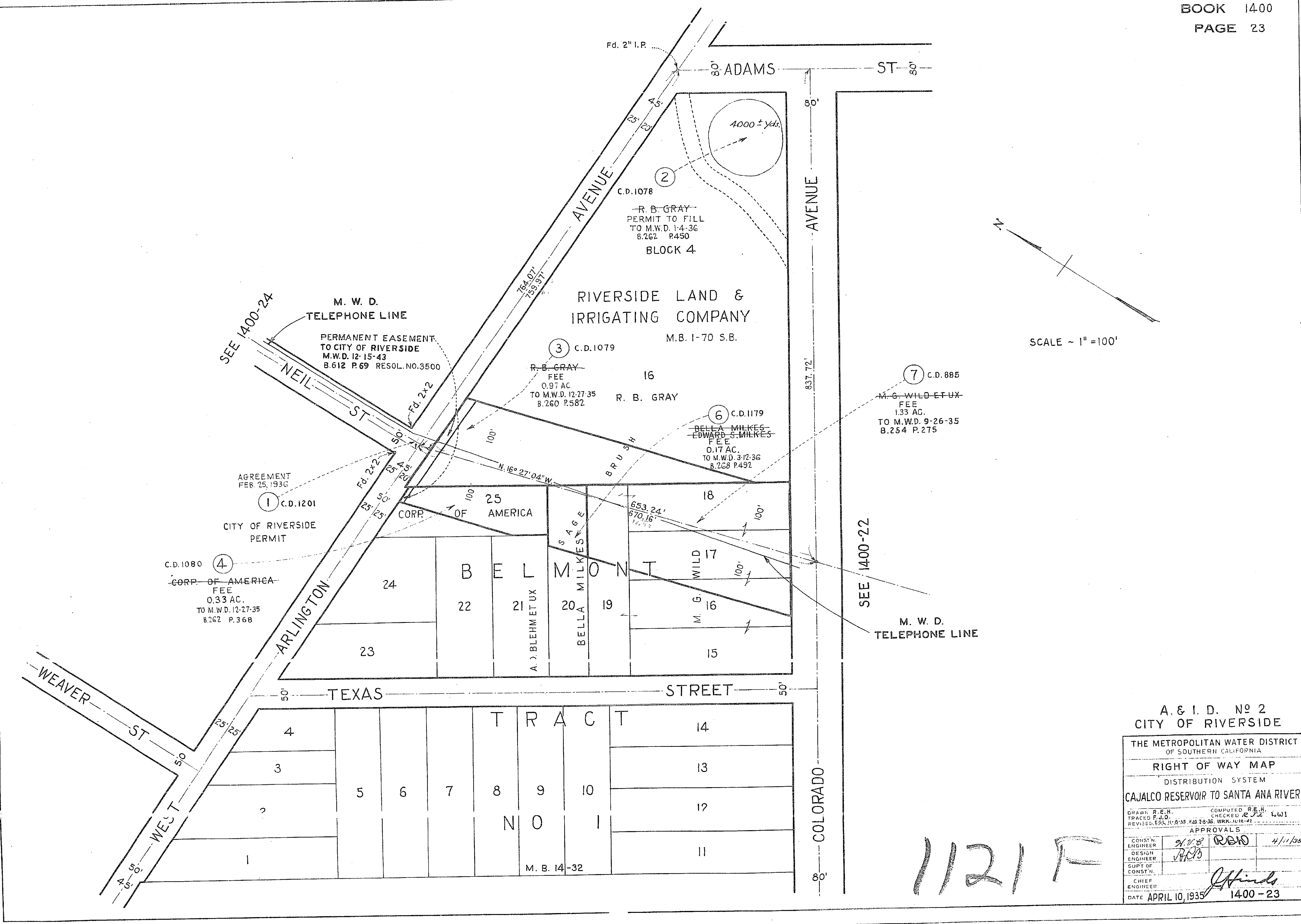
COMPUTED: R.E.H.  
CHECKED: R.E.H. L.W.I.

**APPROVALS**

CONSTR. ENGINEER	R.E.H.	4/12/35
DESIGN ENGINEER	R.E.H.	
SUPV. OF CONSTN.		
CHIEF ENGINEER	R.E.H.	

DATE APRIL 11 1935. 1400-24

11215



A. & I. D. No 2  
CITY OF RIVERSIDE

THE METROPOLITAN WATER DISTRICT  
OF SOUTHERN CALIFORNIA

RIGHT OF WAY MAP  
DISTRIBUTION SYSTEM  
CAJALCO RESERVOIR TO SANTA ANA RIVER

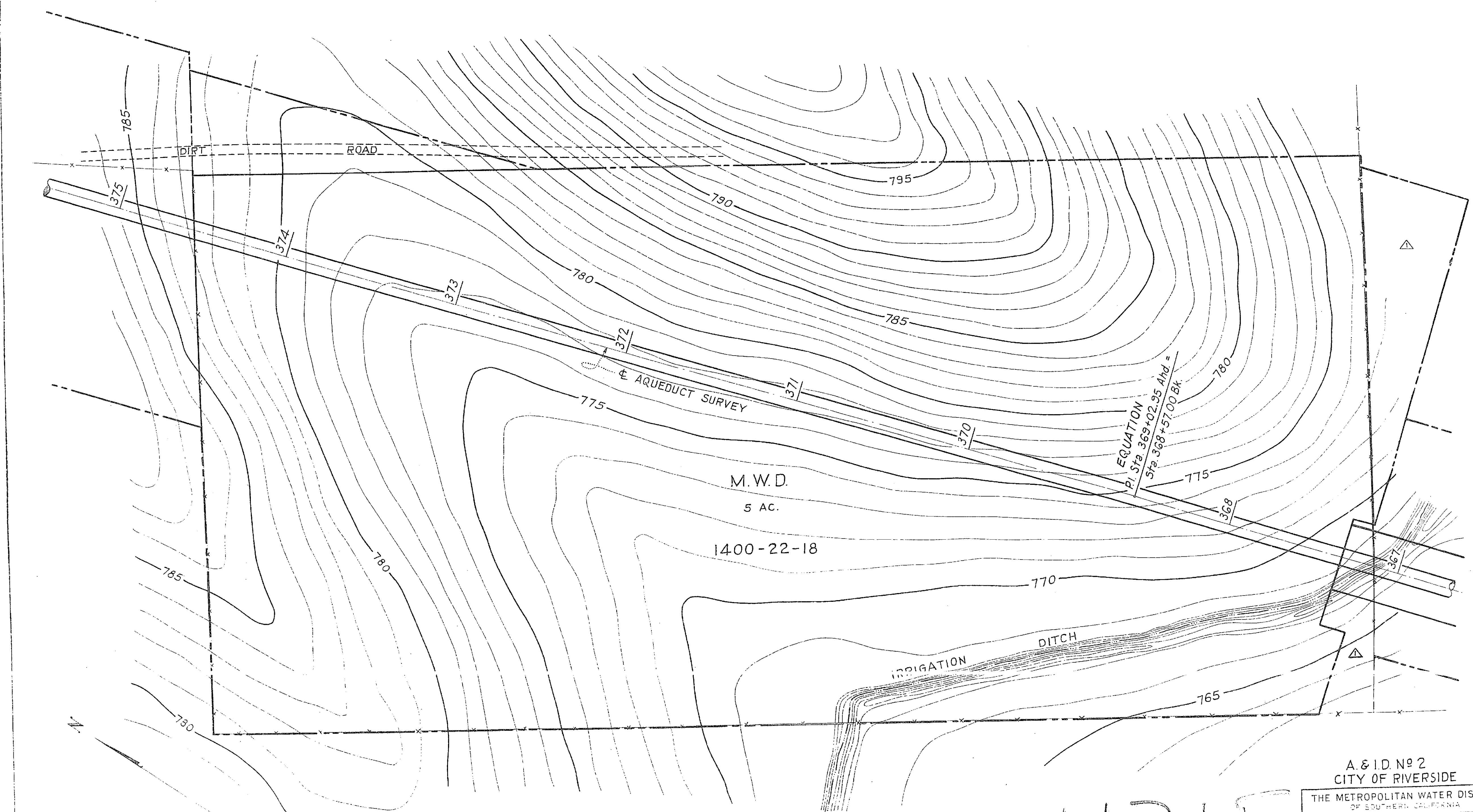
DRAWN: R.E.H. CHECKED: R.E.H. L.W.1  
TYPED: P.J.O. REVISED: 3/18/35, F.D. 12-36, W.R.K. 11-10-41

APPROVALS

CONSTN. ENGINEER	R.E.H.	R.E.H.	4/11/35
DESIGN ENGINEER	R.E.H.		
SUPT. OF CONSTN.			
CHIEF ENGINEER			

DATE: APRIL 10, 1935 1400-23





NOTE:  
FOR REVISION OF THIS PROPERTY  
SEE ATLAS SHEET 1400-22

1121F  
S.W. 1/4 5 AC. OF  
LOT 7 - BLOCK 7  
RIVERSIDE LAND & IRRIGATING CO.  
COUNTY OF RIVERSIDE  
M.B. 1 PAGE 70  
SAN BERNARDINO COUNTY RECORDS

A. & I.D. No 2  
CITY OF RIVERSIDE

THE METROPOLITAN WATER DISTRICT  
OF SOUTHERN CALIFORNIA

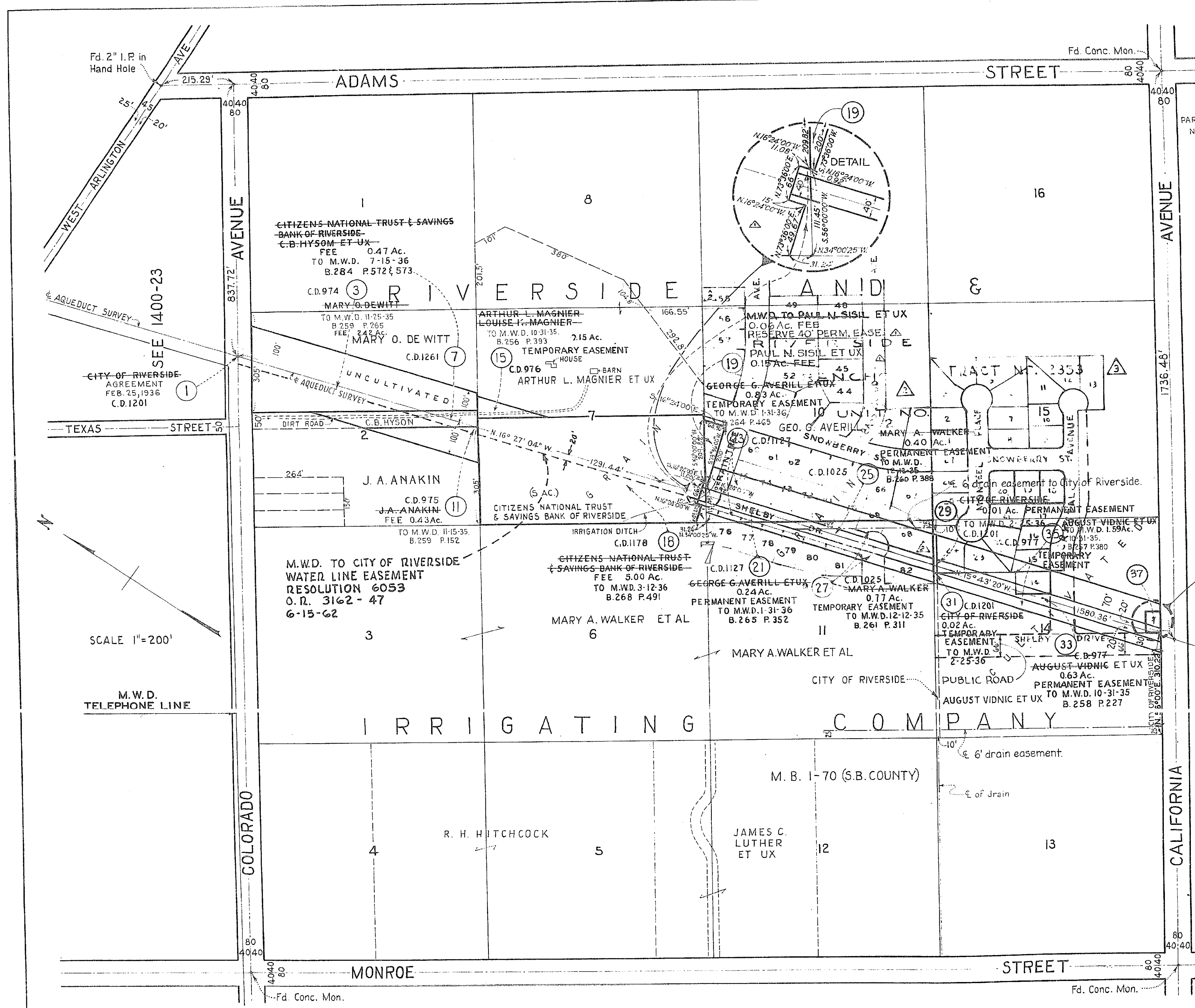
RIGHT OF WAY MAP  
DISTRIBUTION SYSTEM  
CAJALCO RESERVOIR TO SANTA ANA RIVER

DRAWN: F.J.O.  
CHECKED: J.M.W.  
REVISED: J.M.W. 2/24/36

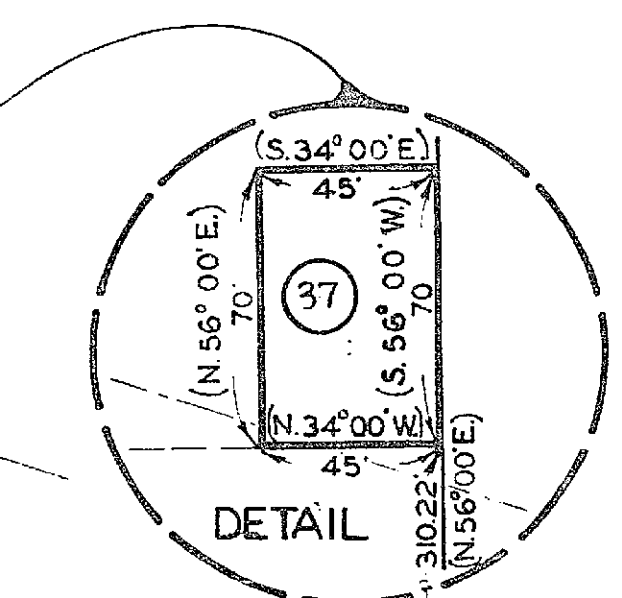
APPROVALS

ENGINEER: A.J.C.  
DESIGN: J.M.W.  
SURV: J.M.W.  
CATER: J.M.W.  
ENGINEER: J.M.W.

DATE: MARCH 13, 1936 1400-22 A



PARCEL NO.	ACREAGE	PERMIT-CITY OF RIVERSIDE		
1				
3	2.42	MARY O. DE WITT - M.W.D.	FEE	
7	0.47	G. B. HYSON & CITIZENS NATIONAL TRUST & SAVINGS BANK OF RIVERSIDE		
11	0.43	J. A. ANAKIN - M.W.D.	FEE	
15	0.15	ARTHUR L. MAGNIER ET UX	T	
18	5.00	CITIZENS NATIONAL TRUST & SAVINGS BANK OF RIVERSIDE	FEE	
	0.06	M.W.D. TO PAUL H. SISIL ET UX	FEE	
19	0.15	PAUL N. SISIL ET UX	FEE	
21	0.24	GEO. G. AVERILL ET UX	P	
23	0.83	GEO. G. AVERILL ET UX	T	
25	0.40	MARY A. WALKER	P	
27	0.77	MARY A. WALKER	T	
29	0.01	CITY OF RIVERSIDE	P	
31	0.02	CITY OF RIVERSIDE	T	
33	0.63	AUGUST VIDNIC ET UX	P	
35	1.59	AUGUST VIDNIC ET UX	T	
37	0.07	CITY OF RIVERSIDE	P	



11217

A & ID N°2  
CITY OF RIVERSIDE

THE METROPOLITAN WATER DISTRICT  
OF SOUTHERN CALIFORNIA

RIGHT OF WAY MAP  
DISTRIBUTION SYSTEM  
CAJALCO RESERVOIR TO SANTA ANA RIVER

REVISIONS:  
REVISED: D.S.W. 7-2-24  
REVISED: G.M. 7-27-59  
REVISED: G.M. 7-27-59  
REVISED: G.M. 7-27-59

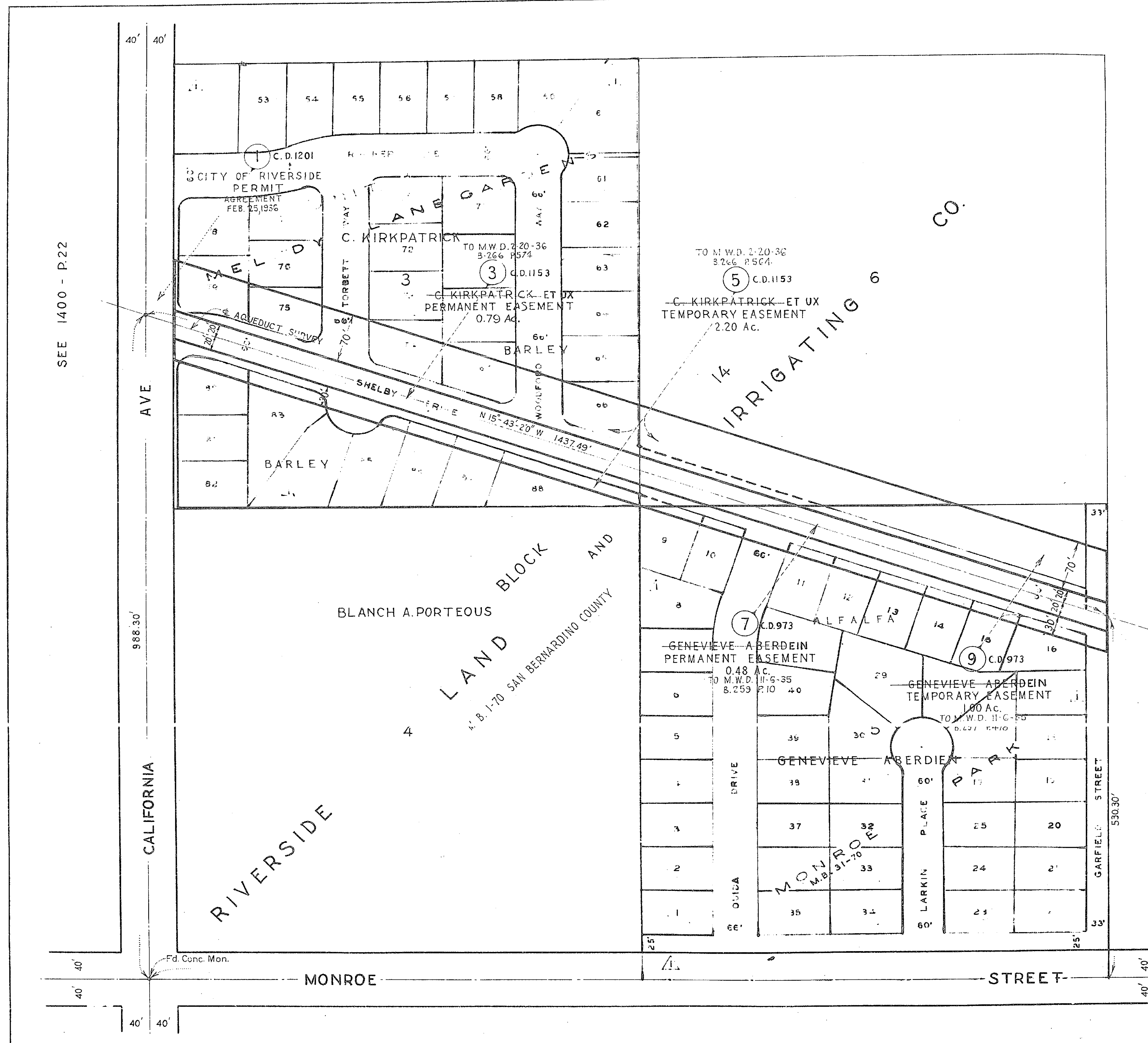
APPROVALS:  
CONSTN. ENGINEER: [Signature]  
DESIGN. ENGINEER: [Signature]  
SUPV. OF CONSTN.: [Signature]  
CHIEF ENGINEER: [Signature]

DATE: APRIL 9, 1935

1400-22



1121-F



SEE 1400 - P. 20

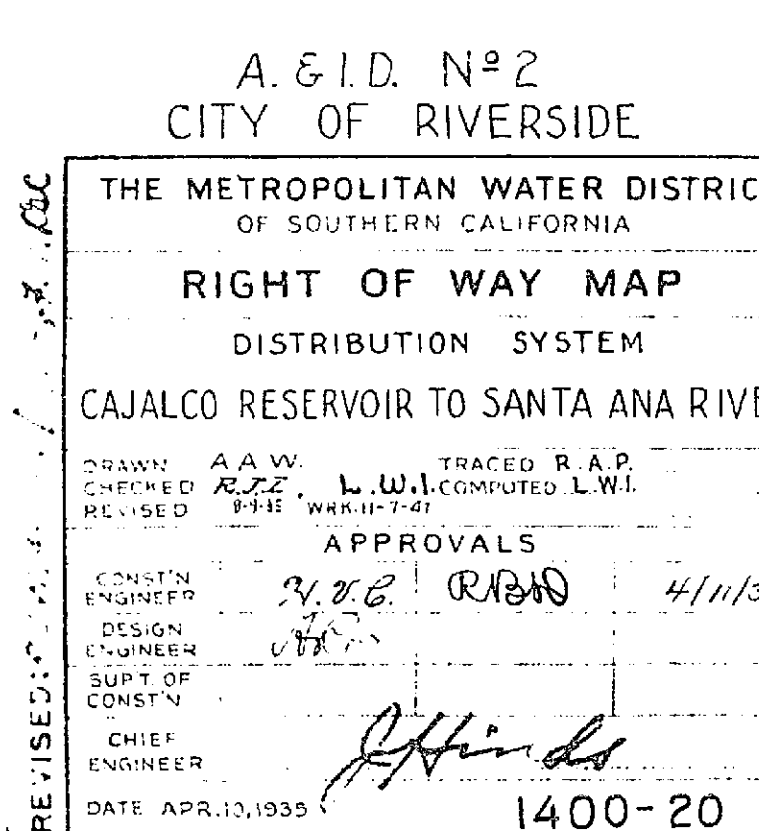
SCALE  
1" = 100'

1121 F

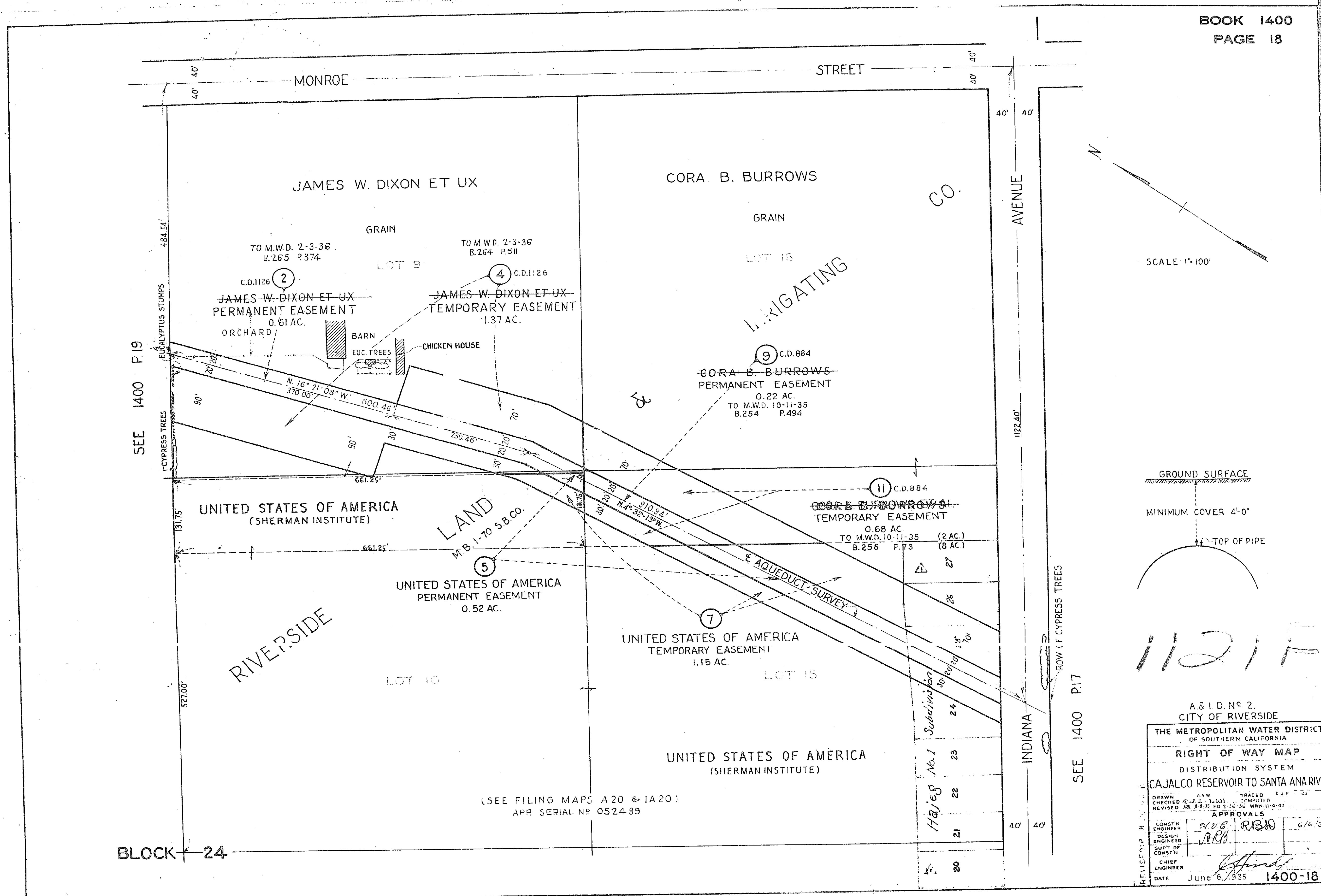
A. & I. D. No. 2  
CITY OF RIVERSIDE

THE METROPOLITAN WATER DISTRICT OF SOUTHERN CALIFORNIA			
RIGHT OF WAY MAP			
DISTRIBUTION SYSTEM			
CAJALCO RESERVOIR TO SANTA ANA RIVER			
DRAWN R.E.H.		COMPUTED L.M.A.	
TRACED R.C.K.		CHECKED R.E.H.	
REVISED 10-4-1935		10-6-37-38 W.M. 11-7-47	
APPROVALS			
CONST. ENGINEER	N.C.G.	R.B.W.	4/11/35
DESIGN ENGINEER	J.R.P.		
SUPV. OF CONST.			
CHIEF ENGINEER			
DATE APRIL 9, 1935		1400-21	

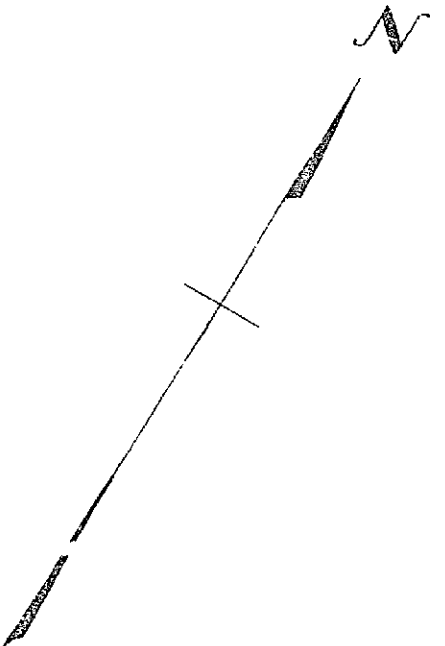
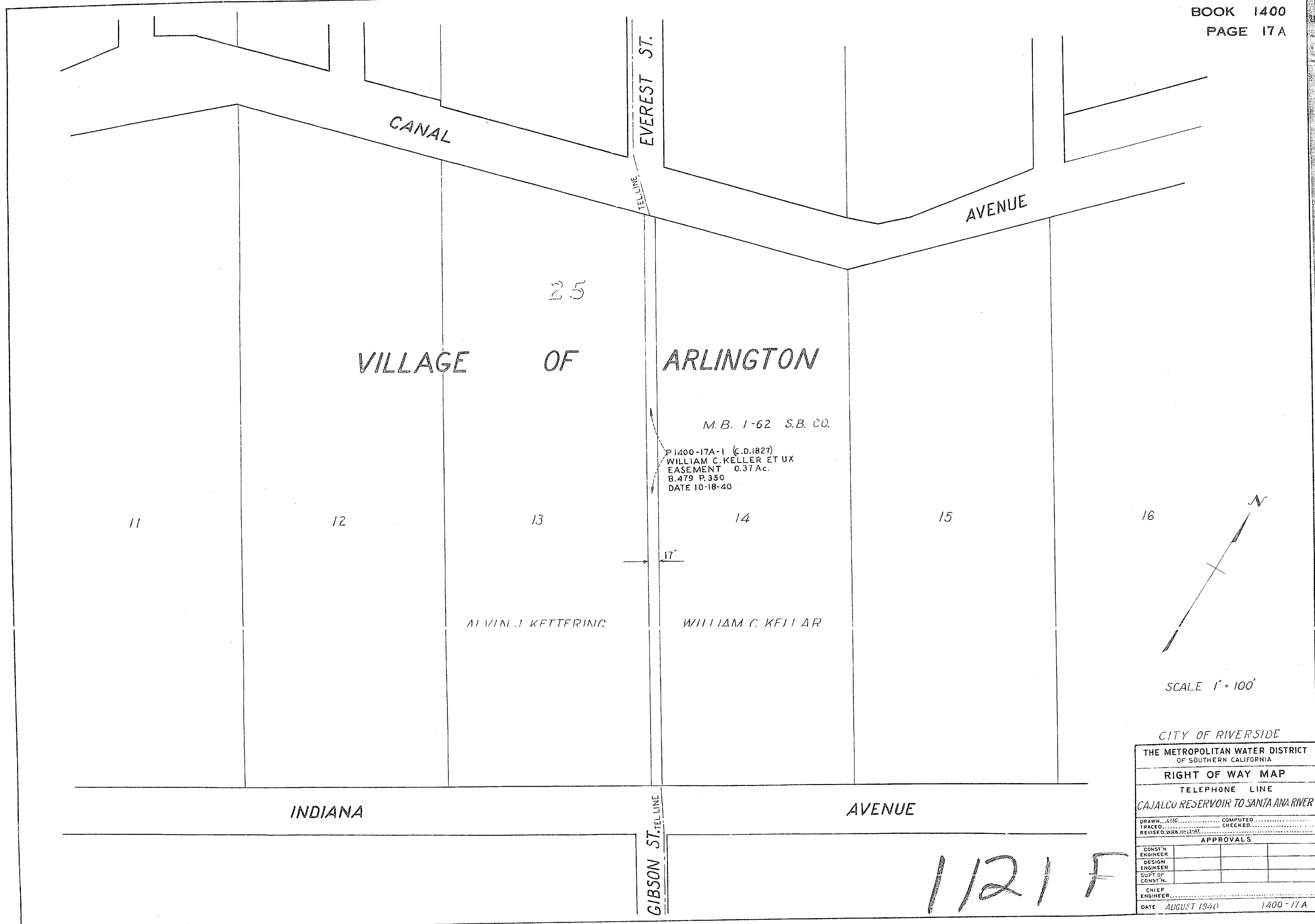




MISSING







SCALE 1" = 100'

CITY OF RIVERSIDE

THE METROPOLITAN WATER DISTRICT  
OF SOUTHERN CALIFORNIA

RIGHT OF WAY MAP

TELEPHONE LINE

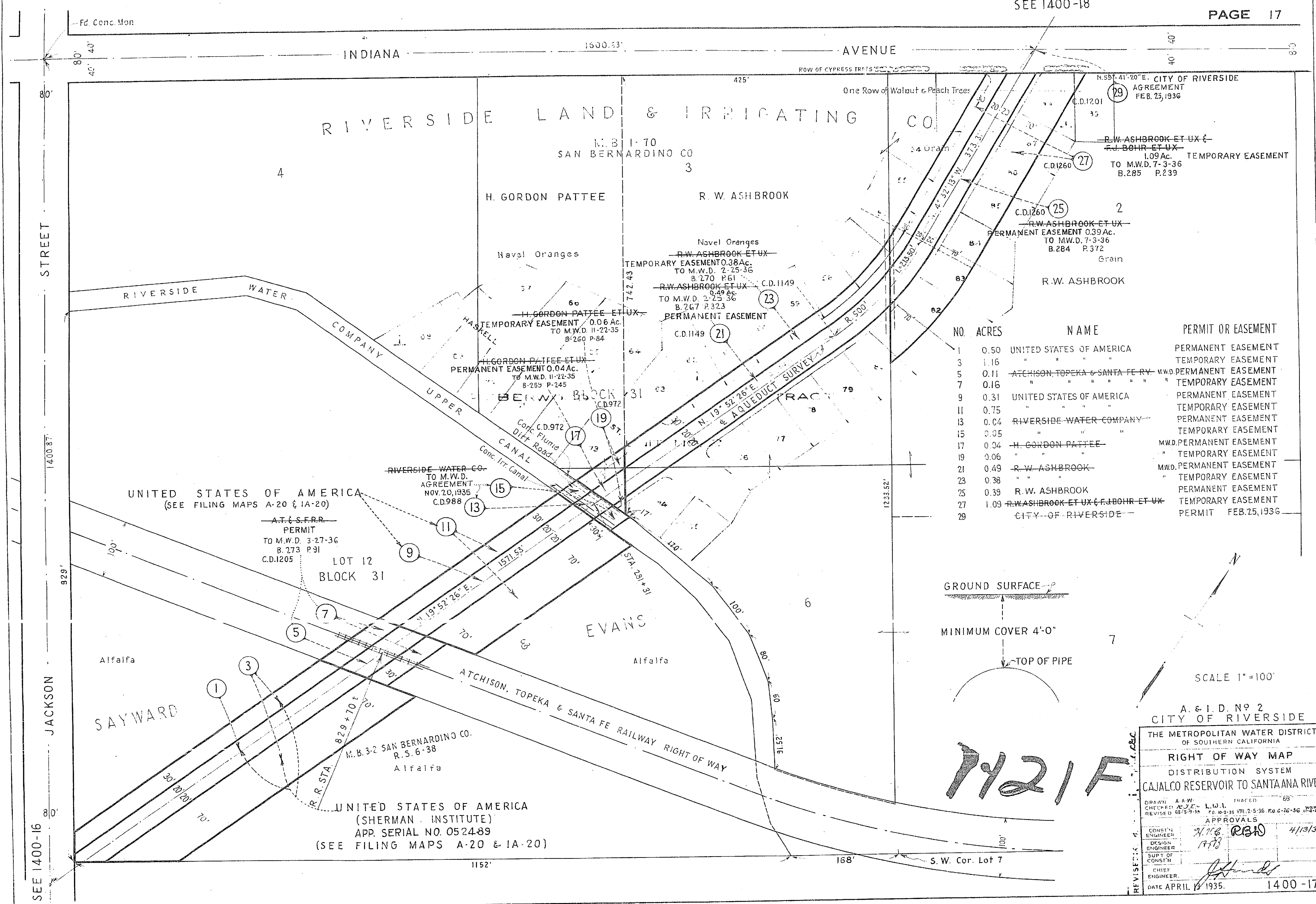
CAJALCO RESERVOIR TO SANTA ANA RIVER

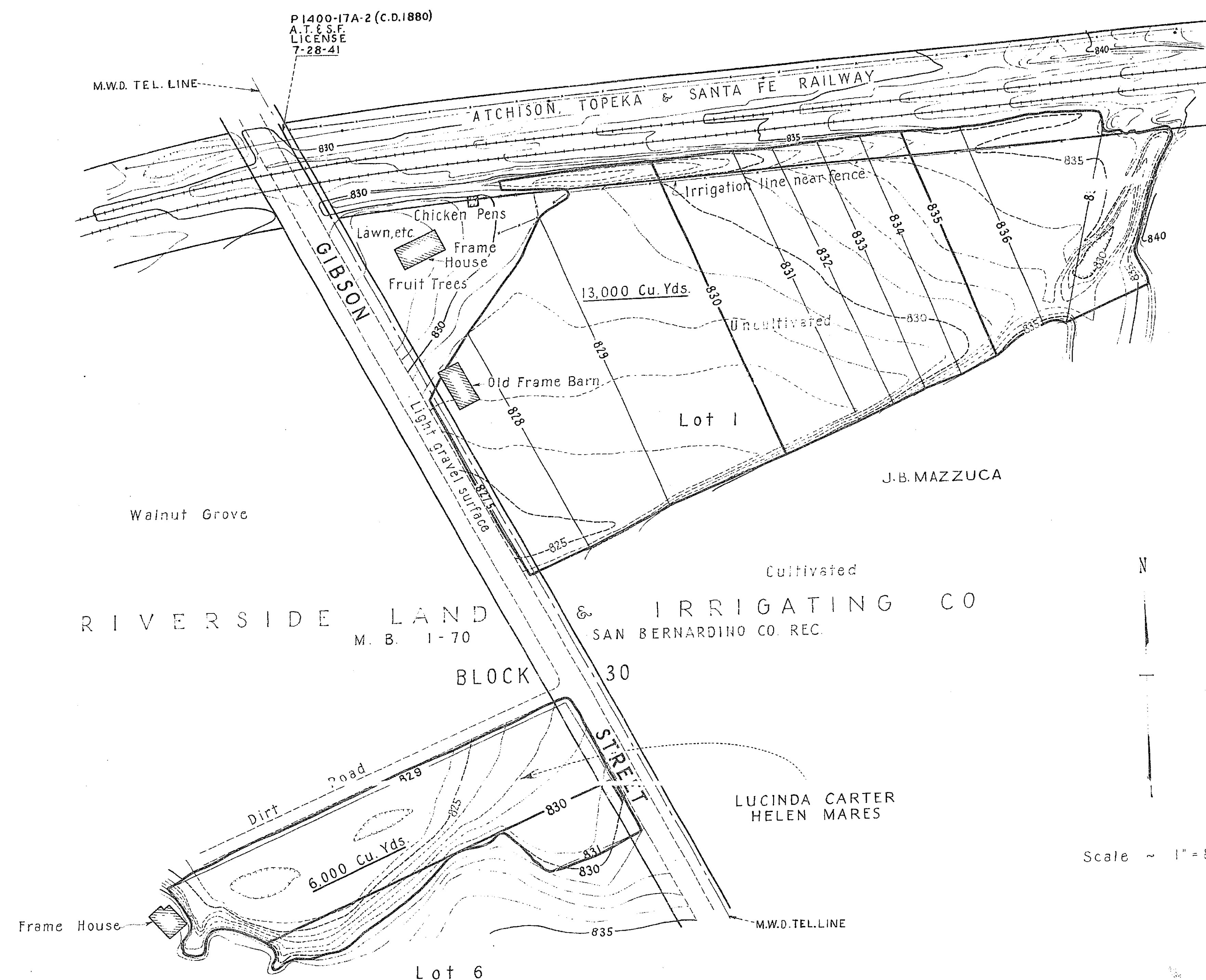
DRAWN.....	COMPUTED.....
TRACED.....	CHECKED.....
REVISED.....	DATE.....

APPROVALS

CONST'N ENGINEER			
DESIGN ENGINEER			
SUP'T OF CONST'N			
CHIEF ENGINEER			

DATE AUGUST 1940 1400-17A



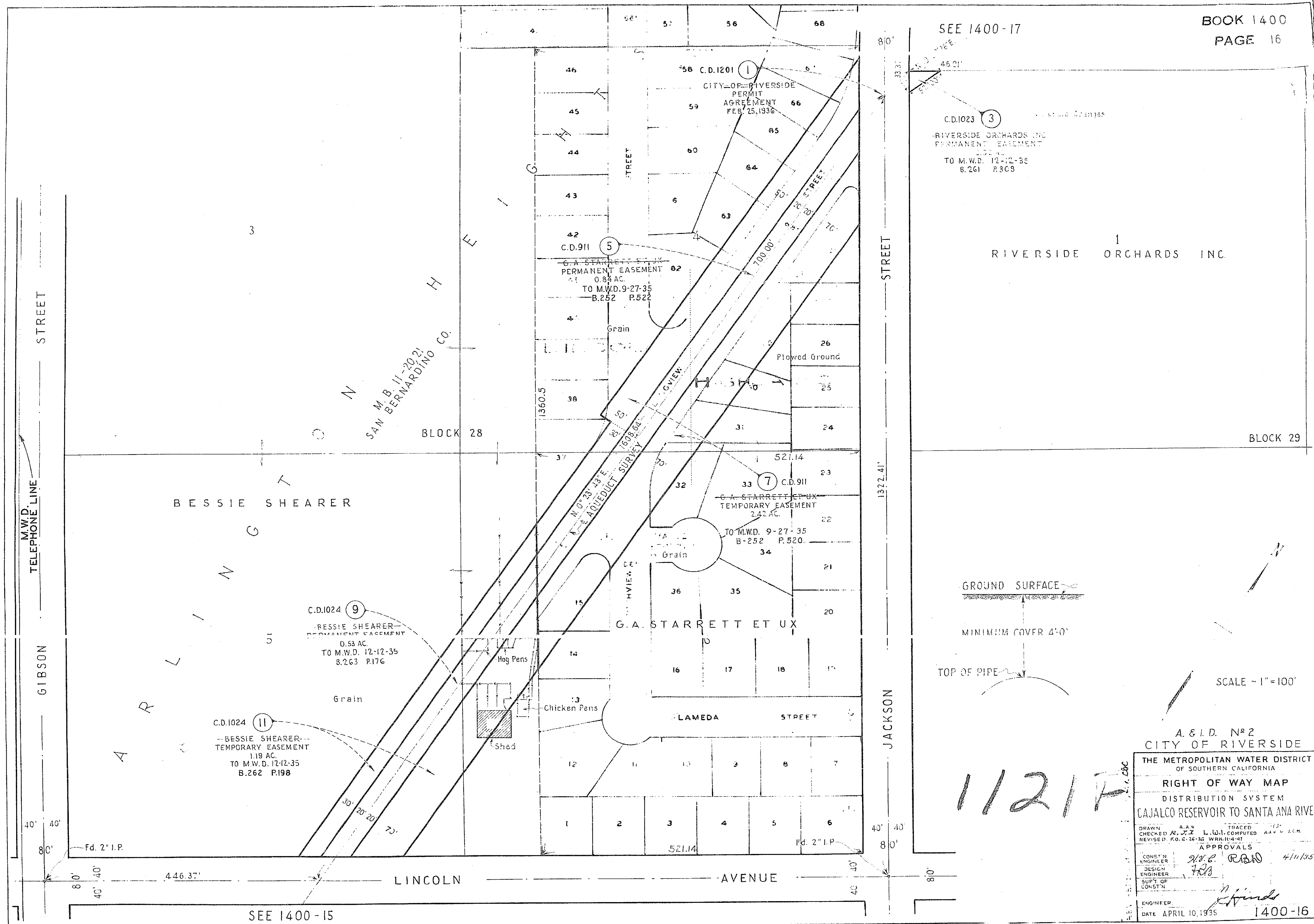


Scale ~ 1" = 80'

CITY OF RIVERSIDE		
THE METROPOLITAN WATER DISTRICT OF SOUTHERN CALIFORNIA		
RIGHT OF WAY MAP		
DISTRIBUTION SYSTEM CAJALCO RESERVOIR TO SANTA ANA RIVER		
DRAWN	COMPUTED	
TRACED	CHECKED	
REVISED	BY	DATE
APPROVALS		
CONST. ENGINEER	H.C. R.B.D.	9/12/35
DESIGN ENGINEER	H.C.	
SUPT. OF CONST.		
CHIEF ENGINEER		
DATE		Sept. 5, 1935
		1400-16A

1121F





SEE 1400-17

BOOK 1400  
PAGE 16

C.D.1023 3  
RIVERSIDE ORCHARDS INC.  
PERMANENT EASEMENT  
TO M.W.D. 12-12-35  
B.261 P.303

1  
RIVERSIDE ORCHARDS INC.

BLOCK 29

BESSIE SHEARER

C.D.1024 9  
BESSIE SHEARER  
PERMANENT EASEMENT  
0.53 AC.  
TO M.W.D. 12-12-35  
B.263 P.176

C.D.1024 11  
BESSIE SHEARER  
TEMPORARY EASEMENT  
1.19 AC.  
TO M.W.D. 12-12-35  
B.262 P.198

G.A. STARRETT ET UX  
PERMANENT EASEMENT  
0.84 AC.  
TO M.W.D. 9-27-35  
B.252 P.522

G.A. STARRETT ET UX  
TEMPORARY EASEMENT  
2.42 AC.  
TO M.W.D. 9-27-35  
B.252 P.520

G.A. STARRETT ET UX

LAMEDA STREET

LINCOLN AVENUE

JACKSON STREET

GROUND SURFACE

MINIMUM COVER 4'-0"

TOP OF PIPE

SCALE - 1"=100'

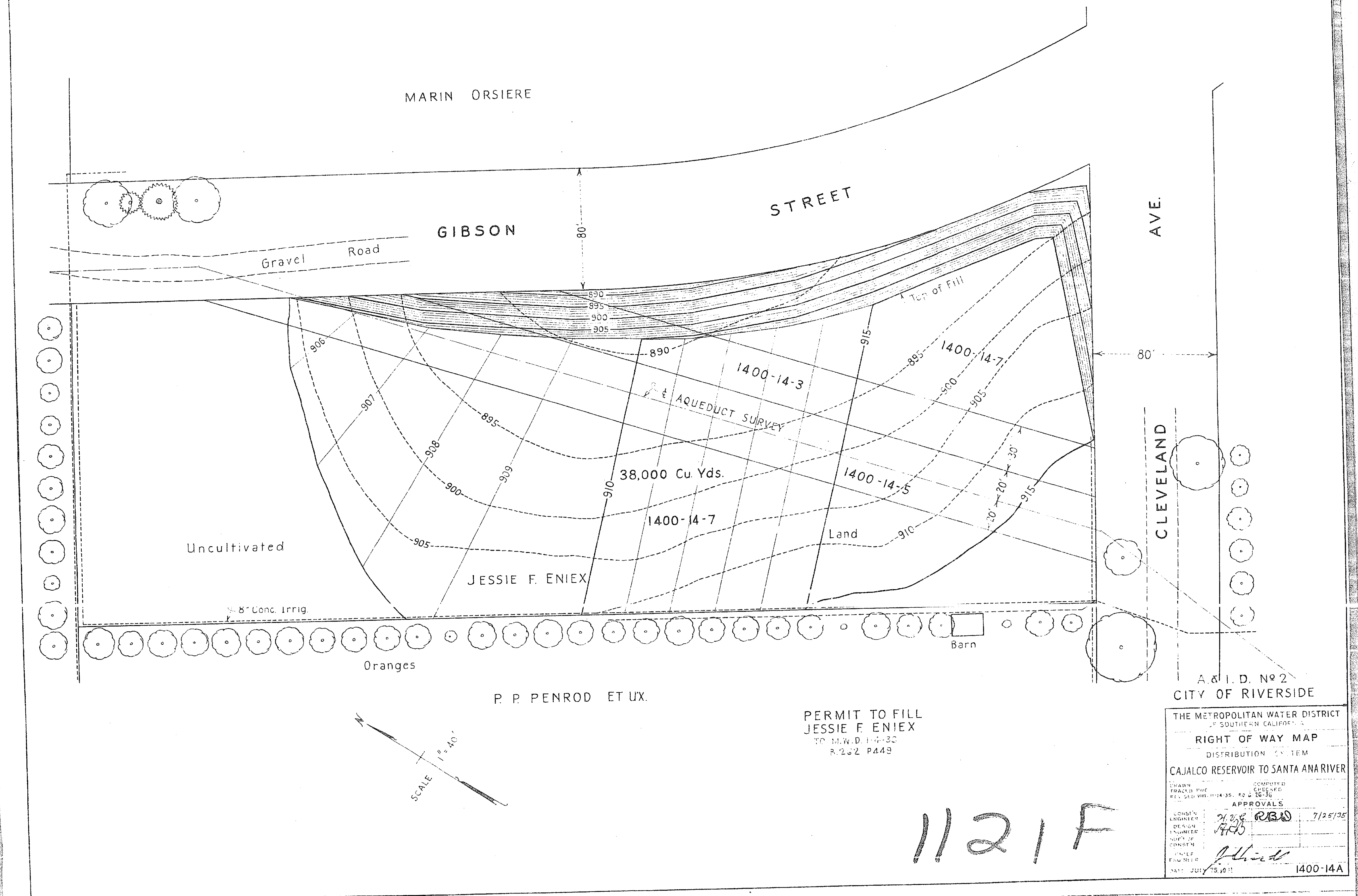
1121F

A. & I. D. No 2  
CITY OF RIVERSIDE  
THE METROPOLITAN WATER DISTRICT  
OF SOUTHERN CALIFORNIA  
RIGHT OF WAY MAP  
DISTRIBUTION SYSTEM  
CAJALCO RESERVOIR TO SANTA ANA RIVER

DRAWN	A.A.	TRACED	7/2
CHECKED	R.J.Z.	L.W.I. COMPUTED	A.A. & J.C.M.
REVISED	50.6-26-35	WORKED-41	
APPROVALS			
CONSTR. ENGINEER	R.O.B.	R.B.W.	4/11/35
DESIGN ENGINEER	F.B.		
SUPV. OF CONSTR.			
ENGINEER			
DATE	APRIL 10, 1935		1400-16







PERMIT TO FILL  
JESSIE F. ENIEX  
TO M.W.D. 14-30  
R.202 P449

A & I. D. No 2  
CITY OF RIVERSIDE

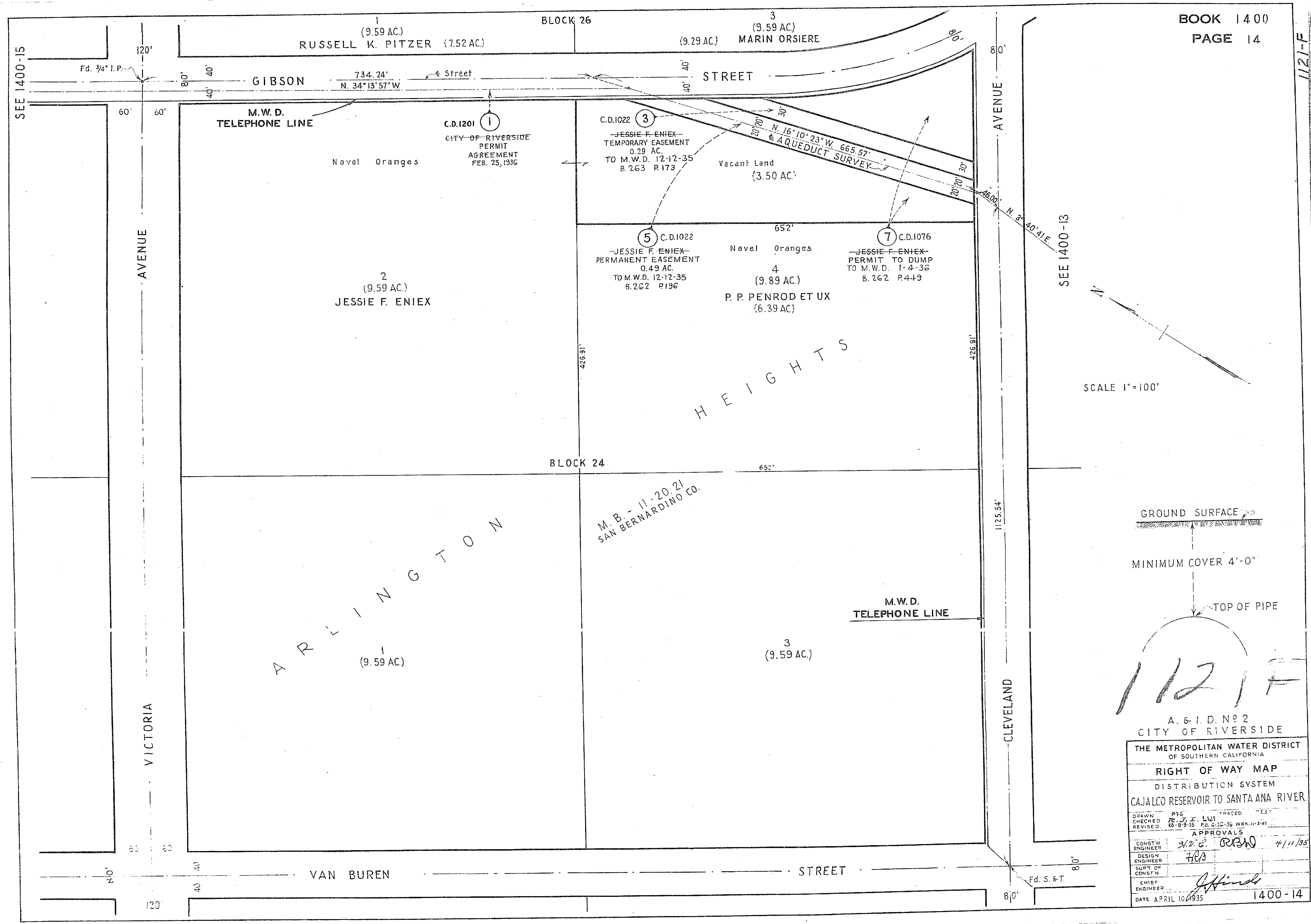
THE METROPOLITAN WATER DISTRICT  
OF SOUTHERN CALIFORNIA  
RIGHT OF WAY MAP  
DISTRIBUTION SYSTEM  
CAJALCO RESERVOIR TO SANTA ANA RIVER

DRAWN	FRANK PAGE	CHECKED	7/25/35
REVISED	7/25/35	BY	26-36
APPROVALS			
CONSTN	2/25/35	DESIGN	7/25/35
ENGINEER	7/25/35	INSURER	
NOTY OF		CONSTR	
FILE		NUMBER	
DATE: JULY 25, 1935			

1400-14A

1121F





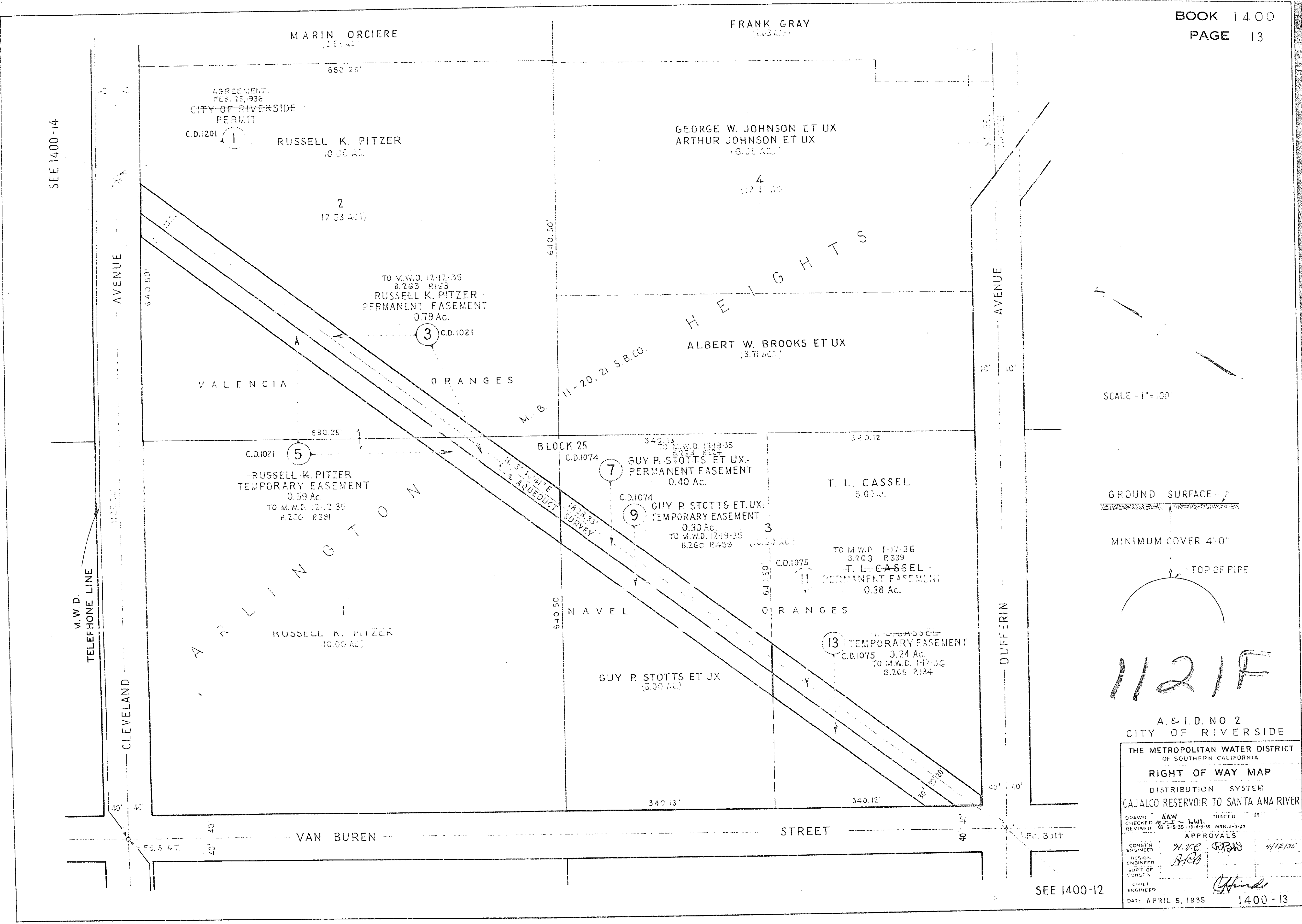
BOOK 1400  
PAGE 14

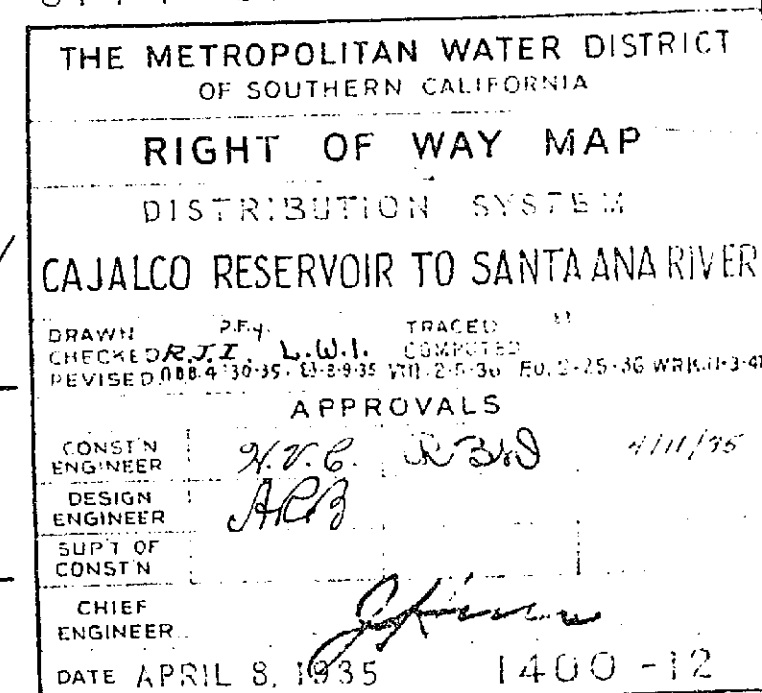
GROUND SURFACE  
MINIMUM COVER 4'-0"  
TOP OF PIPE

1121 F

A. & I. D. No. 2  
CITY OF RIVERSIDE

THE METROPOLITAN WATER DISTRICT OF SOUTHERN CALIFORNIA			
RIGHT OF WAY MAP			
DISTRIBUTION SYSTEM			
CAJALCO RESERVOIR TO SANTA ANA RIVER			
DRAWN	PTG	TRACED	4/11/35
CHECKED	7-2 J. LUI		
REVISED	68-9-35	FO. G. 12-36	WRK. 11-3-41
APPROVALS			
CONST'N ENGINEER	W. E. ORBON		
DESIGN ENGINEER	7/03		
SUPT. OF CONST'N			
CHIEF ENGINEER			
DATE APRIL 10, 1935			1400-14







16

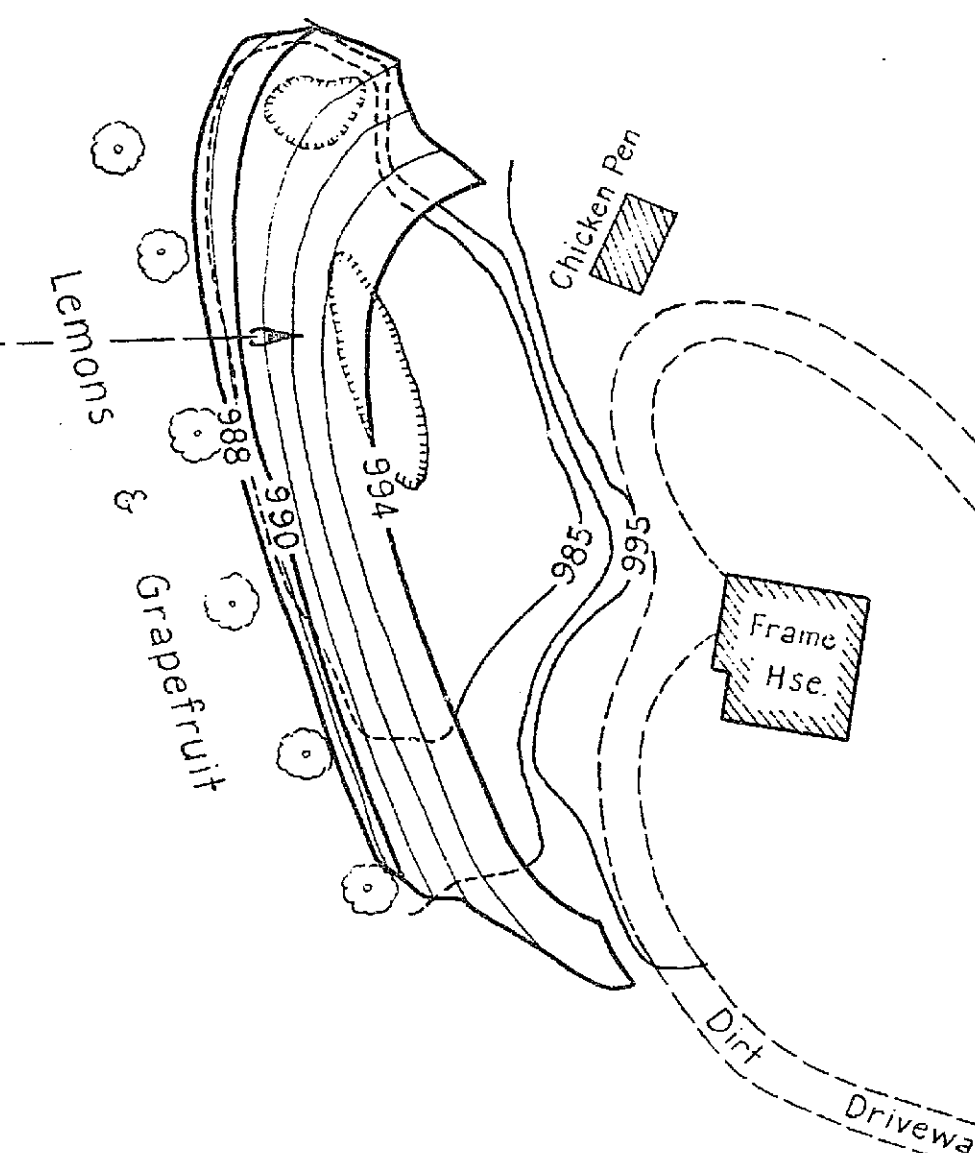
ARLINGTON HEIGHTS

M. B. 11-20, 21

RECORDS OF SAN BERNARDINO CO.

LOT 5

C.D. 1146  
PERMIT TO FILL  
SARAH M. BLYMYER  
3,000 Cu. Yds.  
TO M.W.D. 3-3-36  
B. 269 R. 170



SARAH M. BLYMYER

HARRISON

STREET

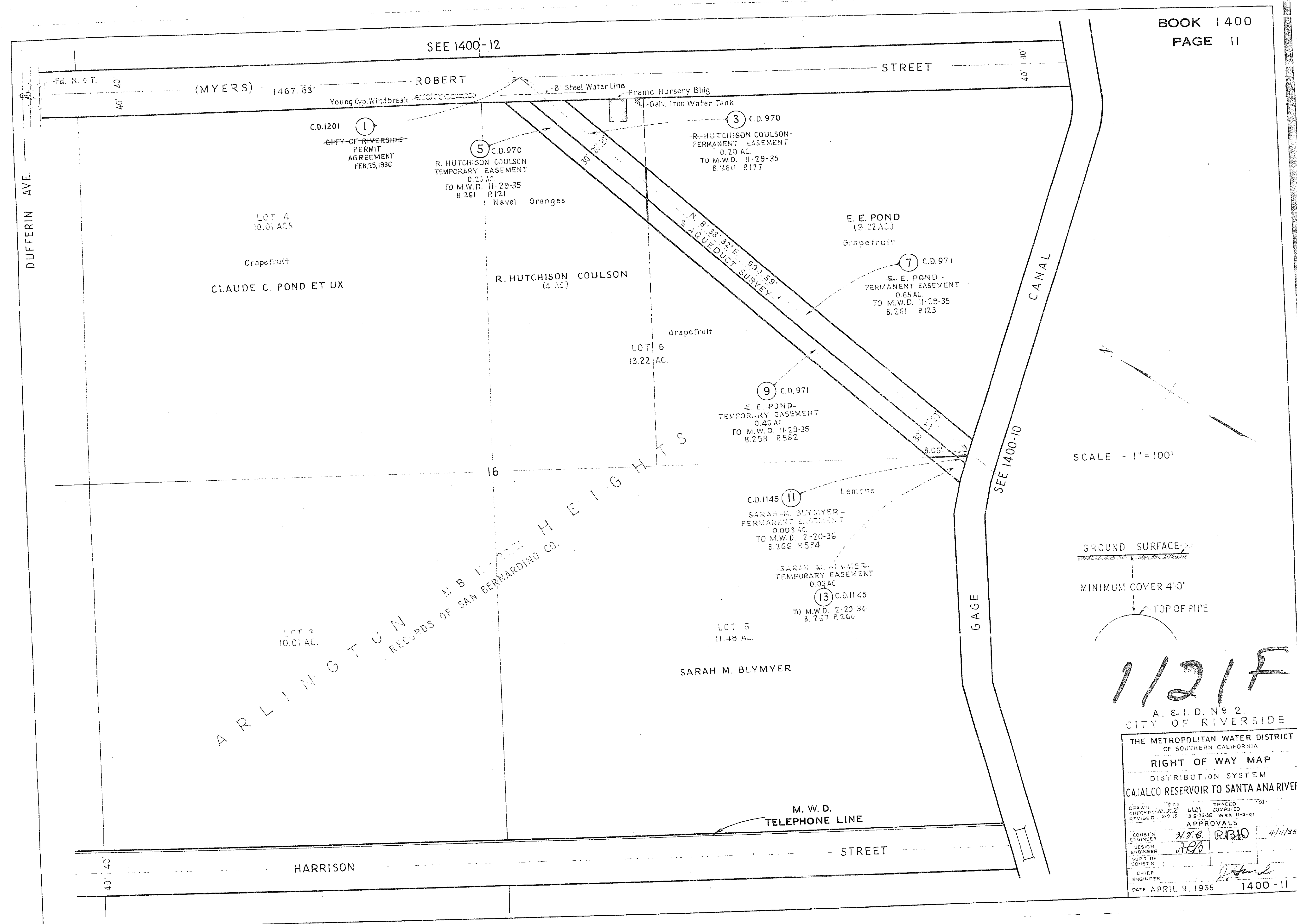
SCALE 1" = 50'

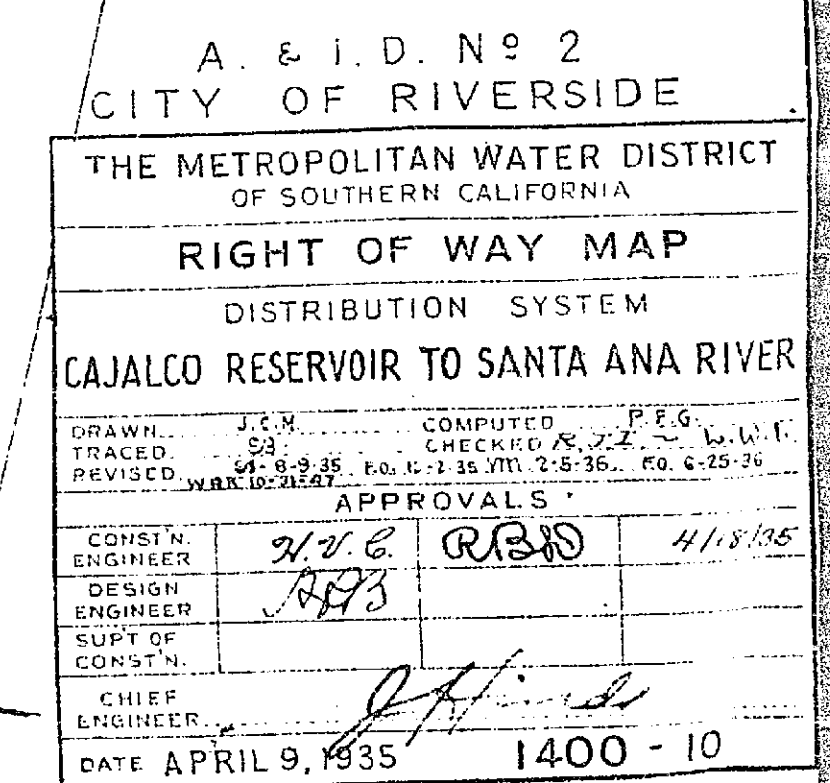
1121F

A. & I. D. No. 2  
CITY OF RIVERSIDE  
THE METROPOLITAN WATER DISTRICT  
OF SOUTHERN CALIFORNIA  
RIGHT OF WAY MAP  
DISTRIBUTION SYSTEM  
CAJALCO RESERVOIR TO SANTA ANA RIVER

DRAWN TRACED REVISED	BY P.W.C. 10-13-35	CHECKED R.F.E. 10-23-35
APPROVALS		
CONSTN ENGINEER DESIGN ENGINEER SUPT OF CONSTN	10/23/35	
DATE OCTOBER 23, 1935		

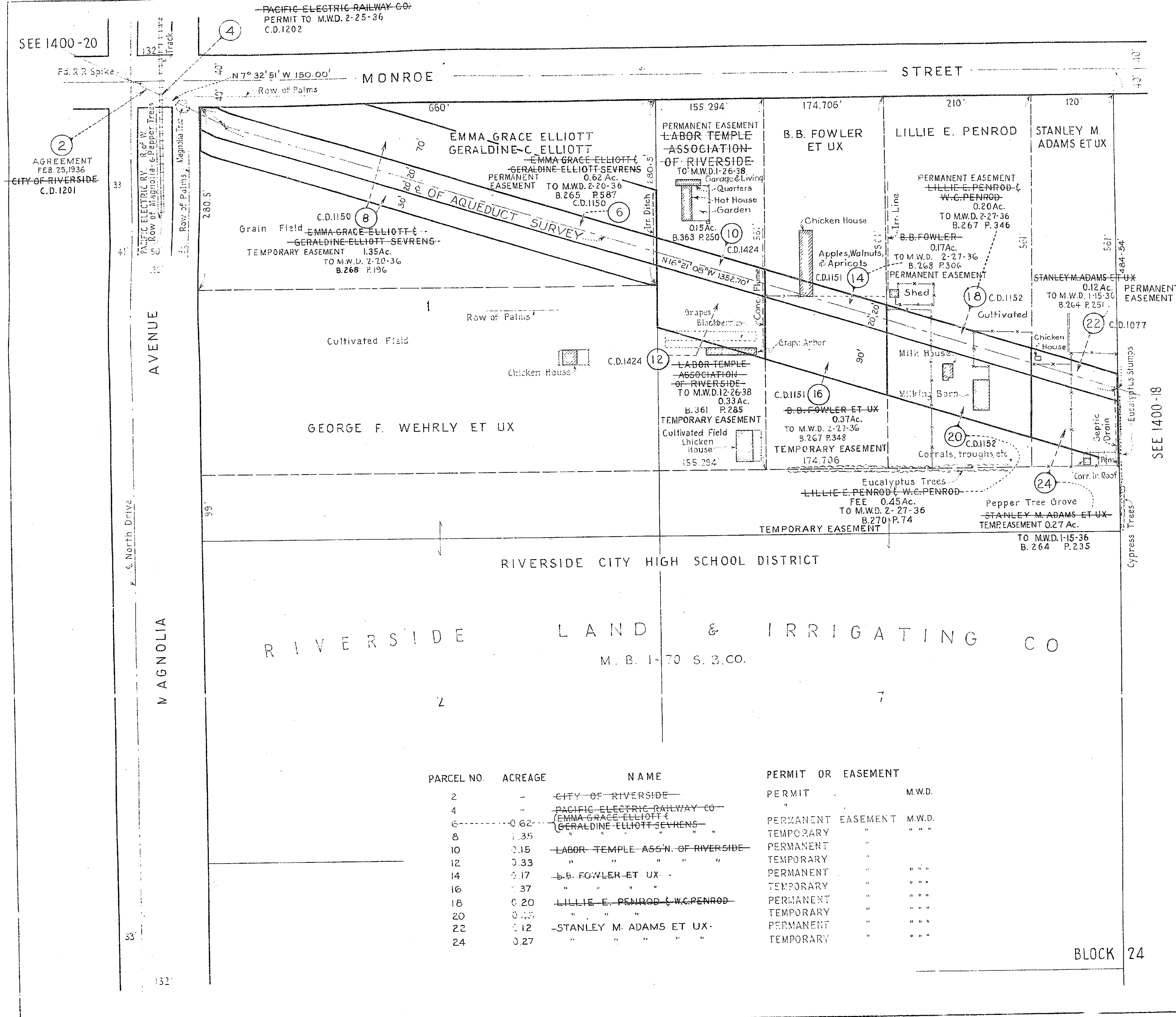
1400-11A



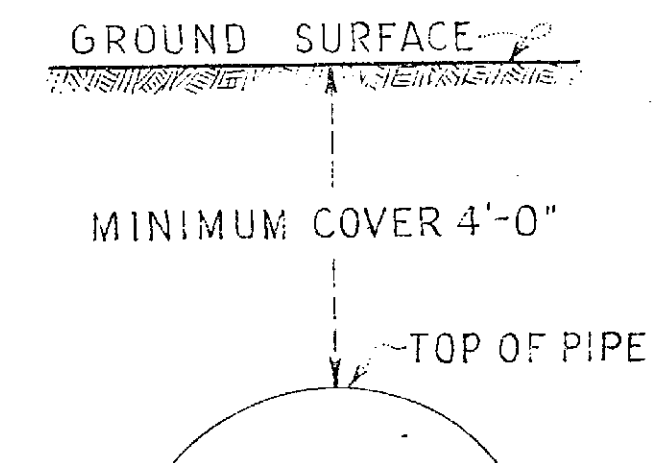




SEE 1400-20



SCALE - 1" = 100'



1121 F

A. & I. D. NO. 2  
CITY OF RIVERSIDE

THE METROPOLITAN WATER DISTRICT  
OF SOUTHERN CALIFORNIA

RIGHT OF WAY MAP  
DISTRIBUTION SYSTEM

CAJALCO RESERVOIR TO SANTA ANA RIVER

DRAWN BY: [Signature] CHECKED BY: [Signature] TRACED BY: [Signature]  
REVISED BY: [Signature] W.C.L. 2-29-35 EQ. 2-26-36 WSKH-5-47

APPROVALS

CONST'N ENGINEER: [Signature] DESIGN ENGINEER: [Signature] SUFF. OF CONST'N: [Signature] CHIEF ENGINEER: [Signature]

4/12/35

BLOCK 24

