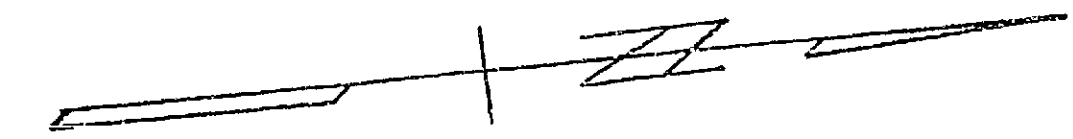


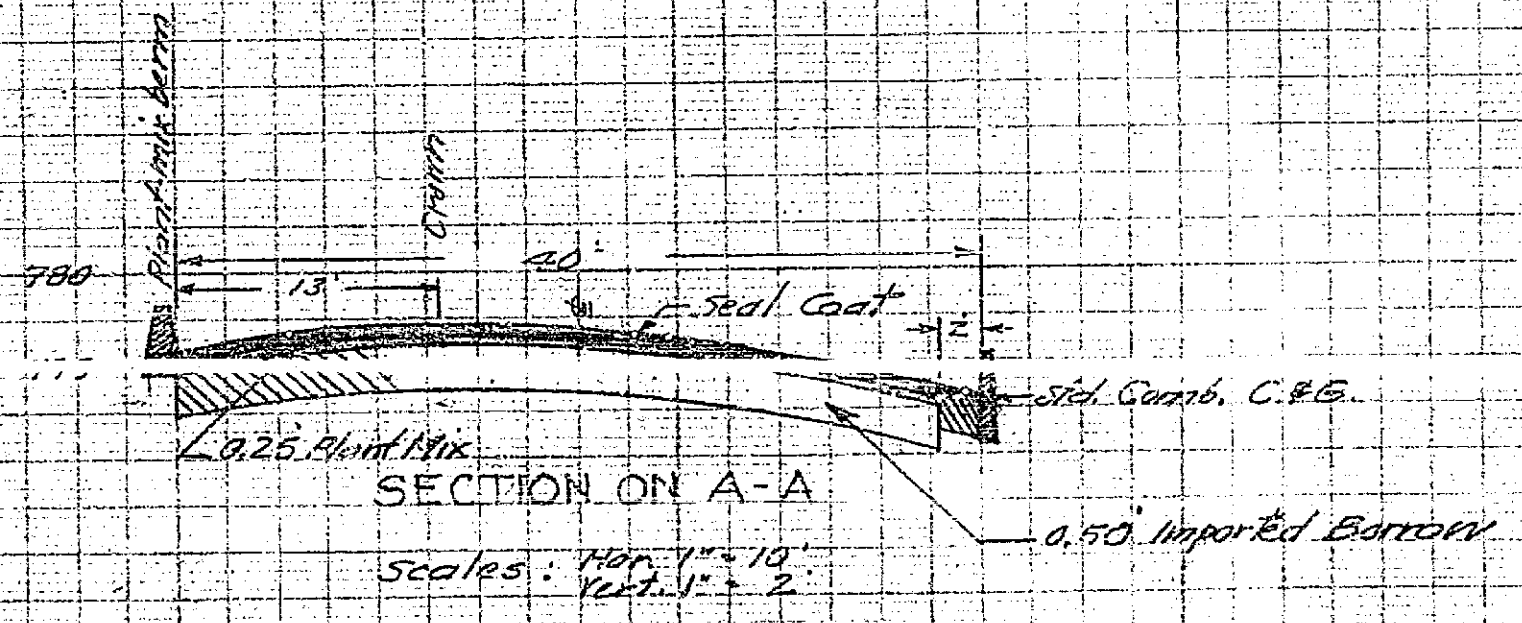
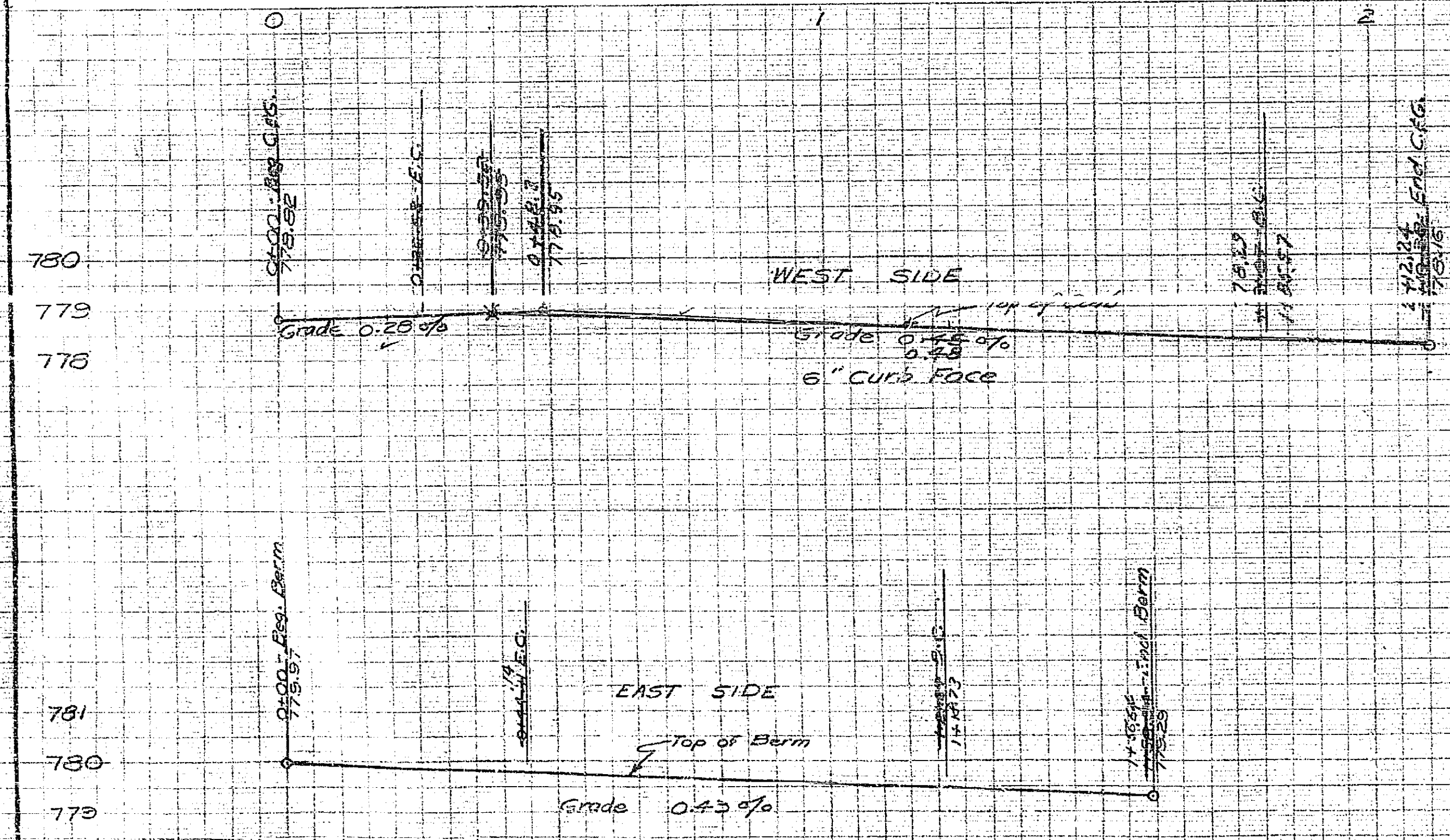
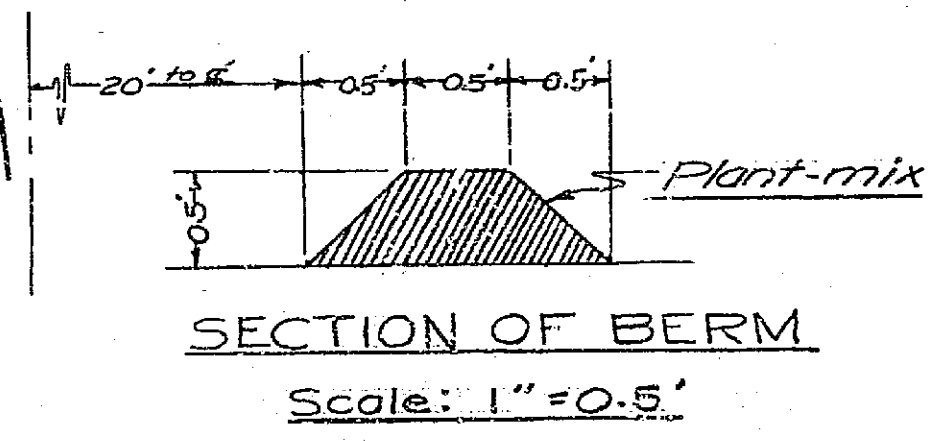
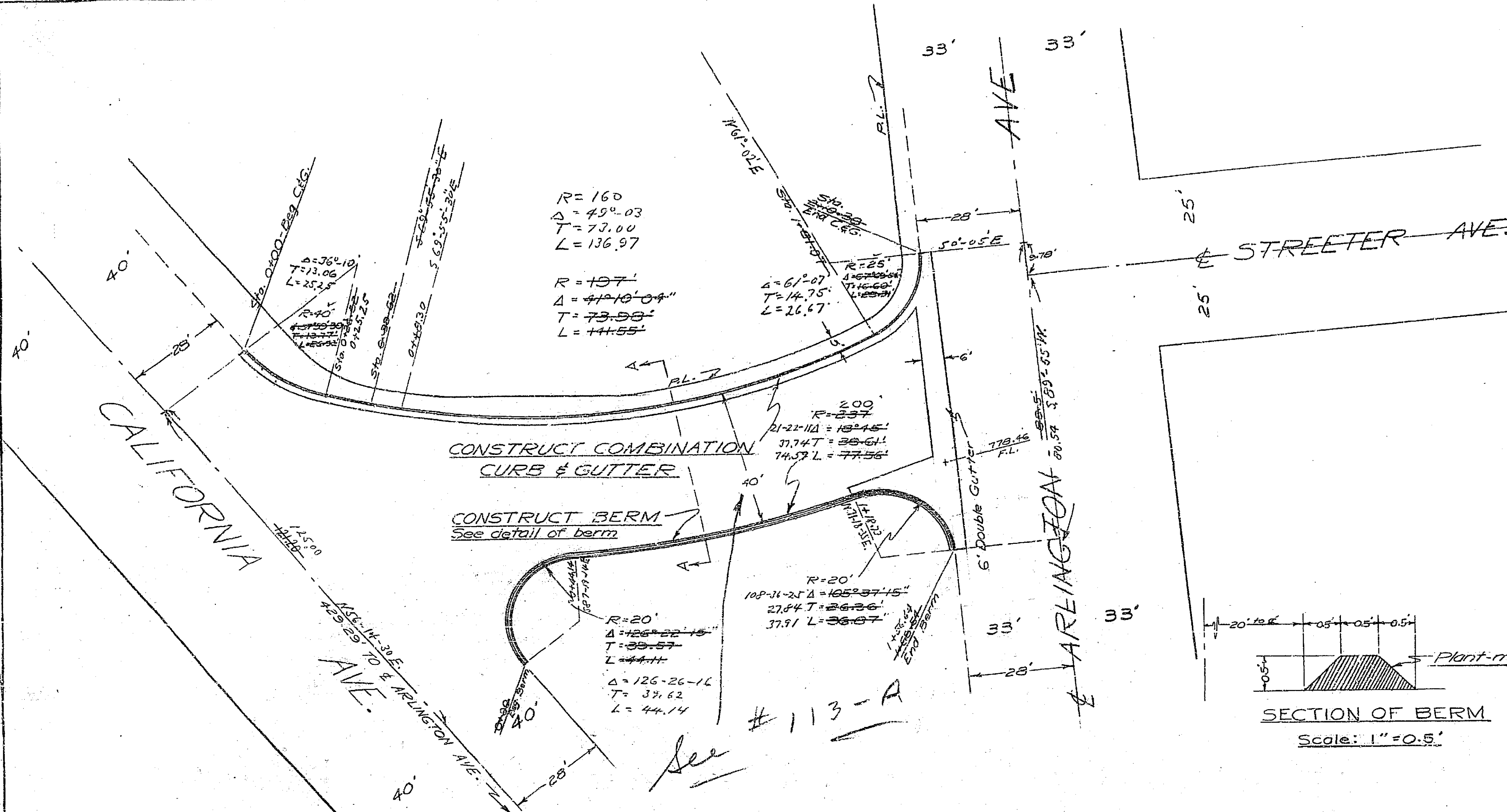
REVISED
PLAN AND PROFILE
NO. 113
 FOR THE CONSTRUCTION OF CURB & GUTTER ON
STREETER AVE.
 BETWEEN CALIFORNIA AND ARLINGTON AVENUES
 RIVERSIDE, CALIFORNIA



SCALES: HORIZ. 1"=20'
 VERT. 1"=2'

APPROVED: M. H. Irvine.
 M.H. IRVINE, REG. C.E. #5011
 CITY ENGINEER

REVISION APPROVED _____



113