

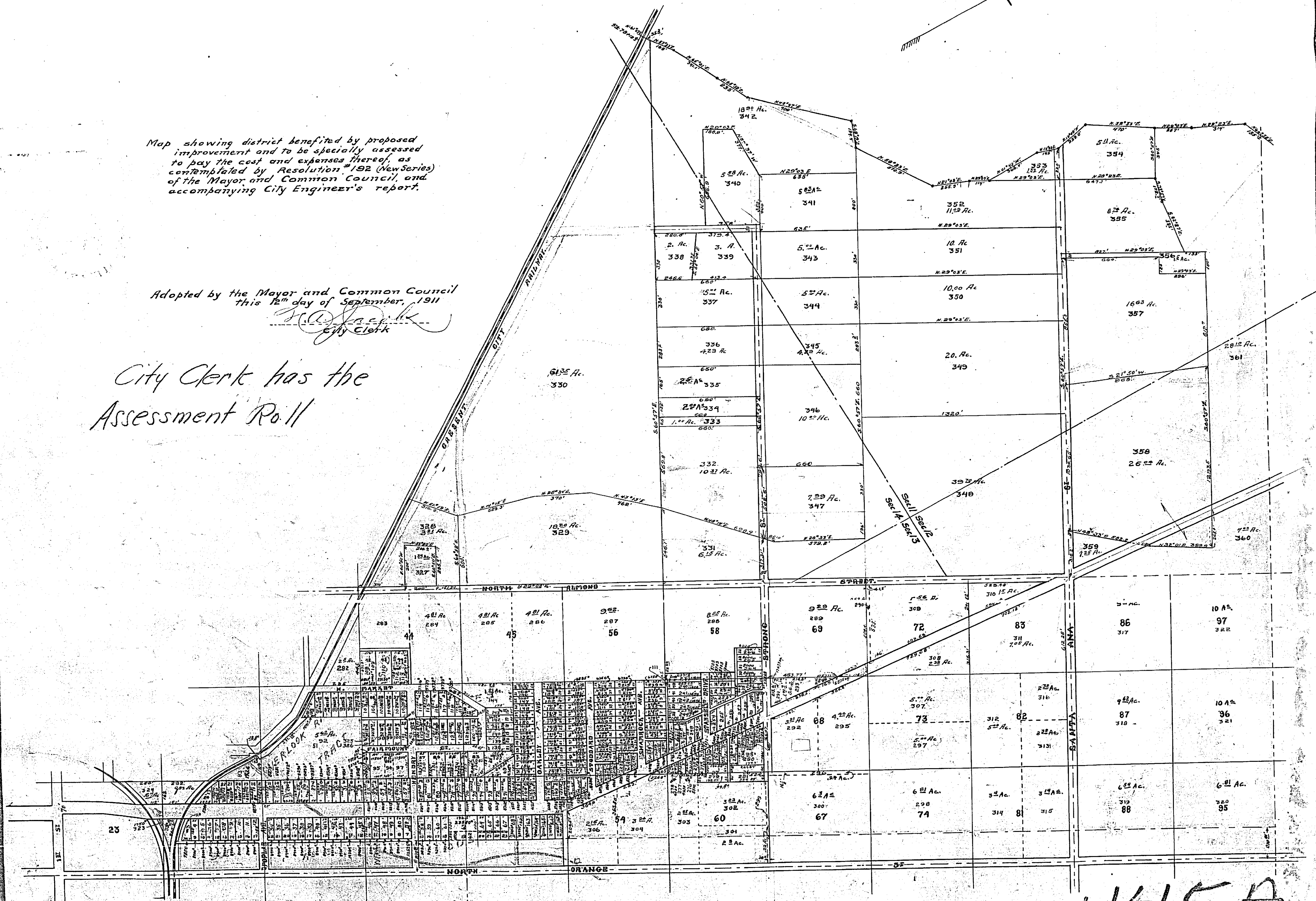
EXHIBIT "D"

Map showing district benefited by proposed improvement and to be specially assessed to pay the cost and expenses thereof, as contemplated by Resolution #192 (New Series) of the Mayor and Common Council, and accompanying City Engineer's report.

Adopted by the Mayor and Common Council this 12th day of September, 1911

J. D. Jackson
City Clerk

City Clerk has the Assessment Roll



1145A

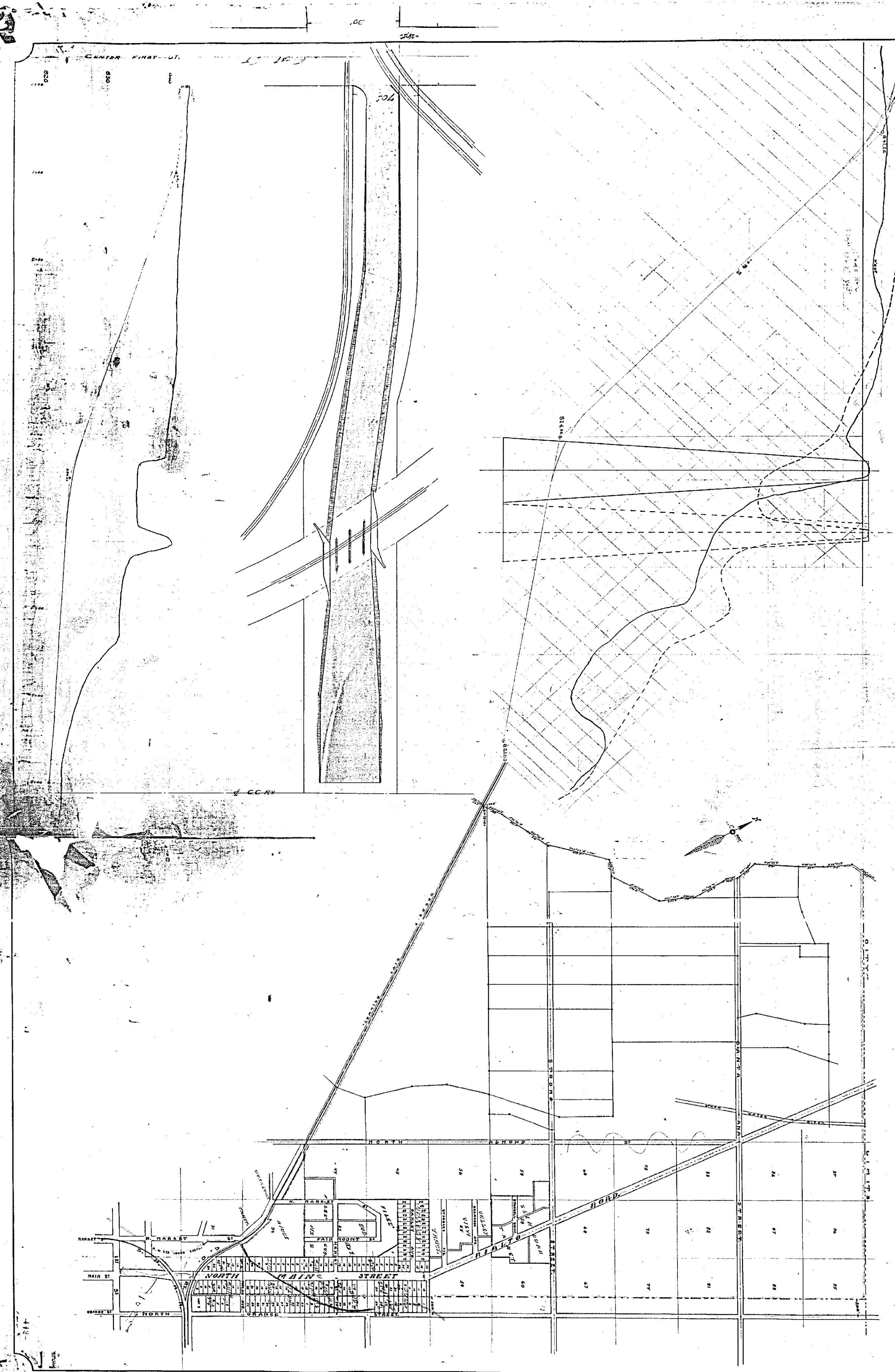
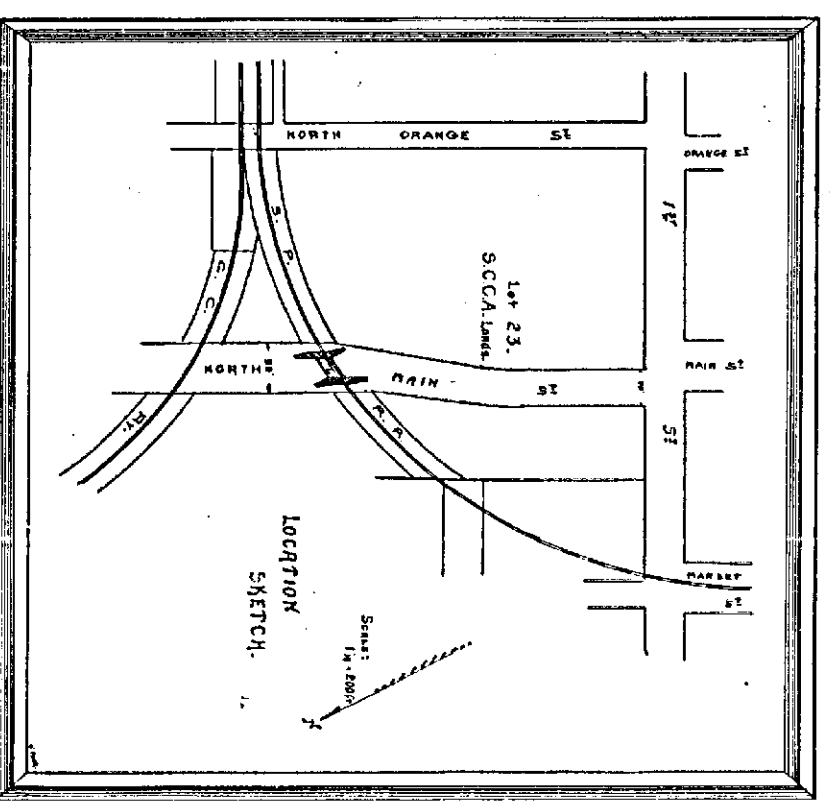
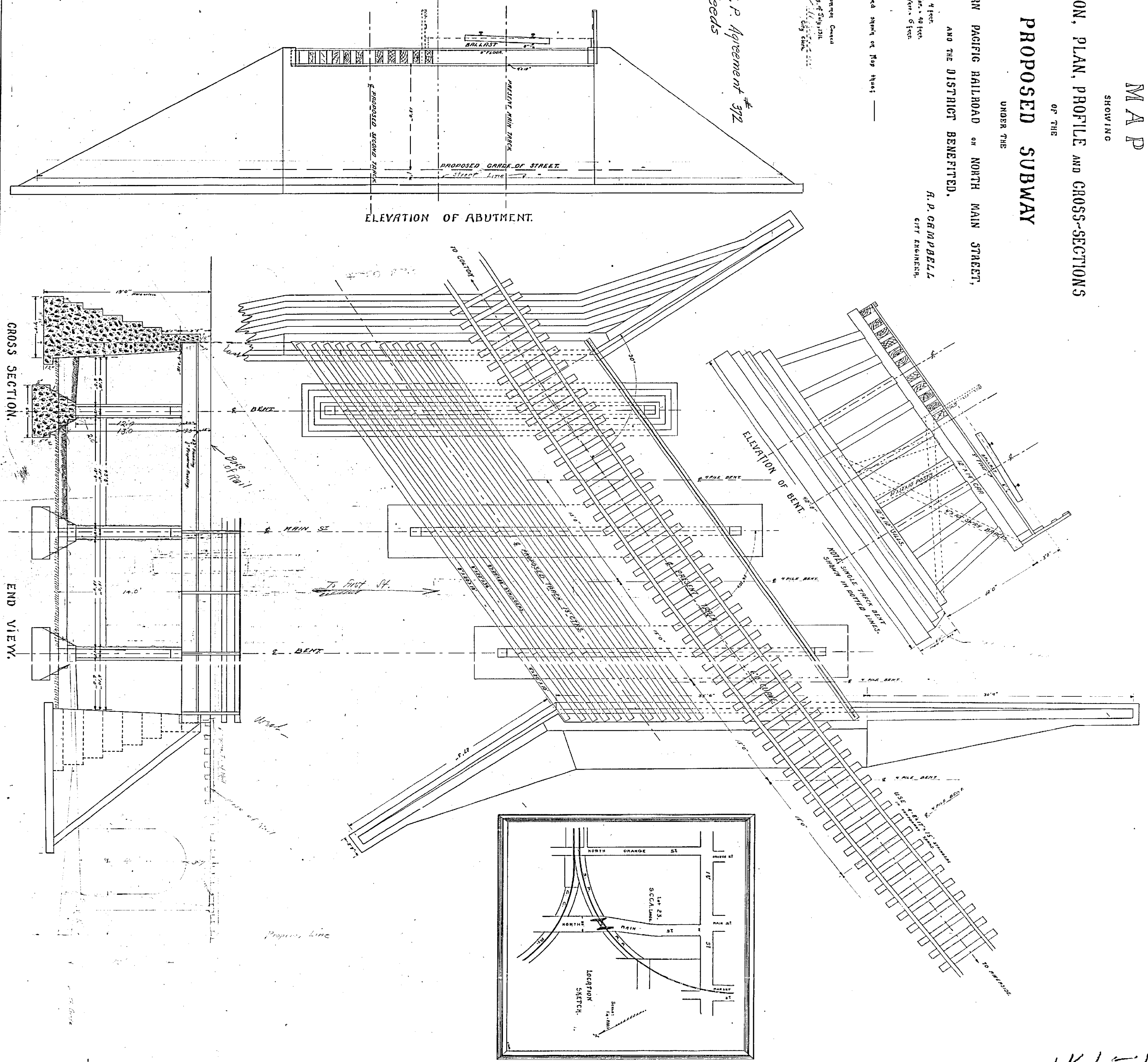
M A P
SHOWING

LOCATION, PLAN, PROFILE AND CROSS-SECTIONS
OF THE
PROPOSED SUBWAY
UNDER THE

SOUTHERN PACIFIC RAILROAD ON NORTH MAIN STREET,
AND THE DISTRICT BENEFITED.
A. P. GRAPPALL
CITY ENGINEER.

District benefited shown on Map must —
Approved by the Mayor and Common Council
of the City of Newark November 27, 1911.
City Engineer.

*See S. P. Agreement of 1912
with deeds*



1175A