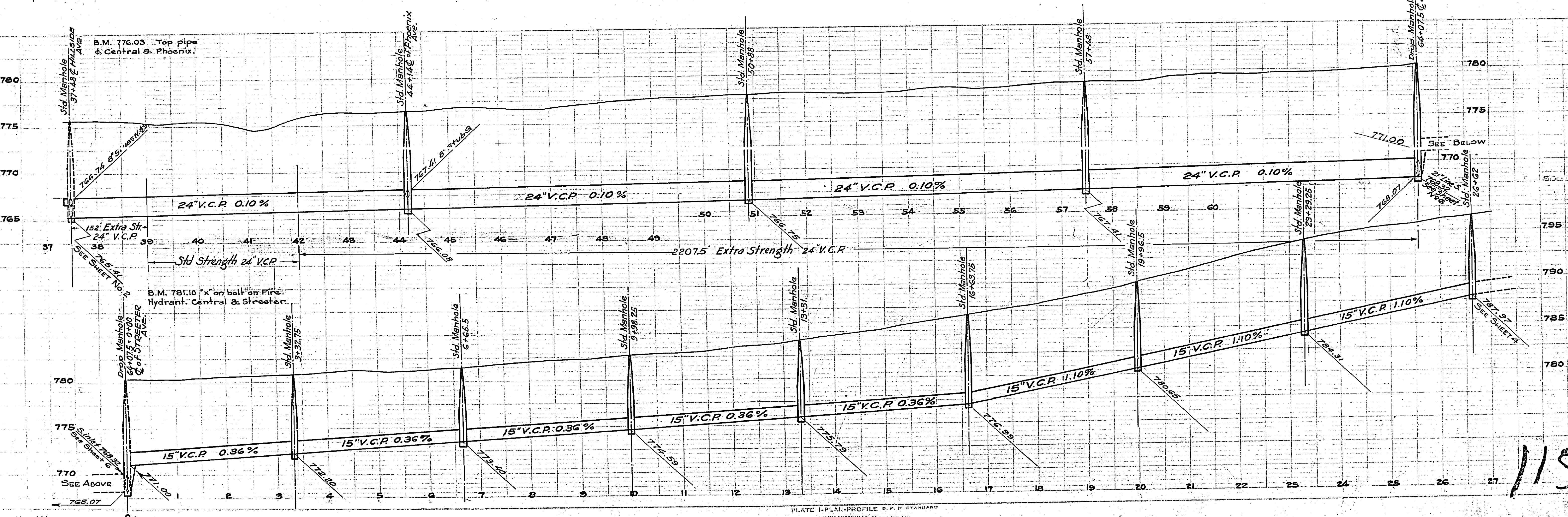
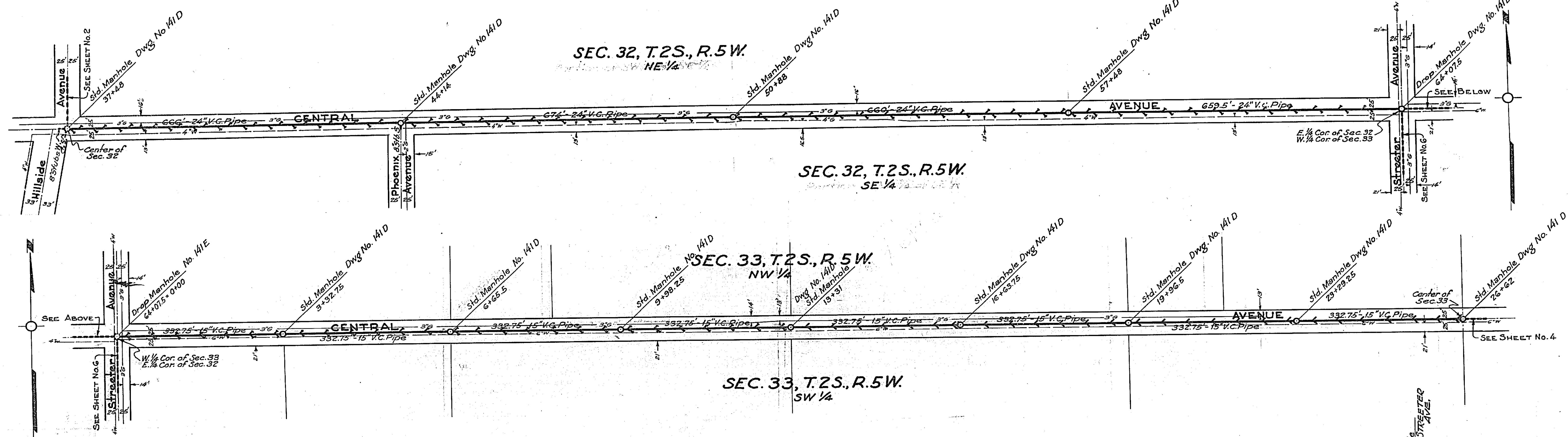


PLANS & PROFILES
 NO. 1151
 OF

MAGNOLIA CENTER-CASA BLANCA TRUNK SEWER

RIVERSIDE CALIFORNIA

1151



1157

1511

SANITARY SEWER SYSTEM FOR MAGNOLIA CENTER & CASA BLANCA DISTRICTS

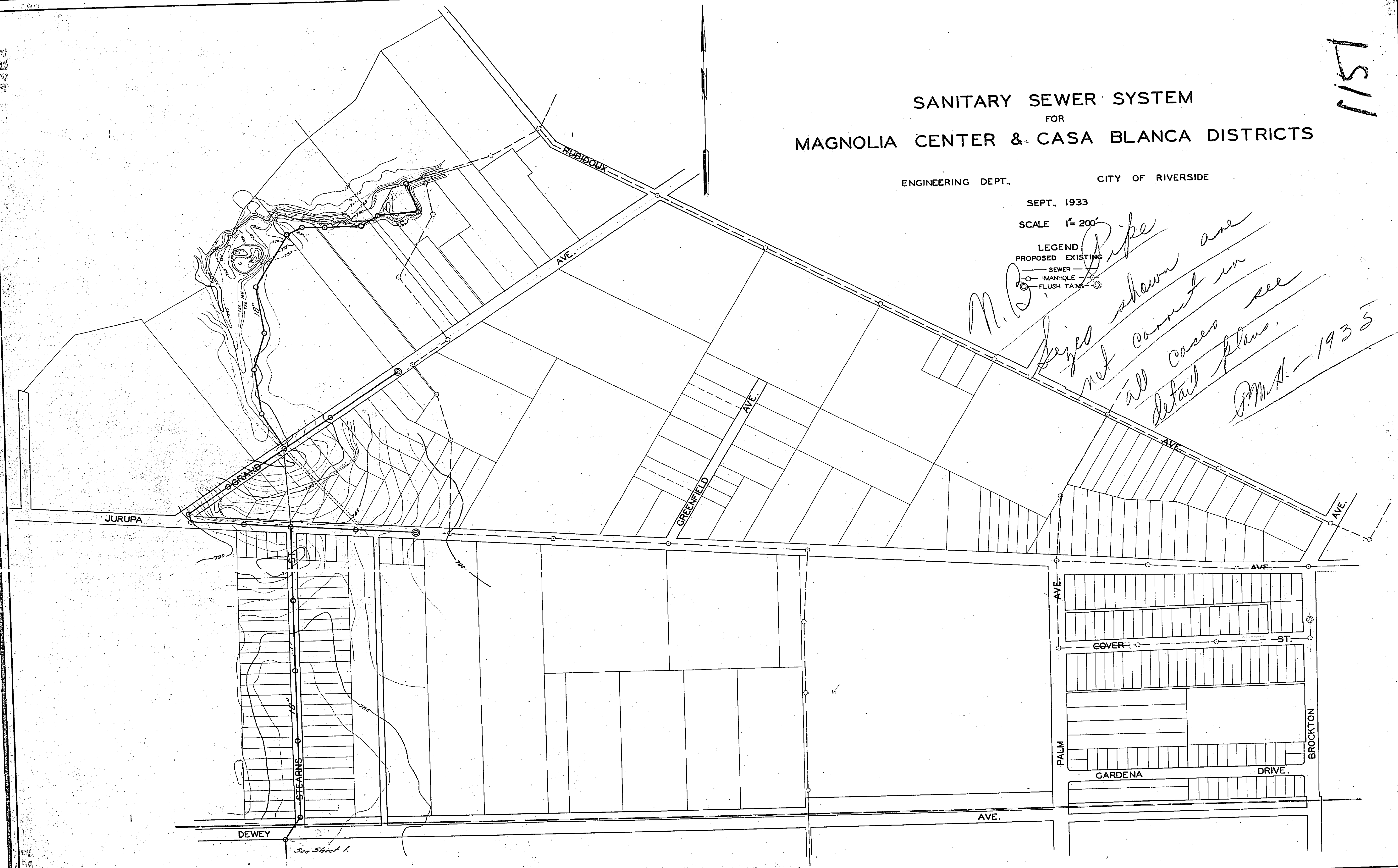
ENGINEERING DEPT. CITY OF RIVERSIDE
SEPT., 1933

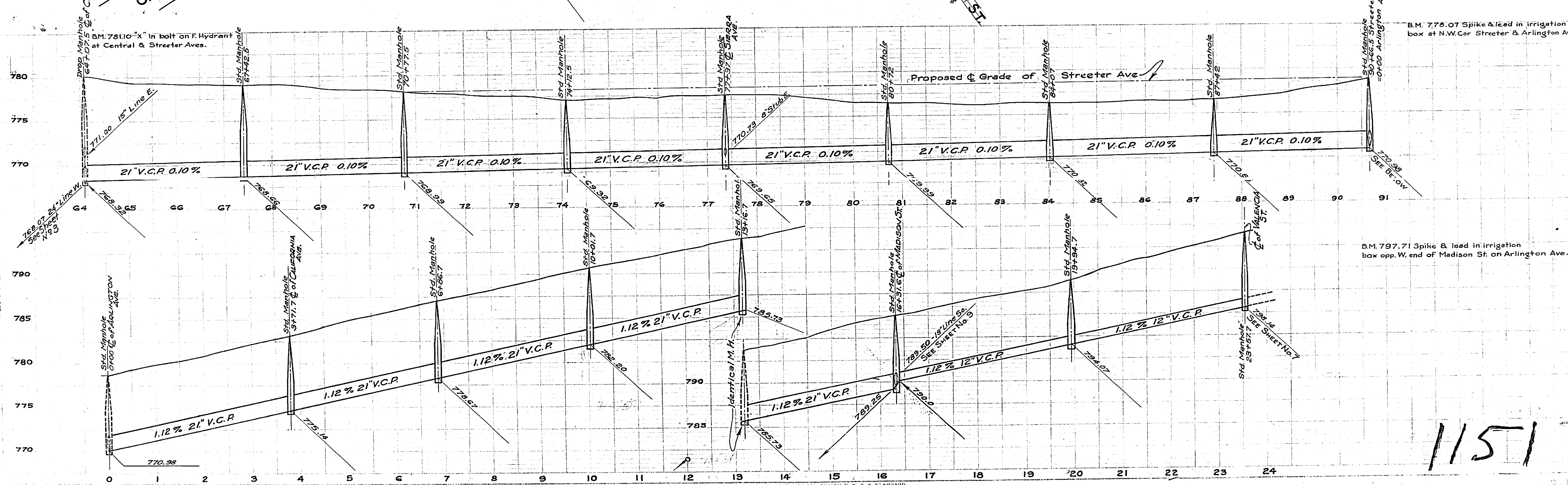
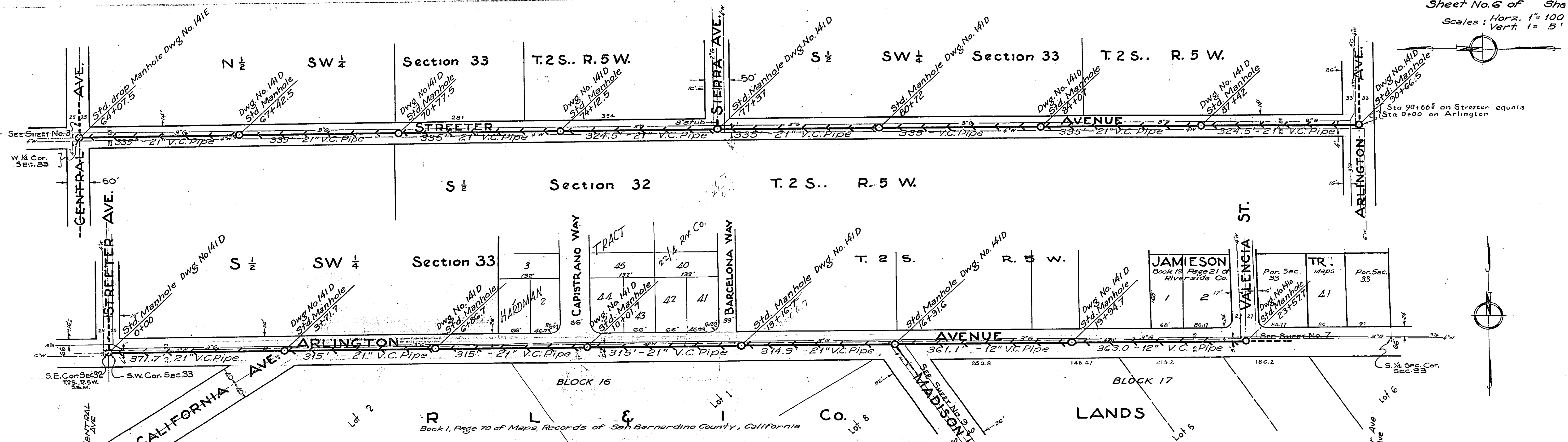
SCALE 1" = 200'

LEGEND

—	PROPOSED SEWER
—	EXISTING SEWER
○	MANHOLE
⊙	FLUSH TANK

*M.B. Pipe
sized shown are
not correct and
all cases in
detail plans see
D.M.A. - 1935*





1151

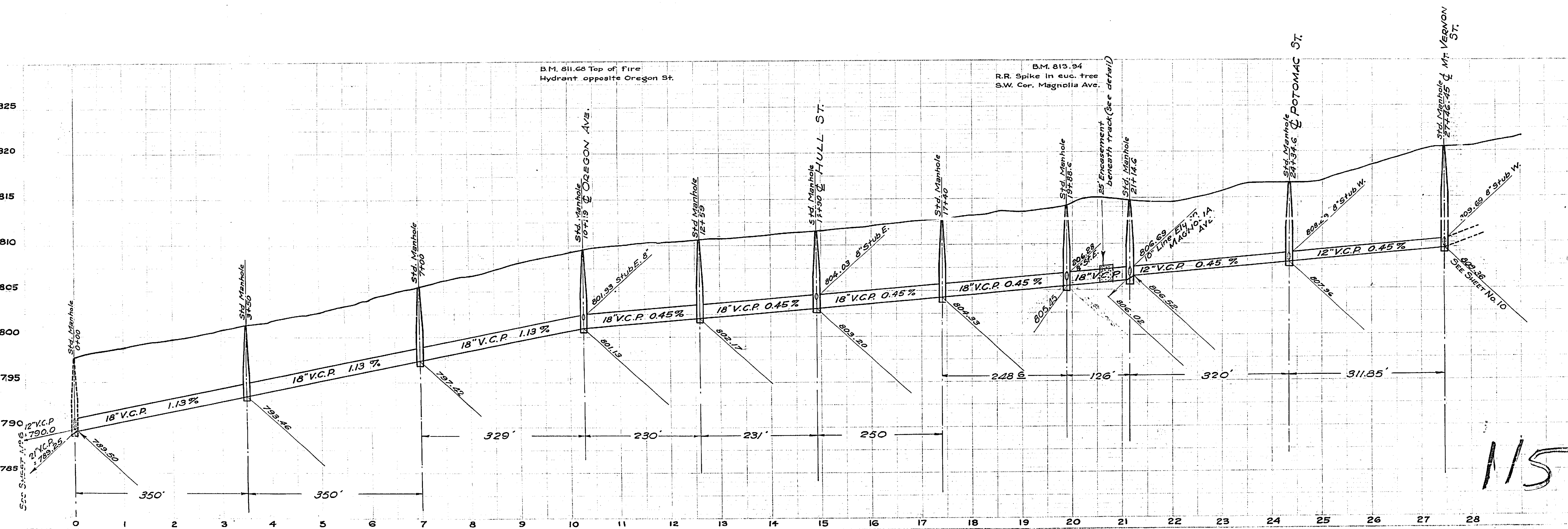
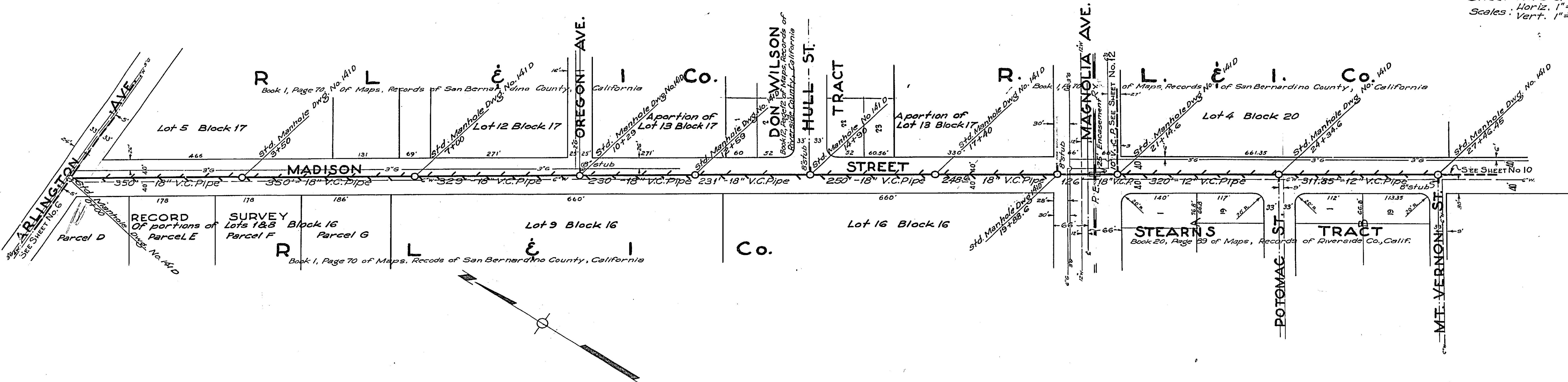
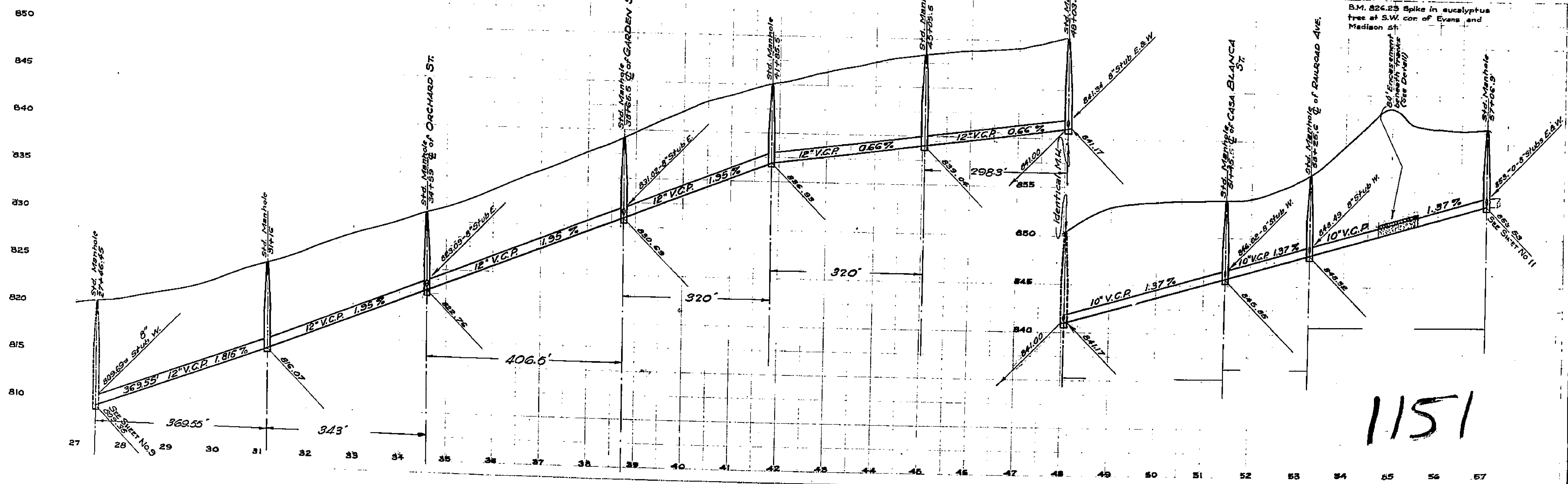
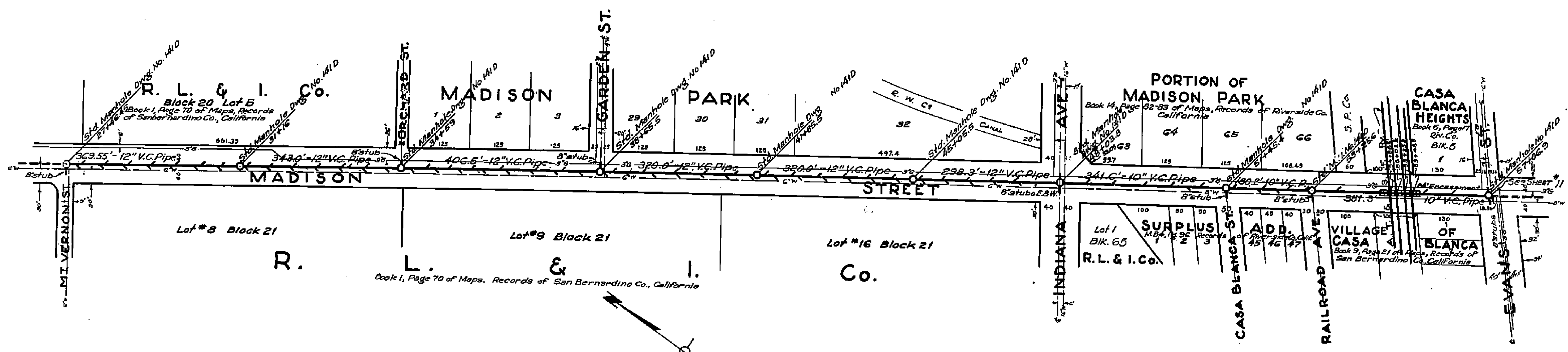
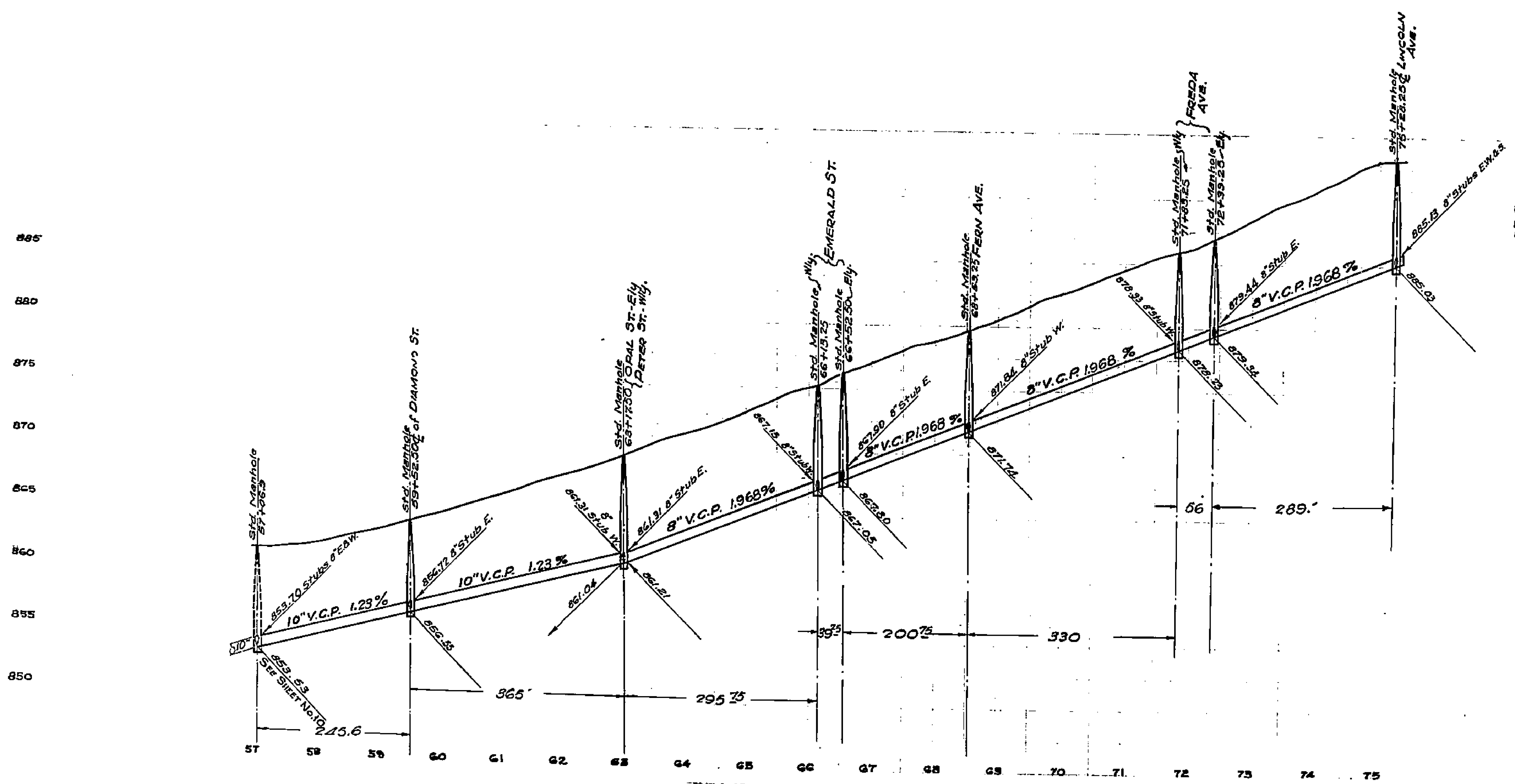
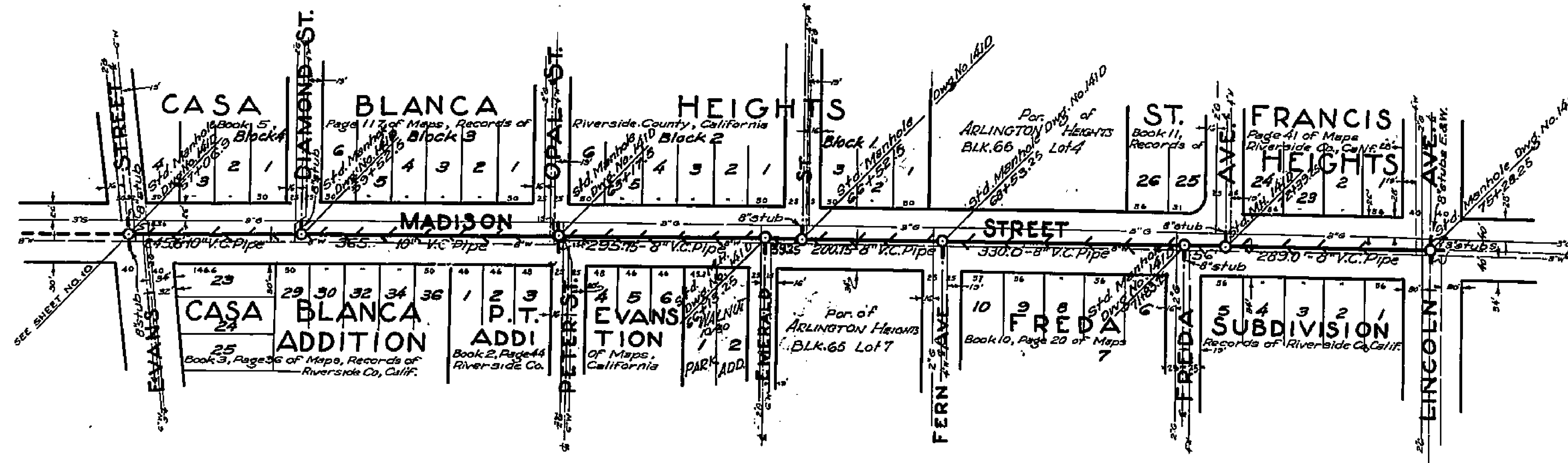


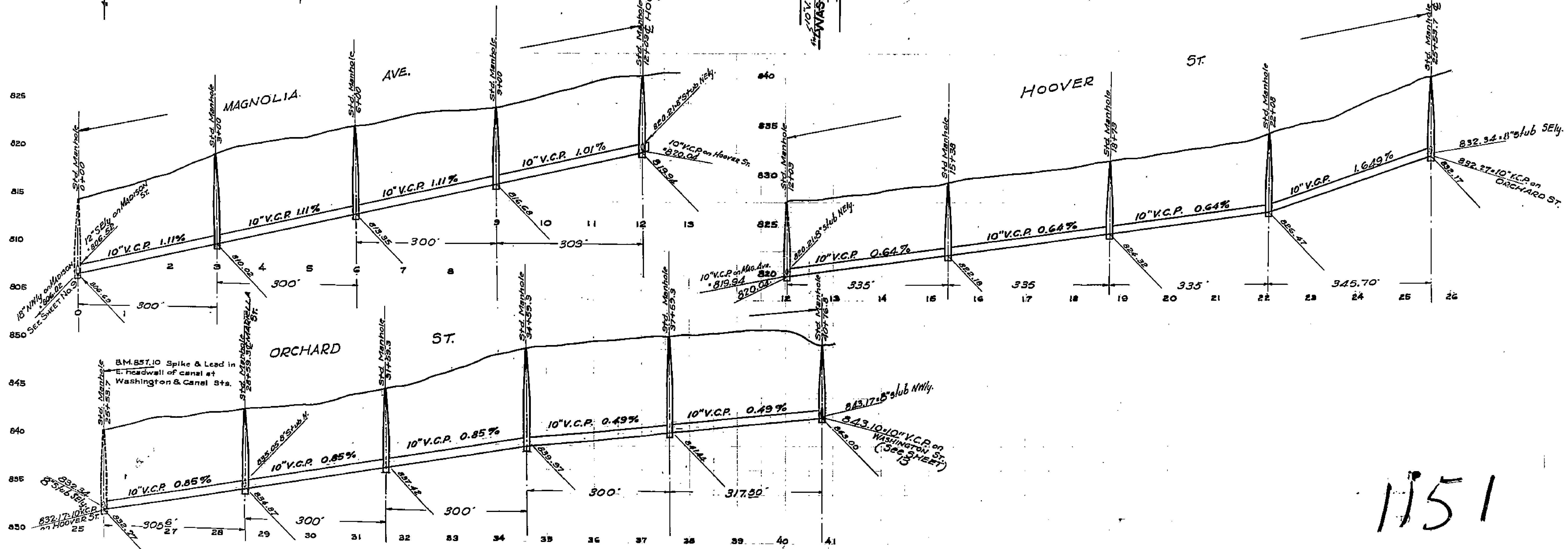
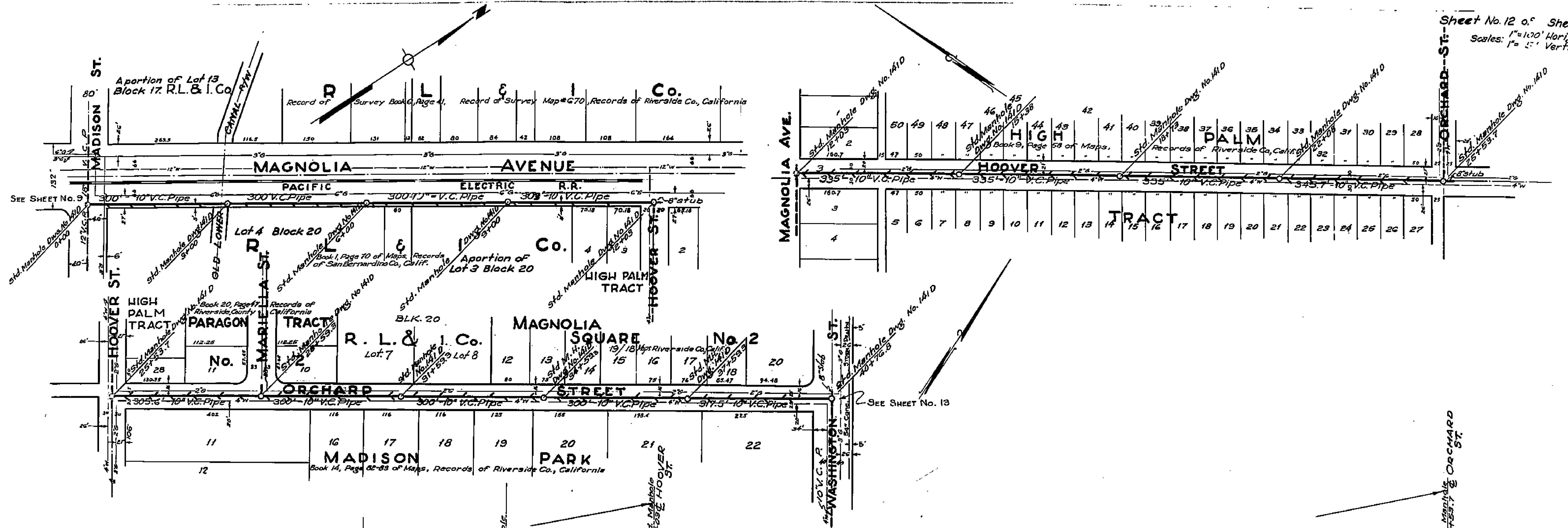
PLATE I - PLAN & PROFILE OF SEWER LINE
 ENGINEERED BY CHAS. E. HARRIS

1151

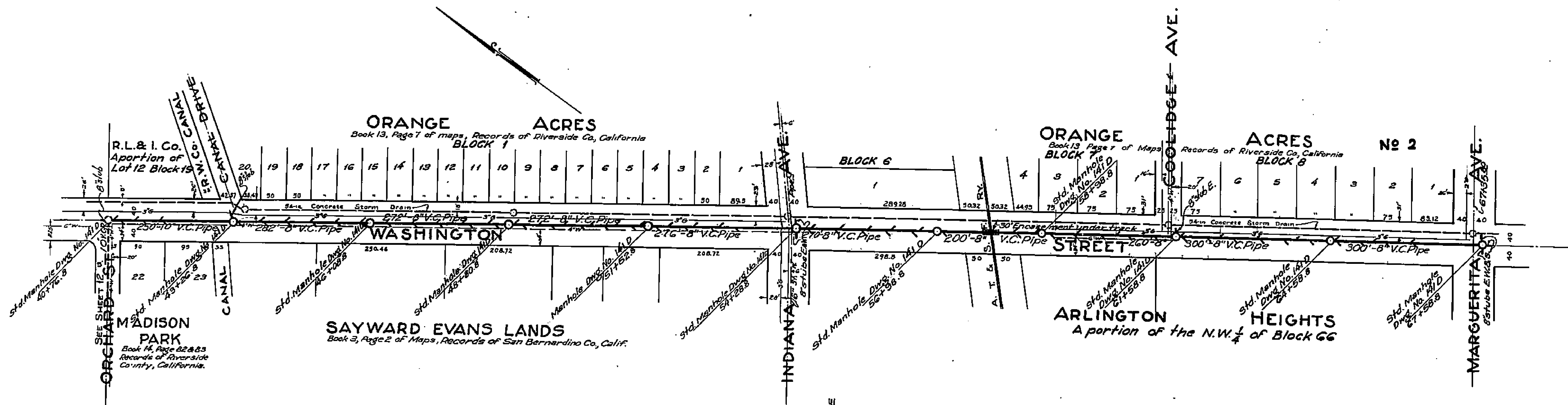




1151

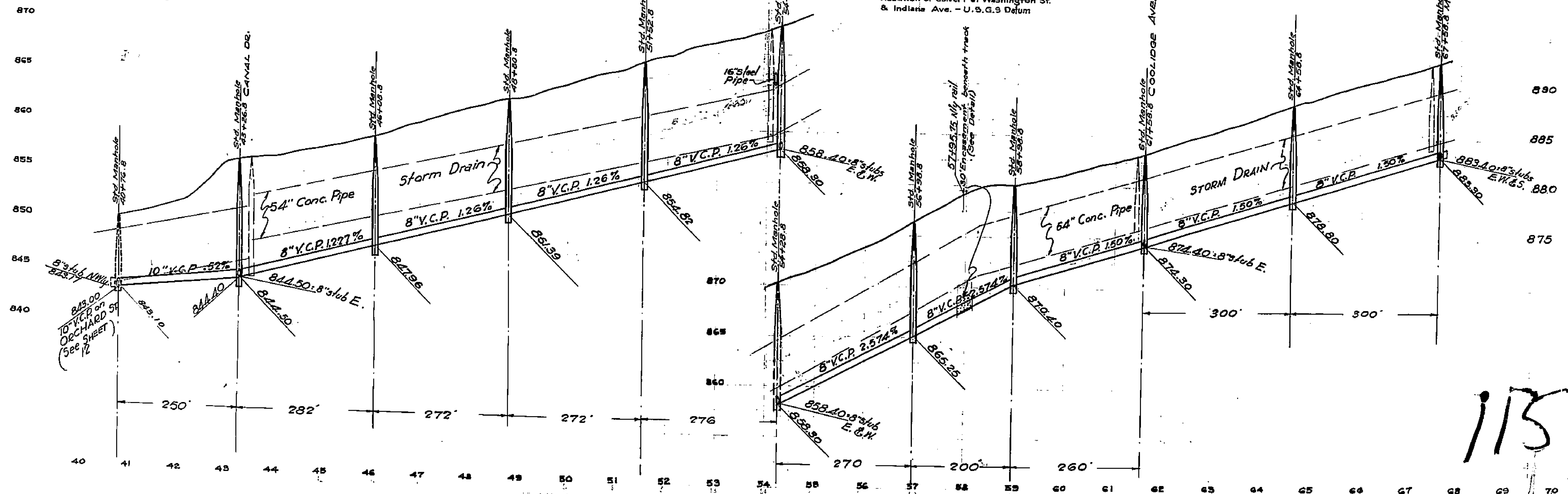


1151



B.M. 857.10 Spike & Lead in E. Headwall of Canal at Washington and Canal Sta.

B.M. 870.508 Spike and lead in W. Headwall of culvert at Washington St. & Indiana Ave. - U.S.G.S Datum



1151

1151

SANITARY SEWER SYSTEM FOR MAGNOLIA CENTER & CASA BLANCA DISTRICTS

ENGINEERING DEPT. CITY OF RIVERSIDE

SEPT. 1933

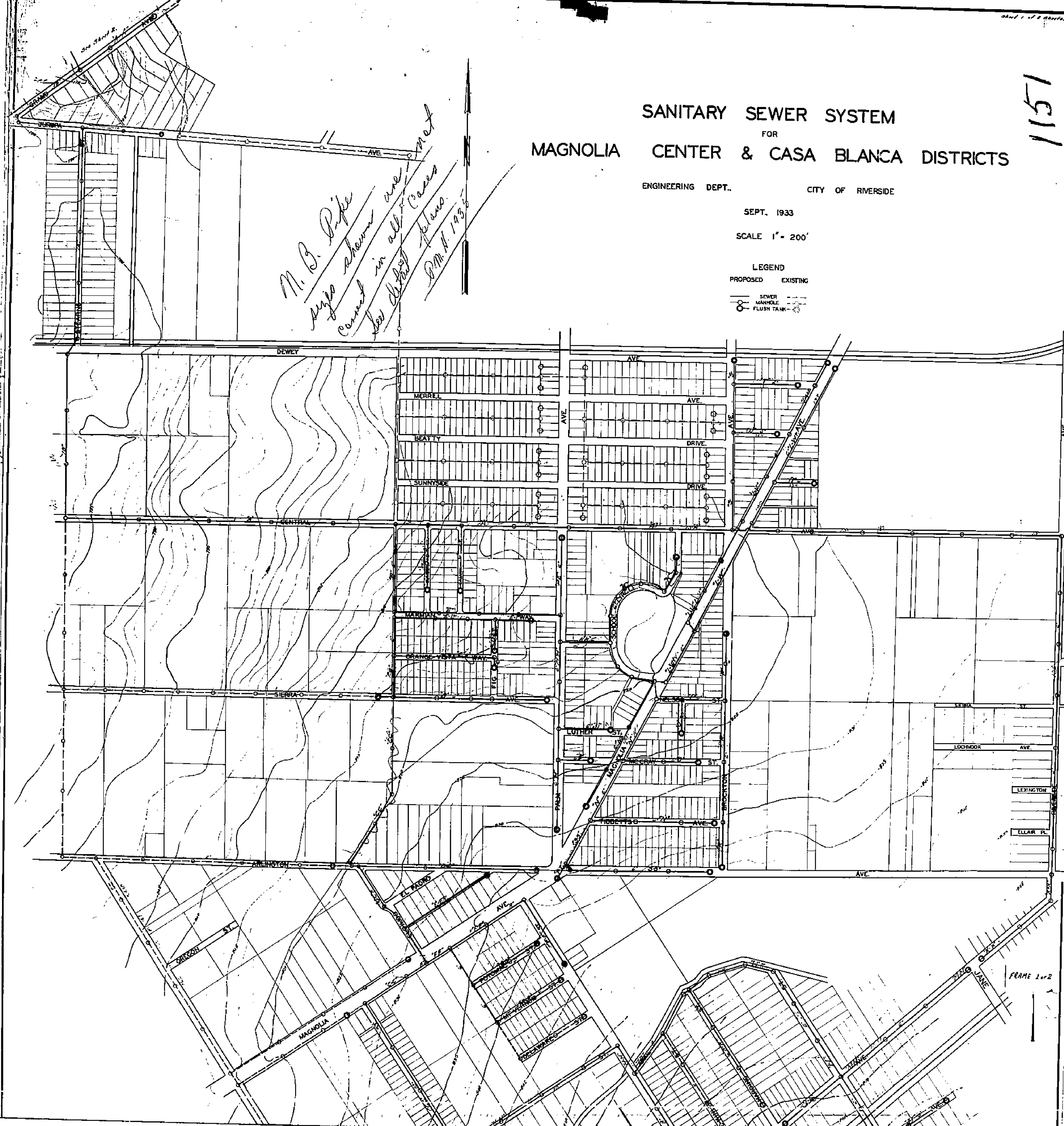
SCALE 1" = 200'

LEGEND

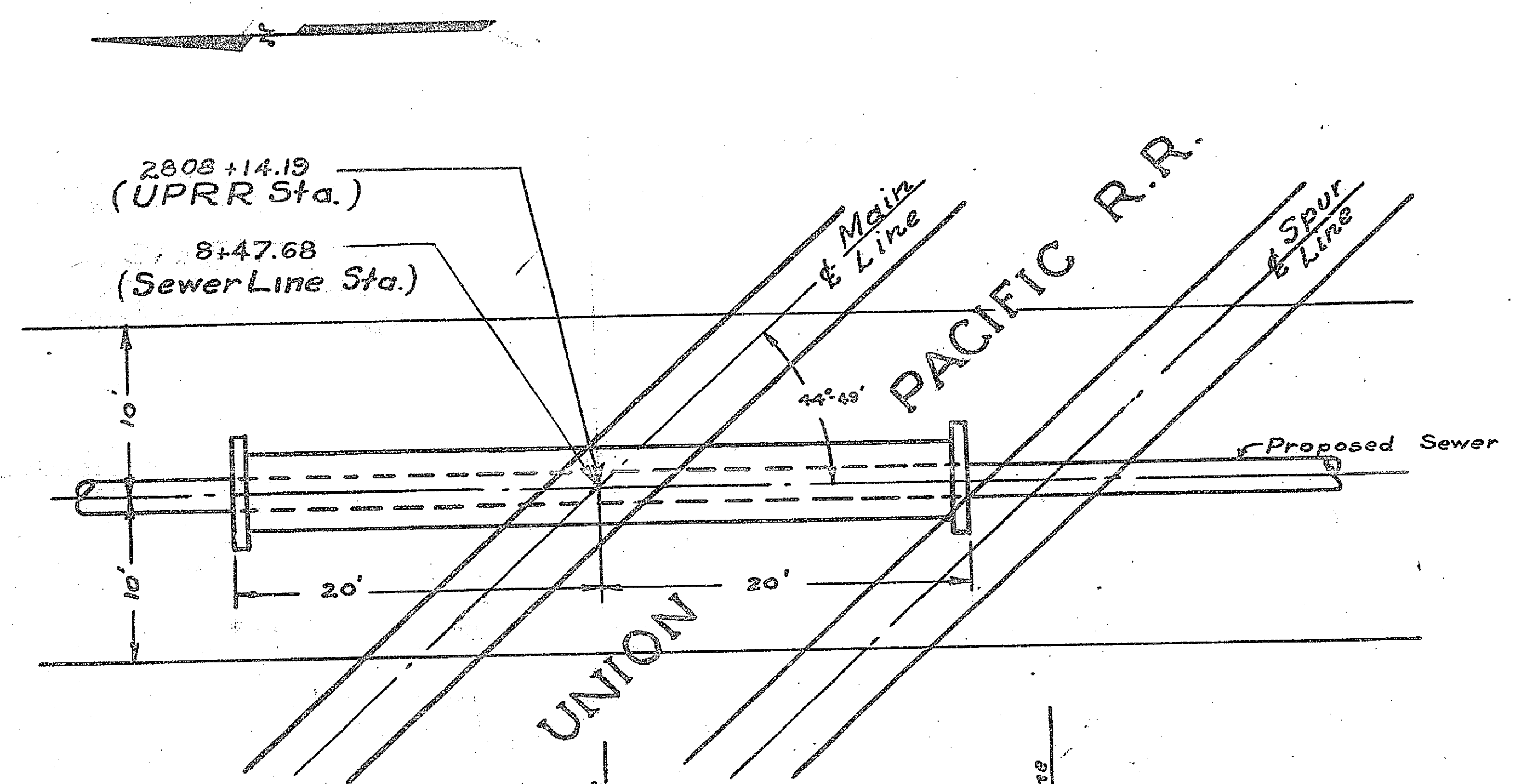
PROPOSED EXISTING



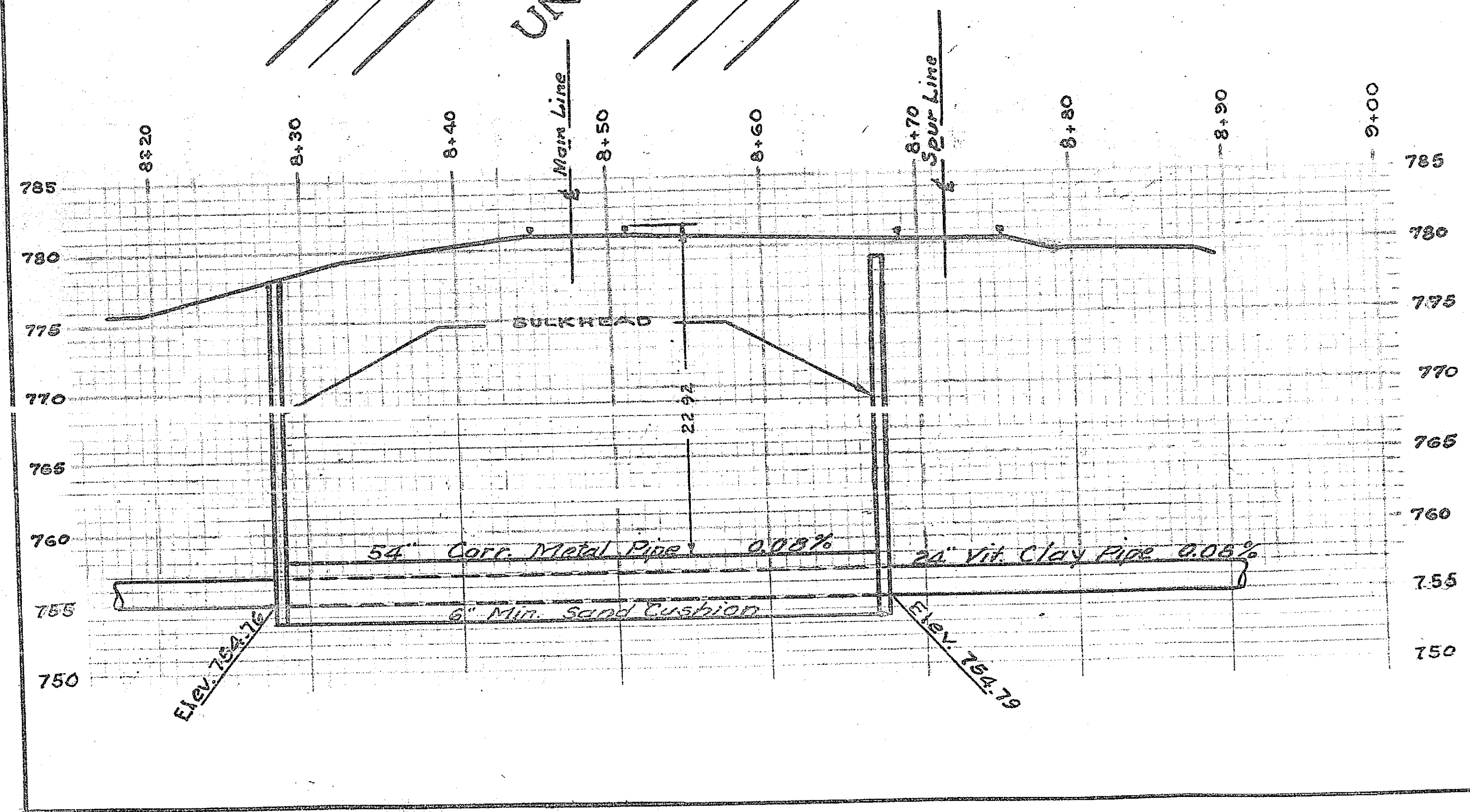
*M. B. Pipe
size shown are
correct in all cases
See detail plans
D.M. H. 1935*



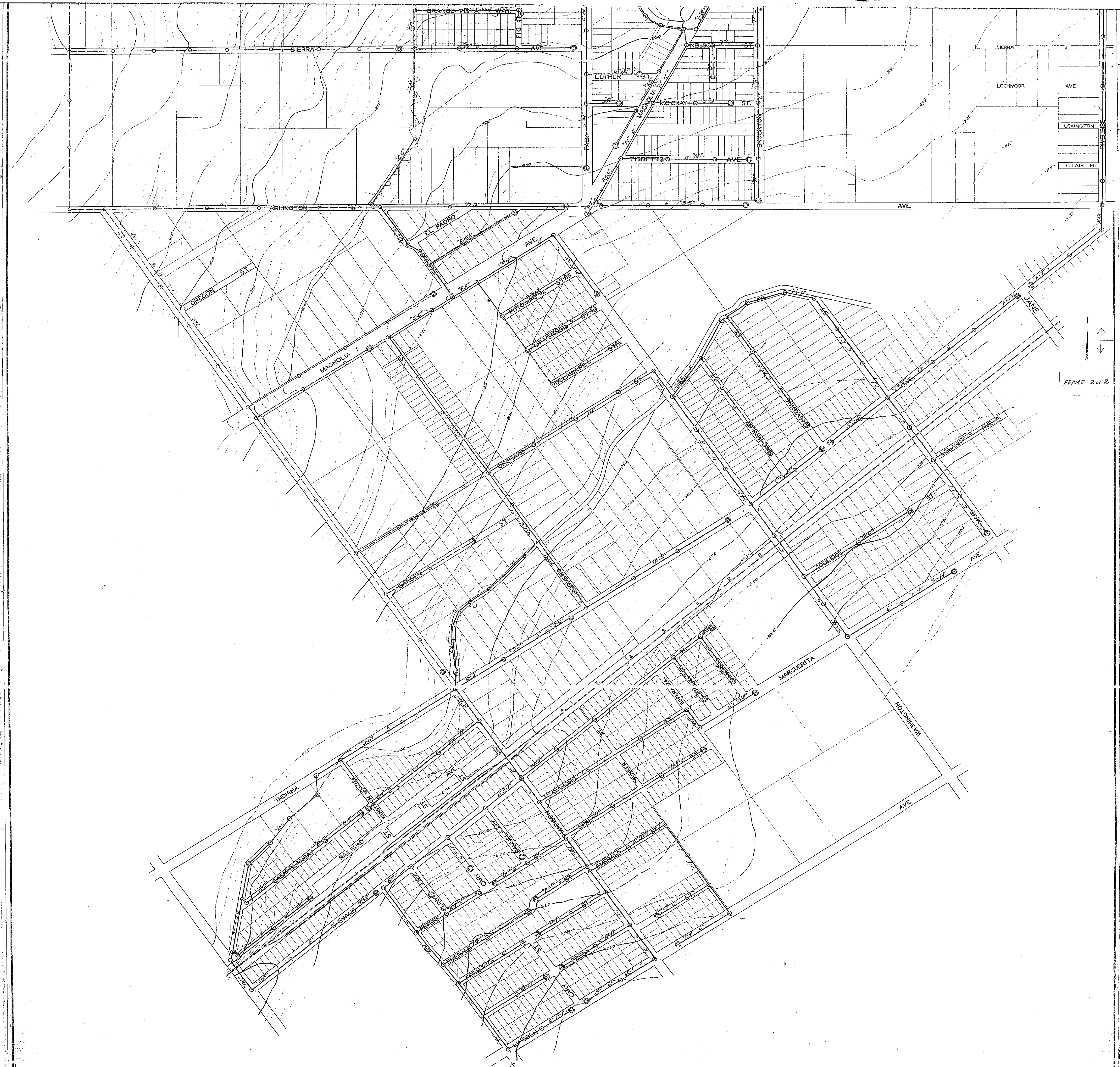
FRAME 1 of 2



DETAIL OF CROSSING
 UNDER UNION PACIFIC R.R.
 OF 24" V.C. SANITARY SEWER PIPE
 AT THE PROLONGATION OF HILLSIDE AVE.
 MAGNOLIA CENTER-CASA BLANCA
 TRUNK LINE SEWER
 REVISED FEB. 16, 1950 APPROVED CITY ENGINEER
 FB.479 PG7 SCALE 1"=10'



1151



FRAME 2 of 2