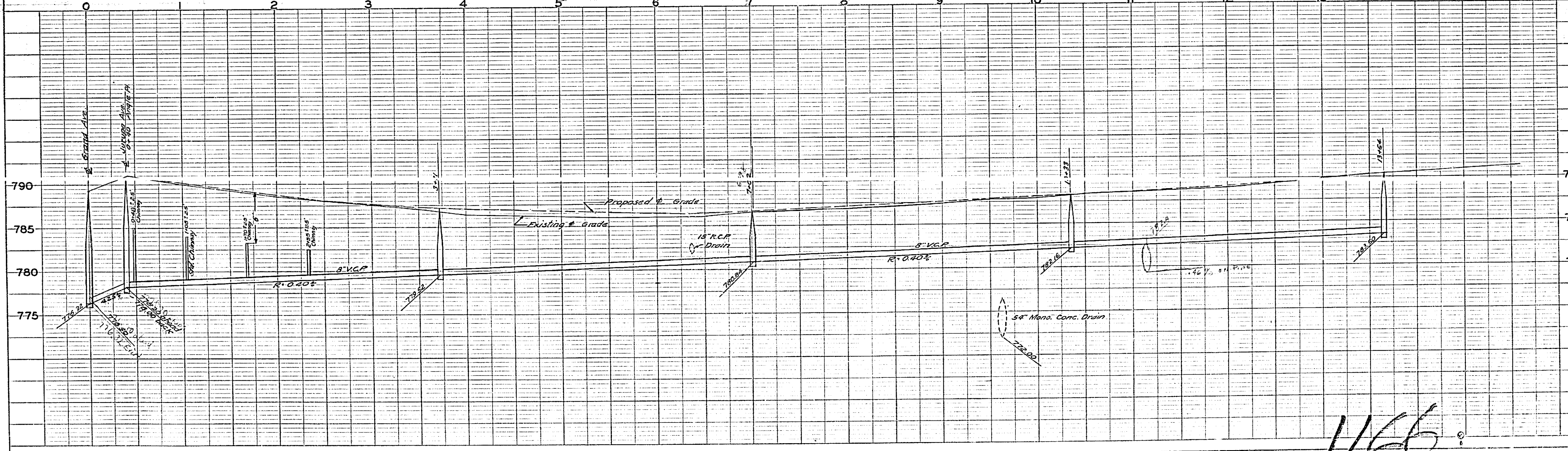
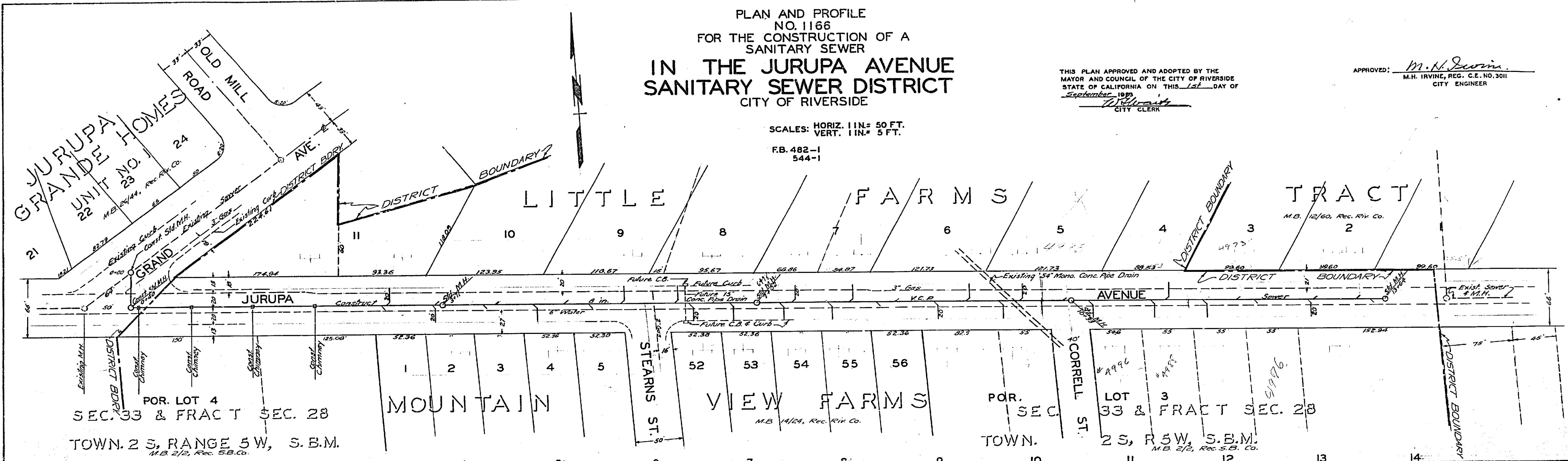


PLAN AND PROFILE
 NO. 1166
 FOR THE CONSTRUCTION OF A
 SANITARY SEWER
**IN THE JURUPA AVENUE
 SANITARY SEWER DISTRICT**
 CITY OF RIVERSIDE

THIS PLAN APPROVED AND ADOPTED BY THE
 MAYOR AND COUNCIL OF THE CITY OF RIVERSIDE
 STATE OF CALIFORNIA ON THIS 1st DAY OF
 September 1929
 City Clerk

APPROVED: *M. H. Irvine*
 M. H. IRVINE, REG. C.E. NO. 3011
 CITY ENGINEER

SCALES: HORIZ. 1 IN. = 50 FT.
 VERT. 1 IN. = 5 FT.
 F.B. 482-1
 544-1



1166

DATE	BY	REVISIONS

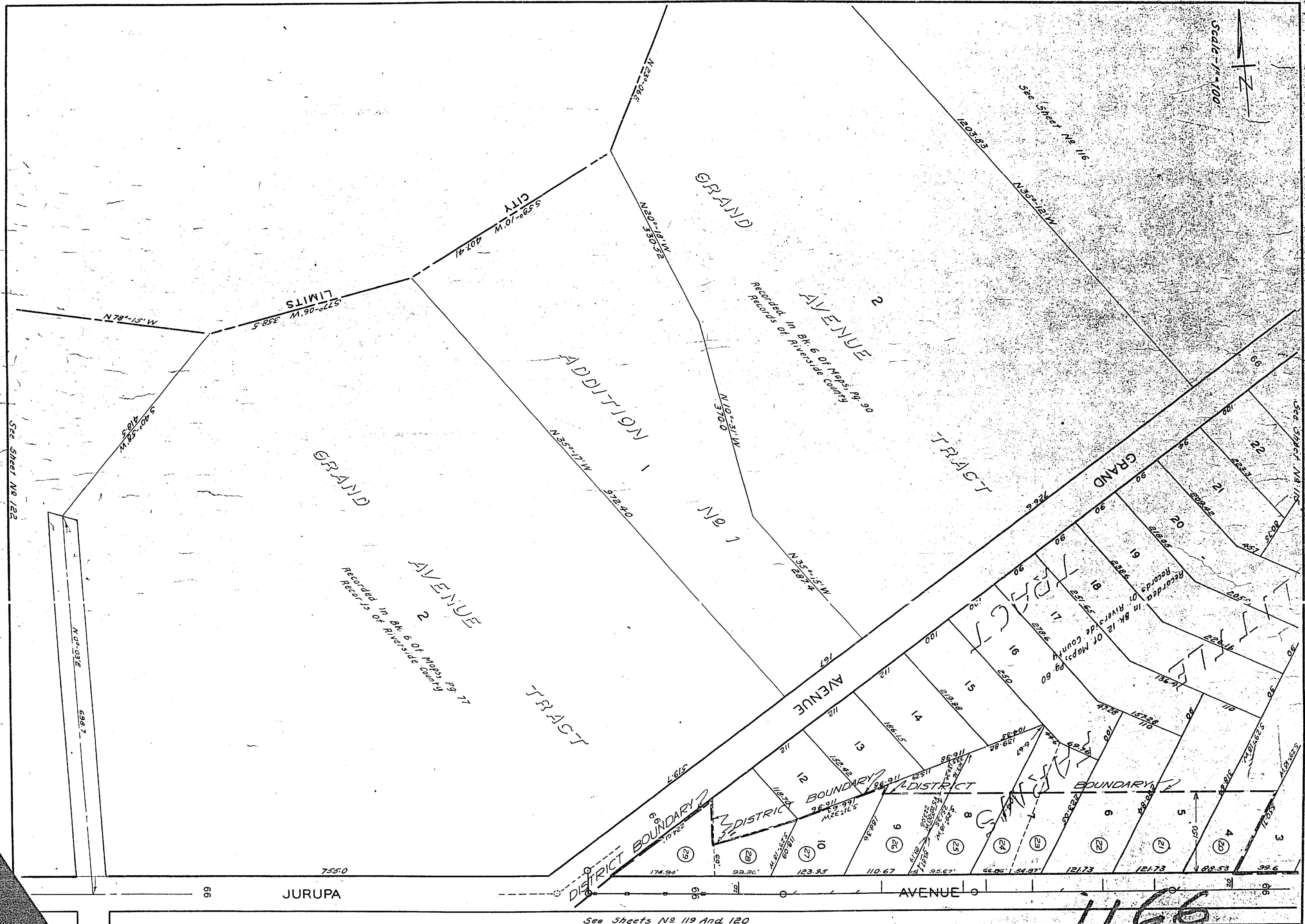
PLAN
 SUPERVISOR
 NOTE BOOK
 ALIQUANT CHECKED
 P.C. OF PLAN CHECKED
 NO.

DATE	BY	REVISIONS

PROFILE
 SUPERVISOR
 NOTE BOOK
 GRADES CHECKED
 NO.

See Map 115

Scale - 1" = 100'



See Sheet No. 116

Recorded in Bk. 6 of Maps, Pg. 90
Records of Riverside County

Recorded in Bk. 6 of Maps, Pg. 77
Records of Riverside County

Recorded in Bk. 12 of Maps, Pg. 60
Records of Riverside County

See Sheet No. 115

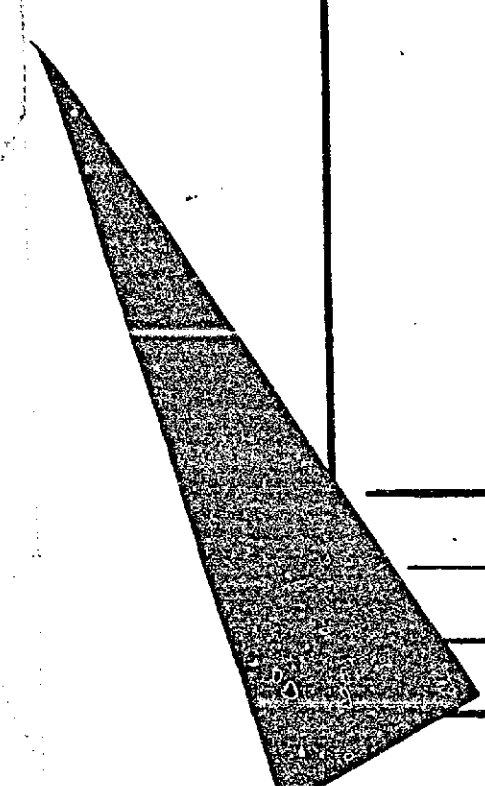
See Sheet No. 122

66

JURUPA

See Sheets No. 119 And 120

1166



ASSESSMENT NO. 385
DIAGRAM

EXHIBITING JLRUPA AVENUE SANITARY SEWER DISTRICT

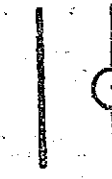




IN THE CITY OF RIVERSIDE ON WHICH WORK HAS BEEN DONE UNDER MY OFFICIAL CONTRACT AS SUPERINTENDENT OF STREETS OF SAID CITY WITH C.O. BRAND DATED DECEMBER 7, 1953

FOR THE CONSTRUCTION OF SANITARY SEWER, MANHOLES, WYE BRANCHES, HOUSE CONNECTIONS, CHIMNEYS AS IS MORE PARTICULARLY DESCRIBED IN SAID CONTRACT TO WHICH REFERENCE IS HEREBY MADE FOR FURTHER PARTICULARS; SAID DIAGRAM ALSO SHOWS THE RELATIVE LOCATION OF EACH LOT PORTION OF LOT PIECE OR PARCEL OF LAND ASSESSED FOR THE WORK DONE NUMBERED IN CIRCLES TO CORRESPOND TO THE RED INK NUMBERS IN THE ASSESSMENT

HEREIN FIGURES NEXT TO PROPERTY LINES SHOW LENGTH OF SAID LINES IN FEET. THE MARK (.) MEANS FEET. PROPERTY LINES THAT DIFFER FROM THE RECORDED SUBDIVISIONS ARE SHOWN BY BROKEN LINES. THE DISTRICT BENEFITED IS BOUNDED BY A HEAVY DASHED LINE. PROPERTY COVERED BY THIS ASSESSMENT IS SHOWN ON THE FOLLOWING RECORDED MAPS:

- LITTLE FARMS TRACT M.B. 12-60, REC. RIV. CO.
- MOUNTAIN VIEW FARMS M.B. 14-24, REC. RIV. CO.
- SEC. 33 AND FRACT. SEC 28, TOWN. 2 S, RANGE 5 W, S.B.M. M.B. 2-2, REC. RIV. CO.

HEREIN THE LEGEND OF THE DIFFERENT KINDS OF WORK PERFORMED IS SHOWN AS FOLLOWS:

- SANITARY SEWER 
- STD MANHOLE 
- WYE BRANCH 
- HOUSE CONNECTION 
- STD. CHIMNEY 

CITY ENGINEER OF THE CITY OF RIVERSIDE THE FOLLOWING IS A STATEMENT OF AMOUNTS OF DIFFERENT KINDS OF WORK DONE BY

C.O. BRAND UNDER CONTRACT DATED DECEMBER 7, 1953, PURSUANT TO RESOLUTION OF INTENTION NO. 5942 ADOPTED BY THE CITY COUNCIL OF THE CITY OF RIVERSIDE ON THE 1ST DAY OF SEPTEMBER 1953

8" V.C.P. SEWER	1365.80 LIN. FT.
STD. MANHOLES	6
6x4" WYE BRANCHES	34
4" HOUSE CONNECTION	400.00 LIN. FT.
STD. CHIMNEYS	18.00 LIN. FT.

AT SAID CITY OF RIVERSIDE THIS _____ DAY OF _____

CITY ENGINEER OF THE CITY OF RIVERSIDE

CITY ENGINEER OF THE CITY OF RIVERSIDE

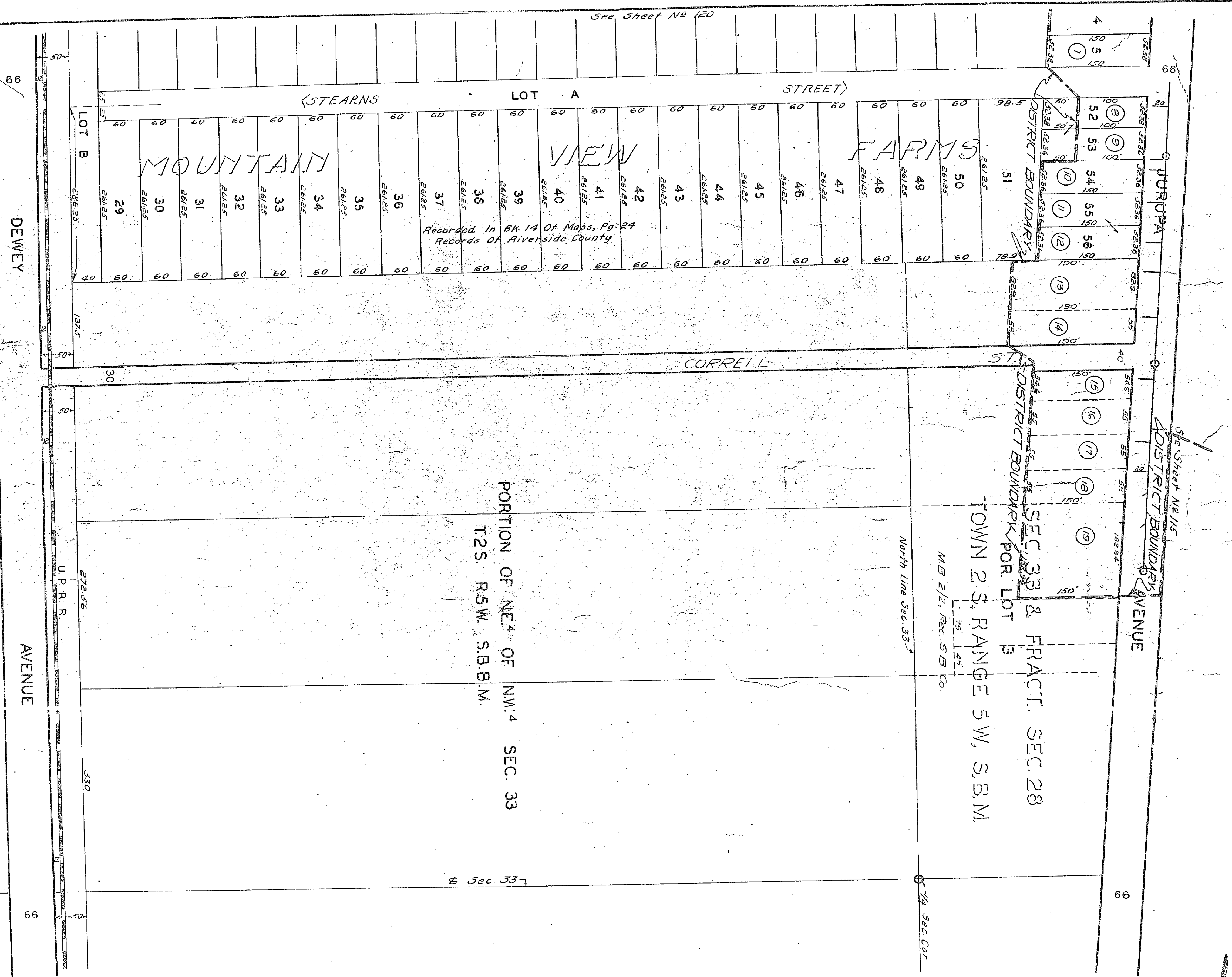
I HEREBY CERTIFY THAT THE ABOVE WORK WAS DONE IN ACCORDANCE WITH LINES AND GRADES FURNISHED BY ME AND THAT THE DIAGRAM OF THE ASSESSMENT DISTRICT FOR THE SAME IS CORRECT.

RECORDED AT 3:00 O'CLOCK P.M. THIS 17TH DAY OF MARCH 1954

SUPERINTENDENT OF STREETS OF THE CITY OF RIVERSIDE

1166

Scale - 1" = 100'



Recorded in BK. 14 Of Maps, Pg. 24
Records Of Riverside County

PORTION OF NE 1/4 OF NW 1/4 SEC. 33
T.2S. R.5W. S.B.M.

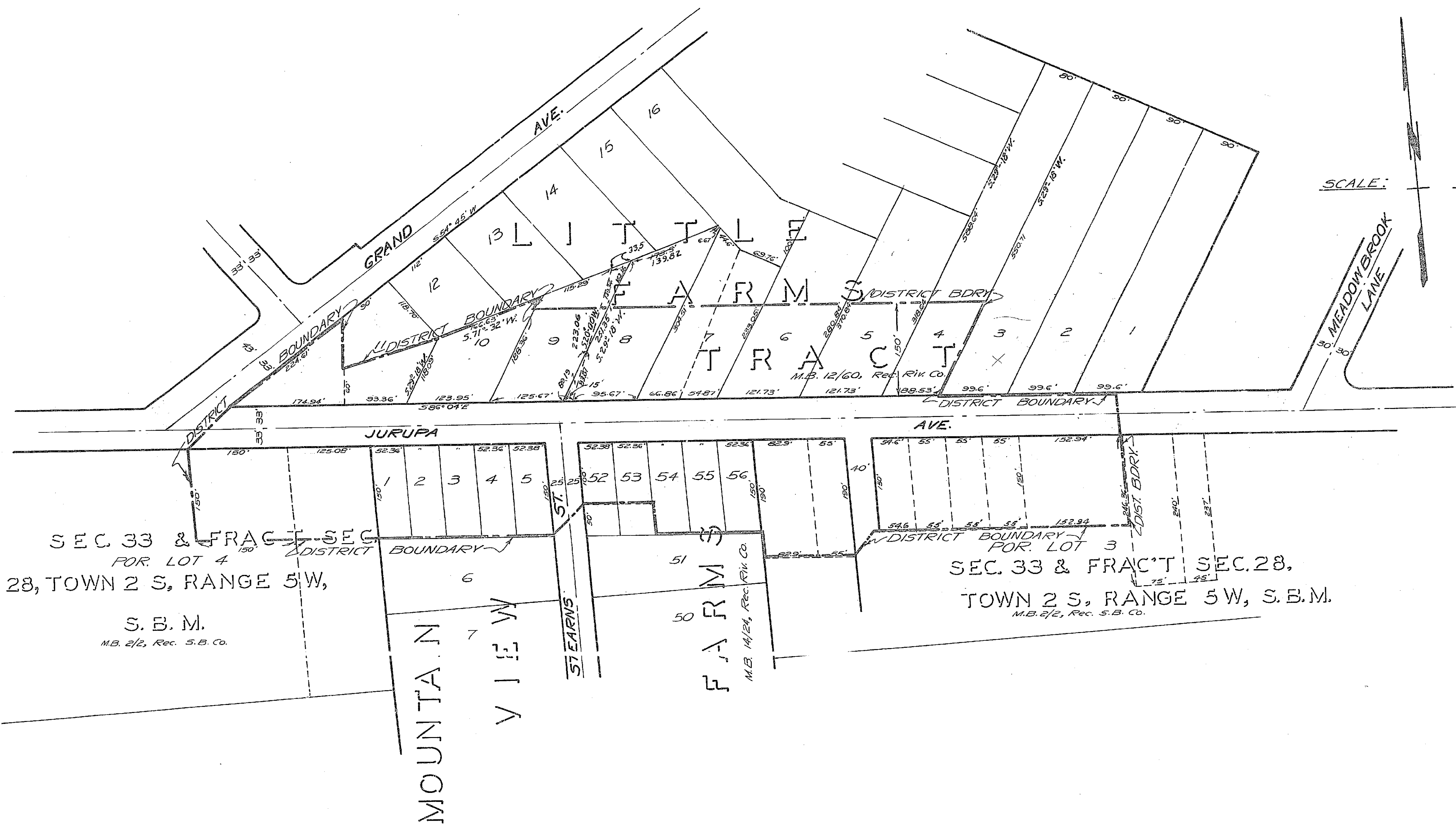
SEC. 33 & FRACT. SEC. 28
TOWN 2 S, RANGE 5 W, S.B.M.

See Sheet No 120

See Sheet No 151

See Sheet No 118

1166



PLAN NO 1166-A
 SHOWING THE LANDS INCLUDED
 WITHIN THE ASSESSMENT DISTRICT
 TO BE BENEFITED BY THE CONSTRUCTION
 OF A SANITARY SEWER IN THE
 MATTER OF

**JURUPA AVENUE
 SANITARY SEWER DISTRICT**

RIVERSIDE CALIFORNIA

SCALE: 1" = 100'

APPROVED *M.H. Irvine*
 M. H. IRVINE, REG. C. E. NO. 3011
 CITY ENGINEER

THIS PLAN APPROVED AND ADOPTED BY THE
 MAYOR AND COUNCIL OF THE CITY OF RIVERSIDE,
 STATE OF CALIFORNIA, ON THIS 15th DAY OF
September 1933

D. Swartz
 CITY CLERK

DISTRICT BOUNDARY SHOWN THUS ————

1166