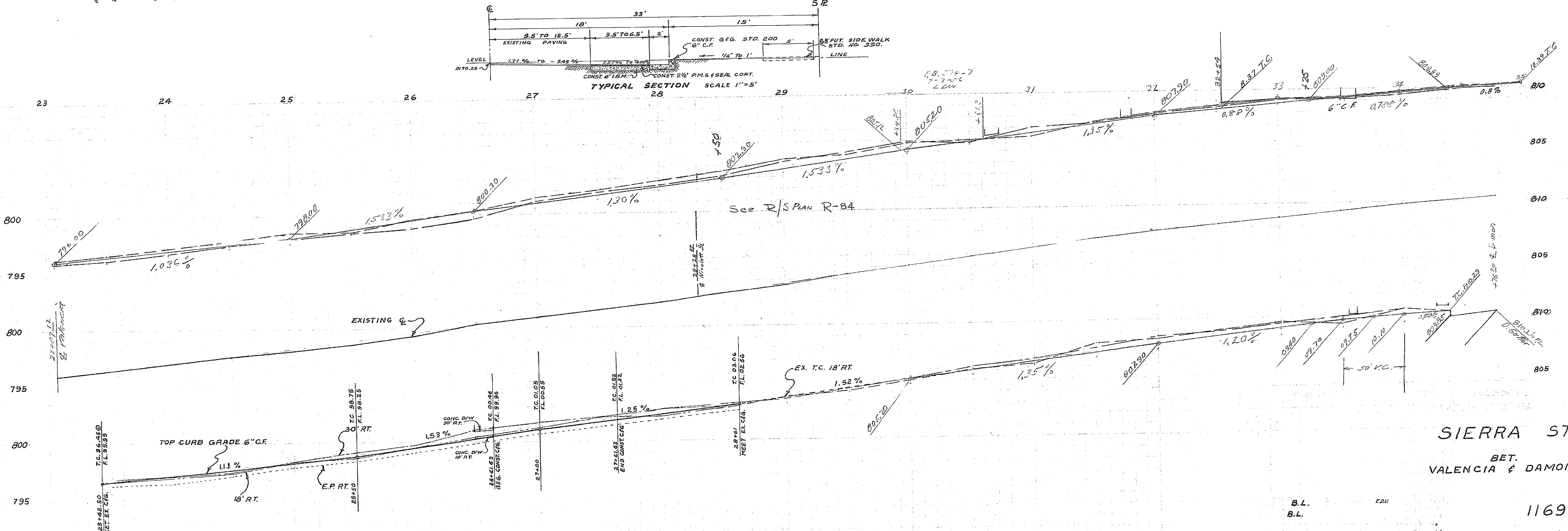
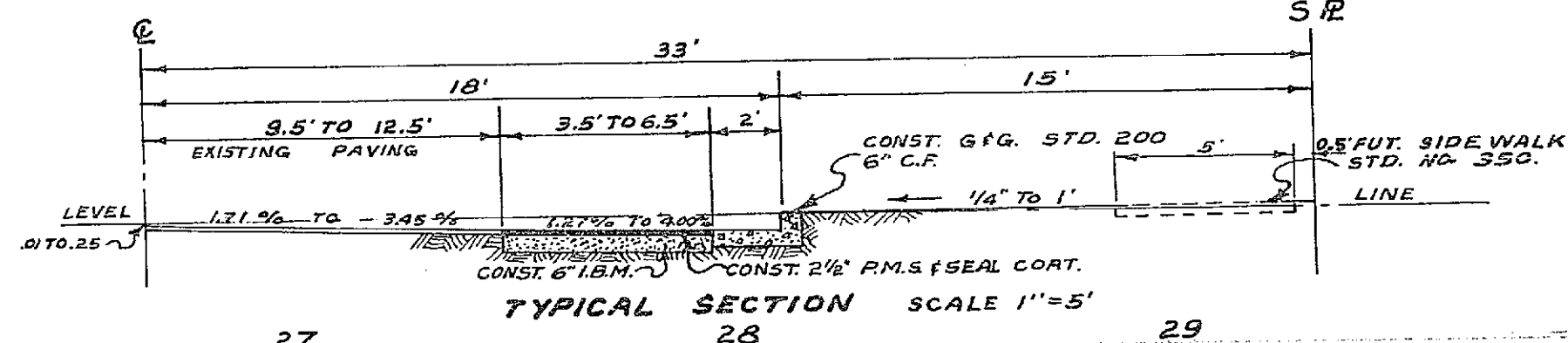
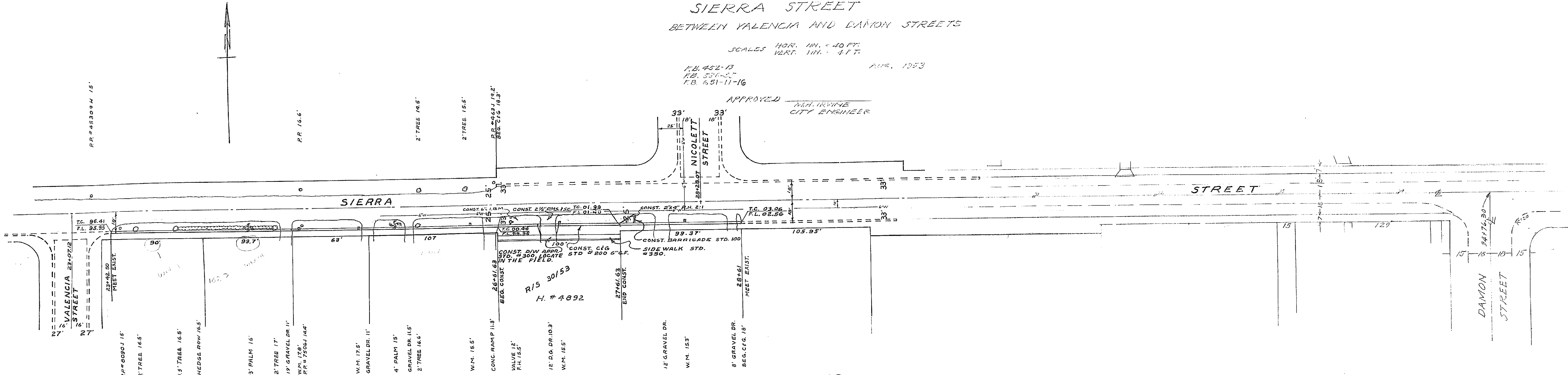


PLAN AND PROFILE NO. 1169-A  
 SHOWING PROPOSED CURB GRADES ON  
 SIERRA STREET  
 BETWEEN VALENCIA AND DAMON STREETS

SCALES HOR. 1" = 40 FT.  
 VERT. 1" = 4 FT.

R.B. 452-13  
 R.B. 536-55  
 R.B. 651-11-16  
 AUG. 1953

APPROVED  
 W.H. IRVINE  
 CITY ENGINEER



SIERRA ST.  
 BET.  
 VALENCIA & DAMON ST.

B.L.  
 B.L.  
 1169-A