

SCALES: HORIZ. 1"=50'
VERT. 1"=5'

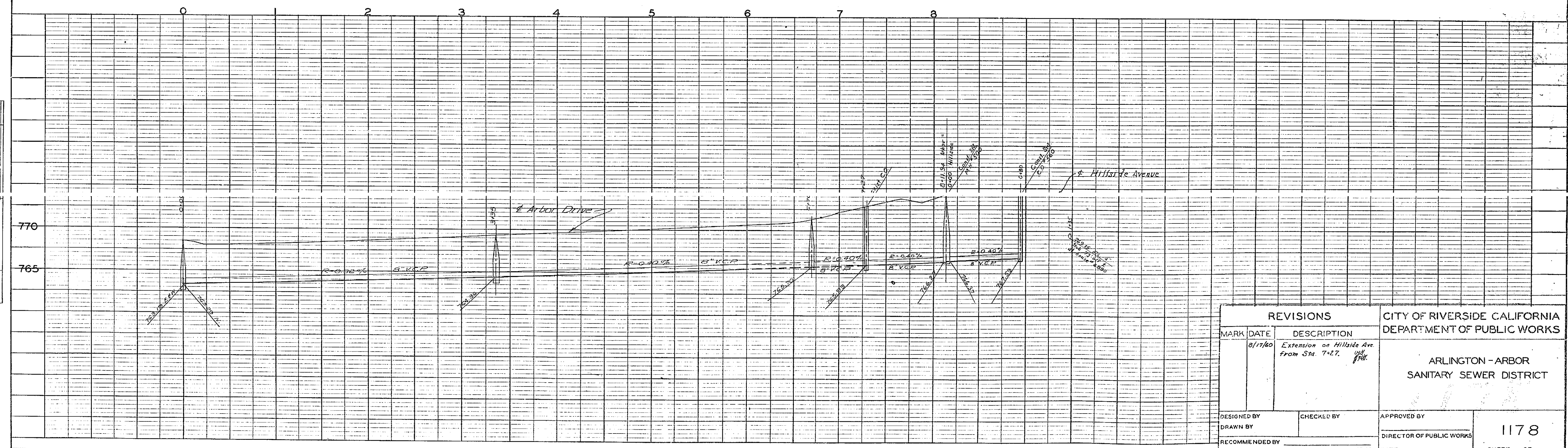
PLAN AND PROFILE
NO. 1186
FOR THE CONSTRUCTION OF
SANITARY SEWERS IN THE
ARLINGTON-ARBOR
SANITARY SEWER DISTRICT
RIVERSIDE, CALIFORNIA

THESE PLANS APPROVED AND ADOPTED BY THE
MAYOR AND COUNCIL OF THE CITY OF RIVERSIDE,
STATE OF CALIFORNIA, ON THIS _____ DAY OF
195

APPROVED: *M. H. Irvine*
M. H. IRVINE, REG. C.E. NO. 3011
CITY ENGINEER

CITY CLERK

FB. 542



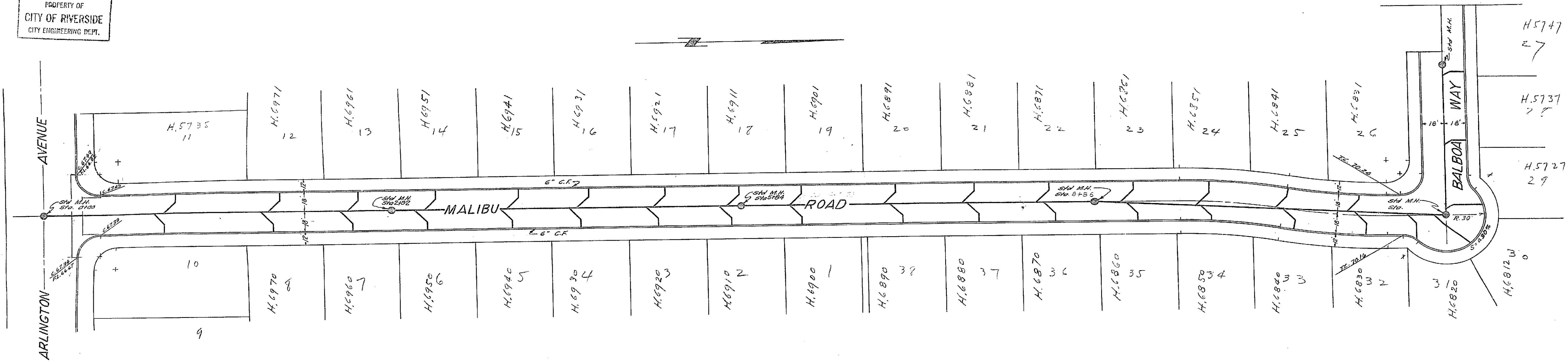
REVISIONS			CITY OF RIVERSIDE CALIFORNIA DEPARTMENT OF PUBLIC WORKS	
MARK	DATE	DESCRIPTION		
	8/17/60	Extension on Hillside Ave from Sta. 7+27.00 to 7+27.00		
DESIGNED BY			CHECKED BY	APPROVED BY
DRAWN BY			DIRECTOR OF PUBLIC WORKS	1178
RECOMMENDED BY			ASSISTANT CITY ENGINEER	DATE
				SHEET OF

DATE	
BY	
PLAN	
NO.	
DATE	
BY	
PROFILE	
NO.	

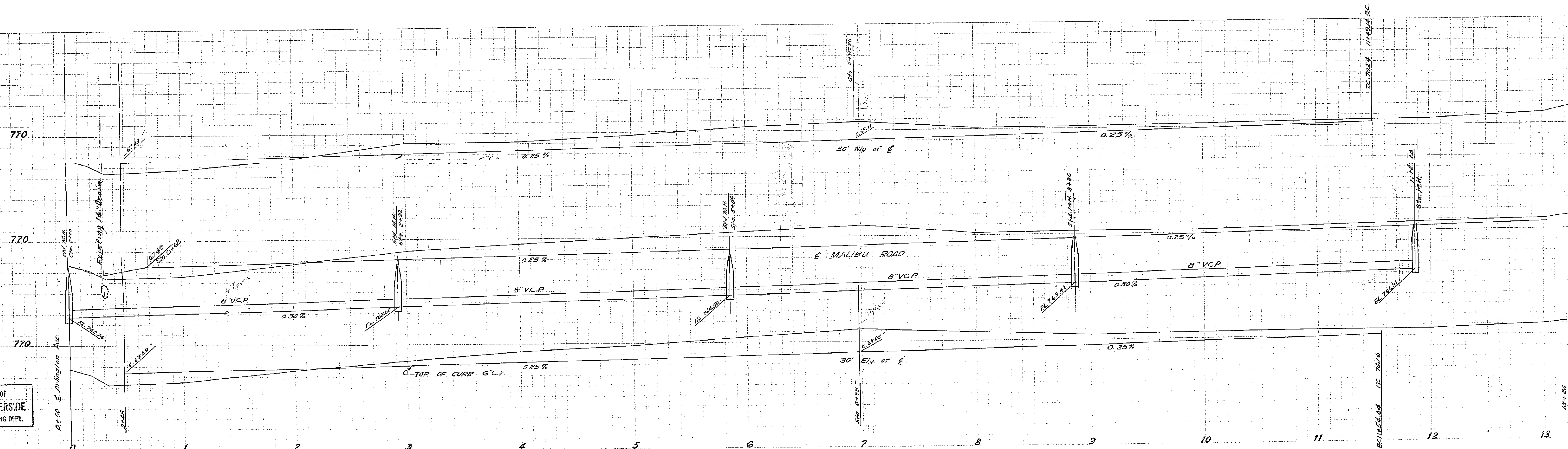
DATE	
BY	
PROFILE	
NO.	

PROPERTY OF
CITY OF RIVERSIDE
CITY ENGINEERING DEPT.

PROPERTY OF
CITY OF RIVERSIDE
CITY ENGINEERING DEPT.



Sheet 3 of 3



APPROVED *J.F. Davidson*
CITY ENGINEER

PROPERTY OF
CITY OF RIVERSIDE
CITY ENGINEERING DEPT.

PLAN AND PROFILE
MALIBU ROAD
AUSTIN SUBDIVISION
December, 1952 J.F. Davidson, C.E.

Scale: Hor. 1"=40'
Vert. 1"=4'

FB. 442-46

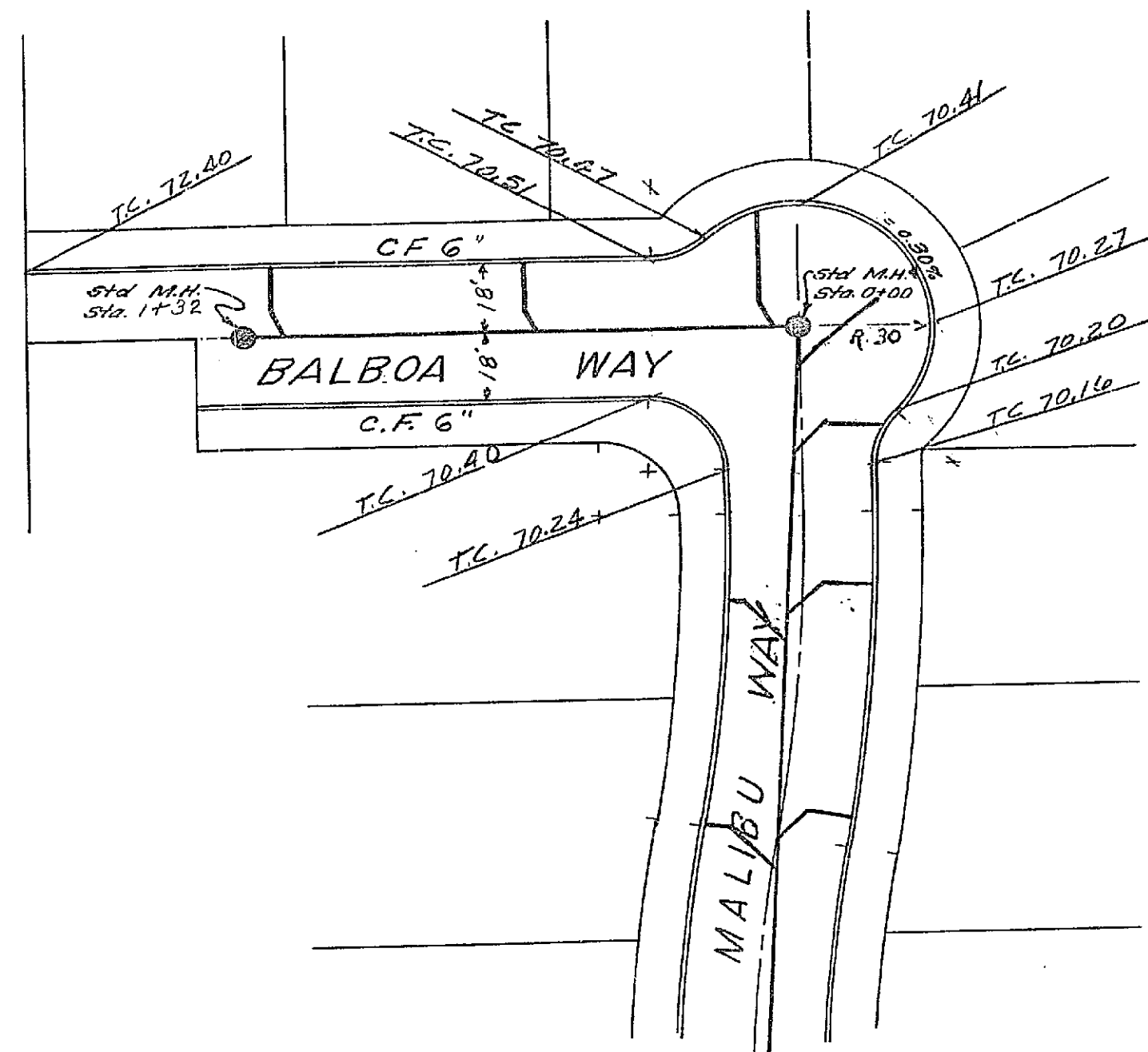
PROPERTY OF
CITY OF RIVERSIDE
CITY ENGINEERING DEPT.

A 1/4" = 1' SCALE
TO BE USED IN CONNECTION WITH THIS PLAN

A 1/4" = 1' SCALE
TO BE USED IN CONNECTION WITH THIS PLAN

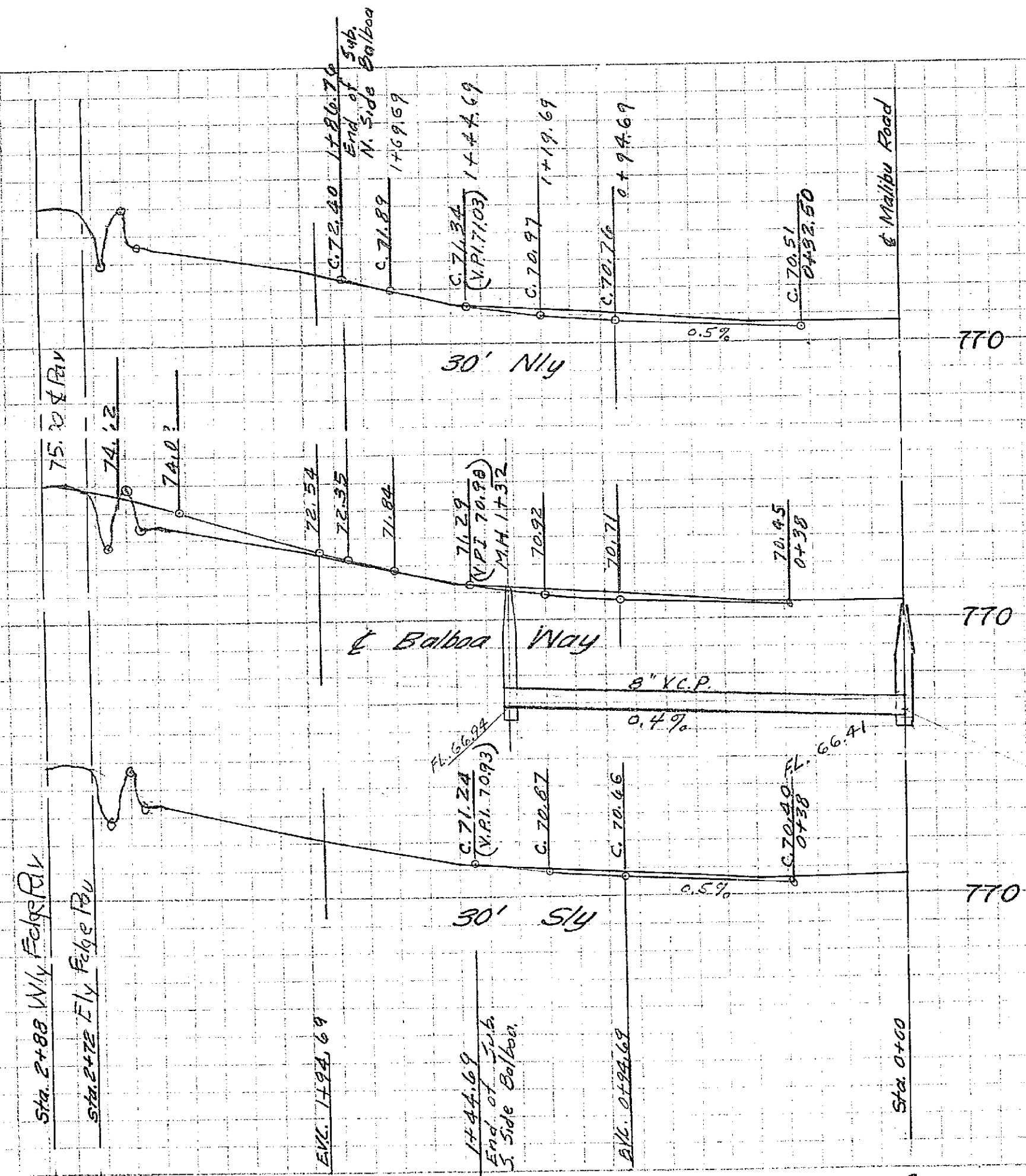
A 1/4" = 1' SCALE
TO BE USED IN CONNECTION WITH THIS PLAN

PROPERTY OF
CITY OF RIVERSIDE
CITY ENGINEERING DEPT.



PROPERTY OF
CITY OF RIVERSIDE
CITY ENGINEERING DEPT.

Sheet 1 of 3 Sheets



APPROVED *M.H. Irvine*
CITY ENGINEER

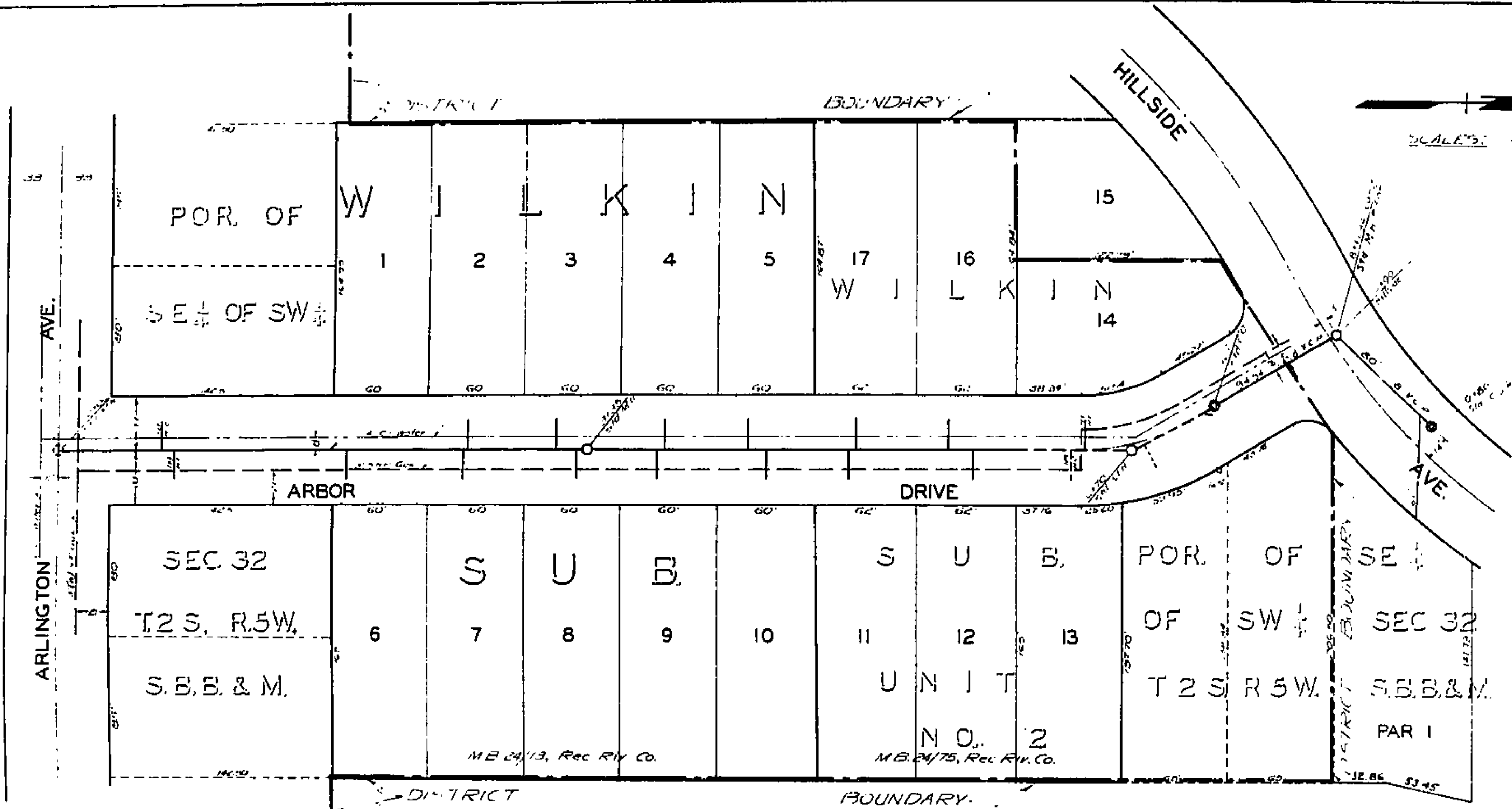
PROPERTY OF
CITY OF RIVERSIDE
CITY ENGINEERING DEPT.

PLAN AND PROFILE
BALBOA WAY
AUSTIN SUBDIVISION
January, 1953 J.F. DAVIDSON, C.E.
Scale Hor. 1"=40'
Vert. 1"=4'

PROPERTY OF
CITY OF RIVERSIDE
CITY ENGINEERING DEPT.

1178

MADE IN U.S.A.
CLEARING LAMP CO.
PHOTOGRAPHIC REPRODUCTION



PLAN AND PROFILE
 NO. 1186
 FOR THE CONSTRUCTION OF
 SANITARY SEWERS IN THE
ARLINGTON-ARBOR
SANITARY SEWER DISTRICT
 RIVERSIDE, CALIFORNIA

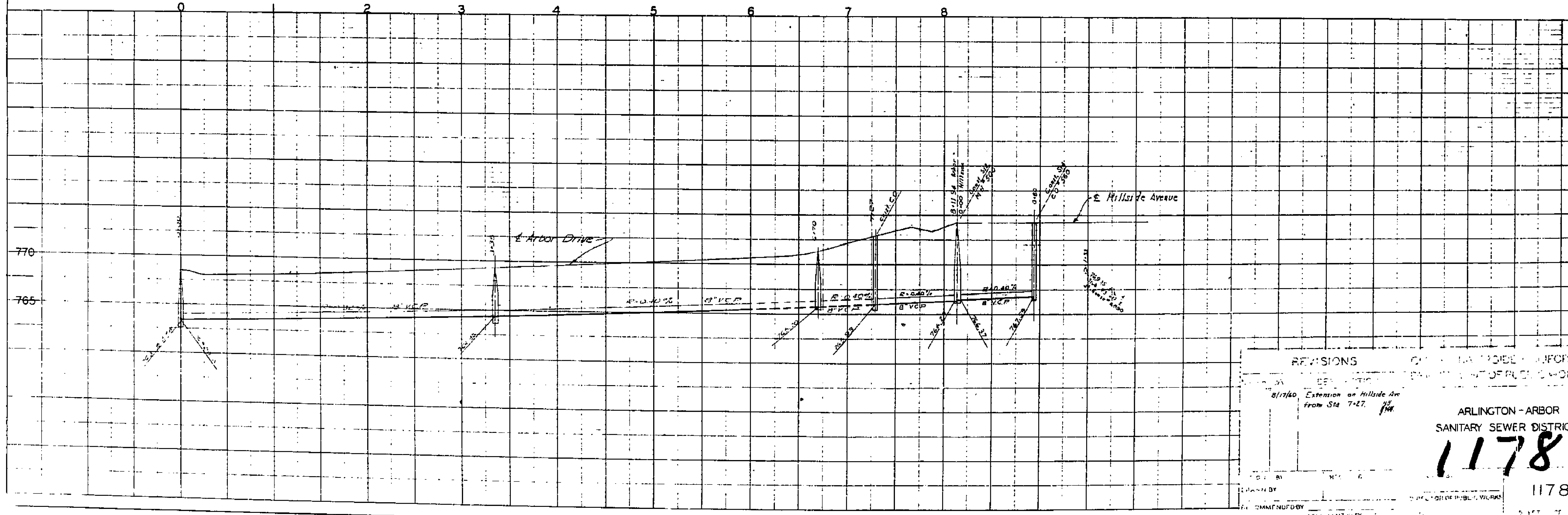
THESE PLANS APPROVED AND ADOPTED BY THE
 MAYOR AND COUNCIL OF THE CITY OF RIVERSIDE,
 STATE OF CALIFORNIA, ON THIS _____ DAY OF
 _____ 195

APPROVED: *M.H. Irvine*
 M.H. IRVINE, REG. C.E. NO. 3011
 CITY ENGINEER

CITY CLERK

NOTE: LAY WYES NEARLY LEVEL

FEB 542



REVISIONS	DATE	BY	DESCRIPTION
8/17/60			Extension on Hillside Ave from Sta 7+27.

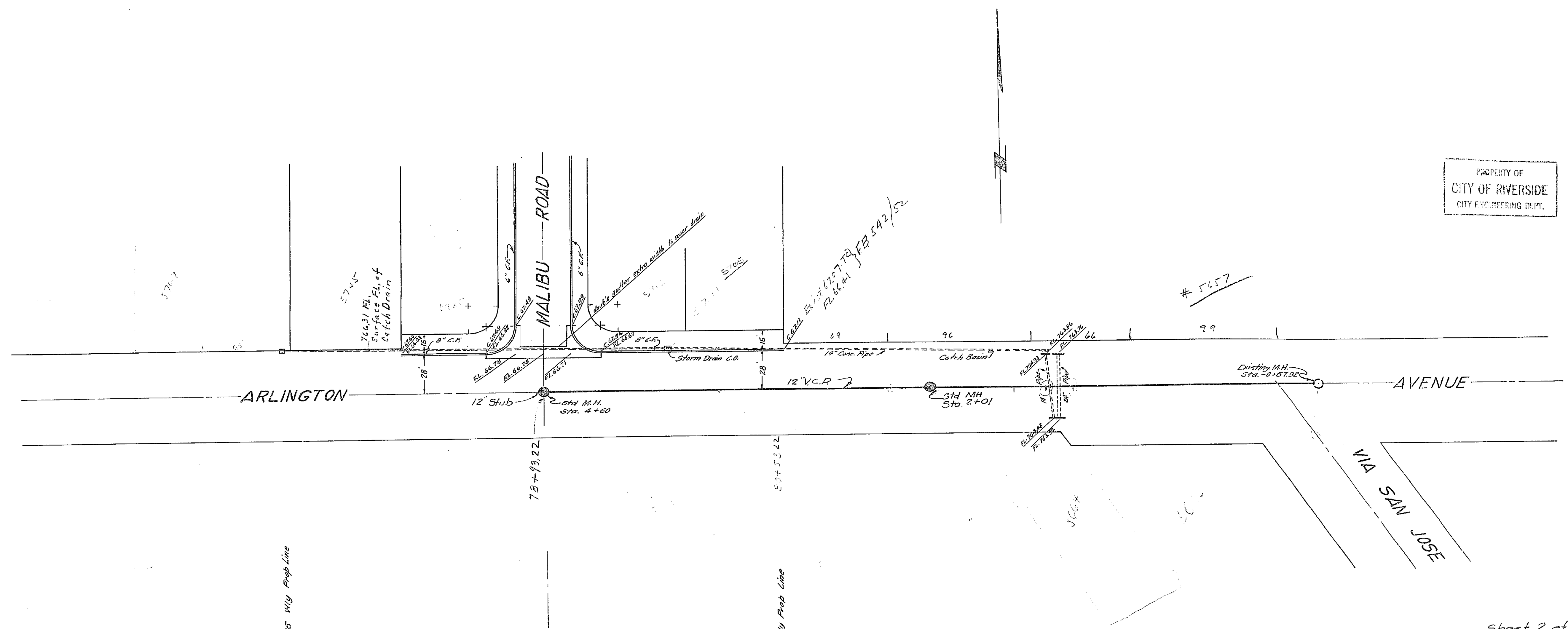
ARLINGTON-ARBOR
 SANITARY SEWER DISTRICT

1178

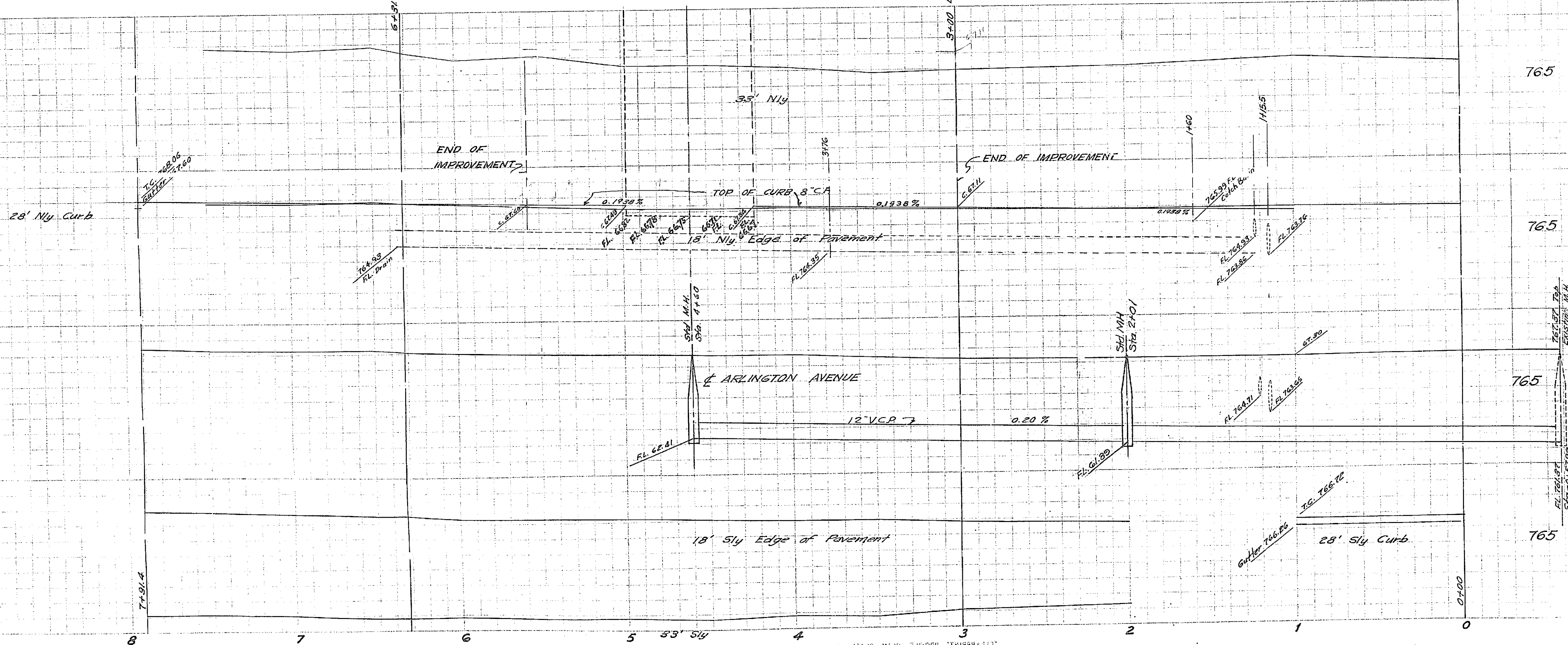
1178

PROPERTY OF
CITY OF RIVERSIDE
CITY ENGINEERING DEPT.

PROPERTY OF
CITY OF RIVERSIDE
CITY ENGINEERING DEPT.



Sheet 2 of 3 Sheets



APPROVED *M.H. Dwyer*
CITY ENGINEER

PROPERTY OF
CITY OF RIVERSIDE
CITY ENGINEERING DEPT.

PLAN AND PROFILE
ARLINGTON AVENUE
AUSTIN SUBDIVISION

December 1952 J.F. Davidson, C.E.
Scale: Hor. 1" = 40'
Vert. 1" = 4'

FB. 442-16
1178

PROPERTY OF
CITY OF RIVERSIDE
CITY ENGINEERING DEPT.

PROPERTY OF
CITY OF RIVERSIDE
CITY ENGINEERING DEPT.