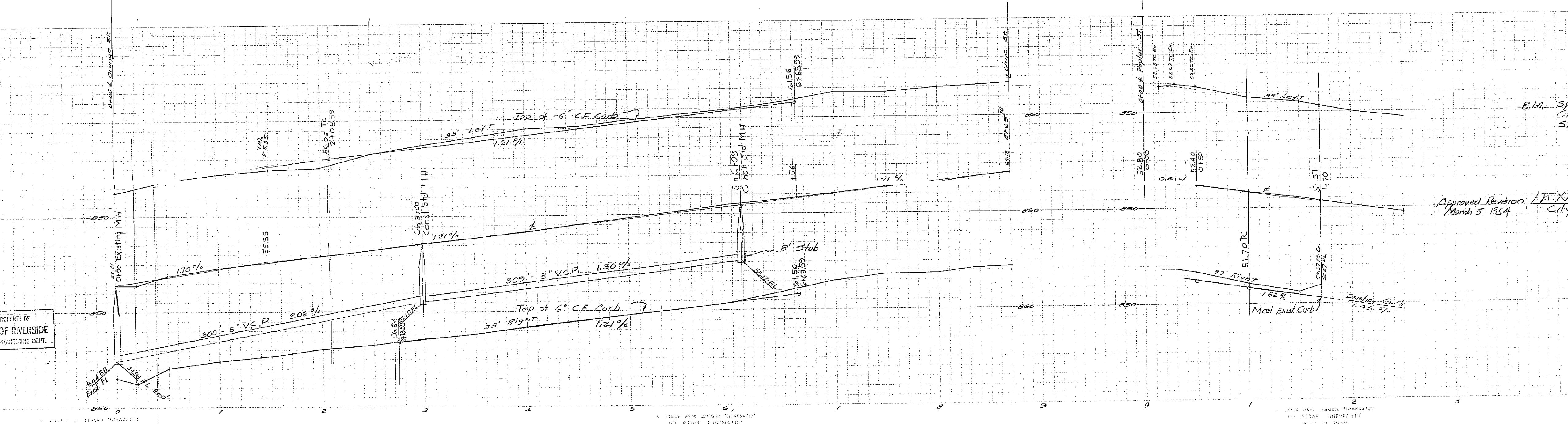
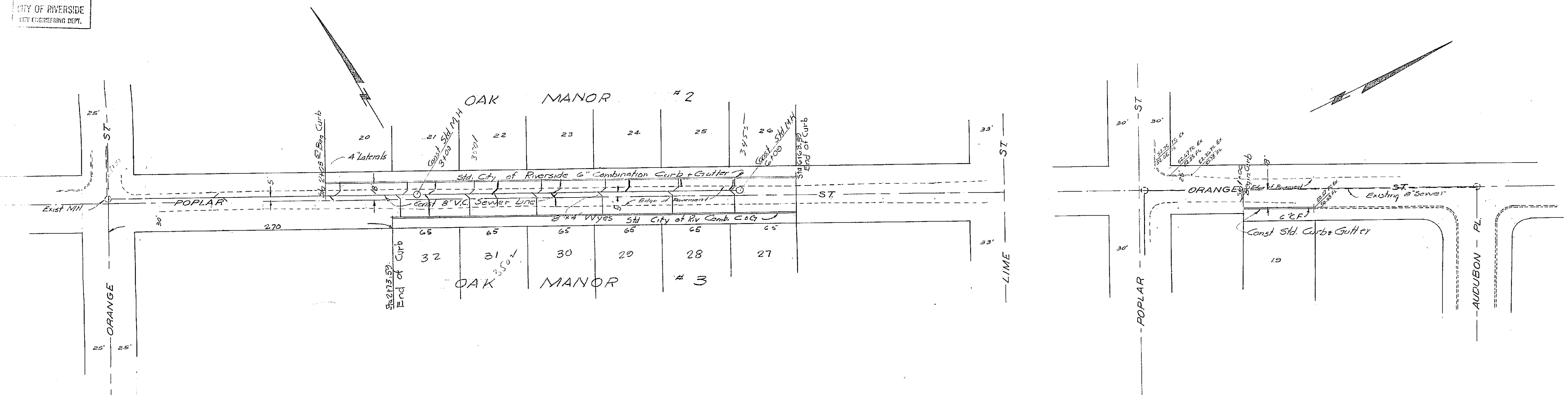


PROPERTY OF
CITY OF RIVERSIDE
CITY ENGINEERING DEPT.

PROPERTY OF
CITY OF RIVERSIDE
CITY ENGINEERING DEPT.



B.M. Spike in lead Why Curb
Orange N.Y. Pl. of Poplar
Street El. 852.73

Approved Revision *M.H. Irvine*
March 5 1954 City Engineer

Approved *M.H. Irvine*
City Engineer

PROPERTY OF
CITY OF RIVERSIDE
CITY ENGINEERING DEPT.

PLAN & PROFILE
OAK MANOR TRACT
UNIT NO. 2

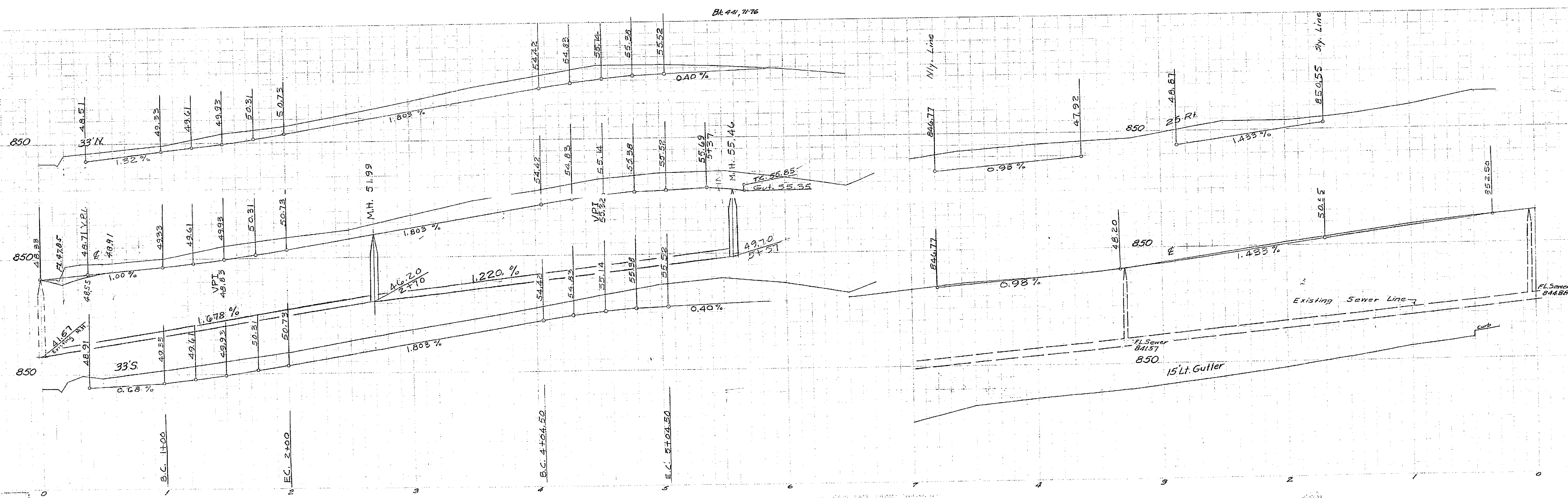
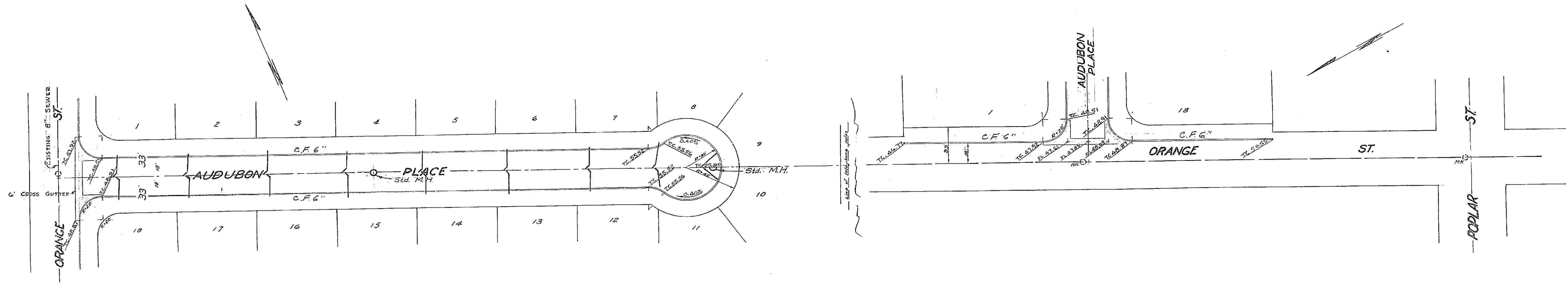
POPLAR ST. ~ ORANGE ST.
NOVEMBER 1953 J.R. DAVIDSON, C.E.

SCALE Vertical - 1"=4'
Horizontal - 1"=40'

7179

PROPERTY OF
CITY OF RIVERSIDE
CITY ENGINEERING DEPT.

PROPERTY OF
CITY OF RIVERSIDE
CITY ENGINEERING DEPT.



Approved *M.H. Durkin*
City Engineer

PLAN & PROFILE
AUDUBON PLACE
OAK MANOR TRACT
MARCH 1953 J.F. DAVIDSON C.E.

SCALE
HOR 1" = 40'
VERT 1" = 4'

PROPERTY OF
CITY OF RIVERSIDE
CITY ENGINEERING DEPT.

PROPERTY OF
CITY OF RIVERSIDE
CITY ENGINEERING DEPT.

1119