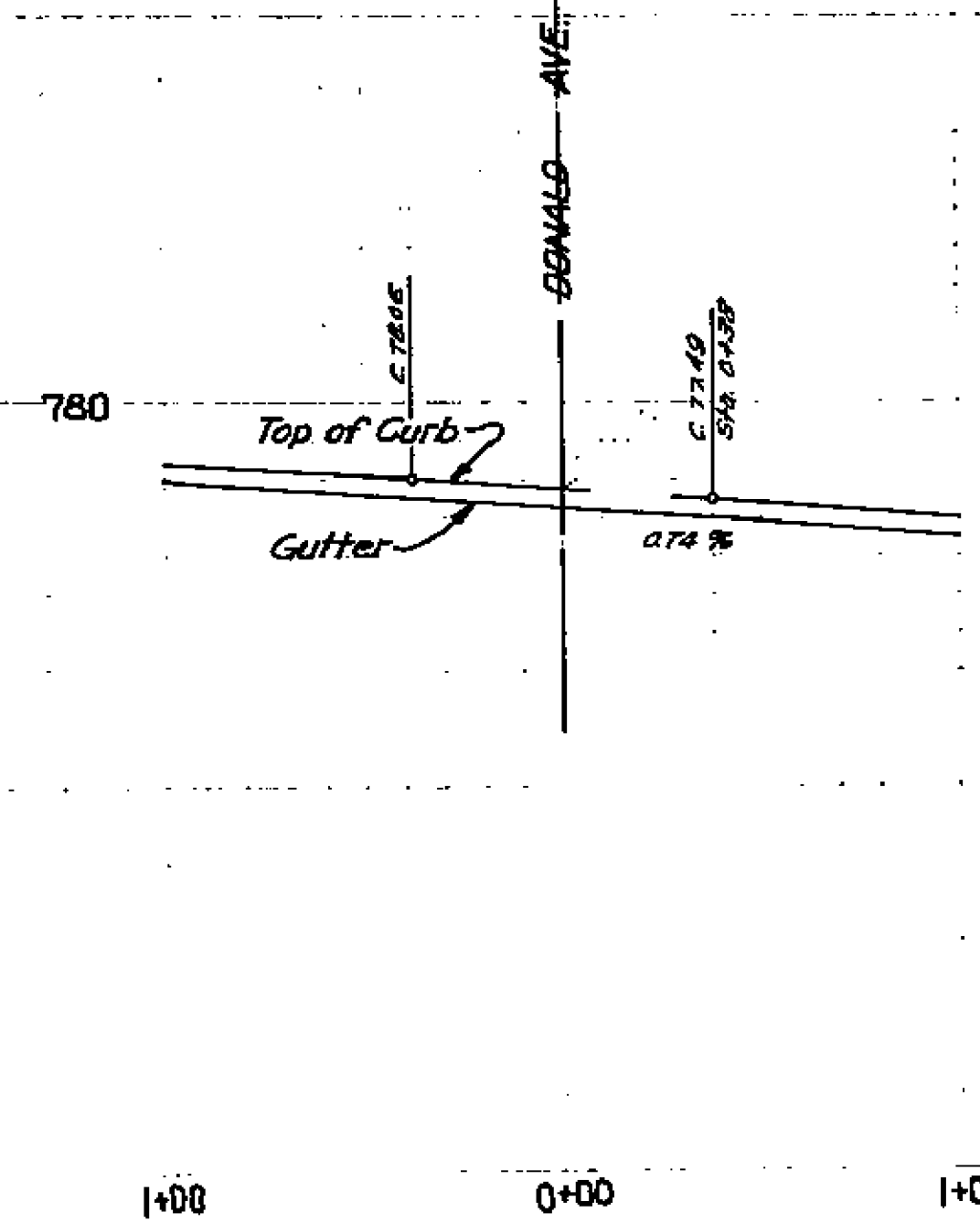
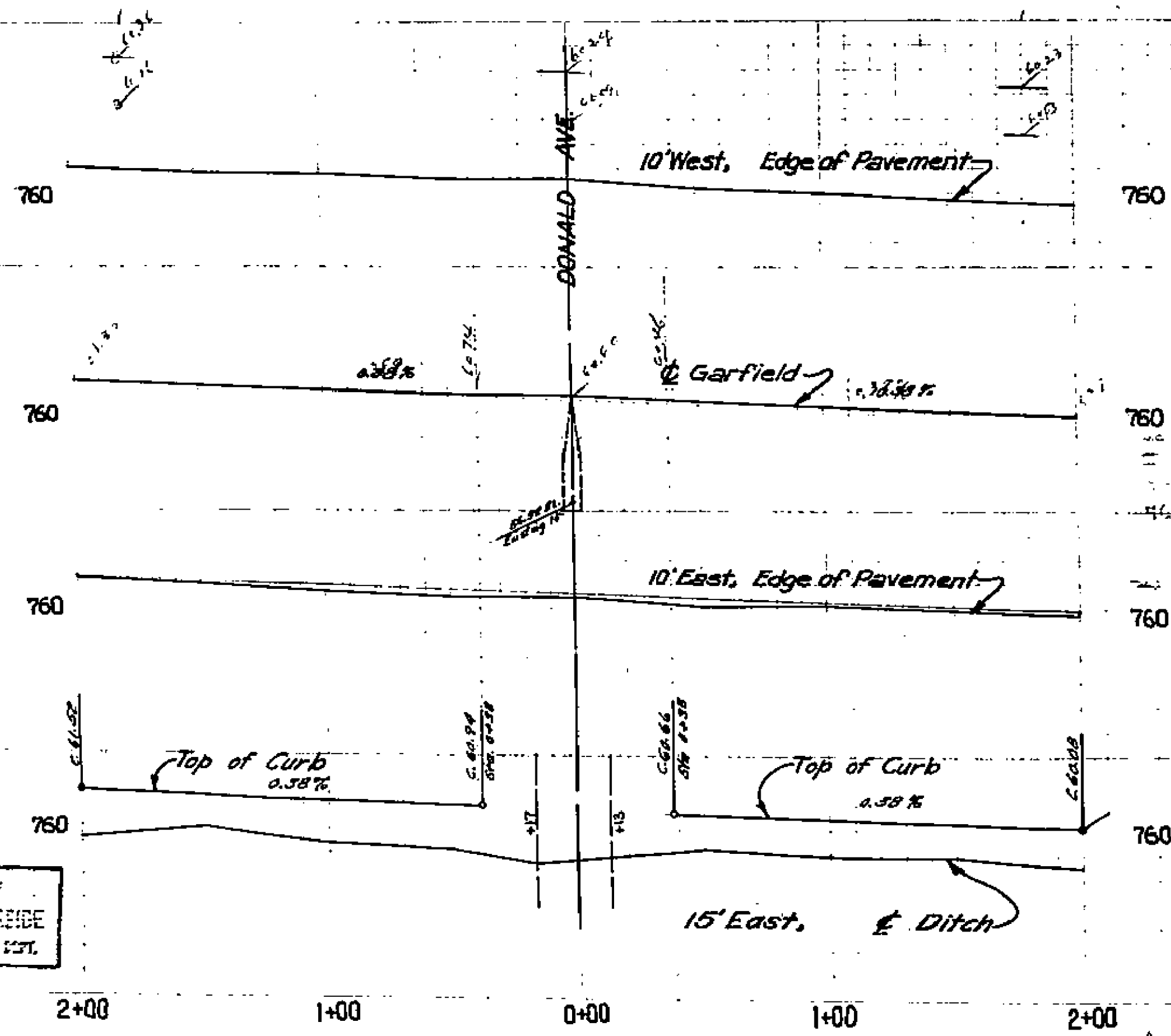
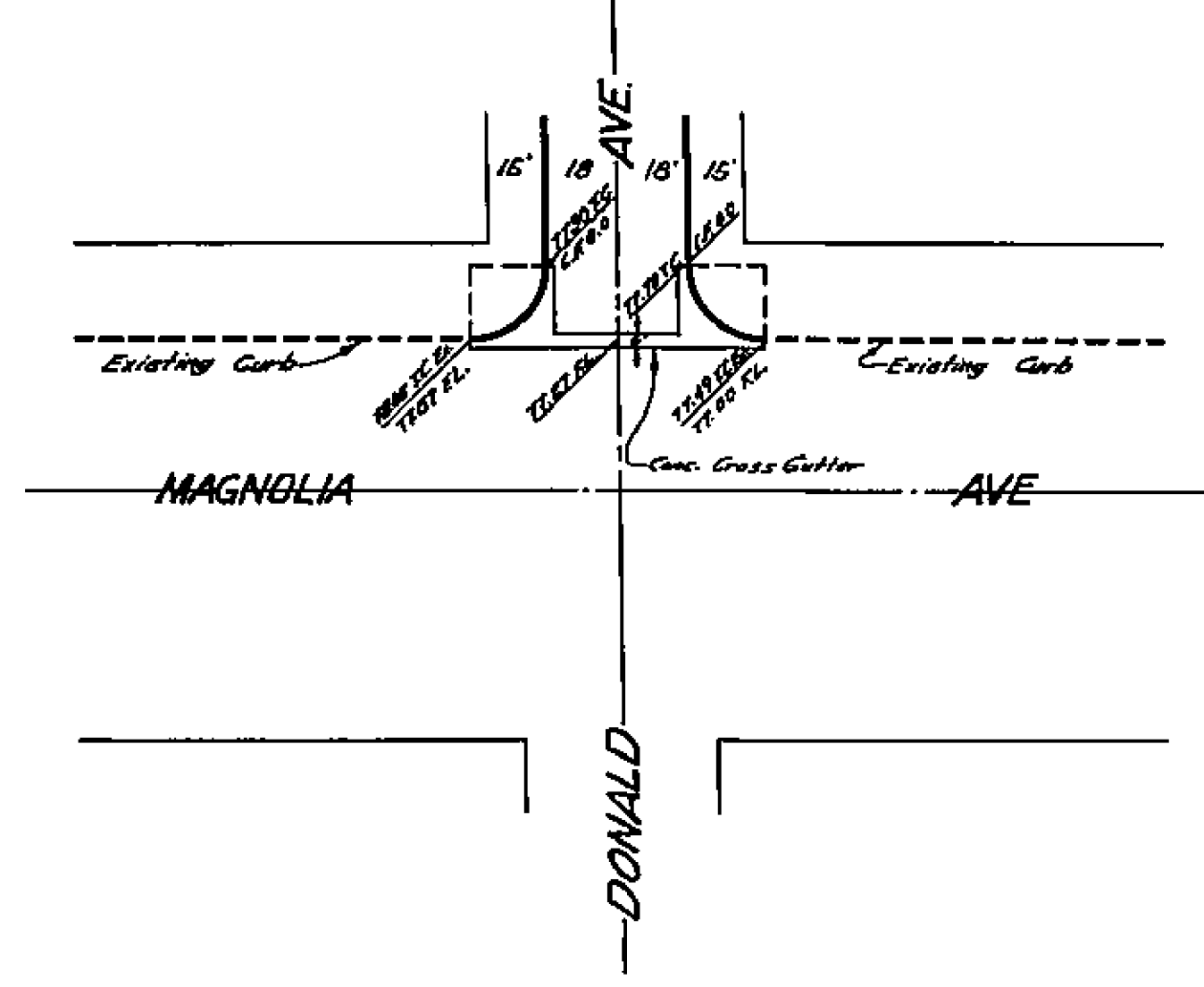
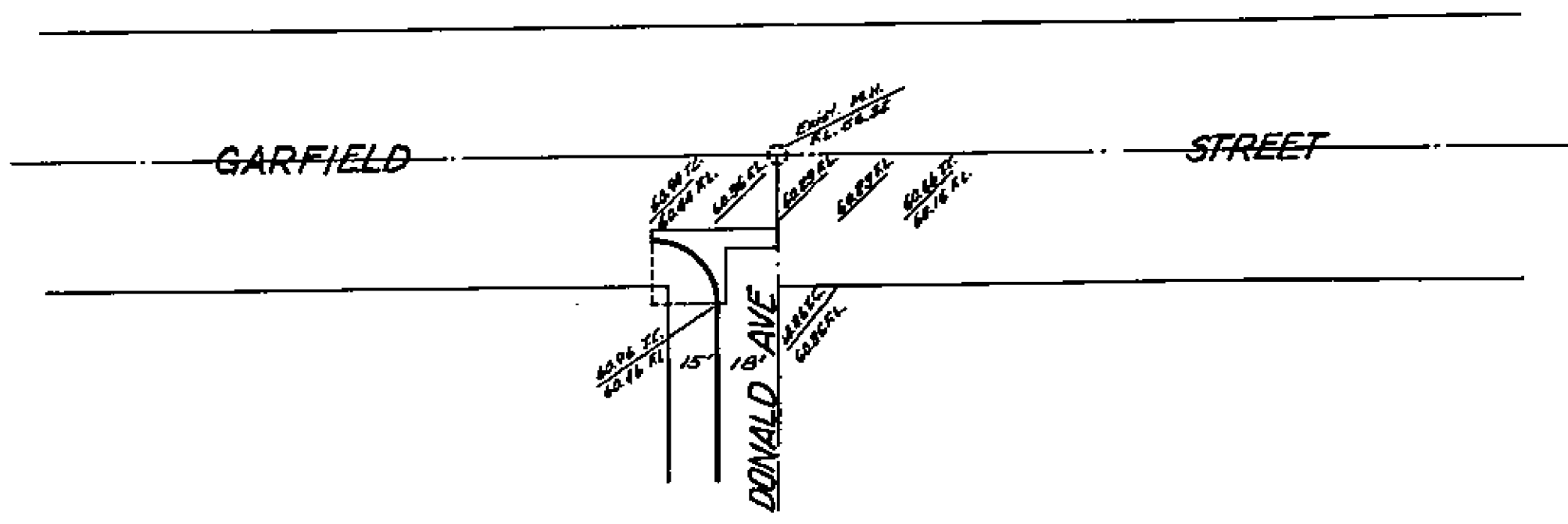
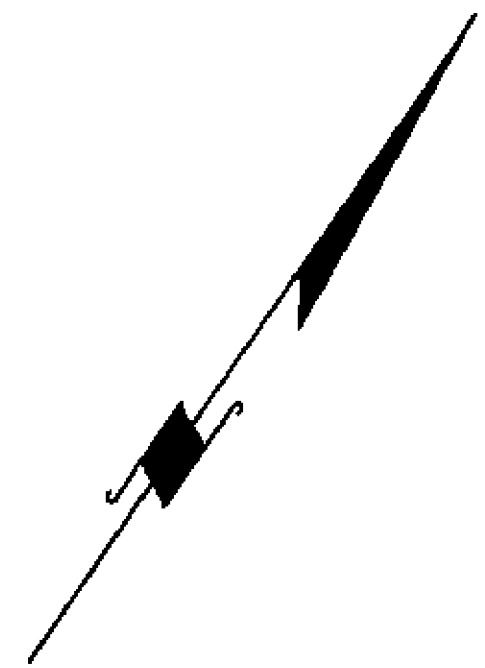


DATE OF ISSUE: 11/10/62  
BY: J.F. DAVIDSON  
NO. 11184

11184



Approved: *M. H. Swain*  
CITY ENGINEER

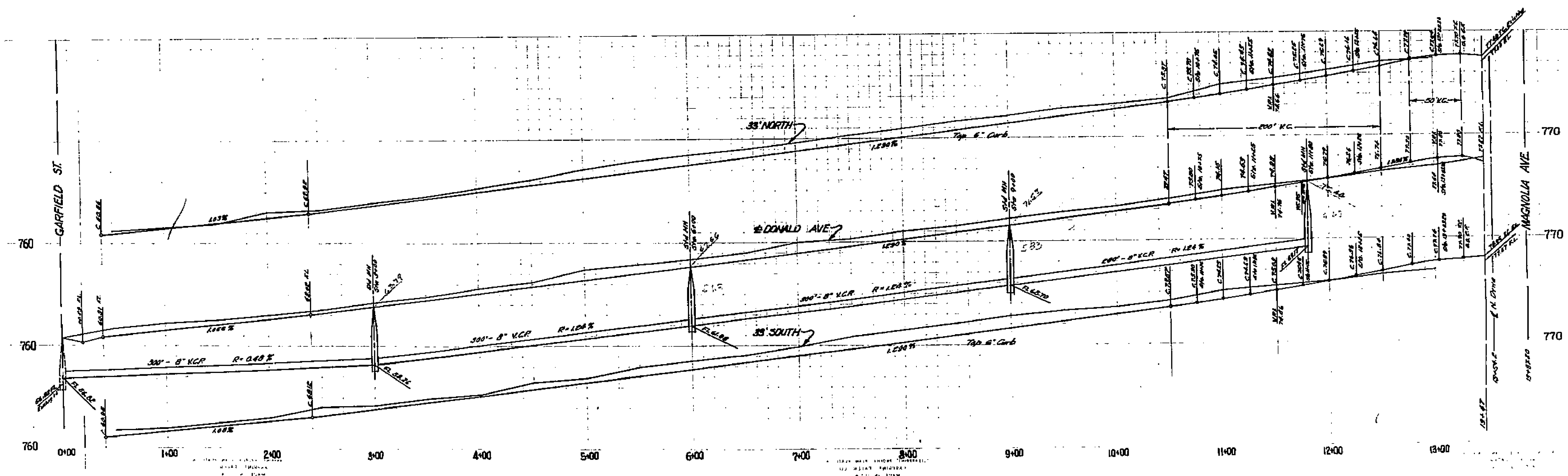
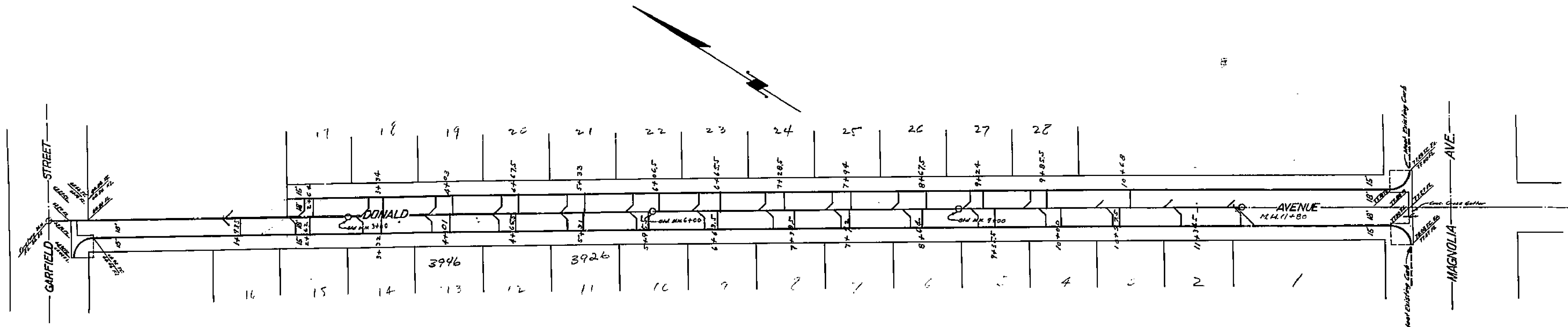
PLAN & PROFILE  
of  
Donald Avenue Extension Tract  
J.F. Davidson C.E. November 1962  
Scales - Horz. 1"=40'  
Vert. 1"=4'

City B.M. Elev. 762.20 R.R. Spike in EP #12267-J  
Nly side Garfield opposite Staffs Street

1184

CITY OF  
ENGINEER

PLANNING  
DIVISION  
NOV 1952



PLAN & PROFILE  
OF  
Donald Avenue Extension Tract  
J.F. Davidson C.E. November 1952  
Scale - Horiz. 1"=40'  
Vert. 1"=4'

Approved *M. H. Linn*  
CITY ENGINEER

1184

CITY OF  
ENGINEER