

NO.	DATE	DESCRIPTION
1		L.S.W. Upke. Revised Location

MASSACHUSETTS AVE
SANITARY SEWER
BETWEEN
KANSAS AVE & CHICAGO AVE

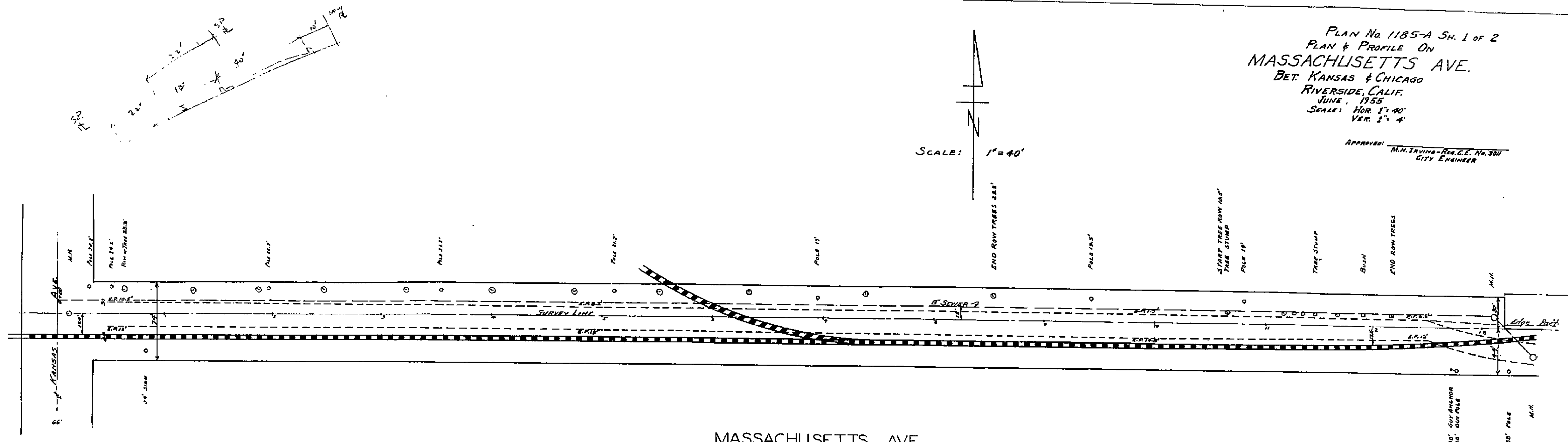
PLAN NO. 1185-A

1185 A

PLAN No. 1185-A SH. 1 of 2
 PLAN & PROFILE ON
MASSACHUSETTS AVE.
 BET. KANSAS & CHICAGO
 RIVERSIDE, CALIF.
 JUNE, 1955
 SCALE: HOR. 1" = 40'
 VER. 1" = 4'

APPROVED: M.H. Irvine - Reg. C.E. No. 3011
 CITY ENGINEER

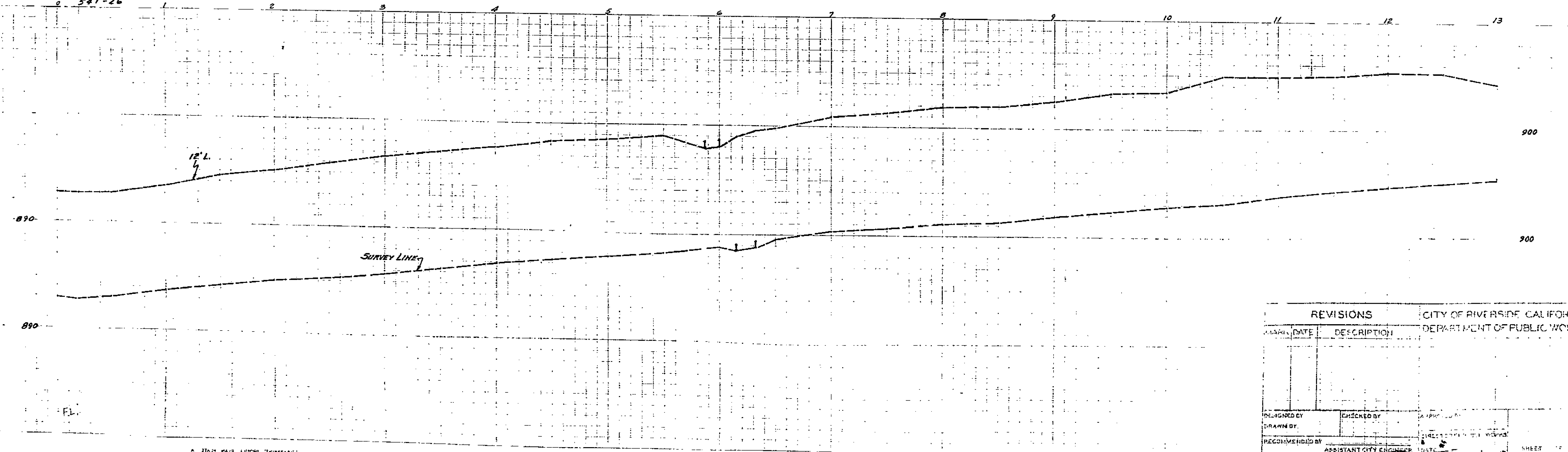
SCALE: 1" = 40'



MASSACHUSETTS AVE.

B.M. 892.69 TOP OF IRON PIPE (CAPPED)
 @ KANSAS & SURVEY LINE ON MASS. F.B. 430-G

FB. 468-60
 536-63
 566-33
 581-26



REVISIONS		CITY OF RIVERSIDE, CALIFORNIA DEPARTMENT OF PUBLIC WORKS	
NO.	DATE	DESCRIPTION	

DESIGNED BY	CHECKED BY	DATE
DRAWN BY	RECOMMENDED BY	DATE

1185-A

A. J. HARRIS ENGINEERING
 222 S. MAIN ST.
 RIVERSIDE, CALIF.

A. J. HARRIS ENGINEERING
 222 S. MAIN ST.
 RIVERSIDE, CALIF.