

9811

DIAGRAM

EXHIBITING ARLINGTON-ARBOR SANITARY SEWER DISTRICT

IN THE CITY OF RIVERSIDE ON WHICH WORK HAS BEEN DONE UNDER THE OFFICIAL CONTRACT #3 SUPERINTENDENT OF STREETS OF SAID CITY WITH C.O. BRAND DATED APRIL 7, 1954






FOR THE CONSTRUCTION OF SANITARY SEWER, MANHOLES, CLEANOUT, WYE BRANCHES, AND HOUSE CONNECTIONS.

AS IS MORE PARTICULARLY DESCRIBED IN SAID CONTRACT TO WHICH REFERENCE IS HEREBY MADE FOR FURTHER PARTICULARS, SAID DIAGRAM ALSO SHOWS THE RELATIVE LOCATION OF EACH LOT, PORTION OF LOT PIECE OR PARCEL OF LAND ASSESSED FOR THE WORK DONE NUMBERED IN CIRCLES TO CORRESPOND TO THE RED INK NUMBERS IN THE ASSESSMENT

HEREIN FIGURES NEXT TO PROPERTY LINES SHOW LENGTH OF SAID LINES IN FEET. THE MARK (') MEANS FEET. PROPERTY LINES THAT DIFFER FROM THE RECORDED SUBDIVISIONS ARE SHOWN BY BROKEN LINES. THE DISTRICT BENEFITED IS BOUNDED BY A HEAVY DASHED LINE PROPERTY COVERED BY THIS ASSESSMENT IS SHOWN ON THE FOLLOWING RECORDED MAPS:

WILKIN SUBDIVISION. REC. IN MB. 24, PG. 13, REC. RIV. CO.
 WILKIN SUBDIVISION UNIT NO. 2. REC. IN MB. 24, PG. 75, REC. RIV. CO.
 SECTION 32, T2S, R5W, S.B.B.&M.
 R.L.&I. CO. LANDS. REC. IN MB. 1, PG. 70, REC. S.B. CO.

HEREIN THE LEGEND OF THE DIFFERENT KINDS OF WORK PERFORMED IS SHOWN AS FOLLOWS:

- SANITARY SEWER 
- STD. MANHOLE 
- STD. CLEANOUT 
- STD. WYE BRANCH 
- HOUSE CONNECTION 

CITY ENGINEER OF THE CITY OF RIVERSIDE THE FOLLOWING IS A STATEMENT OF AMOUNTS OF DIFFERENT KINDS OF WORK DONE BY C.O. BRAND UNDER CONTRACT DATED APRIL 7, 1954 PURSUANT TO RESOLUTION OF INTENTION NO. 6033 ADOPTED BY THE CITY COUNCIL OF THE CITY OF RIVERSIDE ON THE 17 TH DAY OF NOVEMBER 1953

10" VITRIFIED CLAY PIPE SEWER	1195.27 LIN. FT.
8" VITRIFIED CLAY PIPE SEWER	725.62 " "
4" VITRIFIED CLAY PIPE HOUSE CONNECTIONS	808 LIN. FT.
8"x4" VITRIFIED CLAY WYE BRANCHES	20
10"x4" VITRIFIED CLAY WYE BRANCHES	6
STD. MANHOLES	1
STD. CLEANOUT	1

AT SAID CITY OF RIVERSIDE THIS 30TH DAY OF JULY 1954

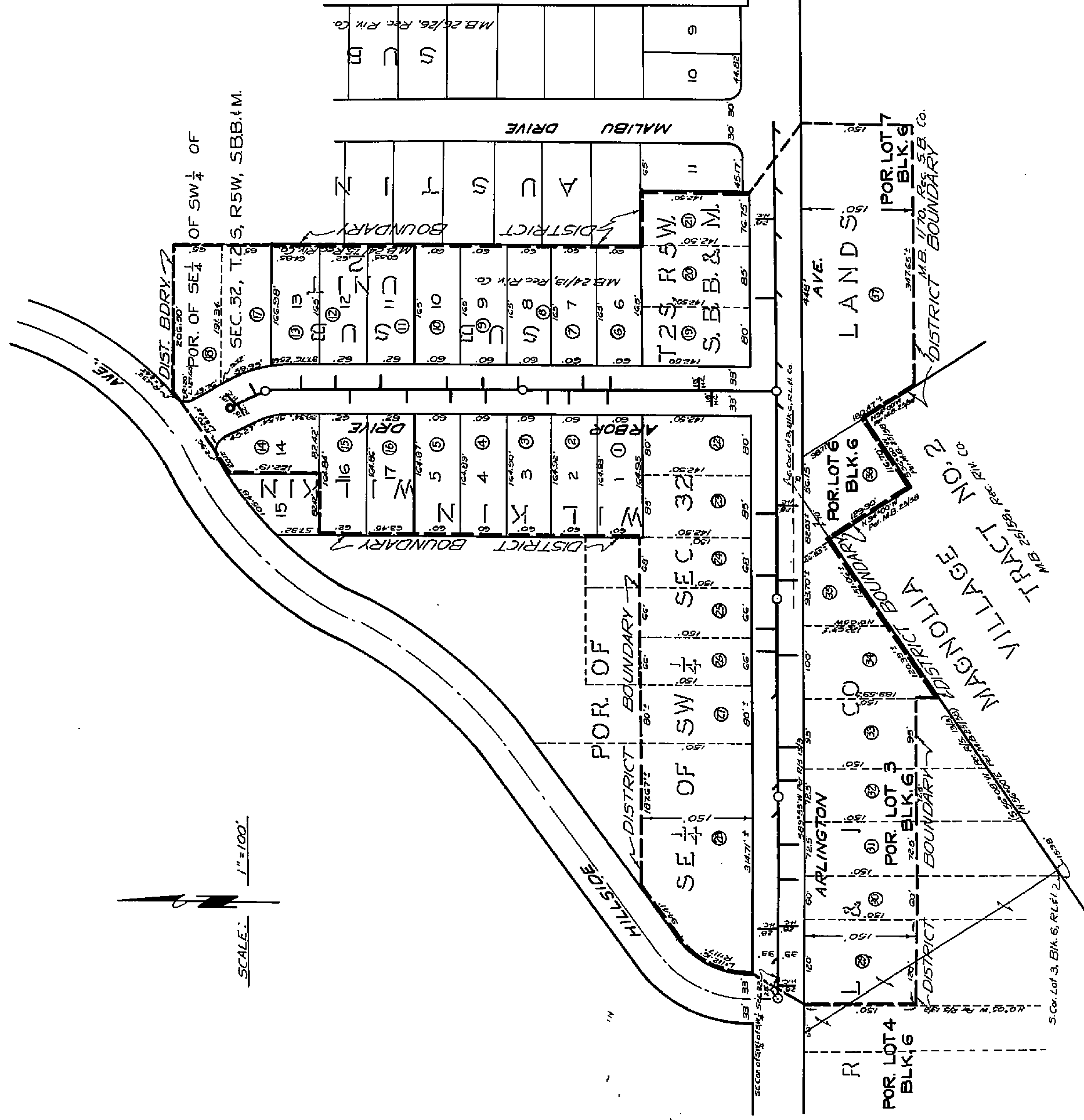
CITY ENGINEER OF THE CITY OF RIVERSIDE

I HEREBY CERTIFY THAT THE ABOVE WORK WAS DONE IN ACCORDANCE WITH LINES AND GRADES FURNISHED BY ME AND THAT THE DIAGRAM OF THE ASSESSMENT DISTRICT FOR THE SAME IS CORRECT.

CITY ENGINEER OF THE CITY OF RIVERSIDE

RECORDED AT 8:45 O'CLOCK A. M. THIS 25TH DAY OF AUGUST 1954

SUPERINTENDENT OF STREETS OF THE CITY OF RIVERSIDE



SCALE: 1" = 100'



1186