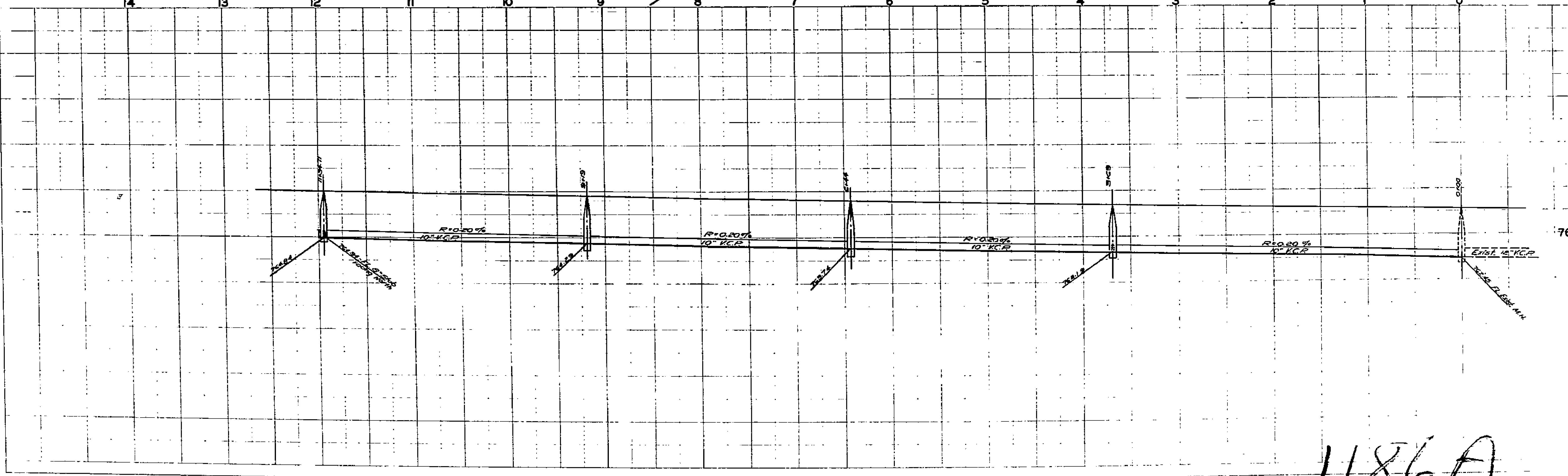
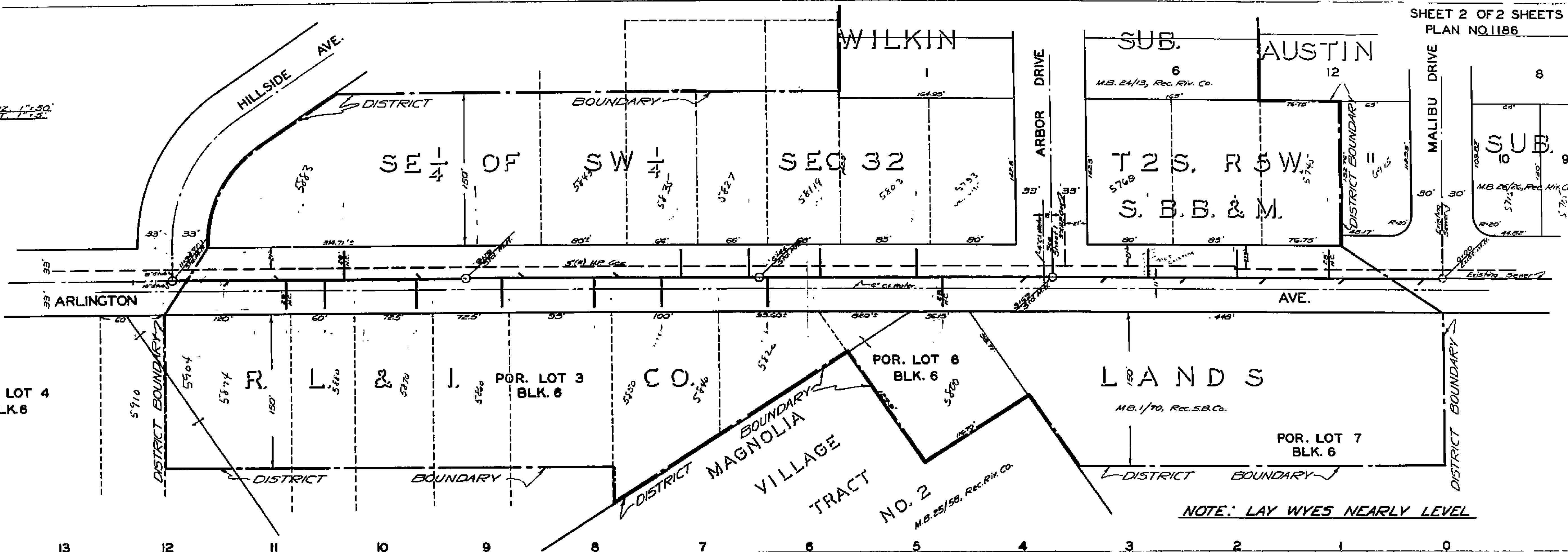
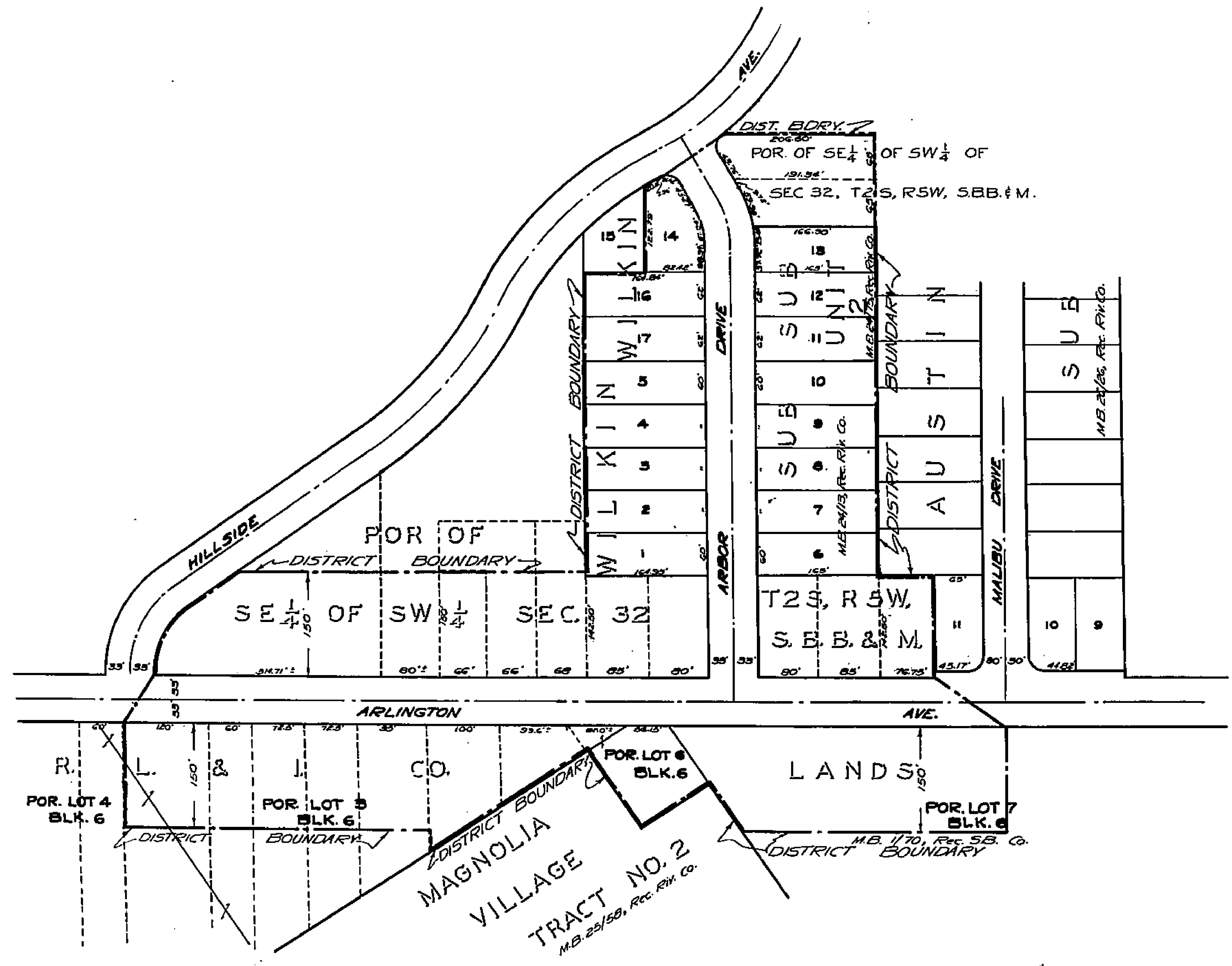


SCALES:
HORIZ. 1"=50'
VERT. 1"=5'



1186A



SCALE: 1"=100'

PLAN NO. 1186 A
 SHOWING THE LANDS INCLUDED
 WITHIN THE ASSESSMENT DISTRICT
 TO BE BENEFITED BY THE CONSTRUCTION
 OF A SANITARY SEWER IN THE
 MATTER OF
ARLINGTON-ARBOR
SANITARY SEWER DISTRICT
 RIVERSIDE CALIFORNIA

APPROVED *M. H. Irvine*
 M. H. IRVINE, REG. C. E. NO. 3011
 CITY ENGINEER

THIS PLAN APPROVED AND ADOPTED BY THE
 MAYOR AND COUNCIL OF THE CITY OF RIVERSIDE
 STATE OF CALIFORNIA ON THIS _____ DAY OF
 _____ 1953.

 CITY CLERK

DISTRICT BOUNDARY SHOWN THUS ————

1186A