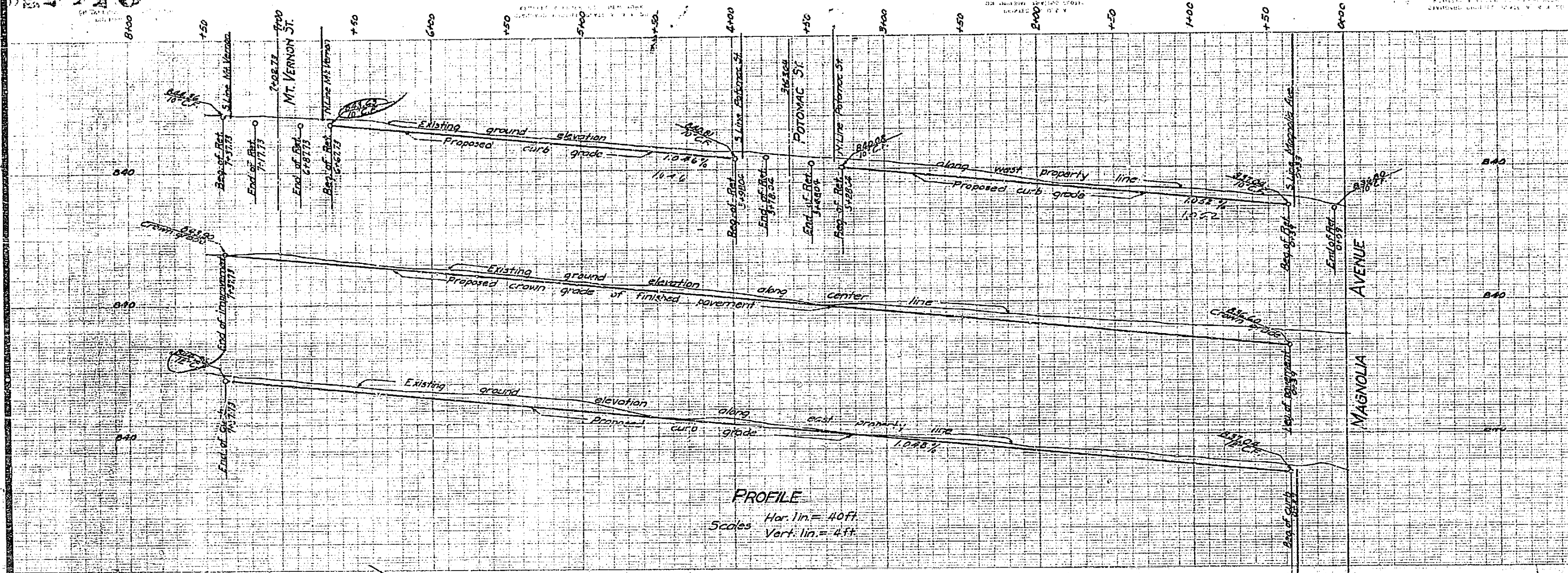


10110

10110



PLAN AND PROFILE OF THE PROPOSED IMPROVEMENT OF WASHINGTON STREET

FROM MAGNOLIA AVENUE TO MT. VERNON STREET
AND A PORTION OF MAGNOLIA AVENUE.

ENGINEERING DEPT. CITY OF RIVERSIDE JUNE 1930

*Imp. protested out
See sheet #951*

PLANS, PROFILES AND MAPS NUMBER 951 CONSISTING OF 2 SHEETS
SHEET NUMBER 1 IMPROVEMENT OF WASHINGTON STREET AND A PORTION OF MAGNOLIA AVENUE
SHEET NUMBER 210 MAP OF THE DISTRICT TO BE ADDED FOR THE IMPROVEMENTS

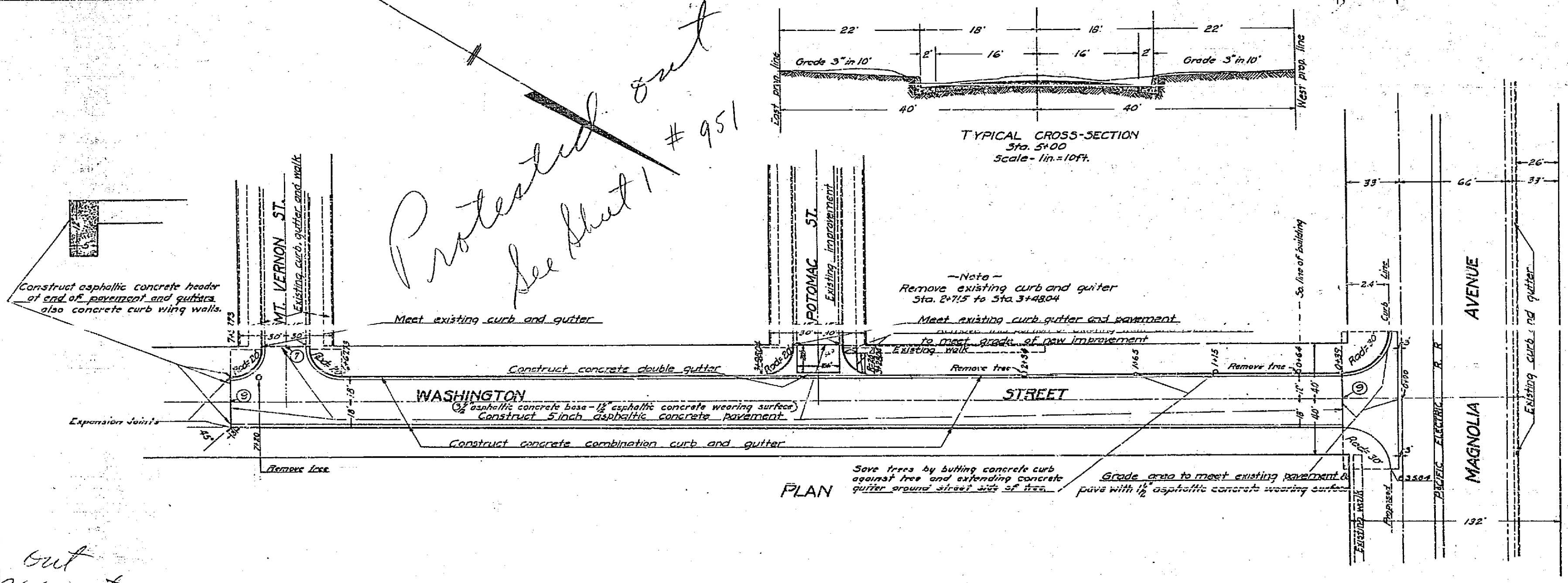
PROFILE
Hor. 1 in. = 40 ft.
Vert. 1 in. = 4 ft.

INSTRUCTIONS TO CONTRACTORS
FOLDER CONTAINING INSTRUCTIONS TO CONTRACTORS AND DETAIL PLANS
NO. 103 & 108 ARE A PART OF THESE PLANS AND SPECIFICATIONS.

ELEVATIONS SHOWN HEREON ARE U.S.G.S. DATUM.

FIELD BOOKS
BOOK 212 PAGE 48-68
BOOK 191 PAGE 34-56

ADOPTED BY THE MAYOR AND COUNCIL OF THE
CITY OF RIVERSIDE THIS 10TH DAY OF JUNE, 1930
W. J. ...
CLERK OF THE CITY OF RIVERSIDE



*Protested out
See sheet #951*

*out
see note
p. 1139*

119