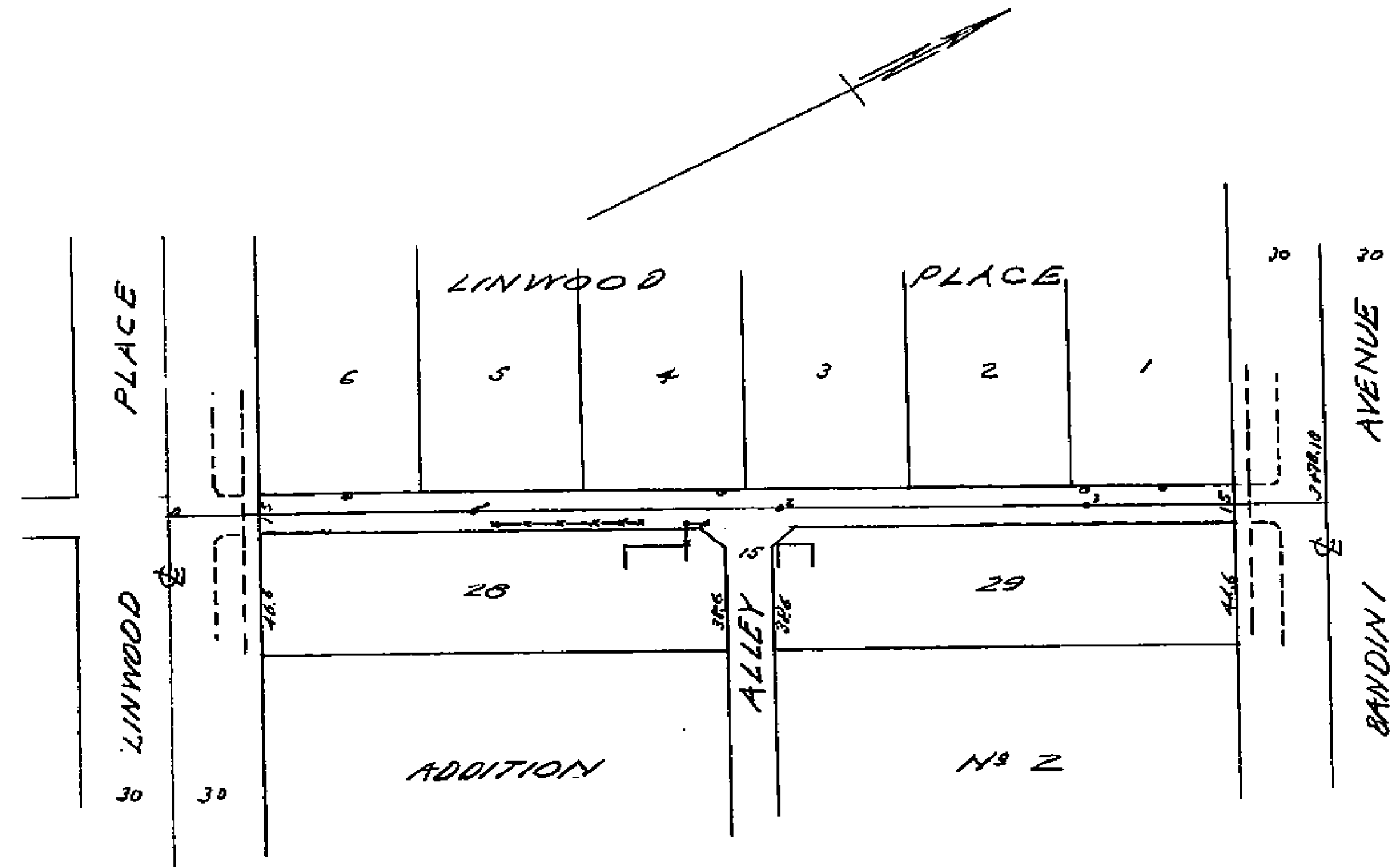


1185

1185

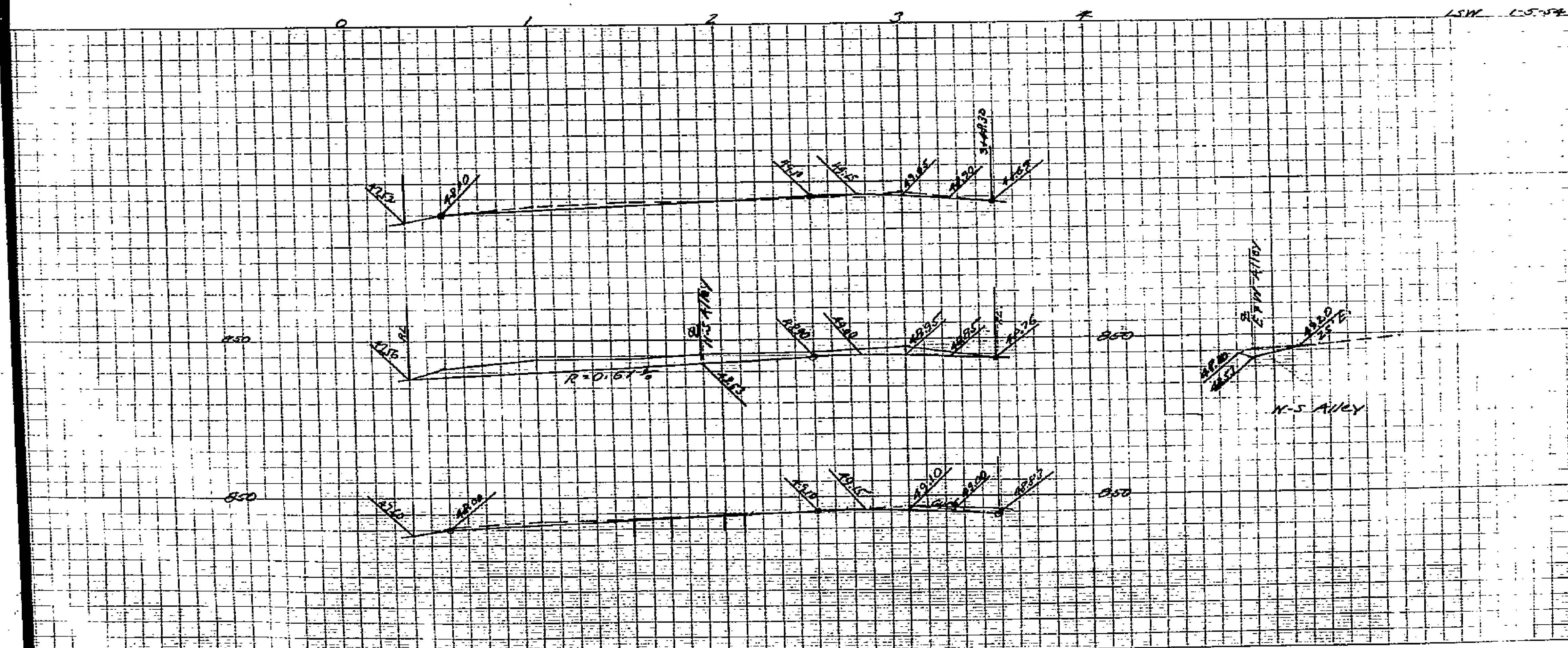


No 1192
 PLAN & PROFILE
 TO ESTABLISH GRADES
 FOR THE ALLEY
 BETWEEN LINWOOD PLACE & BARDIN AVENUE
 IN LINWOOD PLACE ADDITION NO 2

HORIZ. 1 IN. = 40 FT.
 VERT. 1 IN. = 4 FT.

APPROVED M. H. Swiney
 CITY ENGINEER.

RB. 636-74

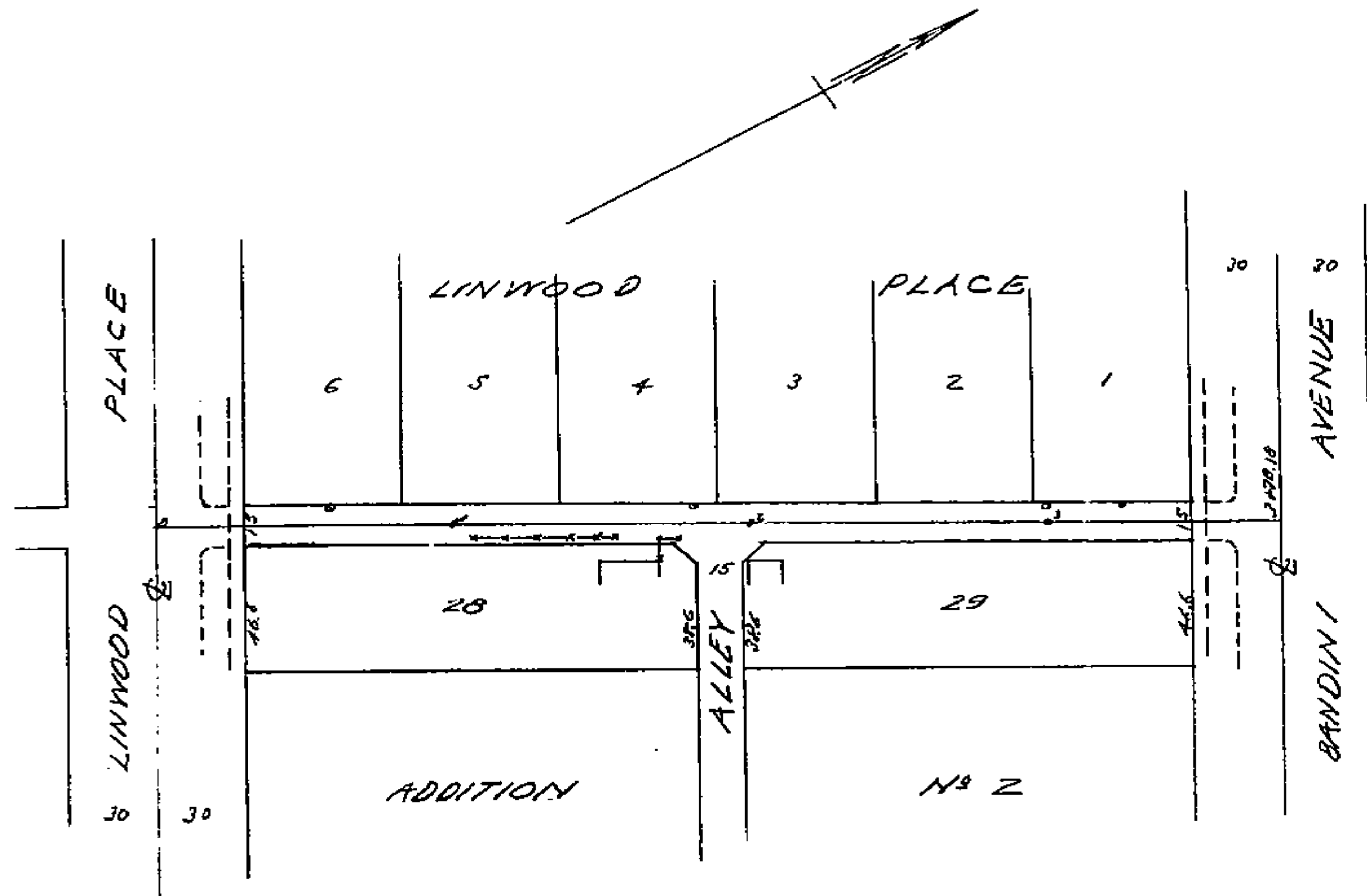


1185

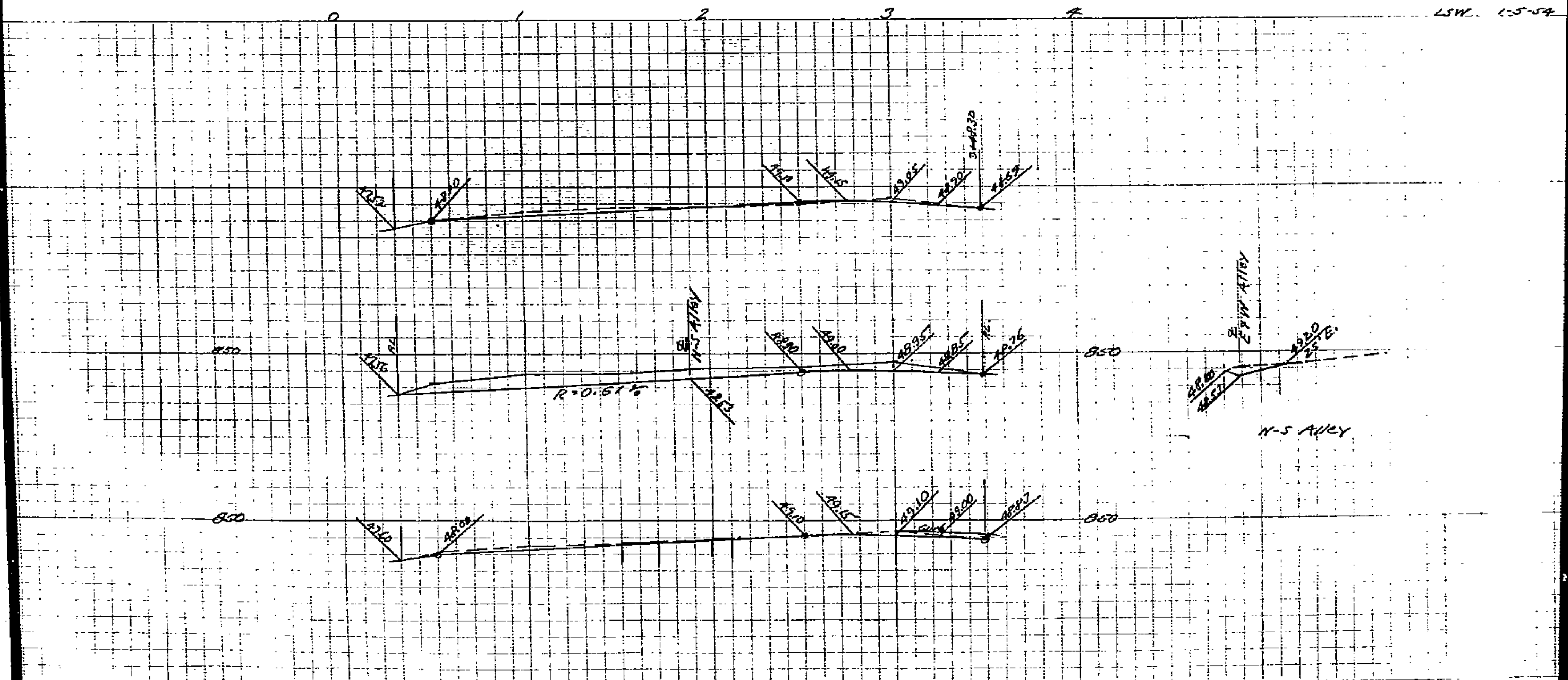
1185

SP11

SP5



N^o 119
 PLAN & SPECIFICATIONS
 TO ESTABLISH
 FOR THE
 BETWEEN LINWOOD PLACE AND BANDINI AVENUE
 IN LINWOOD PLACE ADDITION N^o 2
 SCALE 1" = 20 FT.
 1/4" = 10 FT.
 APPROVED: *H. J. ...*
 CITY ENGINEER.
 P.B. 626-74



SP11

SP5