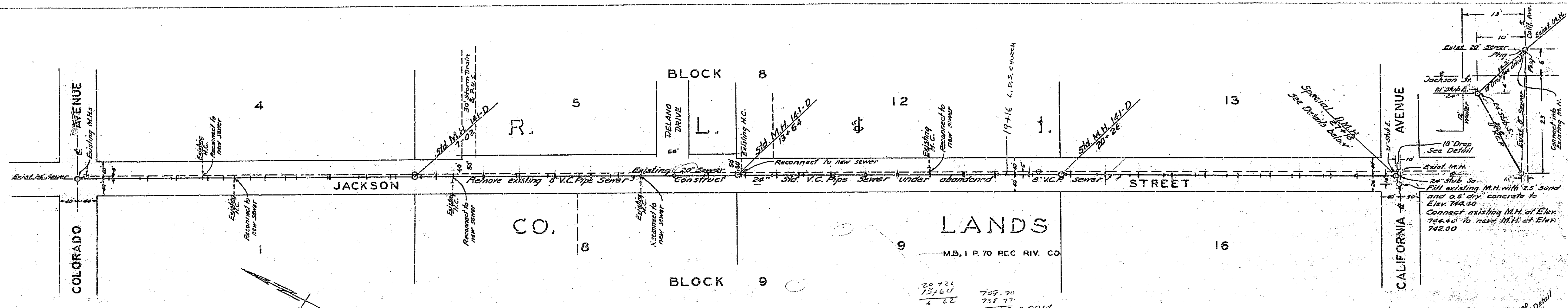


PLAN
 NO. 122
 DATE: JULY 22, 1952
 SHEET NO. 1 OF 1



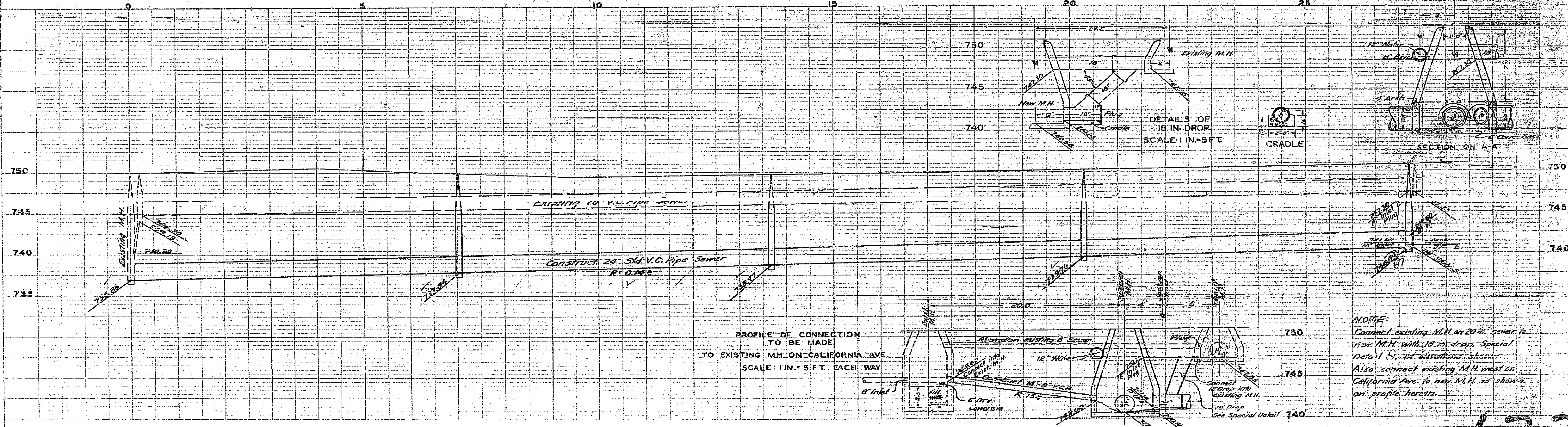
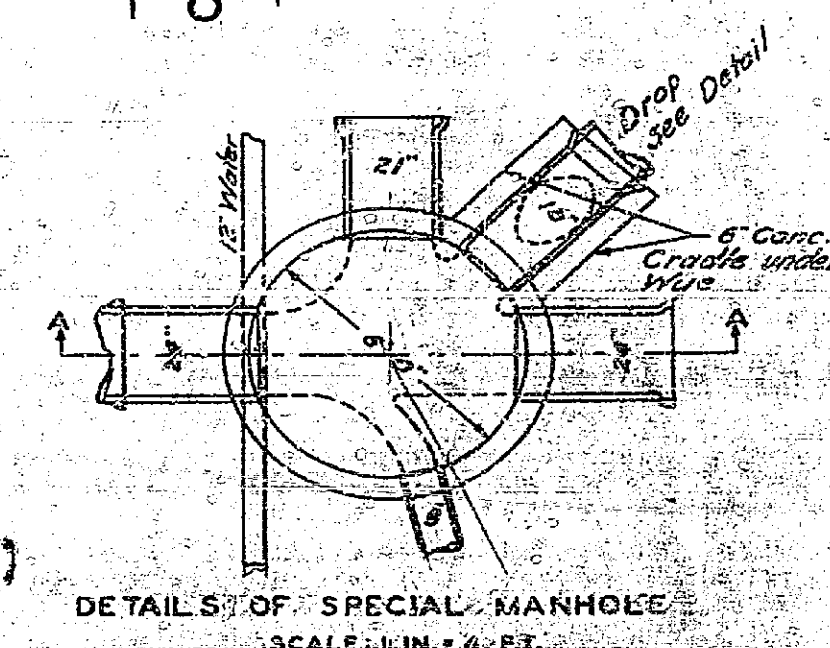
PLAN AND PROFILE NO. 122
 FOR THE CONSTRUCTION OF A
 TRUNK LINE SANITARY SEWER
 IN JACKSON STREET
 BETWEEN COLORADO AND CALIFORNIA AVENUES

APPROVED *M. H. Irvine*
 M.H. IRVINE, REG. C.E. NO. 3017
 CITY ENGINEER

HOR. 1 IN. = 100 FT.
 VERT. 1 IN. = 5 FT.

NOTE: 6 IN. TEE-HOLES AND FITTINGS ON TOP OF PIPE
 SHOWN THUS

THESE PLANS APPROVED AND ADOPTED BY THE MAYOR
 AND COUNCIL OF THE CITY OF RIVERSIDE STATE OF
 CALIFORNIA ON THIS 22 DAY OF July 1952
D. J. ...
 CITY CLERK



PROFILE OF CONNECTION
 TO BE MADE
 TO EXISTING M.H. ON CALIFORNIA AVE.
 SCALE: 1 IN. = 5 FT. EACH WAY

NOTE:
 Connect existing M.H. on 20" sewer to
 new M.H. with 10" drop. Special
 Detail S, at elevations shown.
 Also connect existing M.H. west on
 California Ave. to new M.H. as shown
 on profile herein.

122