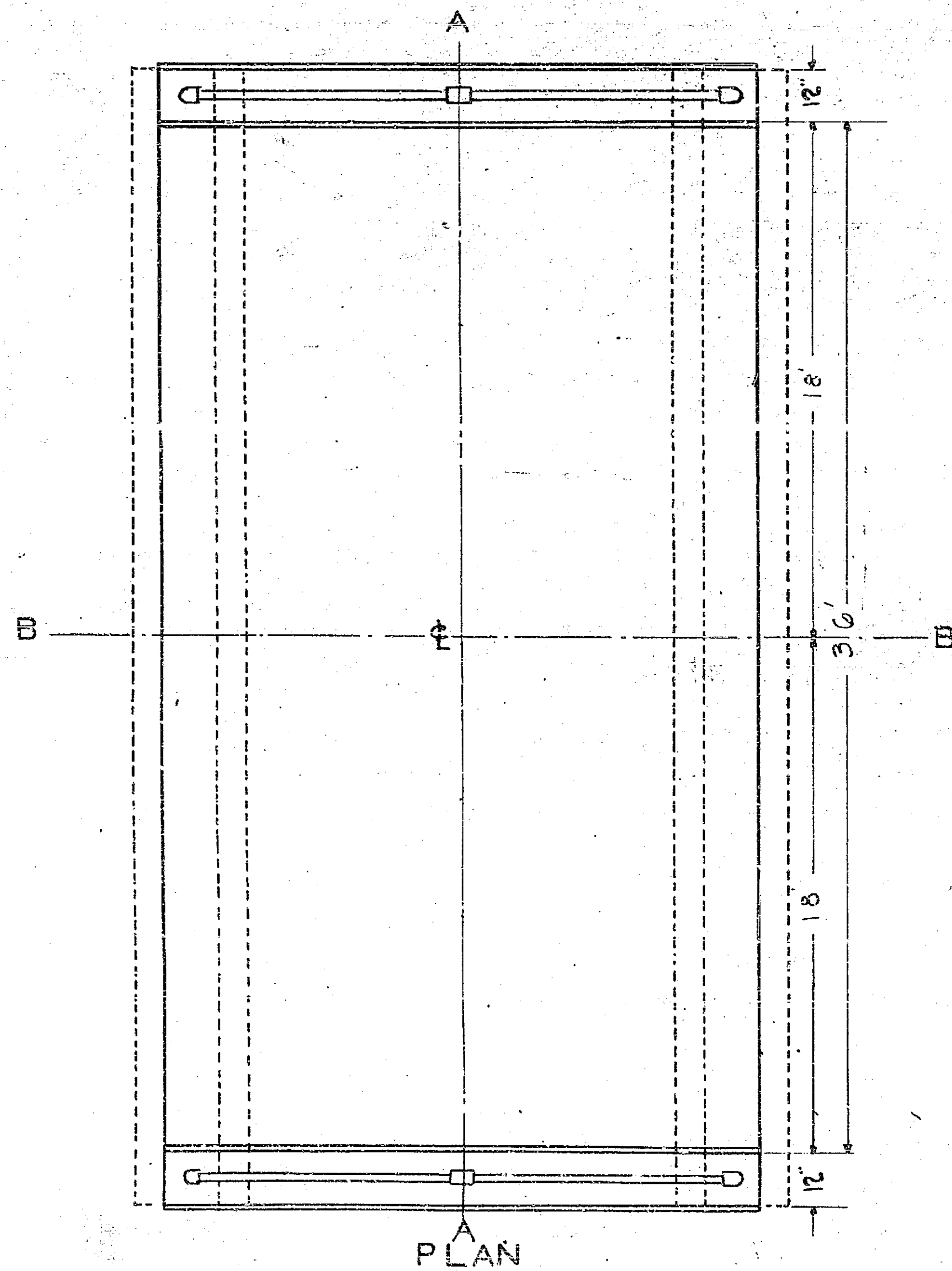
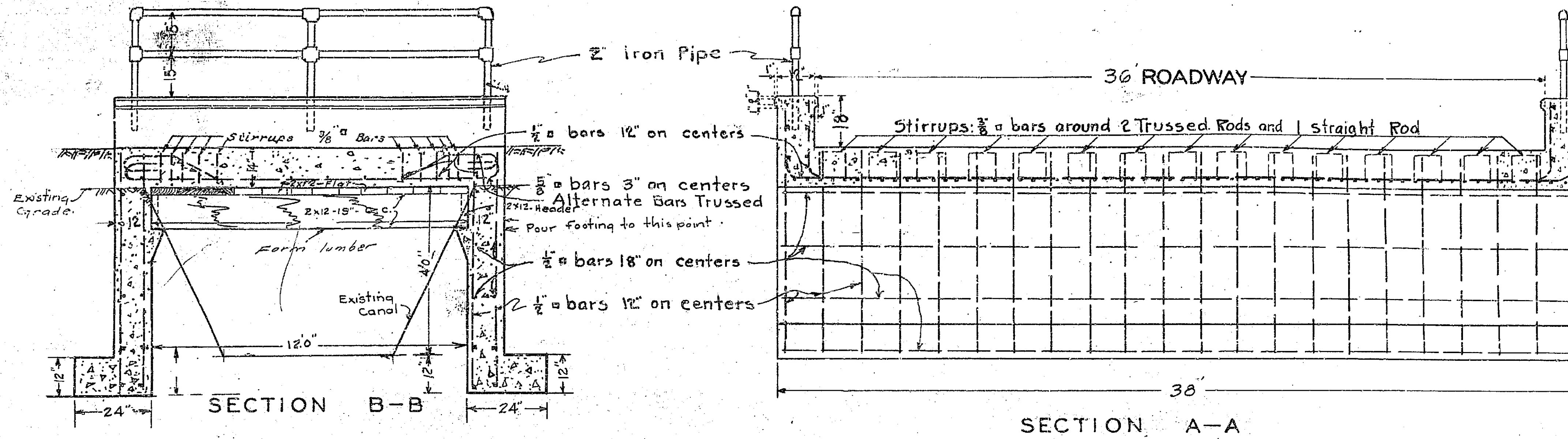


139-V

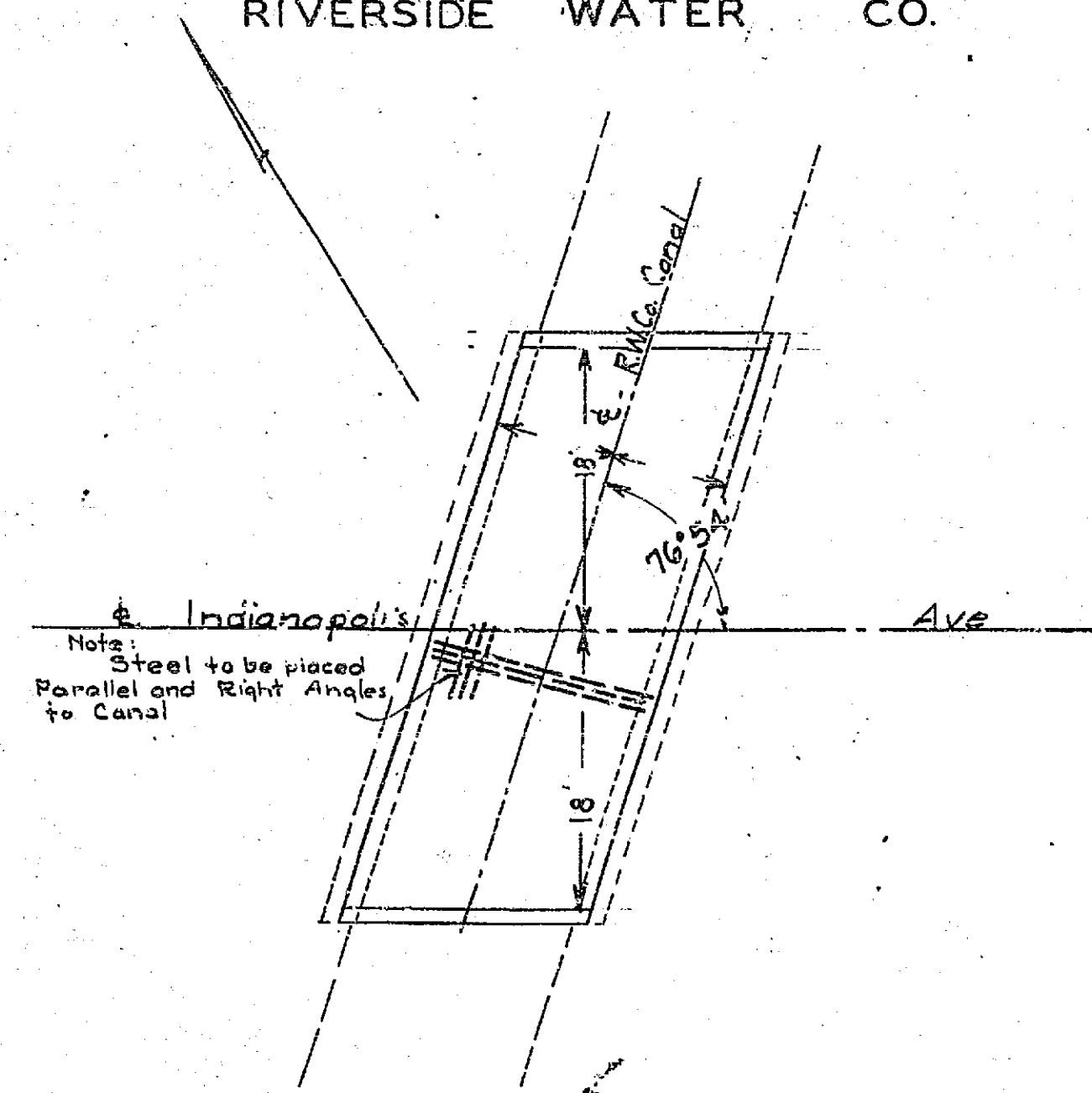
139-V



INDIANAPOLIS AVENUE  
**TYPICAL**  
**REINFORCED CONCRETE BRIDGE**

SCALE 1/2"=1' JUNE 1939

ENGINEERING DEPARTMENT  
 RIVERSIDE WATER CO.



125-A

ESTIMATE OF QUANTITIES	
EXCAVATION	CU. YDS.
CONCRETE	CU. YDS.
STEEL	LBS.