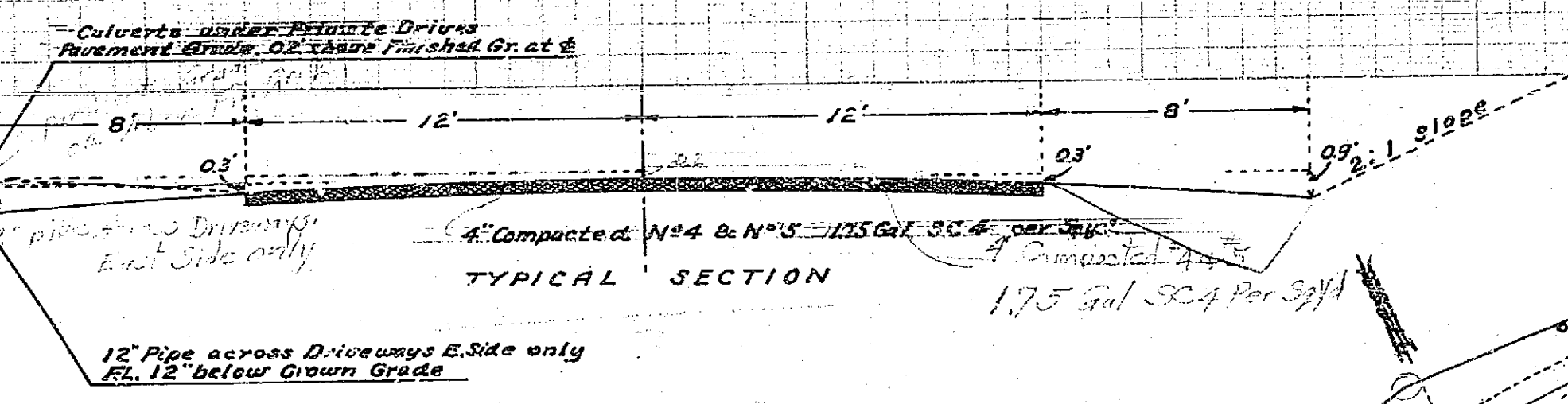
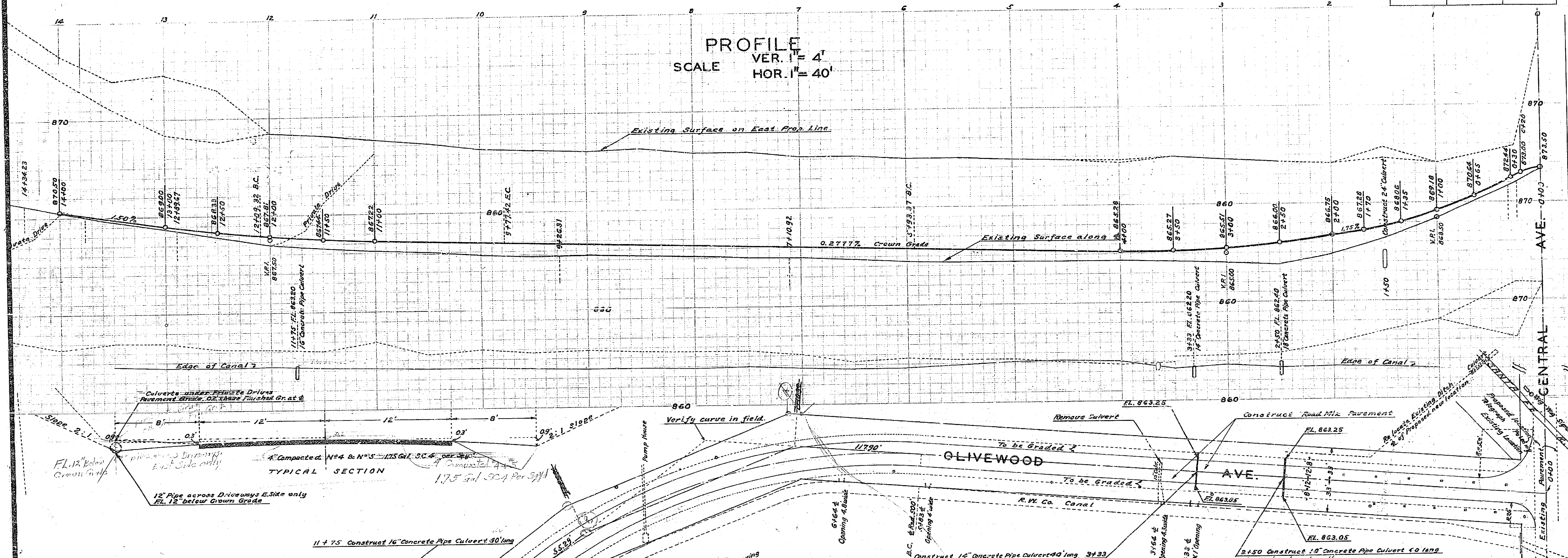
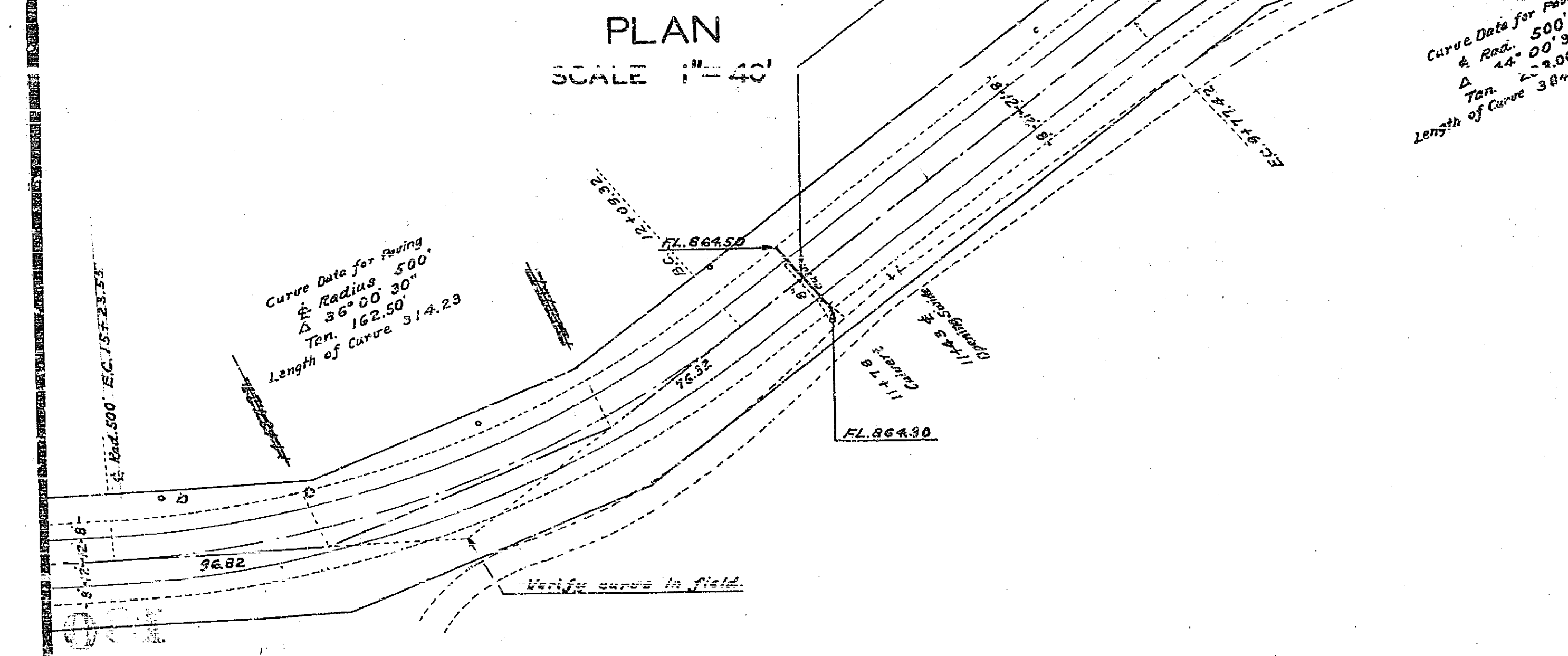


OLIVEWOOD AVENUE CENTRAL AV. TO JURUPA AV.			
Drawing Number	Sheet Number	Total Sheets	Field Book
130	1	2	967
Drawn	Checked	Approved	

PROFILE
VER. 1" = 4'
SCALE HOR. 1" = 40'



PLAN
SCALE 1" = 40'



PLANS AND PROFILES OF THE PROPOSED IMPROVEMENT OF OLIVEWOOD AVENUE CENTRAL AVE. TO JURUPA AVE.

ENGINEER DEPT. RIVERSIDE CALIF. 1939.
CITY (U.S.G.S.) DATUM PLANE
FIELD BOOK 369 PAGES 9-32

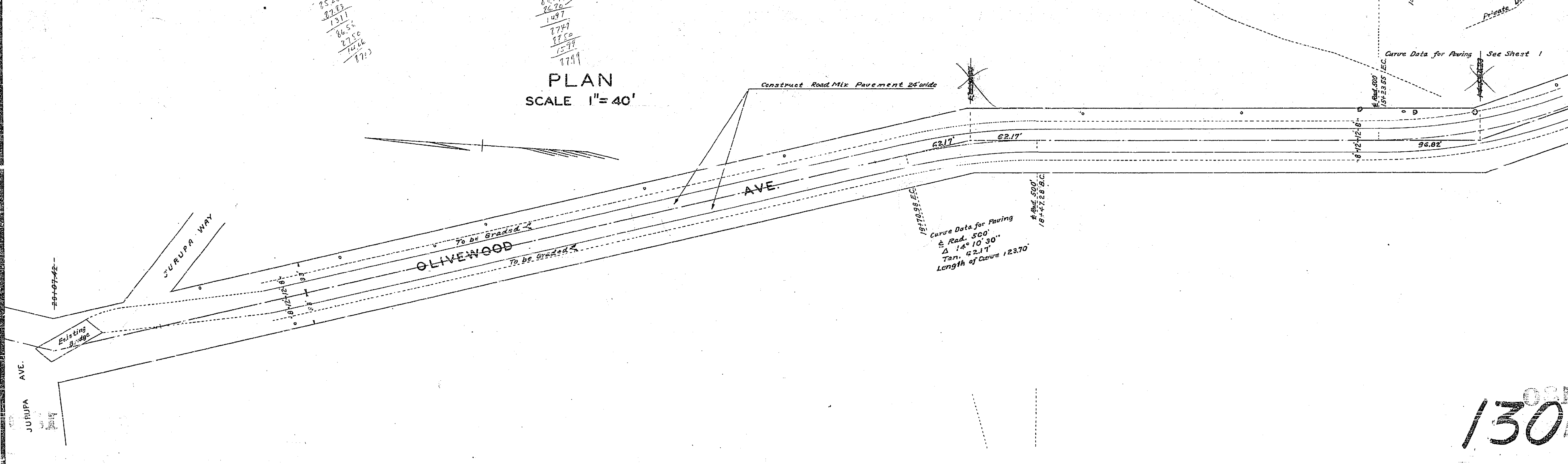
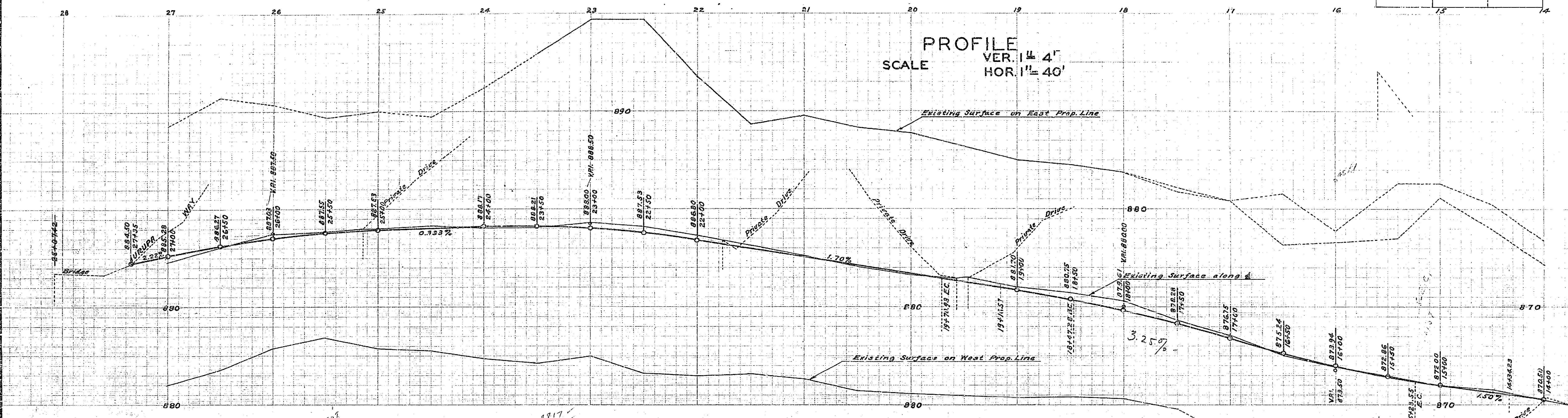
APPROVED AND ADOPTED BY THE MAYOR
AND COUNCIL OF THE CITY OF RIVERSIDE
THIS DAY OF 1939.

APPROVED
CITY ENGINEER
REGISTERED ENGINEER NO. 1312

CITY CLERK, CITY OF RIVERSIDE.

130

OLIVEWOOD AVENUE CENTRAL AV. TO JURUPA AV.			
Drawing Number	Sheet Number	Total Sheets	Price Book
130	2	2	369
Drawn	Checked	Approved	
			15



8528
8789
1311
1497
6652
2770
1416
1773

8817
8670
1497
2779
2750
1579
1749

Curve Data for Paving
R. Rad. 500'
Δ 14° 10' 30"
Tan. 62.17'
Length of Curve 123.70'

130