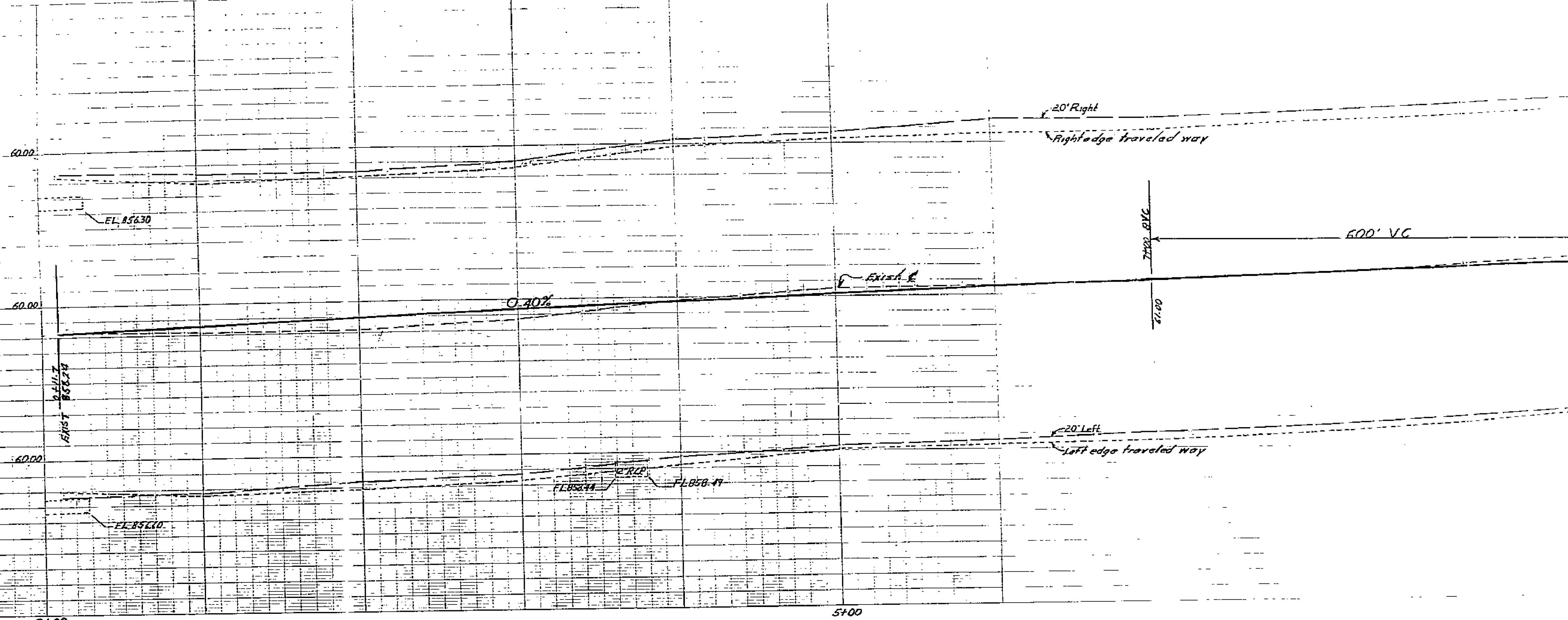


VERT. SCALE
1" = 4'



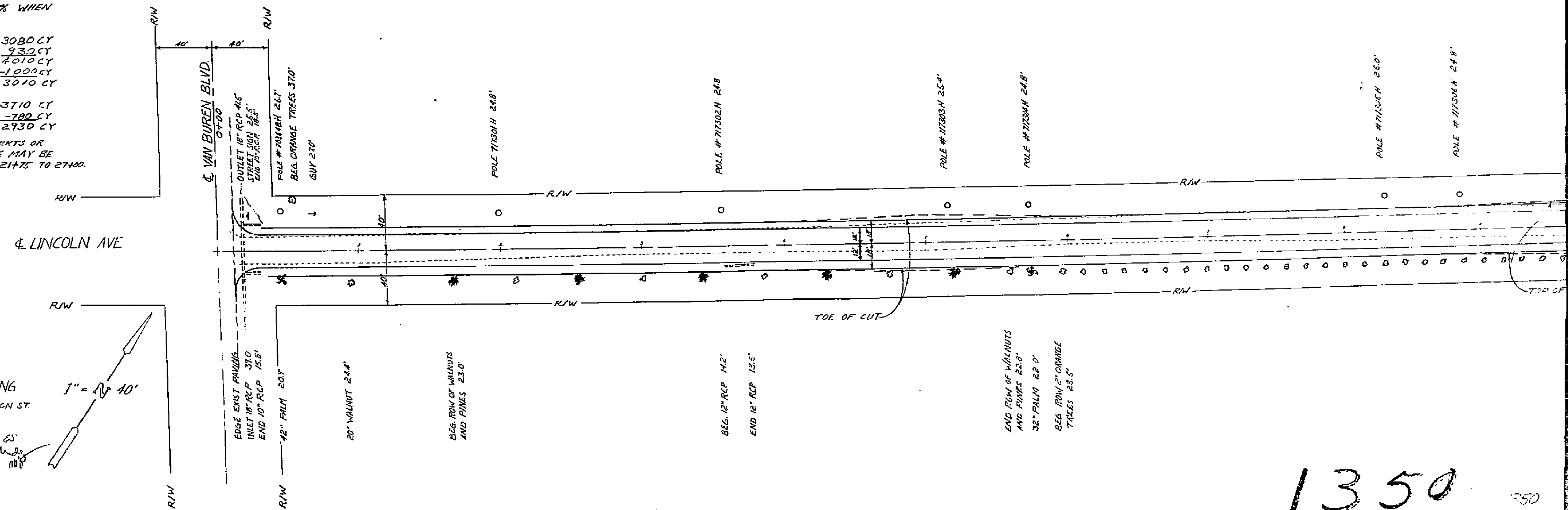
FB E-3 pp 42-47

NOTE:
A CUT AND FILL BALANCE IS BASED ON AN IMPORTED AB. OF 6" (1200 CY)
AND 2 1/2" AC. LOCAL MATERIAL IS ASSUMED TO SHRINK 25% WHEN
COMPACTED AS FILL.

CUT TO FINISH GRADE	3080 CY
CUT FOR 24' WIDE X 8 1/2" DEEP PAVED SECTION	230 CY
TOTAL CUT	7010 CY
LESS 25% COMPACTION IN FILL	-1000 CY
TOTAL FILL AVAILABLE	3010 CY

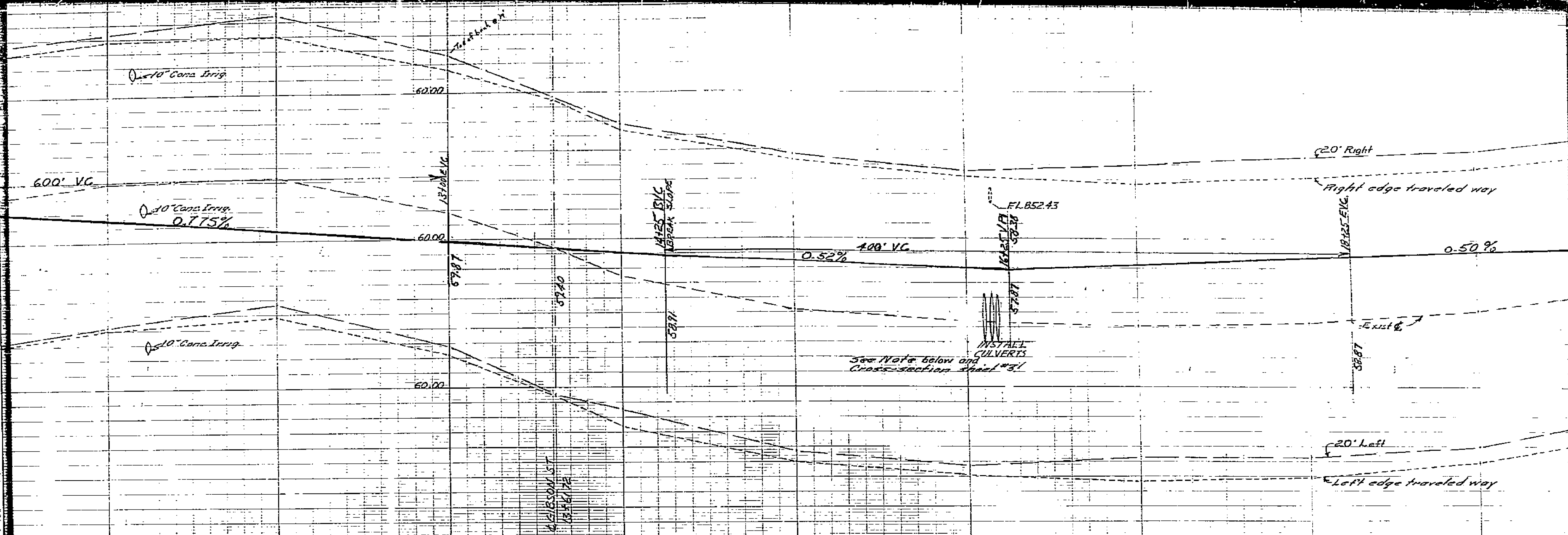
FILL TO FINISH GRADE	3710 CY
FILL IN 24' WIDE X 8 1/2" DEEP PAVED SECTION	-780 CY
TOTAL FILL REQUIRED	2930 CY

NO ALLOWANCE IS MADE FOR FILL REPLACED BY CULVERTS OR
REQUIRED BY DRIVEWAY APPROACHES. FINAL BALANCE MAY BE
ACHIEVED BY ADJUSTING THE GRADE BETWEEN STA 2+175 TO 2+400.

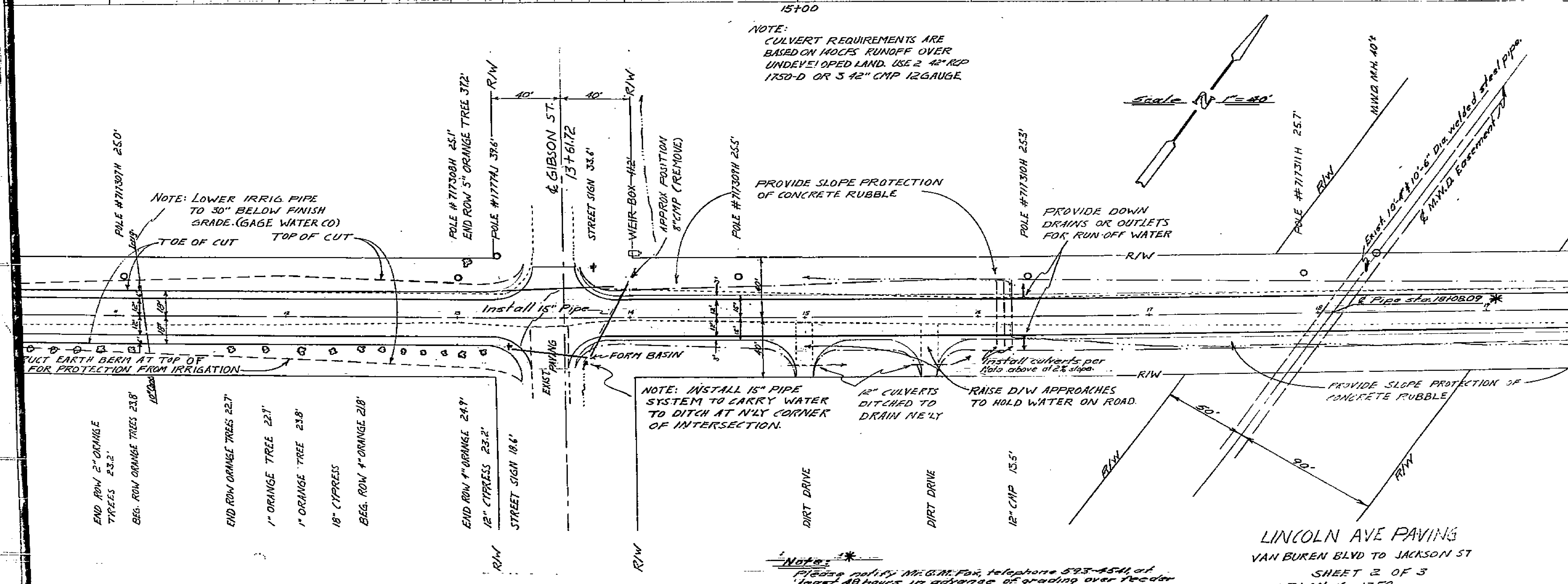
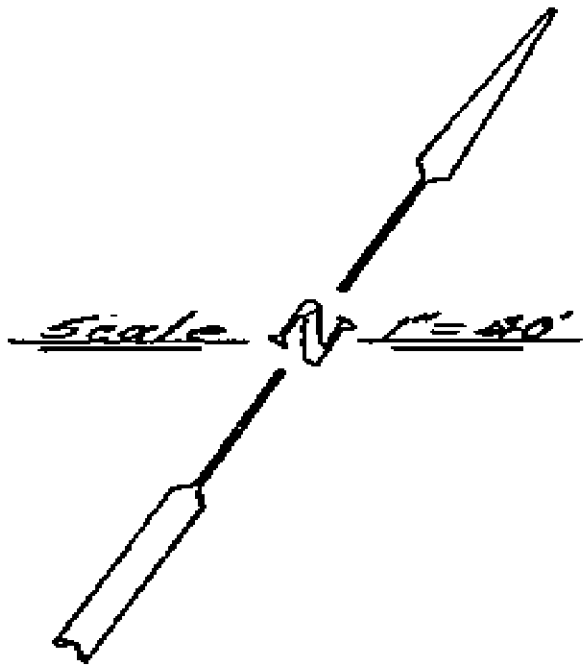


LINCOLN AVE. PAVING
VAN BUREN BLVD TO JACKSON ST.
Drawn For Public Service
Dec, 1963
Sheet 1 of 3
Plan No. 1350

PAVING



NOTE:
 CULVERT REQUIREMENTS ARE
 BASED ON 140 CFS RUNOFF OVER
 UNDEVELOPED LAND. USE 2 42" RCP
 1750-D OR 3 42" CMP 12 GAUGE.



NOTE: LOWER IRRIG PIPE
 TO 30" BELOW FINISH
 GRADE. (GAGE WATER CO)
 TOE OF CUT TOP OF CUT

PROVIDE SLOPE PROTECTION
 OF CONCRETE RUBBLE

PROVIDE DOWN
 DRAINS OR OUTLETS
 FOR RUN-OFF WATER

NOTE: INSTALL 15" PIPE
 SYSTEM TO CARRY WATER
 TO DITCH AT N'LY CORNER
 OF INTERSECTION.

12" CULVERTS
 DITCHED TO
 DRAIN N'LY

RAISE DIW APPROACHES
 TO HOLD WATER ON ROAD.

PROVIDE SLOPE PROTECTION OF
 CONCRETE RUBBLE

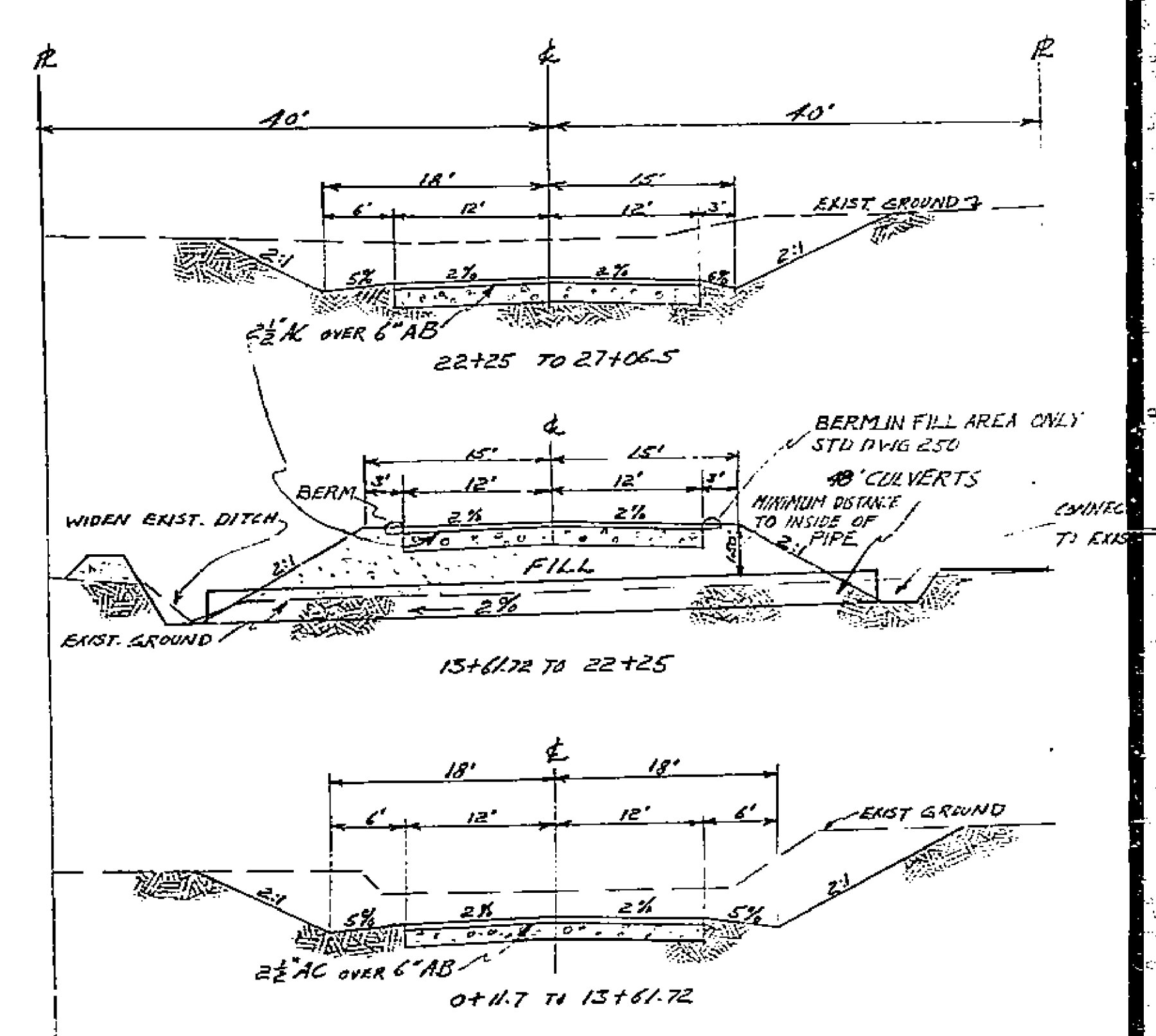
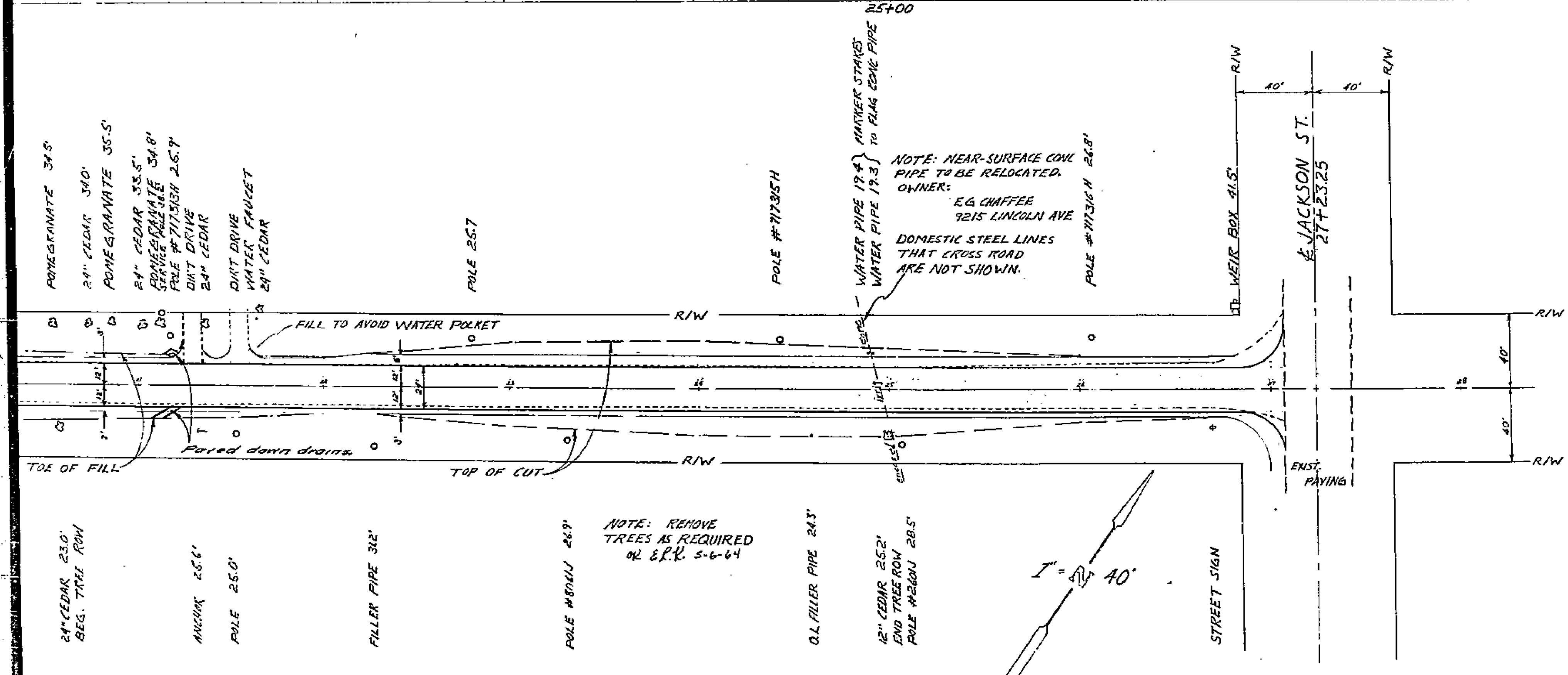
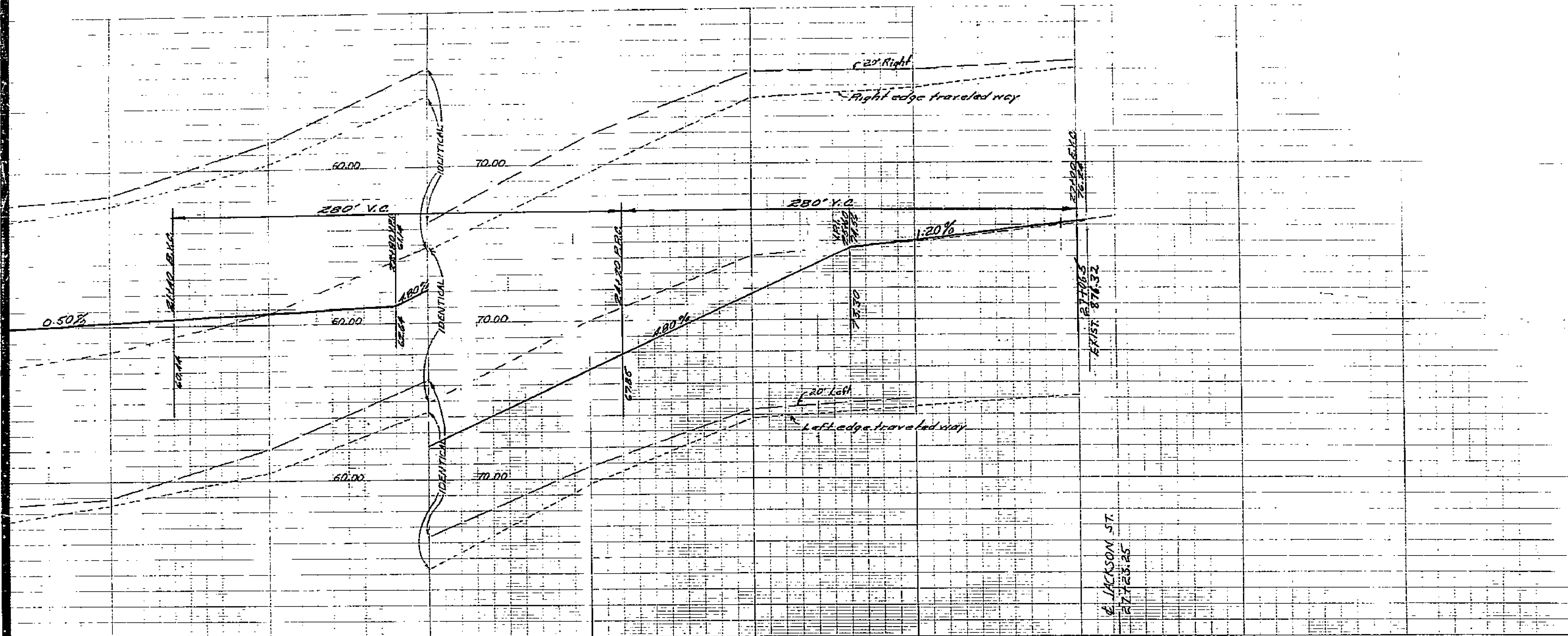
- END ROW 2" ORANGE TREES 23.2'
- BEG. ROW ORANGE TREES 23.8'
- END ROW ORANGE TREES 22.7'
- 1" ORANGE TREE 22.1'
- 1" ORANGE TREE 23.5'
- 18" CYPRESS
- BEG. ROW 4" ORANGE 21.8'
- END ROW 4" ORANGE 24.1'
- 12" CYPRESS 23.2'
- STREET SIGN 18.6'

Notes:
 Please notify M.W.D. for telephone 523-4541, at
 least 48 hours in advance of grading over feeder
 - M.W.D.

LINCOLN AVE PAVING
 VAN BUREN BLVD TO JACKSON ST
 SHEET 2 OF 3
 PLAN No. 1350

1350

1350



TYPICAL SECTIONS
NO SCALE

1350

LINCOLN AVE PAVING
VAN BUREN BLVD TO JACKSON ST
SHEET 3 OF 3
PLAN No. 1350