

PLAN & PROFILE
 NO. 14
 FOR THE CONSTRUCTION OF
 CONCRETE CURB & GUTTER
 IN THE
 TIBBETTS-ARLINGTON
 IMPROVEMENT DISTRICT
 CITY OF RIVERSIDE - CALIFORNIA

SCALES
 FB. 486/56
 494/62
 510/25
 HORIZ 1"=50'
 VERT 1"=5'

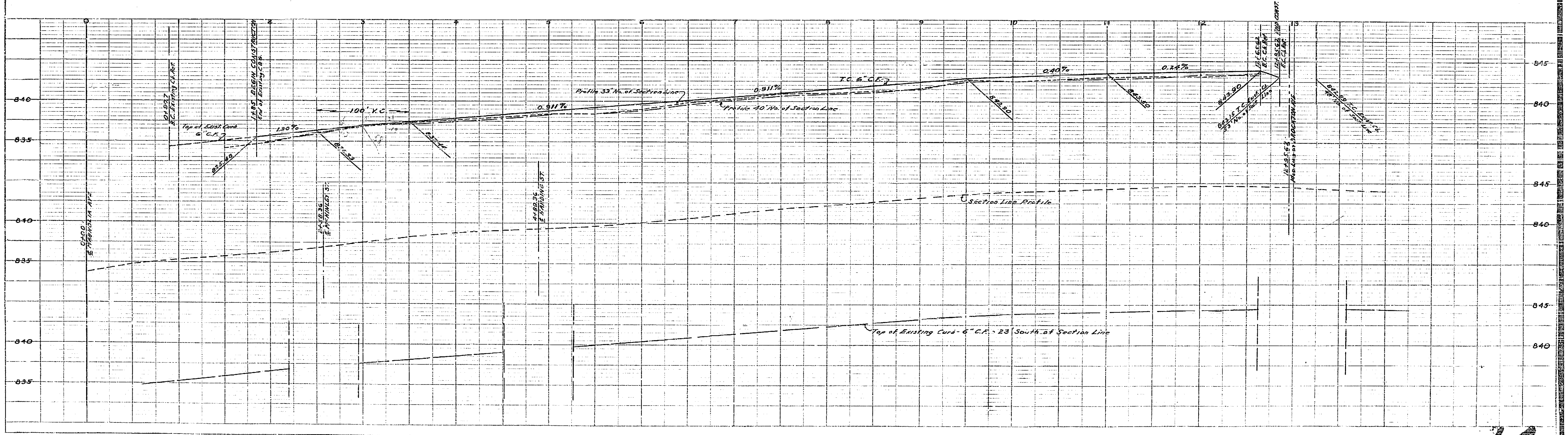
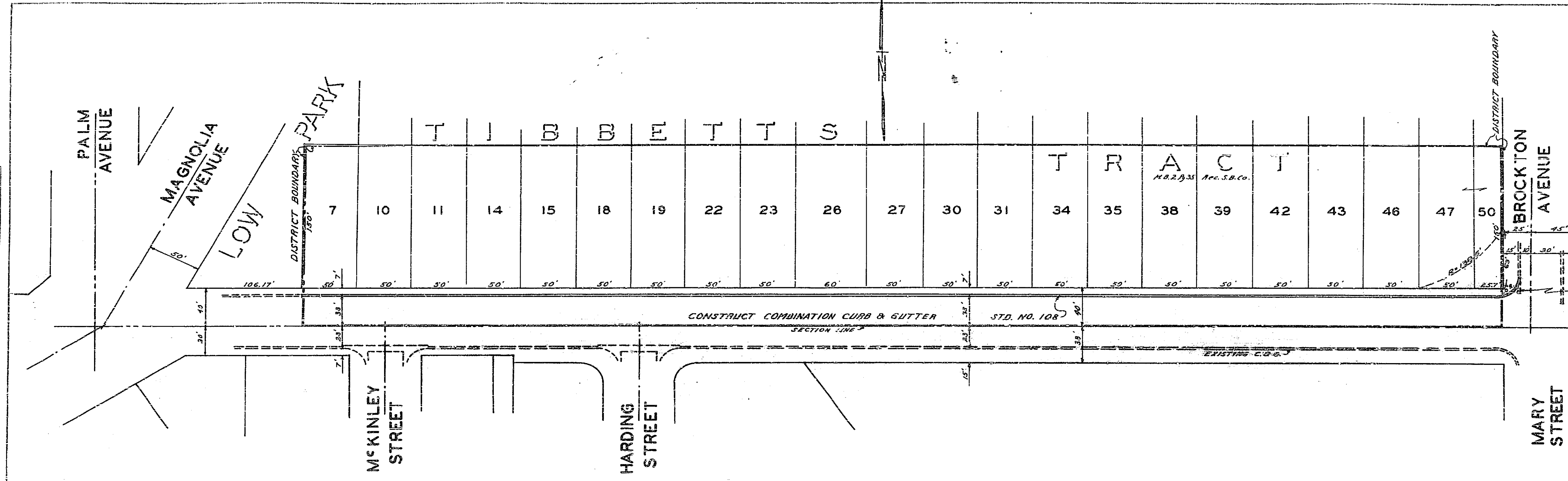
NOTE - Removal of Existing C.G.
 NOT a part of this Contract

ARLINGTON
 AVENUE

APPROVED *M.H. Irvine*
 M.H. IRVINE, REG. C.E. NO. 301
 CITY ENGINEER

THESE PLANS APPROVED AND ADOPTED BY THE
 MAYOR AND COUNCIL OF THE CITY OF RIVERSIDE
 STATE OF CALIFORNIA, ON THIS 10th DAY OF
 MARCH 1952

W. W. Davis
 CITY CLERK



PLAN	31
STATION	31
DATE	
PROJECT	
NOTE BOOK	
ALIGNMENT CHECKS	
BY	
NO.	

PROFILE	31
STATION	31
DATE	
PROJECT	
NOTE BOOK	
ALIGNMENT CHECKS	
BY	
NO.	