

PLAN NO. 140
 FOR THE CONSTRUCTION OF
 A SANITARY SEWER IN
 DENTON STREET
 FROM GROVE AVENUE
 TO VICTORIA AVENUE
 CITY OF RIVERSIDE, CALIFORNIA

F.B. 520/1

SCALES: HORIZ: 1" = 50'
VERT: 1" = 5'

APPROVED: *M. H. Irvine*
 M.H. IRVINE, REG. C.E. NO. 3011
 CITY ENGINEER

THIS PLAN APPROVED AND ADOPTED BY THE
 MAYOR AND COUNCIL OF THE CITY OF RIVERSIDE
 STATE OF CALIFORNIA ON THIS 24TH DAY OF
 FEBRUARY 1953.

W. H. ...
 CITY CLERK

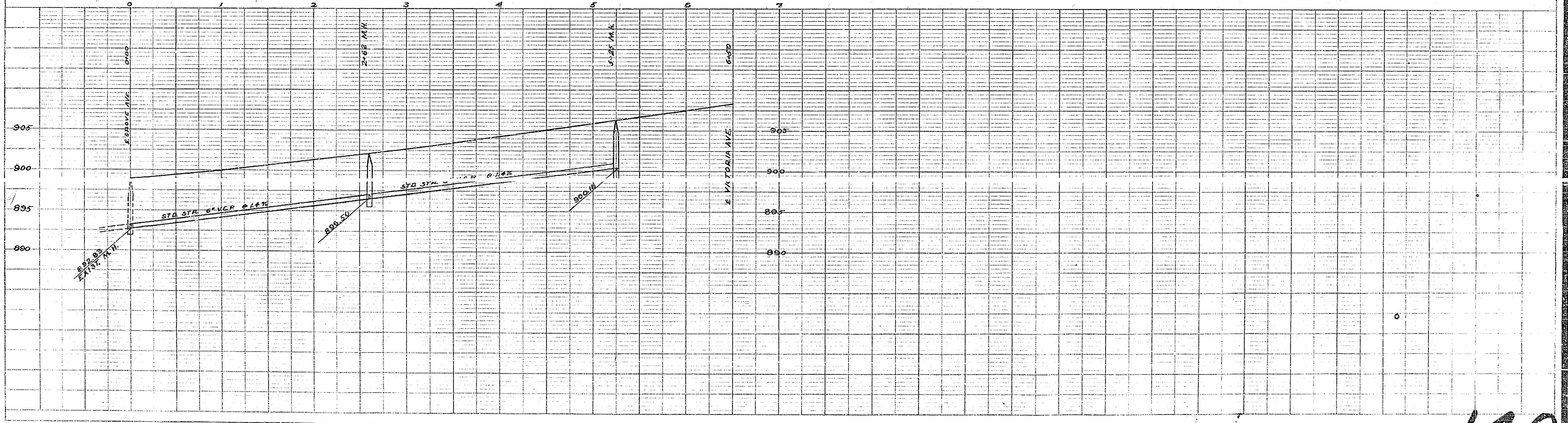
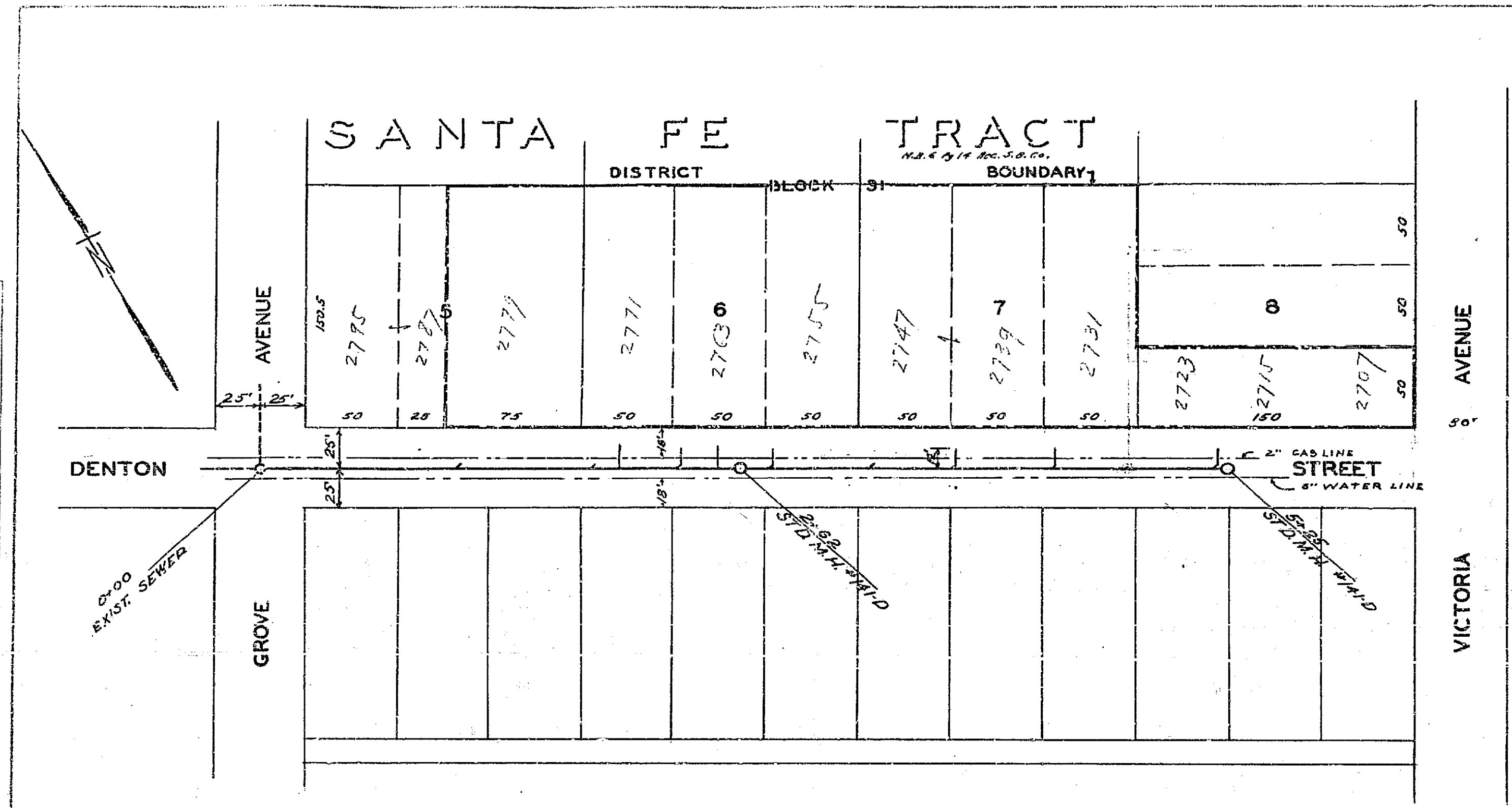


PLATE 1 - PLAN-PROFILE OF P.A. & R.E. STANDARD
 HOFFMAN & ASSOCIATES, NEW YORK
 R.E.C. NO. 3140-10