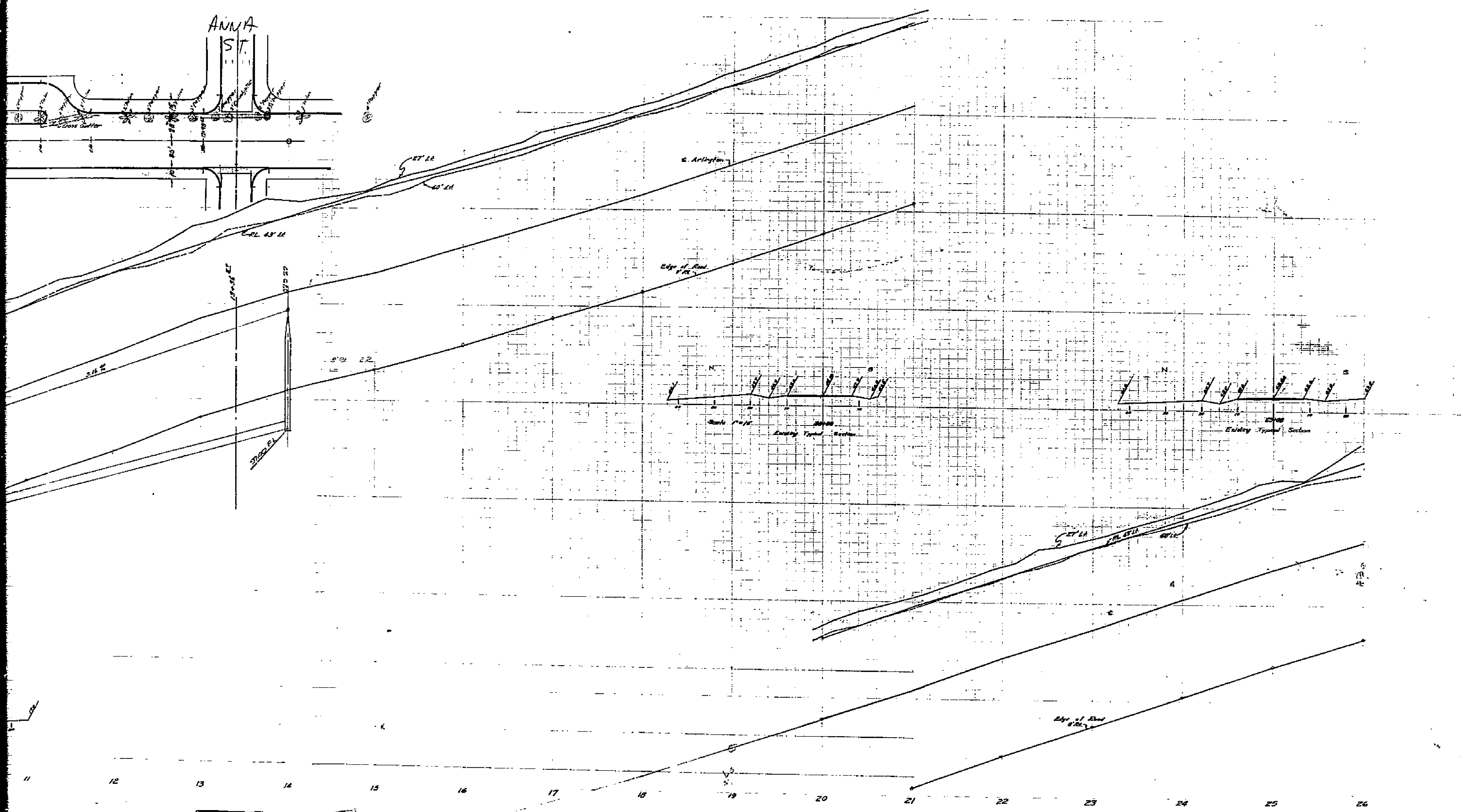


CITY OF PIVERSKE
ENGINEER



Approved by *J. H. Irvine*
CITY ENGINEER

CITY OF PIVERSKE
ENGINEER

PLAN & PROFILE
SUN GOLD TERRACE UNIT NO 7
ARLINGTON AVE.

May 1953 J. F. Davidson, C.E.

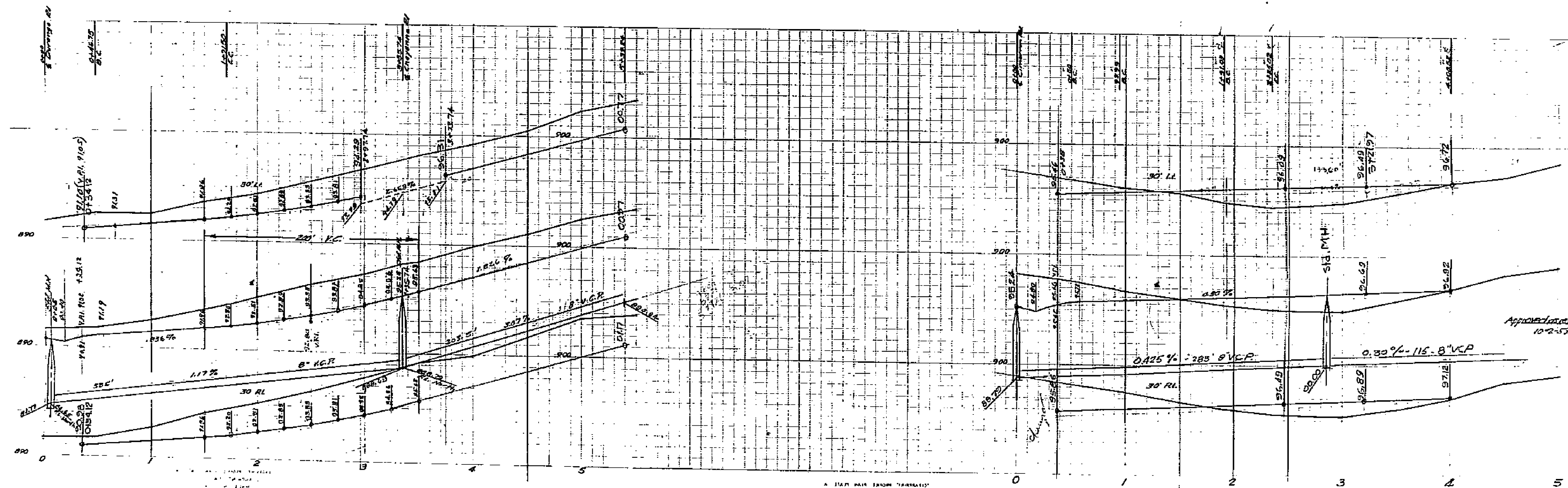
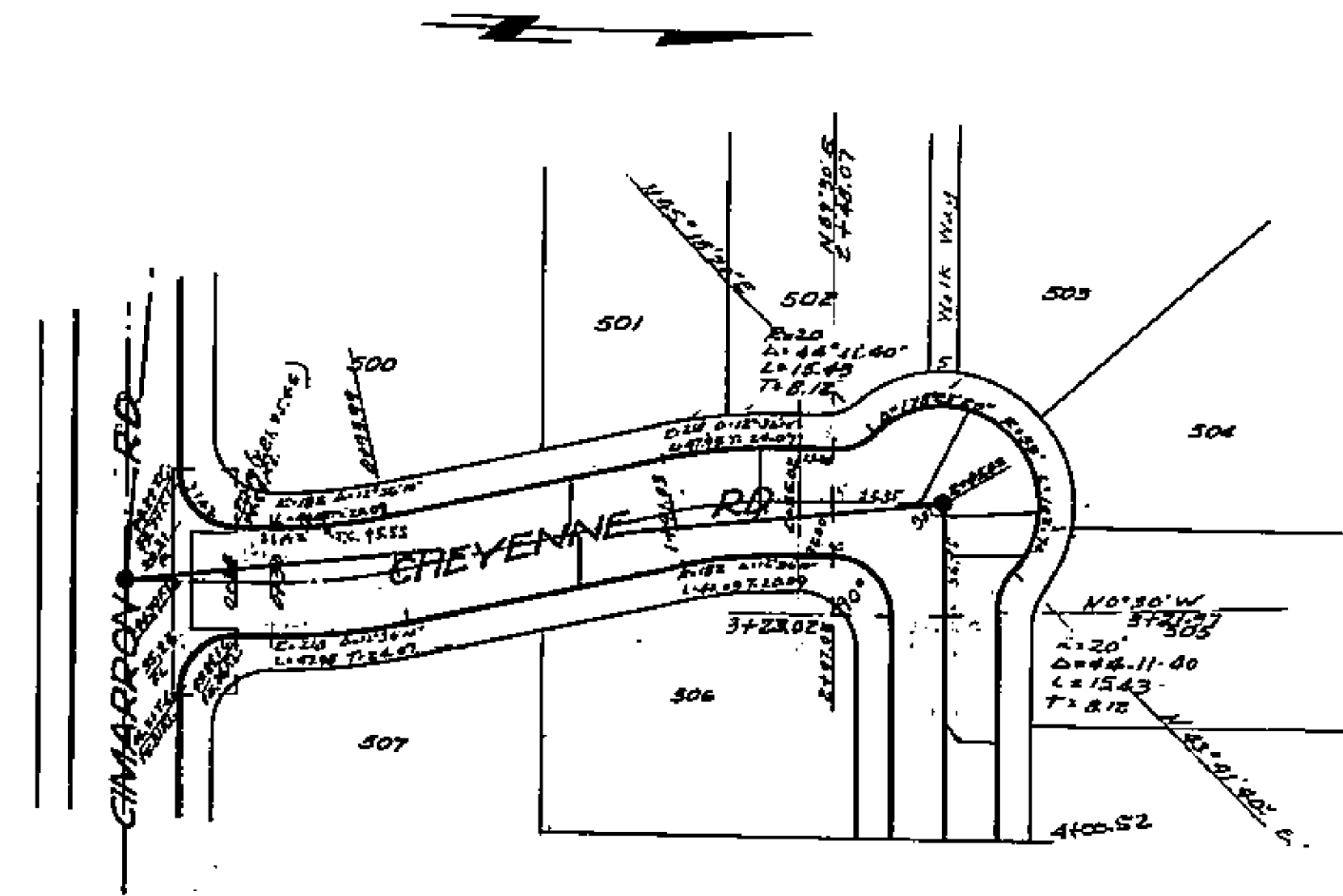
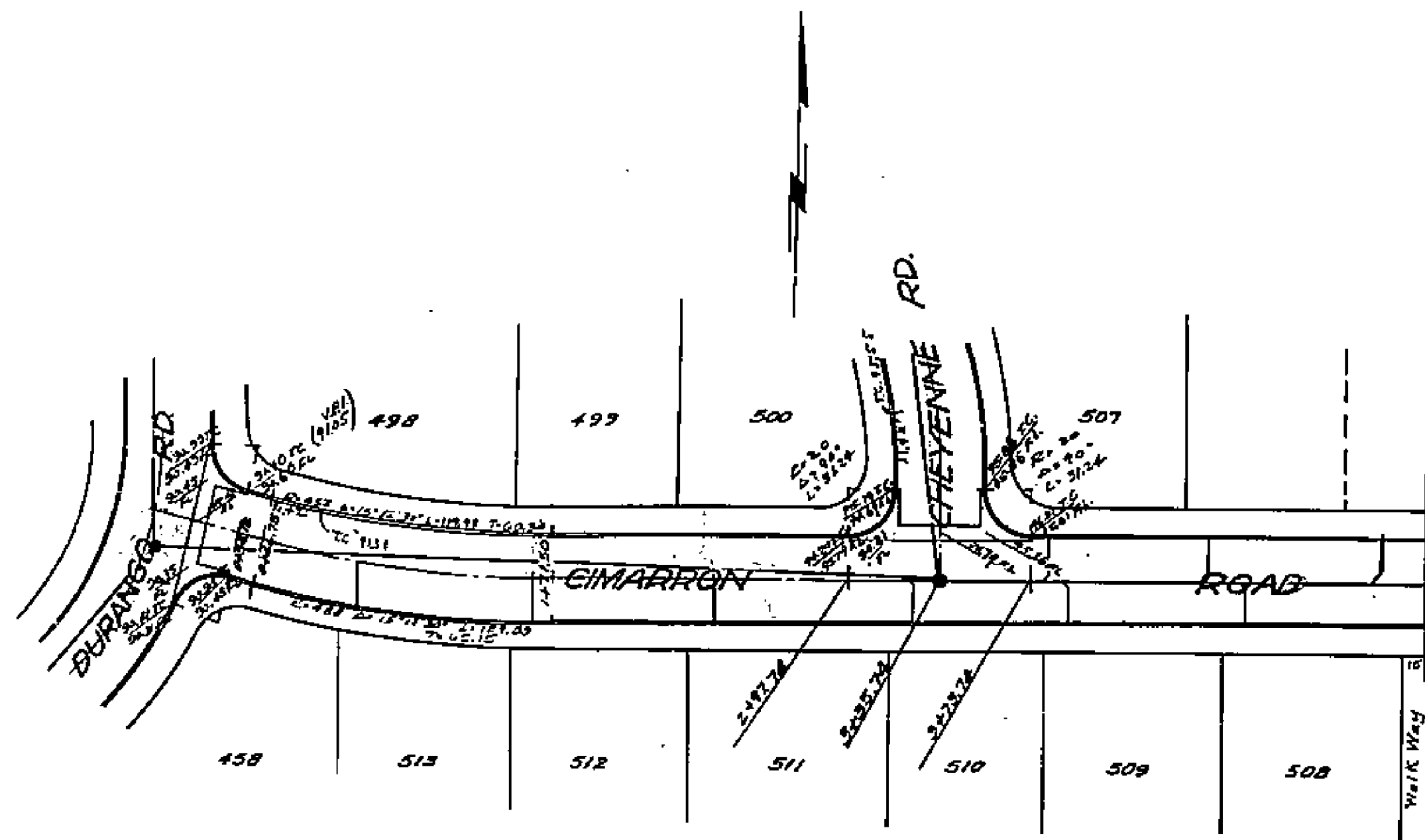
Scale
Hor 1" = 40'
Vert 1" = 4'

P.B. 457 452-47

Reinb. Contr. #14

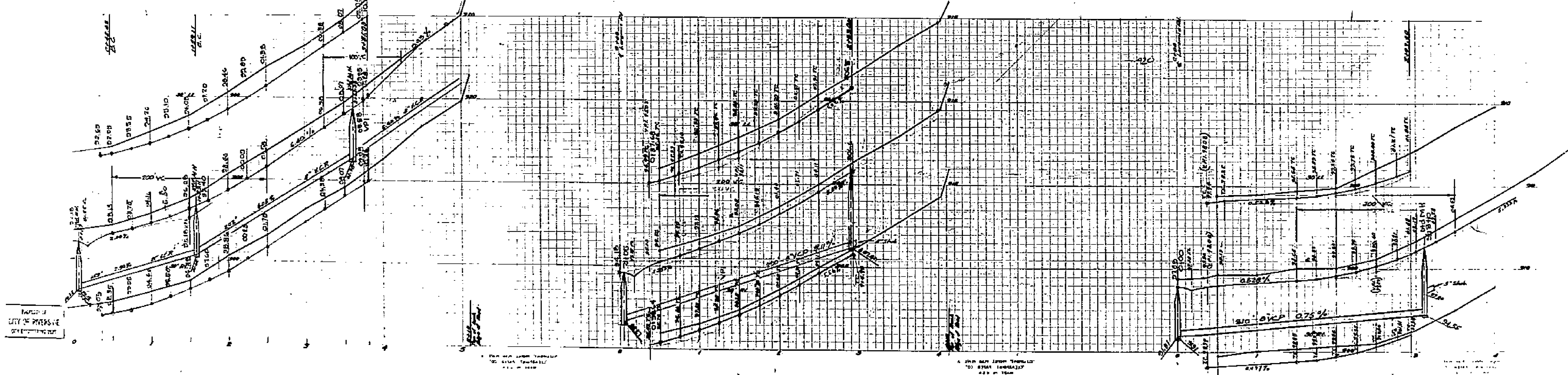
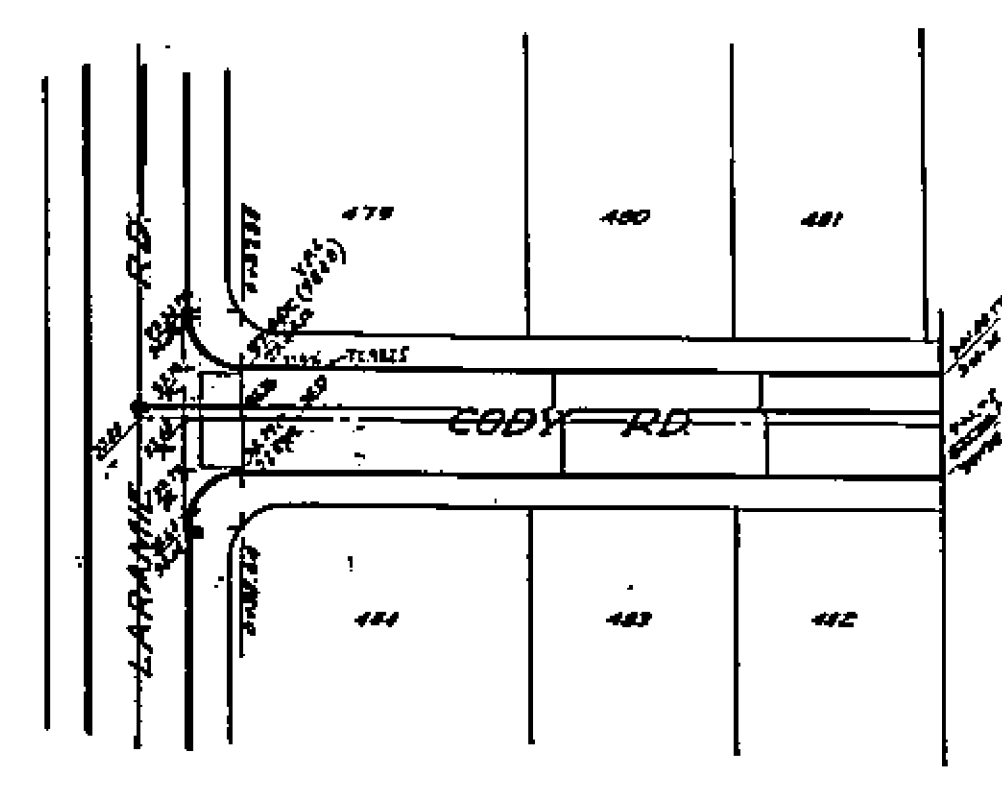
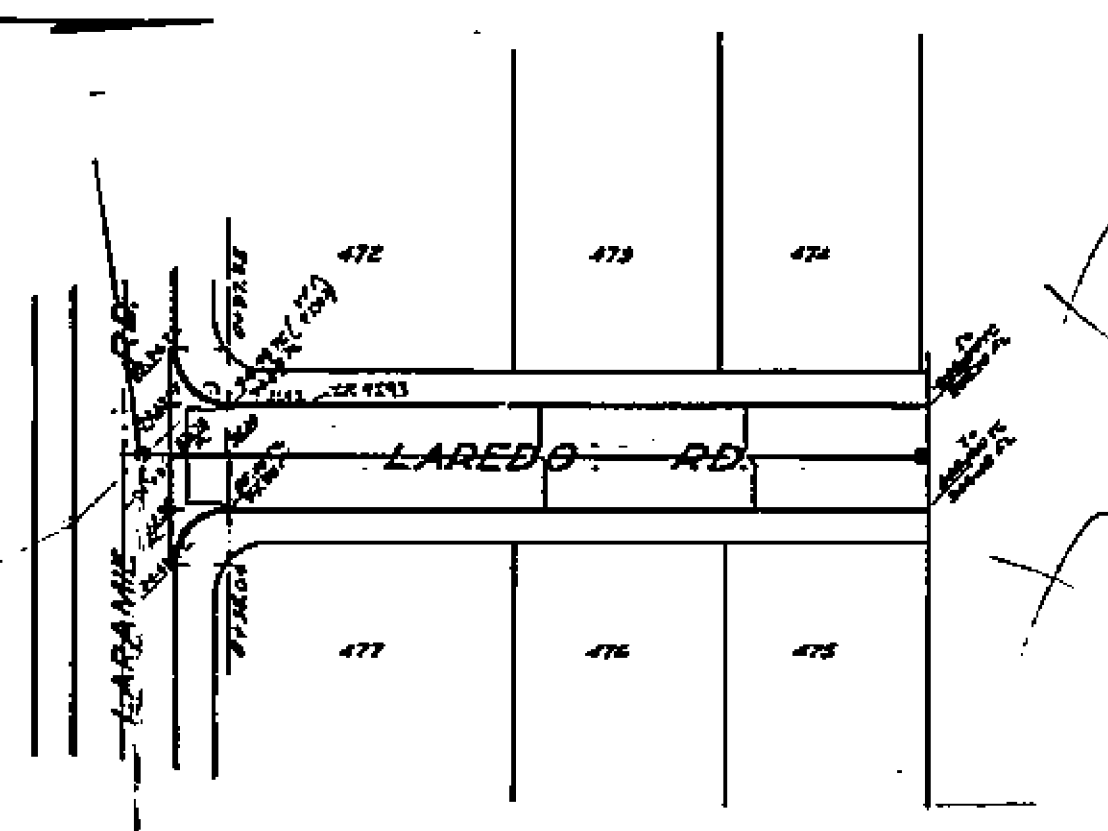
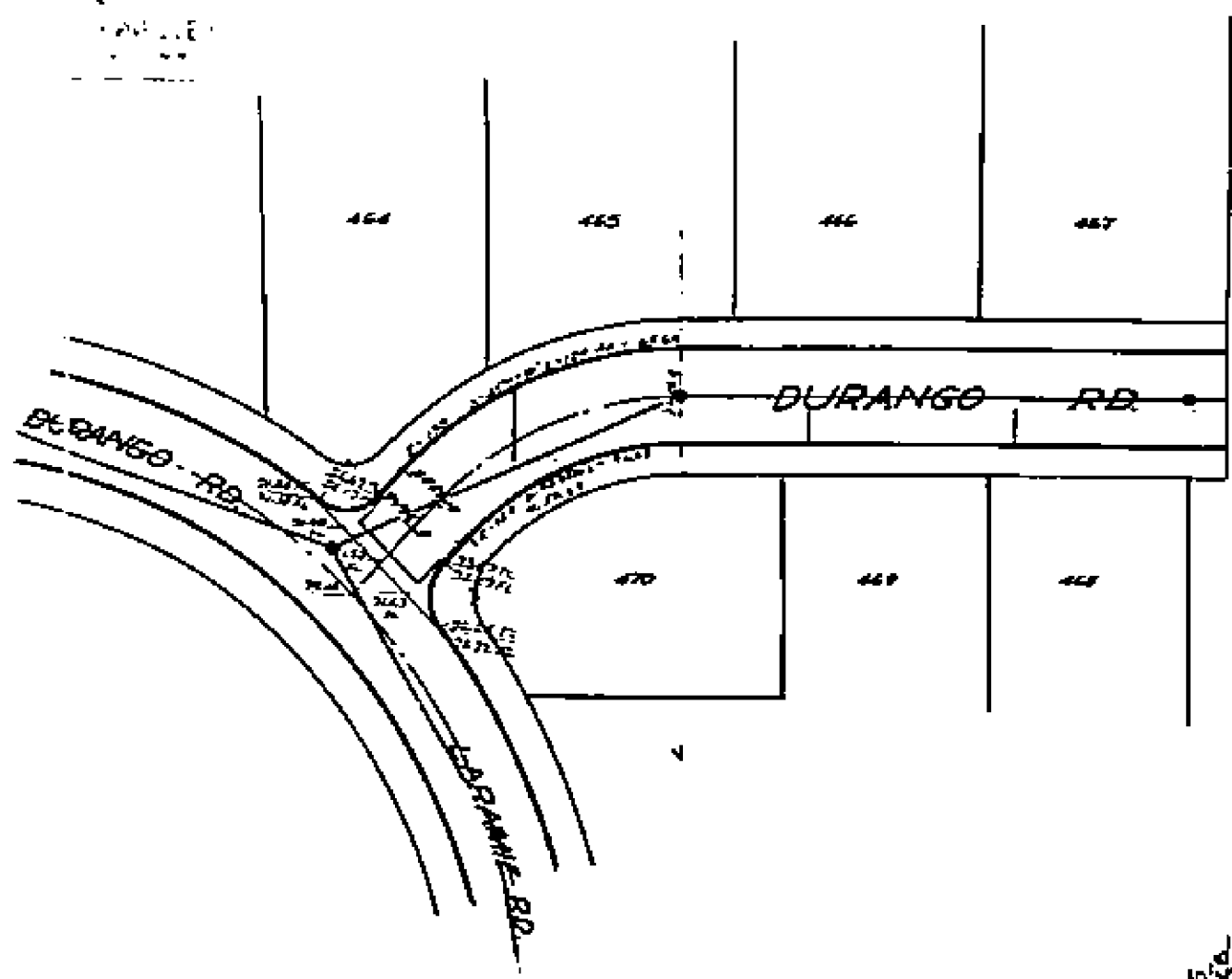
1402

← →
FRAME 1 of 2



Approved by *M. H. Swaine*
 CIVIL ENGINEER
 Approved by *M. H. Swaine*
 10-2-53
 PLAN & PROFILE
 SUN GOLD TERRACE UNIT NO. 7
 CIMARRON RD. - CHEYENNE RD.
 May 1953 J. F. Davidson C.E.
 Scale
 Hor 1" = 40'
 Vert 1" = 4'
 P.B. 437

1402



Approved by *[Signature]*
CITY ENGINEER

Approved on behalf of *[Signature]*
10-2-53

PLAN & PROFILE
SUN GOLD TERRACE UNIT NO. 7
DURANGO RD - LAREDO RD - CODY RD.
May 1953 J.F. Davidson C.E.
Scale
Hor. 1" = 40'
Vert. 1" = 4'
P.M. #37

403

PROPERTY OF
CITY OF RIVERSIDE
CITY ENGINEERING DEPT.

PROPERTY OF
CITY OF RIVERSIDE
CITY ENGINEERING DEPT.

SEE ALSO EXISTING
PLAN # 17014

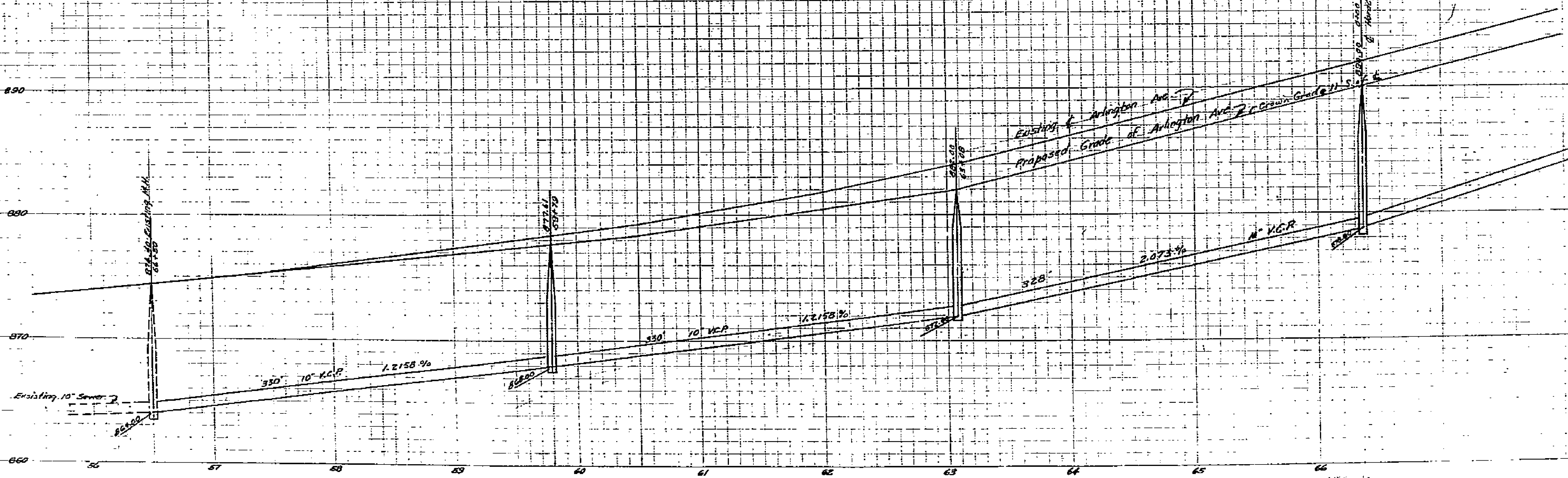
See other sheet

See other sheet

M.H.

M.H.

HORACE



Approved by *M.H. Jarric*
CITY ENGINEER

PLAN & PROFILE
ARLINGTON AVENUE

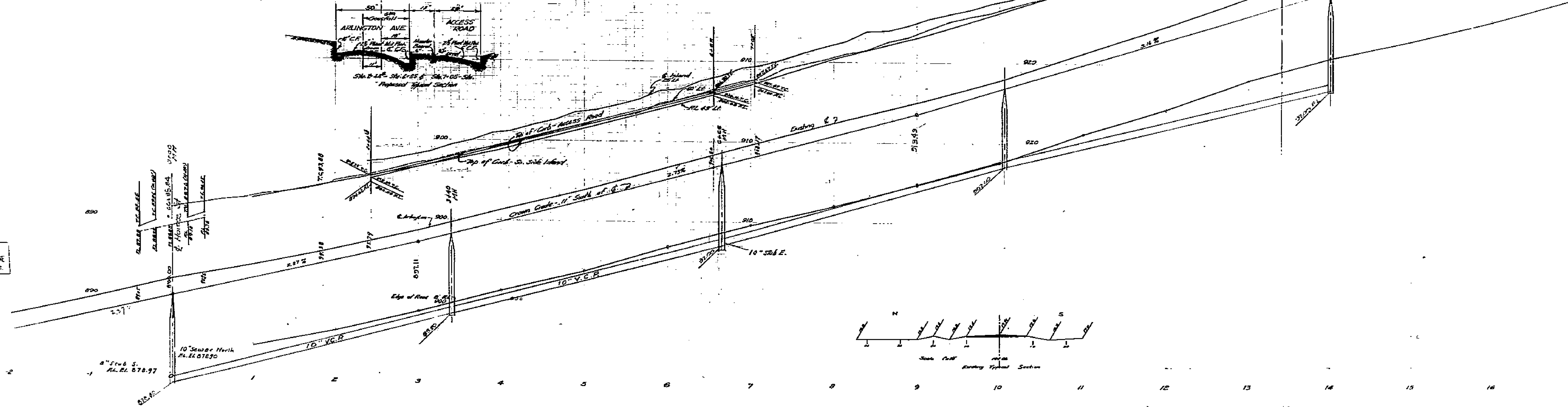
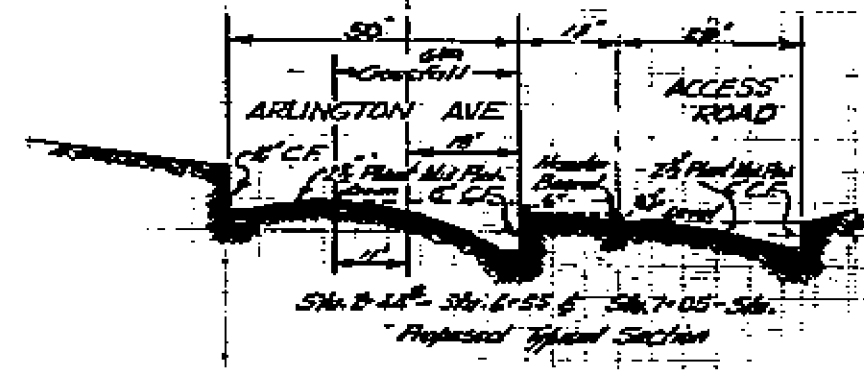
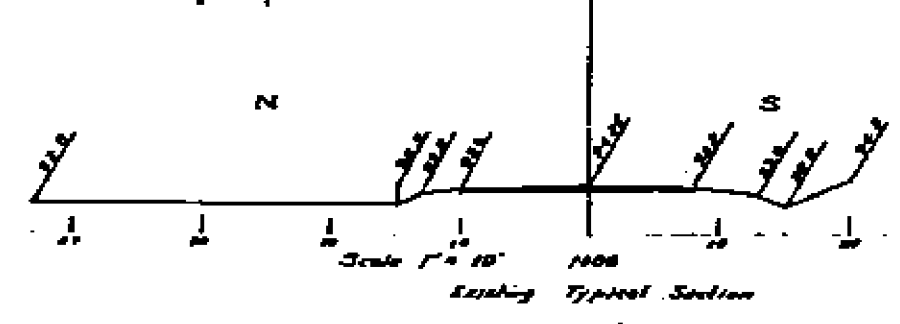
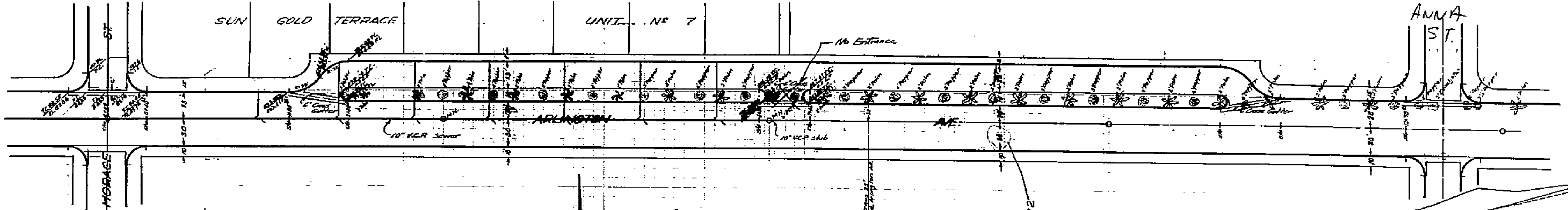
July 1953 J.F. DAVIDSON, C.E.

Scale
Hor. 1"=40'
Vert. 1"=8'

PROPERTY OF
CITY OF RIVERSIDE
CITY ENGINEERING DEPT.

1402

PROPERTY OF
CITY OF RIVERSIDE
BY ENGINEER'S DEPT.



PROPERTY OF
CITY OF RIVERSIDE
BY ENGINEER'S DEPT.

FRAME 2 of 2

