

# STREET PLAN AND PROFILE

## MAGNOLIA FIELDS

ALBERT A. WEBB ASSOCIATES  
CIVIL ENGINEERS

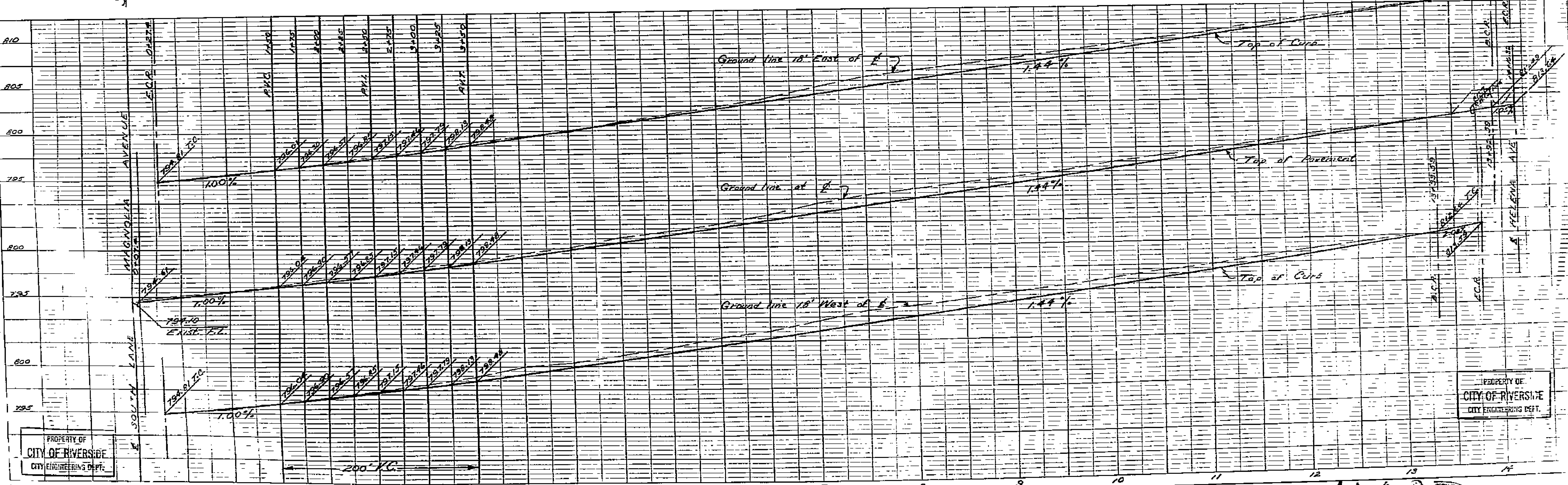
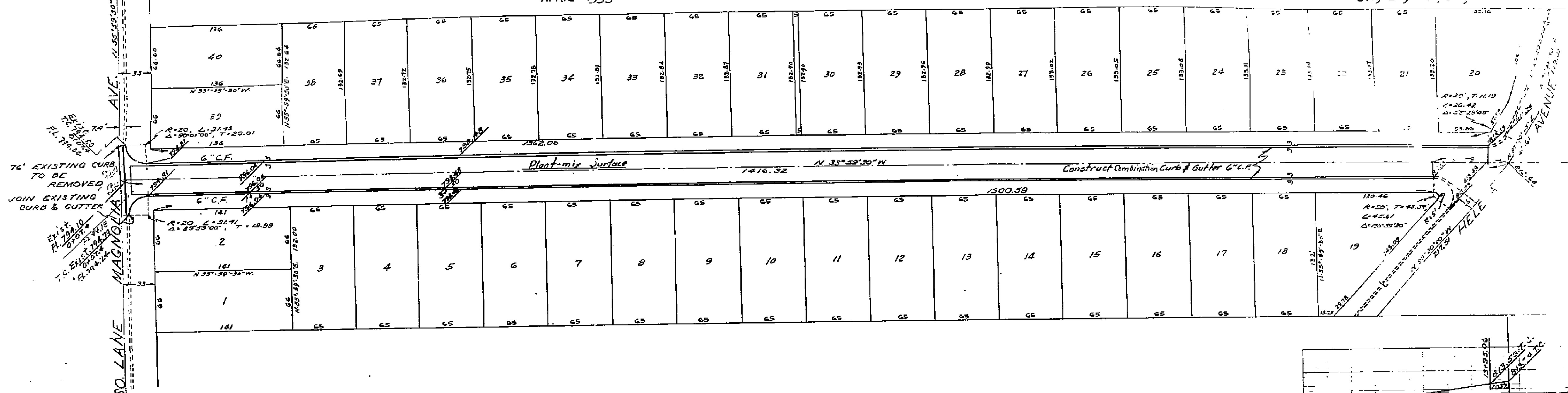
APRIL 1953

SCALE: 1"=50'

Approved this 12th day of June 1953  
City Engineer, City of Riverside

PROPERTY OF  
CITY OF RIVERSIDE  
CITY ENGINEERING DEPT.

PROPERTY OF  
CITY OF RIVERSIDE  
CITY ENGINEERING DEPT.



PROPERTY OF  
CITY OF RIVERSIDE  
CITY ENGINEERING DEPT.

PROPERTY OF  
CITY OF RIVERSIDE  
CITY ENGINEERING DEPT.

1403



PROPERTY OF  
CITY OF RIVERSIDE  
CITY ENGINEERING DEPT.

PROPERTY OF  
CITY OF RIVERSIDE  
CITY ENGINEERING DEPT.

# STREET PLAN AND PROFILE OF HELENA AVENUE IN MAGNOLIA FIELDS

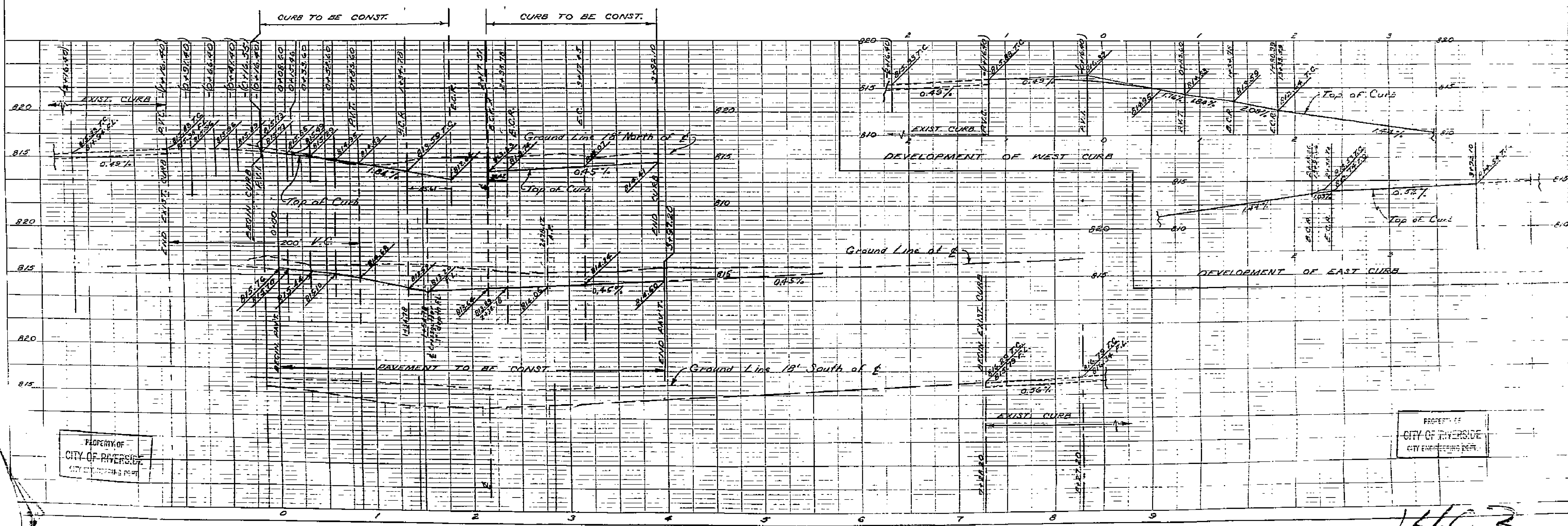
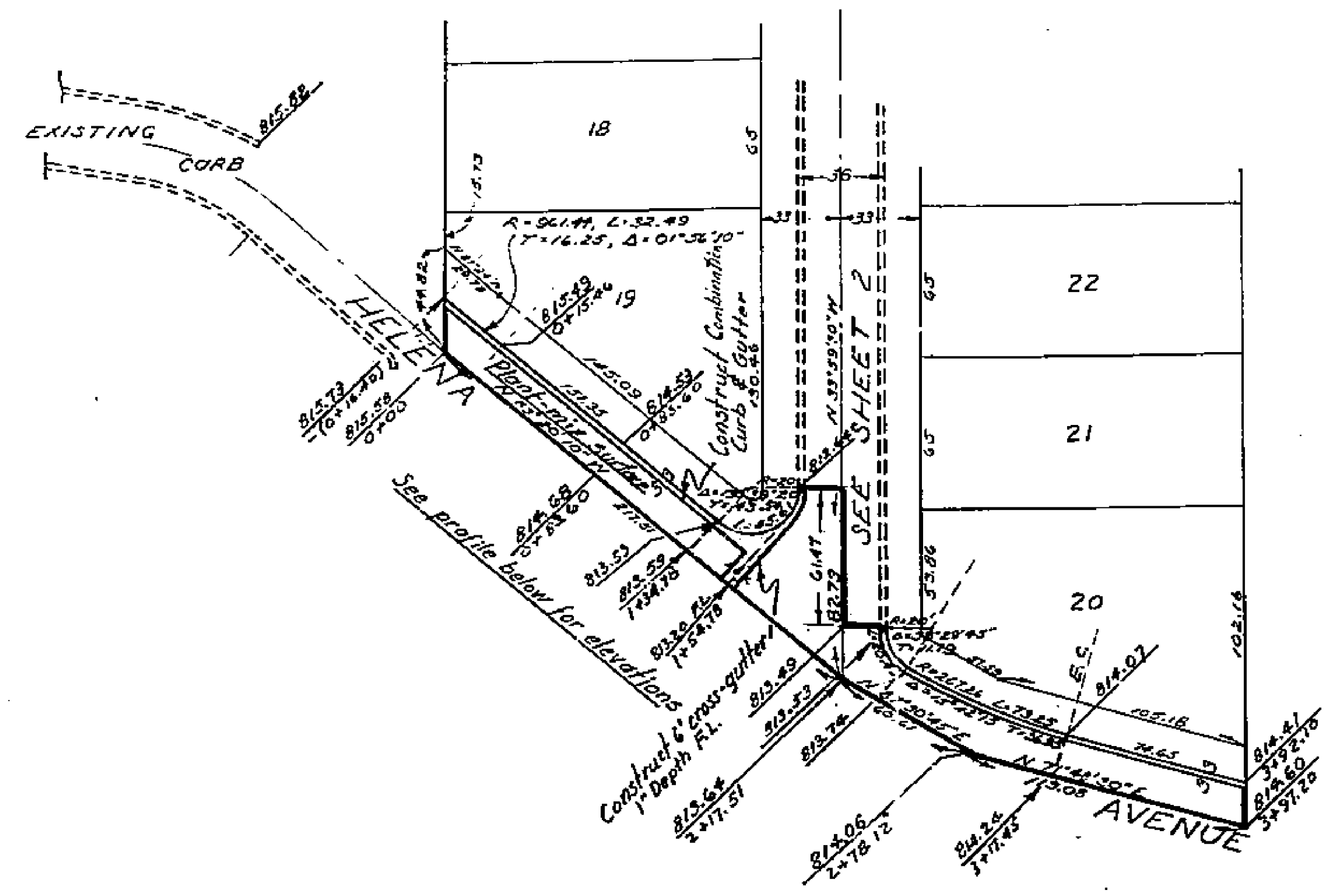
ALBERT A. WEBB ASSOC.  
CIVIL ENGINEERS

APRIL 1953

SCALE: 1"=50'

Approved this 17<sup>th</sup> day of APR, 1953.  
W. H. Irvine  
City Engineer, City of Riverside

PLAN



PROPERTY OF  
CITY OF RIVERSIDE  
CITY ENGINEERING DEPT.

PROPERTY OF  
CITY OF RIVERSIDE  
CITY ENGINEERING DEPT.

1403

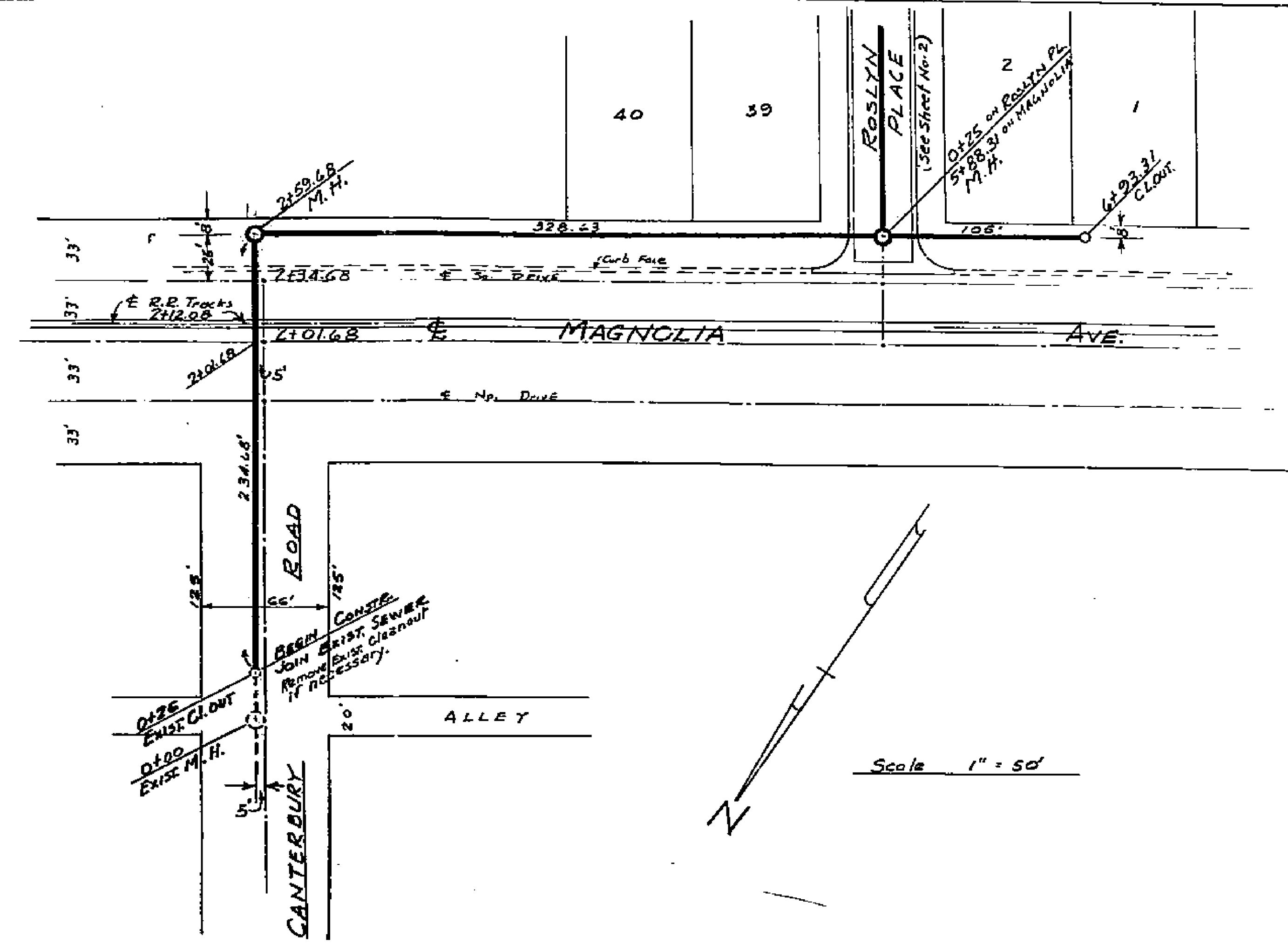


PROPERTY OF  
CITY OF RIVERSIDE  
CITY ENGINEERING DEPT.

SEWER PLAN & PROFILE  
FOR  
MAGNOLIA FIELDS SUBD

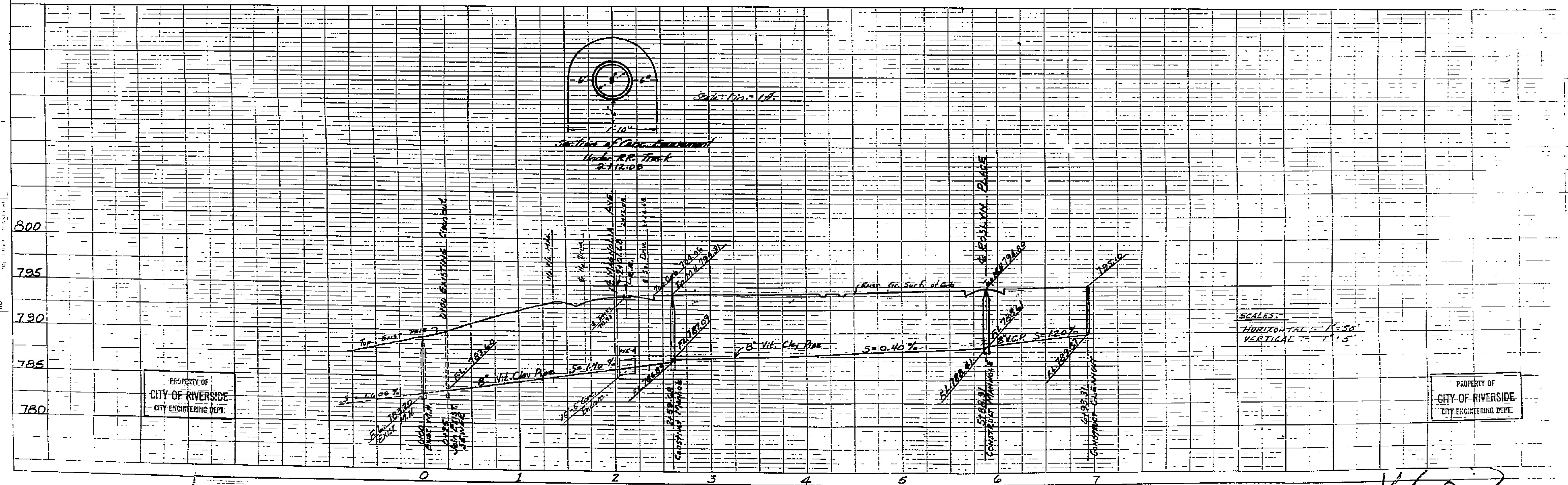
PROPERTY OF  
CITY OF RIVERSIDE  
CITY ENGINEERING DEPT.

BY  
ALBERT A. WEBB ASSOCIATES  
CIVIL ENGINEERS  
DECEMBER 1953



APPROVED Jan 13 1954

BY W. H. Brown  
CITY ENGINEER



PROPERTY OF  
CITY OF RIVERSIDE  
CITY ENGINEERING DEPT.

PROPERTY OF  
CITY OF RIVERSIDE  
CITY ENGINEERING DEPT.

1403