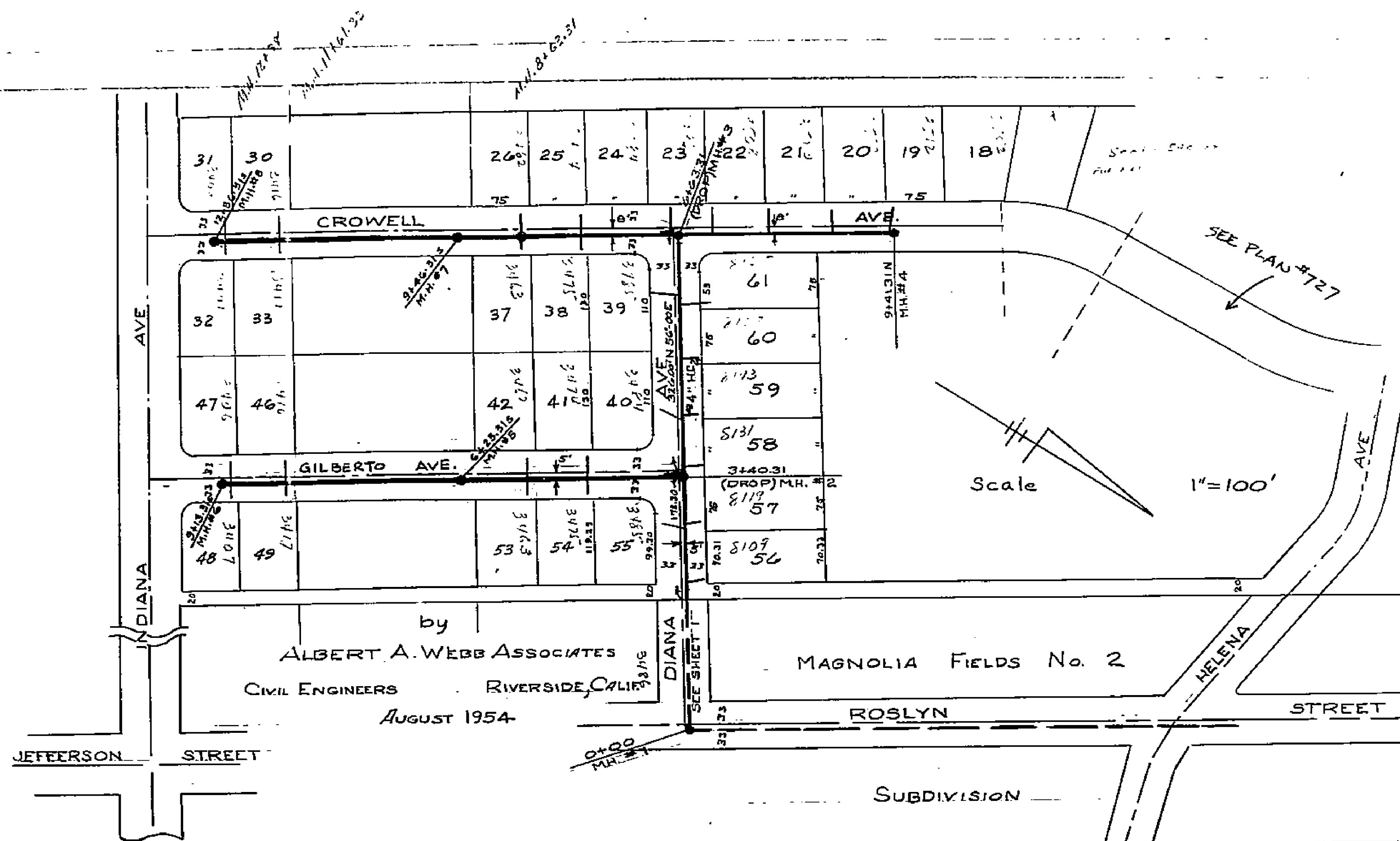


SEWER PLAN & PROFILE
OF
DIANA, CROWELL & GILBERTO
IN
CROWELL GARDENS

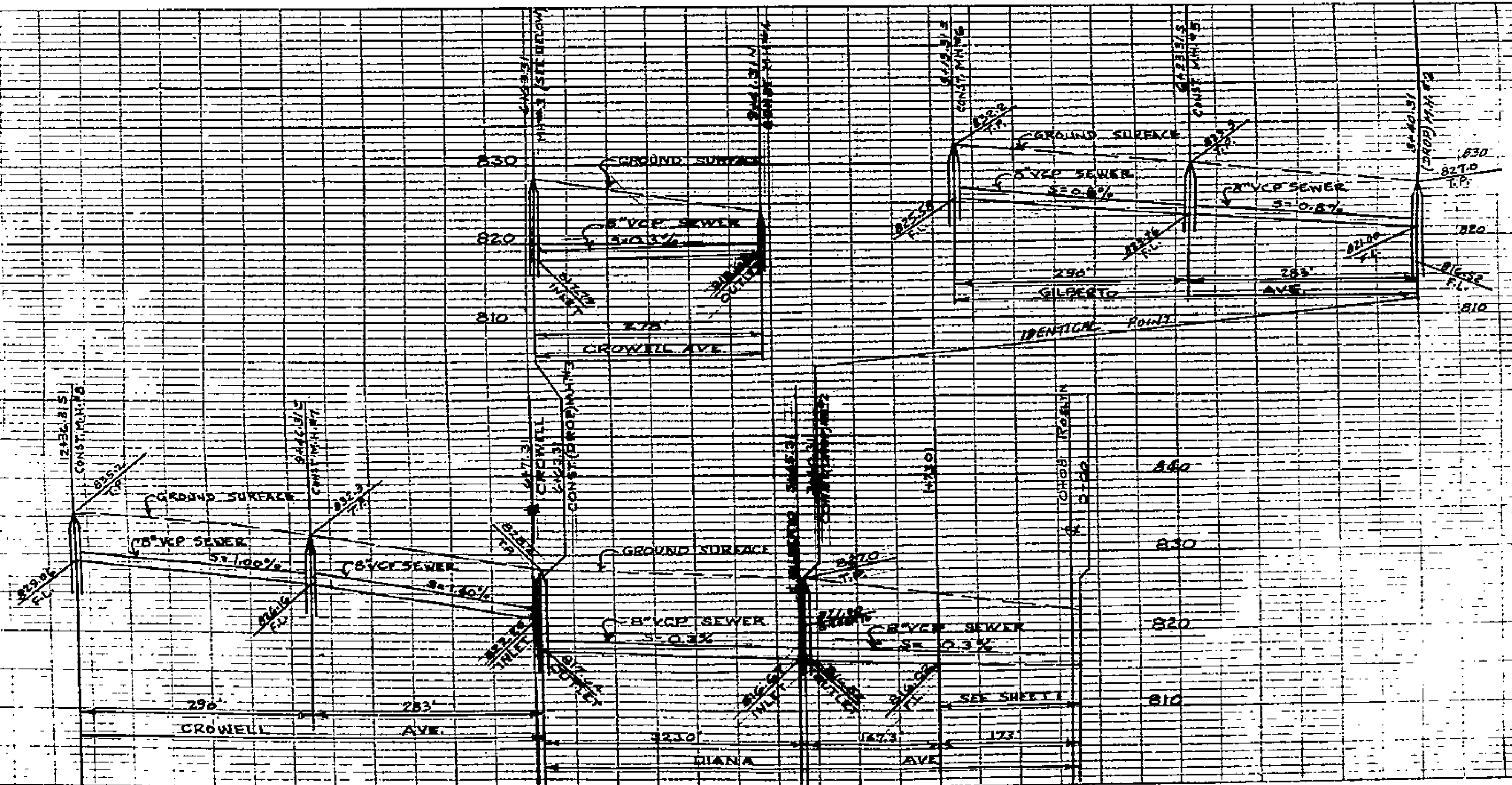
PROPERTY OF
CITY OF RIVERSIDE
ENGINEERING DEPT.



PROPERTY OF
CITY OF RIVERSIDE
ENGINEERING DEPT.

APPROVED Sept. 1, 1954
by M. H. Irvine
CITY ENGINEER

by
ALBERT A. WEBB ASSOCIATES
CIVIL ENGINEERS RIVERSIDE, CALIF.
August 1954



PROPERTY OF
CITY OF RIVERSIDE
ENGINEERING DEPT.

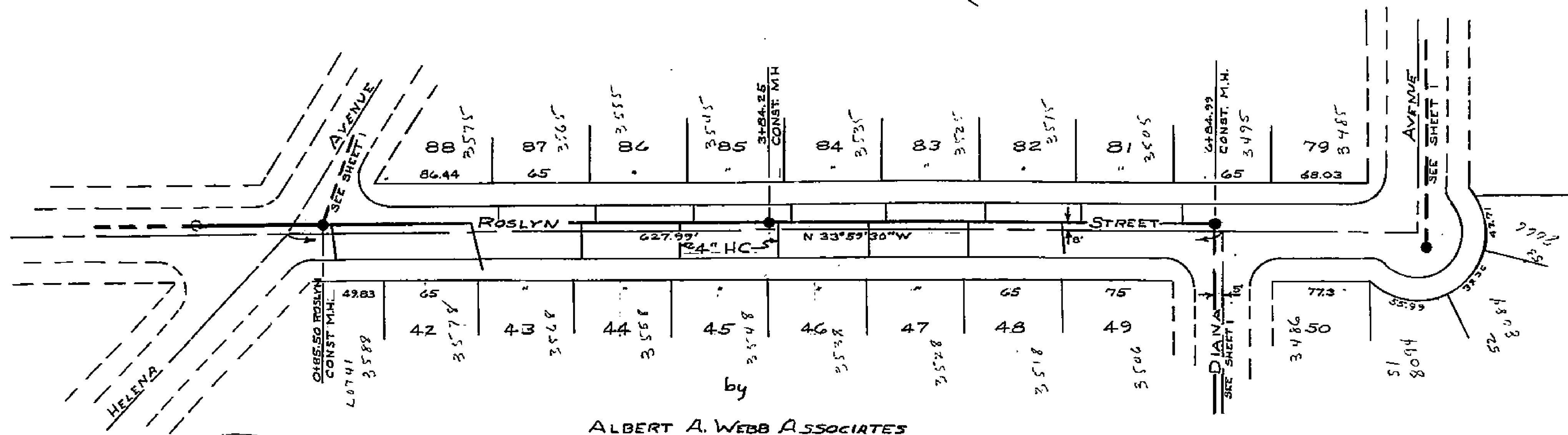
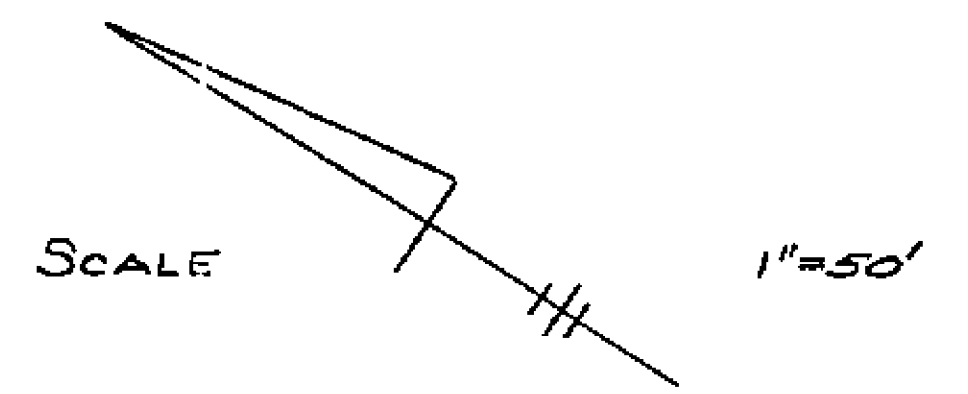
PROPERTY OF
CITY OF RIVERSIDE
ENGINEERING DEPT.

7403A

PROPERTY OF
CITY OF RIVERSIDE
ENGINEERING DEPT.

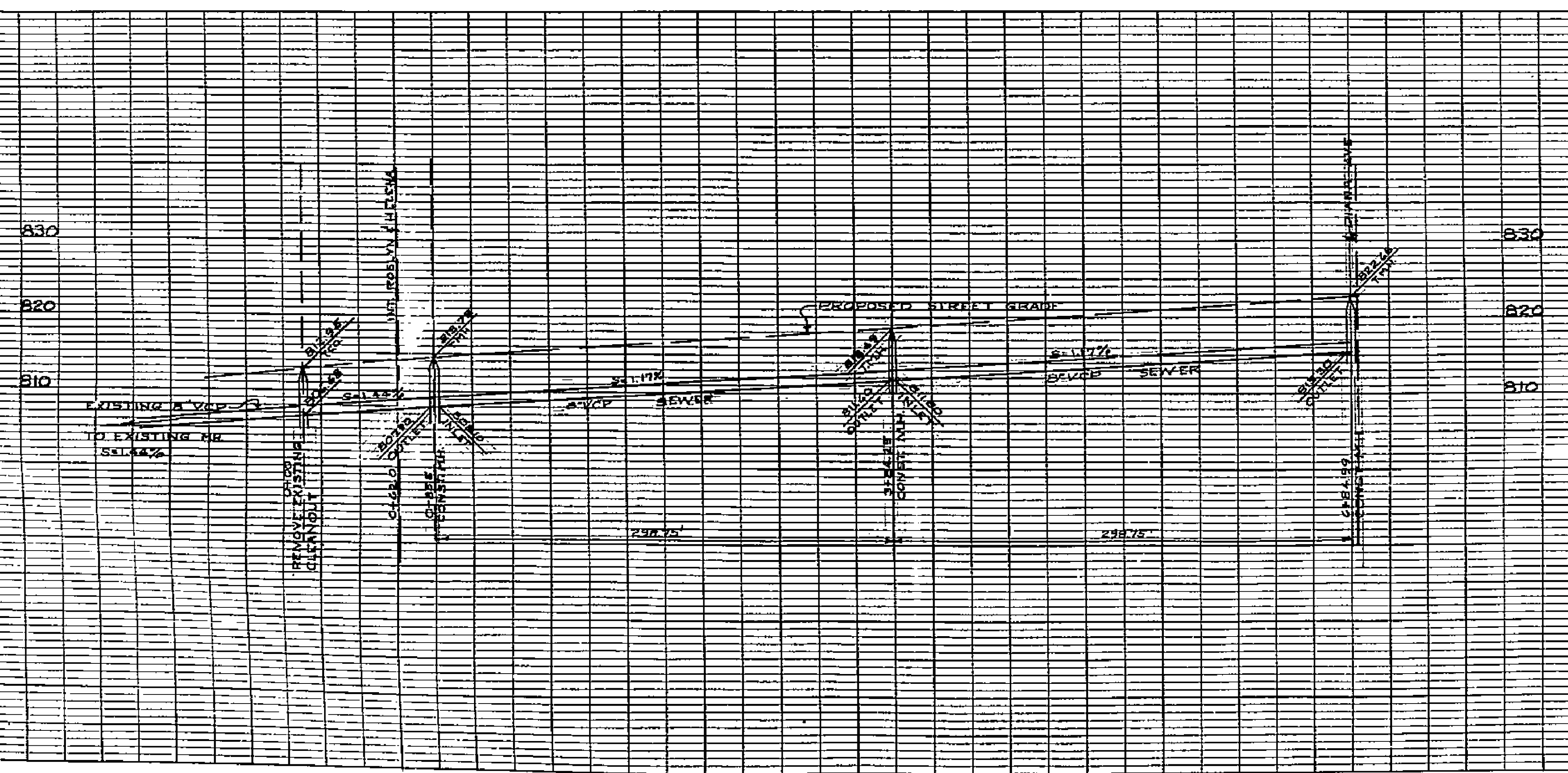
SEWER PLAN & PROFILE
for
ROSLYN STREET
in
MAGNOLIA FIELDS SUBDIVISION
No. 2

PROPERTY OF
CITY OF RIVERSIDE
ENGINEERING DEPT.



by
ALBERT A. WEBB ASSOCIATES
CIVIL ENGINEERS RIVERSIDE, CALIFORNIA
AUGUST 1954

APPROVED Sept. 1, 1954
by M. H. Davine
CITY ENGINEER



PROPERTY OF
CITY OF RIVERSIDE
ENGINEERING DEPT.

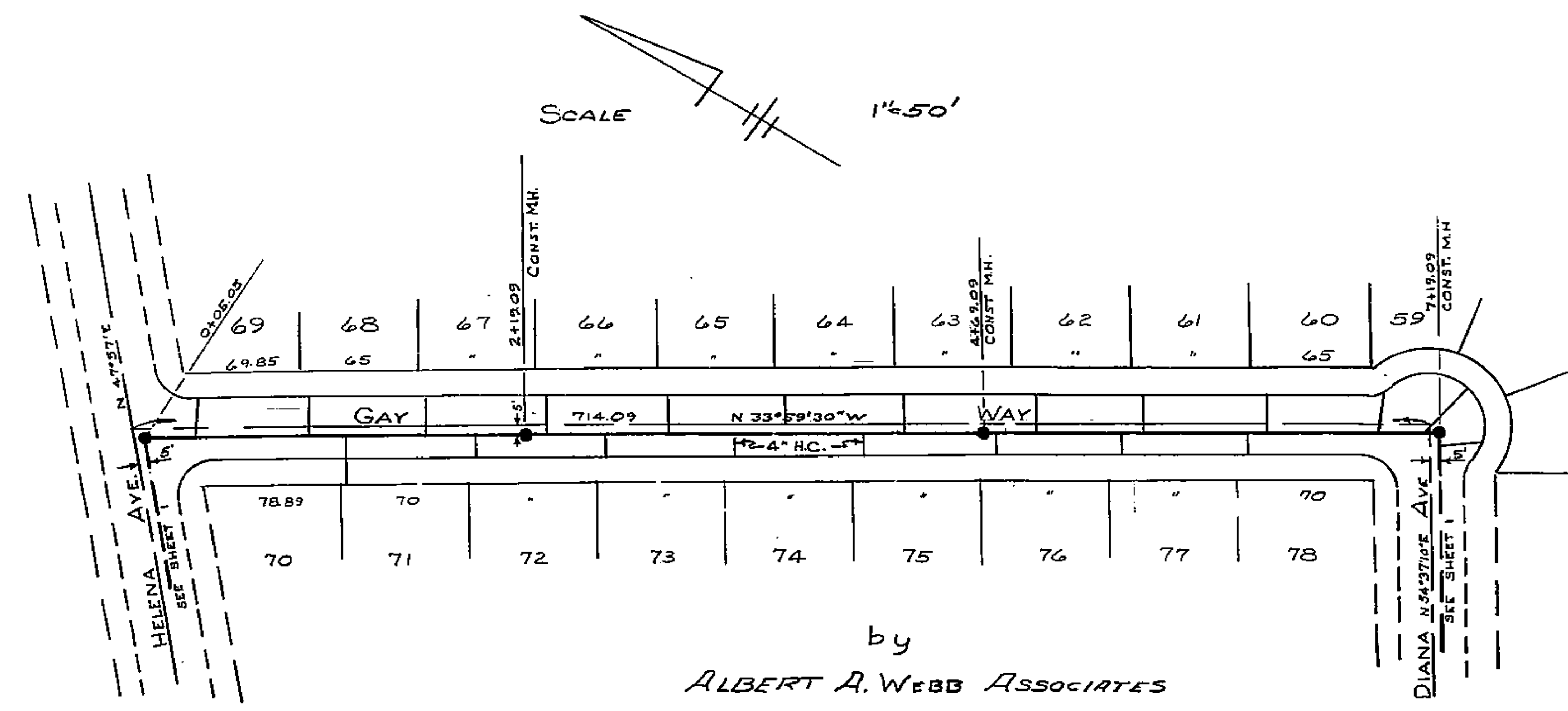
PROPERTY OF
CITY OF RIVERSIDE
ENGINEERING DEPT.

1403A

PROPERTY OF
CITY OF RIVERSIDE
CITY ENGINEERING DEPT.

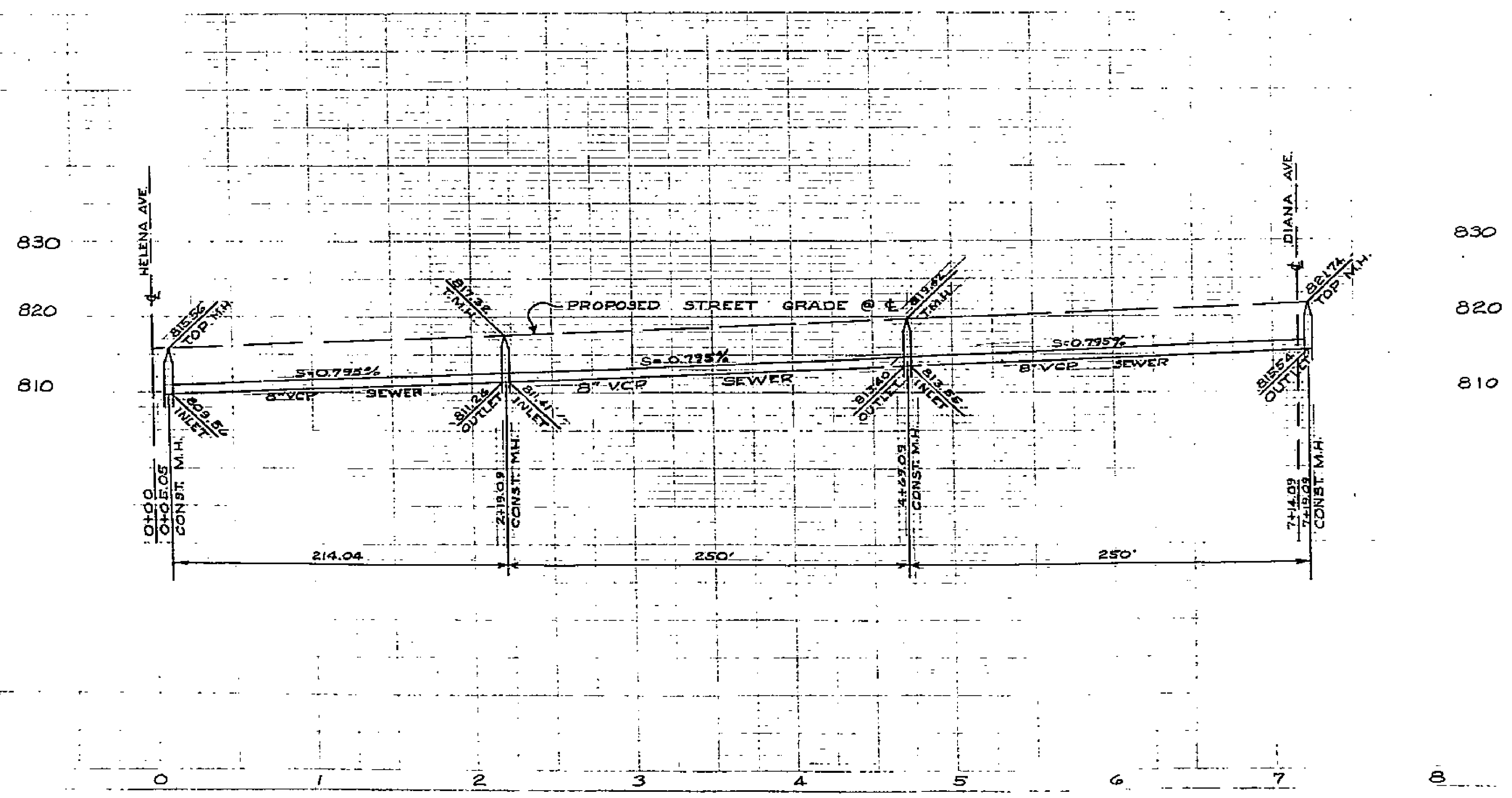
SEWER PLAN & PROFILE
for
GAY WAY
in
MAGNOLIA FIELDS SUBDIVISION
No. 2

PROPERTY OF
CITY OF RIVERSIDE
CITY ENGINEERING DEPT.



by
ALBERT A. WEBB ASSOCIATES
CIVIL ENGINEERS RIVERSIDE, CALIFORNIA
AUGUST 1954

APPROVED *Sept. 1, 1954*
by *M. H. Quinn*
CITY ENGINEER

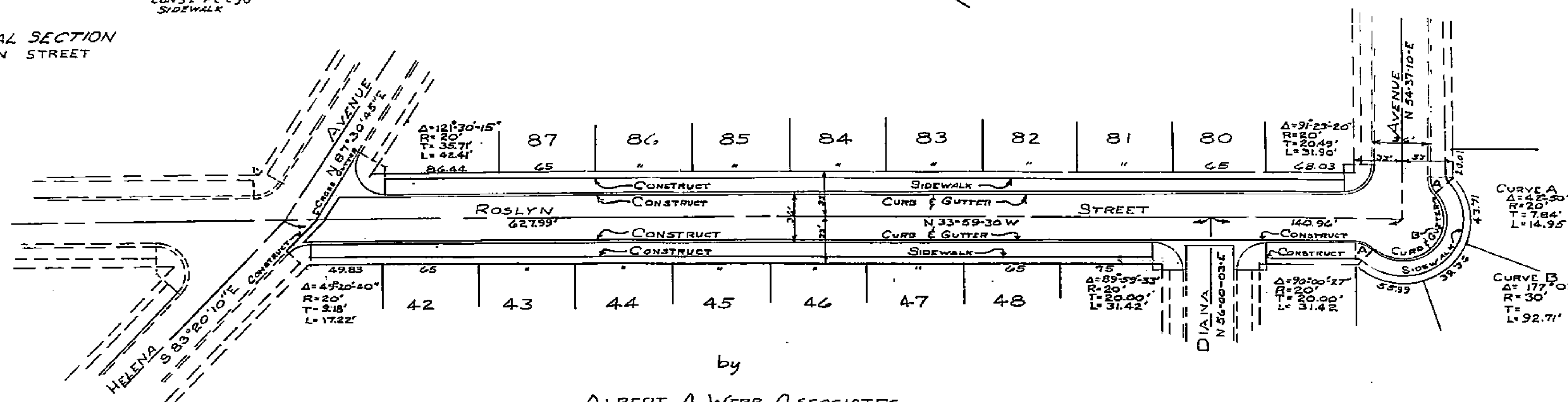
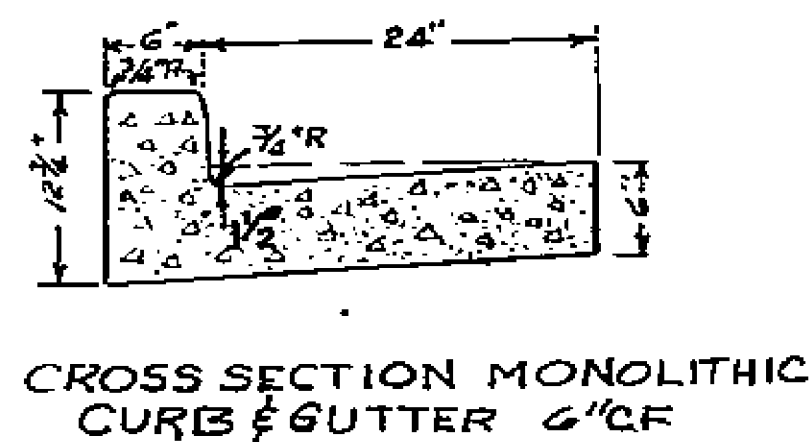
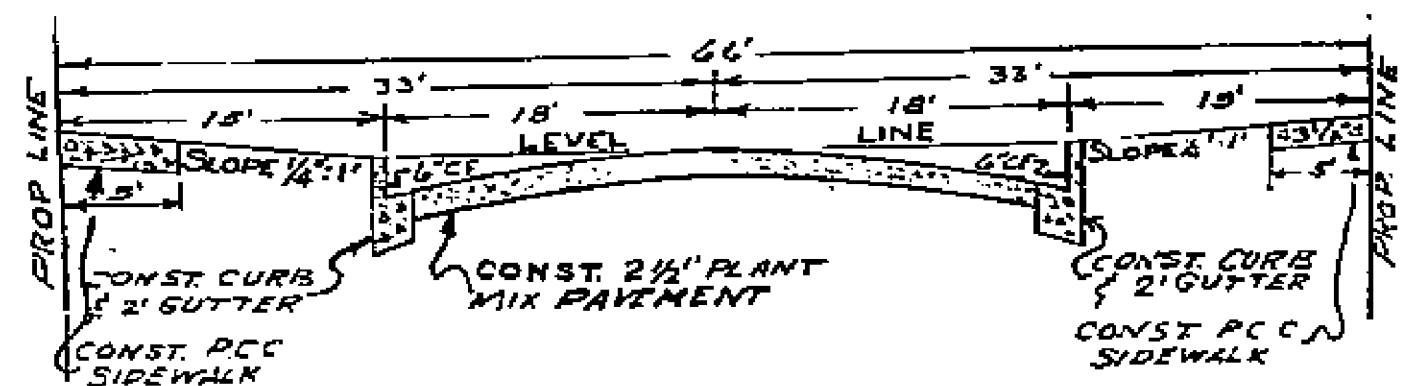


PROPERTY OF
CITY OF RIVERSIDE
CITY ENGINEERING DEPT.

PROPERTY OF
CITY OF RIVERSIDE
CITY ENGINEERING DEPT.

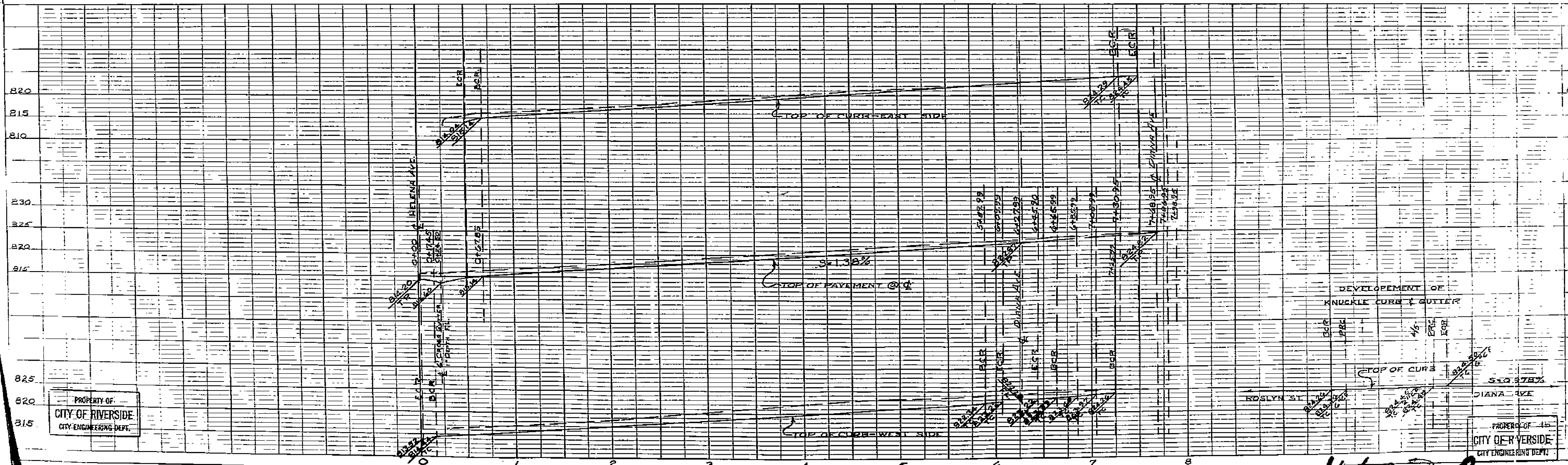
1403A

SCALE 1"=50'



by
ALBERT A. WEBB ASSOCIATES
CIVIL ENGINEERS RIVERSIDE, CALIFORNIA
AUGUST 1954

APPROVED Sept. 1, 1954
by M. H. Irvine
CITY ENGINEER



1403-A

