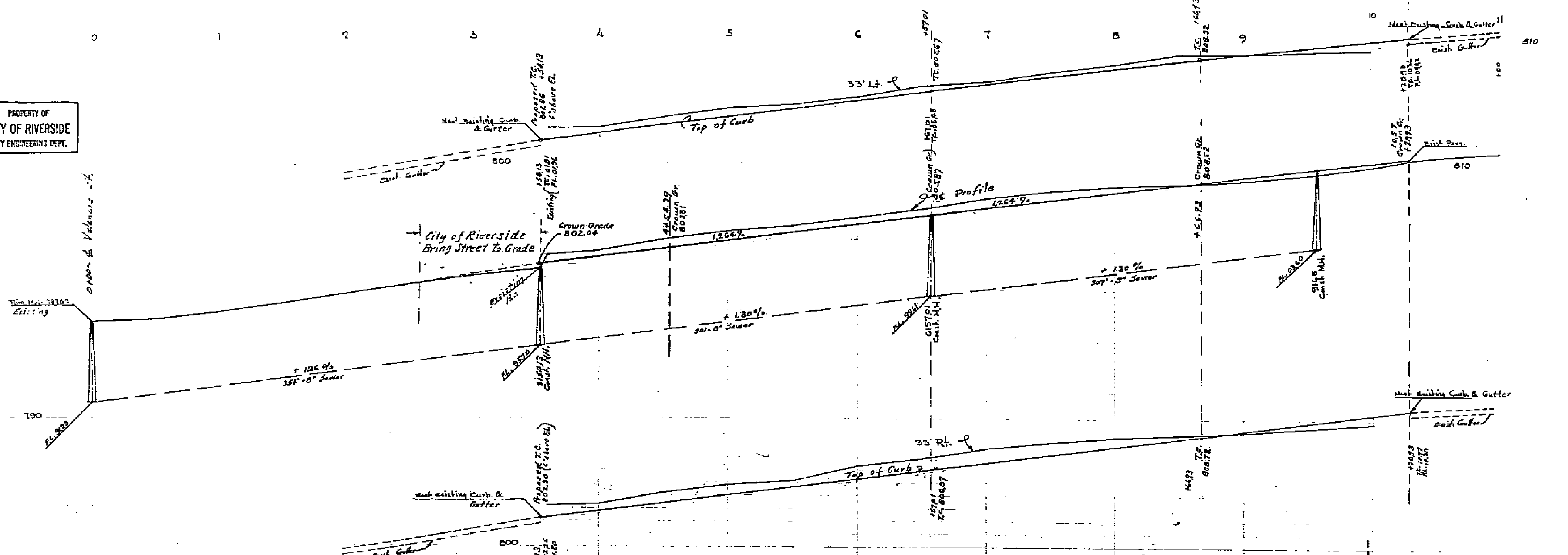


PROPERTY OF  
CITY OF RIVERSIDE  
CITY ENGINEERING DEPT.

PROPERTY OF  
CITY OF RIVERSIDE  
CITY ENGINEERING DEPT.



STREET, CURB & SEWER  
PROFILES  
LUTHER TRACT

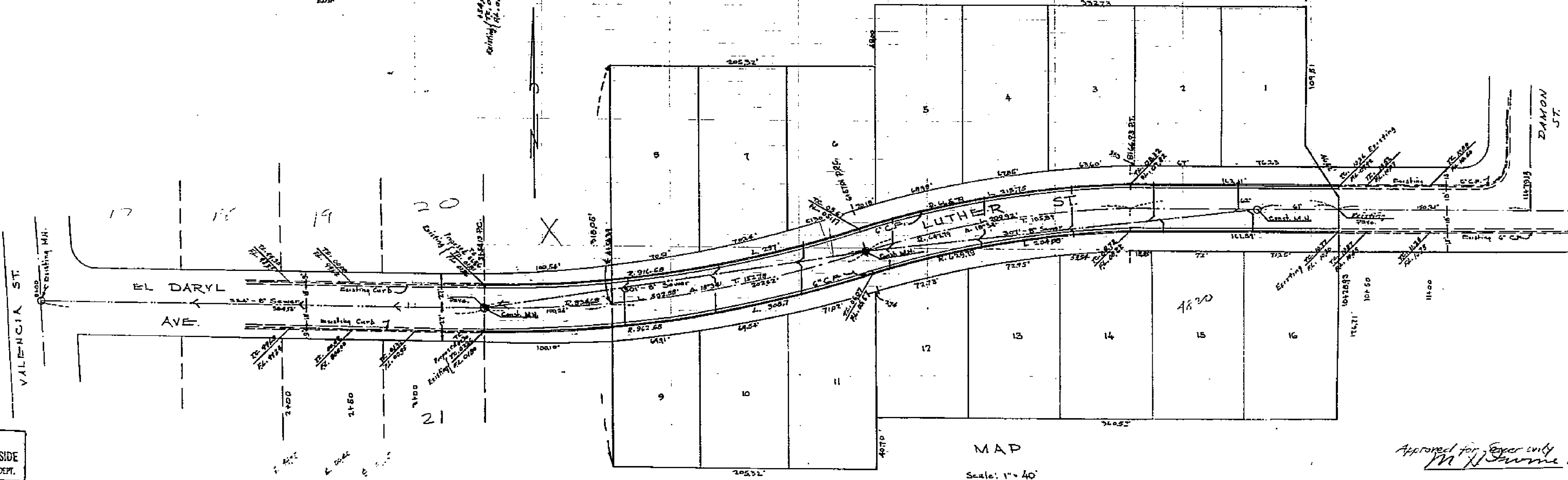
Scale: Horiz. 1" = 40'  
Vert. 1" = 4'

Donald J. McKee  
City Engineer

Reimbursement Contract # 1 Expired June 30-1952

B.M.  
Spk. & Lead in SW. Curb reference  
Intersection of Valencia & Sierra.  
Elev. 795.55  
(City F.B. 521/43)

Note:  
Curb grades to be set radially from center



APPROVED July 29, 1953  
Curb & Gutter  
M.H. Irvine  
City Engineer, City of Riverside, Calif.

Approved for Cover only 7-27-1953  
M.H. Irvine

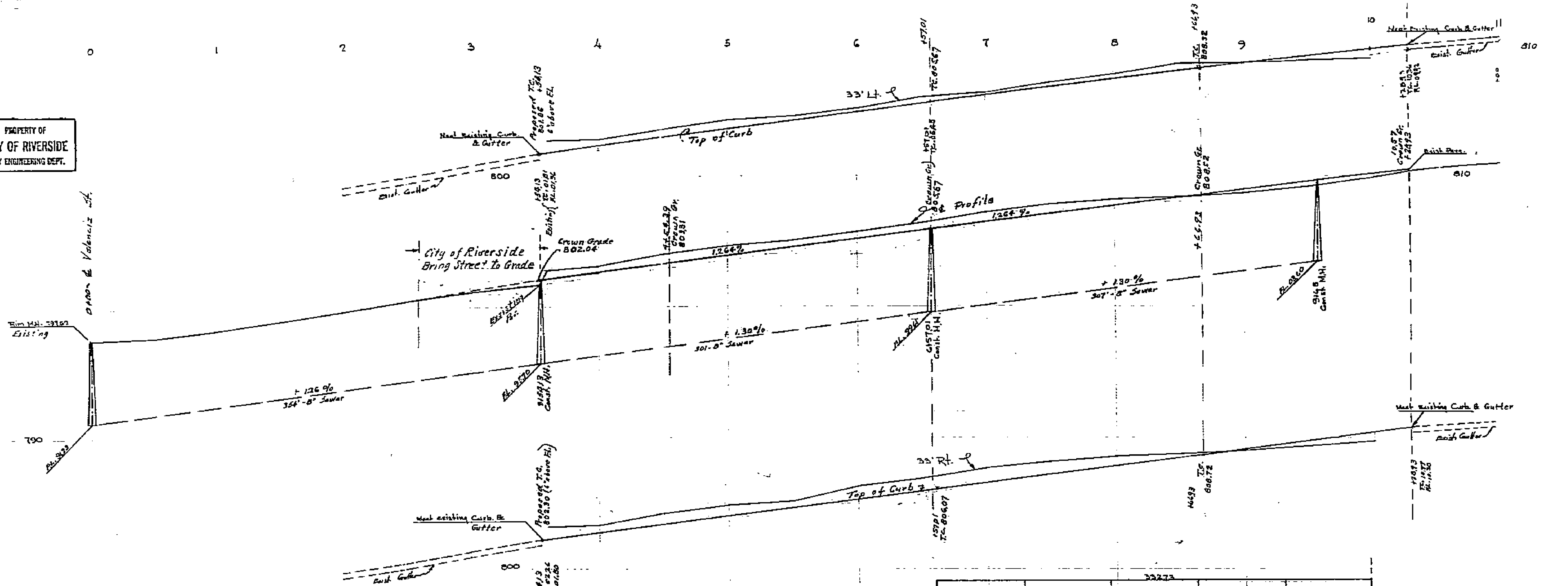
PROPERTY OF  
CITY OF RIVERSIDE  
CITY ENGINEERING DEPT.

1404

PROPERTY OF  
CITY OF RIVERSIDE  
CITY ENGINEERING DEPT.

PROPERTY OF  
CITY OF RIVERSIDE  
CITY ENGINEERING DEPT.

PROPERTY OF  
CITY OF RIVERSIDE  
CITY ENGINEERING DEPT.



STREET, CURB & SEWER  
PROFILES  
LUTHER TRACT

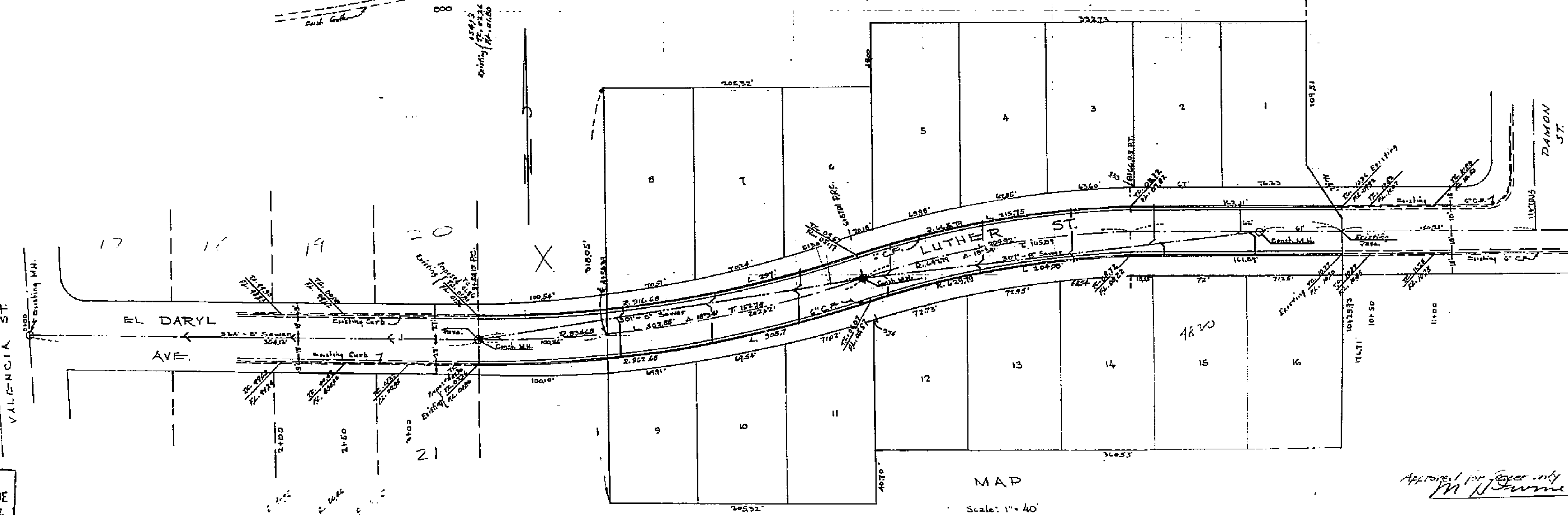
Scale: Horiz. 1" = 40'  
Vert. 1" = 4'

Donald J. Mc Kee  
City Engineer

Reimbursement Contract # 1 Expired June 30-1958

B.M.  
Spk. & Lead in SW. Curb reference  
Intersection of Valencia & Sierra.  
Elev. 795.55  
(City P.B. 521/42)

Note:  
Curb grades to be set radially from center.



MAP  
Scale: 1" = 40'

APPROVED July 29, 1953  
Curb & Gutter  
M. H. Irvine  
M.H. Irvine, City Engineer, City of Riverside, Calif.

Approved for sewer only 7-27-1953  
M. H. Irvine

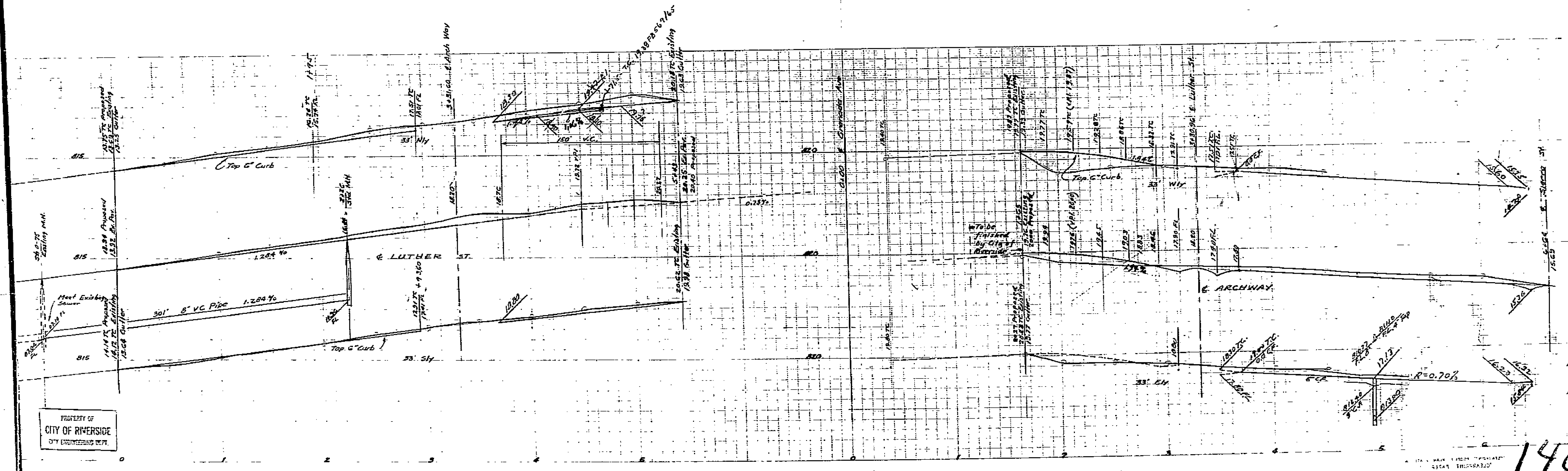
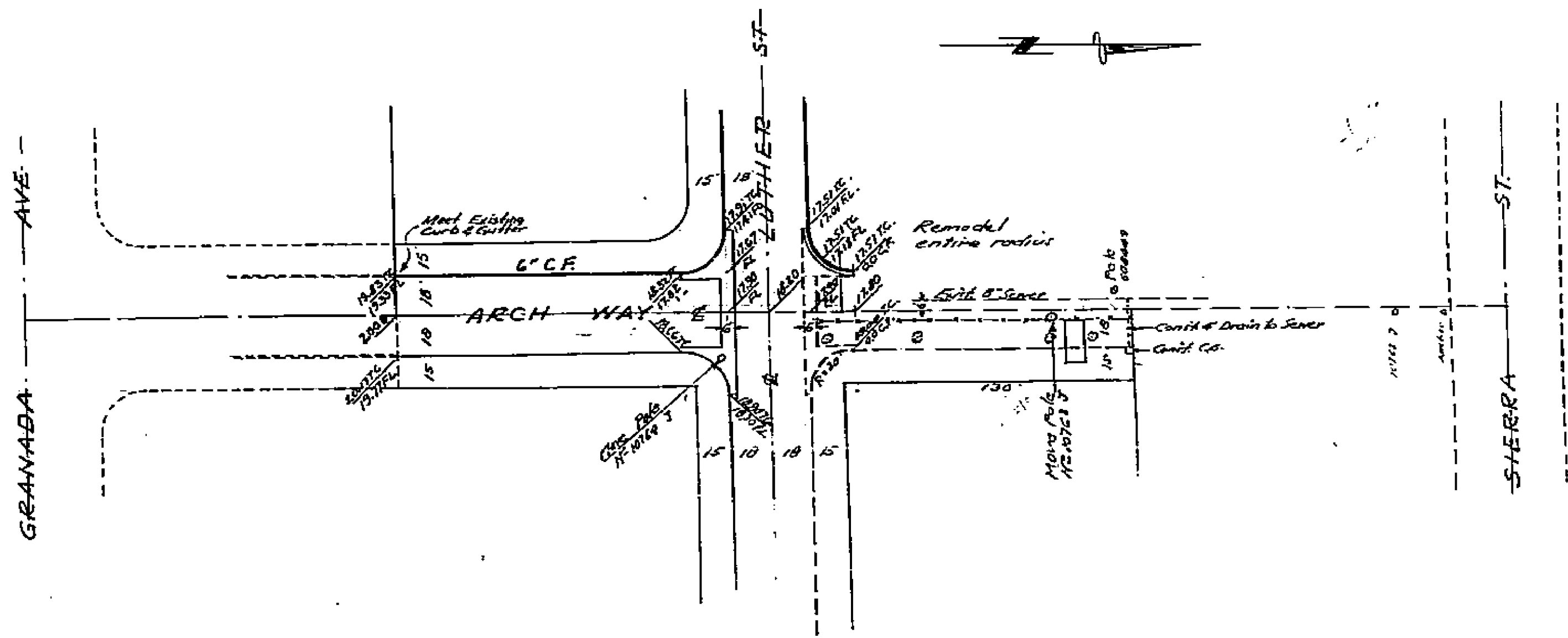
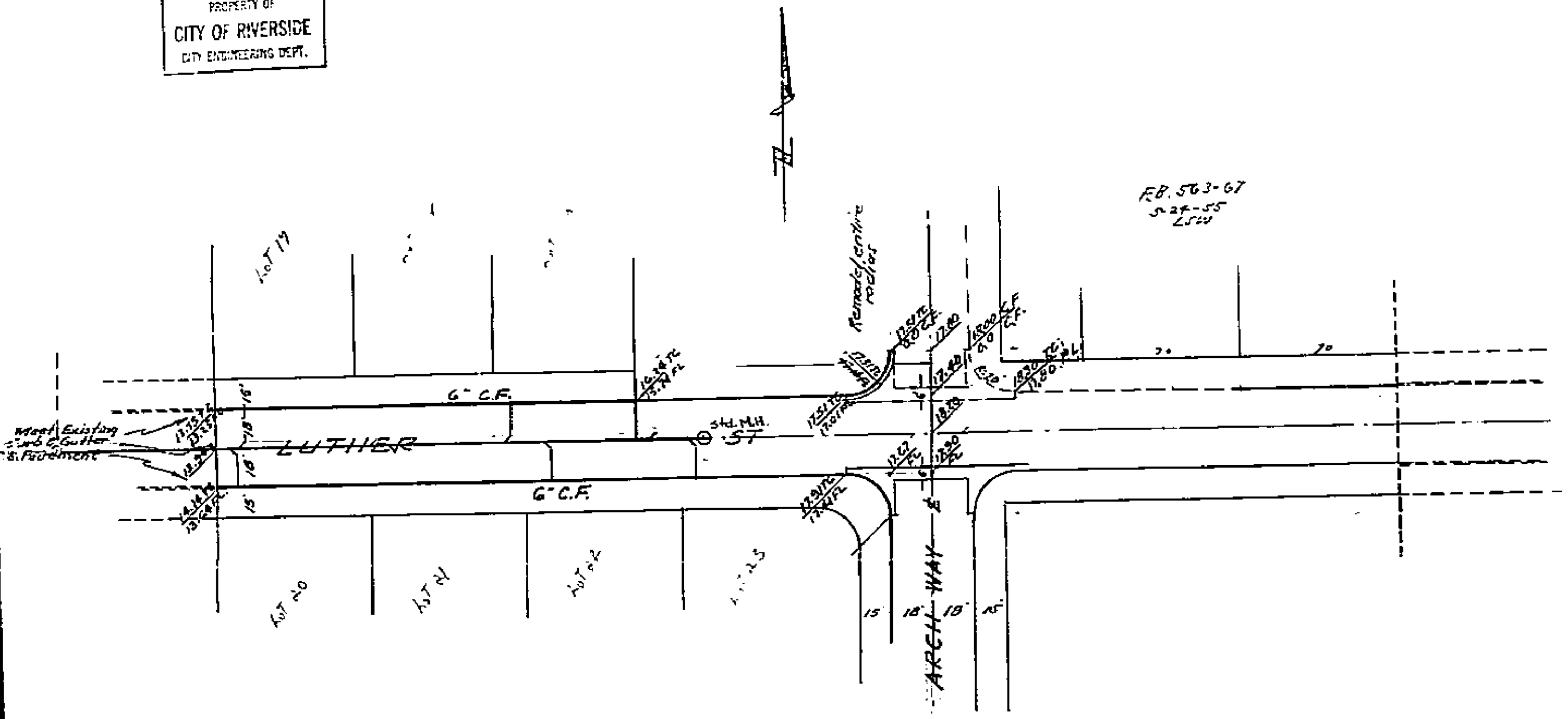
PROPERTY OF  
CITY OF RIVERSIDE  
CITY ENGINEERING DEPT.

PROPERTY OF  
CITY OF RIVERSIDE  
CITY ENGINEERING DEPT.

1404

PROPERTY OF  
CITY OF RIVERSIDE  
CITY ENGINEERING DEPT.

PROPERTY OF  
CITY OF RIVERSIDE  
CITY ENGINEERING DEPT.



Approved: *M. H. Davis*  
City Engineer

PROPERTY OF  
CITY OF RIVERSIDE  
CITY ENGINEERING DEPT.

PLAN AND PROFILE  
LUTHER ST & ARCH WAY  
LUTHER TR.#2

November 1953  
J.F. Davidson, C.  
Scale: Hor. 1"=40'  
Vert. 1"=4'  
R.D. 462-35

PROPERTY OF  
CITY OF RIVERSIDE  
CITY ENGINEERING DEPT.

1404