

Sheet #1 of 4

PROPERTY OF
CITY OF RIVERSIDE
CITY ENGINEERING DEPT.

UNIVERSITY ESTATES

PLANS & PROFILES

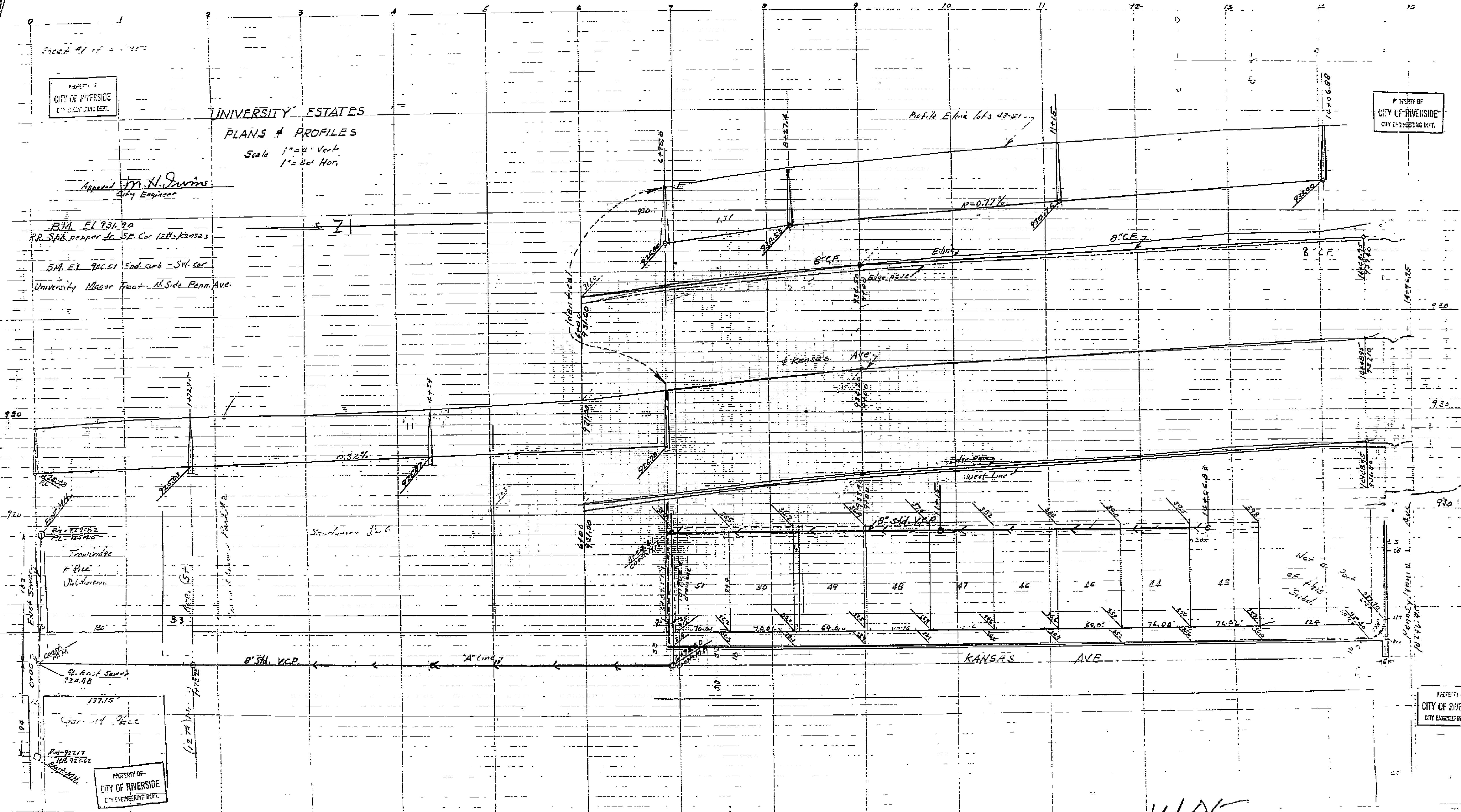
Scale 1" = 20' Vert
1" = 40' Hor.

Approved M. H. Swine
City Engineer

B.M. EL 931.90
RR S&W corner to SW Cor 12th & Kansas

S.M. E.L. 926.51 End curb - SW cor
University Major Fract. N. Side Penn. Ave.

PROPERTY OF
CITY OF RIVERSIDE
CITY ENGINEERING DEPT.



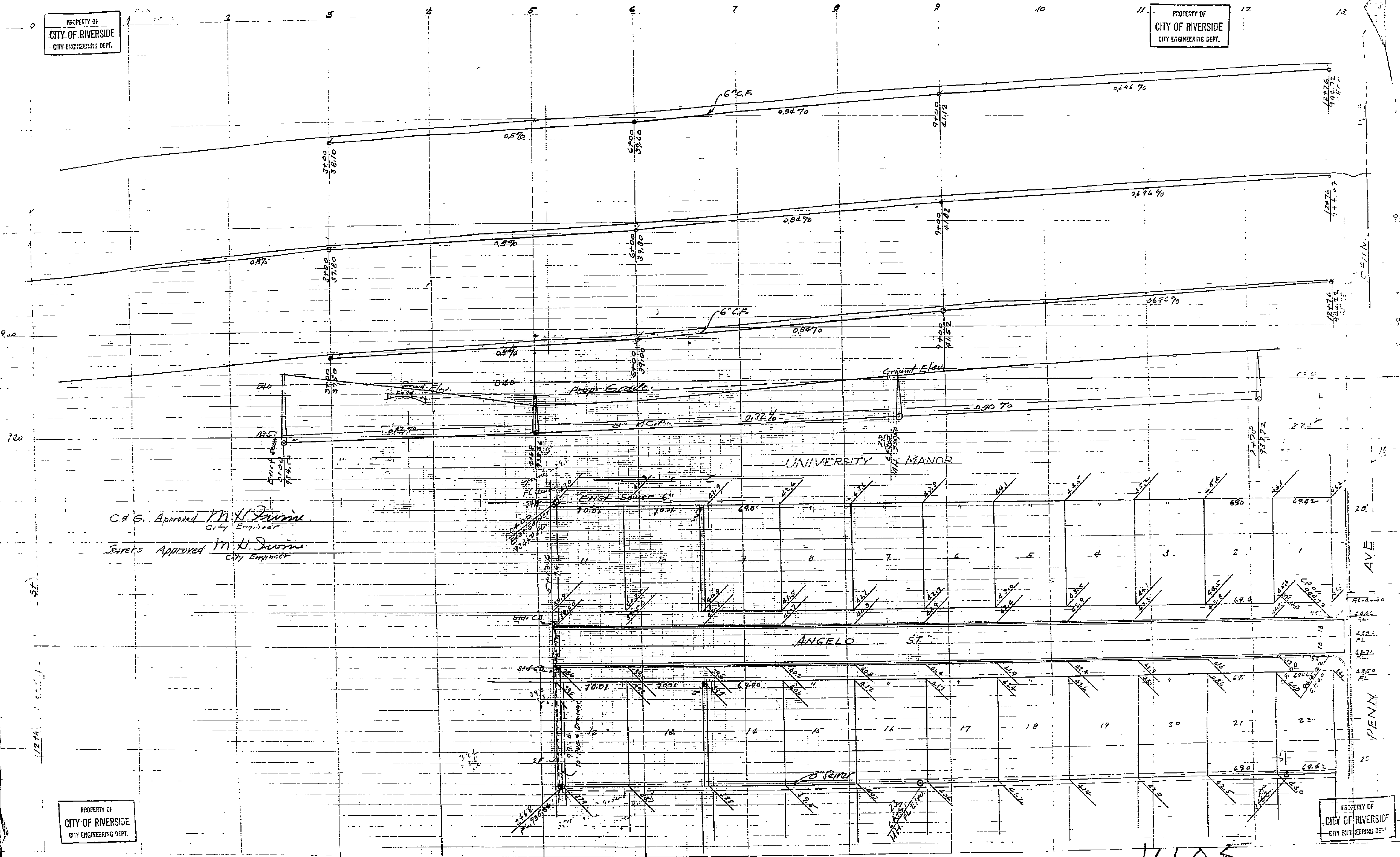
PROPERTY OF
CITY OF RIVERSIDE
CITY ENGINEERING DEPT.

PROPERTY OF
CITY OF RIVERSIDE
CITY ENGINEERING DEPT.

1405

PROPERTY OF
CITY OF RIVERSIDE
CITY ENGINEERING DEPT.

PROPERTY OF
CITY OF RIVERSIDE
CITY ENGINEERING DEPT.



C.E. Approved *M.H. Swine*
City Engineer

Sewers Approved *M.H. Swine*
City Engineer

PROPERTY OF
CITY OF RIVERSIDE
CITY ENGINEERING DEPT.

PROPERTY OF
CITY OF RIVERSIDE
CITY ENGINEERING DEPT.

1405

Sheet # 3 of 4 sheets

PROPERTY OF
CITY OF RIVERSIDE
CITY ENGINEERING DEPT.

930

930

930

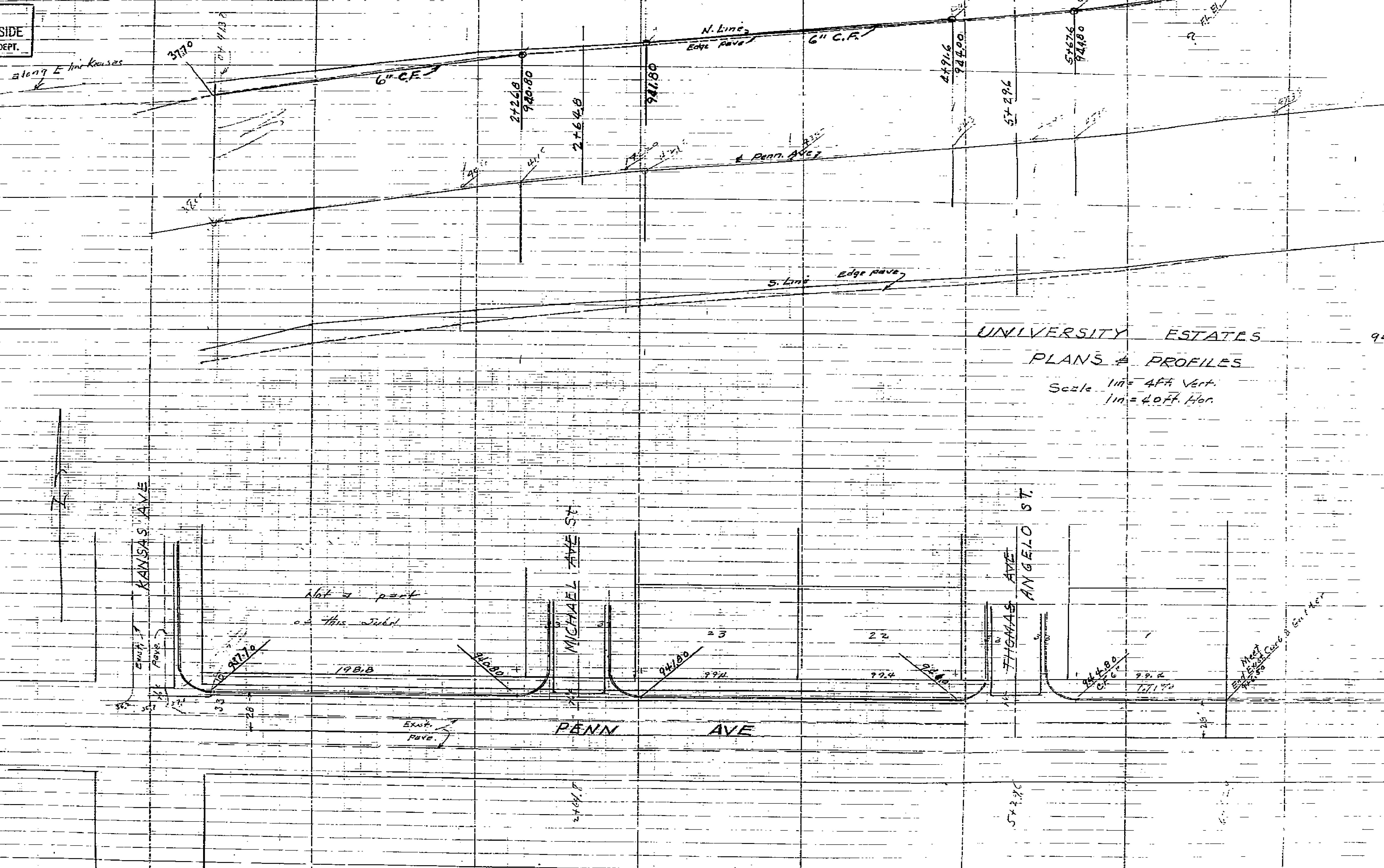
940

940

UNIVERSITY ESTATES

PLANS & PROFILES

Scale 1" = 4' H. Vert.
1" = 40' H. Hor.



Approved: *M. H. [Signature]*
CITY ENGINEER

PROPERTY OF
CITY OF RIVERSIDE
CITY ENGINEERING DEPT.

PROPERTY OF
CITY OF RIVERSIDE
CITY ENGINEERING DEPT.

1405