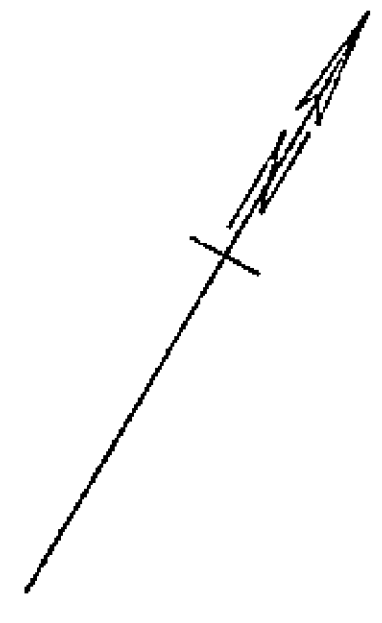
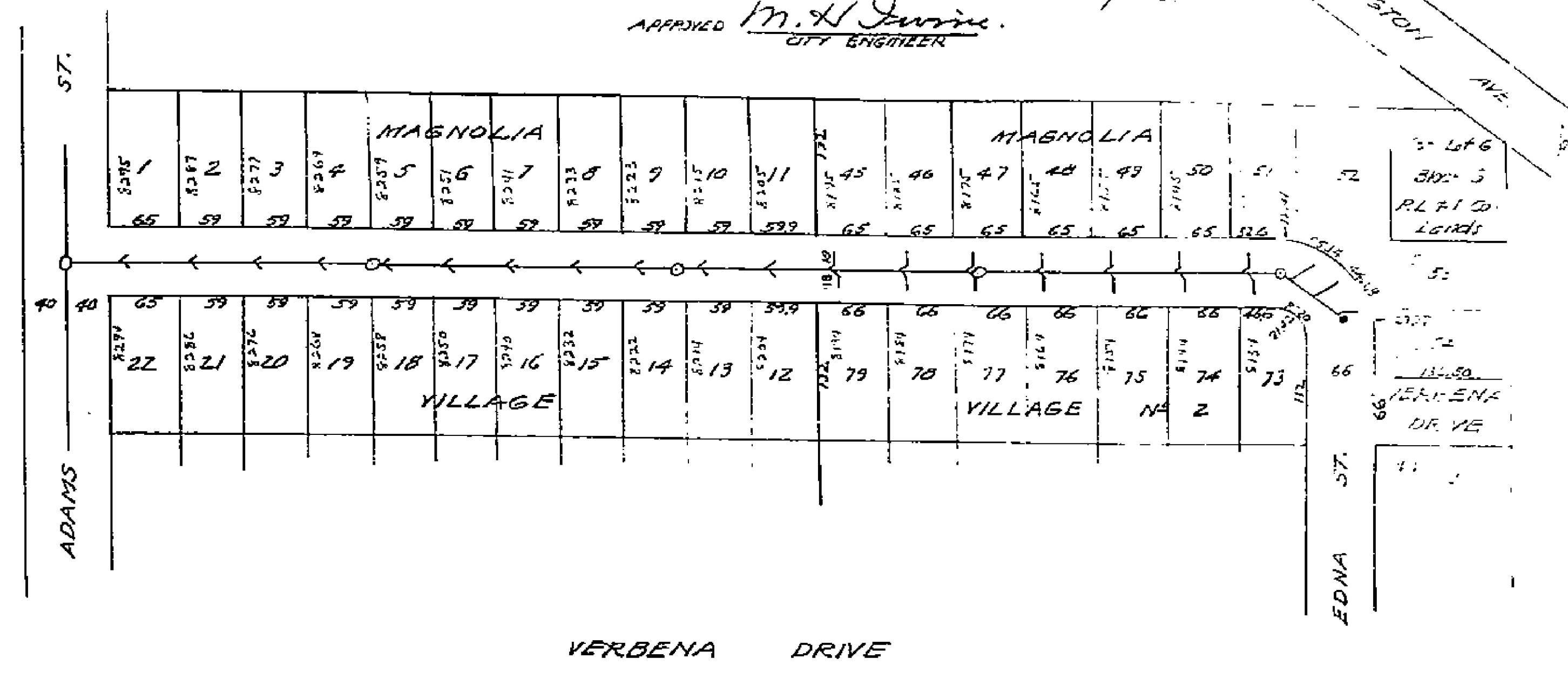
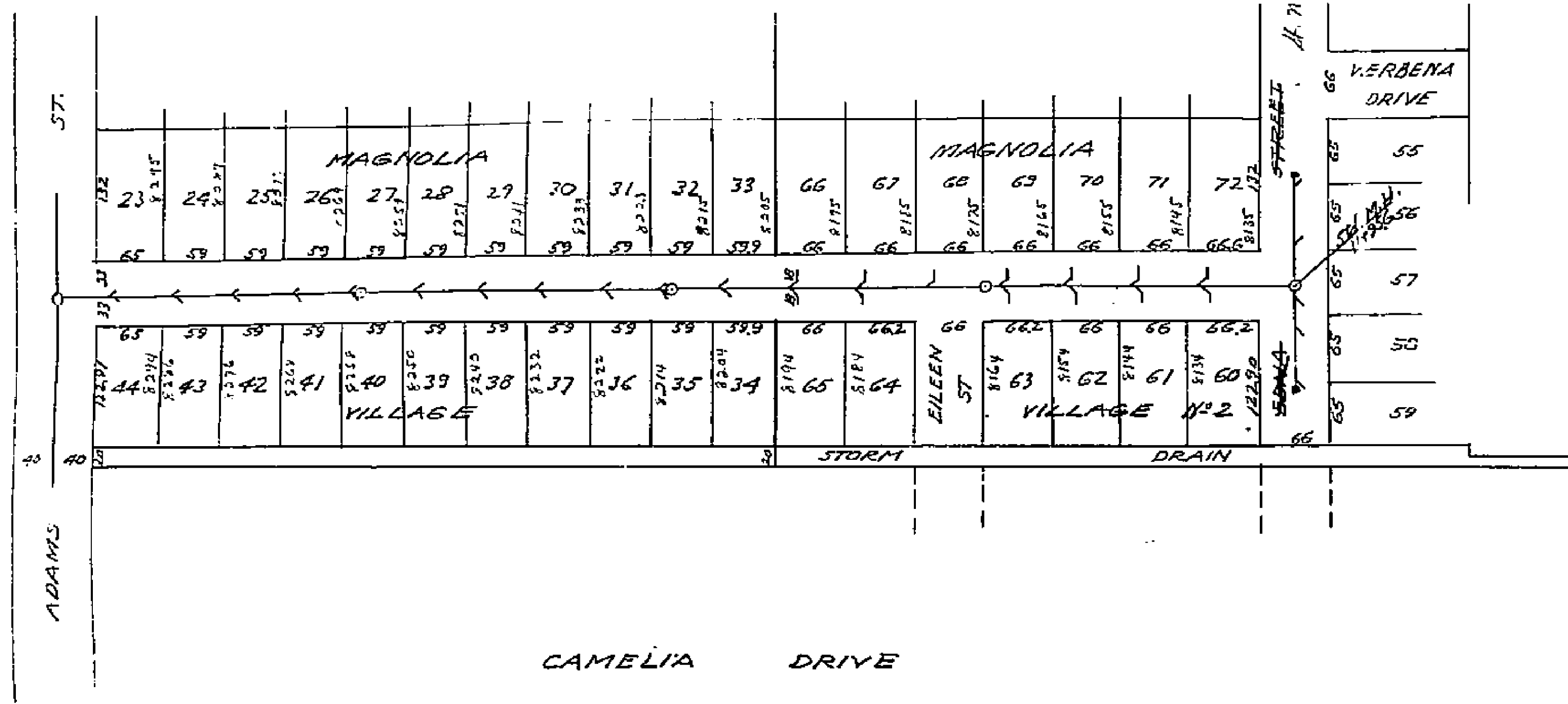


PLAN AND PROFILE
 NO. ~~1408~~ 1408-A
 SHOWING PROPOSED SEWERS IN
 CAMELIA & VERBENA DRIVES

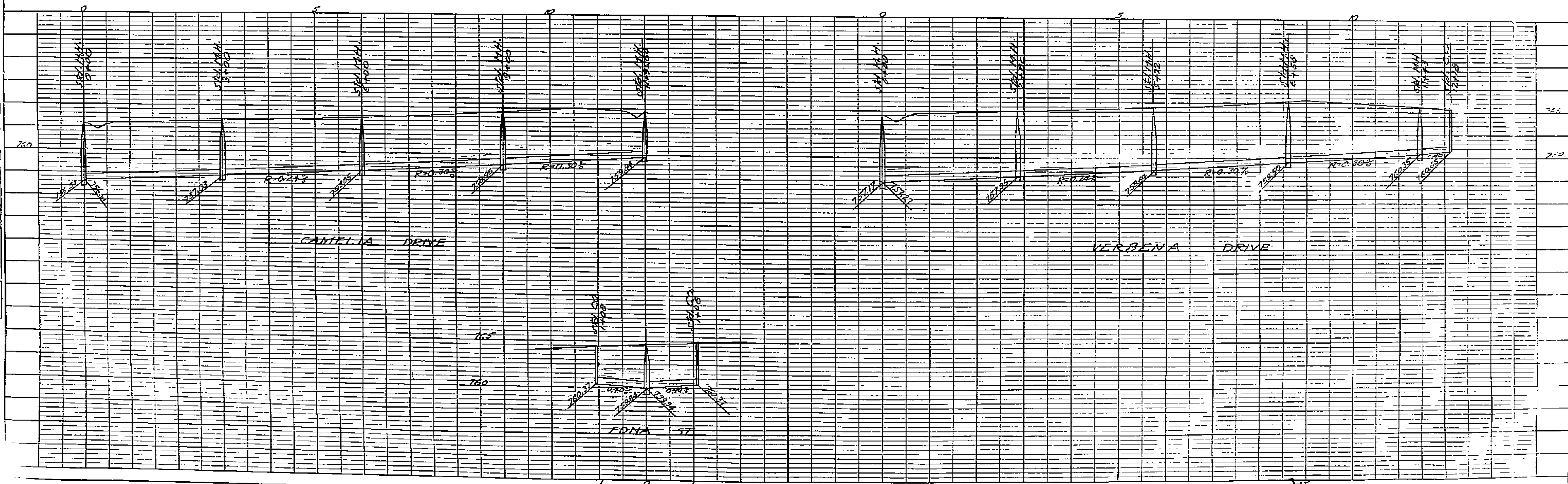
SCALE: HOR. 1/4" = 10.0 FT.
 VERT. 1/4" = 5 FT.
 APPROVED *M. J. Irvine*
 CITY ENGINEER

CONTINUED FROM
 EX. 13



PLAN
 SUBMITTED BY: [Name]
 DATE: [Date]

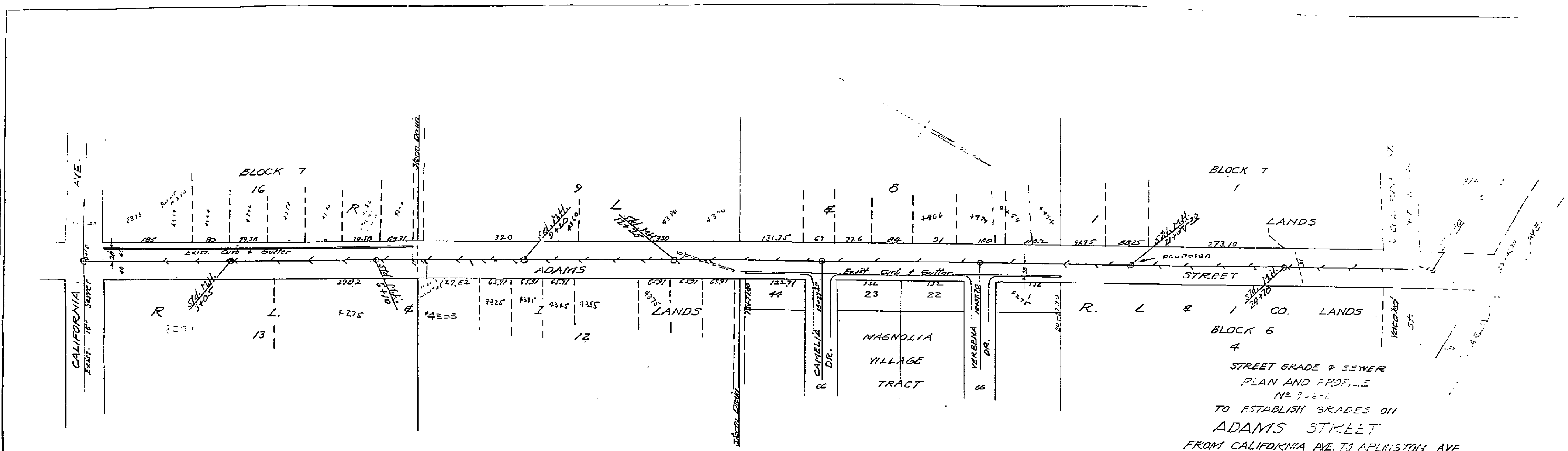
PROFILE
 SUBMITTED BY: [Name]
 DATE: [Date]



1408A

NOTE BOOK
ALIGNMENT CHECKED
NO. ---
DATE ---

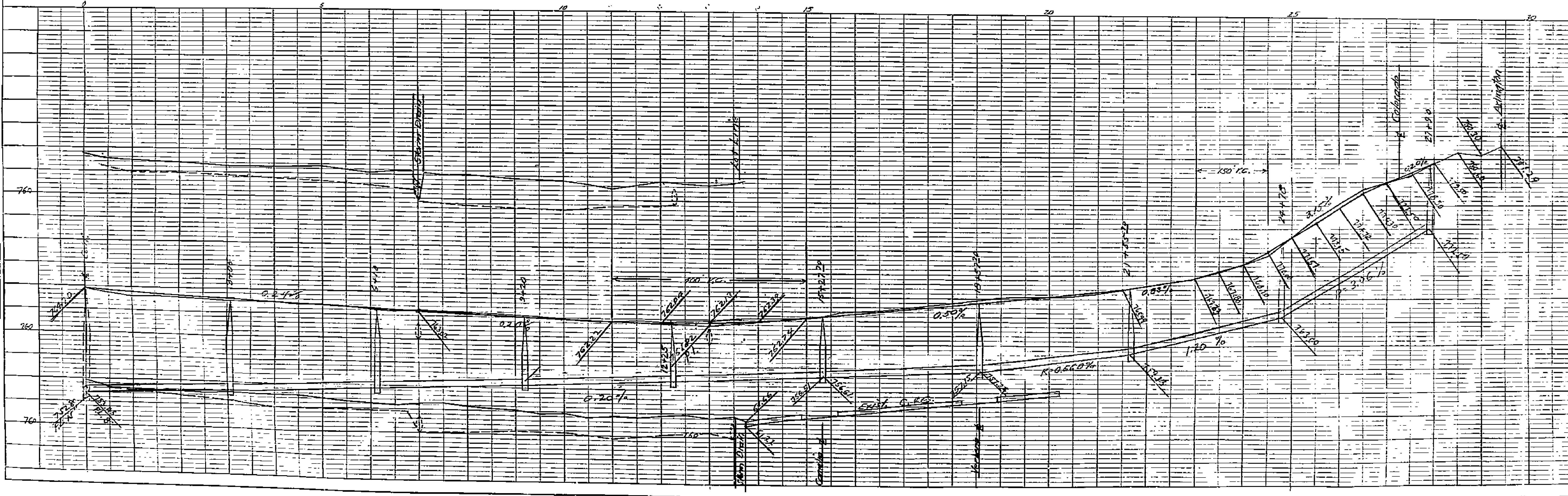
NOTE BOOK
GRADES CHECKED
BY W. F. NOTED
STRUCTURE NOTED
NO. ---
DATE ---



STREET GRADE & SEWER
PLAN AND PROFILE
No. 7-6-E
TO ESTABLISH GRADES ON
ADAMS STREET
FROM CALIFORNIA AVE. TO APLINGTON AVE.
CITY OF RIVERSIDE

APPROVED *M. H. Duran*
M. H. DURAN, P.E. & S.E.
CITY ENGINEER

FB-397-14
OCT. 1950
SCALE: 1" = 100' HORIZ.
1" = 5' VERT.



K408A