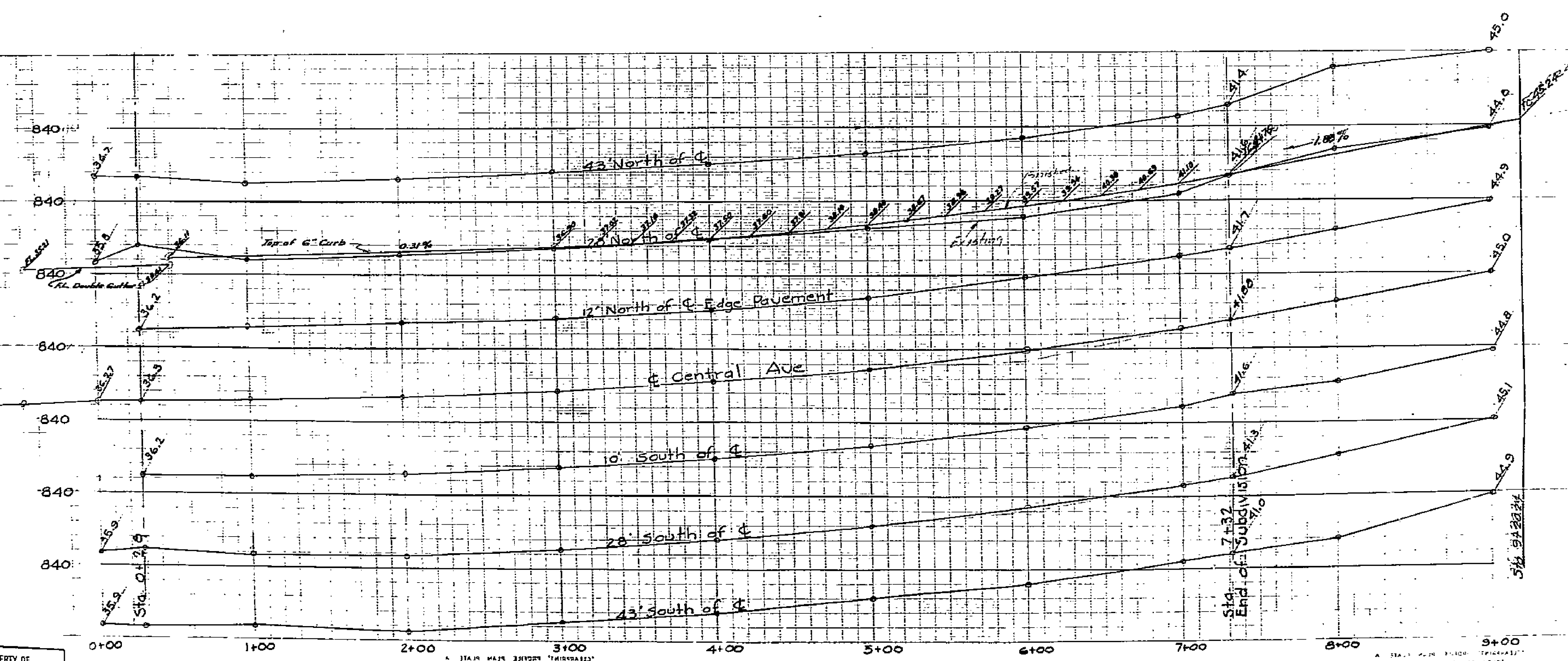
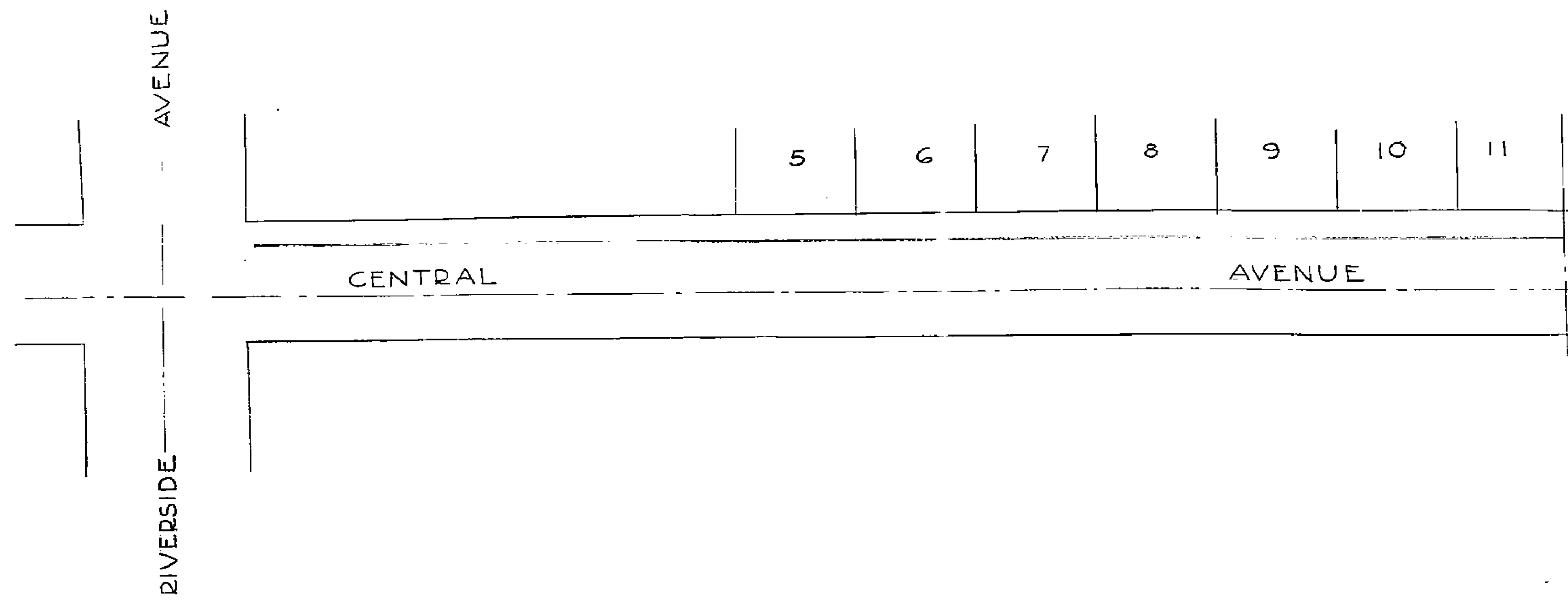


PROPERTY OF  
CITY OF RIVERSIDE  
CITY ENGINEERING DEPT.

PROPERTY OF  
CITY OF RIVERSIDE  
CITY ENGINEERING DEPT.



Approved *M. H. Swine*  
City Engineer

Plan & Profile  
of  
CENTRAL AVENUE  
for  
HIBISCUS TRACT  
Scale: Hor. 1"=40'  
Vert. 1"=4' July 1950

J.F. Davidson C.E.

FB 407-20

PROPERTY OF  
CITY OF RIVERSIDE  
CITY ENGINEERING DEPT.

PROPERTY OF  
CITY OF RIVERSIDE  
CITY ENGINEERING DEPT.

1411