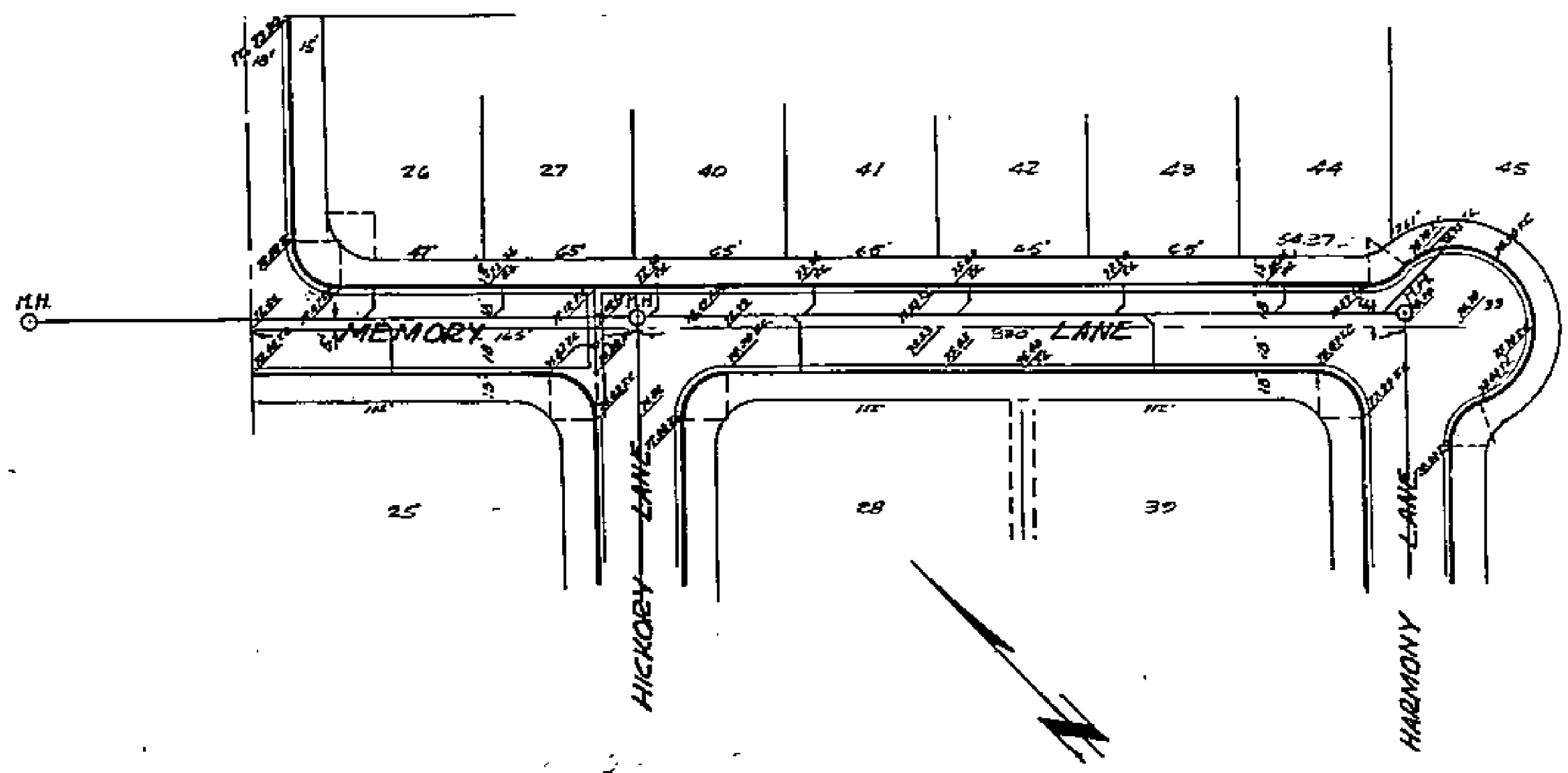
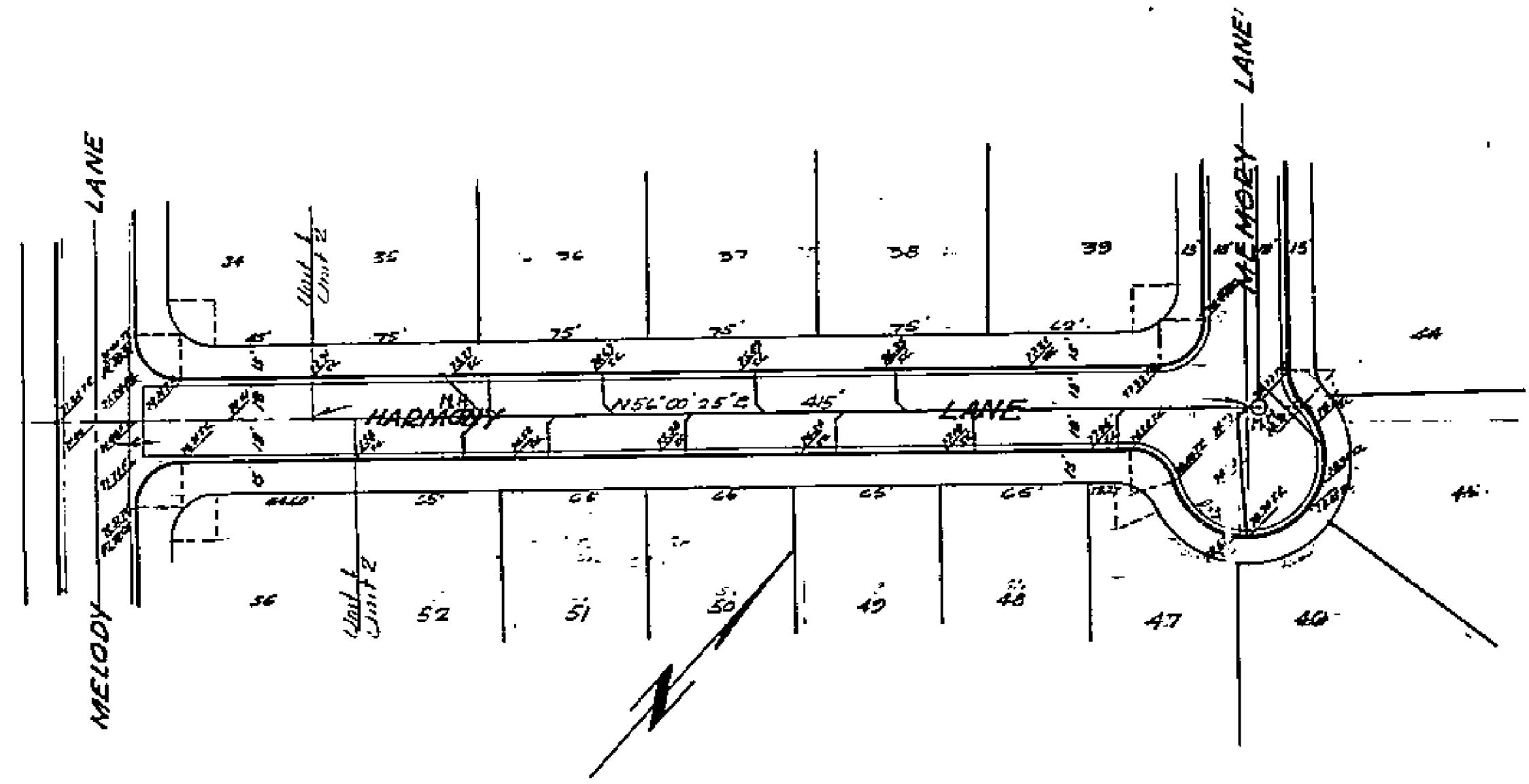
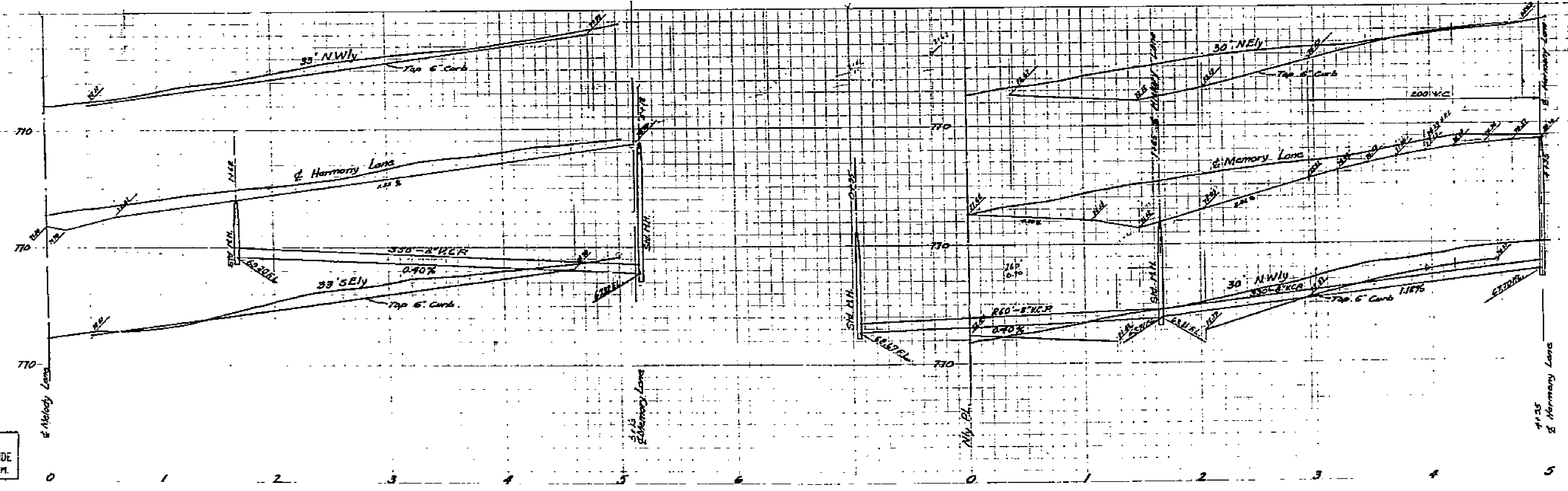


PROPERTY OF  
CITY OF RIVERSIDE  
CITY ENGINEERING DEPT.



PROPERTY OF  
CITY OF RIVERSIDE  
CITY ENGINEERING DEPT.



Approved as revised June 10, 1951.  
*M. H. Swains*  
City Engineer

Approved *M. H. Swains*  
City Engineer

PROPERTY OF  
CITY OF RIVERSIDE  
CITY ENGINEERING DEPT.

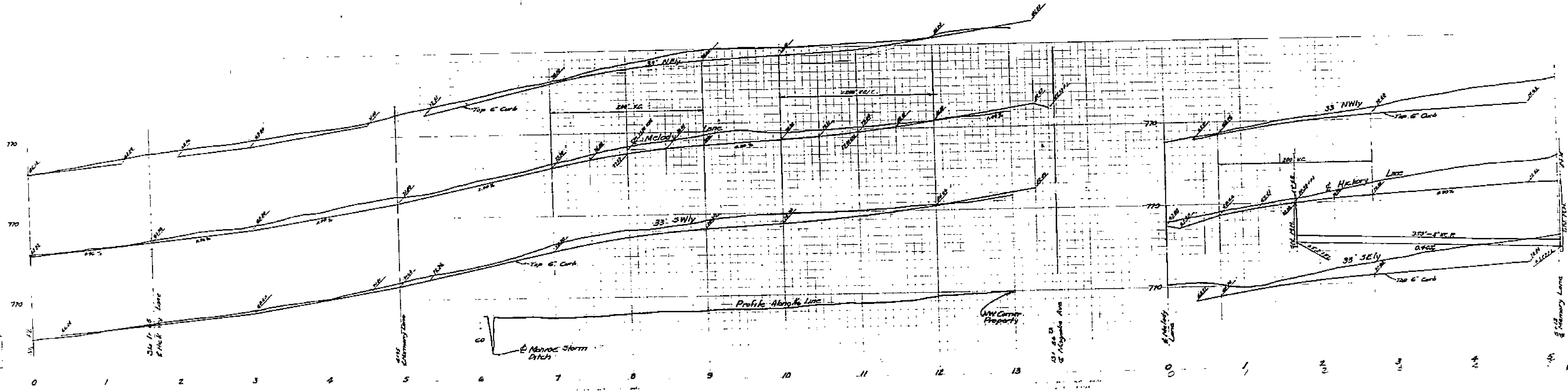
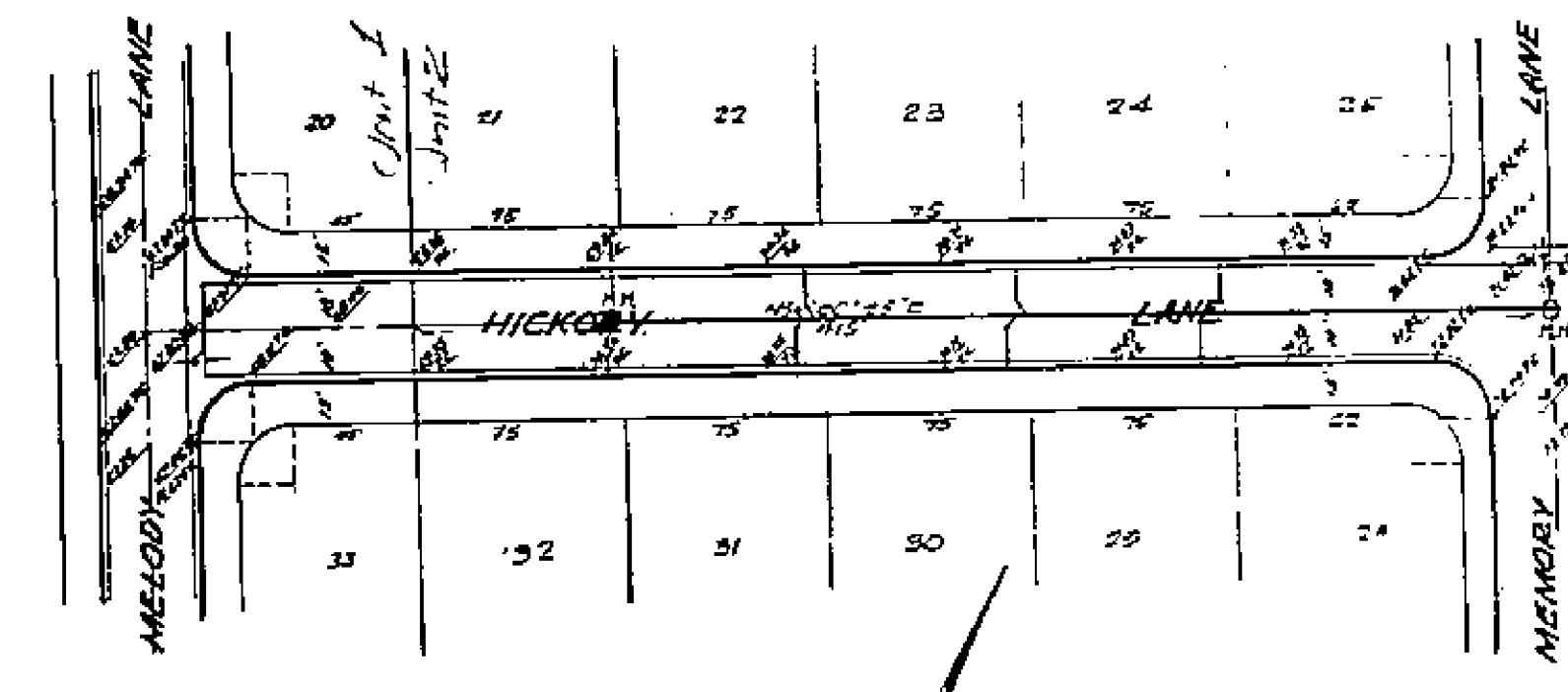
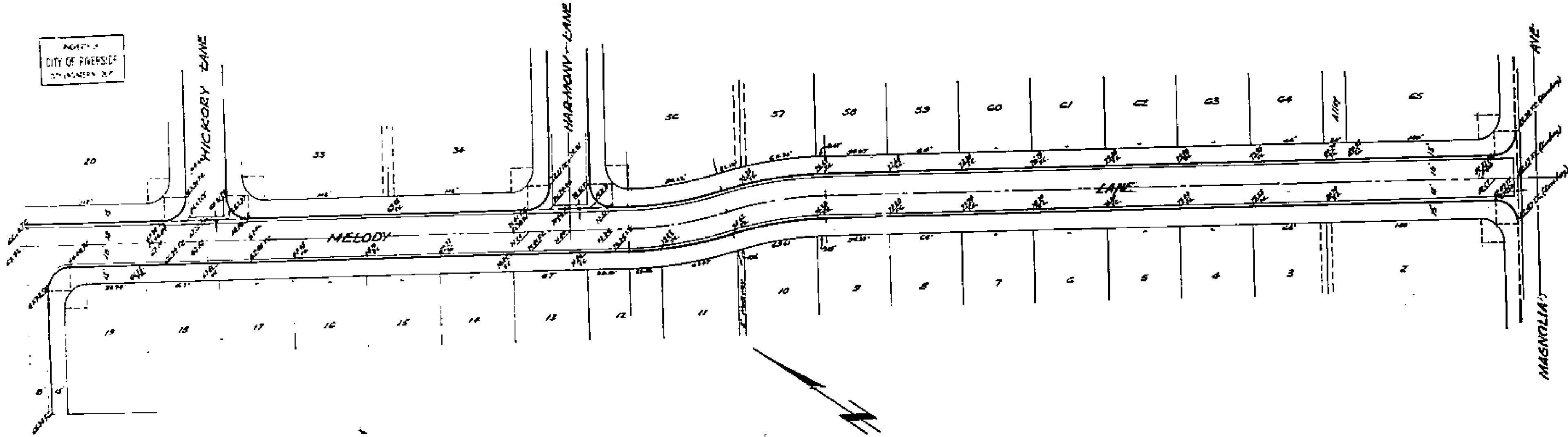
PROPERTY OF  
CITY OF RIVERSIDE  
CITY ENGINEERING DEPT.

PLAN AND PROFILE  
MELODY LANE GARDEMS 7 UN.  
June 1951  
Horiz. Scale 1" = 40'  
Vert. Scale 1" = 2'  
J. F. Davidson C.E.

1414

EG. 47

AGENCY  
CITY OF PENSACOLA  
ENGINEER'S OFFICE



PLANNED  
CITY OF PENSACOLA  
ENGINEER'S OFFICE

Approved as per June 10 1951  
J. P. Davidson  
City Engineer

Approved J. P. Davidson  
City Engineer

PLANNED  
CITY OF PENSACOLA  
ENGINEER'S OFFICE

PLAN AND PROFILE  
MELODY LANE GARDENS  
June 1951  
Map Scale 1"=40'  
Plan Scale 1"=40'  
J. P. Davidson C.E.

1414