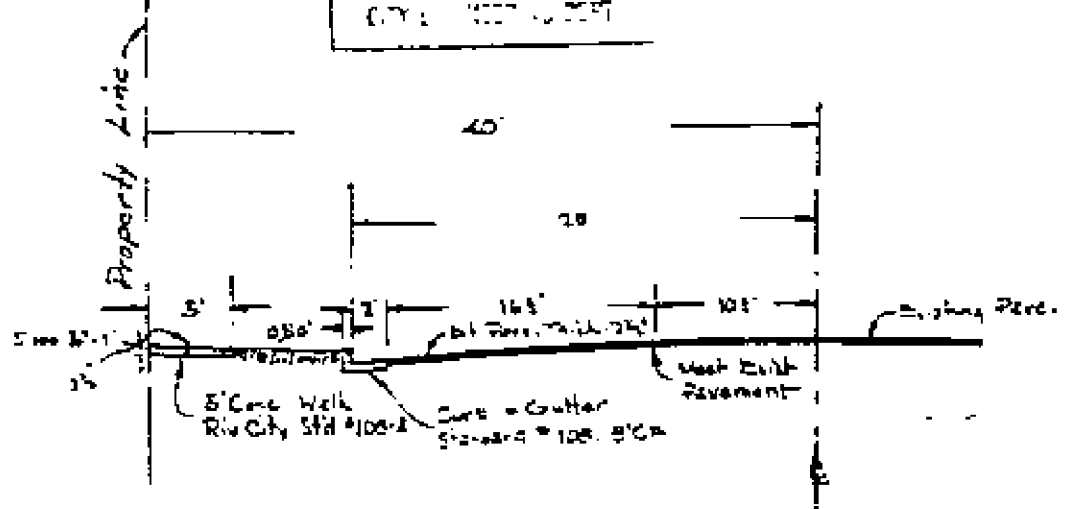
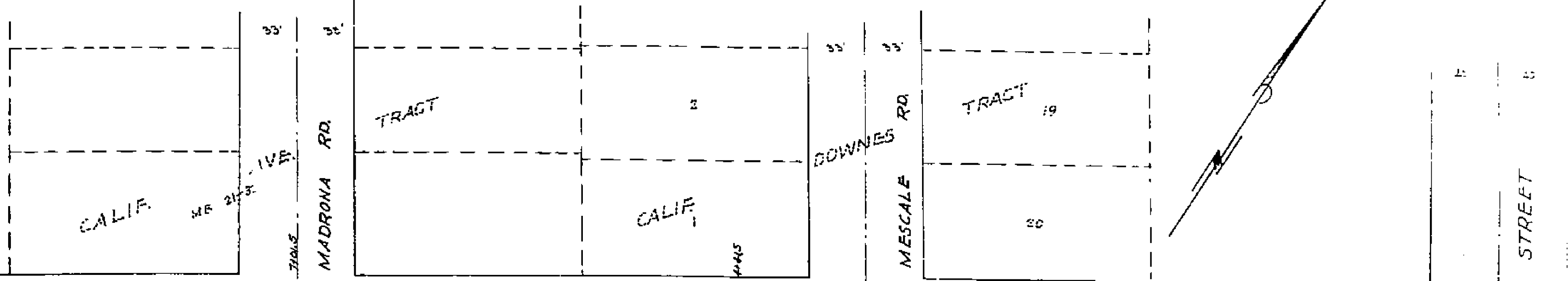


PROPERTY OF
CITY OF RIVERSIDE
CITY ENGINEER

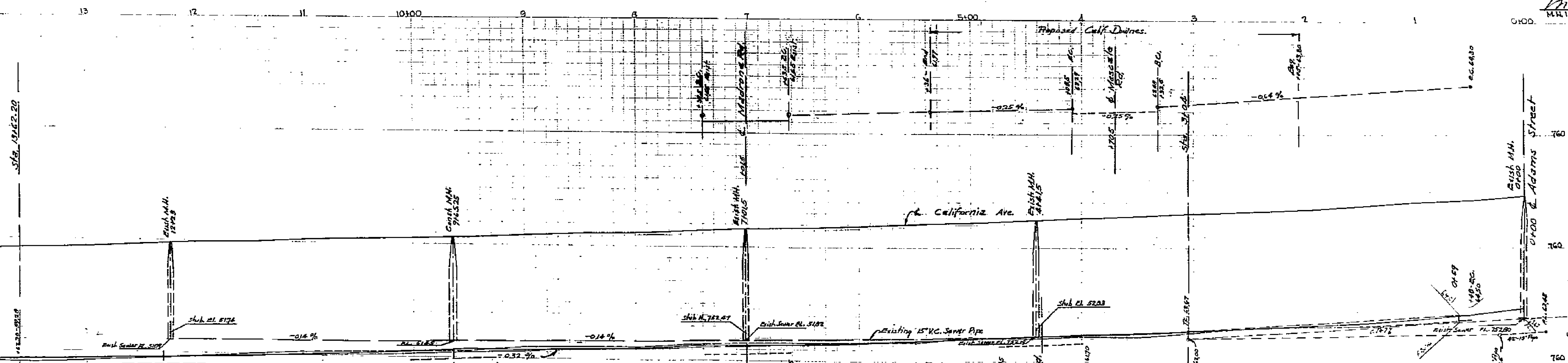


TYPICAL STREET SECTION
California Avenue
Sta. 3+04 - 13+62.2



MAP
Scale: 1" = 40'

Dec. 2, 1953.
Approved within the Limits
M.H. Irvine
M.H. Irvine, City Engineer

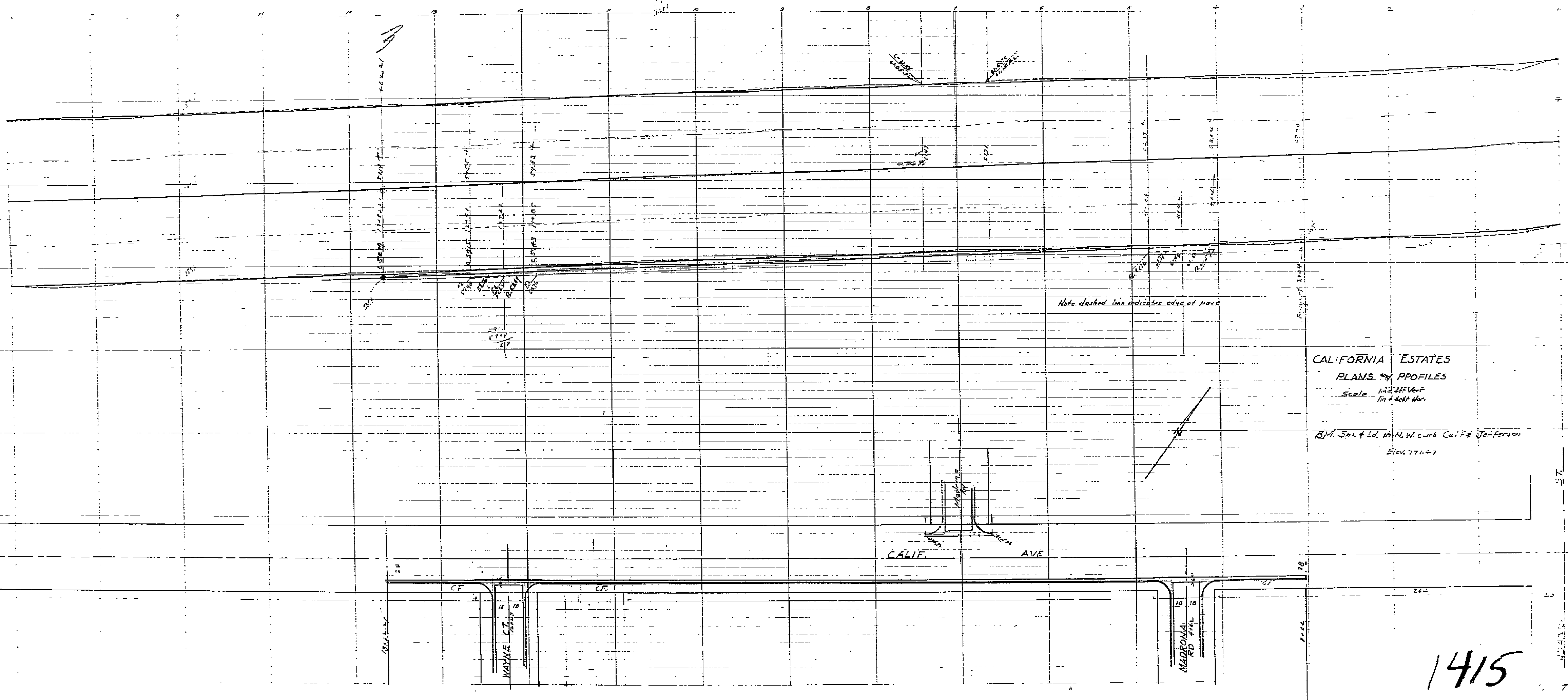


PROFILE -
Vertical: 1" = 4'
Scale: Horiz. 1" = 40'

PROPERTY OF
CITY OF RIVERSIDE
CITY ENGINEER

CALIFORNIA ESTATES
Curb and Sewer Grades
PROFILES & PLAN
November 1953, Scale as shown
Donald H. McKee
City Engineer

1415



CALIFORNIA ESTATES
 PLANS & PROFILES

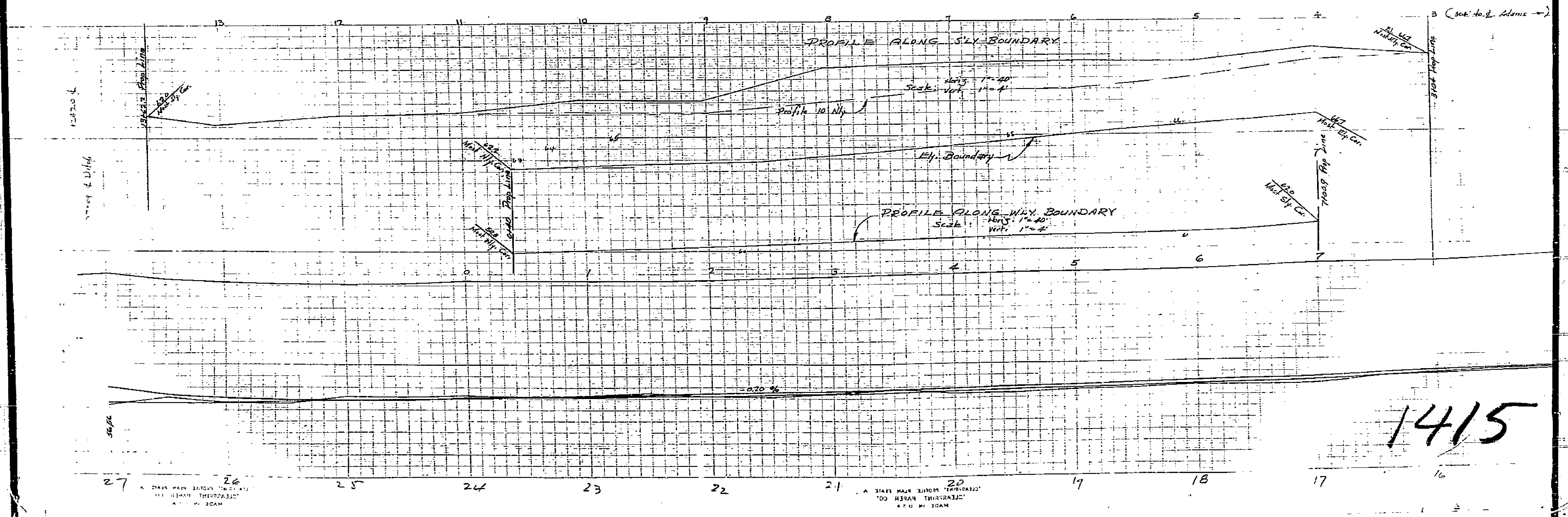
Scale 1" = 20' Vert.
 1" = 40' Hor.

B.M. Sak & Ld. 171 N.W. cor. Cal & Jefferson
 Elev. 771.47

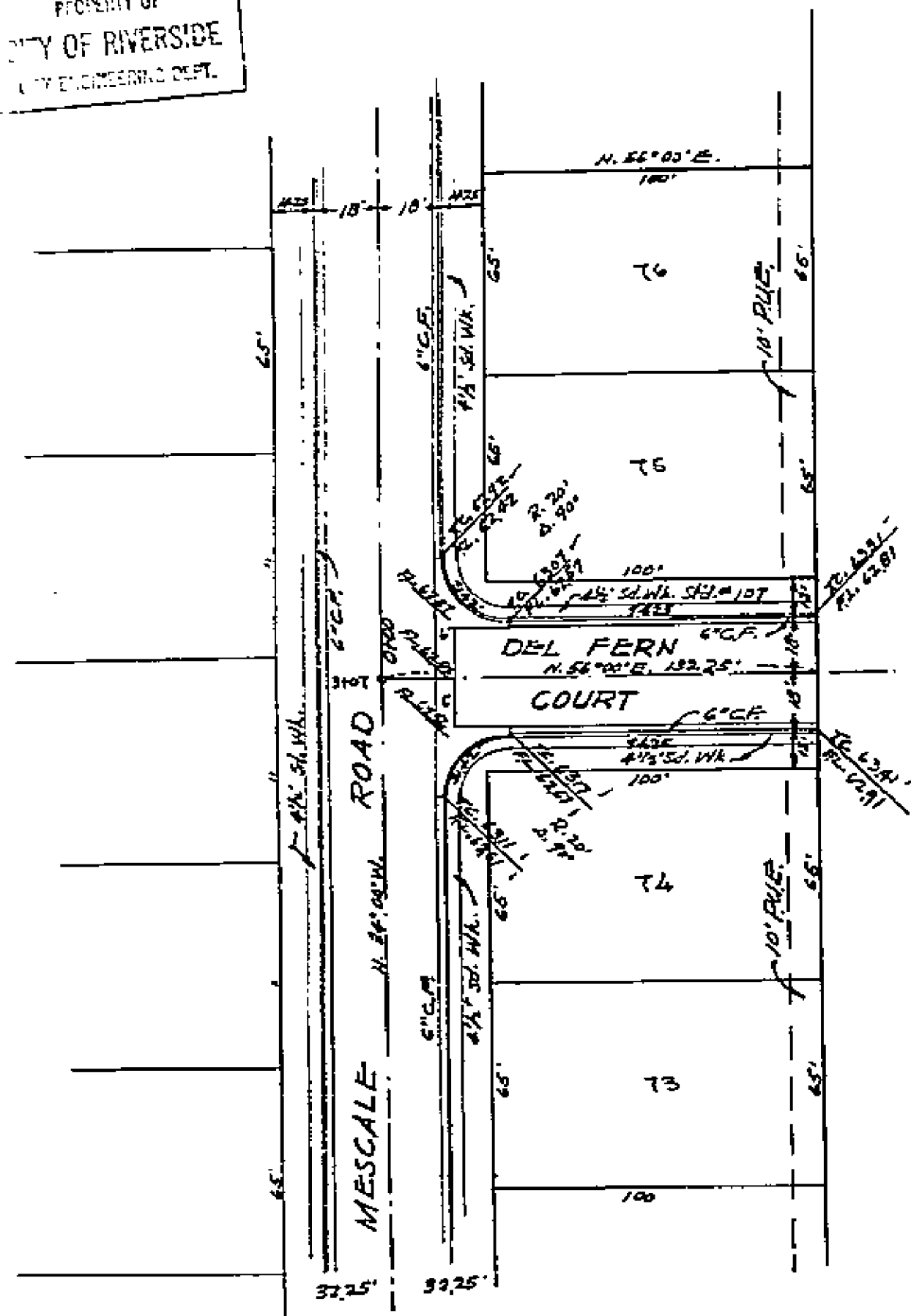
1415

1415

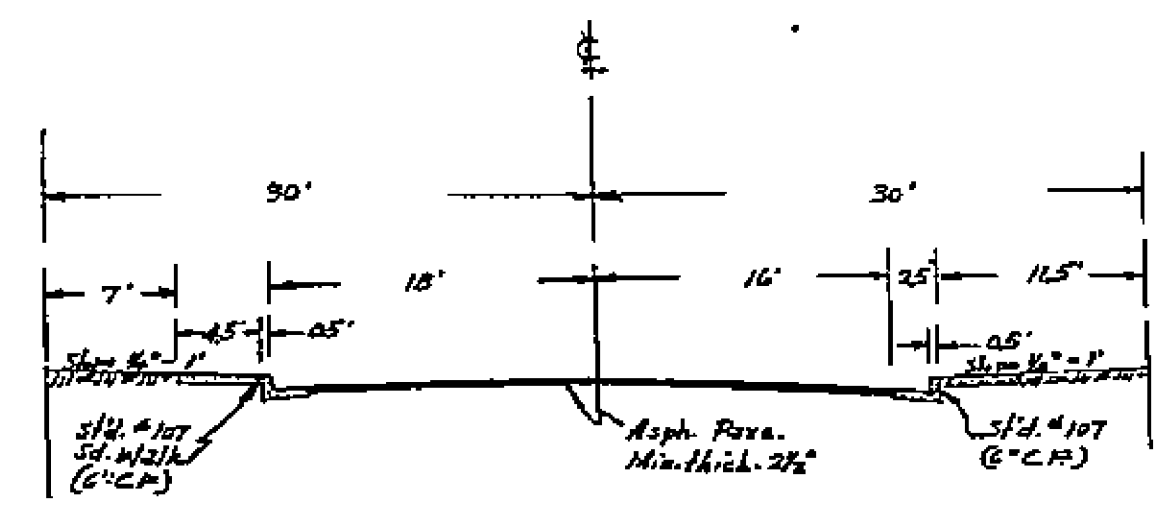
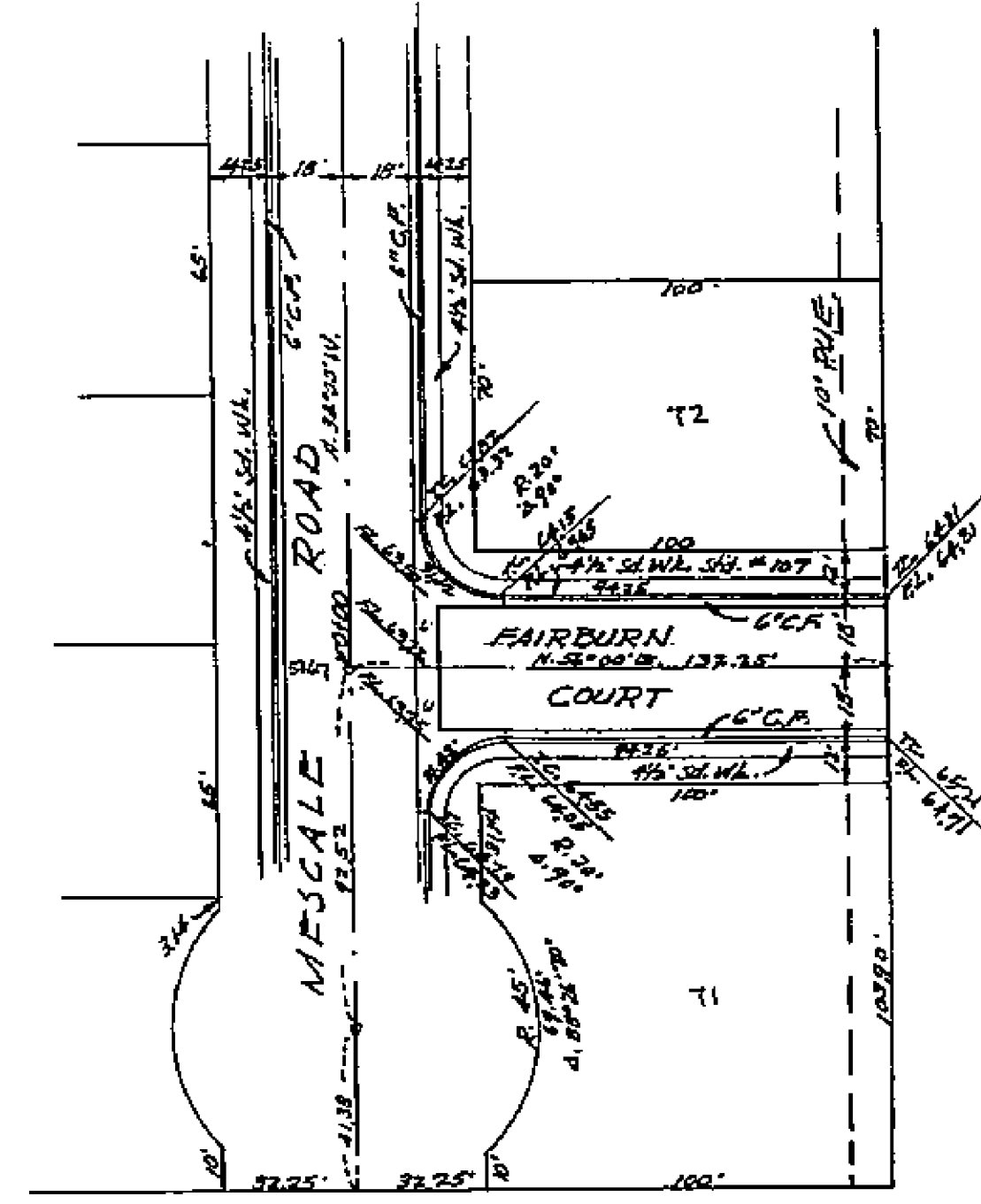
File with
Lumber Estate



PROPERTY OF
CITY OF RIVERSIDE
CITY ENGINEERING DEPT.

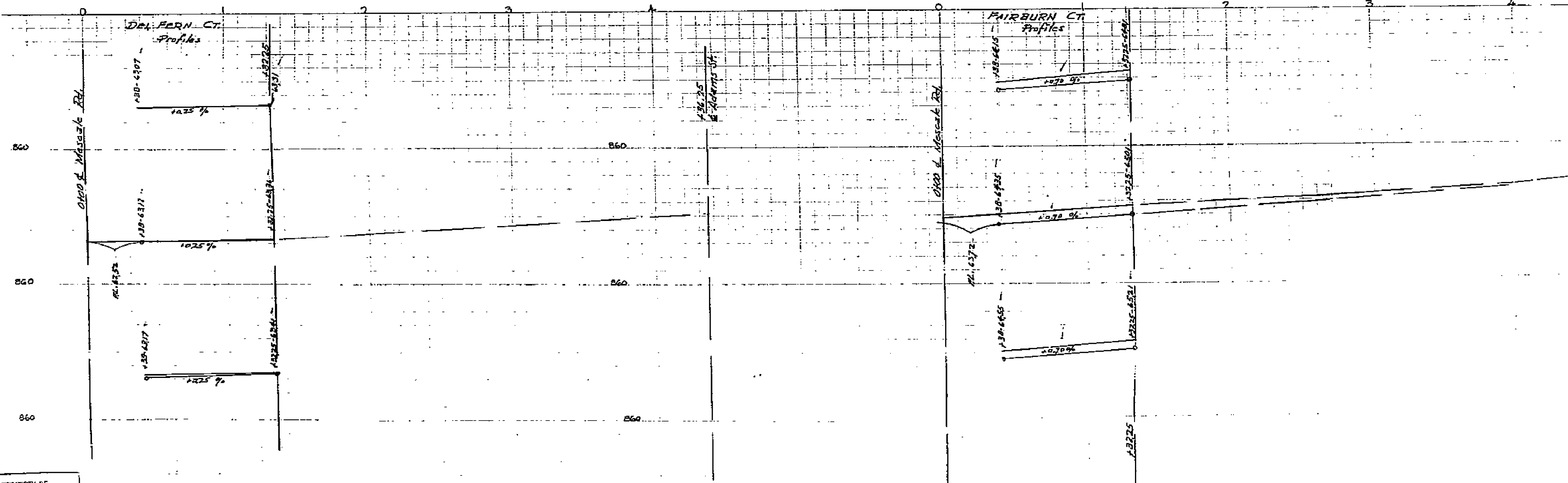


MAP
Scale: 1" = 40'



TYPICAL STREET SECTION
Del Fern Court & Fairburn Court

CALIFORNIA ESTATES
Curb Grades
PROFILES & PLAN
November, 1953
Donald J. McKee, Lic. Surveyor



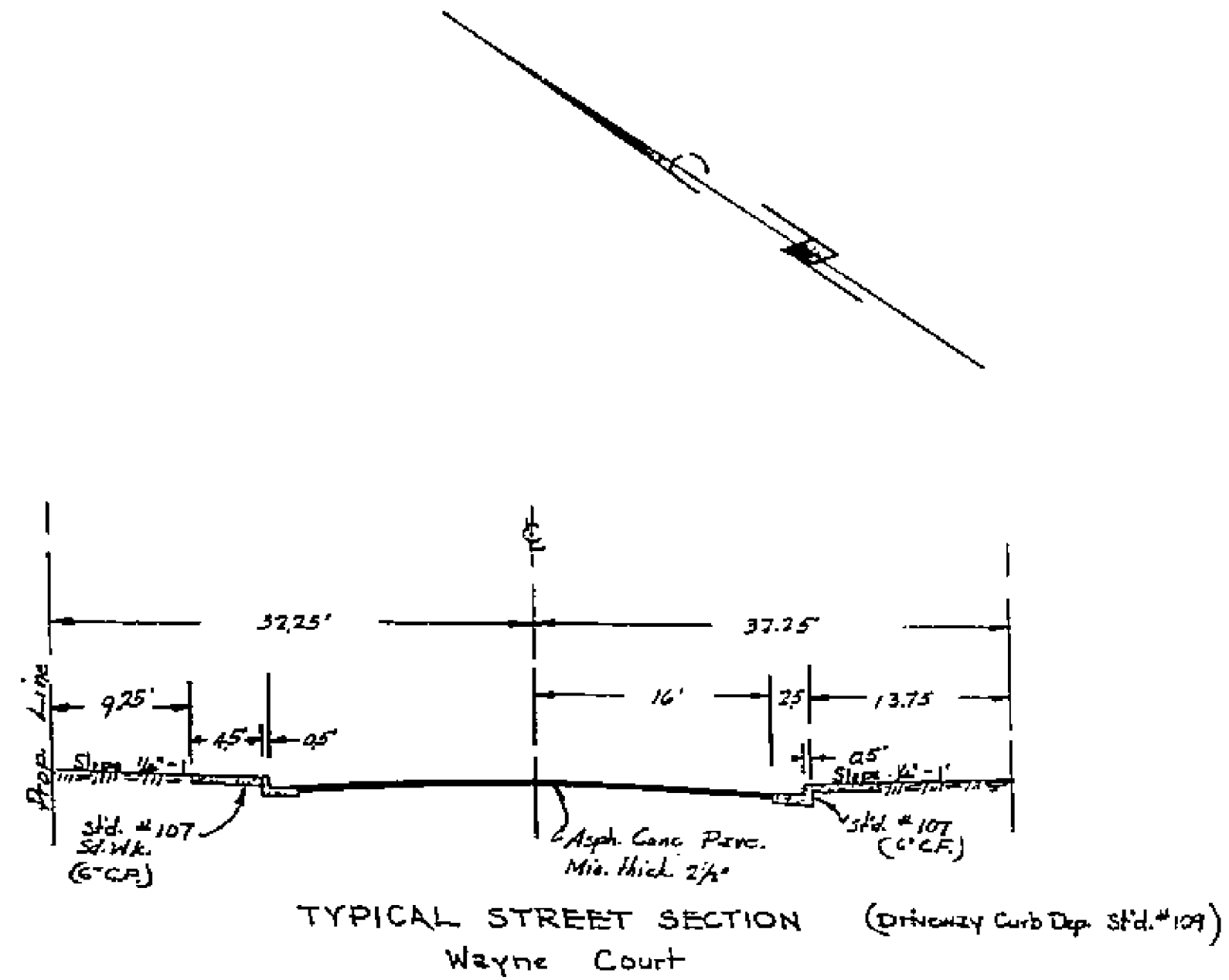
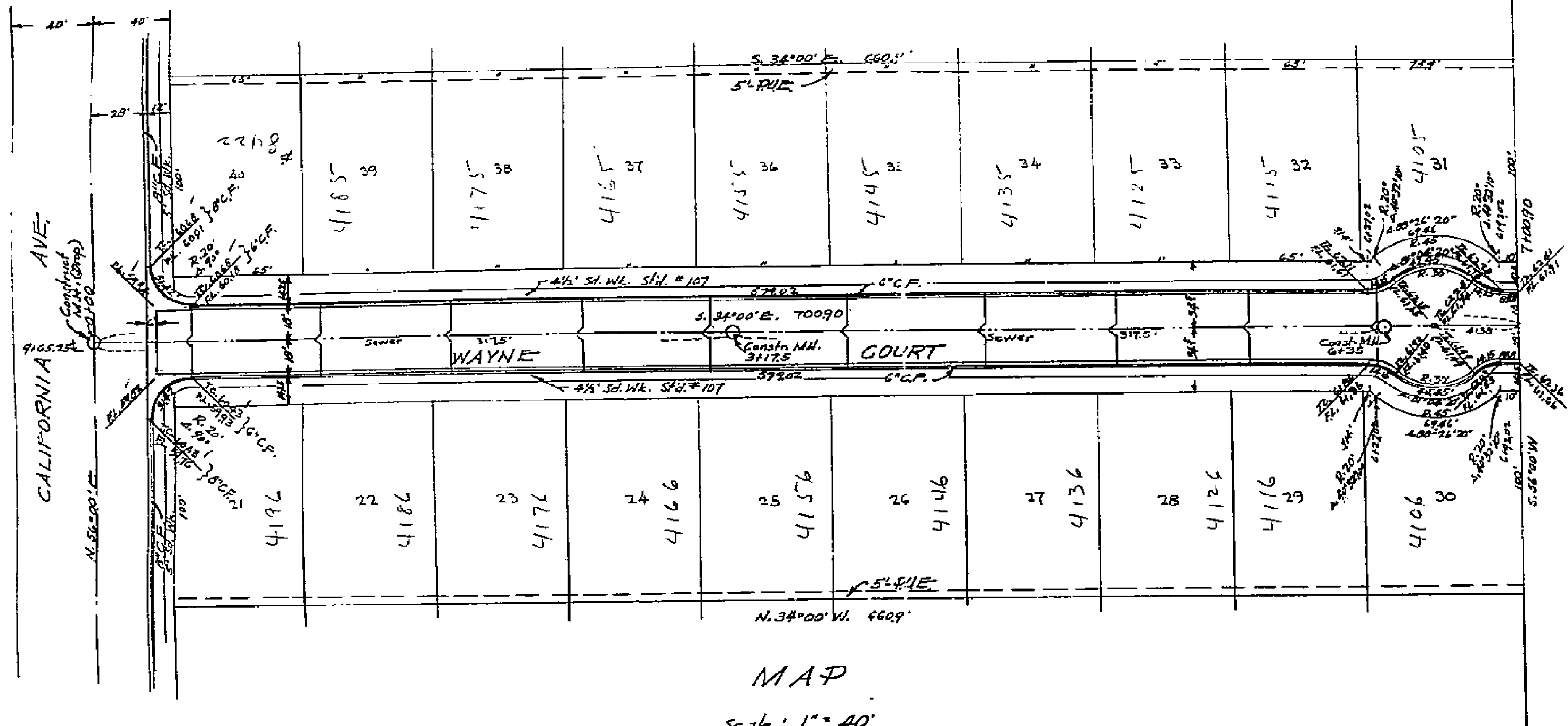
B.M.
Spk. & Load @ Curb Madrona Road
58' Np. & Calif. Ave.
Elev. 741.53

PROFILES
Horiz. 1" = 40'
Scale: Vert. 1" = 2'

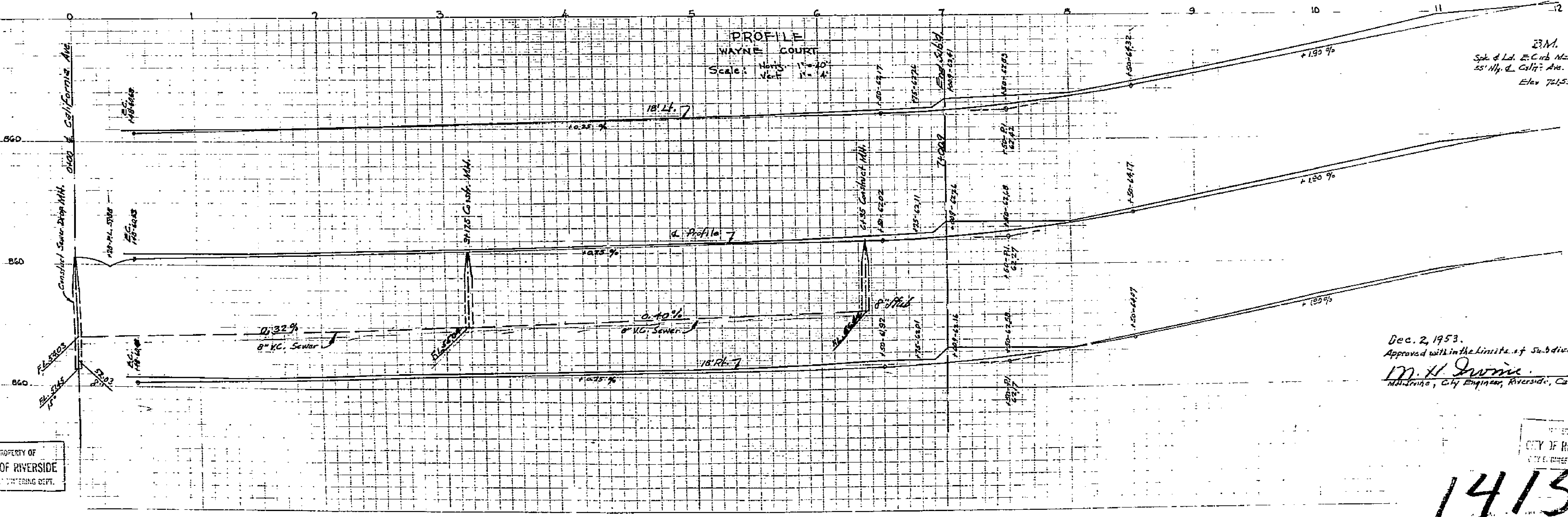
Dec 2, 1953.
Approved within the Limits of Subdivision
M. H. Irvine
M.H. Irvine, City Engineer, Riverside Calif.

1415

PROPERTY OF
CITY OF RIVERSIDE
CITY ENGINEERING DEPT.



CALIFORNIA ESTATES
Curb & Sewer Grades
PROFILES & PLAN
November 1953
Donald J. McKea, Lic. Surveyor



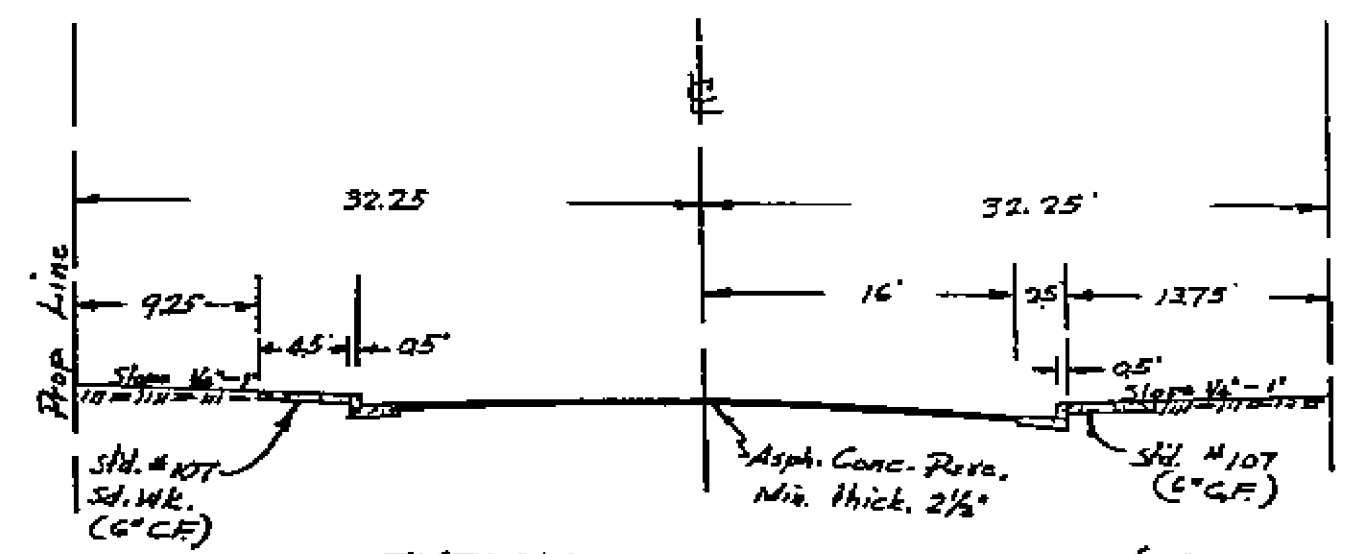
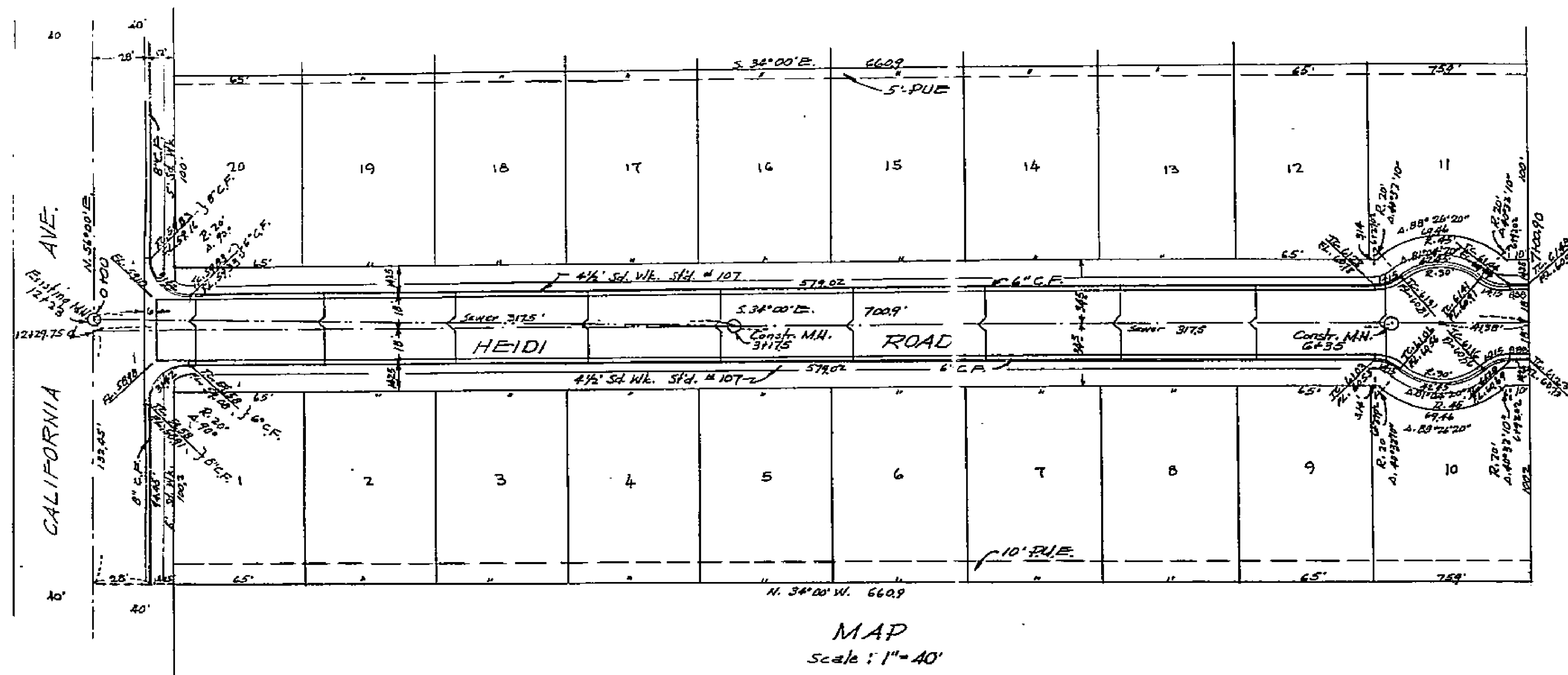
Dec. 2, 1953.
Approved with in the limits of subdivision:
M. H. Irvine
M. H. Irvine, City Engineer, Riverside, Calif.

PROPERTY OF
CITY OF RIVERSIDE
CITY ENGINEERING DEPT.

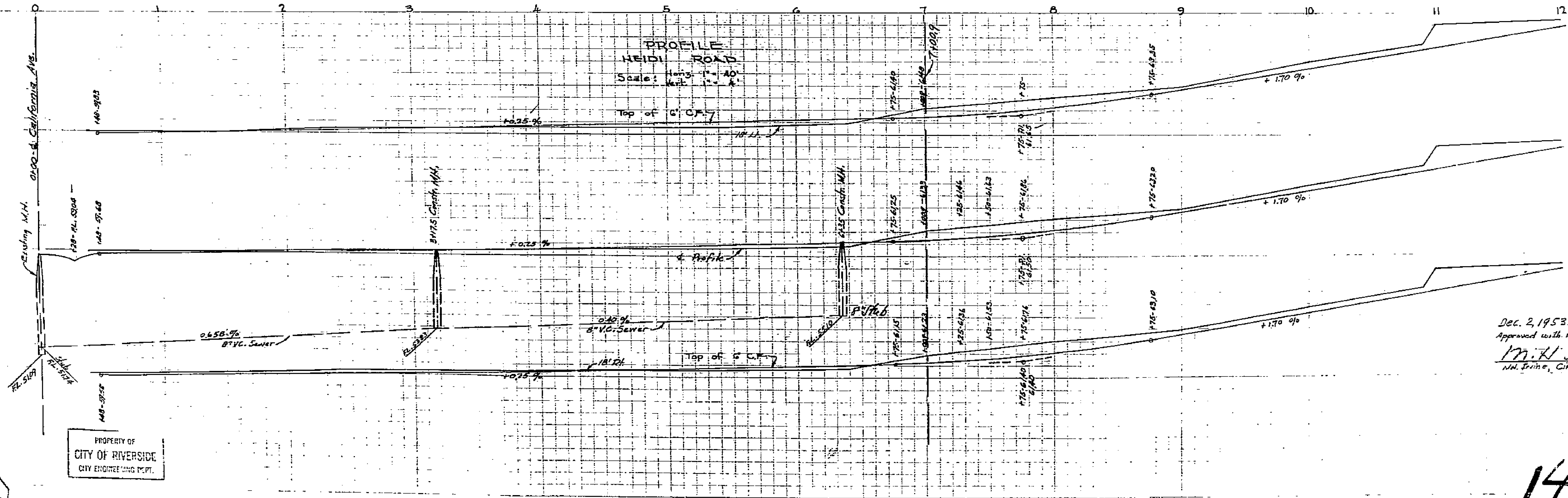
PROPERTY OF
CITY OF RIVERSIDE
CITY ENGINEERING DEPT.

1415

PROPERTY OF
CITY OF RIVERSIDE
CITY ENGINEERING DEPT.



CALIFORNIA ESTATES
Curb & Sewer Grades
PROFILES & PLAN
November, 1953
Donald J. McKee, Lic. Surveyor



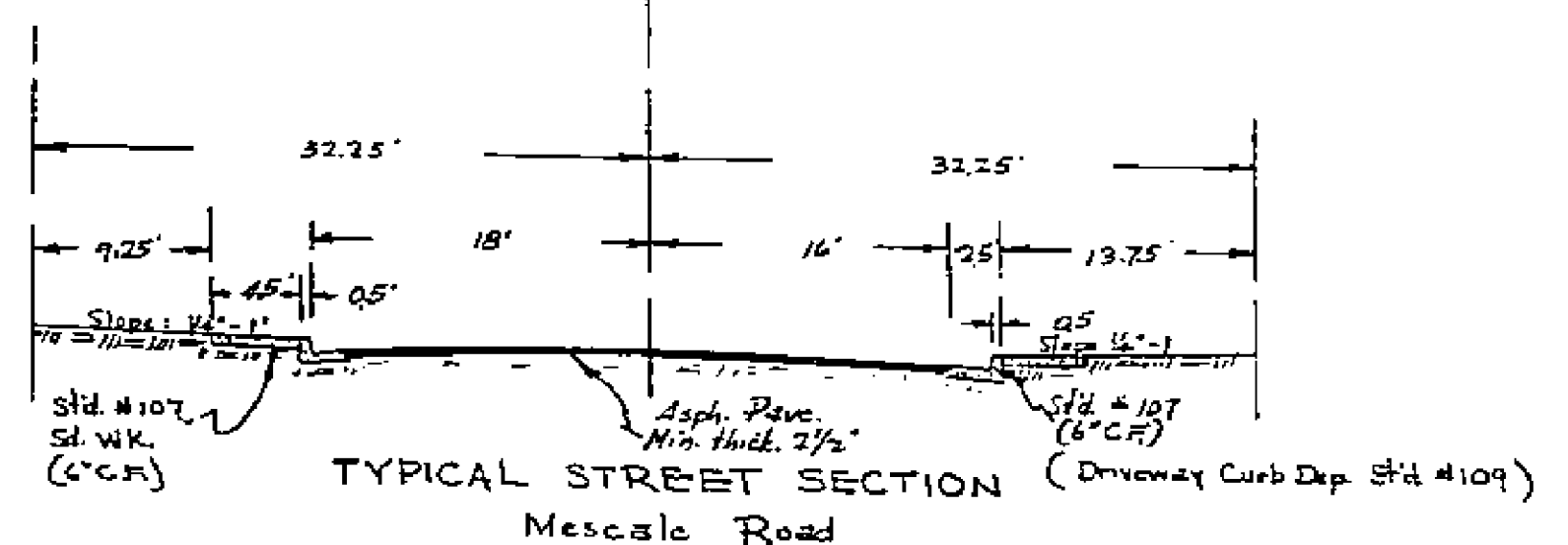
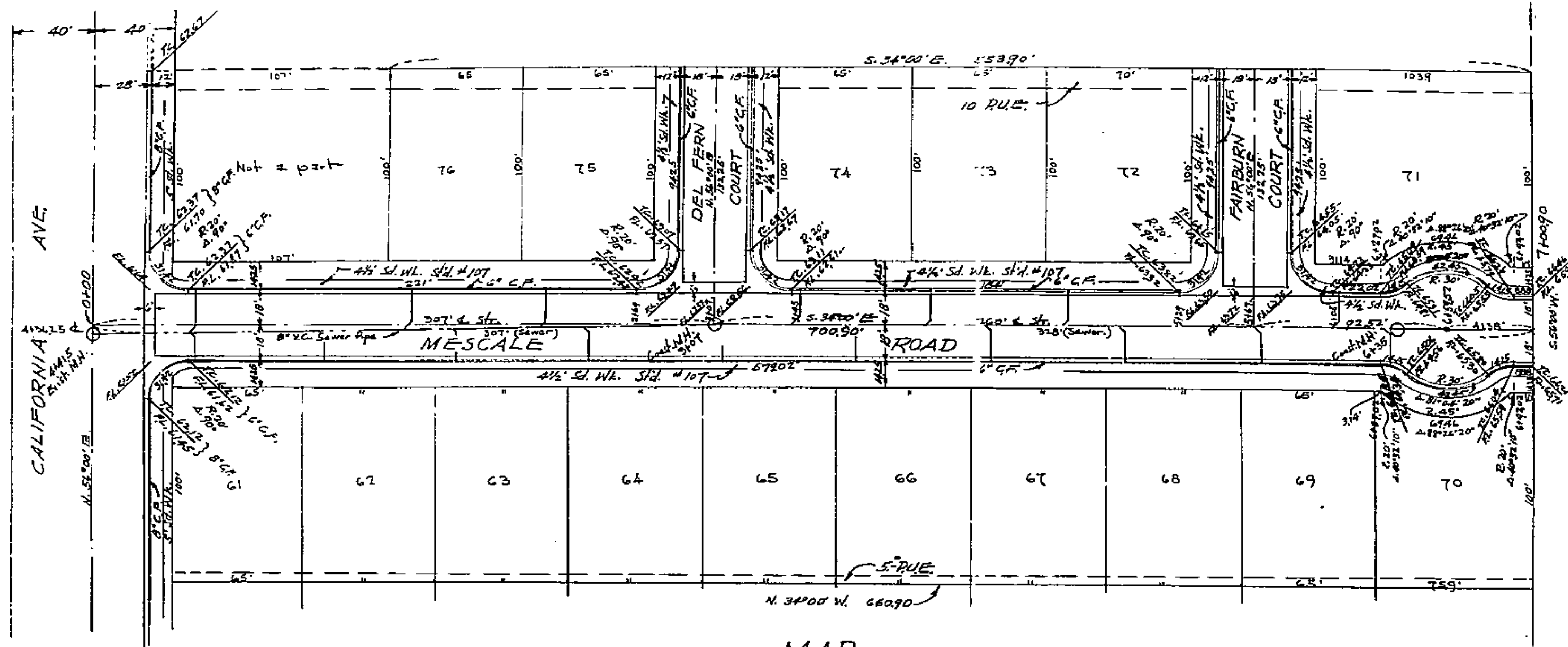
B.M.
Sok. & L. C. C. C. Rd.
55' N. 2. Cal. 1. 1.
Elev. 265.5

Dec. 2, 1953.
Approved with in the limits of Subdivision.
M. H. Irvine
City Engineer, Riverside, Calif.

PROPERTY OF
CITY OF RIVERSIDE
CITY ENGINEERING DEPT.

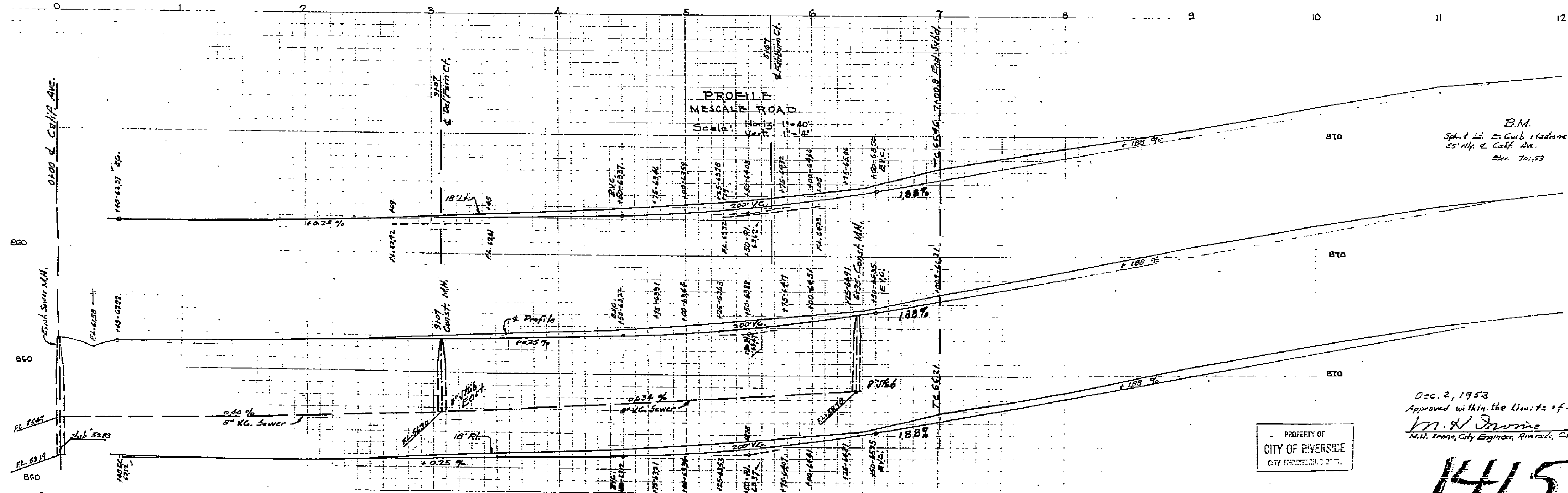
PROPERTY OF
CITY OF RIVERSIDE
CITY ENGINEERING DEPT.

1415



CALIFORNIA ESTATES
Curb & Sewer Grades
PROFILES & PLAN
November, 1953
Donald J. McKee, Lic. Surveyor

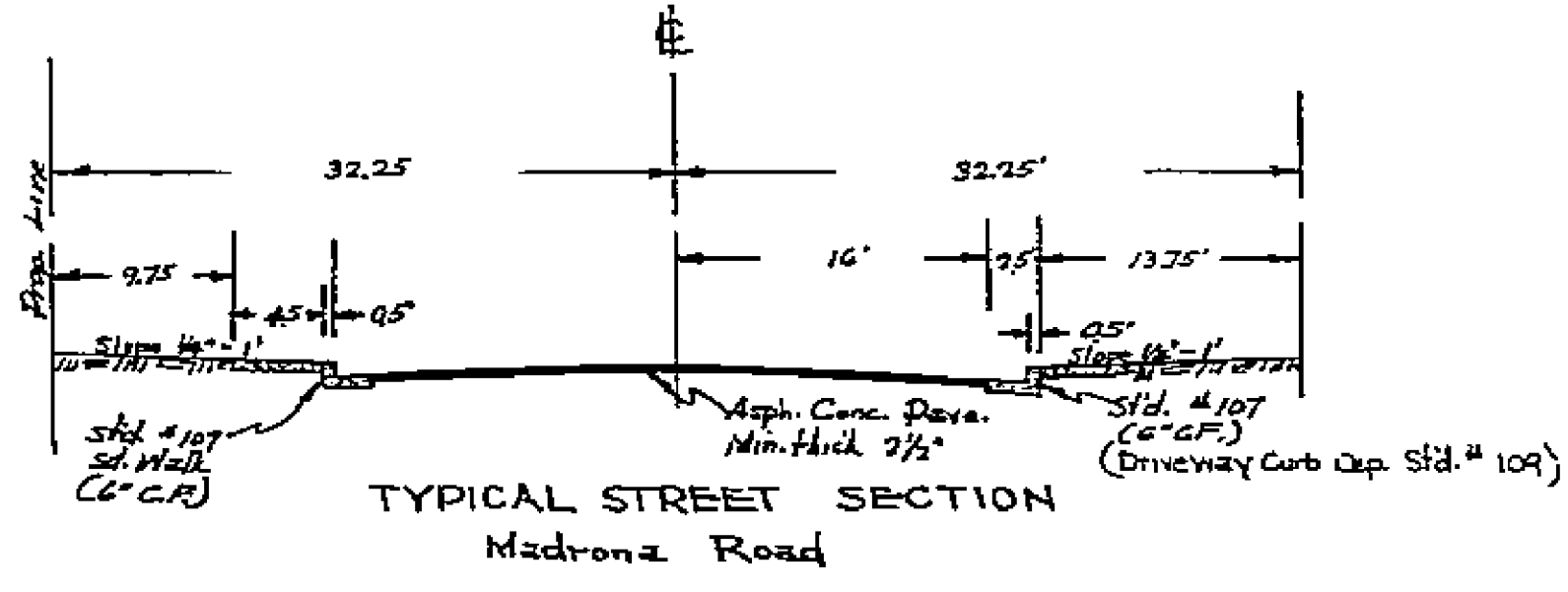
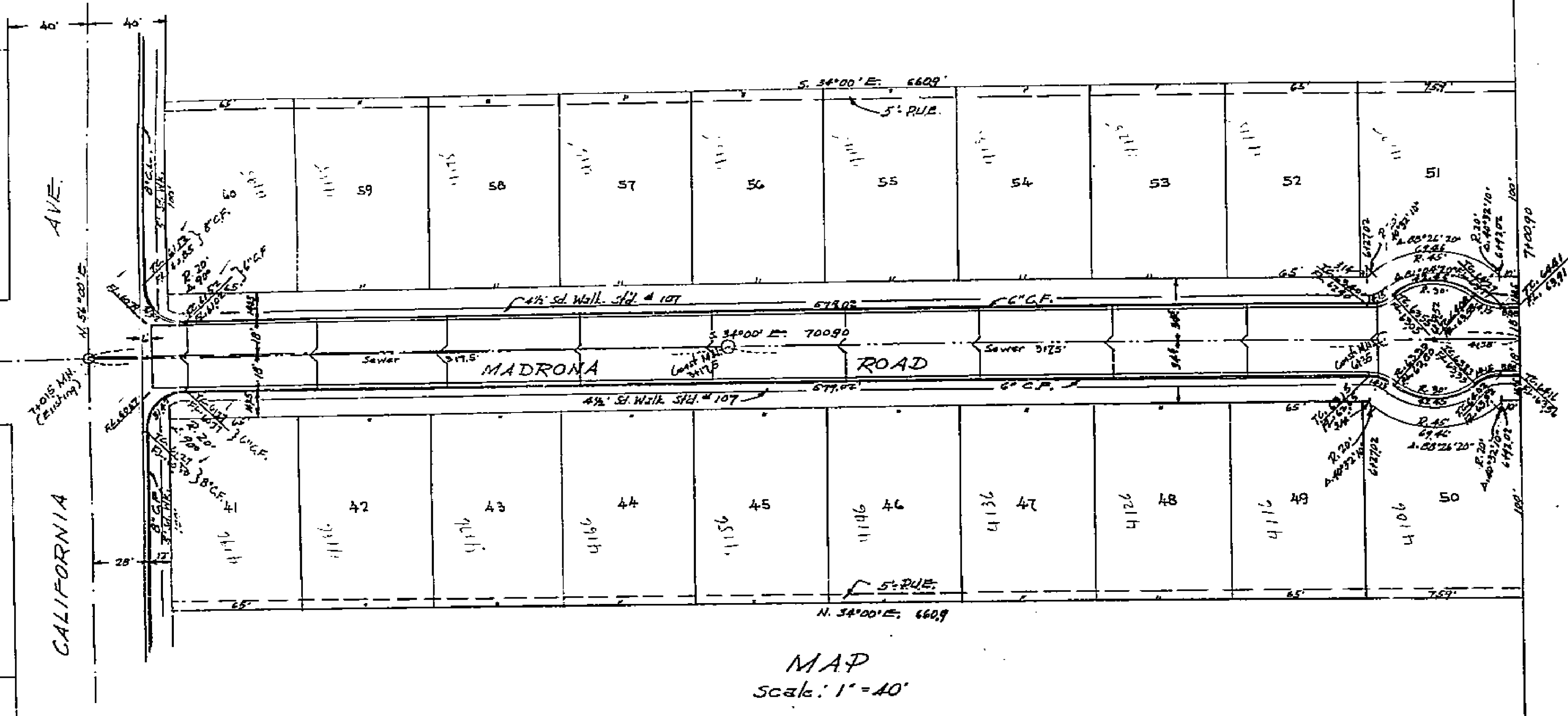
MAP
Scale: 1" = 40'



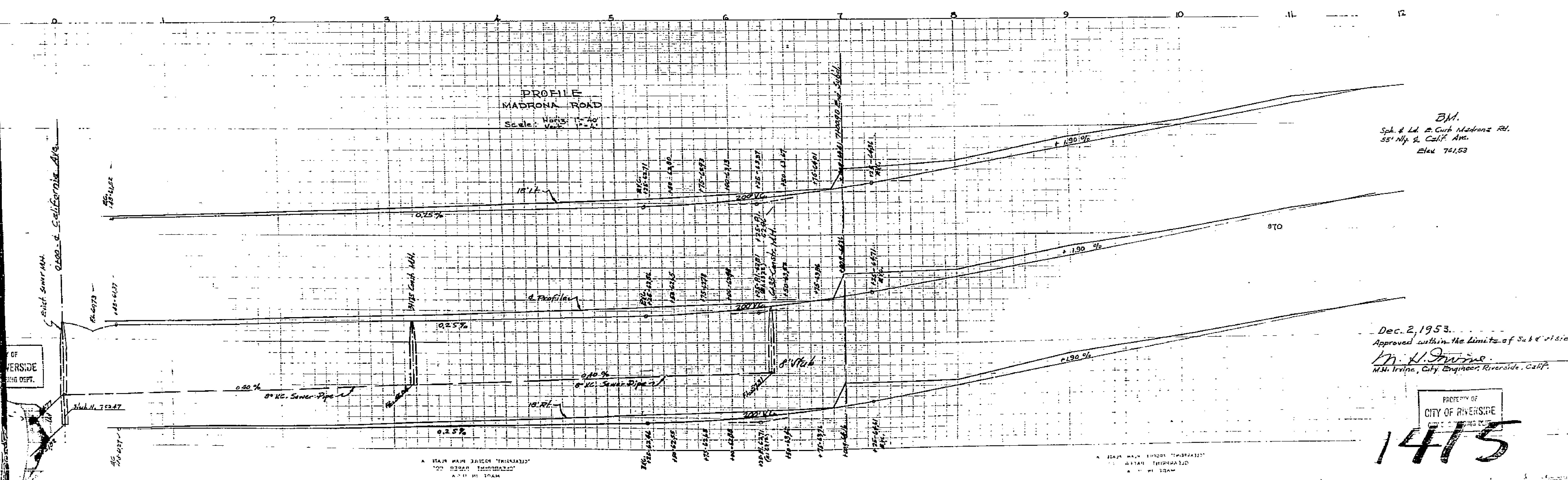
Dec. 2, 1953
Approved within the limits of jurisdiction
M. J. Irvine
M.H. Irvine, City Engineer, Riverside, Calif.

1415

PROPERTY OF
CITY OF RIVERSIDE
CITY ENGINEERING DEPT.



CALIFORNIA ESTATES
Curb & Sewer Grades
PROFILES & PLAN
November, 1953
Donald J. McKee, Lic. Surveyor



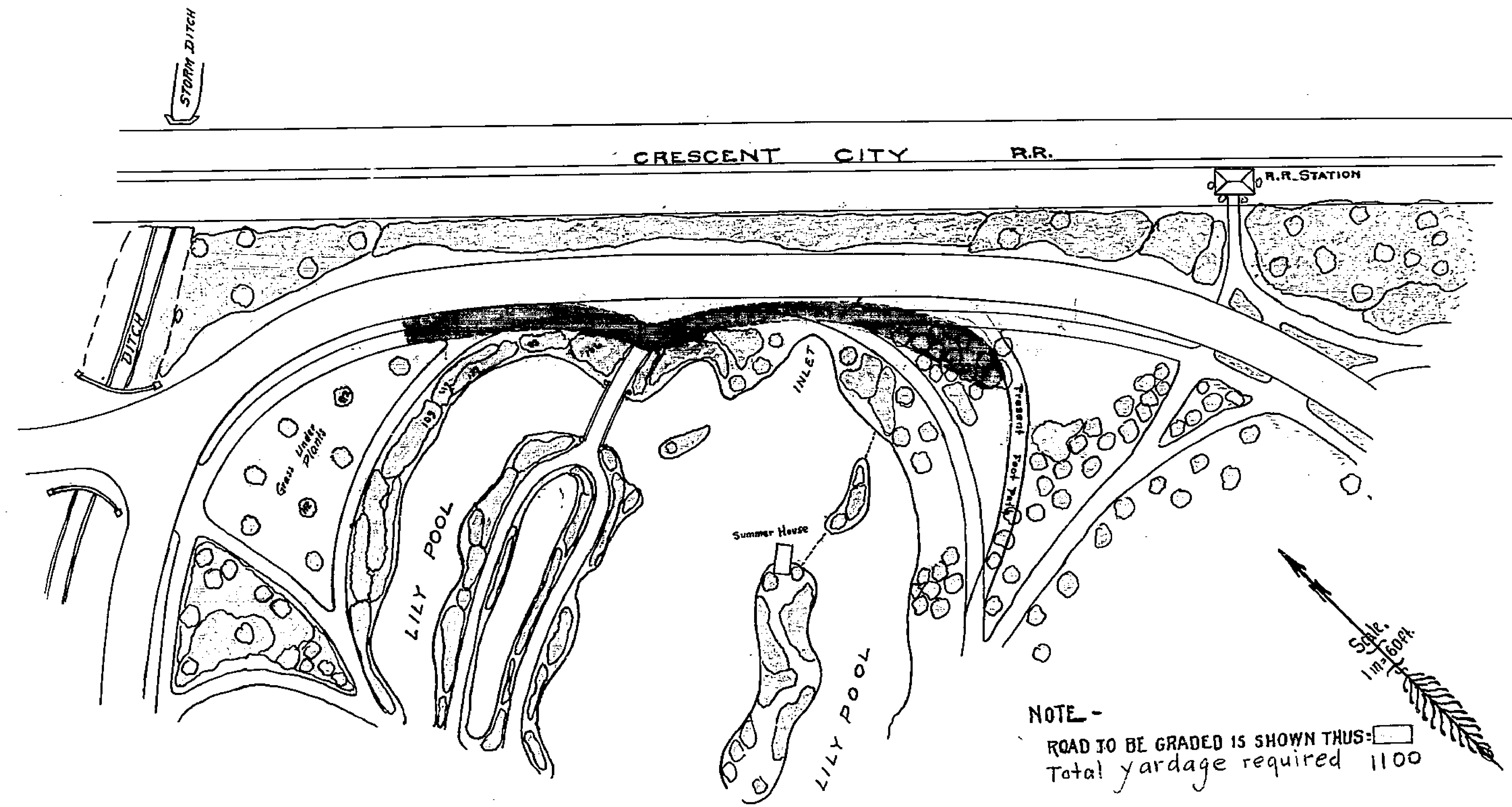
B.M.
Spk. & Ld. to Curb Madrona Rd.
55' Nly. & Calif. Ave.
Elev. 761.53

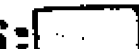
Dec. 2, 1953.
Approved within the Limits of Subdivision
M. H. Irvine
M.H. Irvine, City Engineer, Riverside, Calif.

PROPERTY OF
CITY OF RIVERSIDE
CITY ENGINEERING DEPT.

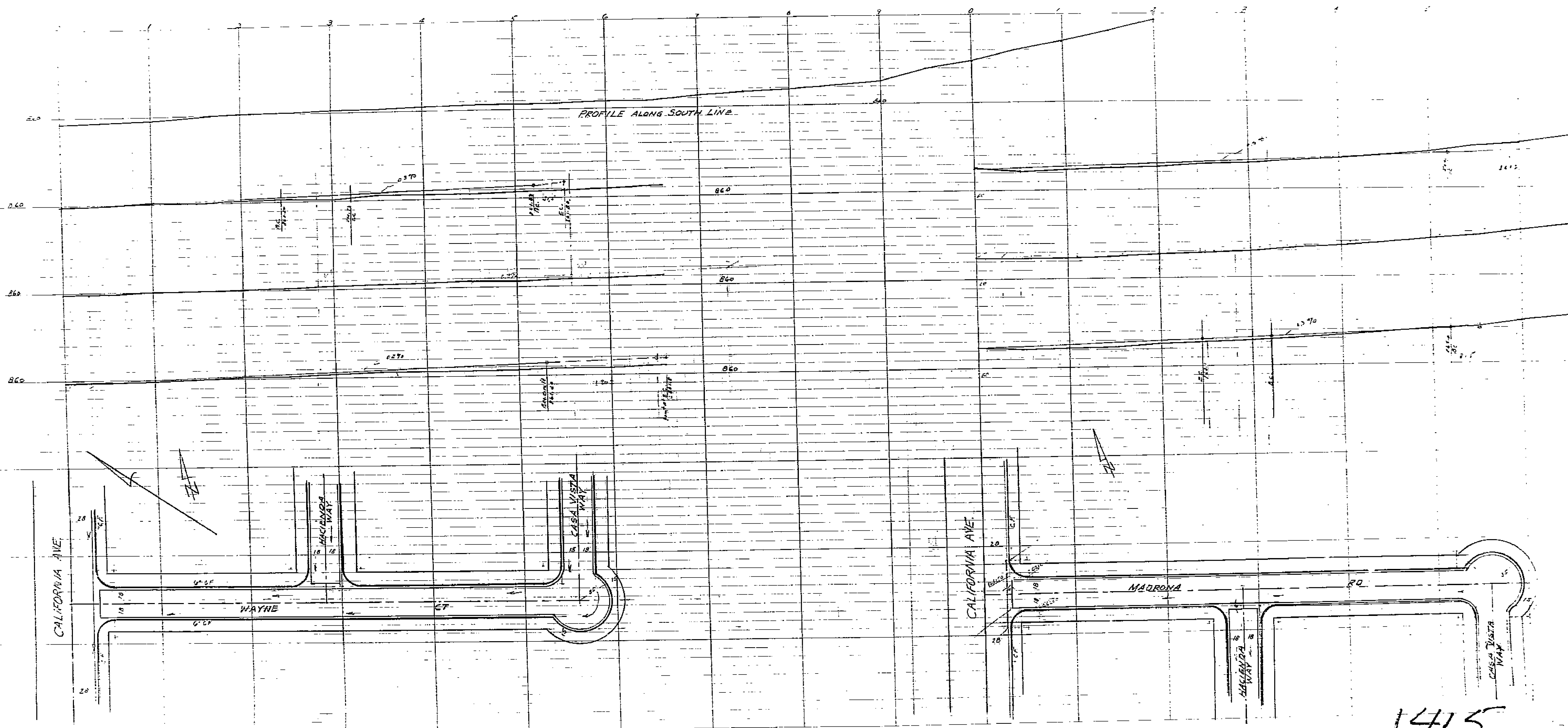
1475

1415

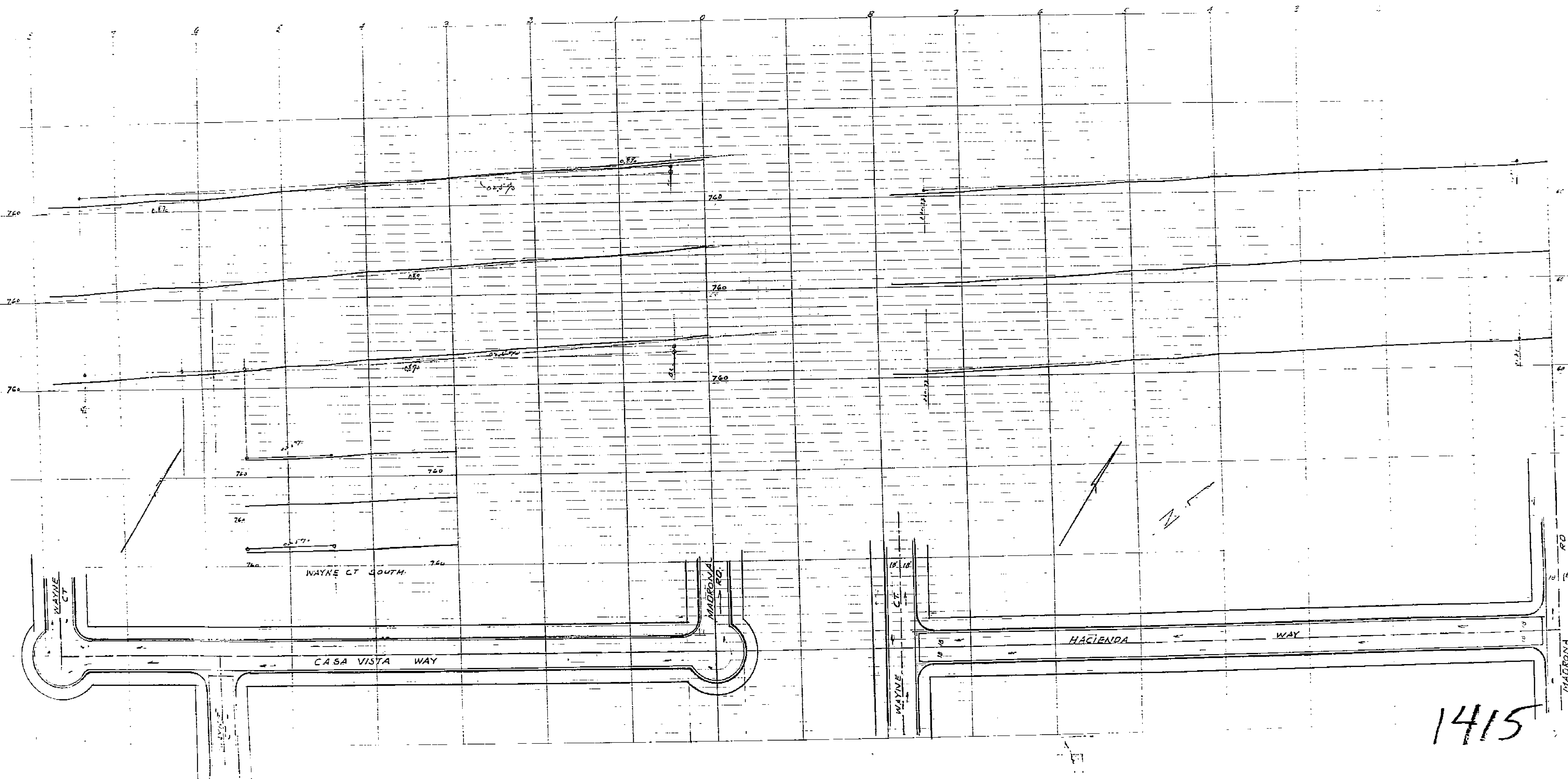


NOTE -
ROAD TO BE GRADED IS SHOWN THUS: 
Total yardage required 1100

Scale
1" = 100'



1415



1415