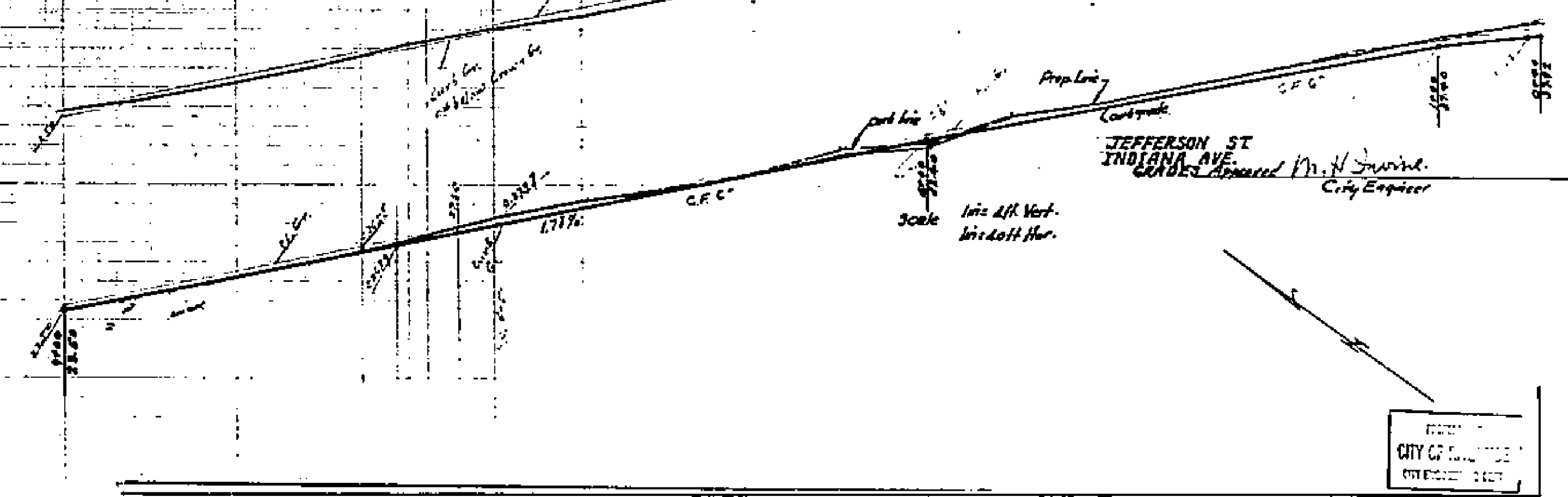
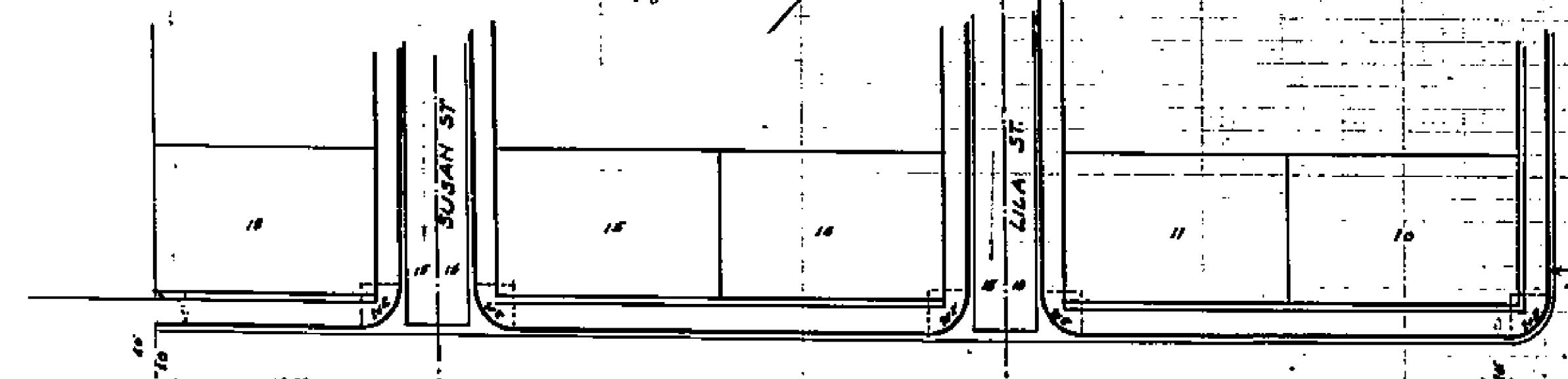
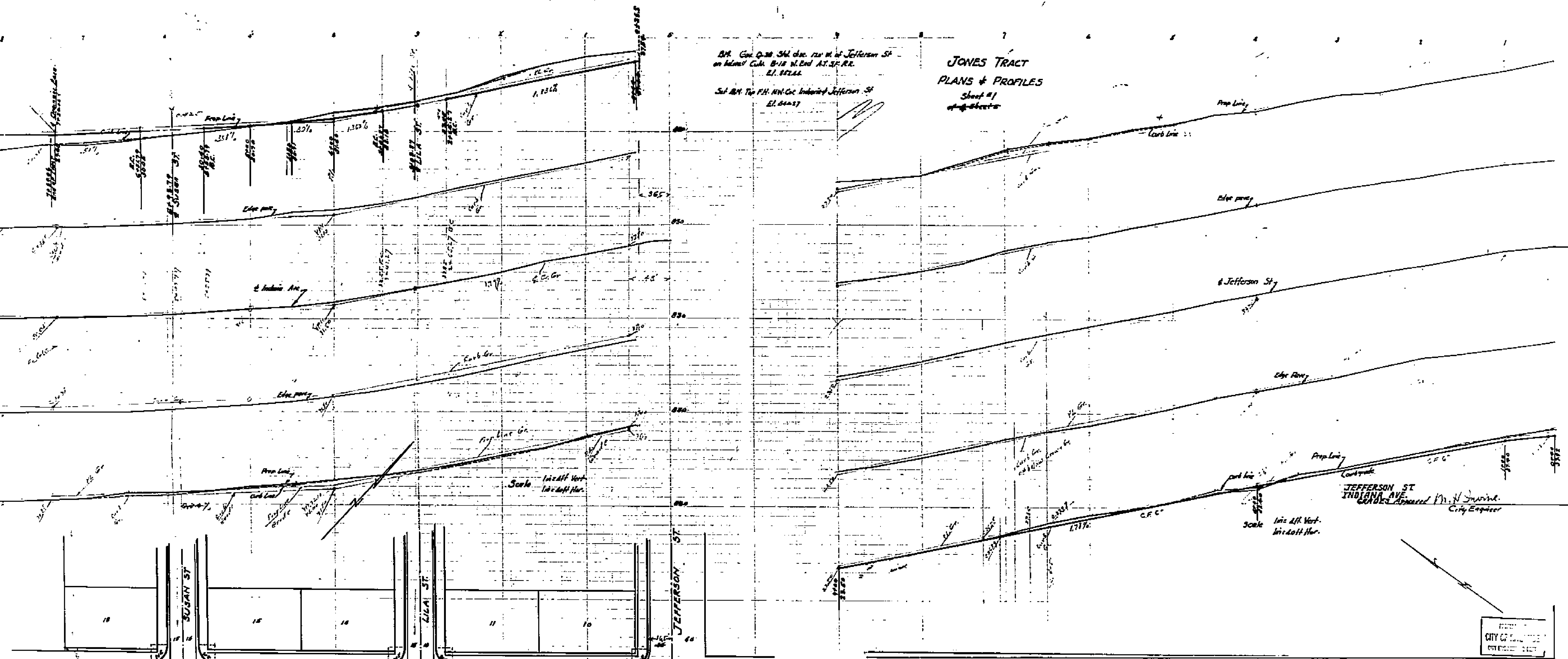


CITY OF INDIANAPOLIS
ENGINEERING DEPT.

2A. Cont. of 3d. Sta. disc. 1st pt. of Jefferson St.
on Miami C&N. B-18 N. End AT. ST. RR.
E.I. 17246
Sd. Bk. Top P.H. H.N. Co. Indiana Jefferson St.
E.I. 64437

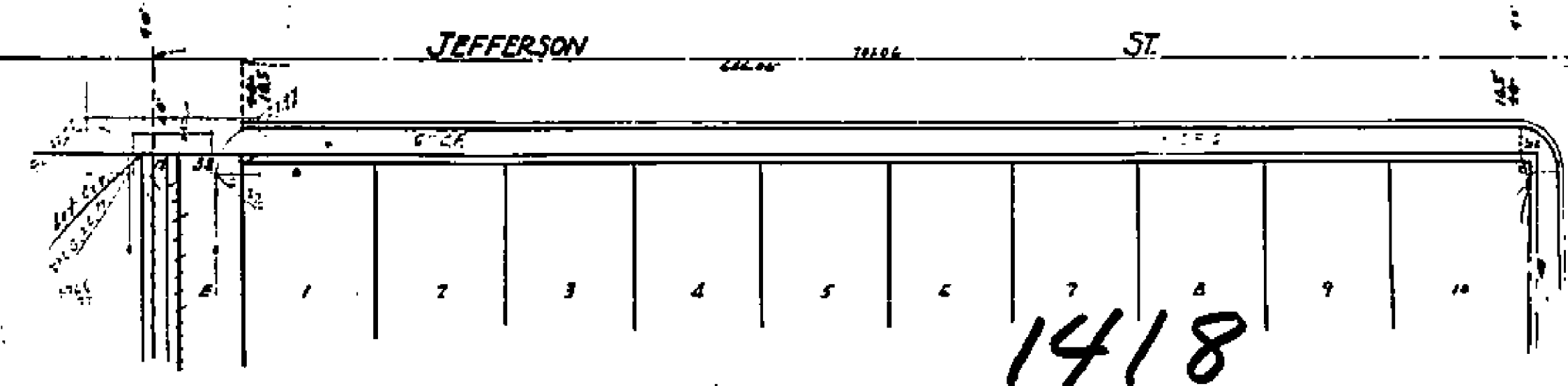
JONES TRACT
PLANS & PROFILES
Sheet #1
of 4 sheets

CITY OF INDIANAPOLIS
ENGINEERING DEPT.

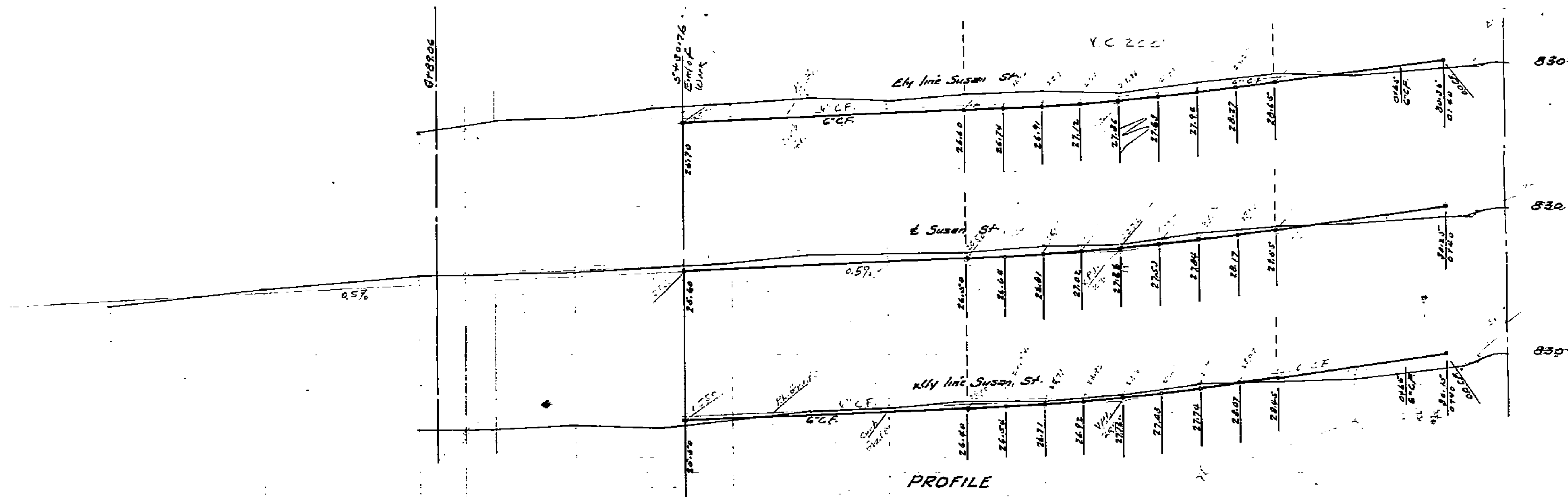


CITY OF INDIANAPOLIS
ENGINEERING DEPT.

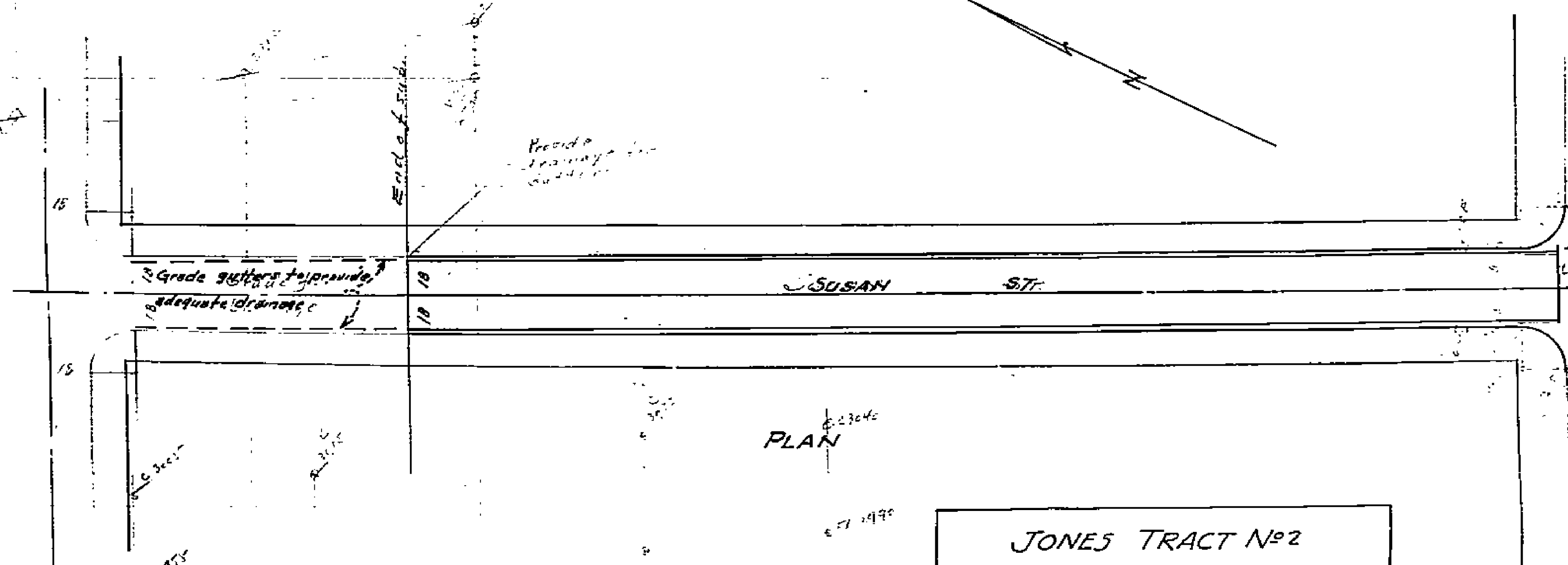
CITY OF INDIANAPOLIS
ENGINEERING DEPT.



1418

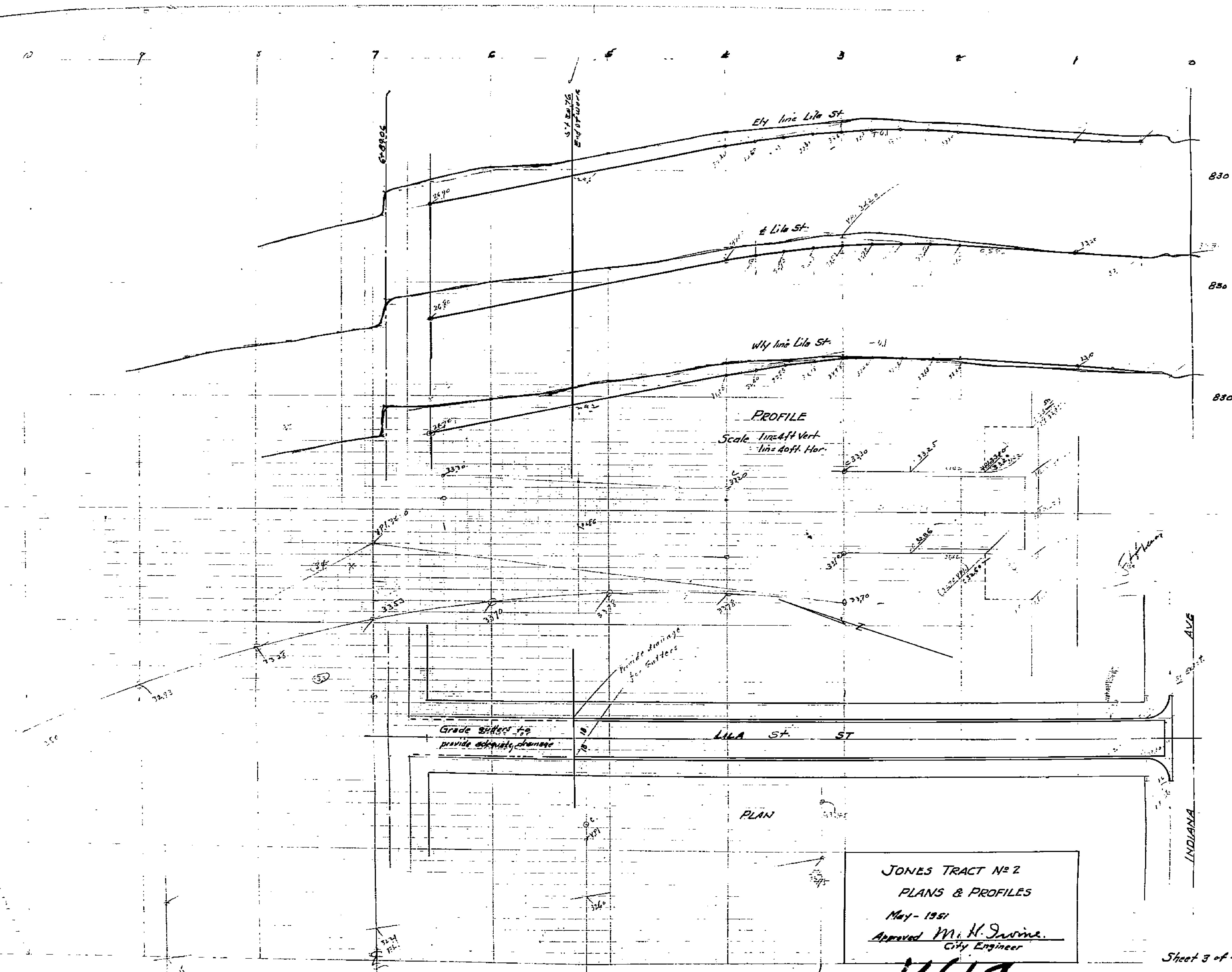


PROFILE
 Scale 1" = 4' Vert.
 1" = 40' Hor.



JONES TRACT No 2
 PLANS & PROFILES
 May 1951
 Approved M. H. Swins
 City Engineer

1418



JONES TRACT No 2
 PLANS & PROFILES
 May - 1951
 Approved M. H. Jarvine.
 City Engineer

1418

PROFILES LILA ST.

PROPERTY OF
CITY OF RIVERSIDE
CITY ENGINEERING DEPT.

PROPERTY OF
CITY OF RIVERSIDE
CITY ENGINEERING DEPT.

PLANS & PROFILES JONES TRACT NO. 2

SCALE
VERT. 1" = 4'
HORIZ. 1" = 40'
B.M. EL 840.27
Checked x on run by Hyl.
NW Cor Indiana & Jefferson

7496.49	7-50.77
37.69	30.23
7458.80	7458.80
20	
7458.80	
7496.49	7-50.77
37.69	30.23
7458.80	7458.80
20	
7458.80	

Approved *M. H. Durin*
CITY ENGINEER.

PROPERTY OF
CITY OF RIVERSIDE
CITY ENGINEERING DEPT.

PROPERTY OF
CITY OF RIVERSIDE
CITY ENGINEERING DEPT.

THIS STANDARD MAP
IS A PART OF
PROF. E. PLATE A 4 X 20
FOR LILA ST.

KEUFFEL & ESSER CO.
NEW YORK

THIS STANDARD MAP
IS A PART OF
PROF. E. PLATE A 4 X 20
FOR LILA ST.

1418

Susan St.

PLANS & PROFILES JONES TRACT No. 3

SCALE
VERT. 1"=4'
HORIZ. 1"=40'

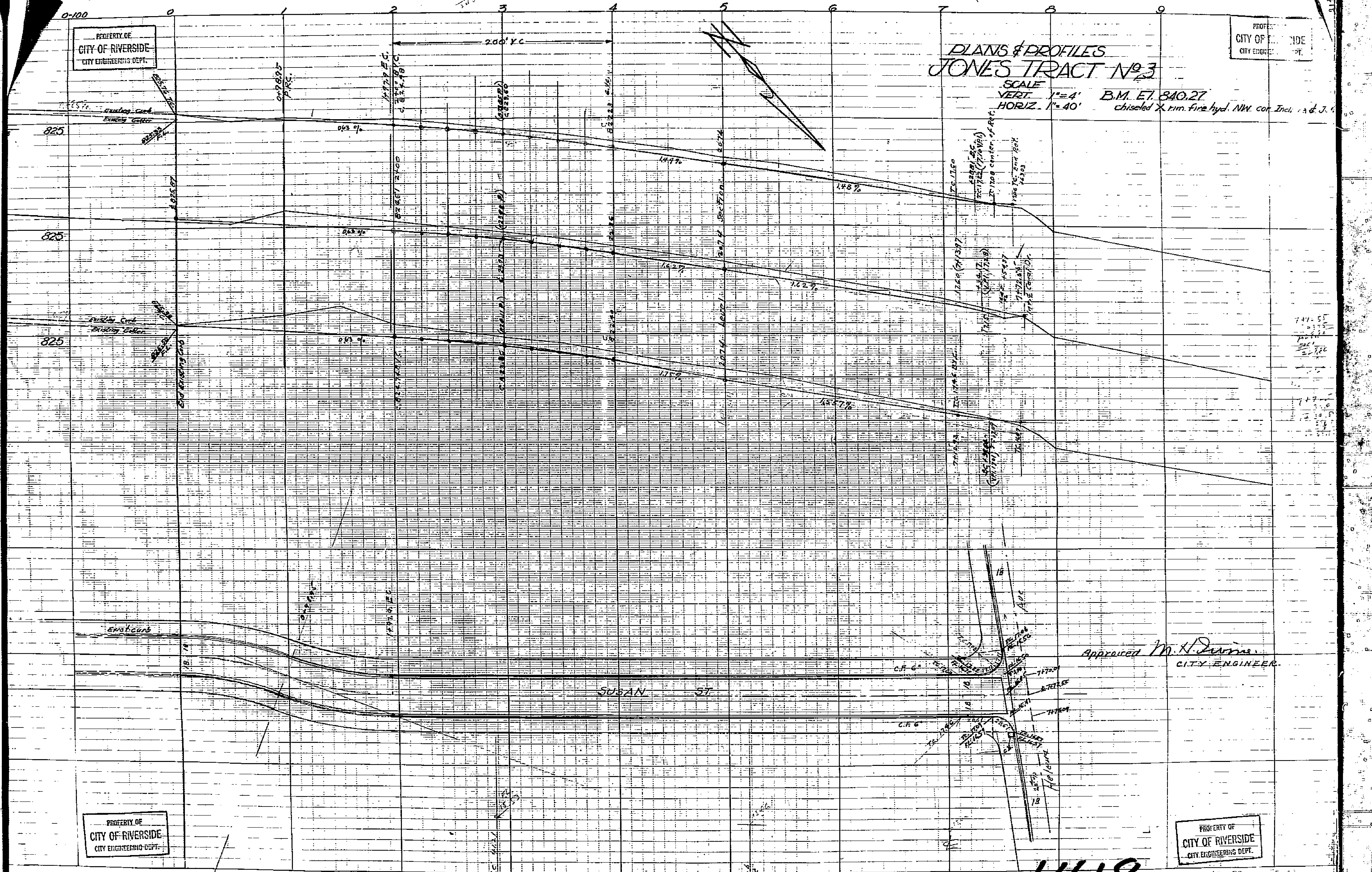
B.M. E.T. 840.27
chiseled X rim. fire hydr. NW cor. Ind. & J. St.

PROPERTY OF
CITY OF RIVERSIDE
CITY ENGINEERING DEPT.

PROPERTY OF
CITY OF RIVERSIDE
CITY ENGINEERING DEPT.

PROPERTY OF
CITY OF RIVERSIDE
CITY ENGINEERING DEPT.

PROPERTY OF
CITY OF RIVERSIDE
CITY ENGINEERING DEPT.



Approved *M. H. Durbin*
CITY ENGINEER.

1418

THE STANDARD
PROFILE PLATE A 4/20
MADE IN U.S.A.

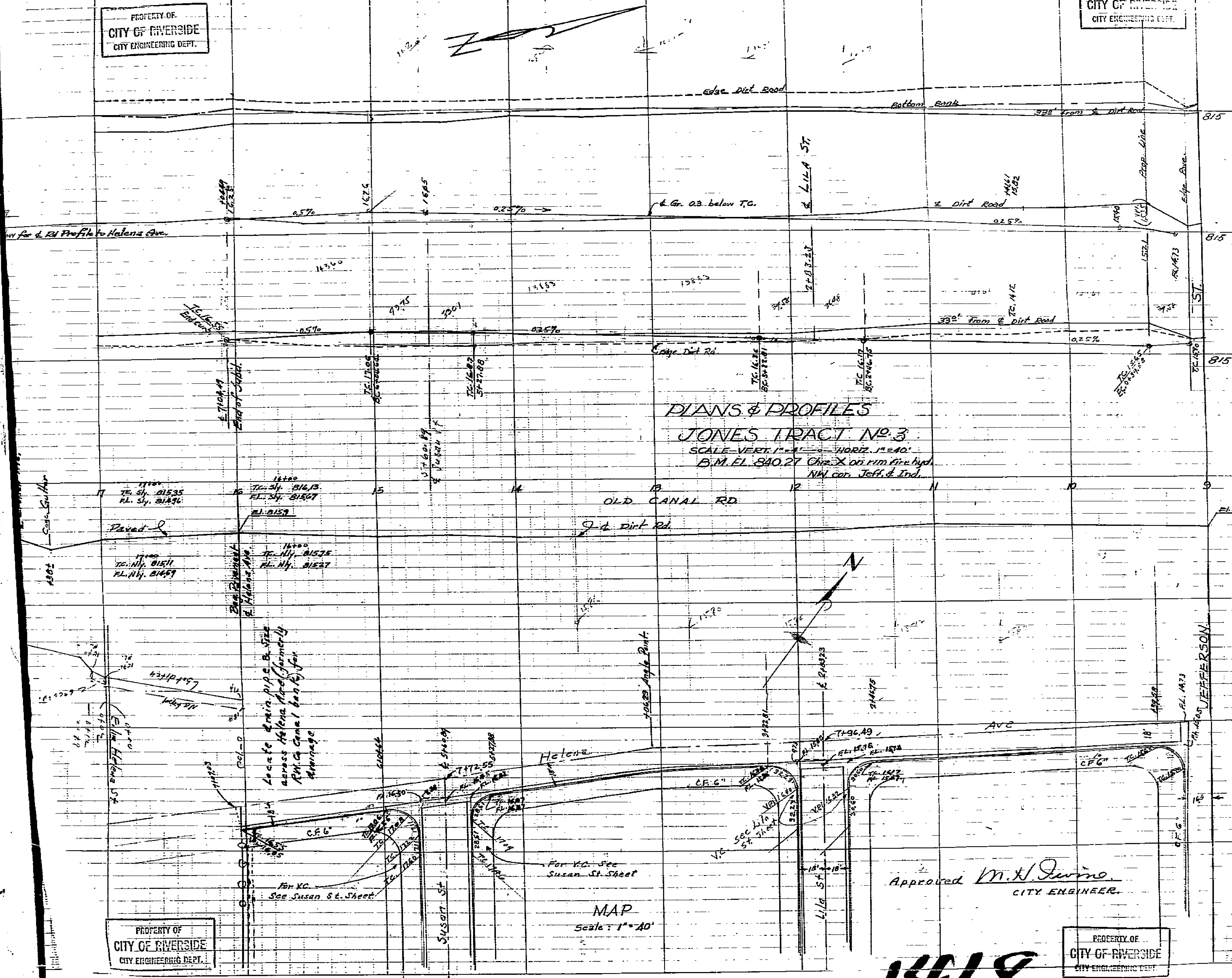
KEUFFEL & ESSER CO.
NEW YORK

THE STANDARD
PROFILE PLATE A 4/20
MADE IN U.S.A.

PROPERTY OF
CITY OF RIVERSIDE
CITY ENGINEERING DEPT.

PROPERTY OF
CITY OF RIVERSIDE
CITY ENGINEERING DEPT.

CITY OF RIVERSIDE
CITY ENGINEERING DEPT.



PLANS & PROFILES
 JONES TRACT NO. 3
 SCALE VERT. 1" = 40' - HORIZ. 1" = 40'
 B.M. EL. 840.27 Chis. X on rim fire hyd.
 NW cor. Jeff. & Ind.

MAP
 Scale: 1" = 40'

Approved *M.H. Irvine*
 CITY ENGINEER.

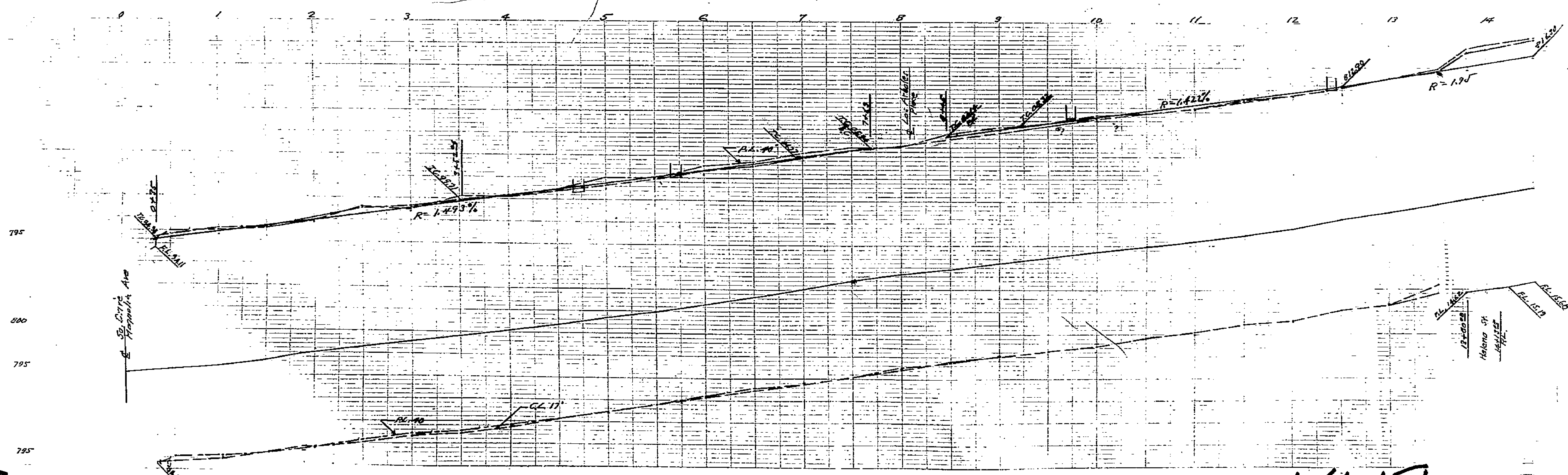
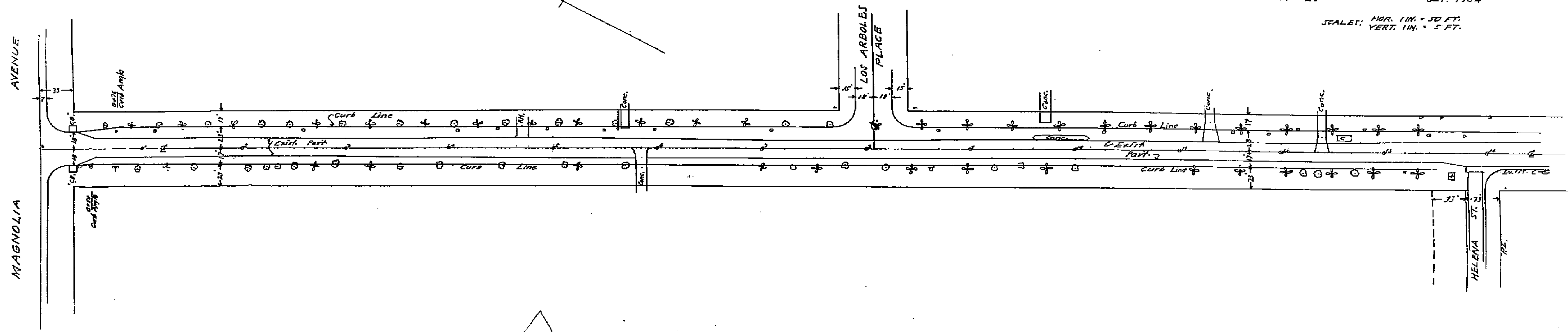
PROPERTY OF
CITY OF RIVERSIDE
CITY ENGINEERING DEPT.

PROPERTY OF
CITY OF RIVERSIDE
CITY ENGINEERING DEPT.

1418

PLAN NO 1418
 FOR CURB GRADES ON
 JEFFERSON STREET
 BETWEEN MAGNOLIA AVE. & HELENA ST.
 F.B. 559-29 OCT. 1954

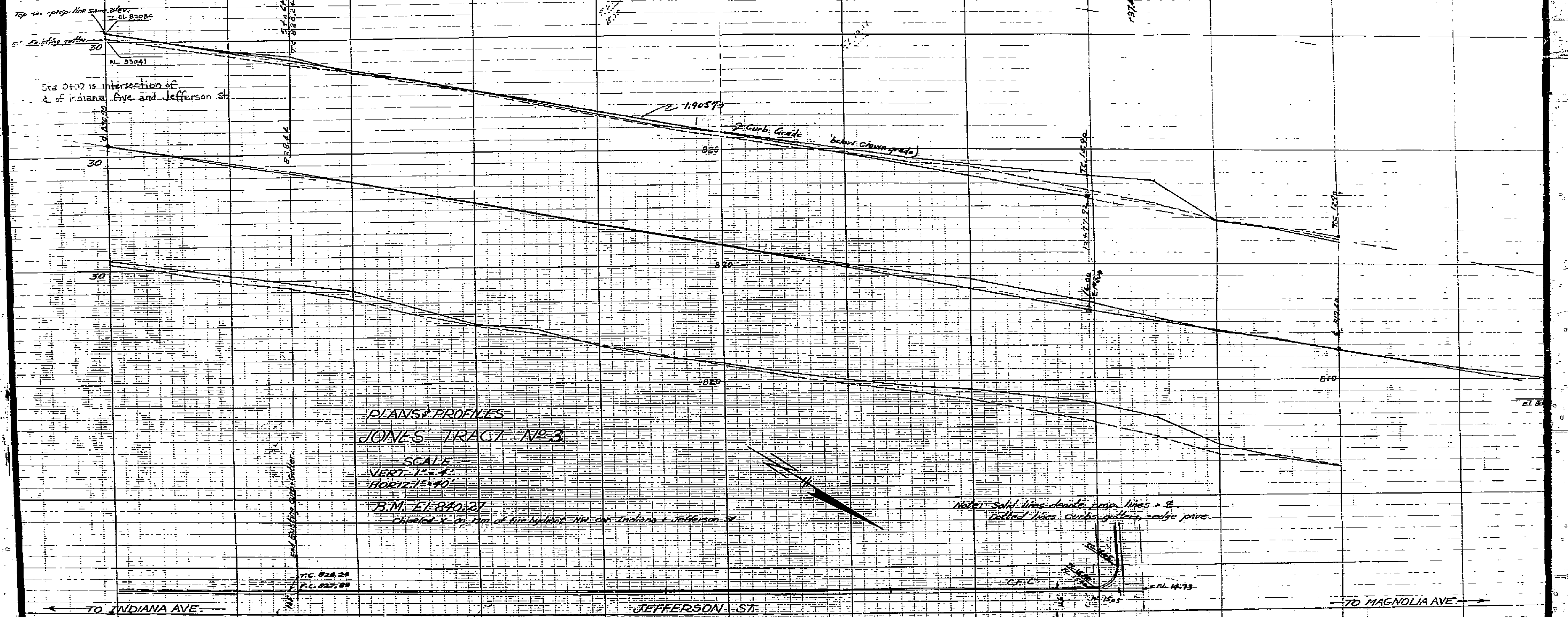
SCALE: HOR. 1 IN. = 50 FT.
 VERT. 1 IN. = 5 FT.



1418

PROPERTY OF
CITY OF RIVERSIDE
CITY ENGINEERING DEPT.

PROPERTY OF
CITY OF RIVERSIDE
CITY ENGINEERING DEPT.



PLANS & PROFILES
JONES' TRACT NO. 3

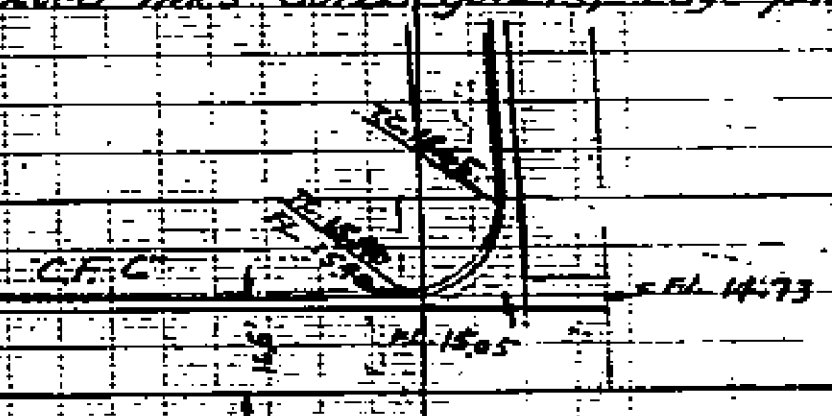
SCALE -
VERT. 1" = 4'
HORIZ. 1" = 40'

B.M. - F1-840.21
Checked X on rim of the highest NW cor. Indiana & Jefferson St.

1/4" SECTION OF EXISTING CURB CUTTER

1/4" SECTION OF EXISTING CURB CUTTER
T.C. 828.24
R.L. 827.88

Notes: Solid lines denote prop. lines & dotted lines curbs, gutters, edge pave.



← TO INDIANA AVE. →

JEFFERSON ST.

→ TO MAGNOLIA AVE. →

PROPERTY OF
CITY OF RIVERSIDE
CITY ENGINEERING DEPT.

PROPERTY OF
CITY OF RIVERSIDE
CITY ENGINEERING DEPT.

Approved *M. H. Duvine*
CITY ENGINEER.

THIS STANDARD
DRAWING BY
PROFILE PLATE A 4 X 20
MAY BE USED
MAY 1924

KIEFFEL & BESSER CO.
NEW YORK

THIS STANDARD
DRAWING BY
PROFILE PLATE A 4 X 20
MAY BE USED
MAY 1924

1418

THIS STANDARD
DRAWING BY
PROFILE PLATE A 4 X 20
MAY BE USED
MAY 1924