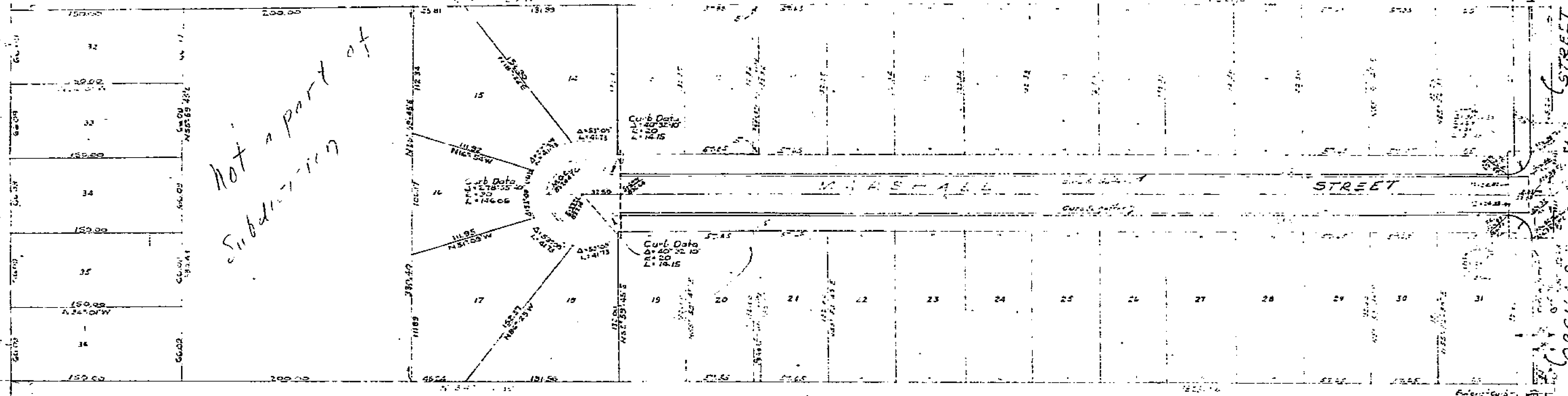


PART OF  
CITY OF RIVERSIDE

INDIANA AVENUE  
14-42

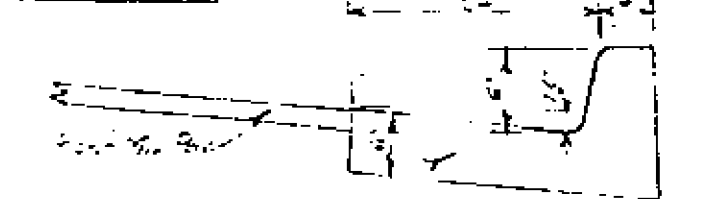
Not a part of  
subdivision



STREET U. AND S. RIGGLE  
ALEX. MAYOR  
RIVERSIDE CALIFORNIA

Office 2119

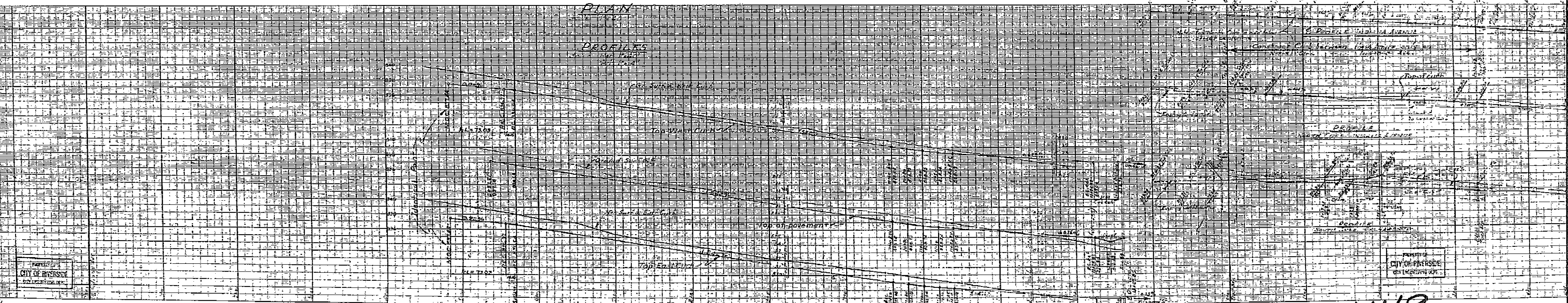
PROPOSED  
CITY OF RIVERSIDE  
ENGINEERING DEPT.



Approved this 16<sup>th</sup> day of April, 1911  
W. J. DAVIS  
City Engineer Riverside

PLAN

PROFILES



PROPOSED  
CITY OF RIVERSIDE  
ENGINEERING DEPT.

1419

PROPOSED  
CITY OF RIVERSIDE  
ENGINEERING DEPT.

PROPOSED  
CITY OF RIVERSIDE  
ENGINEERING DEPT.

PROPOSED  
CITY OF RIVERSIDE  
ENGINEERING DEPT.

PROPOSED  
CITY OF RIVERSIDE  
ENGINEERING DEPT.

PROPOSED  
CITY OF RIVERSIDE  
ENGINEERING DEPT.