

PROPERTY OF
CITY OF RIVERSIDE
CITY ENGINEERING DEPT.

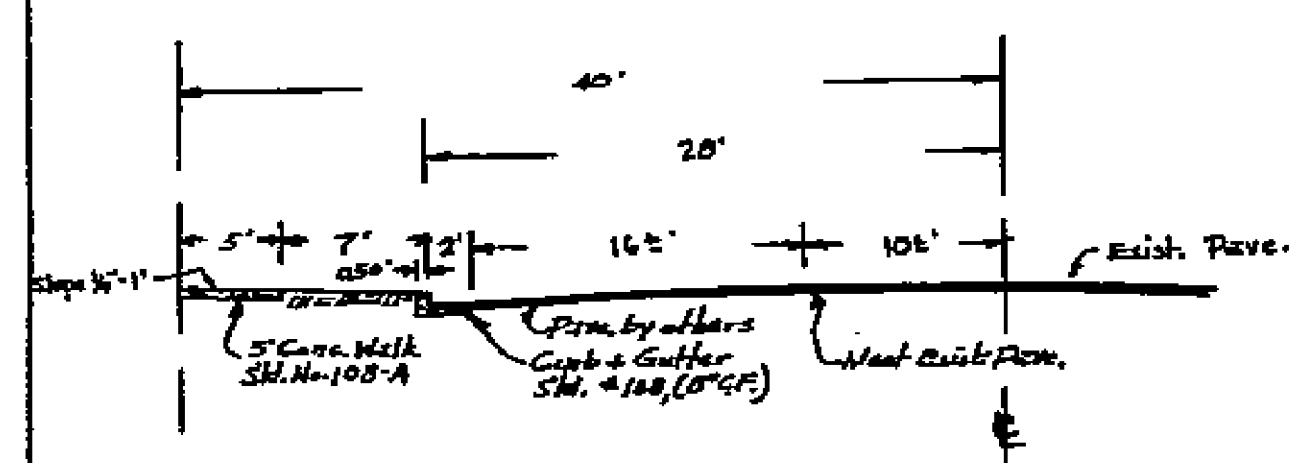
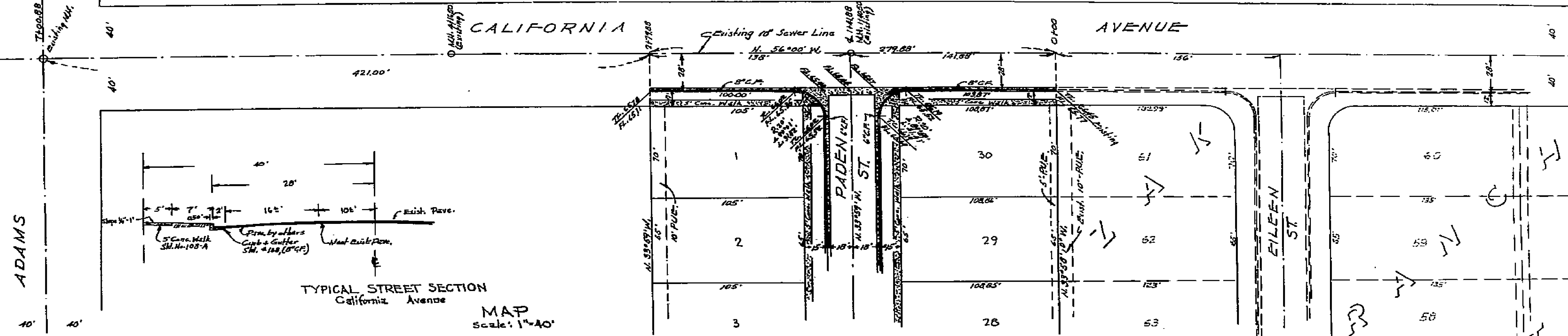
PROPERTY OF
CITY OF RIVERSIDE
CITY ENGINEERING DEPT.

STREET

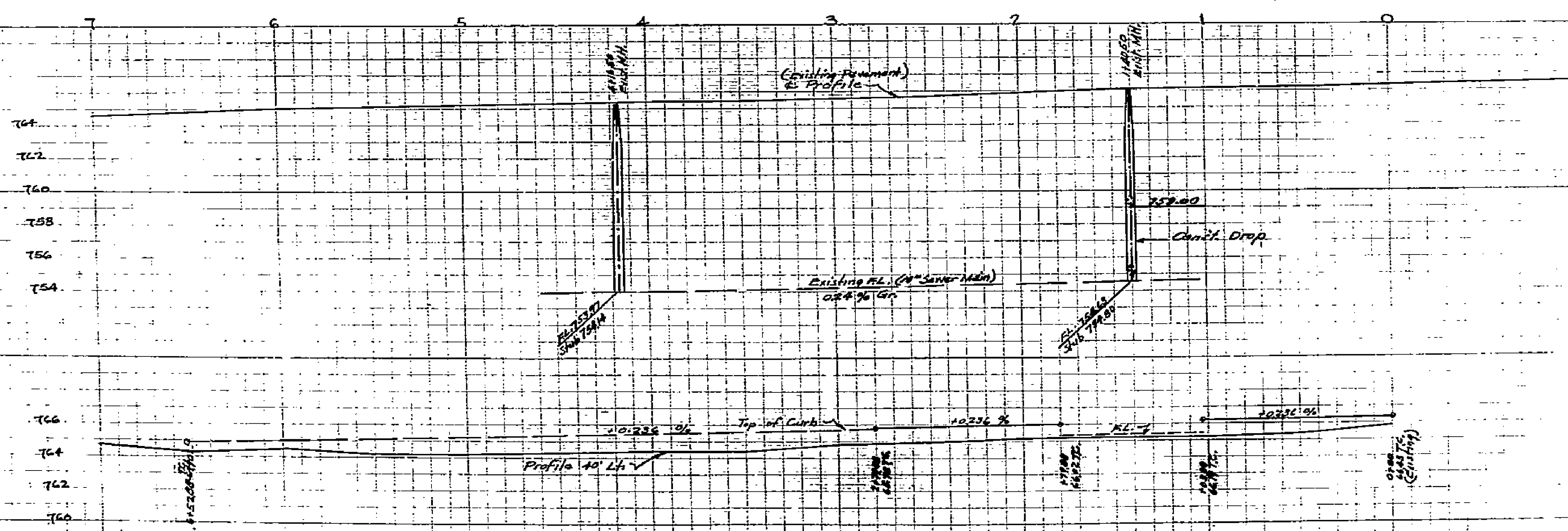
ADAMS

CALIFORNIA

AVENUE



TYPICAL STREET SECTION
California Avenue
MAP
Scale: 1"=40'



CALIFORNIA MANOR
PLOT PLAN & PROFILES
Feb. 1954 Scale: Horiz 1"=40'
Vert. 1"=40'
Donald J. McKee, Jr., Surveyor

B.M.
Spk. & Id., S.W. Curb Ref. Calif. Av. & St. Paul St.
Elev. 765.28

Approved 3-9-1954
M.H. Irvine
M.H. Irvine, City Engineer, Riverside, Calif.

PROPERTY OF
CITY OF RIVERSIDE
CITY ENGINEERING DEPT.

PROPERTY OF
CITY OF RIVERSIDE
CITY ENGINEERING DEPT.

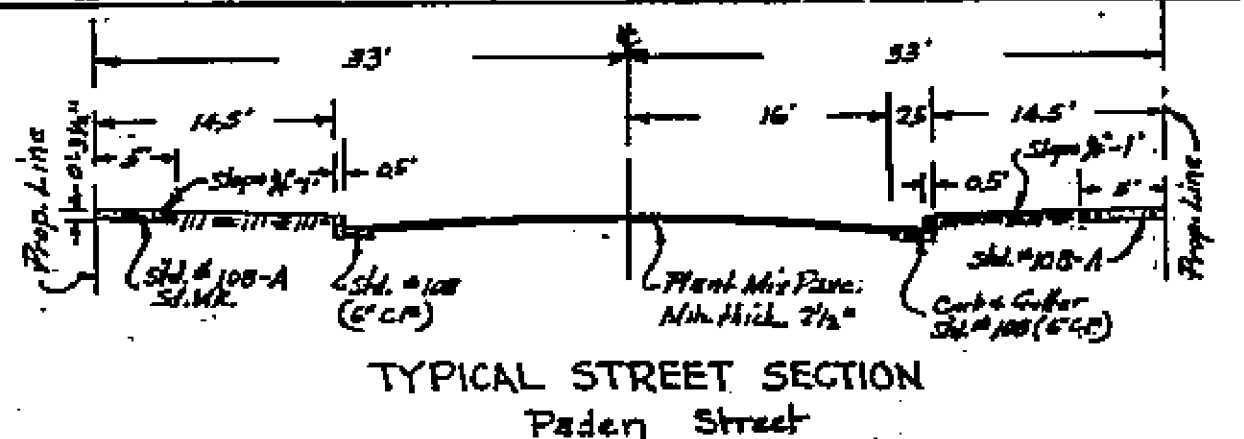
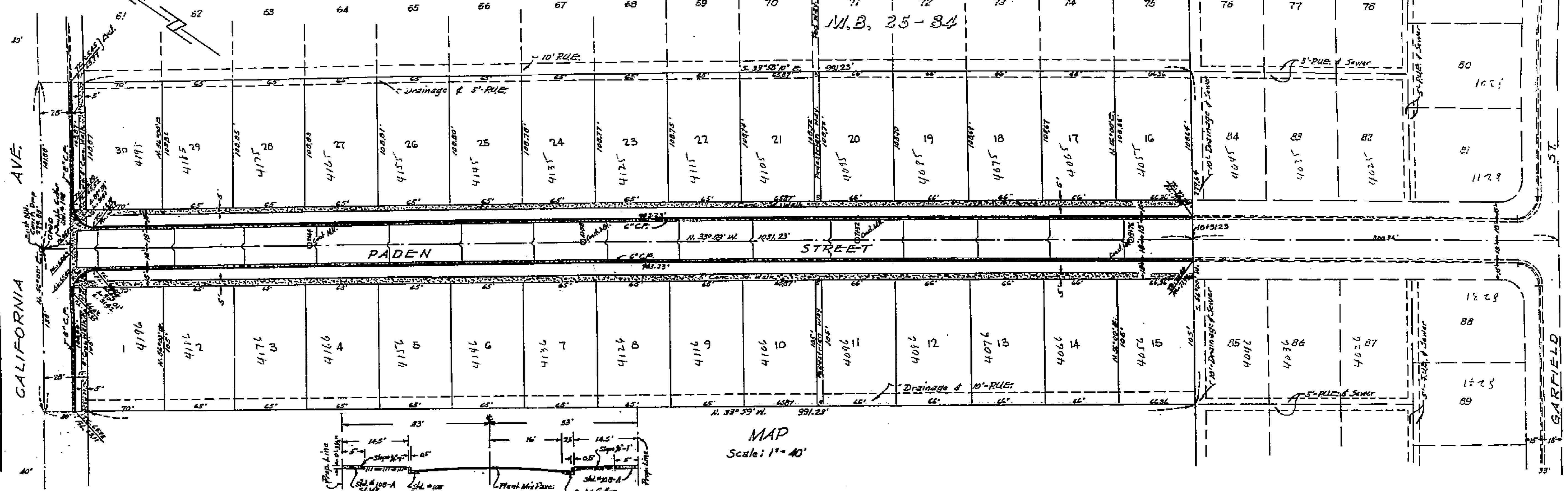
1433

PROPERTY OF
CITY OF RIVERSIDE
CITY ENGINEERS DEPT.

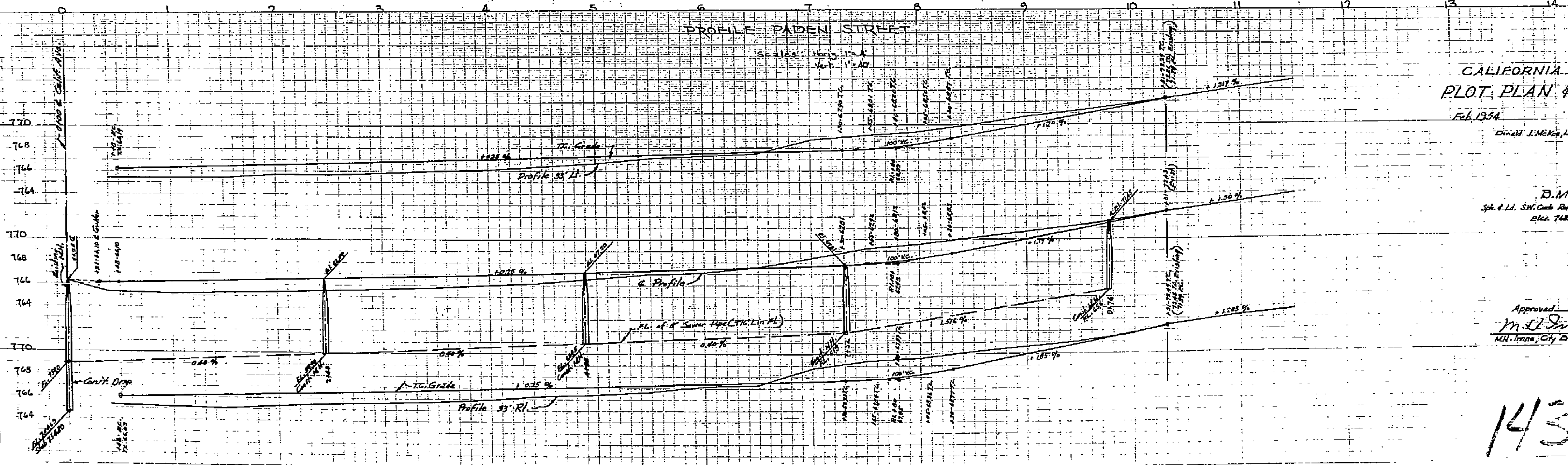
PROPERTY OF
CITY OF RIVERSIDE
CITY ENGINEERS DEPT.

ZAK RANCHO TRACT

M.B. 25-34



MAP
Scale: 1" = 40'



CALIFORNIA MANOR
PLOT PLAN & PROFILE
Feb. 1954
Scale: Horiz. 1" = 40', Vert. 1" = 40'
Donald J. McKee, Lic. Surveyor

D.M.
Sgt. & Lt. S.W. Cook, Rd. Calif. and S.P. & S. St.
Elev. 748.28

Approved: 3-9-54
M.L. Irvine
M.L. Irvine, City Engineer, Riverside, Calif.

1433

PROPERTY OF
CITY OF RIVERSIDE
CITY ENGINEERS DEPT.

PROPERTY OF
CITY OF RIVERSIDE
CITY ENGINEERS DEPT.