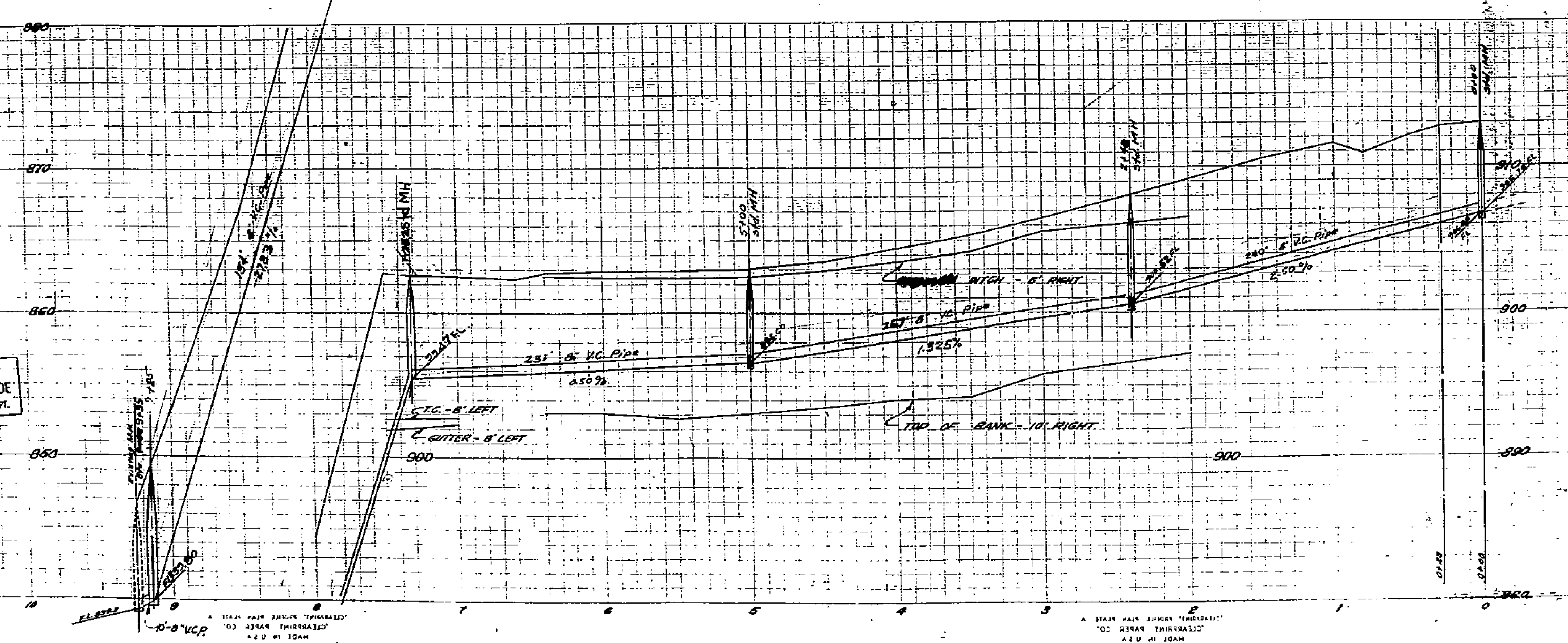
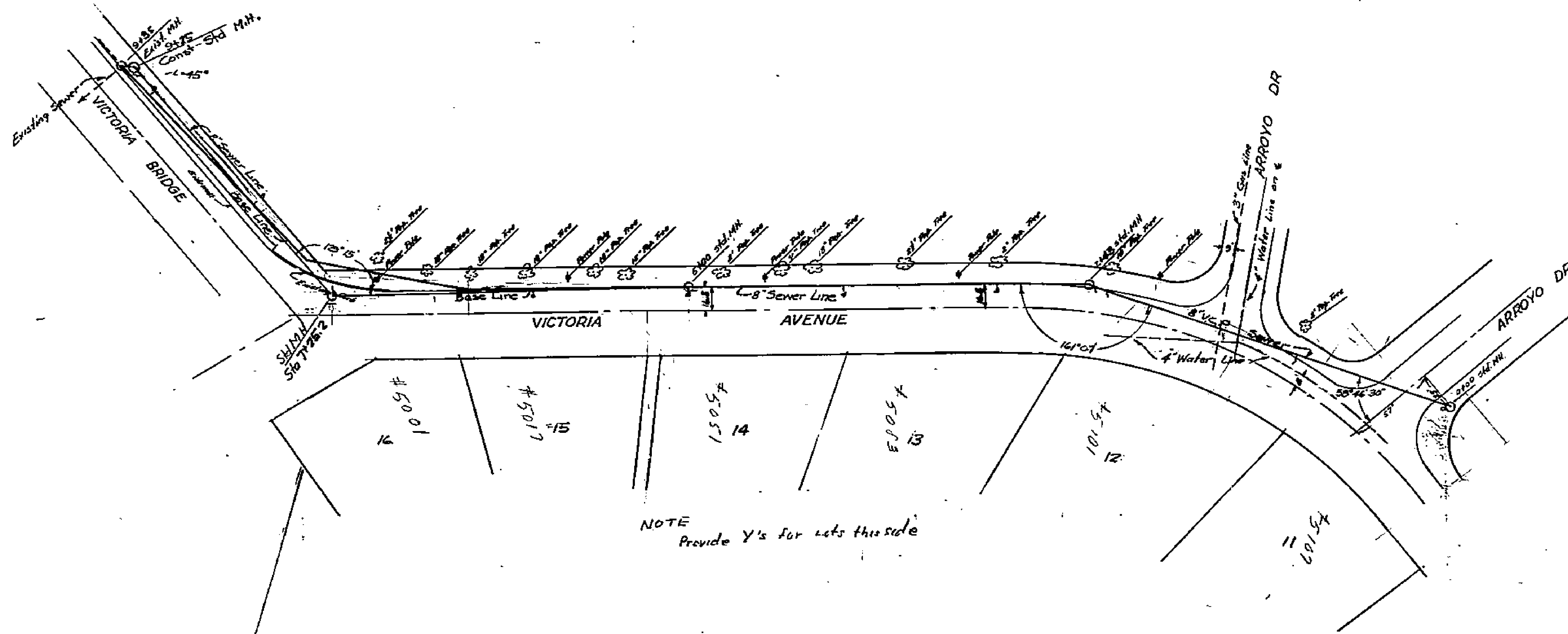


PROPERTY OF
CITY OF RIVERSIDE
CITY ENGINEERING DEPT.

PROPERTY OF
CITY OF RIVERSIDE
CITY ENGINEERING DEPT.



APPROVED *J.M. V. [Signature]*
CITY ENGINEER

PLAN & PROFILE
VICTORIA GROVES

February, 1953 J.F. DAVIDSON, C.E.

Scale: Hor. 1" = 40'
Vert. 1" = 5'

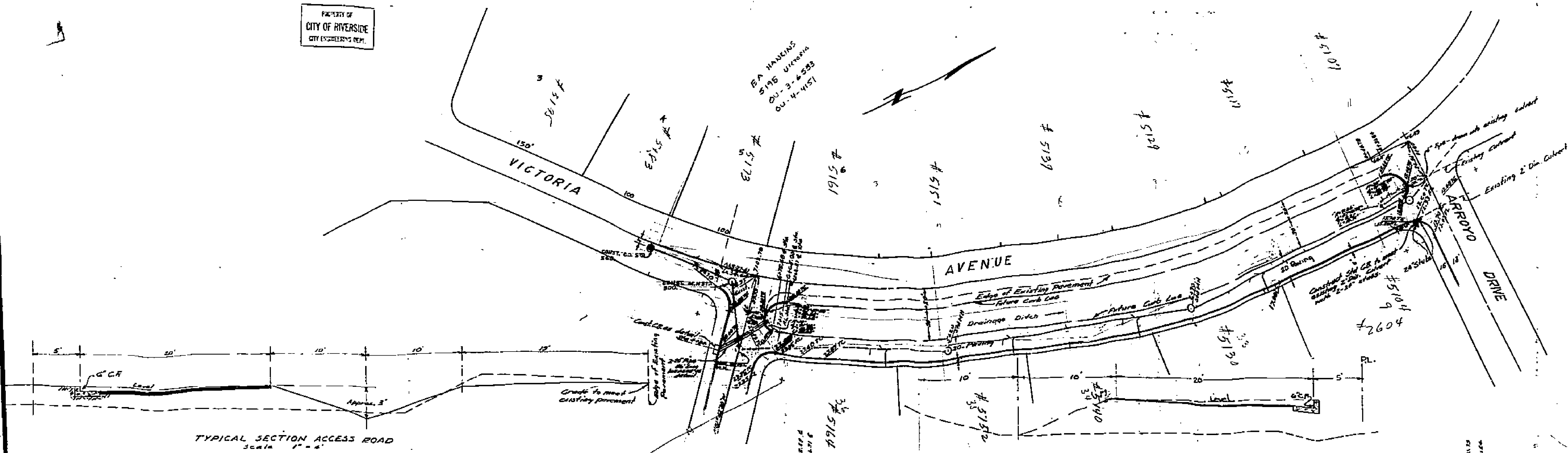
1434

PROPERTY OF
CITY OF RIVERSIDE
CITY ENGINEERING DEPT.

PROPERTY OF
CITY OF RIVERSIDE
CITY ENGINEERING DEPT.

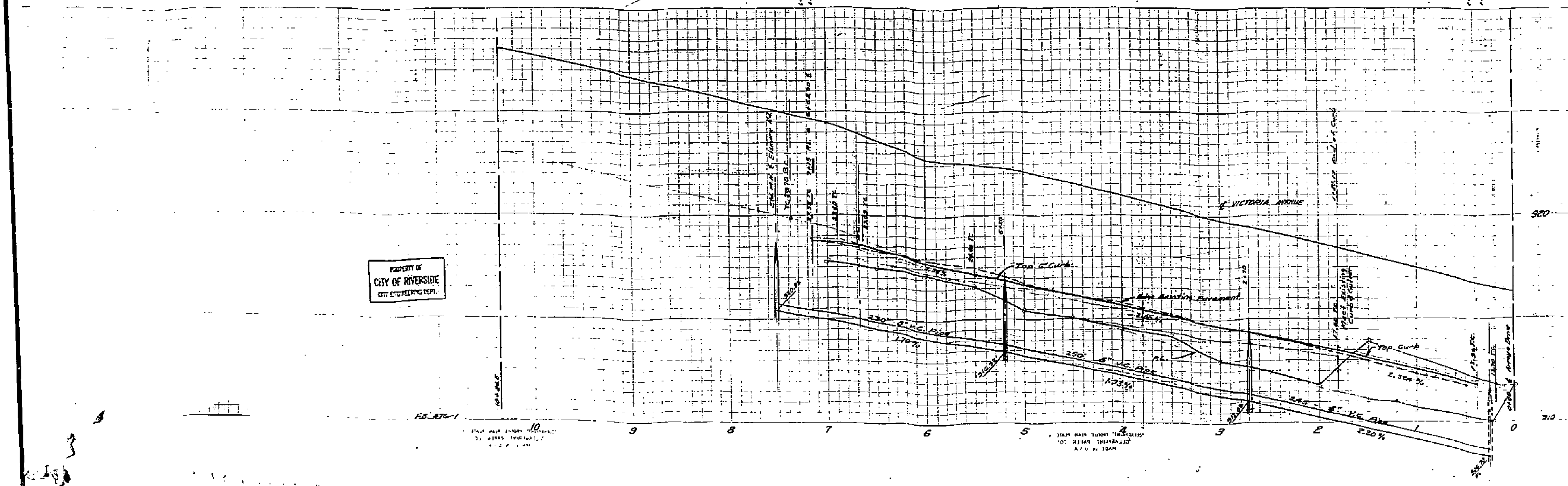
PROPERTY OF
CITY OF RIVERSIDE
CITY ENGINEER'S DEPT.

PROPERTY OF
CITY OF RIVERSIDE
CITY ENGINEER'S DEPT.



TYPICAL SECTION ACCESS ROAD
Scale 1" = 4'

SHEET 1 OF 5 SHEETS



PROPERTY OF
CITY OF RIVERSIDE
CITY ENGINEER'S DEPT.

PROPERTY OF
CITY OF RIVERSIDE
CITY ENGINEER'S DEPT.

D.M. - Lead Spike in West side of Victoria Avenue at South end. Elev. 303.05

Sta. 0+00 to 1+00.10
Approved: *M.W. Davis*
CITY ENGINEER

Approved: *M.W. Davis*
CITY ENGINEER

Contn. # 2 Expired

PLAN & PROFILE
VICTORIA GROVES
VICTORIA AVENUE

January 1953 J.F. DANLON, C.E.

Scale: Hor. 1" = 40'
Vert. 1" = 4'

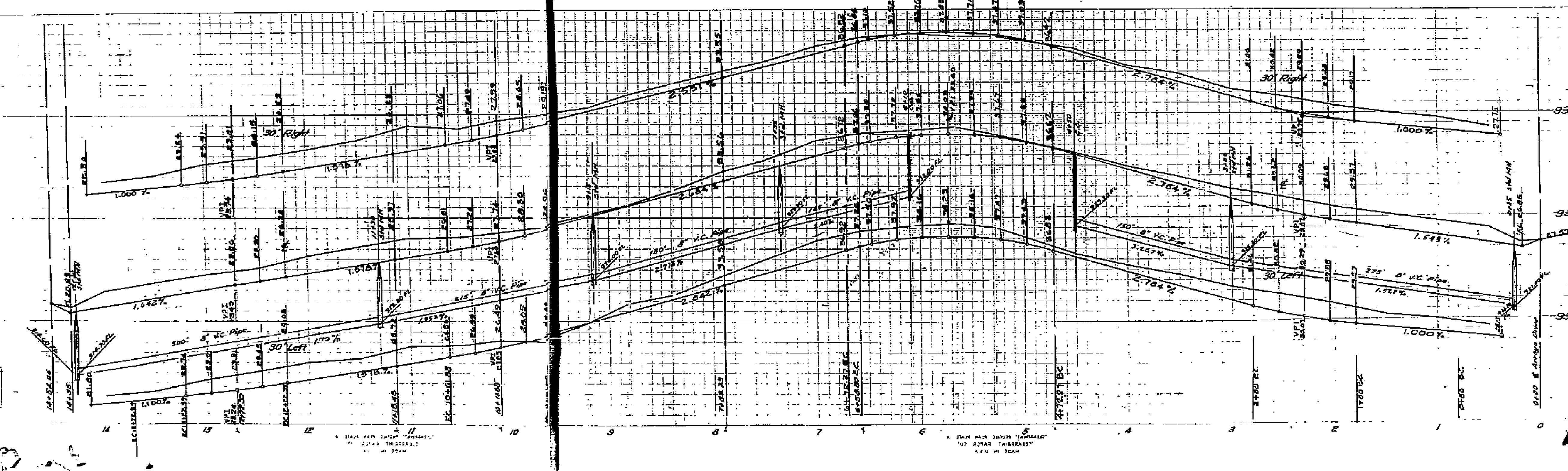
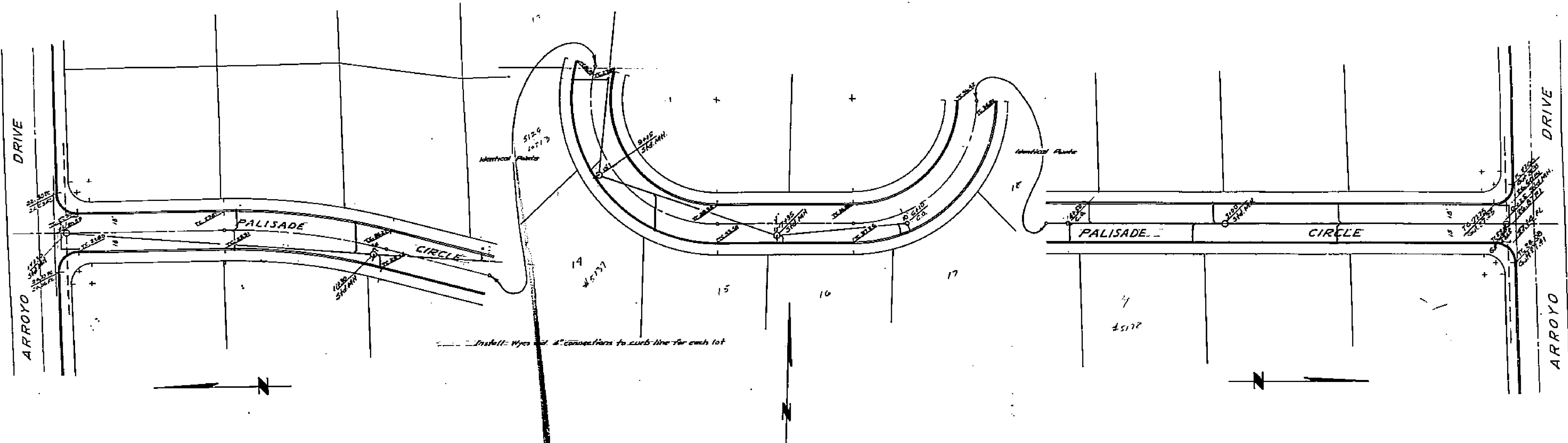
1434

FB 449-24
452

SHEET 1 OF 5

PROPERTY OF
CITY OF RIVERSIDE
ENGINEERING DEPT.

PROPERTY OF
CITY OF RIVERSIDE
ENGINEERING DEPT.



Approved *M. H. Swaine*
CITY ENGINEER.

PLAN & PROFILE
VICTORIA GROVES

January 1953 J. E. DAVIDSON, C.E.

SCALE: Hor. 1"=40'
Vert. 1"=4'

FB 449-70

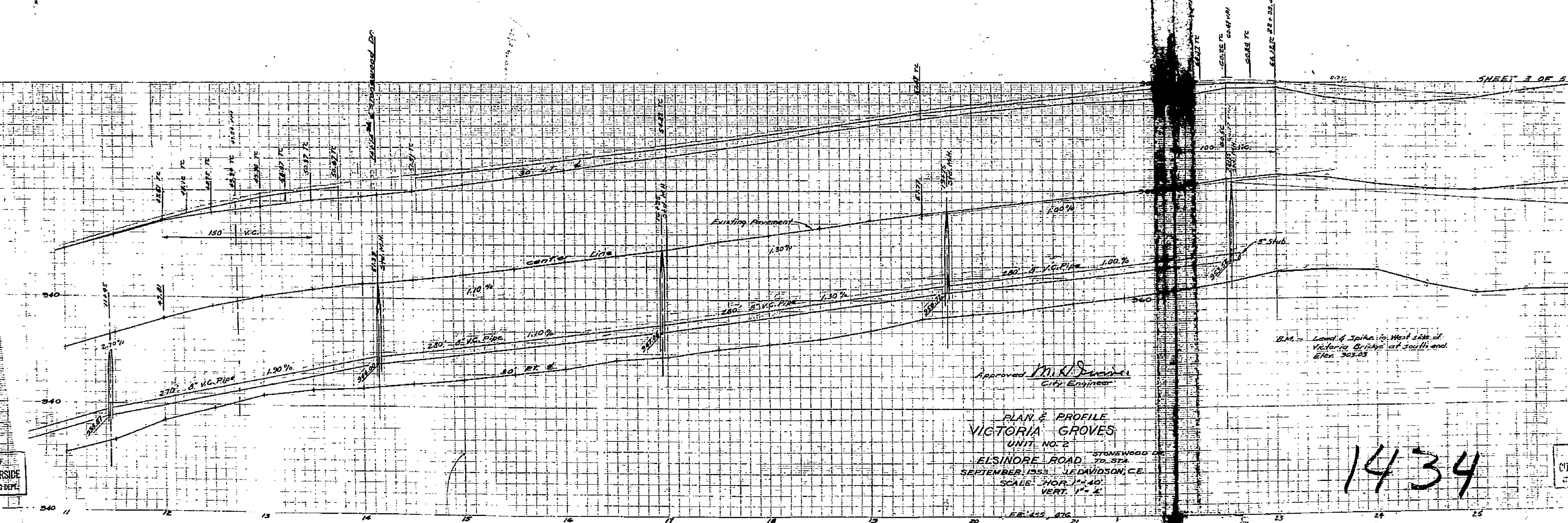
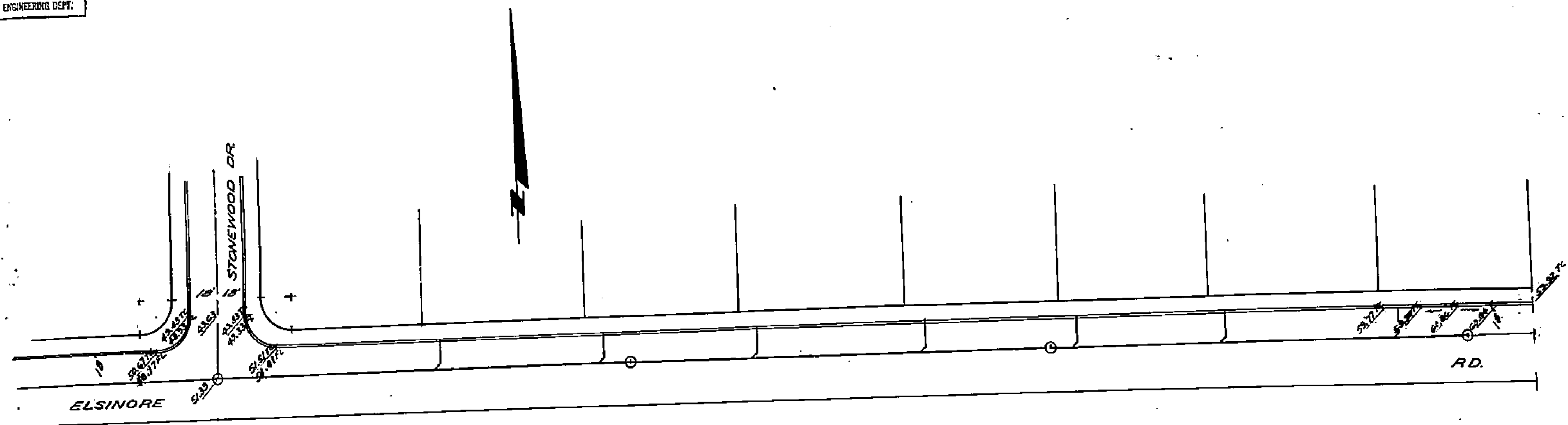
1434

PROPERTY OF
CITY OF RIVERSIDE
ENGINEERING DEPT.

PROPERTY OF
CITY OF RIVERSIDE
ENGINEERING DEPT.

PROPERTY OF
CITY OF RIVERSIDE
CITY ENGINEERING DEPT.

PROPERTY OF
CITY OF RIVERSIDE
CITY ENGINEERING DEPT.



SHEET 3 OF 5 SHEETS

Approved *M. K. Davidson*
City Engineer

PLAN & PROFILE
 VICTORIA GROVES
 UNIT NO. 2
 STONEWOOD DR.
 ELSINORE ROAD TO STA
 SEPTEMBER 1953 J. E. DAVIDSON, C.E.
 SCALE: HOR. 1" = 40'
 VERT. 1" = 4'

1434

PROPERTY OF
CITY OF RIVERSIDE
CITY ENGINEERING DEPT.

PROPERTY OF
CITY OF RIVERSIDE
CITY ENGINEERING DEPT.

MADE IN U.S.A.
 OFFICIAL PAPER CO.
 102 B344 THIRDS ST.
 SAN FRANCISCO, CALIF.

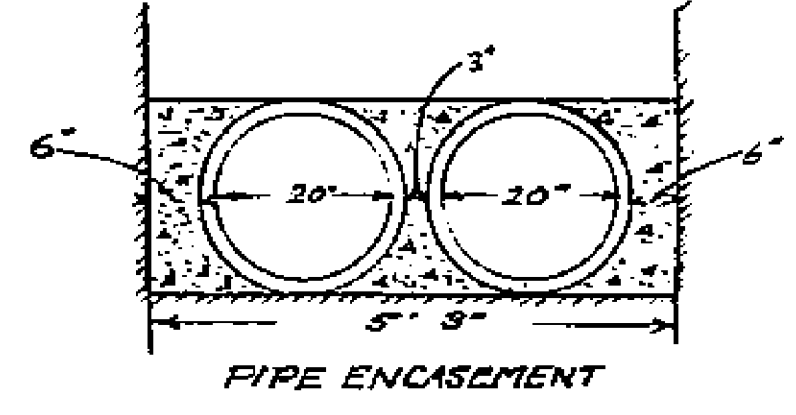
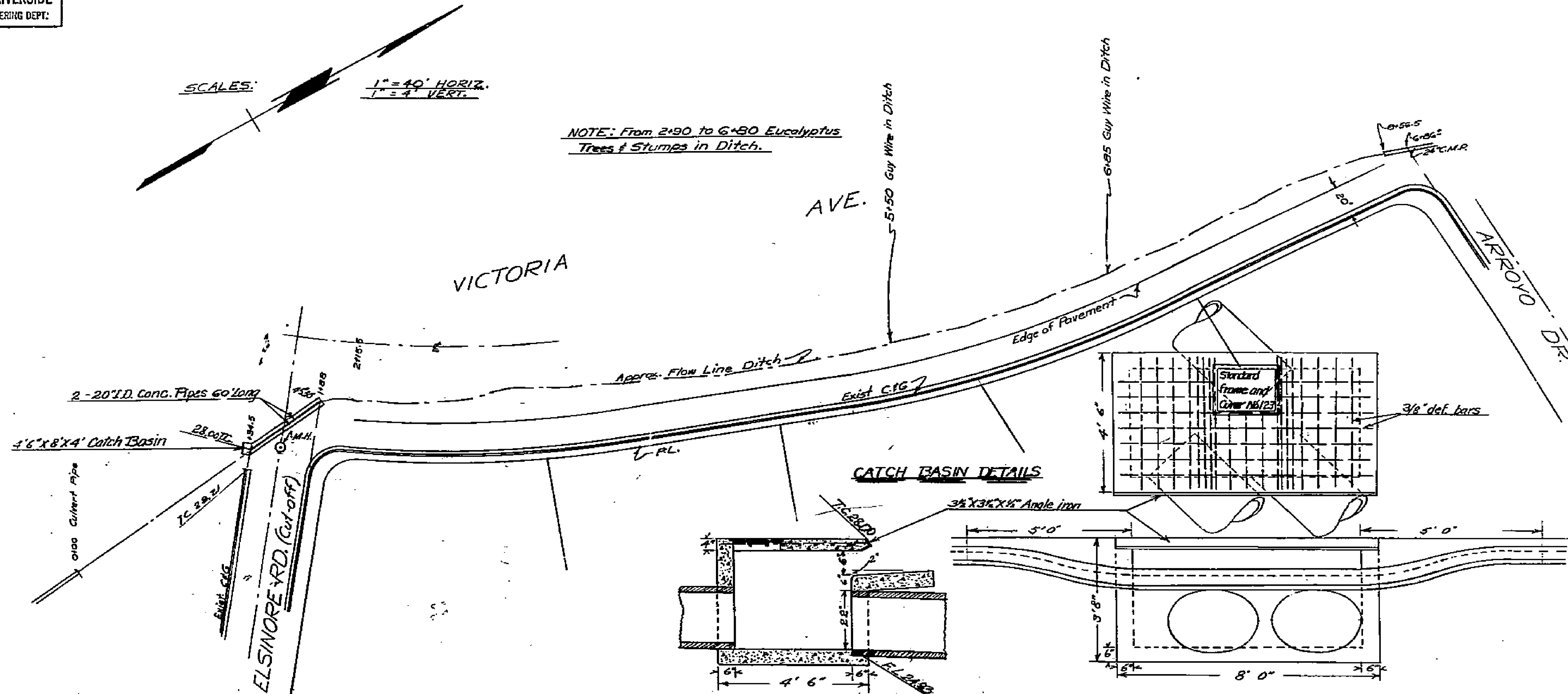
MADE IN U.S.A.
 OFFICIAL PAPER CO.
 102 B344 THIRDS ST.
 SAN FRANCISCO, CALIF.

SCALES:

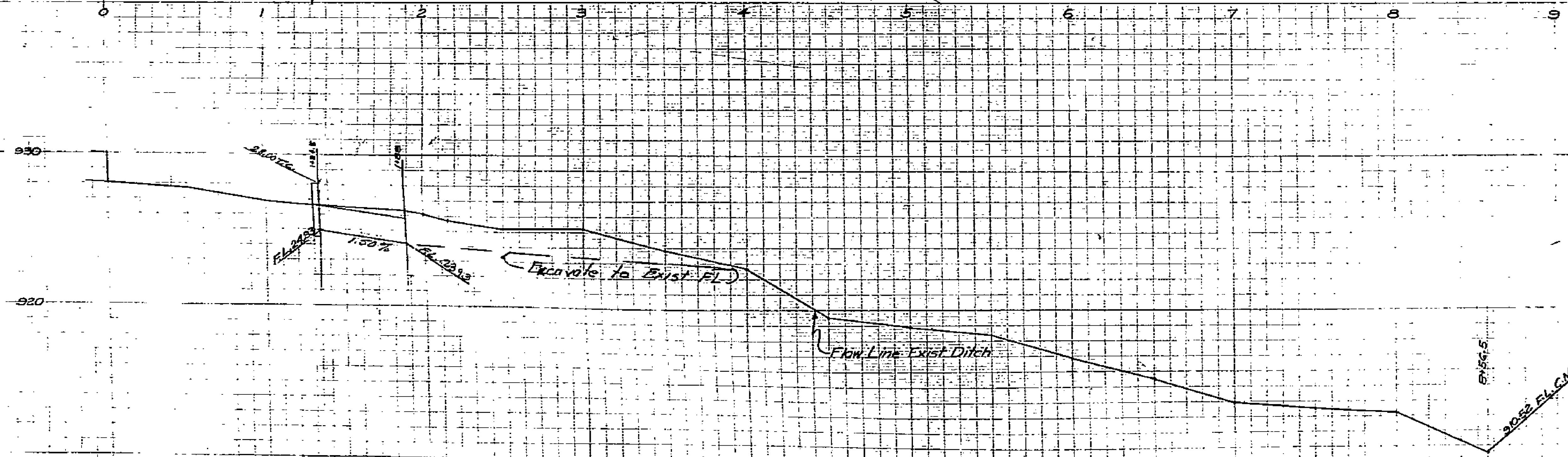
1" = 40' HORIZ.
1" = 4' VERT.

NOTE: From 2+90 to 6+50 Eucalyptus Trees & Stumps in Ditch.

SKETCH SHOWING APPROX. LOCATION OF DITCH IN VICTORIA AVENUE BETWEEN ELSINORE RD. & ARROYO DRIVE RIVERSIDE, CALIFORNIA

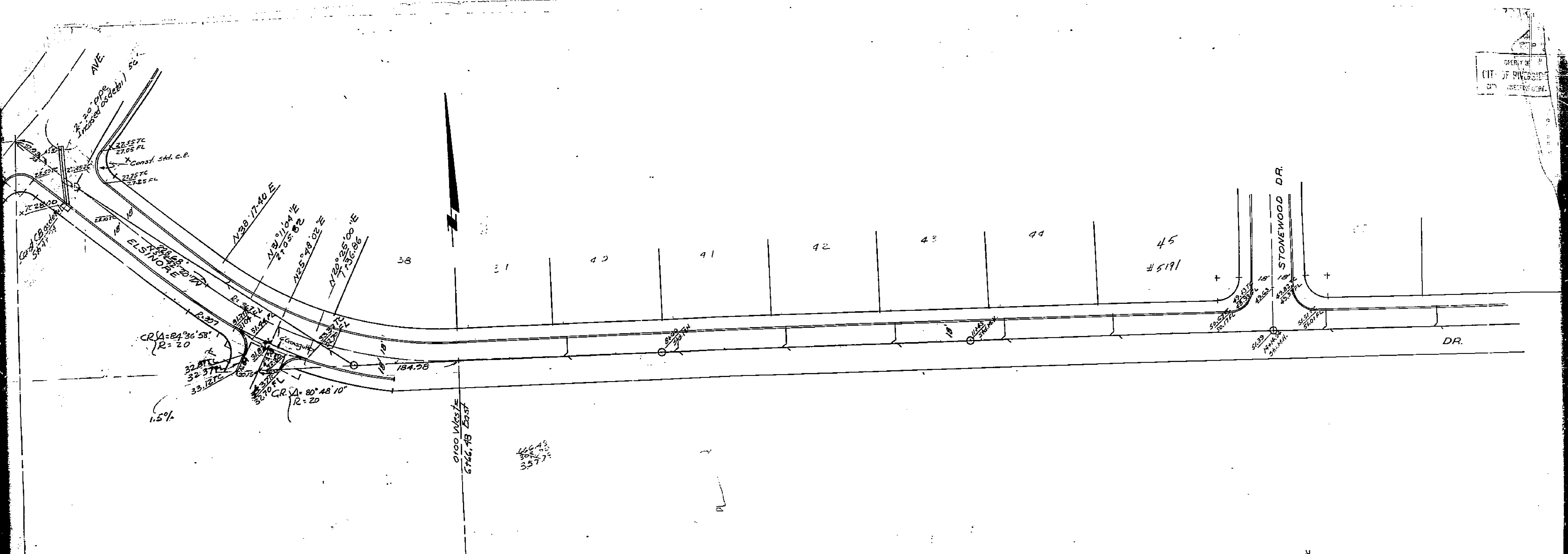


FB. 547/34

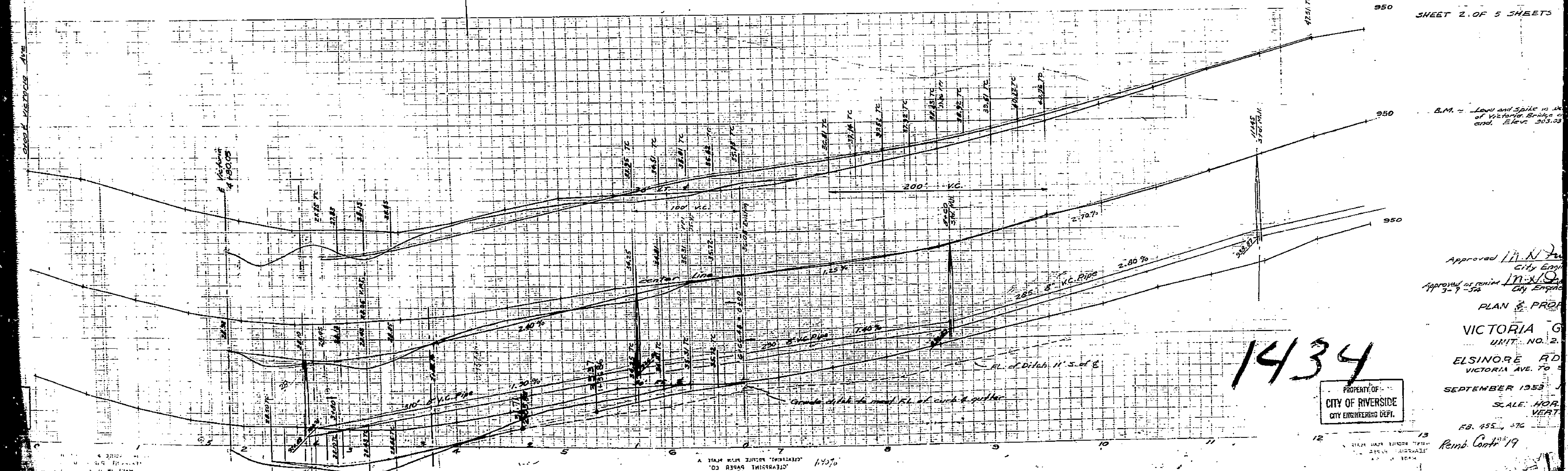


Approved: M. N. D... City Engineer

1434



SHEET 2 OF 5 SHEETS



B.M. = Low and Spill to the
of Victoria Bridge
and Elev. 955.03

Approved *M.N.P.*
City Engineer
Approved as revised *M.N.P.*
City Engineer

PLAN & PROFILE
VICTORIA G
UNIT NO. 2
ELSINORE RD
VICTORIA AVE. TO

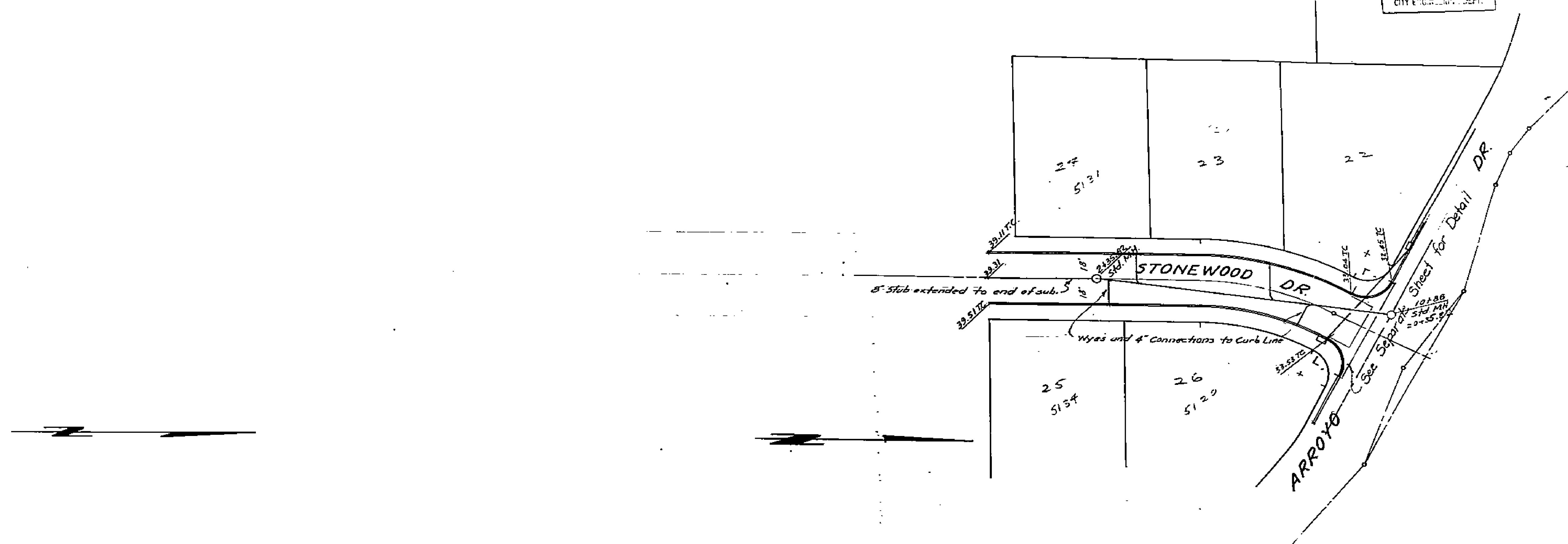
1434

PROPERTY OF
CITY OF RIVERSIDE
CITY ENGINEERING DEPT.

SEPTEMBER 1953
SCALE: HOR.
VERT.
R.B. 155, 576
Reimb. Contr 19

PROPERTY OF
CITY OF RIVERSIDE
CITY ENGINEERING DEPT.

PROPERTY OF
CITY OF RIVERSIDE
CITY ENGINEERING DEPT.



Approved *Mill*
City Engineer

PLAN & PROFILE
VICTORIA GROVES

January 1953 J.F. DAVIDSON,

Scale: Hor. 1"=40'
Vert. 1"=4'

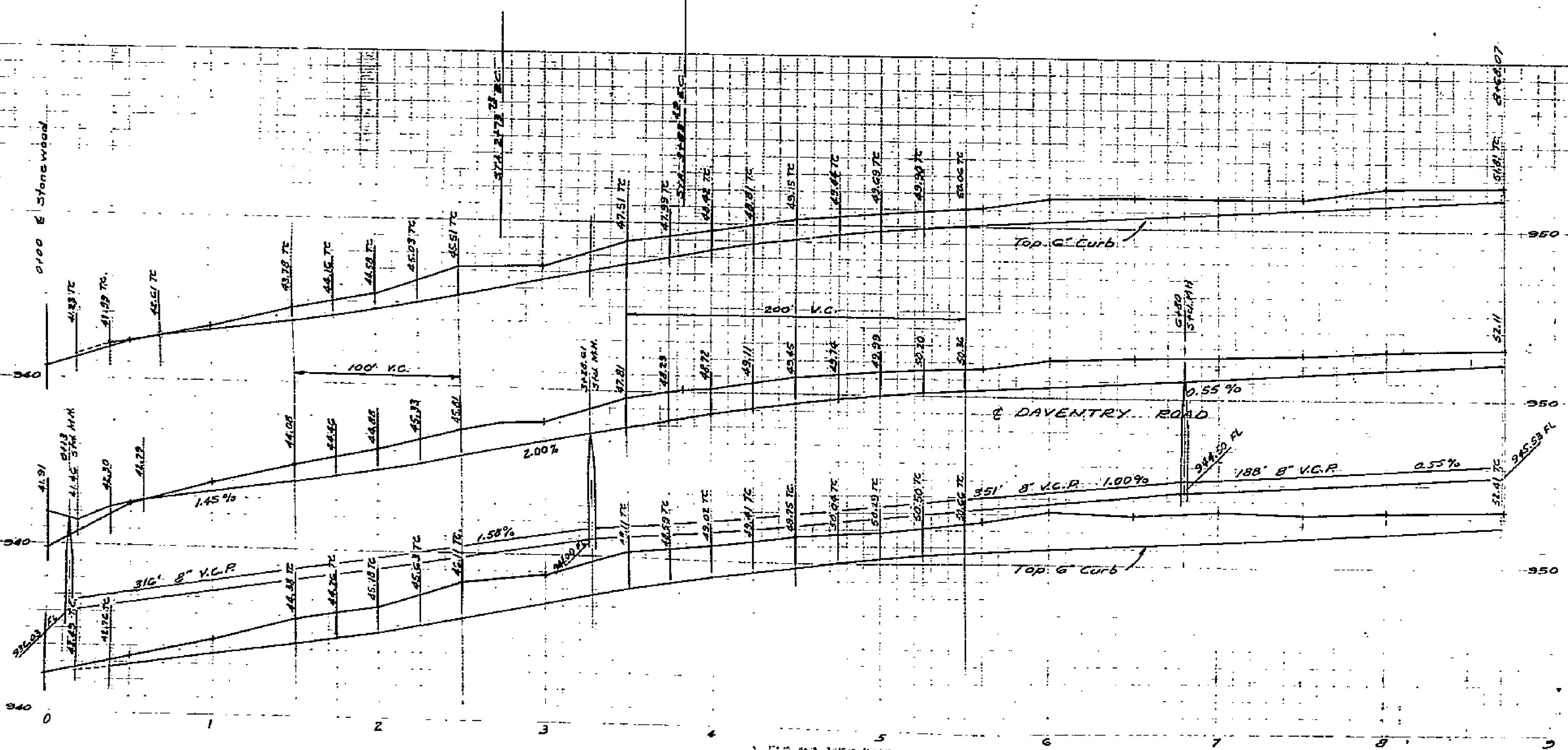
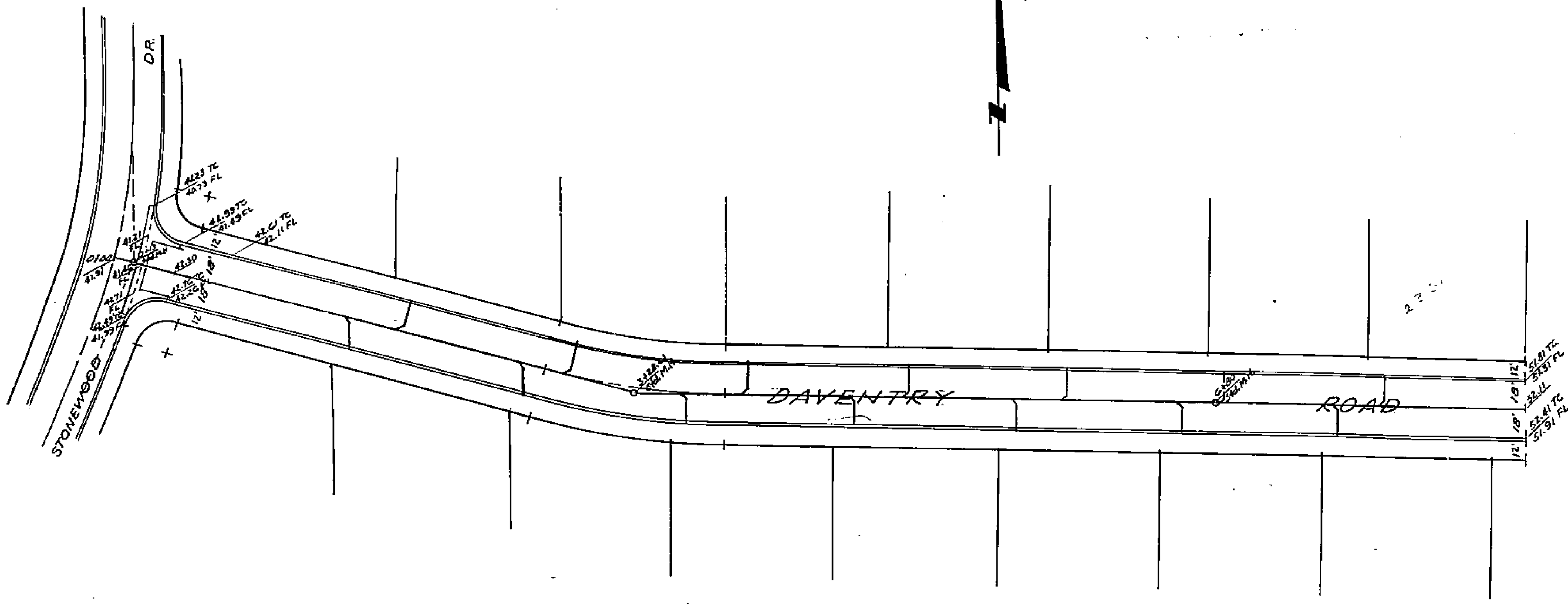
PROPERTY OF
CITY OF RIVERSIDE
CITY ENGINEERING DEPT.

PROPERTY OF
CITY OF RIVERSIDE
CITY ENGINEERING DEPT.

1434

PROPERTY OF
CITY OF RIVERSIDE
ENGINEERING DEPT.

PROPERTY OF
CITY OF RIVERSIDE
CITY ENGINEERING DEPT.



SHEET 5 OF 5 SHEETS

B.M. = Load & Spike in West side
of Victoria Bridge at
South end.
Elev. 303.03

Approved *M. K. Davine*
City Engineer

PLAN & PROFILE
VICTORIA GROVES
UNIT NO. 2
DAVENTRY ROAD

SEPTEMBER 1953 J.F. DAVIDSON,

SCALE: HOR. 1"=40'
VERT. 1"=4'

PROPERTY OF
CITY OF RIVERSIDE
CITY ENGINEERING DEPT.

1434

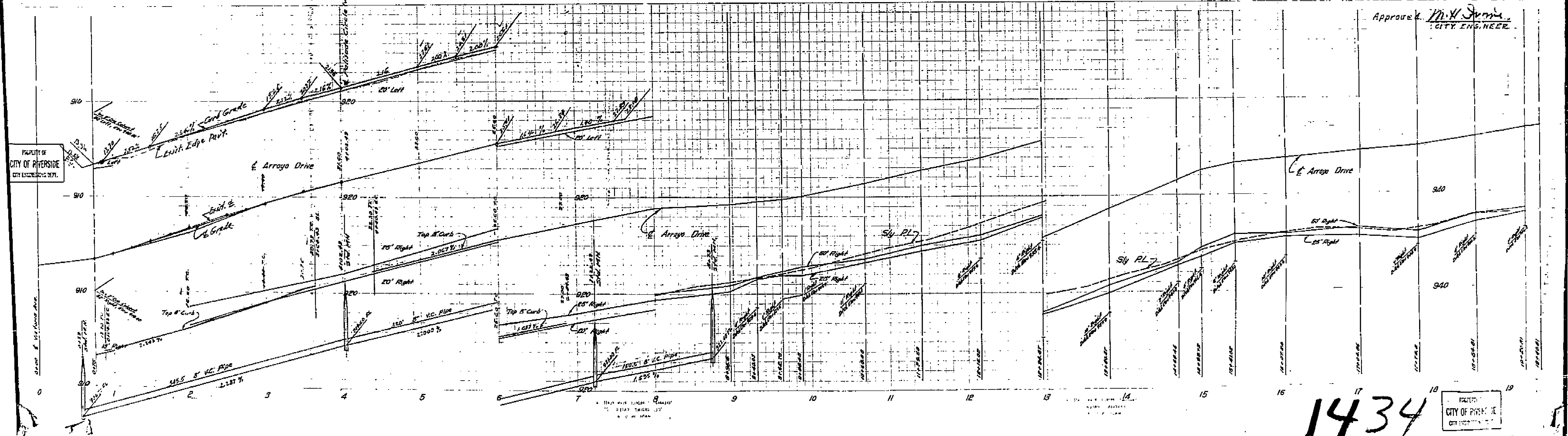
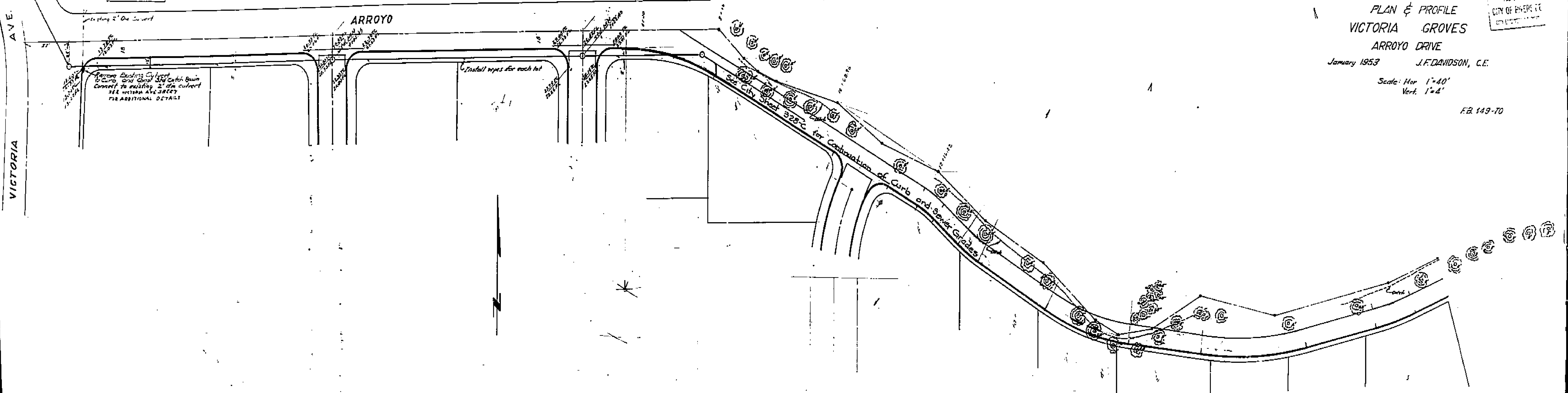
PROPERTY OF
CITY OF RIVERSIDE
ENGINEERING DEPT.

PROPERTY OF
CITY OF RIVERSIDE
CITY ENGINEERING DEPT.

PLAN & PROFILE
VICTORIA GROVES
ARROYO DRIVE
January 1953 J.F. DAVIDSON, C.E.

Scale: Hor. 1"=40'
Vert. 1"=4'

FB 149-70

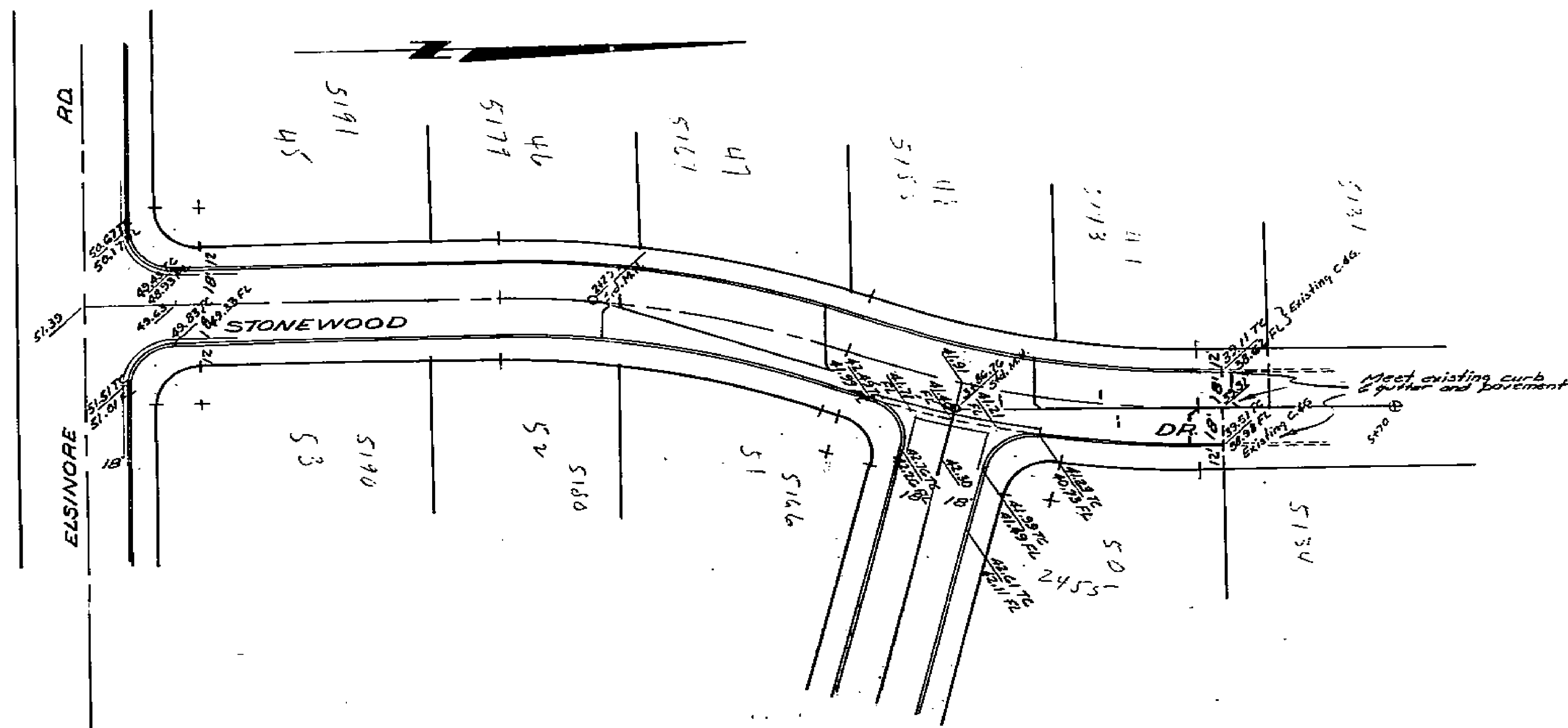


Approved: *M. K. J. [Signature]*
CITY ENGINEER

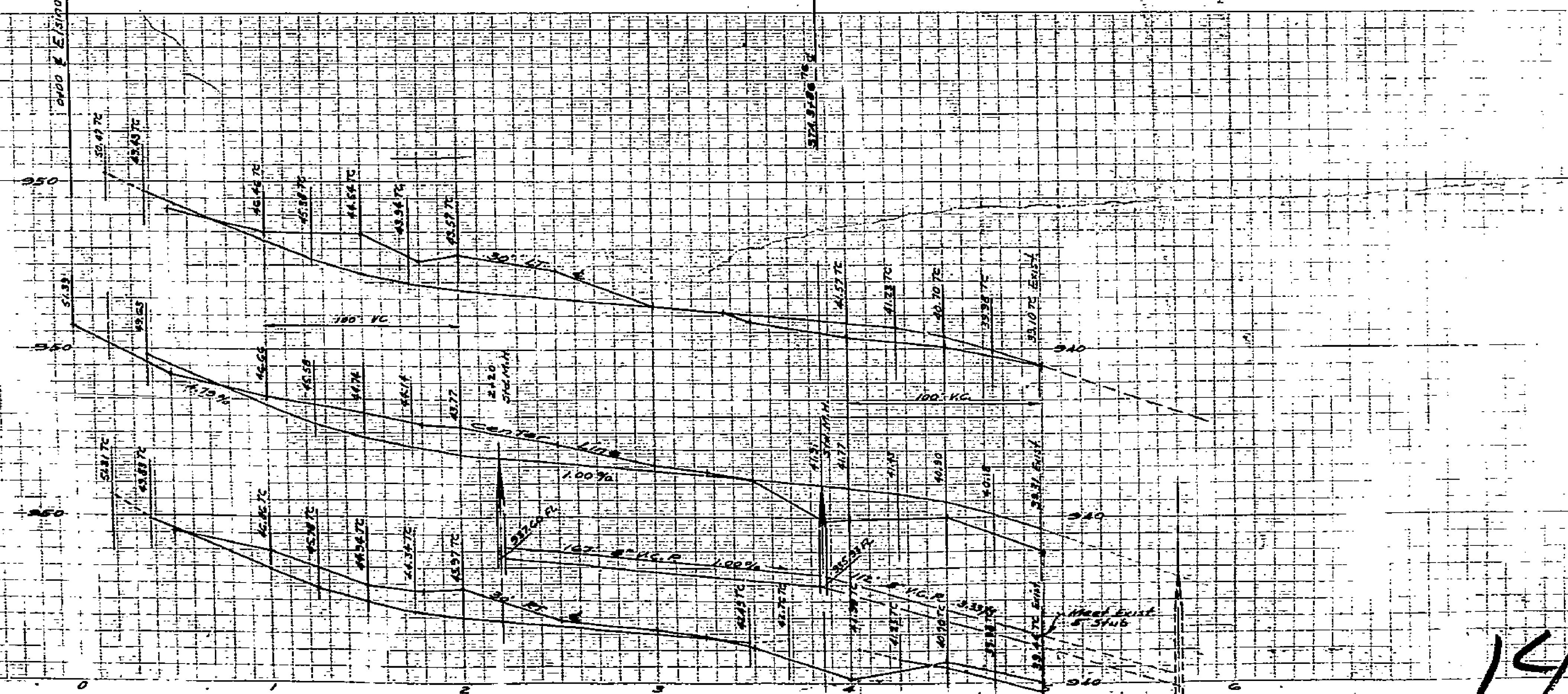
1434

PROPERTY OF
CITY OF RIVERSIDE
CITY ENGINEERING DEPT.

PROPERTY OF
CITY OF RIVERSIDE
CITY ENGINEERING DEPT.



SHEET 4 OF 5 SHEETS



B.M. = Lead of Spike on West side of Victoria Bridge at South end. Elev. 903.03

Approved: *M. H. Davidson*
City Engineer

PLAN & PROFILE
VICTORIA GROVES
UNIT NO. 2

STONEWOOD DRIVE
SEPTEMBER 1953 J.F. DAVIDSON, C.E.

SCALE: HOR. 1" = 40'
VERT. 1" = 4'

1434

PROPERTY OF
CITY OF RIVERSIDE
ENGINEERING DEPT.

A 3/16" DIA. SECTION "STANDARD"
OF "HEAT TREATING"
STEEL IS USED

PRINTED AND PUBLISHED BY
CLAREMONT PAPER CO.
MADE IN U.S.A.