

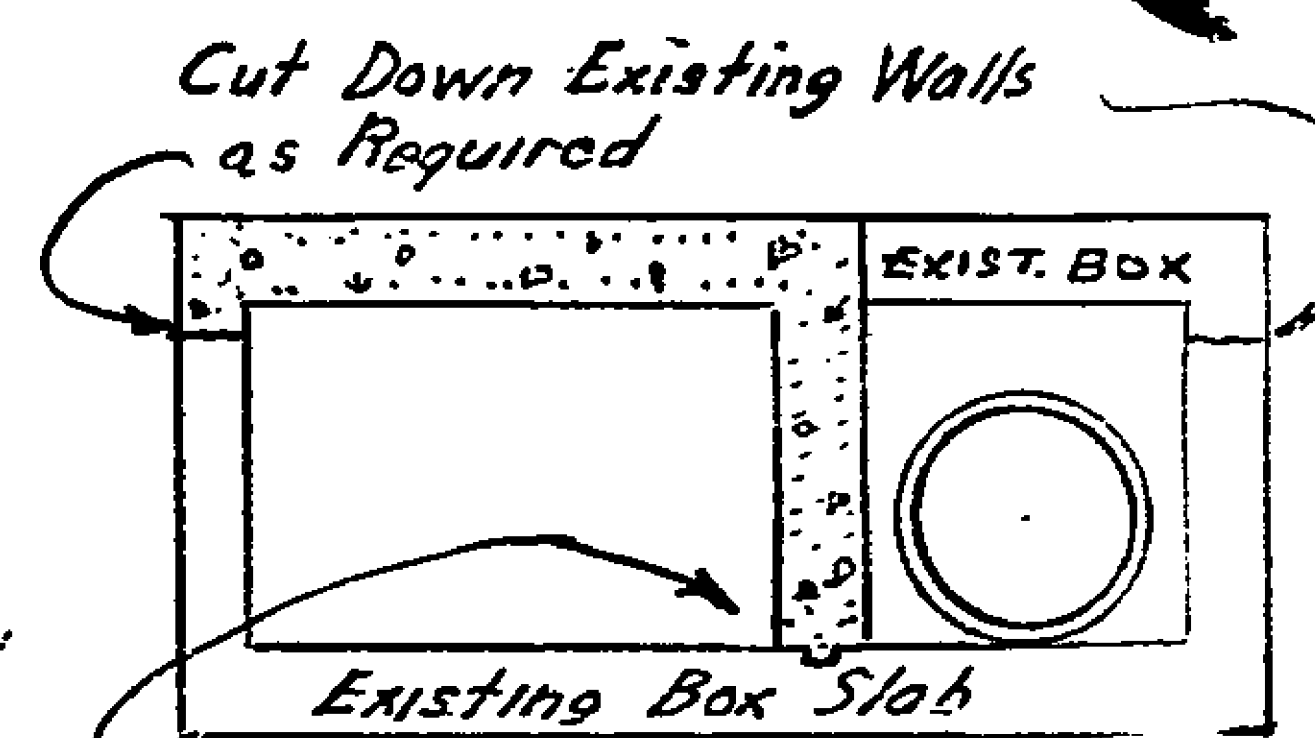
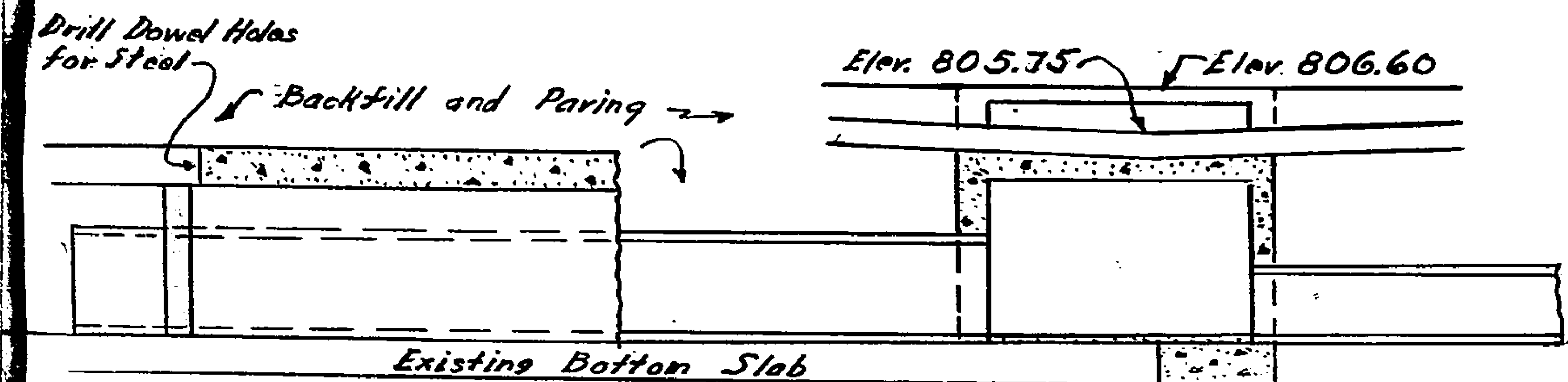
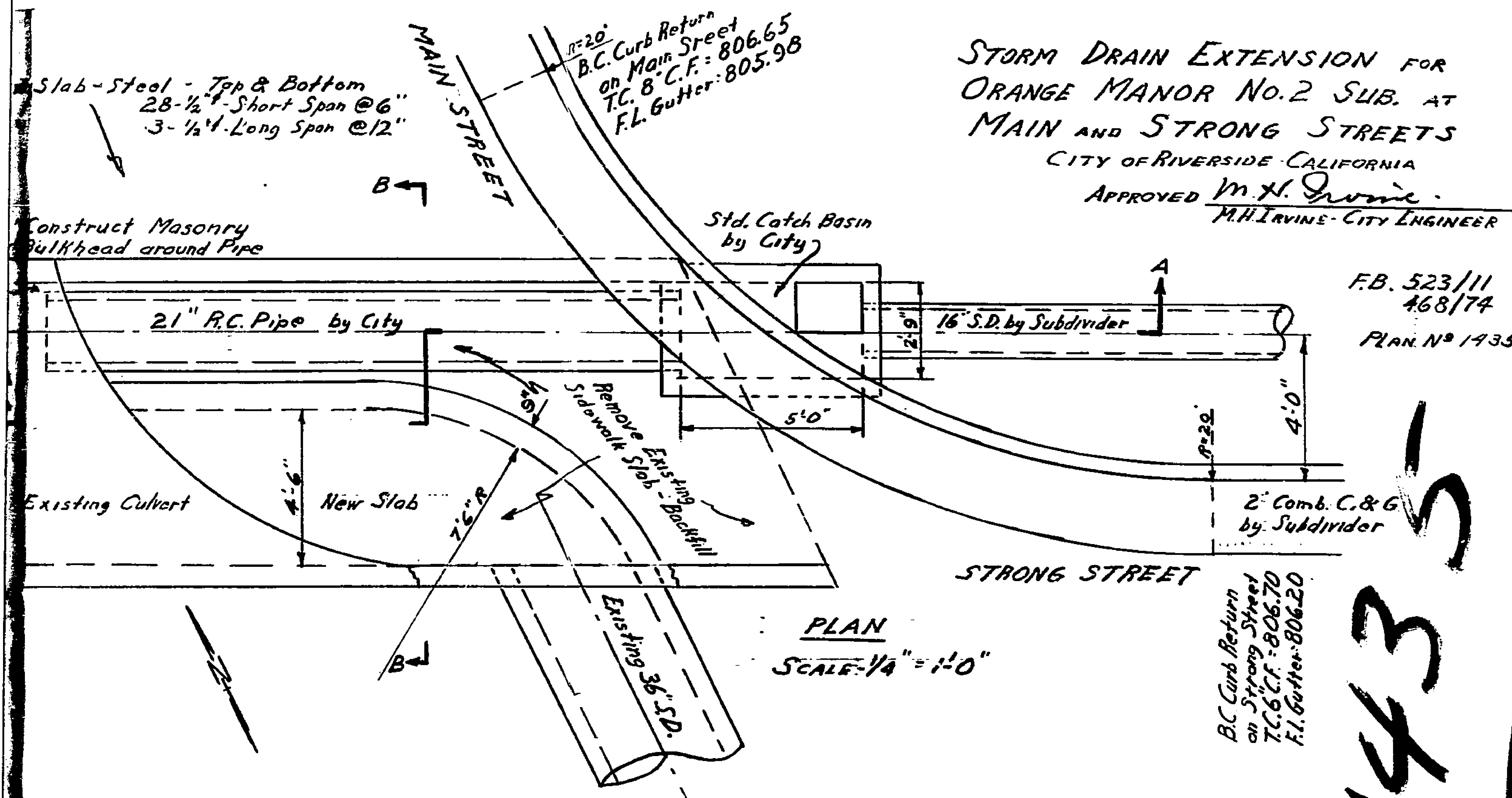
STORM DRAIN EXTENSION FOR  
ORANGE MANOR NO. 2 SUB. AT  
MAIN AND STRONG STREETS

CITY OF RIVERSIDE - CALIFORNIA

APPROVED *M.H. Irvine*  
M.H. IRVINE - CITY ENGINEER

F.B. 523/11  
468/74

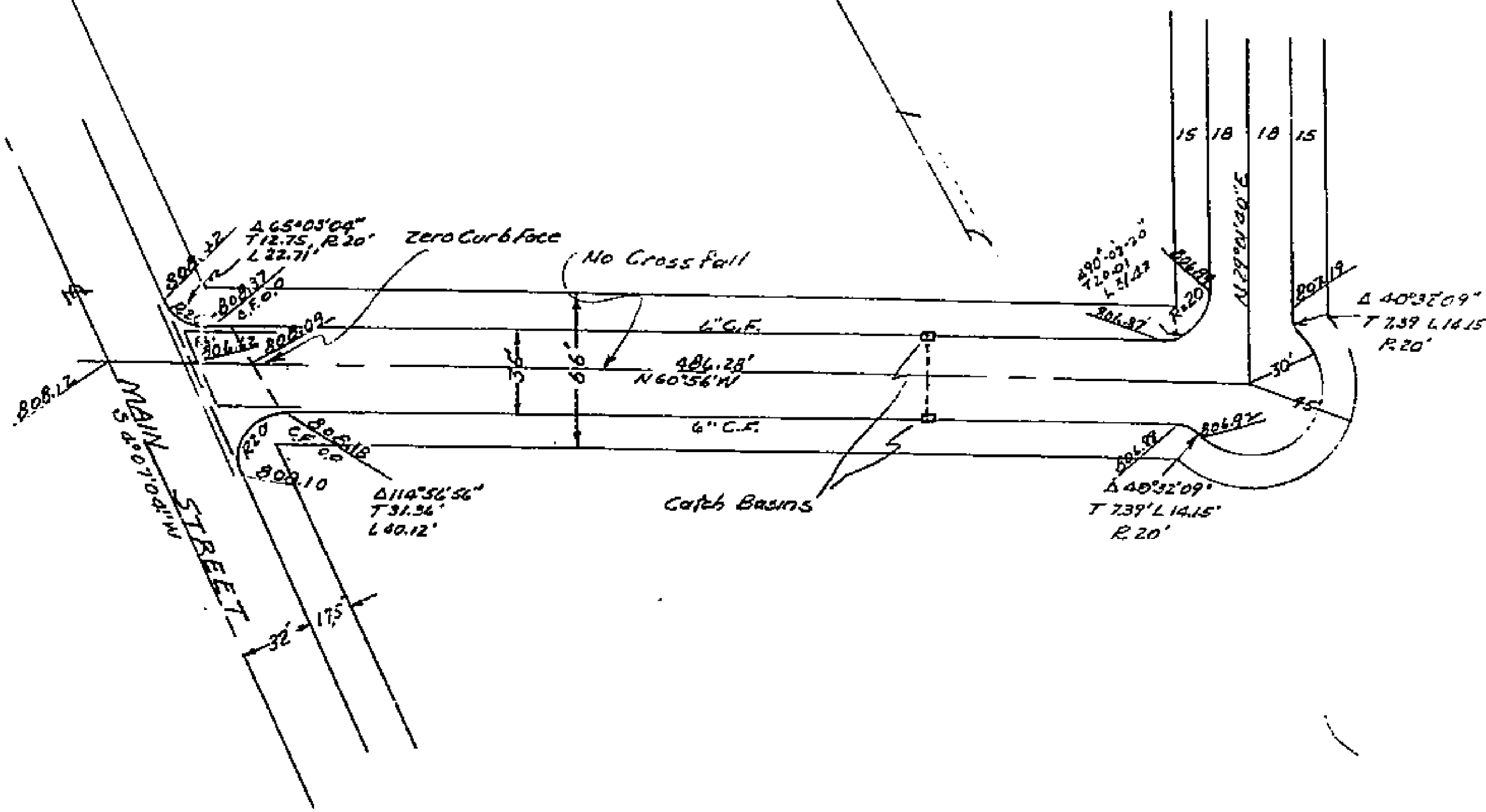
PLAN NO 1435



Cut Keyway Wall Steel  
1/2" @ 12" - B.W.-B.F.

1435

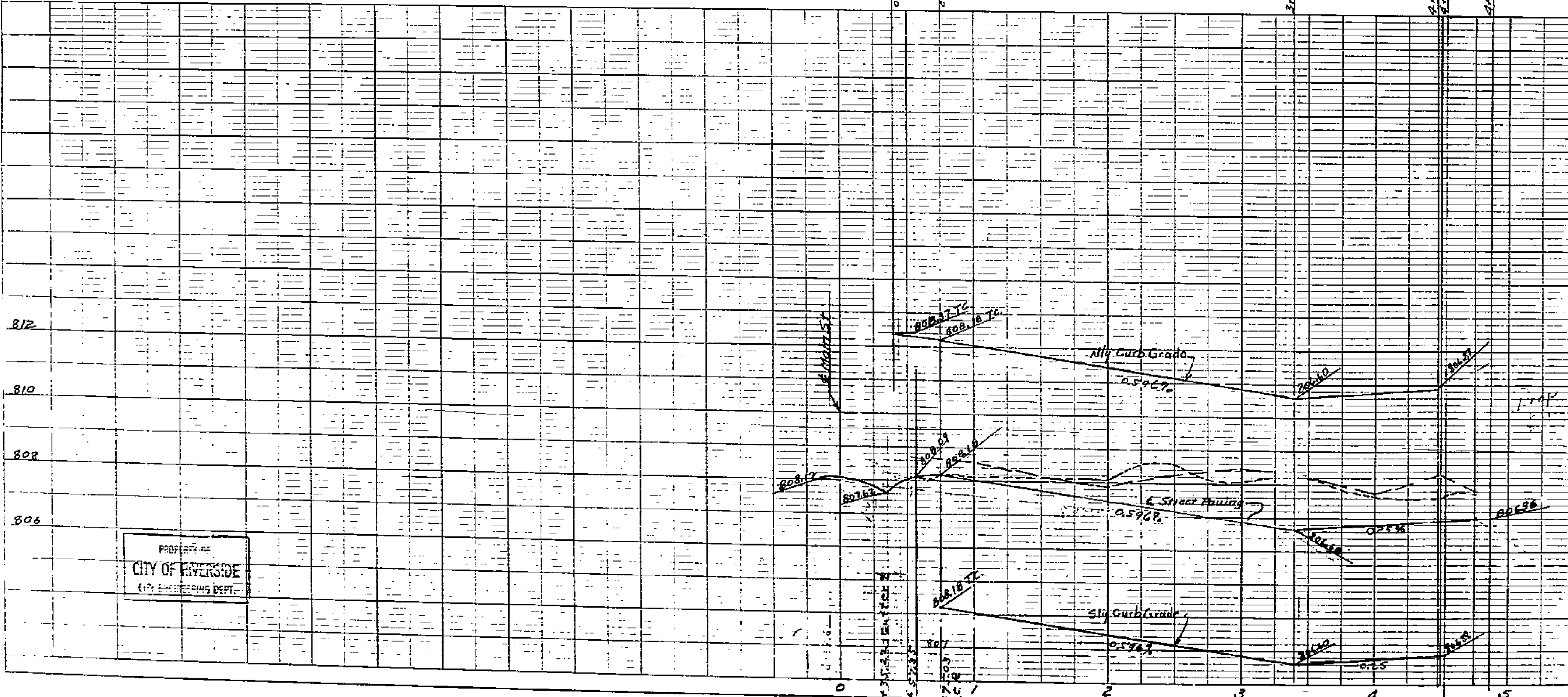
PROPERTY OF  
CITY OF RIVERSIDE  
CITY ENGINEERING DEPT.



RIVERSIDE ENGINEERING CO.  
RIVERSIDE, CALIFORNIA  
FOR ORANGE MANOR No. 2  
DRAWN BY SC CHECKED BY SC SCALE 1"=40'  
DATE 6-24-57 REVISED 7-7-57  
L. J. D. [Signature] CIVIL ENGINEER #1125  
JOB NO. 1435 SHEET 2 OF 3

Approved by [Signature]  
Date Dec 30 1953  
City Engineer

Note: Sidewalks to be 0.50' outside of Property Line.

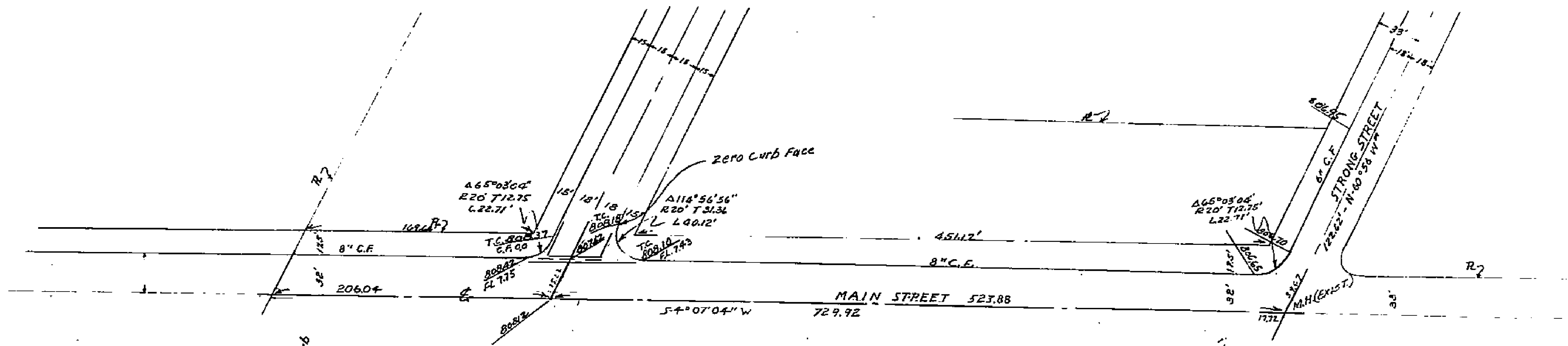
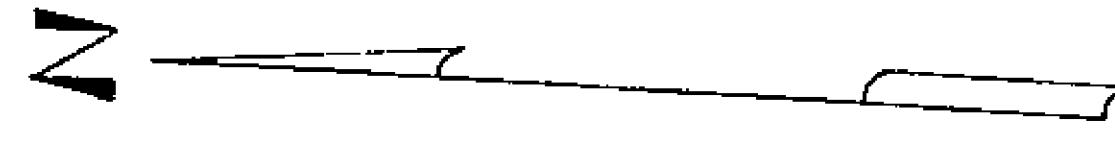


PROPERTY OF  
CITY OF RIVERSIDE  
CITY ENGINEERING DEPT.

PROPERTY OF  
CITY OF RIVERSIDE  
CITY ENGINEERING DEPT.

1435

PROPERTY OF  
CITY OF RIVERSIDE  
CITY ENGINEERING DEPT.

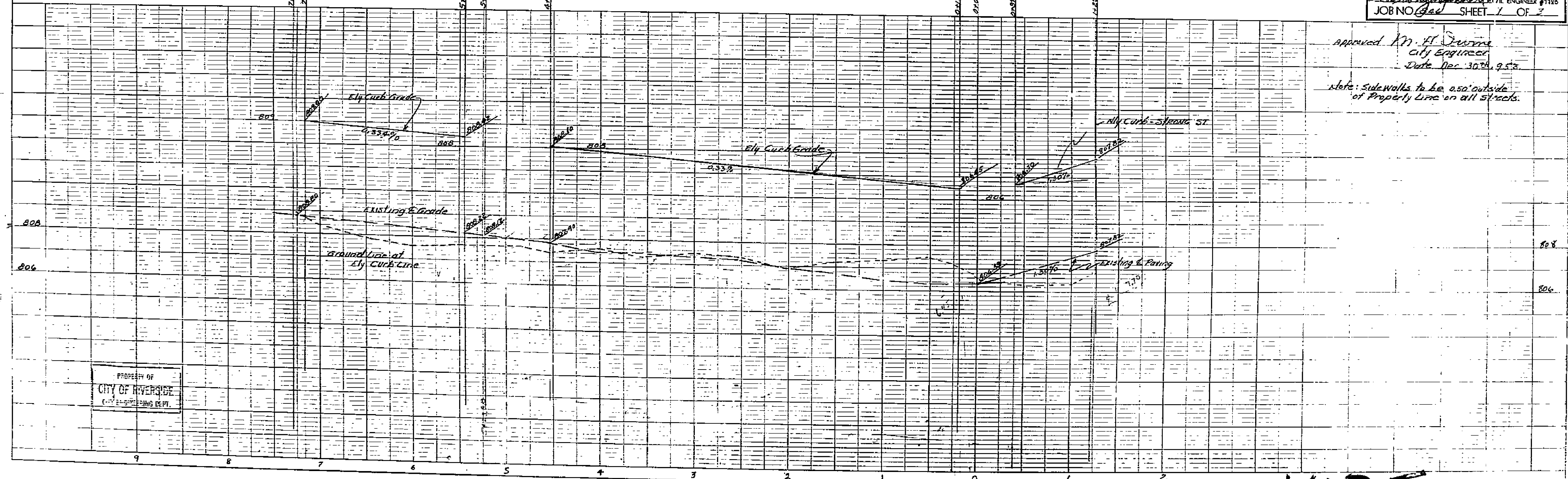


Main St & Strong St.  
E.M. Spike & Lead N.E. Curb Rst. E1, 806.605

RIVERSIDE ENGINEERING CO.  
RIVERSIDE, CALIFORNIA  
FOR ORANGE MANOR NO. 2  
Plan & Profile of Streets  
DRAWN BY W.C. CHECKED BY SCALE 1\"/>

Approved M. H. Jerome  
City Engineer  
Date Dec. 30th, 1953

note: Sidewalks to be 0.50' outside  
of Property Line on all streets.

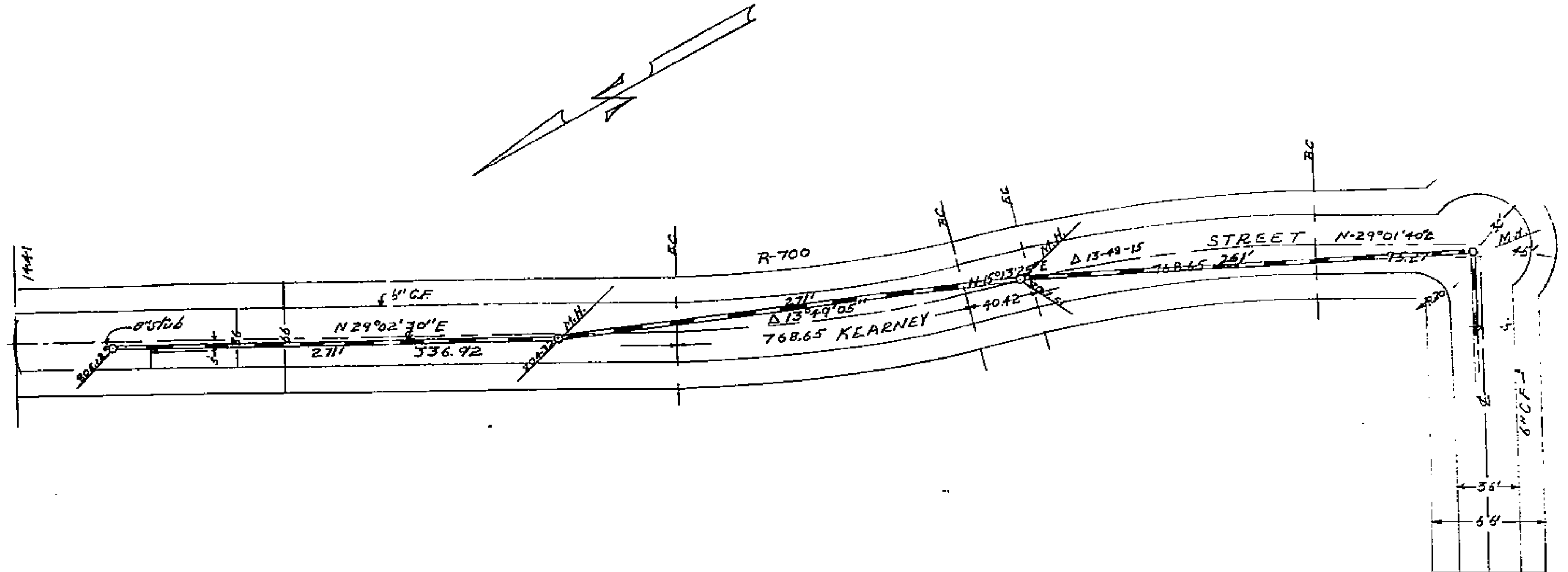


PROPERTY OF  
CITY OF RIVERSIDE  
CITY ENGINEERING DEPT.

1435

PROPERTY OF  
CITY OF RIVERSIDE  
CITY ENGINEERING DEPT.

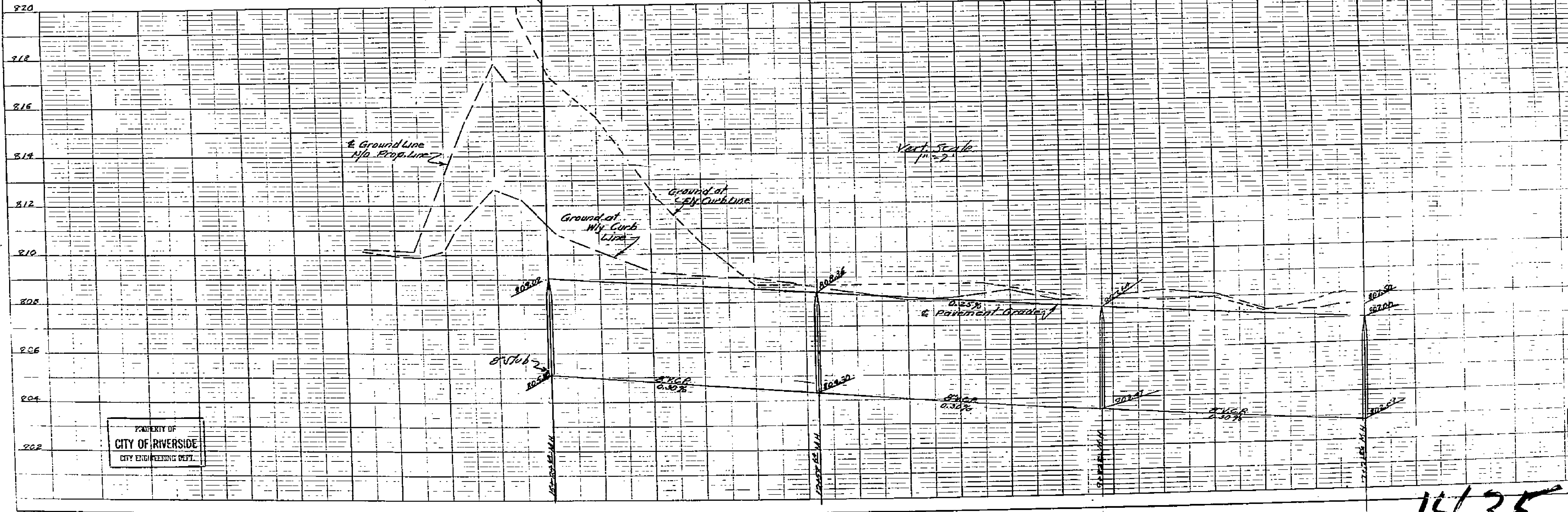
PROPERTY OF  
CITY OF RIVERSIDE  
CITY ENGINEERING DEPT.



PLAN

RIVERSIDE ENGINEERING  
RIVERSIDE, CALIFORNIA  
FOR ORANGE MANOR #2  
Plan & Profile of Sewer  
DRAWN BY EE CHECKED BY SS  
DATE 6/26/53 REVIS'D  
Edward J. Marshall CIVIL ENGINEER  
JOB NO. 226 SHEET 3 OF 3

Approved this 15 day of July 1953  
M. H. Duran  
City Engineer



PROFILE

PROPERTY OF  
CITY OF RIVERSIDE  
CITY ENGINEERING DEPT.

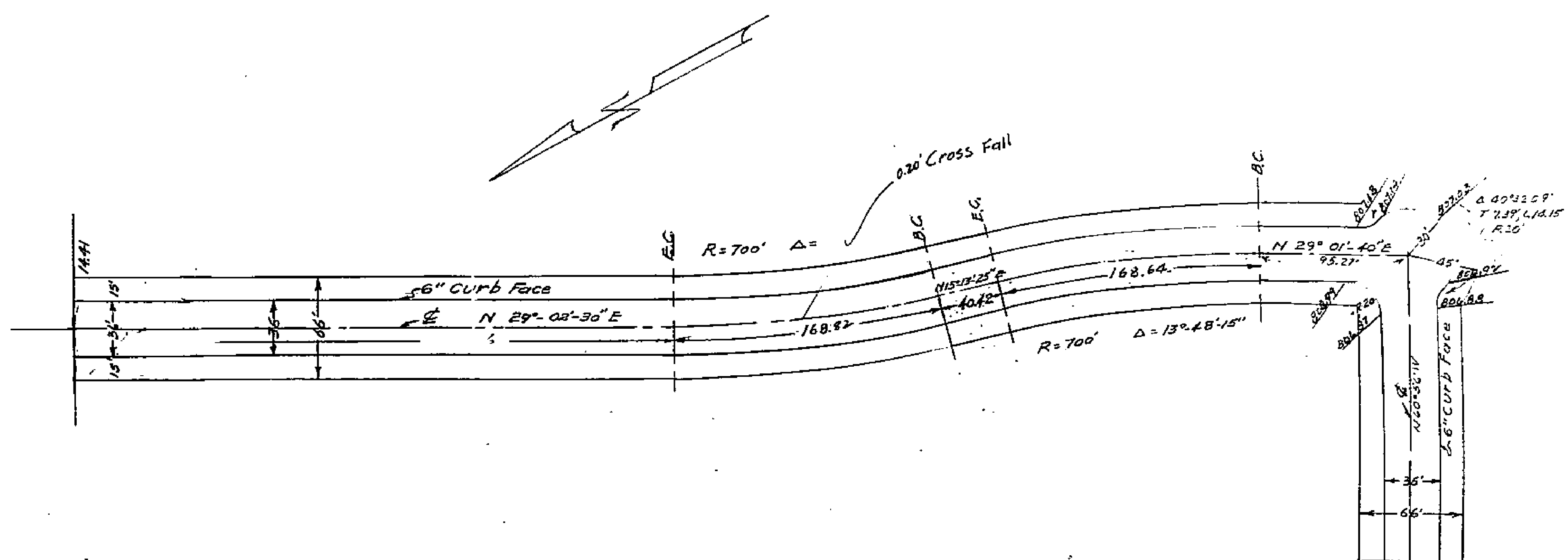
PROPERTY OF  
CITY OF RIVERSIDE  
CITY ENGINEERING DEPT.

1435



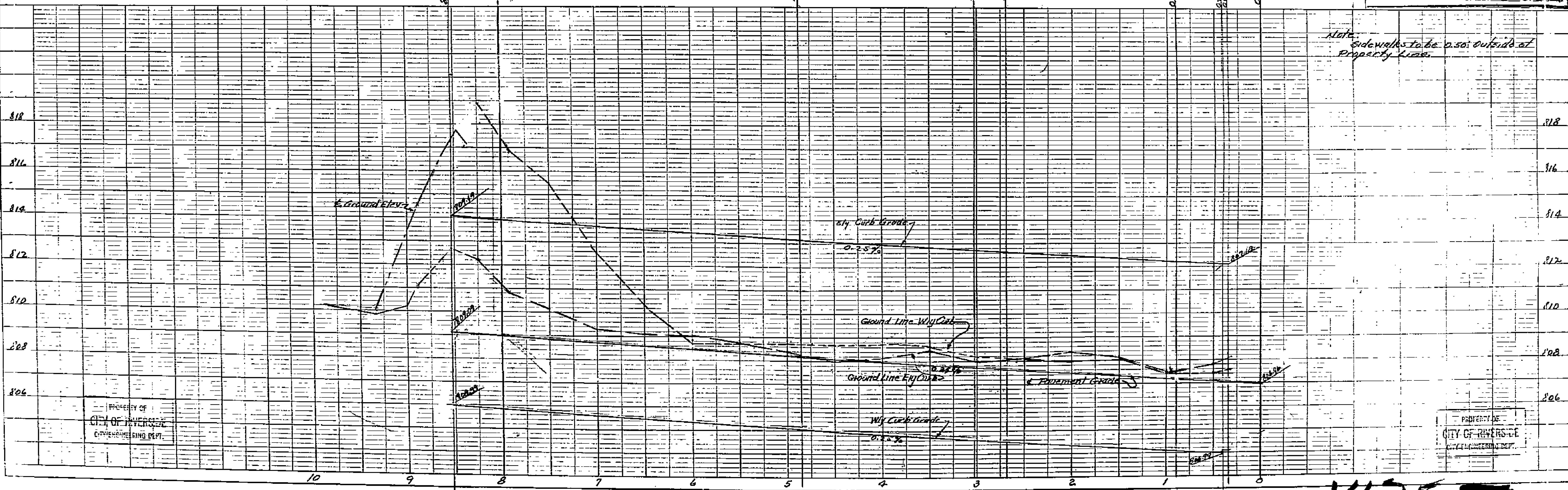
PROPERTY OF  
CITY OF RIVERSIDE  
CITY ENGINEERING DEPT.

CITY OF RIVERSIDE  
CITY ENGINEERING DEPT.



Approved by *W. J. Davis*  
Date Dec 30th 1952 City Engineer

RIVERSIDE ENGINEERING CO.  
RIVERSIDE, CALIFORNIA  
FOR ORANGE MAJOR No. 2  
Plan & Profile of Streets  
DRAWN BY *W. J. Davis* CHECKED BY *J. S. C. A. 1/1/53*  
DATE 9-8-52 REVISED 1-7-53  
*K. S. G. M. D.* & STRUCTURAL ENGR. 126  
SHEET 3 OF 3

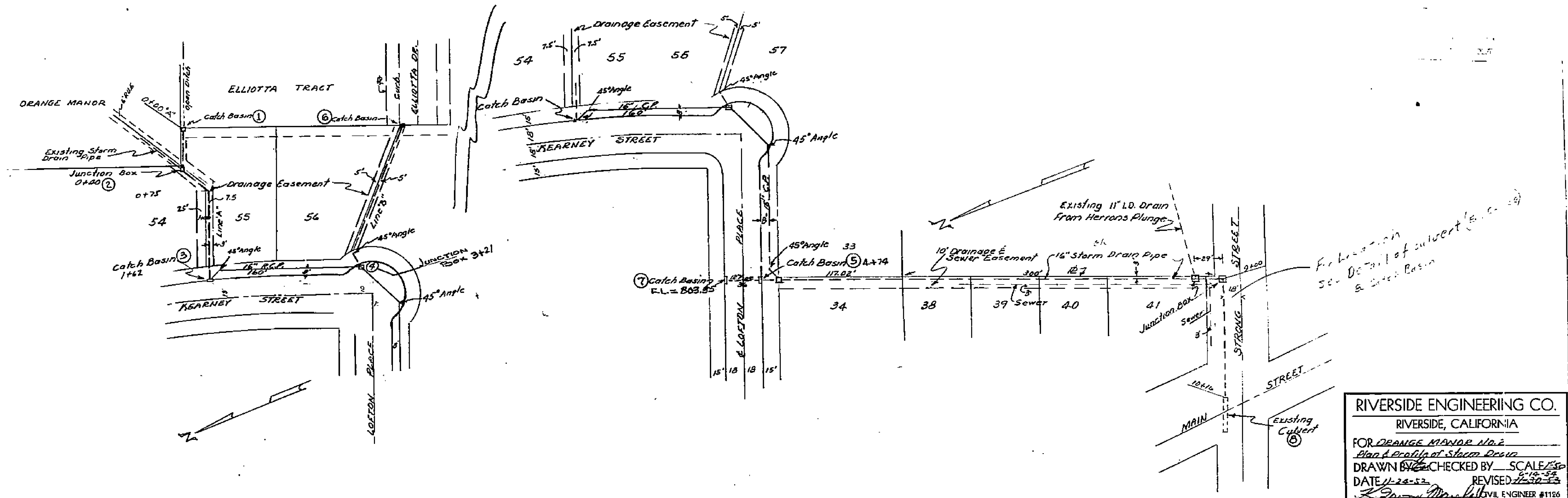


PROPERTY OF  
CITY OF RIVERSIDE  
CITY ENGINEERING DEPT.

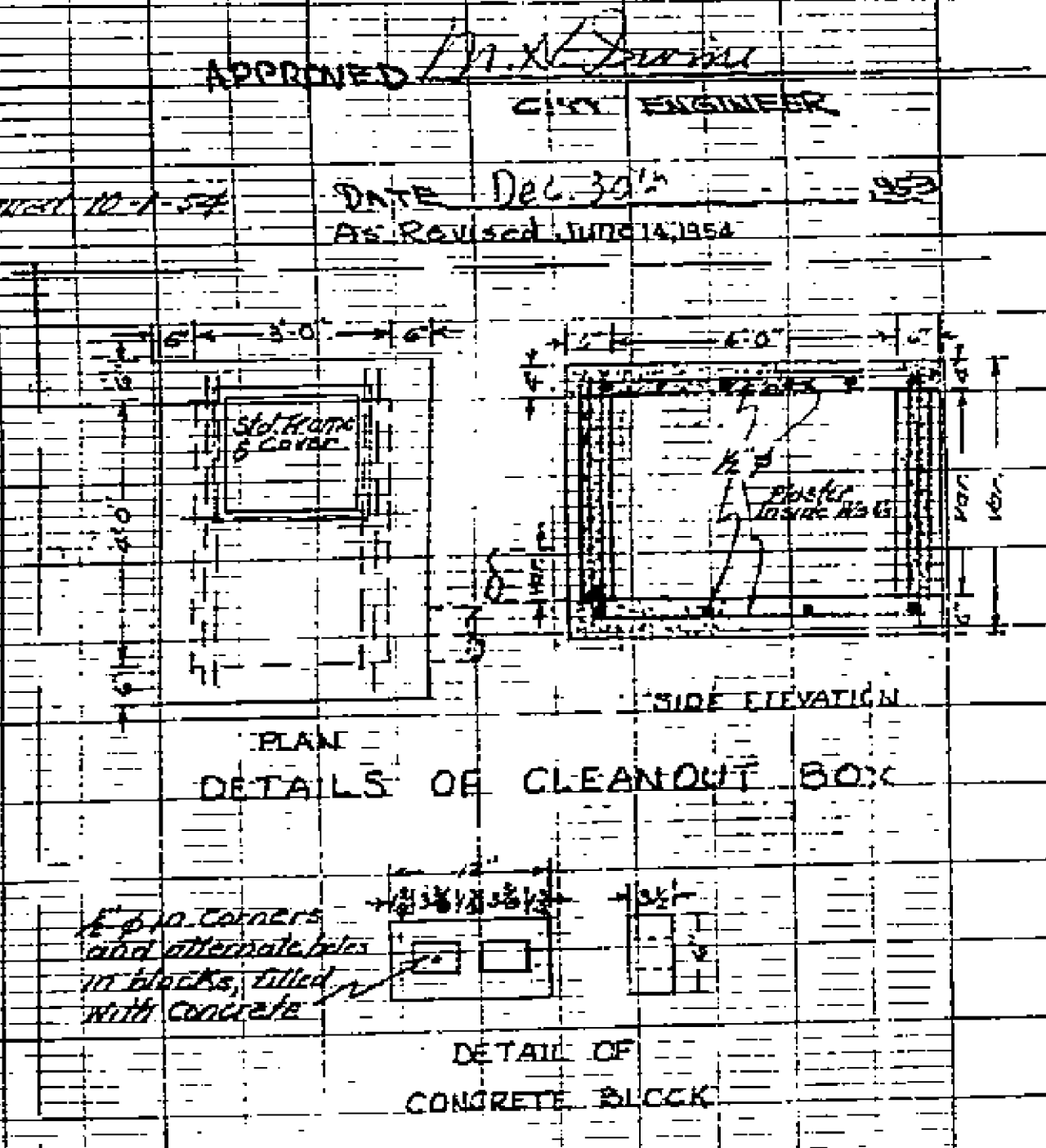
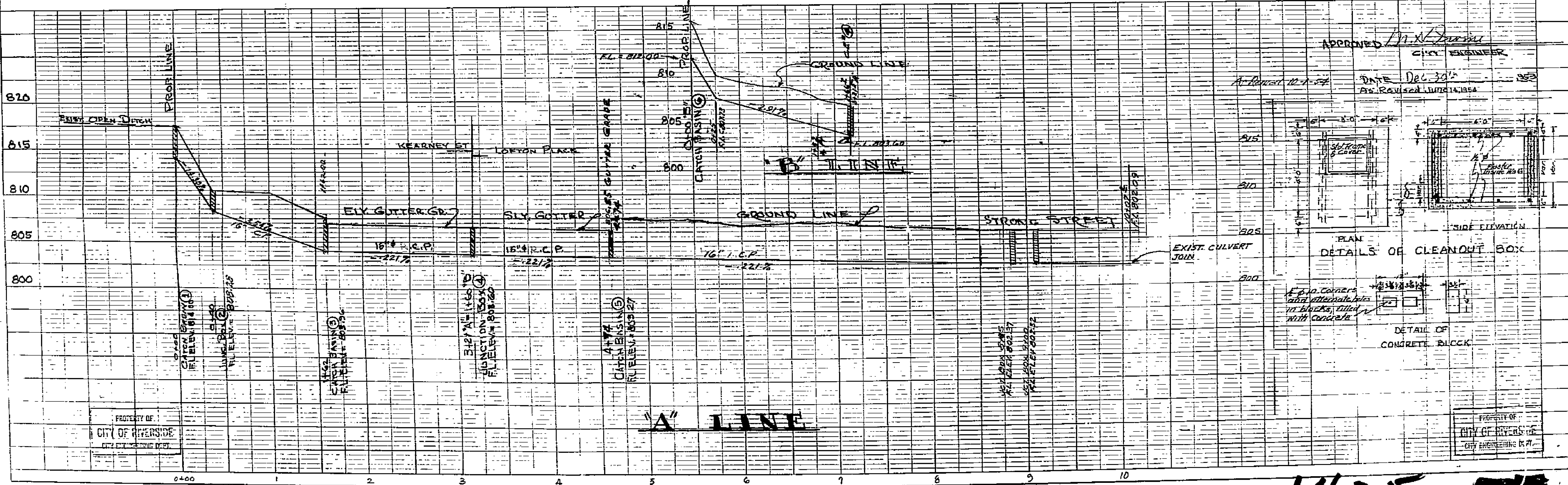
PROPERTY OF  
CITY OF RIVERSIDE  
CITY ENGINEERING DEPT.

1435

PROPERTY OF  
CITY OF RIVERSIDE  
CITY ENGINEERING DEPT.



RIVERSIDE ENGINEERING CO.  
RIVERSIDE, CALIFORNIA  
FOR ORANGE MANOR No. 2  
Plan & Profile of Storm Drain  
DRAWN BY [Signature] CHECKED BY [Signature] SCALE 1\"/>



APPROVED [Signature]  
CITY ENGINEER  
DATE Dec. 30, 1953  
As Revised June 14, 1954

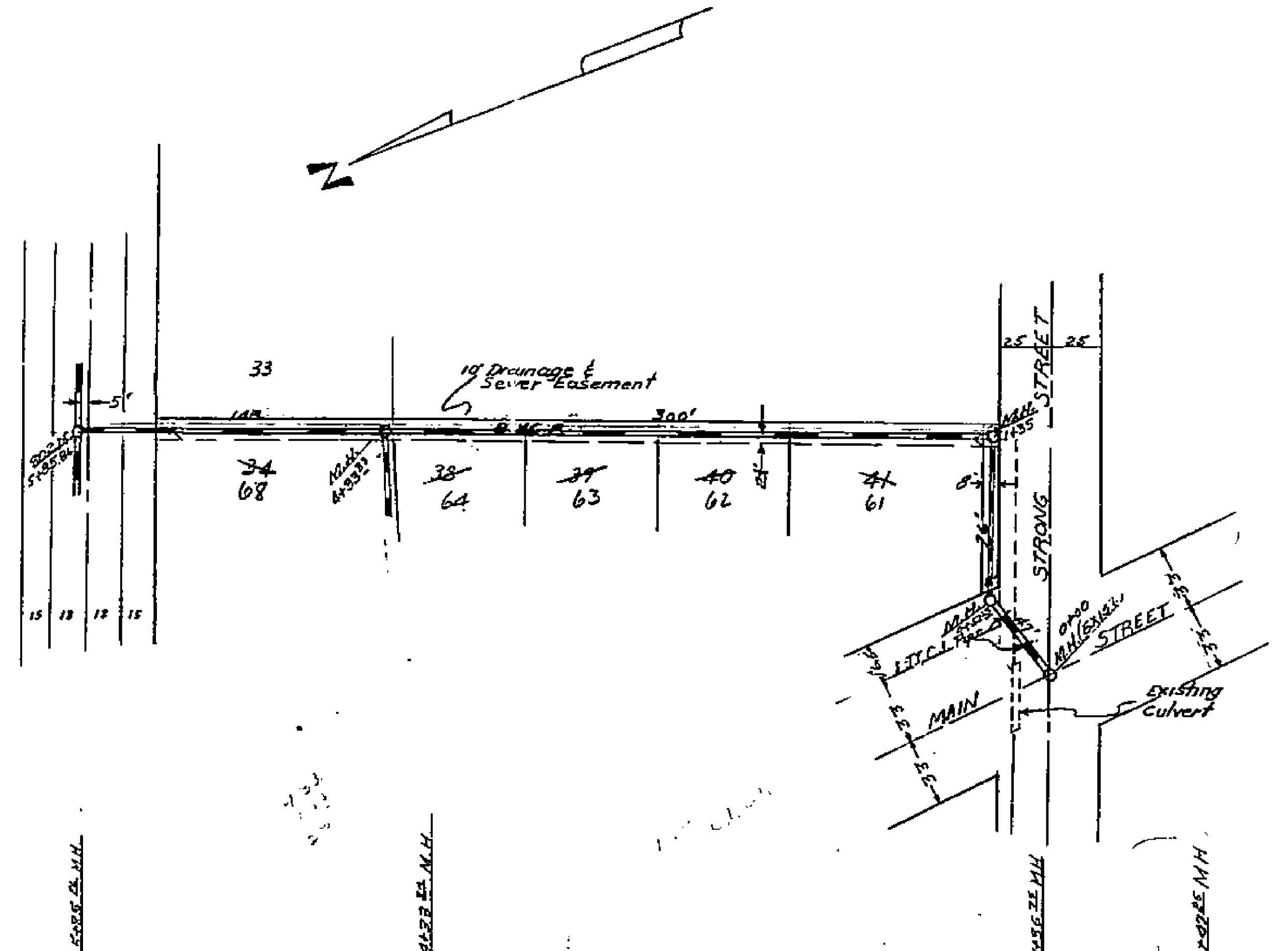
PROPERTY OF  
CITY OF RIVERSIDE  
CITY ENGINEERING DEPT.

PROPERTY OF  
CITY OF RIVERSIDE  
CITY ENGINEERING DEPT.

1435

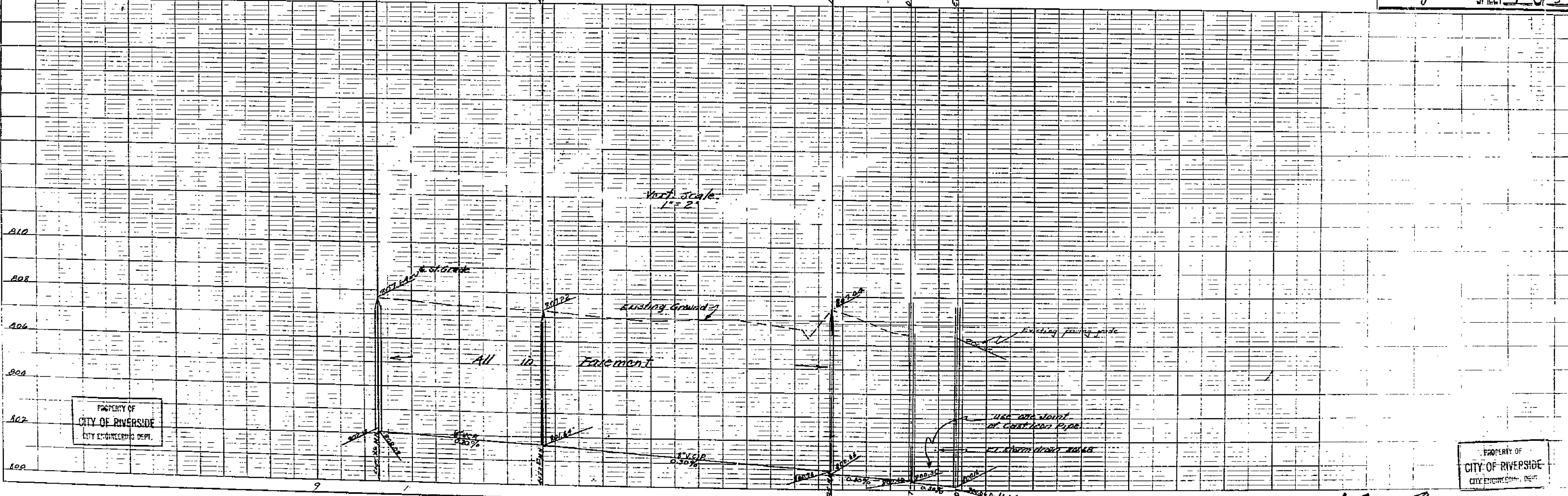
PROPERTY OF  
CITY OF RIVERSIDE  
CITY ENGINEERING DEPT.

PROPERTY OF  
CITY OF RIVERSIDE  
CITY ENGINEERING DEPT.



Approved this 1<sup>st</sup> day of July 1953  
M. J. Irvine  
City Engineer

RIVERSIDE ENGINEERING CO.  
RIVERSIDE, CALIFORNIA  
FOR GRANGE MANOR NO. 2  
Plan & Profile of Sewer  
DRAWN BY EB CHECKED BY SCALE 1/2"=10'  
DATE 4-14-53 REVISED 4-12-54  
STRUCTURAL ENGINEER #1126  
SHEET 1 OF 3



PROPERTY OF  
CITY OF RIVERSIDE  
CITY ENGINEERING DEPT.

PROPERTY OF  
CITY OF RIVERSIDE  
CITY ENGINEERING DEPT.

1435