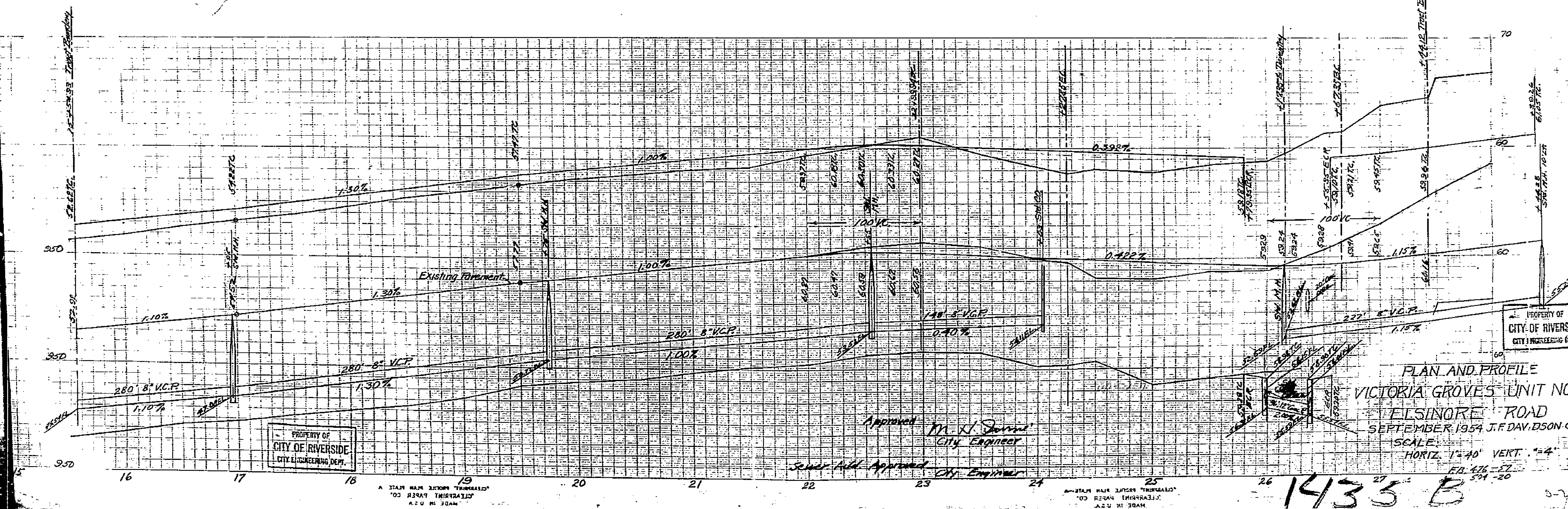
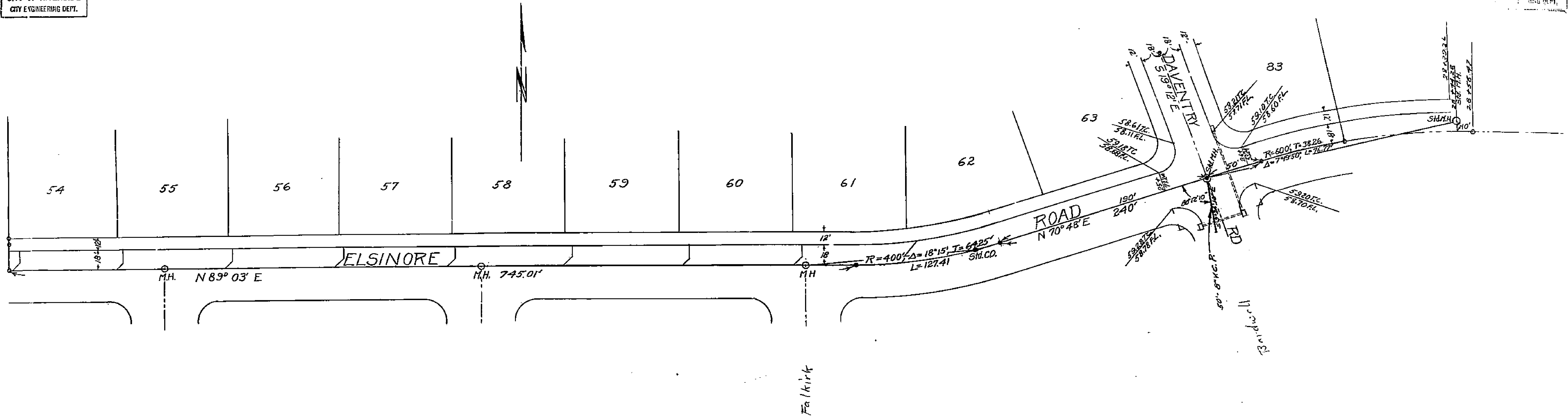


PLAN AND PROFILE  
VICTORIA GROVES UNIT NO. 3  
DAVENTRY ROAD  
SEPTEMBER 1954 J.F. DAVIDSON - C.E.  
SCALE:  
HORIZ. 1" = 40', VERT. 1" = 4'



PROPERTY OF  
CITY OF RIVERSIDE  
CITY ENGINEERING DEPT.

Approved *M. H. Dorn*  
City Engineer

Sever *Paul* Approved *City Engineer*

PLAN AND PROFILE  
VICTORIA GROVES UNIT NO  
1 ELSINORE ROAD  
SEPTEMBER, 1954 J.F. DAVENSON C.  
SCALE: HORIZ. 1"=40' VERT. 1"=4'  
FR. 476-57  
591-20

1435 B