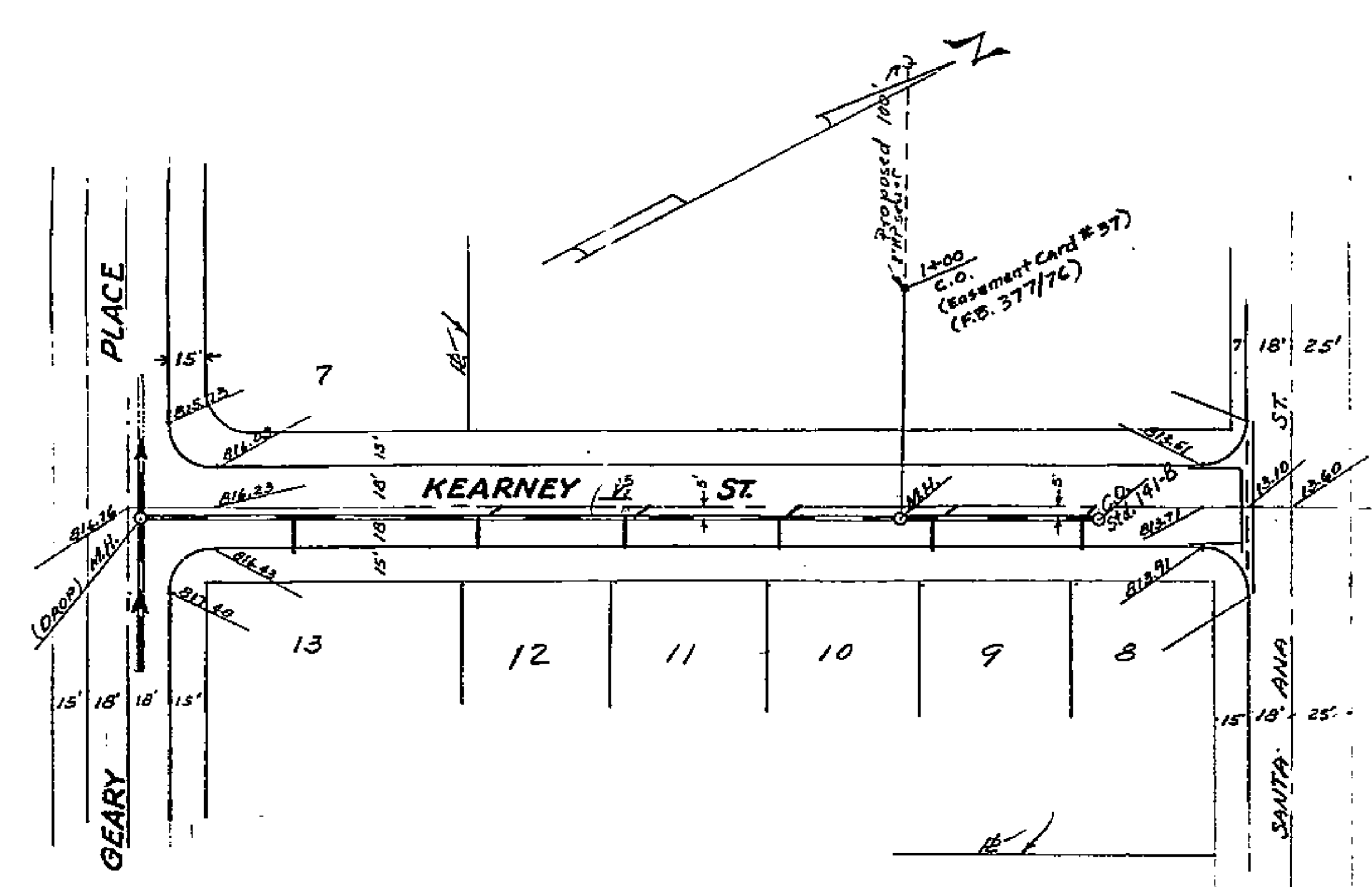


PROPERTY OF
CITY OF RIVERSIDE
CITY ENGINEERING DEPT.

PROPERTY OF
CITY OF RIVERSIDE
CITY ENGINEERING DEPT.



FAIRMOUNT HOMES

RIVERSIDE ENGINEERING CO.
RIVERSIDE, CALIFORNIA

FOR SOUTHERN COMMERCIAL CO.
Plan & Profile of Sewers

DRAWN BY *W.E.* CHECKED BY *W.E.* SCALE *1"=20'*

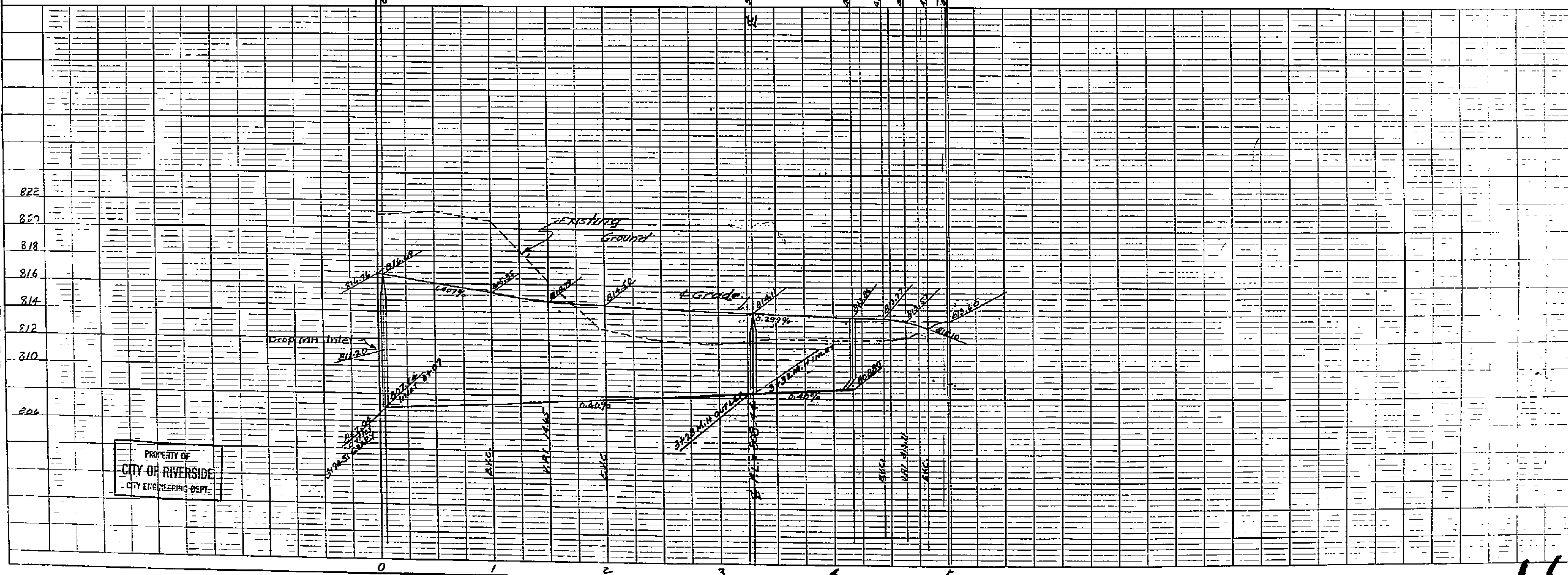
DATE *11-9-53* REVISED *2-8-54*

W.E. Spring CIVIL & STRUCTURAL ENGINEER #1126

SHEET 2 OF 2

Approved *W.E. Spring*
Date *11-15-53*
City Engineer

REVISED MAY 5, 1954
W.E. Spring



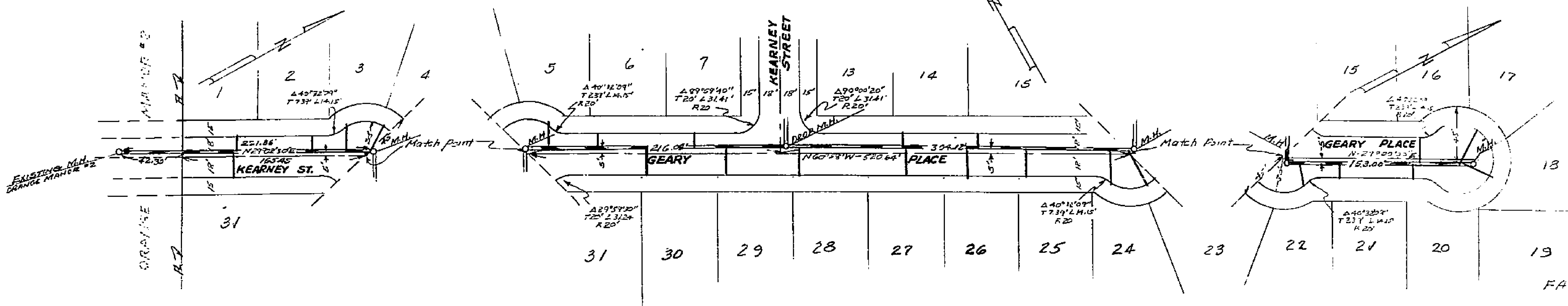
PROPERTY OF
CITY OF RIVERSIDE
CITY ENGINEERING DEPT.

PROPERTY OF
CITY OF RIVERSIDE
CITY ENGINEERING DEPT.

1436

PROPERTY OF
CITY OF RIVERSIDE
CITY ENGINEERING DEPT.

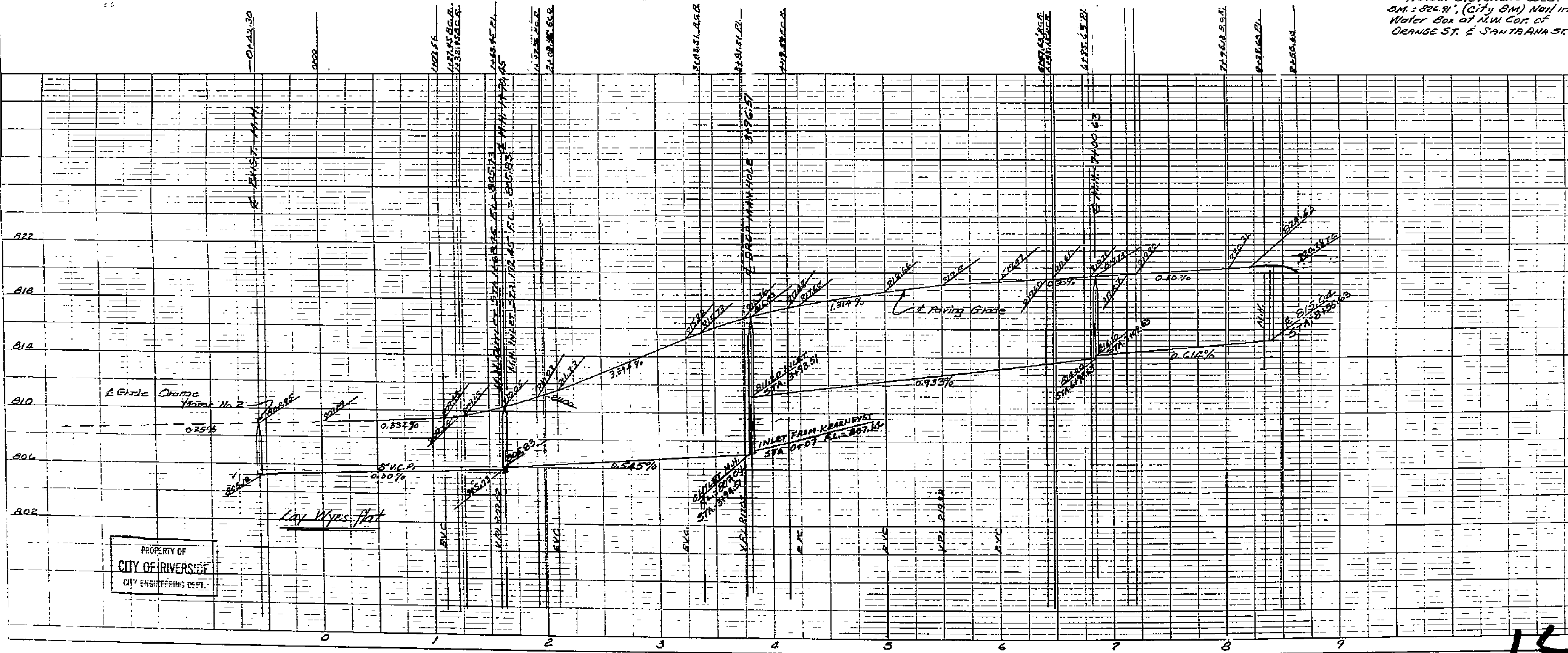
PROPERTY OF
CITY OF RIVERSIDE
CITY ENGINEERING DEPT.



RIVERSIDE ENGINEERING CO.
RIVERSIDE, CALIFORNIA
FOR SOUTHERN COMMERCIAL CORP
Plan & Profile of Sewer
DRAWN BY W. J. [unclear] CHECKED BY [unclear] SCALE 1/32"
DATE 11-19-53 REVISED 7-30-54
CIVIL ENGINEER #1185
JOB NO. 1436 SHEET 1 OF 2

Note:
Actual Elevations Used.
BM = 826.91' (City BM) Nail in
Water Box at NW Cor. of
ORANGE ST. & SANTA ANA ST.

Approved: [Signature]
City Engineer
Date: Feb. 10, 1954
REVISED MAY 4, 1954
[Signature]

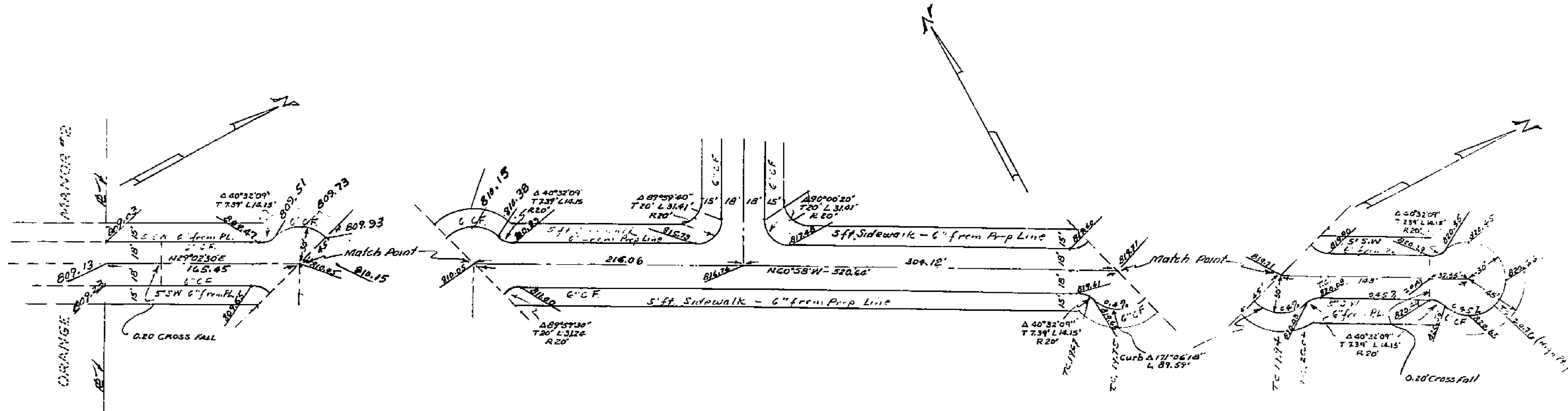


PROPERTY OF
CITY OF RIVERSIDE
CITY ENGINEERING DEPT.

PROPERTY OF
CITY OF RIVERSIDE
CITY ENGINEERING DEPT.

1436

PROPERTY OF
CITY OF RIVERSIDE
ENGINEERING DEPT.



PL. 2140 UNIT HO 103

RIVERSIDE ENGINEERING CO.
RIVERSIDE, CALIFORNIA

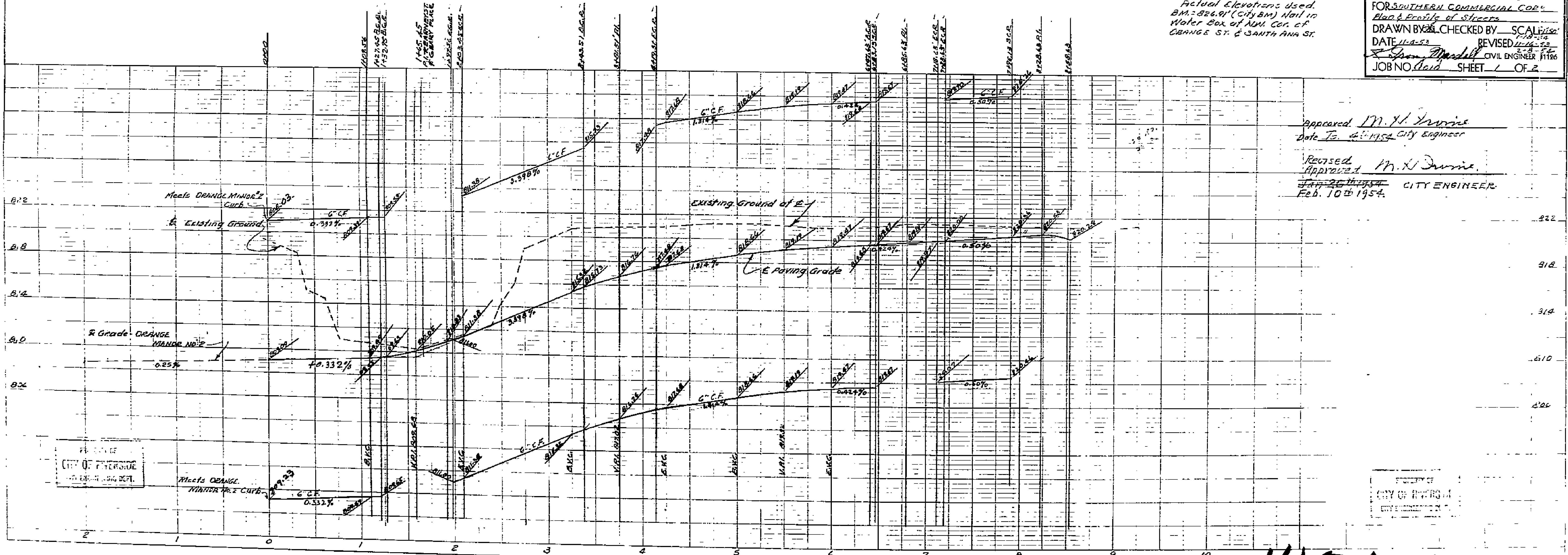
FOR SOUTHERN COMMERCIAL CORP.
Plan & Profile of Streets

DRAWN BY SCALF CHECKED BY SCALF
DATE 11-9-53 REVISED 11-16-53
Spencer Marshall CIVIL ENGINEER #1126
JOB NO. 1436 SHEET 1 OF 2

Note:
Actual Elevation used.
BM = 826.81' (City BM) Nail in
Water Box of NW. Cor. of
ORANGE ST. & SANTA ANA ST.

Approved M. H. Durrie
Date Feb. 10, 1954 City Engineer

Revised
Approved M. H. Durrie
Jan. 26, 1954 CITY ENGINEER
Feb. 10, 1954



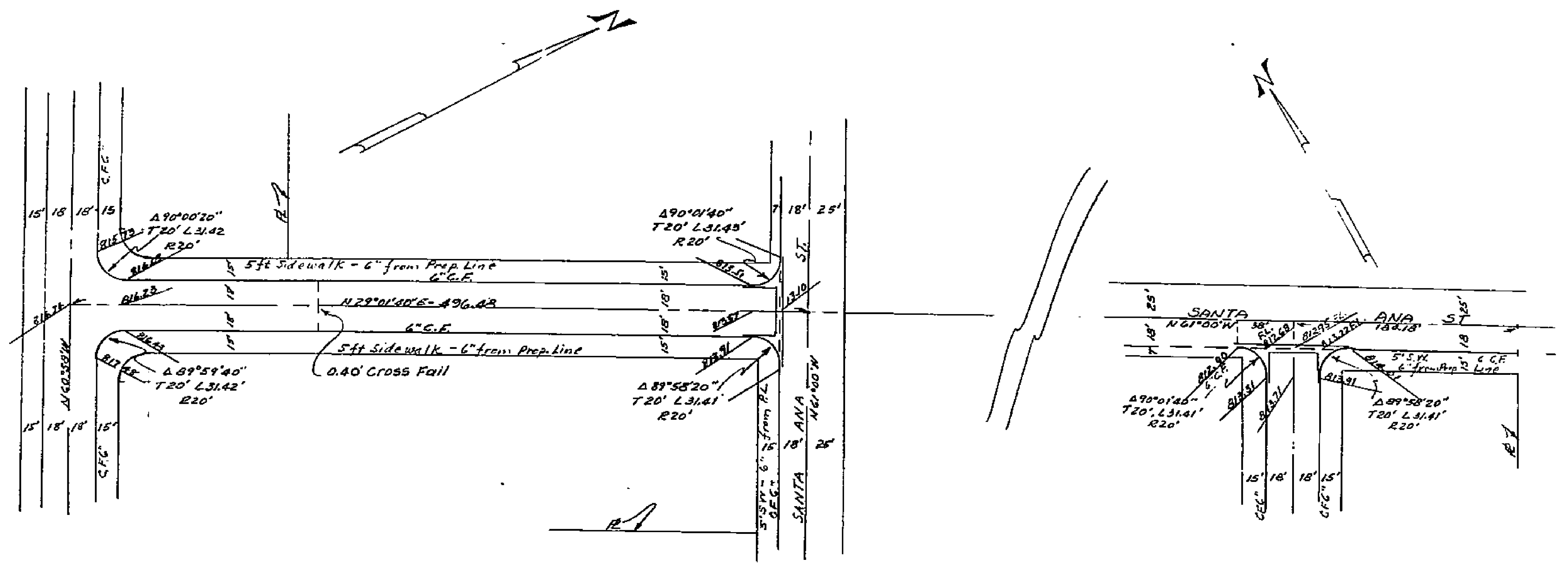
PROPERTY OF
CITY OF RIVERSIDE
ENGINEERING DEPT.

PROPERTY OF
CITY OF RIVERSIDE
ENGINEERING DEPT.

1436

PROPERTY OF
CITY OF RIVERSIDE
CITY ENGINEERING DEPT.

CITY OF RIVERSIDE
CITY ENGINEERING DEPT.



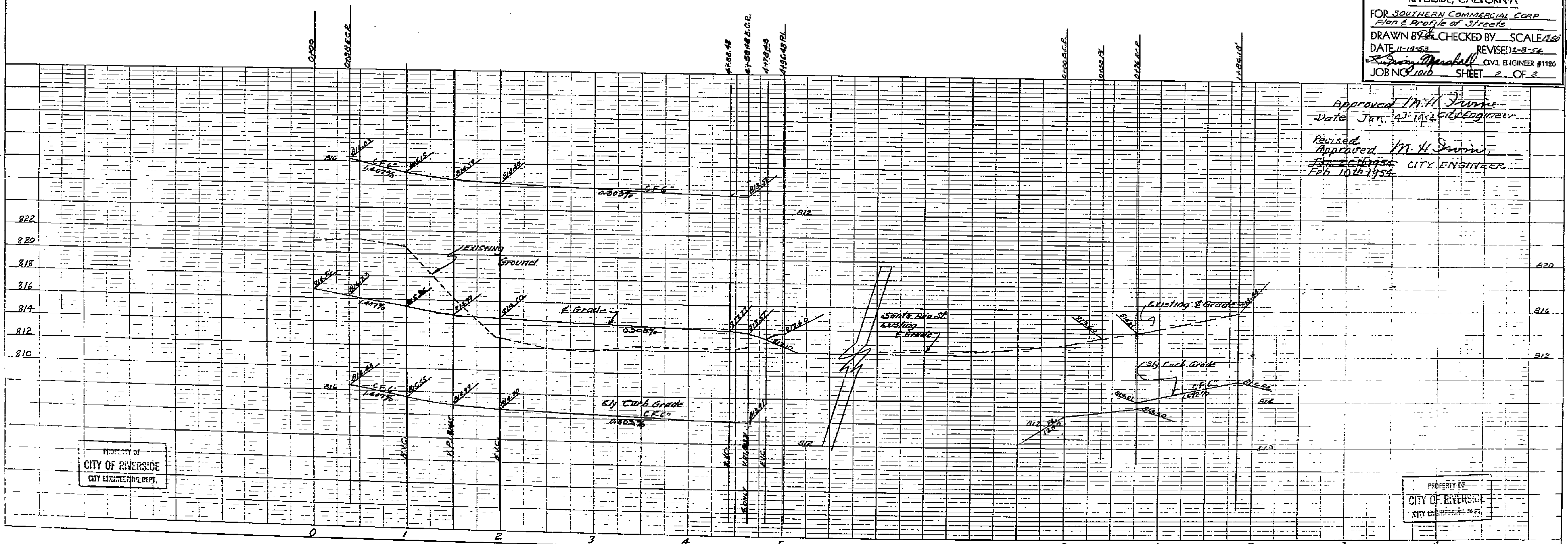
FAIRMOUNT HOMES

RIVERSIDE ENGINEERING CO.
RIVERSIDE, CALIFORNIA

FOR SOUTHERN COMMERCIAL CORP
Plan & Profile of Streets
DRAWN BY W. H. Swann CHECKED BY SCALE 1/8" = 1'-0"
DATE 11-18-52 REVISED 2-8-56
W. H. Swann CIVIL ENGINEER #1126
JOB NO. 1016 SHEET 2 OF 2

Approved W. H. Swann
Date Jan. 4, 1956 CIVIL ENGINEER

Revised W. H. Swann
Jan 26, 1956 CITY ENGINEER
Feb 10, 1956



PROPERTY OF
CITY OF RIVERSIDE
CITY ENGINEERING DEPT.

PROPERTY OF
CITY OF RIVERSIDE
CITY ENGINEERING DEPT.

1436