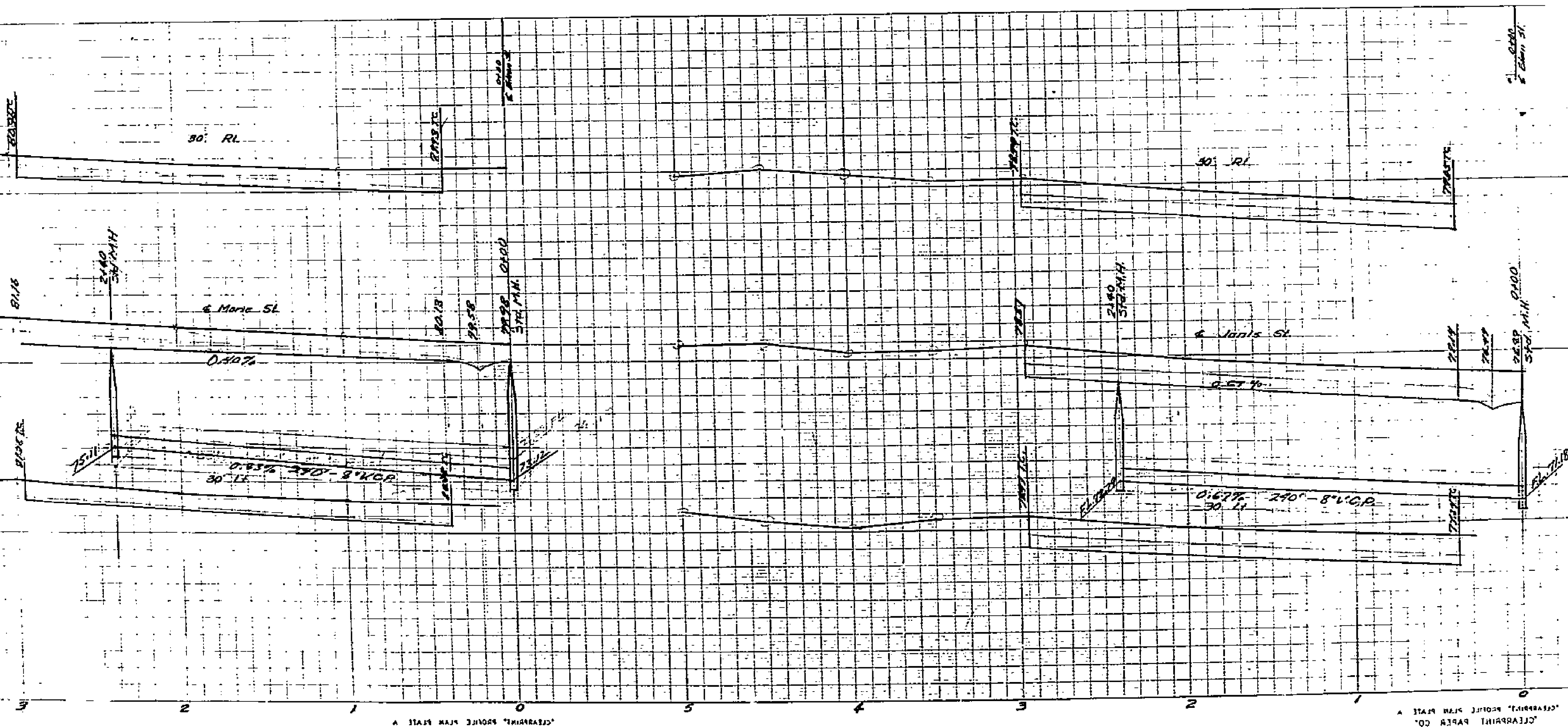


SHEET 2 OF 3 SHEETS



B.M. - Spike in lead mid-point of sidewalk return California & 5th
Elevation 768.28

Dec. 4, 1953
Approved *M. H. Swaine*
City Engineer

April 9, 1954
Approved as per revision
M. H. Swaine
City Engineer

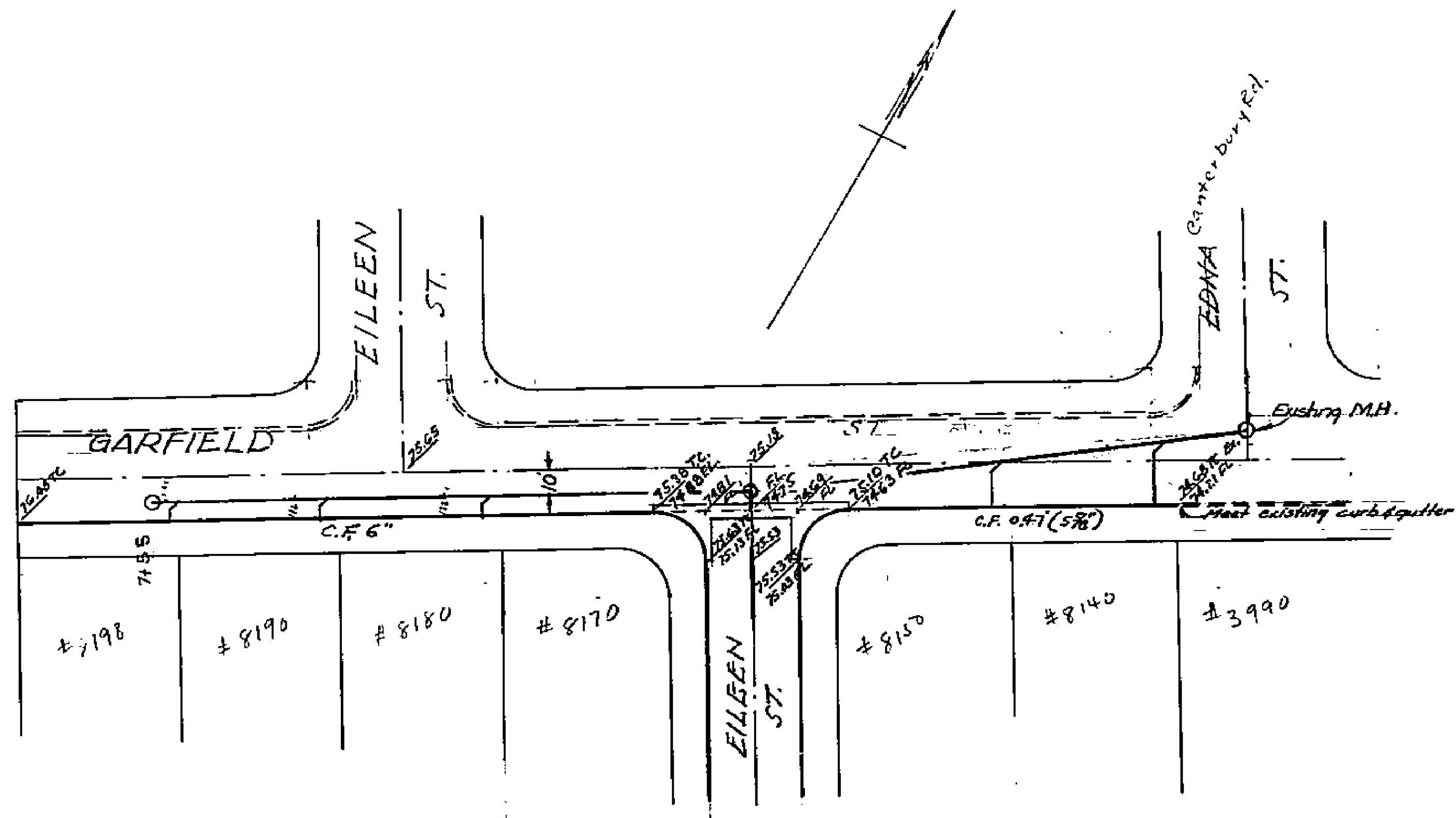
PLAN & PROFILE
COLE TRACT
MARIE STREET & JANIS STREET

June 1953 J. F. Davidson, C.E.

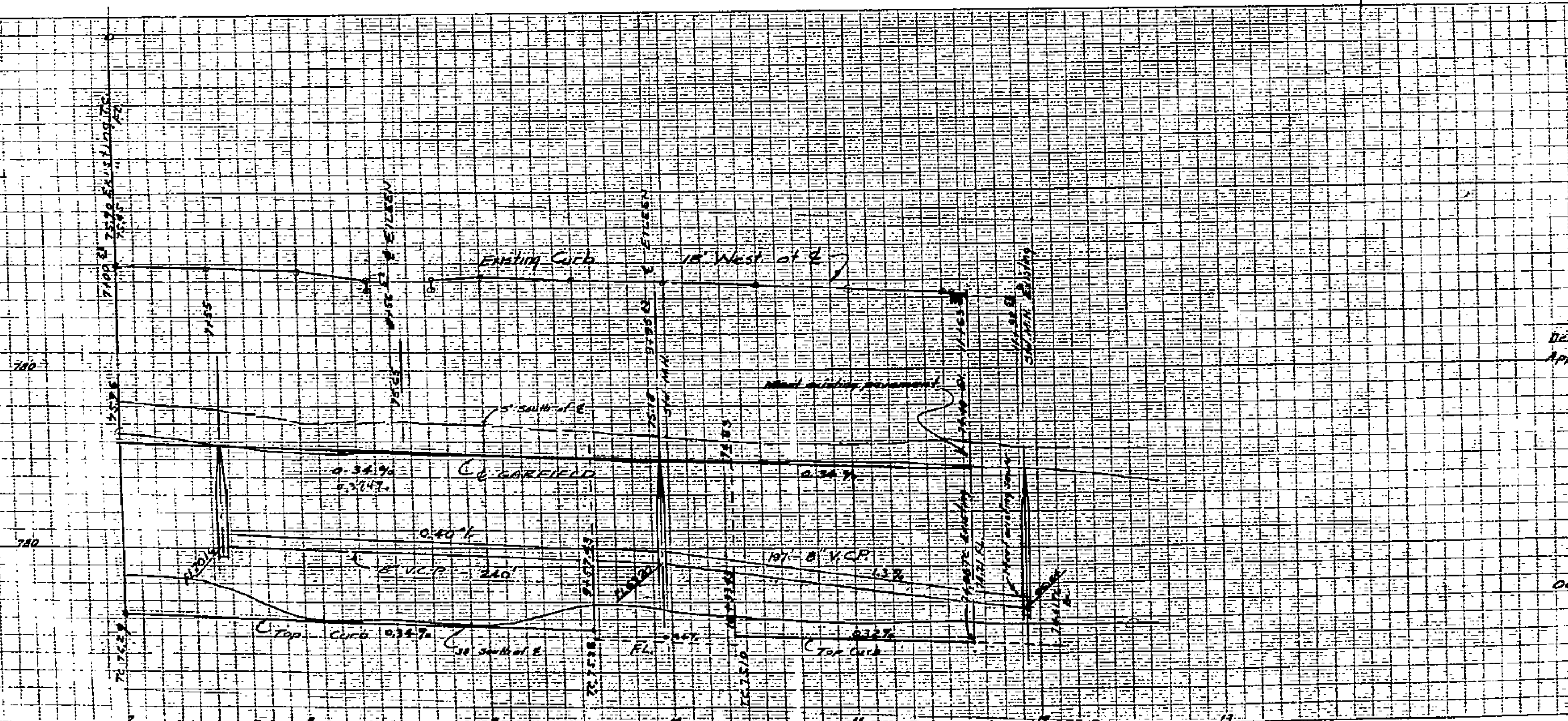
Scale
Vert. 1" = 4'
Hor. 1" = 40'
FB 43934

1444

PROPERTY OF
CITY OF RIVERSIDE
CITY ENGINEERING DEPT.



SHEET 2 OF 3 SHEETS



B.M. - spike in road mid point of suby curb return California St. Paul Elevation 708.28

DEC 4, 1953
Approved: *M. H. Swain*
City Engineer

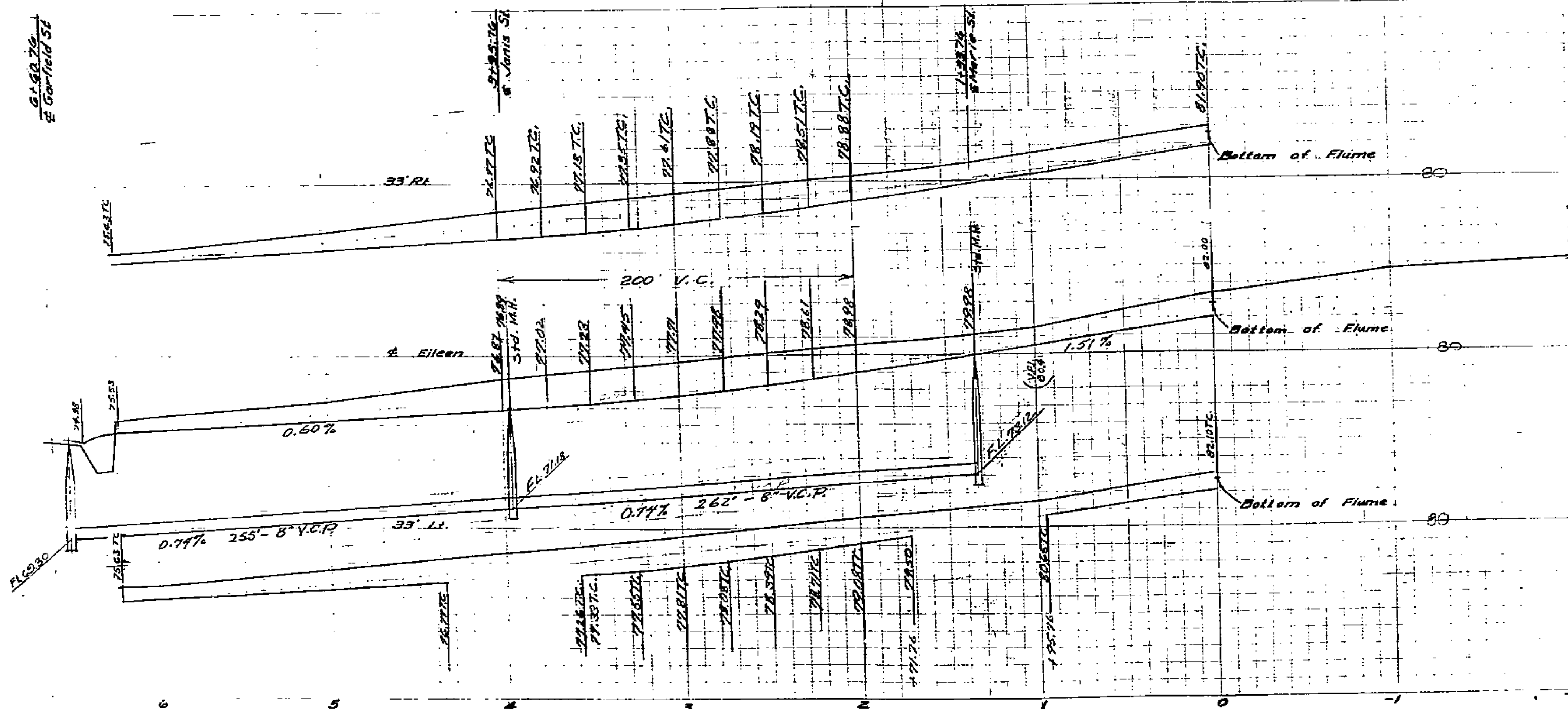
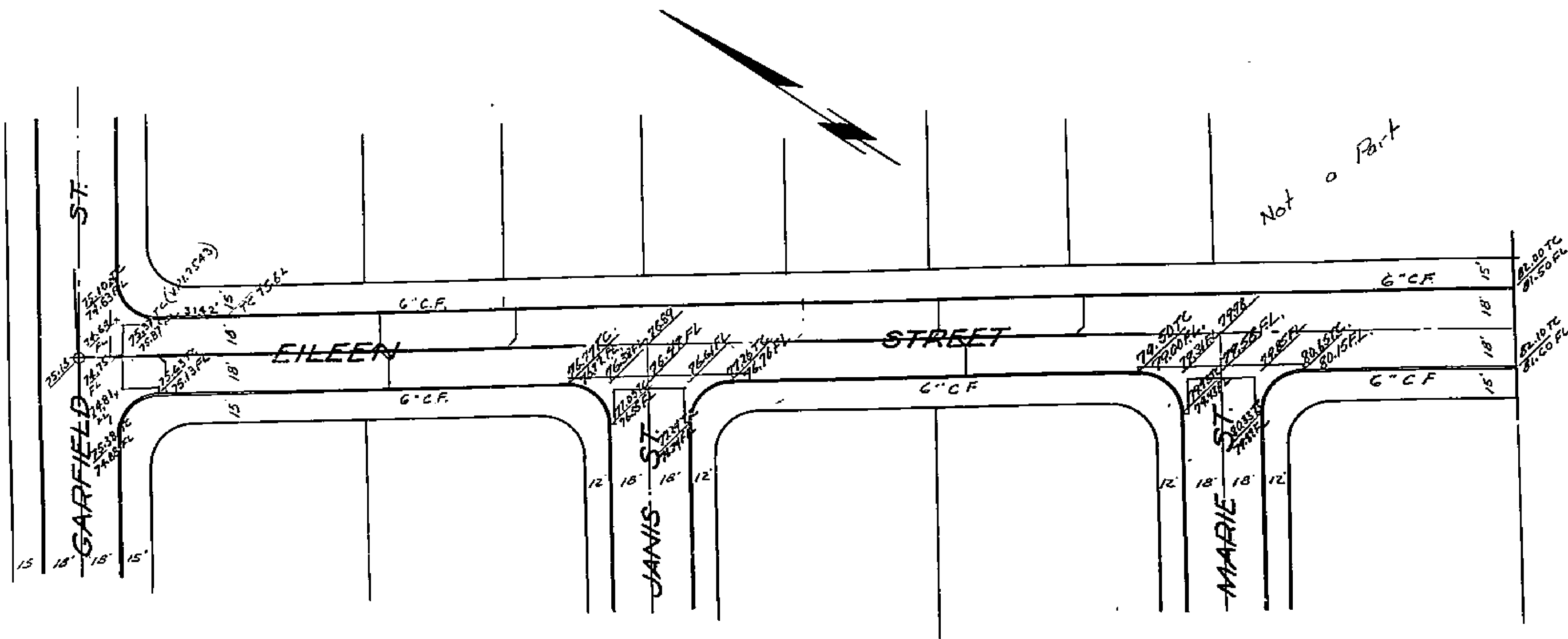
PLAN & PROFILE
COLE TRACT
GARFIELD AVE

October 1953 J.F. Davidson, C.E.

Scale: - 1" = 40'
Vert. 1" = 10'
Hgt. 1" = 10'
L.S. 153-34

PROPERTY OF
CITY OF RIVERSIDE
CITY ENGINEERING DEPT.

1444



SHEET 1 OF 3 SHEETS

B.M. - spike in lead mid point of swty curb return California & St. Paul Elevation 768.25

Dec. 9, 1953.
Approved M.H. Irvine
City Engineer

April 9, 1954
Approved as per revision
M.H. Irvine
City Engineer

PLAN & PROFILE
COLE TRACT
EILEEN STREET

June 1953 J.F. Davison, C.E.

Scale
Vert 1" = 4'
Hor 1" = 40'

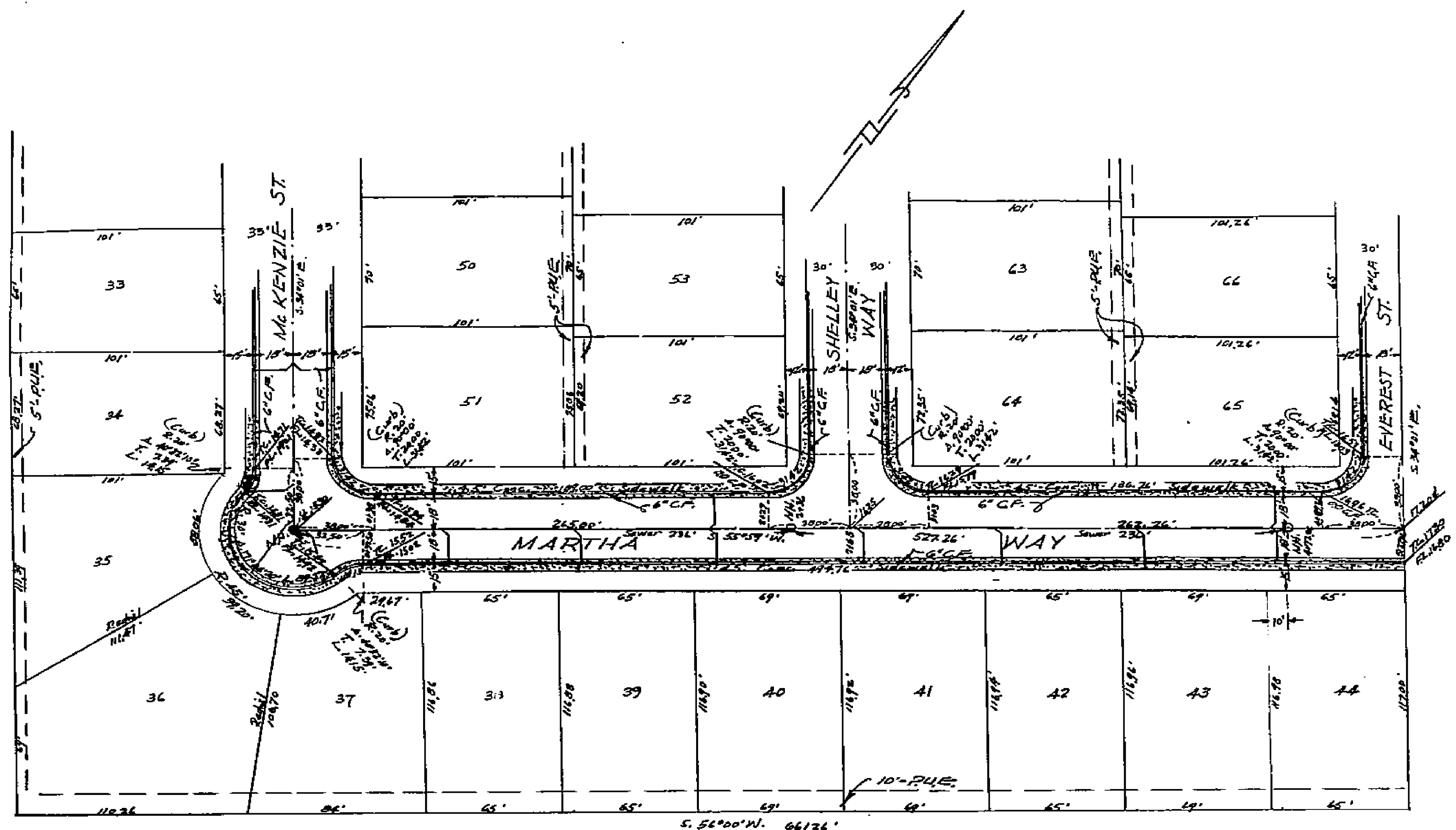
RB. 459-34

CITY OF RIVERSIDE
CITY ENGINEERING DEPT.

7444

PROPERTY OF
CITY OF RIVERSIDE
CITY ENGINEERING DEPT.

PROPERTY OF
CITY OF RIVERSIDE
CITY ENGINEERING DEPT.

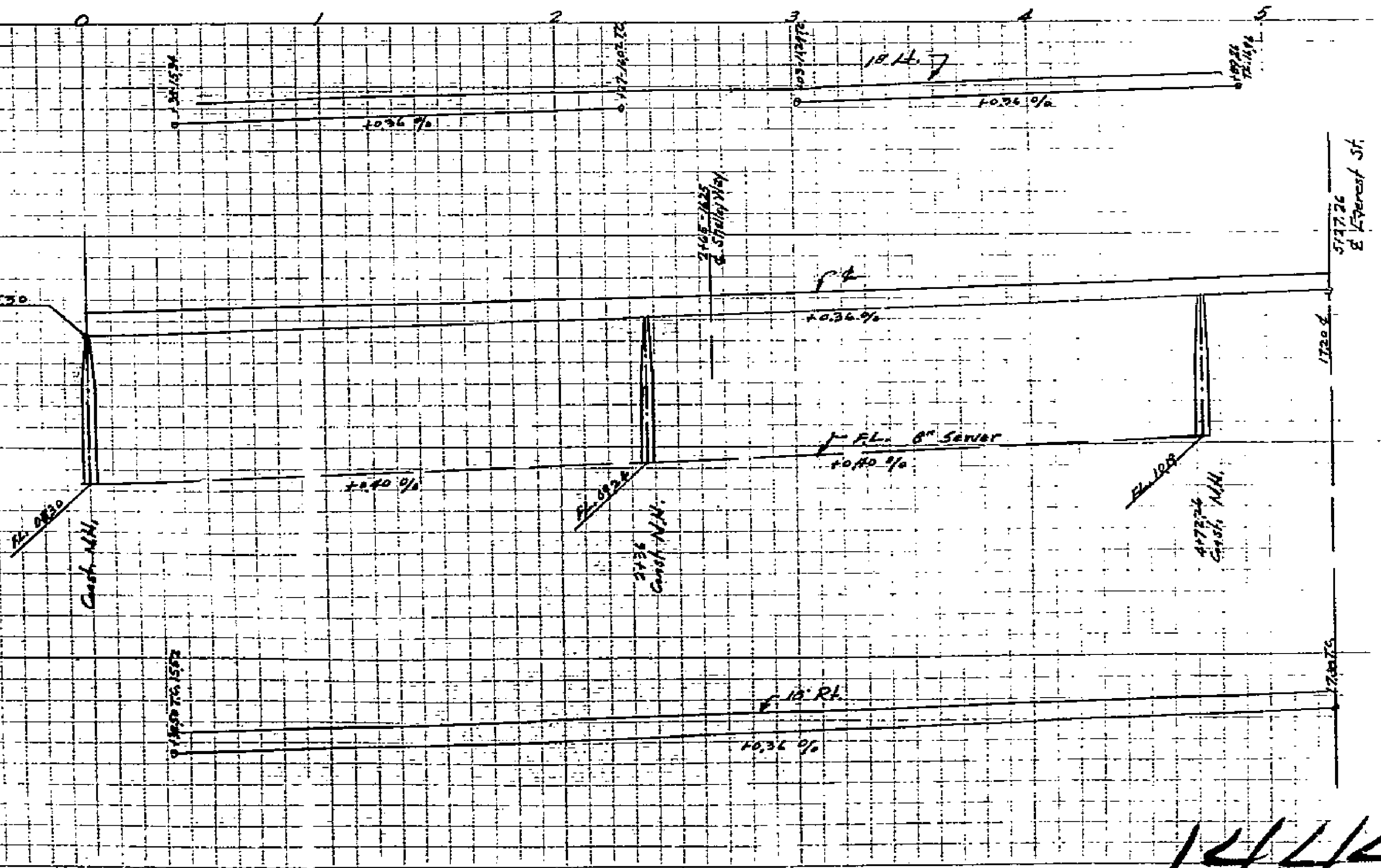


MAP
Scale: 1" = 40'

LA HACIENDA RANCHO
TRACT NO. 2
PLAN & PROFILE

April, 1954
Scale: Horiz. 1" = 40'
Vert. 1" = 4'
Donald J. McKee, L.G. Surveyor

Approved 5/13, 1954
M.H. Irvine
M.H. Irvine, City Engineer
Riverside, Calif.



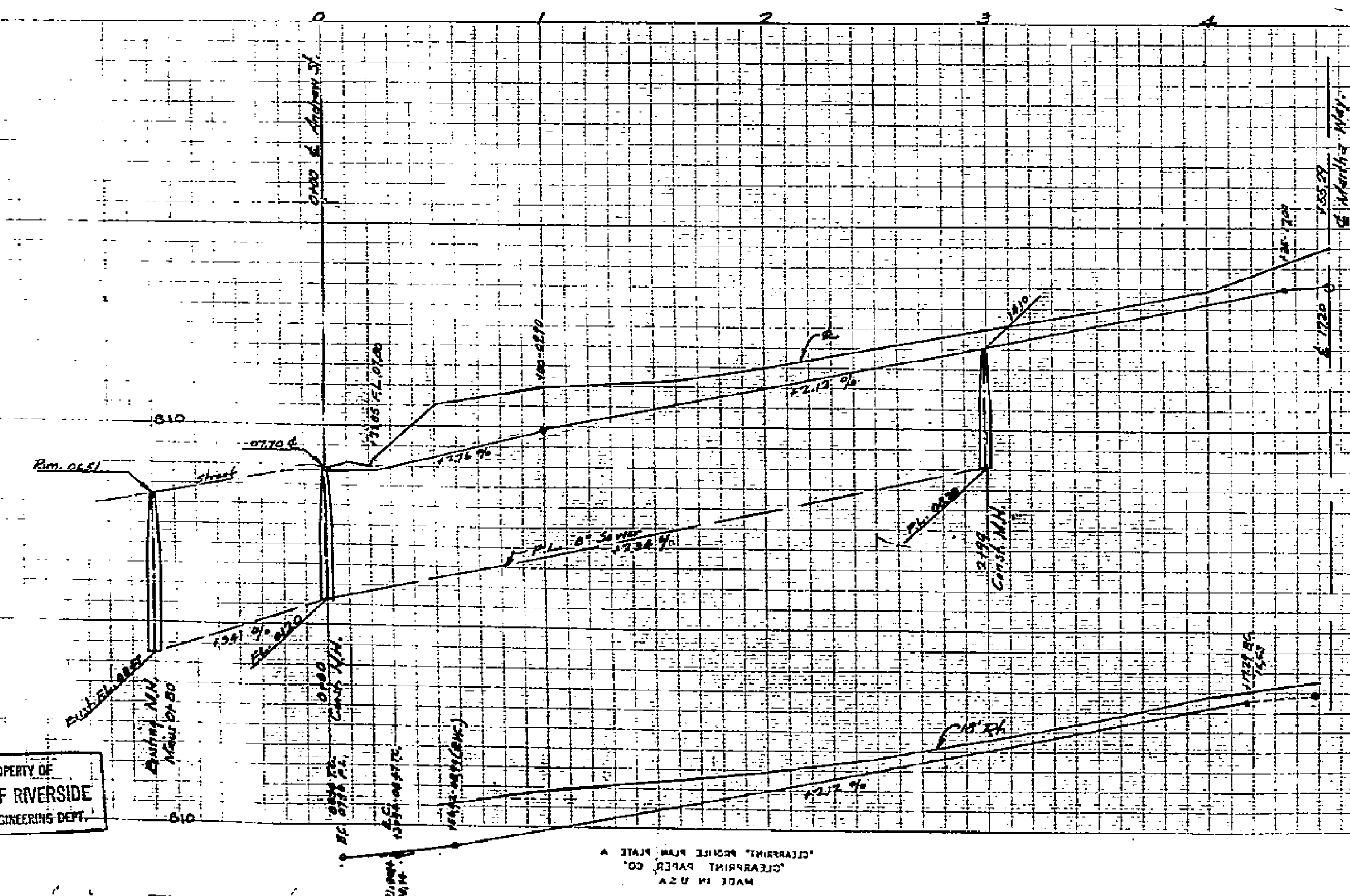
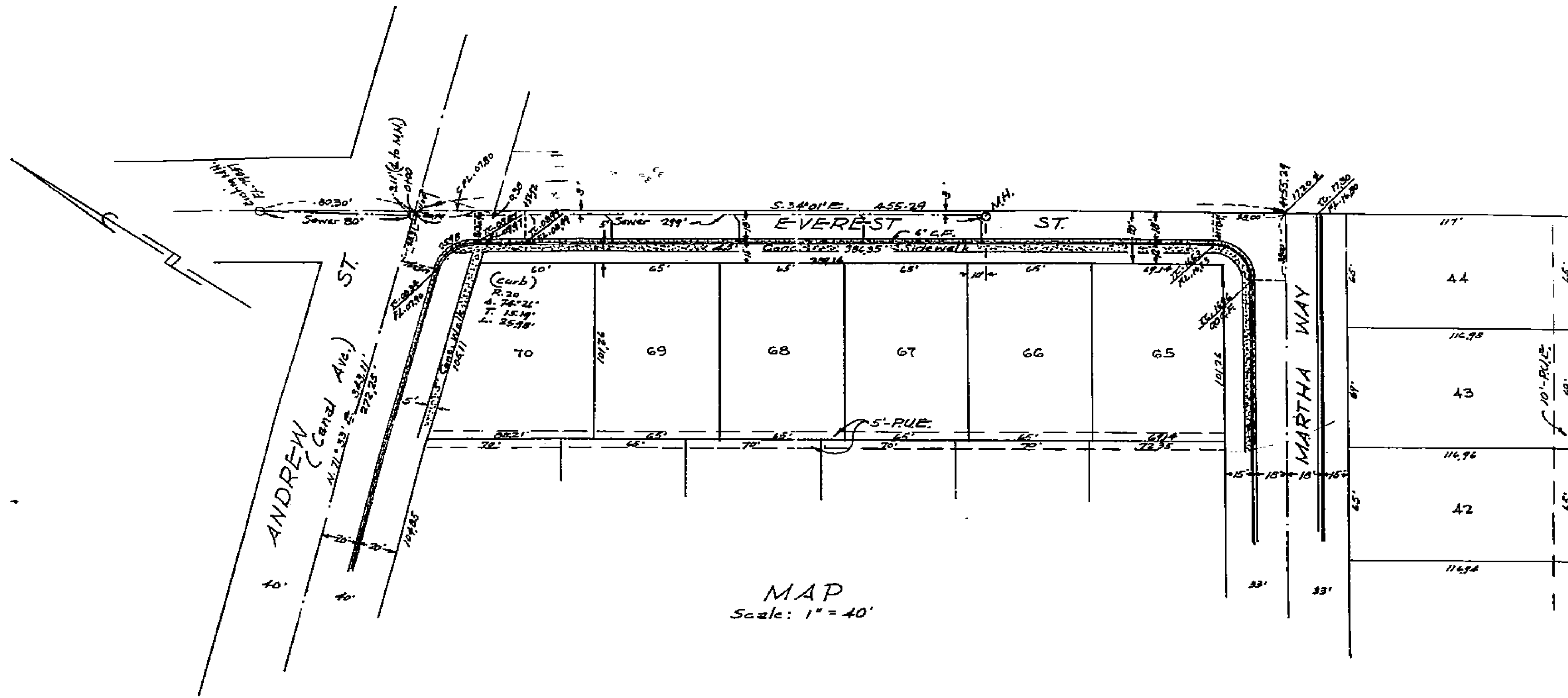
PROPERTY OF
CITY OF RIVERSIDE
CITY ENGINEERING DEPT.

PROPERTY OF
CITY OF RIVERSIDE
CITY ENGINEERING DEPT.

1444

PROPERTY OF
CITY OF RIVERSIDE
CITY ENGINEERING DEPT.

PROPERTY OF
CITY OF RIVERSIDE
CITY ENGINEERING DEPT.



LA HACIENDA RANCHO
TRACT No. 2
PLAN & PROFILE
April, 1950
Scale: Horiz. 1" = 40'
Vert. 1" = 4'
Donald J. Mc Kee, Lic. Surveyor

Approved 5/13 1954
M.H. Irvine
M.H. Irvine, City Engineer
Riverside, Calif.

1444

PROPERTY OF
CITY OF RIVERSIDE
CITY ENGINEERING DEPT.

PROPERTY OF
CITY OF RIVERSIDE
CITY ENGINEERING DEPT.

MADE IN U.S.A.
CLEARING PAPER CO.
CLEARING PAPER CO.

MADE IN U.S.A.
CLEARING PAPER CO.
CLEARING PAPER CO.