

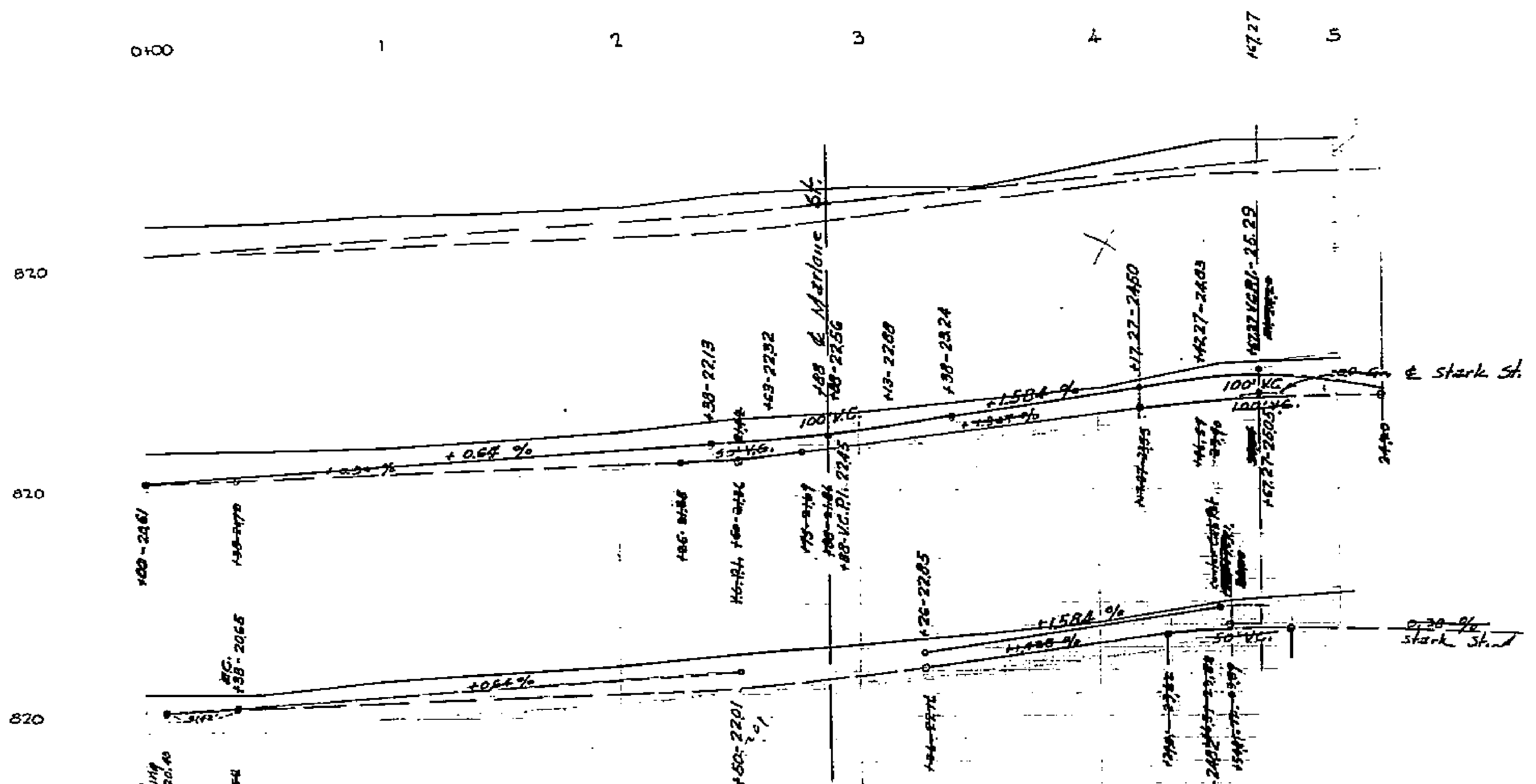
PROPERTY OF
CITY OF RIVERSIDE
CITY ENGINEERING DEPT.

PROPERTY OF
CITY OF RIVERSIDE
CITY ENGINEERING DEPT.

**CURB & STREET GRADES
BLOCK HEIGHTS**
May 1953 Scale: Vert 1"=40'
 Horiz 1"=4'

Donald J. McKee,
Lic. Surveyor

B.M.
St. = Lead in N. S. Wk. at Vland
of Hoffman Ave.
Elev. 81593



Note: Revised grades shown in black ink.

Revised Grades Approved Nov. 16th, 1953

M. H. Irvine
M.H. Irvine, City Engineer, Riverside, Calif.

Revised Grades Approved Nov. 16th, 1953

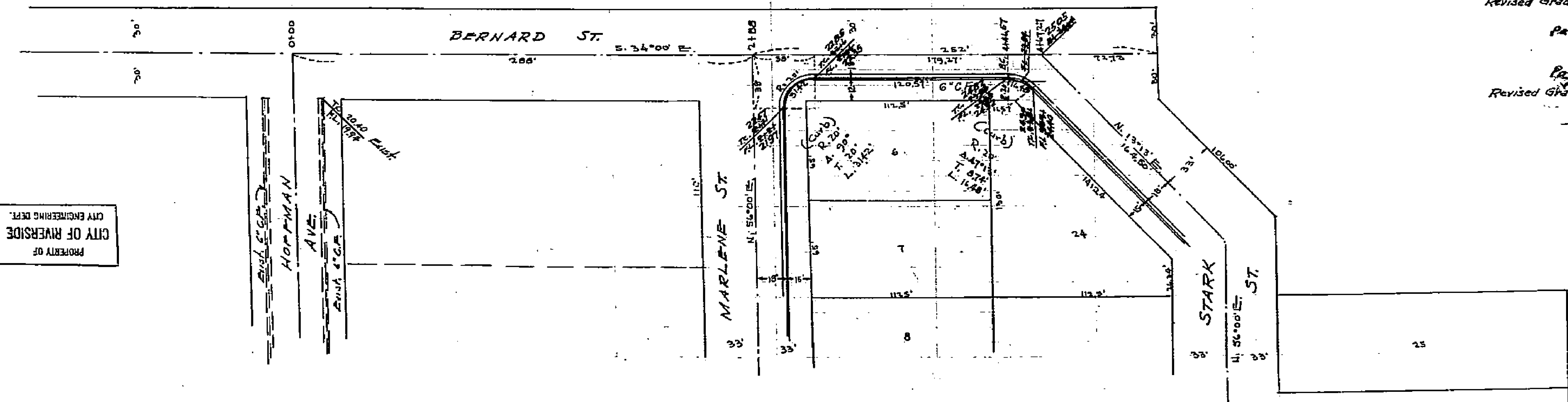
Partner E. R. Abel
Subdivider

Partner Jackman Turner

Revised Grades Approved 11-14-1953

Victor Hopkins

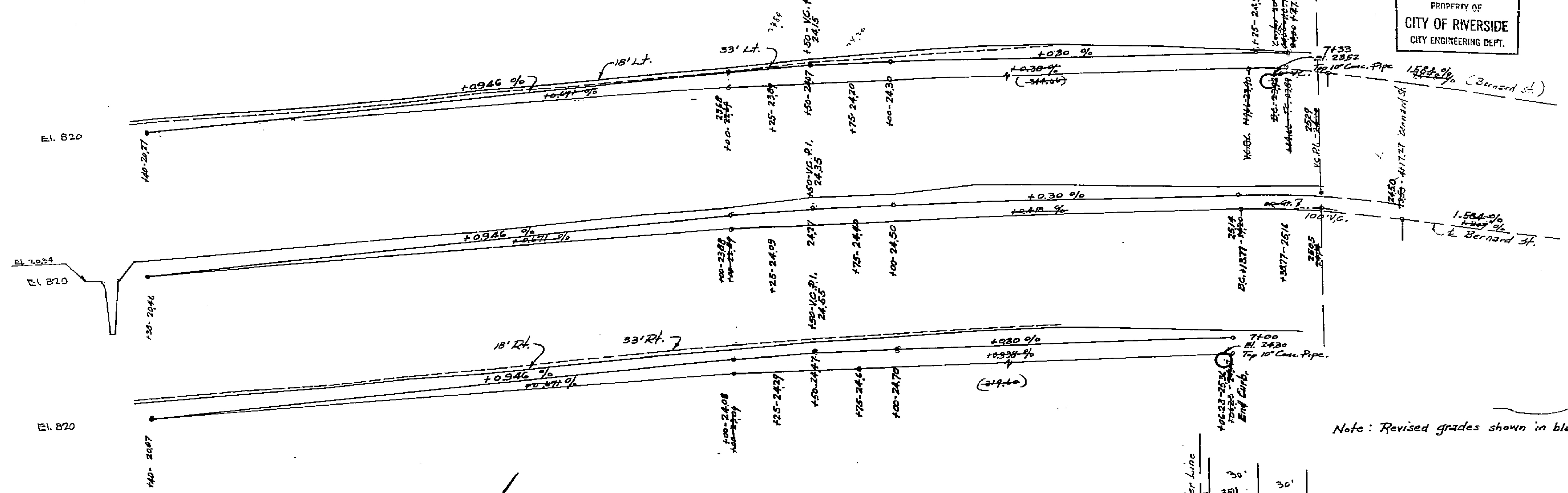
~~APPROVED~~
~~SEP 11, 1953~~
~~CITY ENGINEER~~



PROPERTY OF
CITY OF RIVERSIDE
CITY ENGINEERING DEPT.

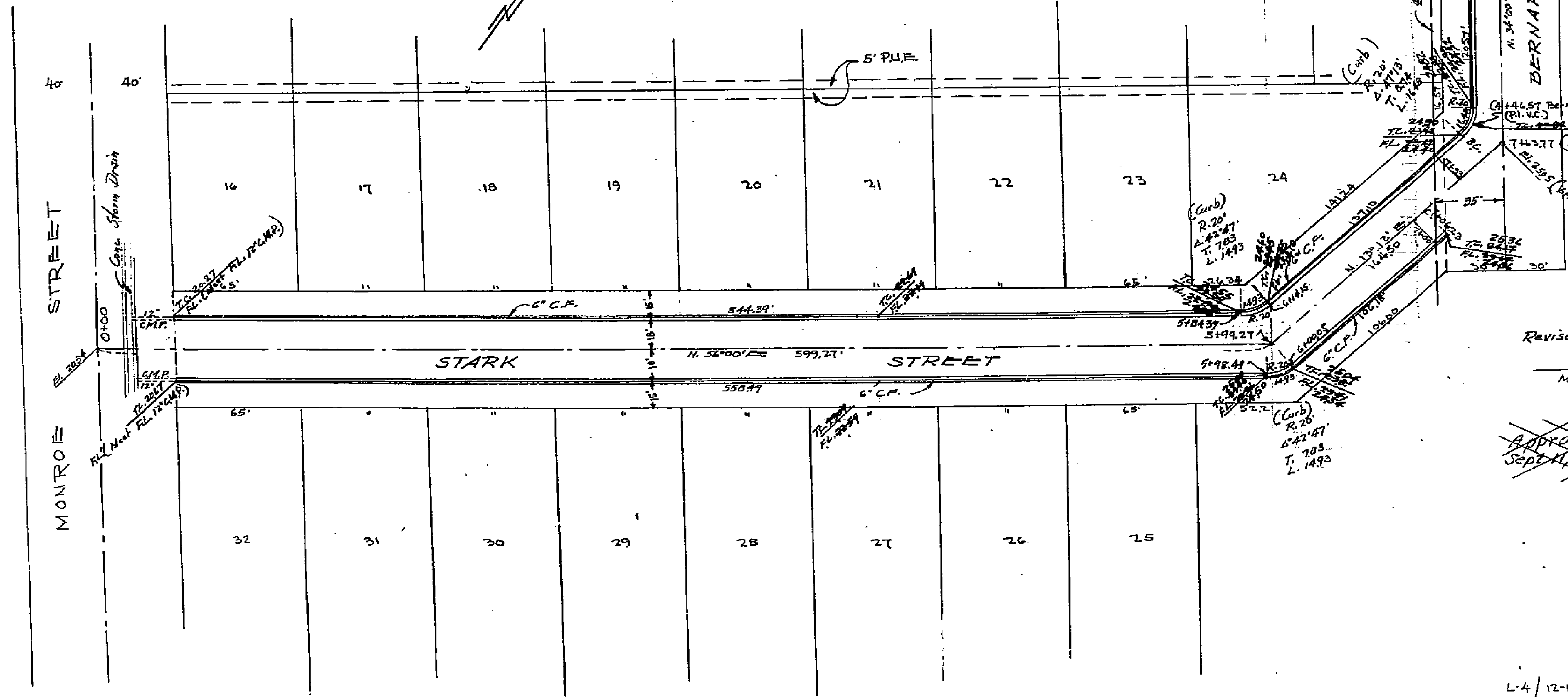
PROPERTY OF
CITY OF RIVERSIDE
CITY ENGINEERING DEPT.

P.S. L-4
1445



Note: Revised grades shown in black ink.

MAP
Scale: 1" = 40'



Revised grades Approved _____ 19

Victor Hopkins

Revised Grades Approved Nov. 16th

Partner *E.R. Block*
subdivider

Partner *Jacqueline Turner*

Revised grades approved Nov. 16th 1953
M.H. Irvine

M.H. Irvine, City Engineer, Riverside, Calif.

Approved *M.H. Irvine*
Sept. 11, 1953. CITY ENGINEER.

1445