

Approved by *M. N. Quinn* A-22-52  
City Engineer

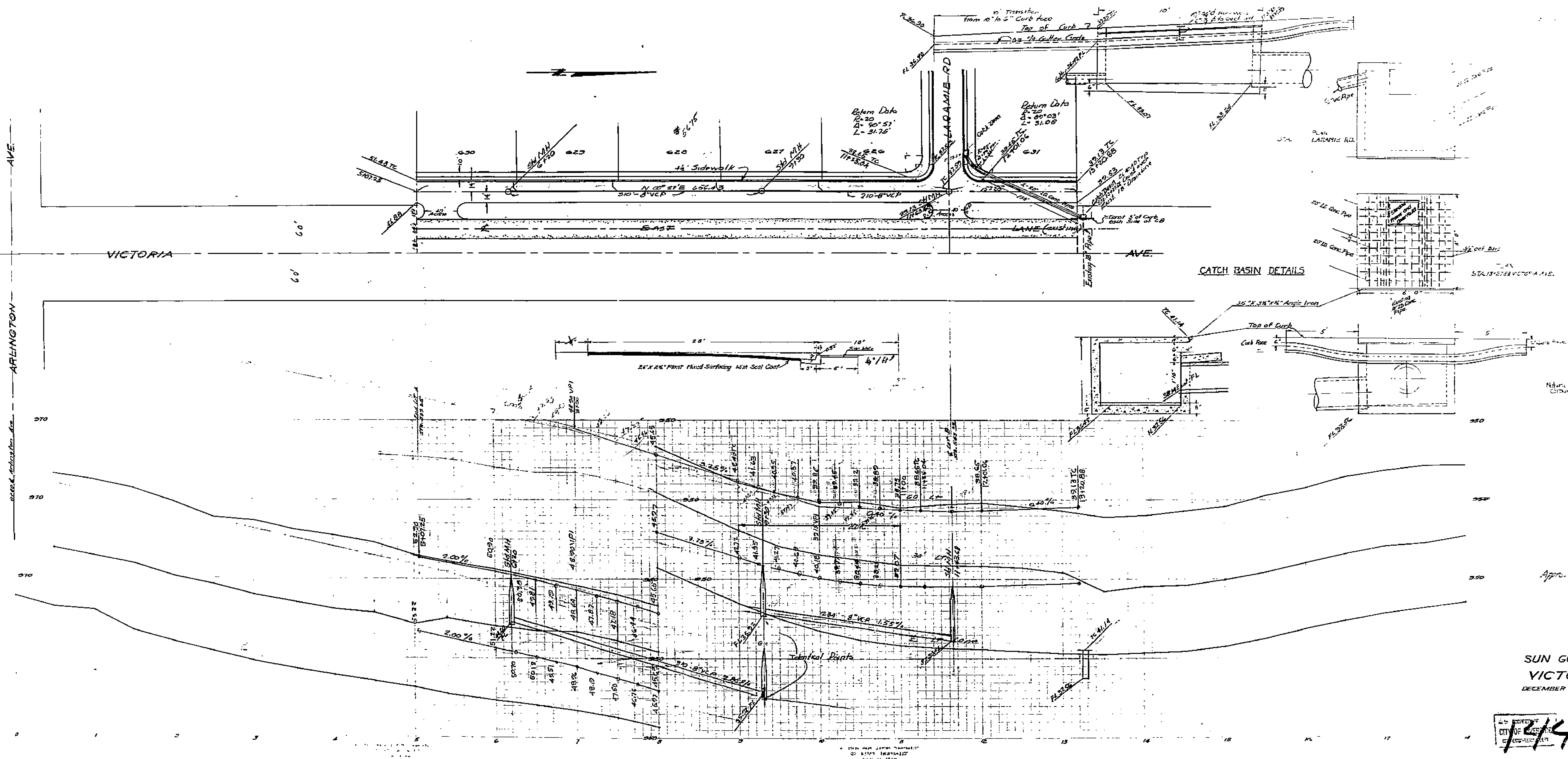
PLAN & PROFILE  
SUN GOLD TERRACE NO. 1449  
LARAMIE ROAD

DECEMBER 1953 J.F. DAVIDSON, C.E.  
SCALE - HOR - 1"=40'  
VERT - 1"=4'

MADE IN U.S.A. CLEARPRINT PAPER CO. CLEARPRINT PAPER CO. CLEARPRINT PAPER CO.

CITY OF RIVERSIDE  
ENGINEERING

CITY OF RIVERSIDE  
ENGINEERING



CATCH BASIN DETAILS

Approved by: *U. N. ...*  
Date: ...

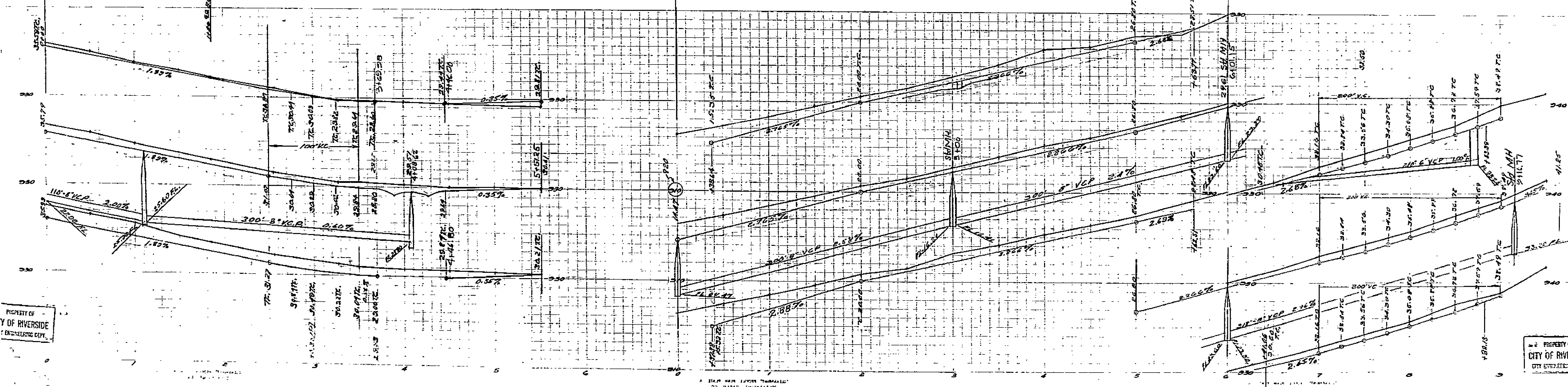
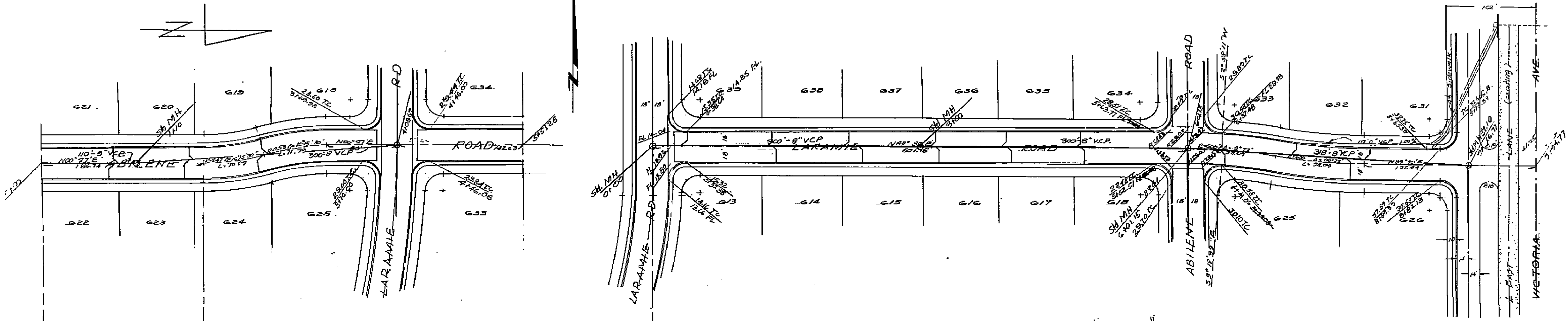
PLAN & PROFILE  
**SUN GOLD TERRACE N**  
**VICTORIA AVE.**  
 DECEMBER 1953 J.F. DAVIDSON, E.  
 SCALE  
 HORIZ. 1"=40'  
 VERT. 1"=4'

72/49

CITY OF RIVERSIDE  
ENGINEERING

PROPERTY OF  
CITY OF RIVERSIDE  
ENGINEERING DEPT.

PROPERTY OF  
CITY OF RIVERSIDE  
ENGINEERING DEPT.



Approved - *M. N. Irvine*  
City Engineer  
4-20-54

Approved by *M. N. Irvine*  
City Engineer  
4-20-54

PLAN & PROFILE  
SUN GOLD TERRACE N  
ABILENE RD - LARAMIE RD

DECEMBER 1953 J.F. DAVIDSON, C.E.

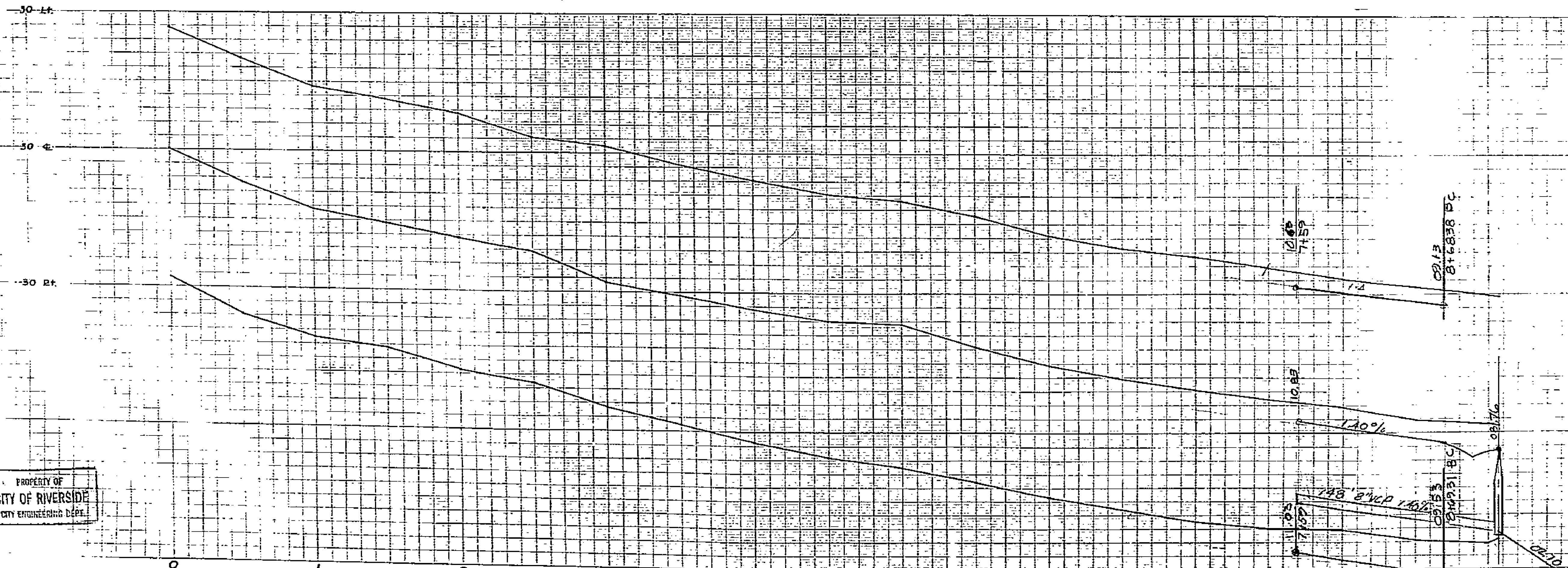
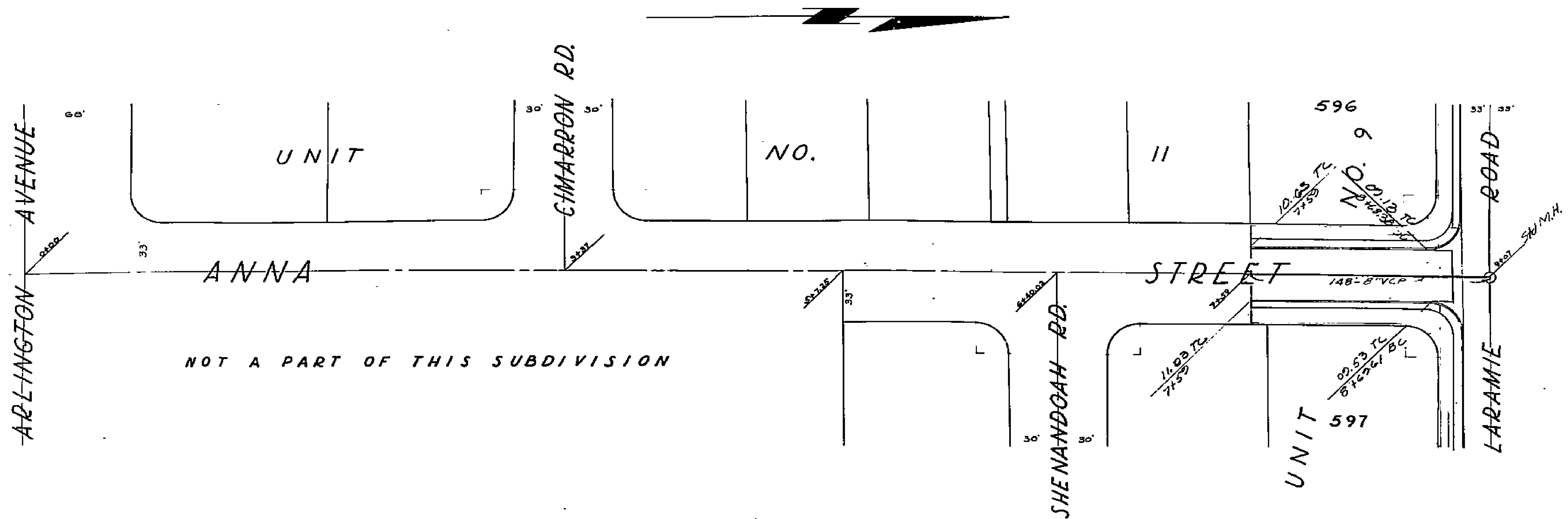
PROPERTY OF  
CITY OF RIVERSIDE  
ENGINEERING DEPT.

1449

PROPERTY OF  
CITY OF RIVERSIDE  
ENGINEERING DEPT.

PROPERTY OF  
CITY OF RIVERSIDE  
CITY ENGINEERING DEPT.

PROPERTY OF  
CITY OF RIVERSIDE  
CITY ENGINEERING DEPT.



Approved by *M. K. Swine* 4-20  
City Engineer

1449

PLAN & PROFILE  
SUN GOLD TERRACE NO.  
ANNA STREET

APRIL, 1954

U. F. DAVIDSON, C.E.

SCALE  
H&V  
V&H

PROPERTY OF  
CITY OF RIVERSIDE  
CITY ENGINEERING DEPT.

PROPERTY OF  
CITY OF RIVERSIDE  
CITY ENGINEERING DEPT.

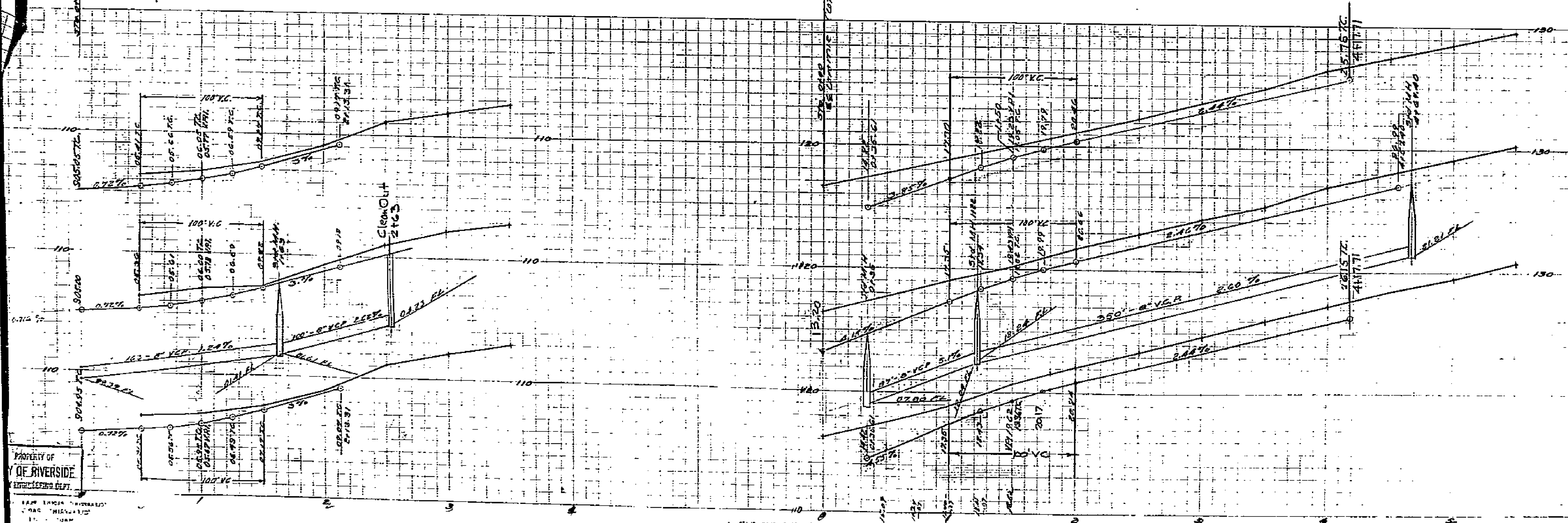
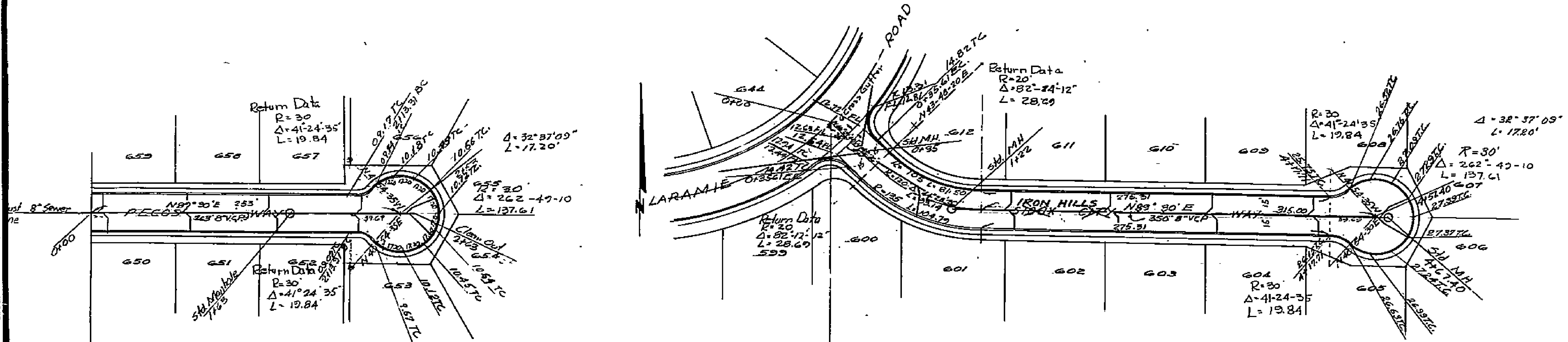
MADE IN U.S.A.  
"LITHOGRAPHED AND PRINTED BY  
"LITHOGRAPHIC PAPER CO.  
"LITHOGRAPHIC PAPER CO.  
"LITHOGRAPHIC PAPER CO.

MADE IN U.S.A.  
"LITHOGRAPHED AND PRINTED BY  
"LITHOGRAPHIC PAPER CO.  
"LITHOGRAPHIC PAPER CO.  
"LITHOGRAPHIC PAPER CO.

F.B. 48

PROPERTY OF  
CITY OF RIVERSIDE  
CITY ENGINEERING DEPT.

PROPERTY OF  
CITY OF RIVERSIDE  
CITY ENGINEERING DEPT.



Approved by M.H. Dwyer  
City Engineer  
Approved as M.H. Dwyer  
revised. City Engineer

PLAN & PROFILE  
SUN-GOLD TERRACE - NO. 51

PECOS WAY - SIOUX CITY WAY

DECEMBER 1953 J.F. DAVIDSON, CE

SCALE: HORIZ. 1"=40'  
VERT. 1"=4'

PROPERTY OF  
CITY OF RIVERSIDE  
CITY ENGINEERING DEPT.

PROPERTY OF  
CITY OF RIVERSIDE  
CITY ENGINEERING DEPT.

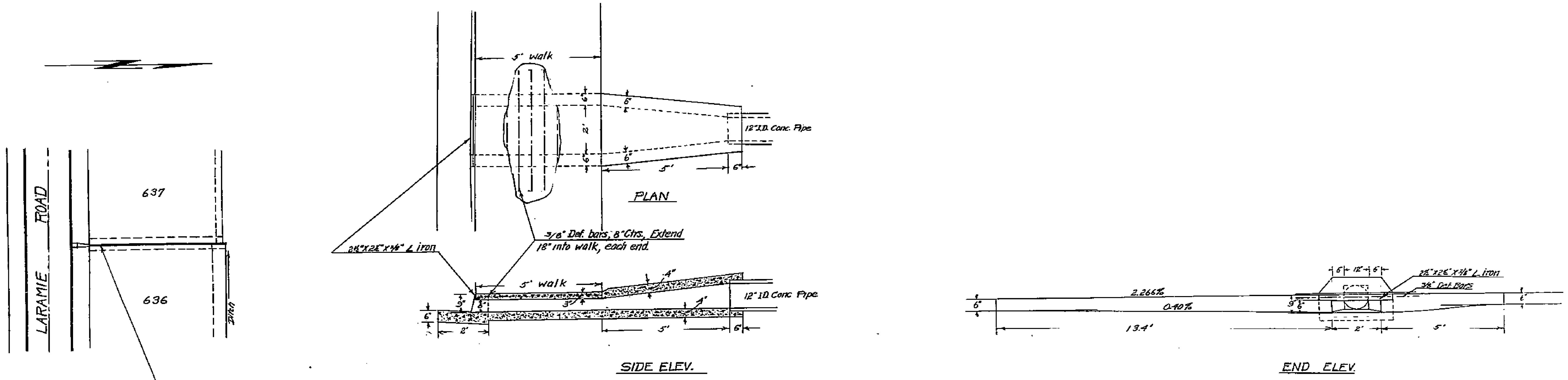
THIS PLAN SHOWS 'UNRECORDED'  
'AS IS' RECORDS  
AND IS NOT TO BE

THIS PLAN SHOWS 'UNRECORDED'  
'AS IS' RECORDS  
AND IS NOT TO BE

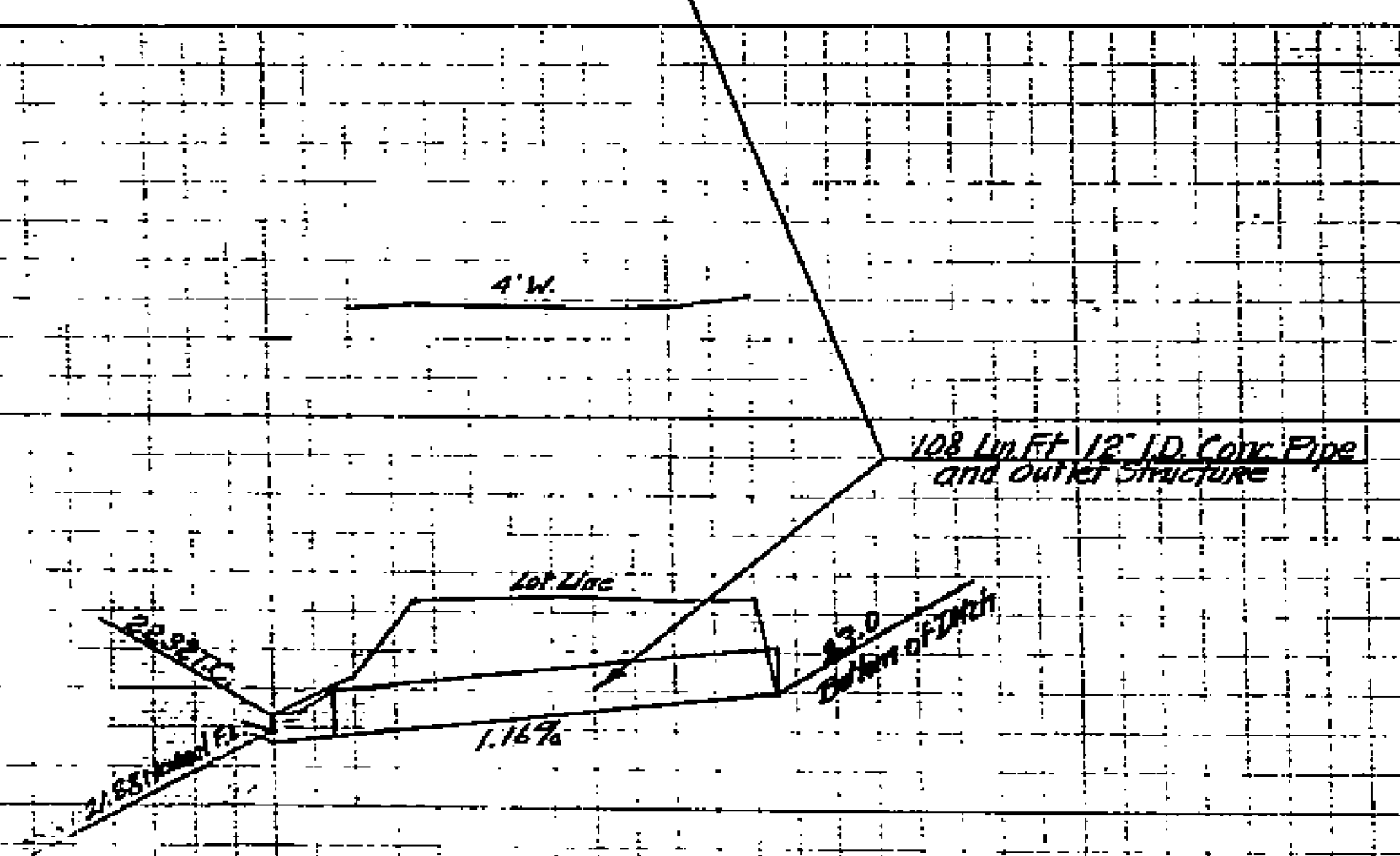
10,454-47

PROPERTY OF  
CITY OF RIVERSIDE  
CITY ENGINEERING DEPT.

PROPERTY OF  
CITY OF RIVERSIDE  
CITY ENGINEERING DEPT.



DETAILS OF OUTLET STRUCTURE  
Scale 1" = 2'



Approved *M. H. Davis*  
City Engineer

SEIN GOLD TERRACE NO. 9  
DRAIN CONNECTION  
FROM DITCH TO NORTH GUTTER, LARAMIE ROAD  
AUGUST 1954 J.F. DAVIDSON C.E.

SCALE:  
HORIZ. 1" = 40'  
VERT. 1" = 4'  
DETAILS 1" = 2'

1449

PROPERTY OF  
CITY OF RIVERSIDE  
CITY ENGINEERING DEPT.

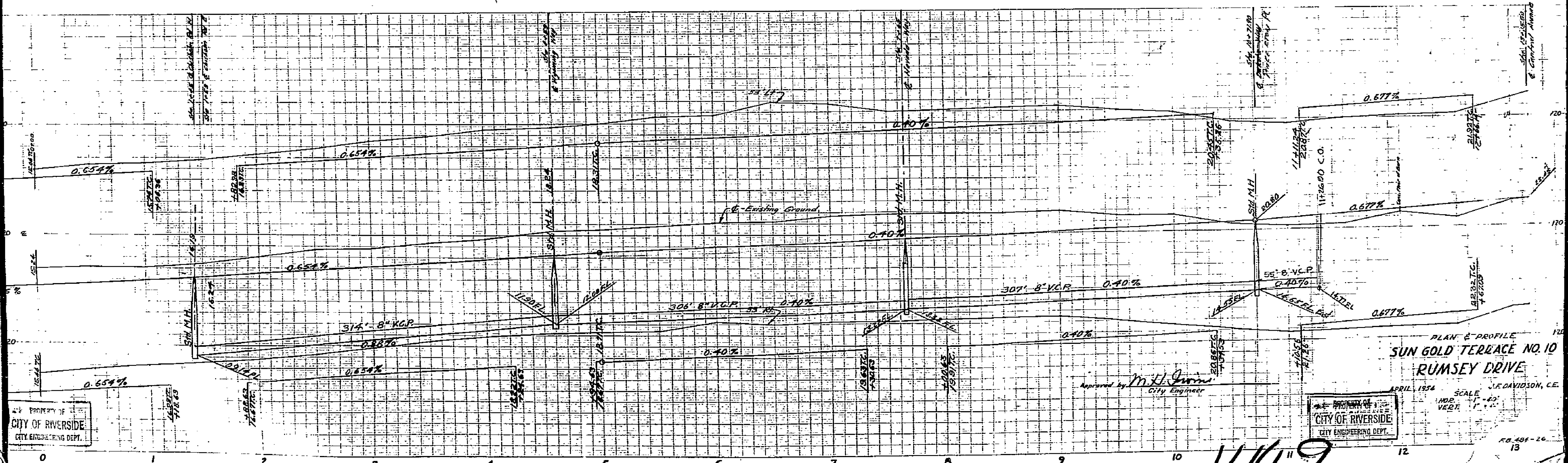
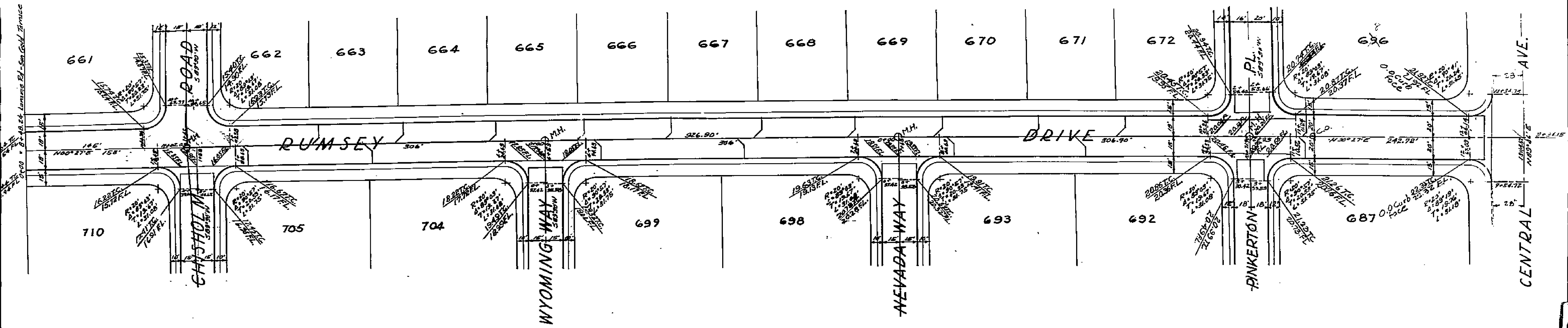
PROPERTY OF  
CITY OF RIVERSIDE  
CITY ENGINEERING DEPT.

EB. 487-46

PROPERTY OF  
CITY OF RIVERSIDE  
ENGINEERING DEPT.

PROPERTY OF  
CITY OF RIVERSIDE  
ENGINEERING DEPT.

SUN GOLD TERRACE - Sun Gold Terrace No. 10



PROPERTY OF  
CITY OF RIVERSIDE  
ENGINEERING DEPT.

PROPERTY OF  
CITY OF RIVERSIDE  
ENGINEERING DEPT.

Approved by *M. J. Quinn*  
City Engineer

PLAN & PROFILE  
SUN GOLD TERRACE NO. 10  
RUMSEY DRIVE

APRIL, 1954 J.E. DAVIDSON, C.E.

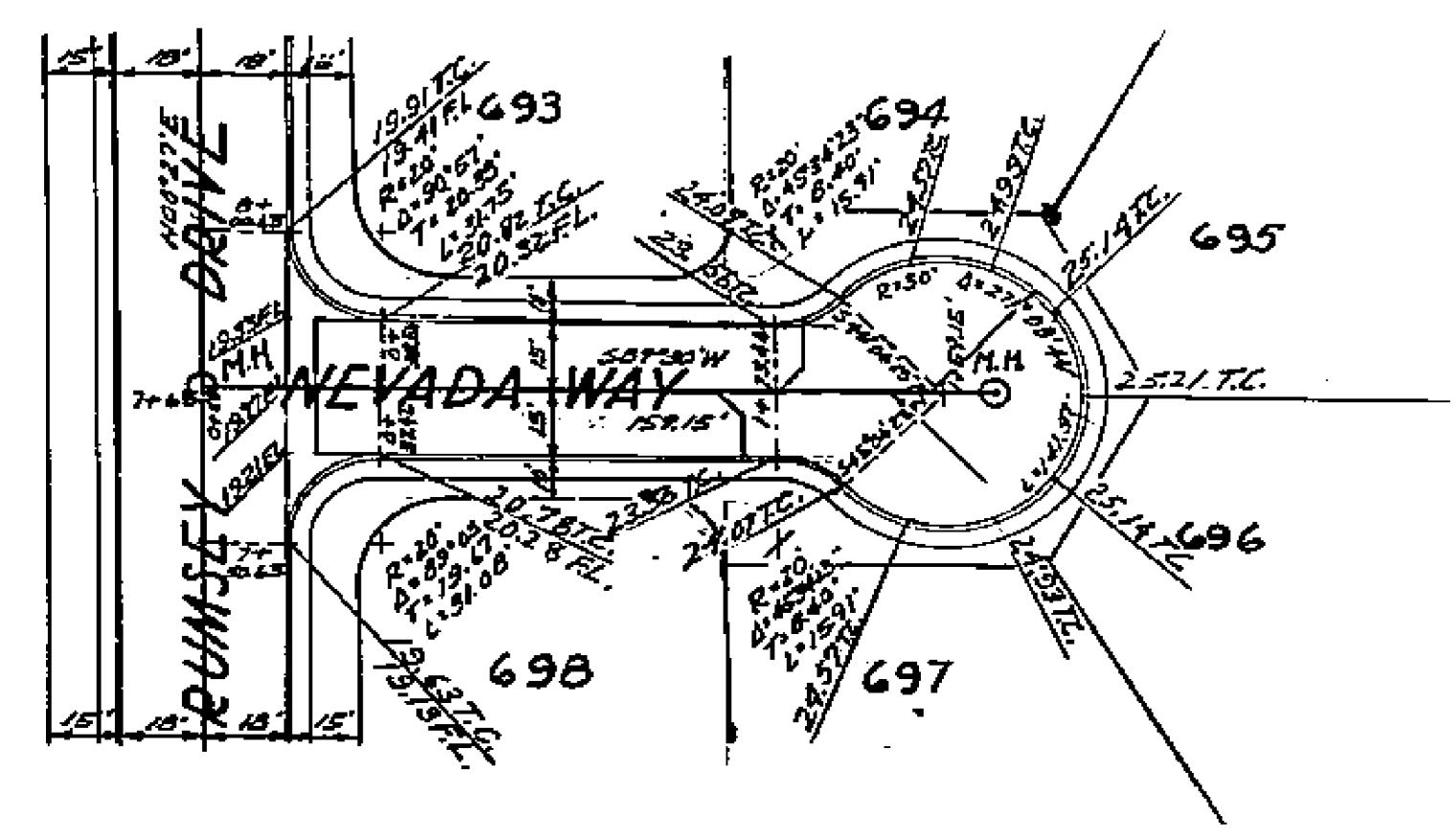
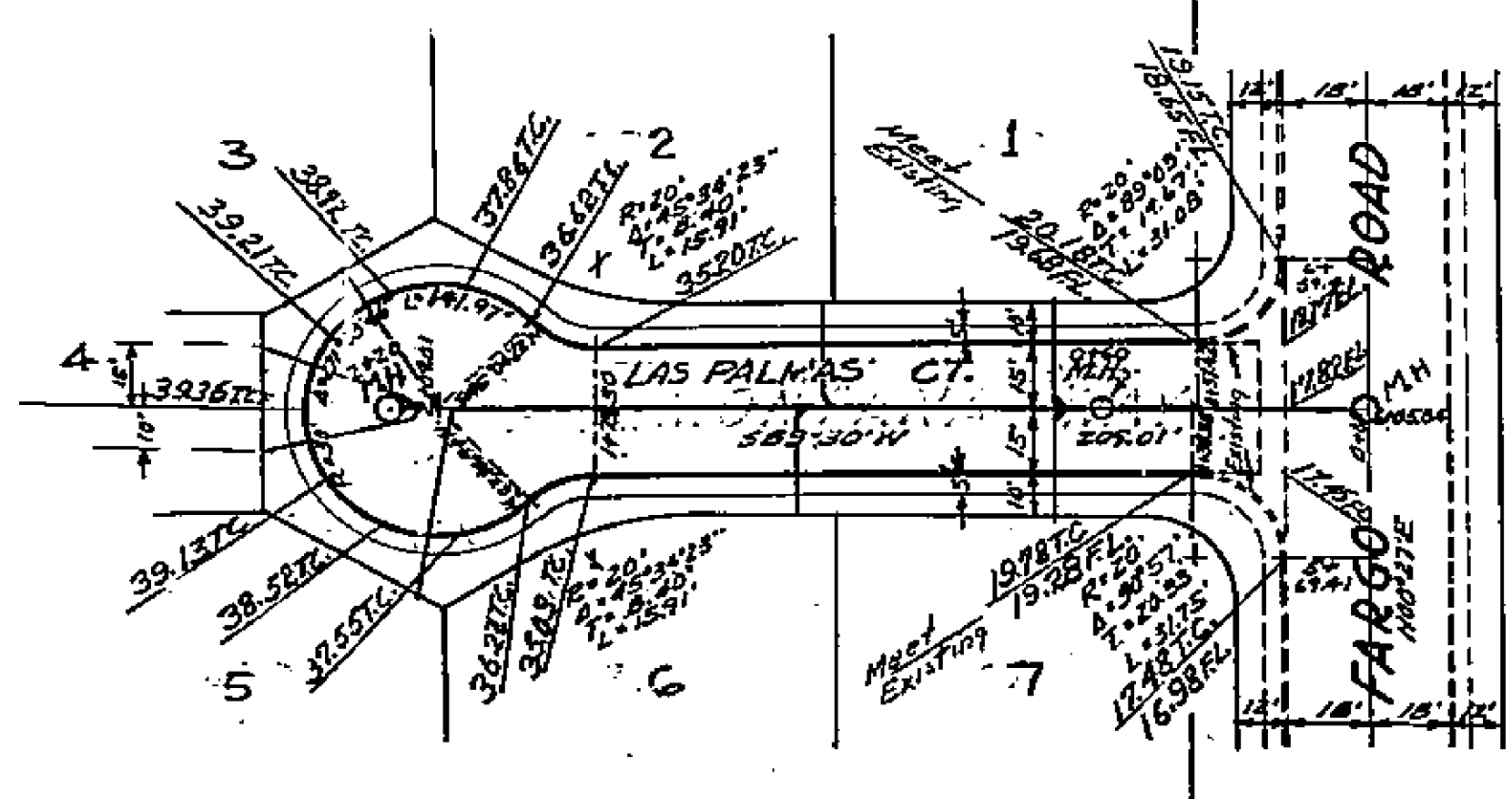
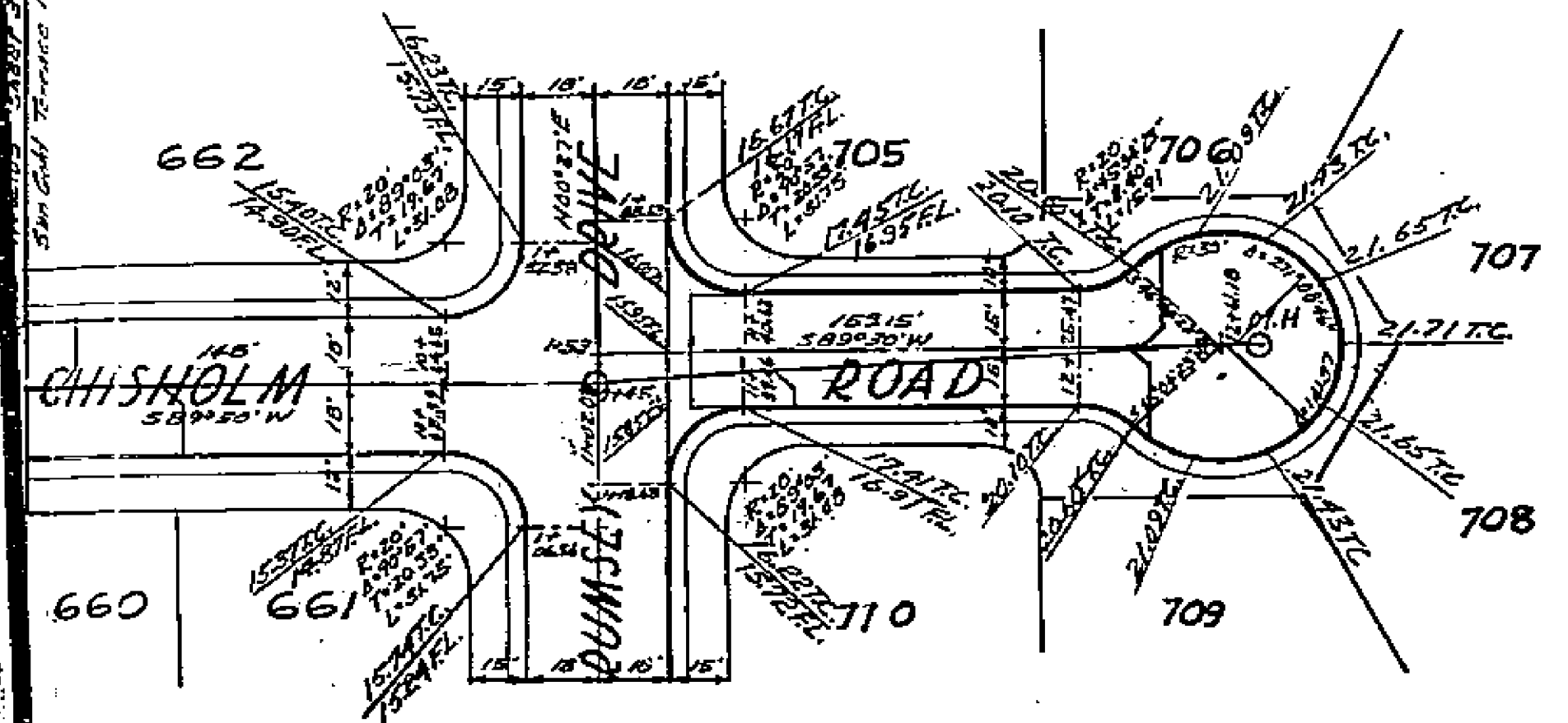
SCALE - 40'  
HORIZ. 1" = 40'  
VERT. 1" = 4'

1449

NO. 494-26  
13

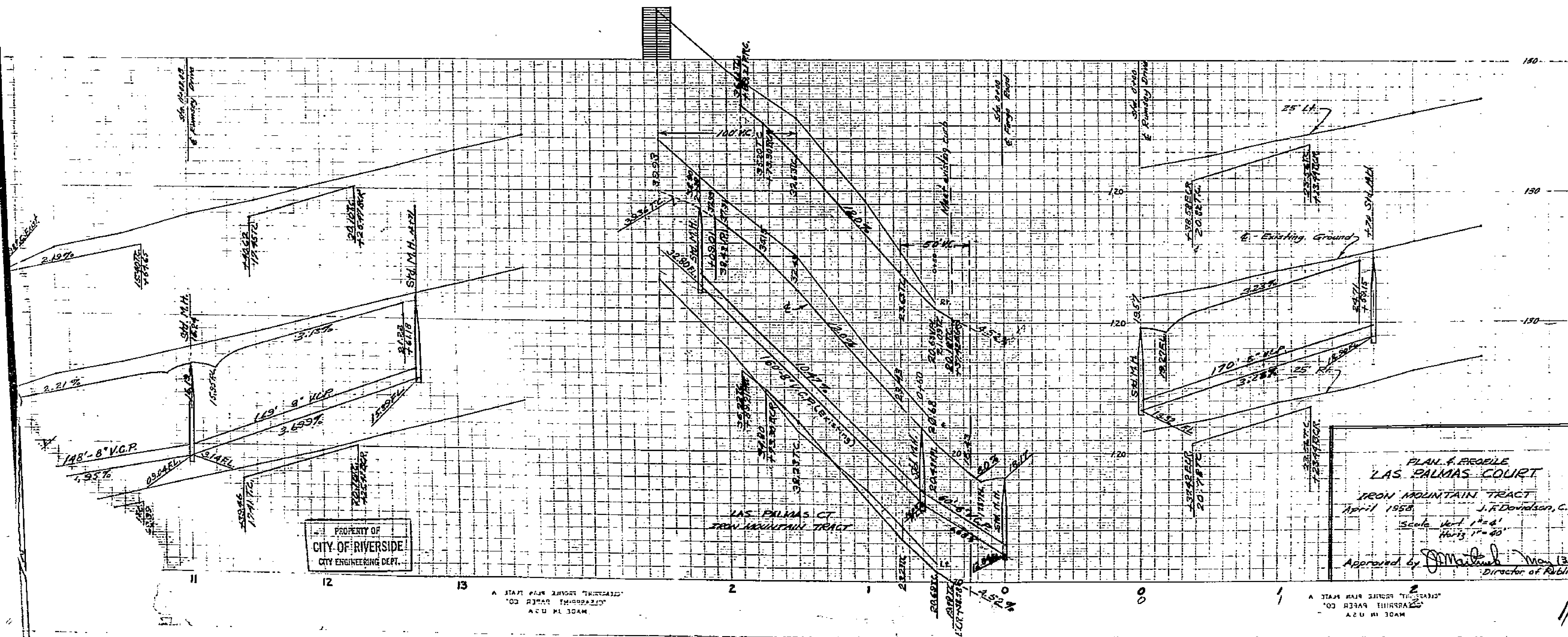
PROPERTY OF  
CITY OF RIVERSIDE  
CITY ENGINEERING DEPT.

PROPERTY OF  
CITY OF RIVERSIDE  
CITY ENGINEERING DEPT.



Limits of improvement  
IRON MOUNTAIN TRACT

Notes:  
Sewers are in place.  
Curb returns on Fargo Rd. are in place.  
Laterals plotted "as built" M.Bull 1-12-57



Revision Approved *M.H. Davison* Dec. 1957  
City Engineer

Approved by *M.H. Davison*  
City Engineer

PROPERTY OF  
CITY OF RIVERSIDE  
CITY ENGINEERING DEPT.

PLAN & PROFILE  
SUN GOLD TERRACE NO. 10  
CHISHOLM ROAD  
LAS PALMAS COURT  
NEVADA WAY

PLAN & PROFILE  
LAS PALMAS COURT  
IRON MOUNTAIN TRACT  
April 1958  
J.F. Davidson, C.E.  
Scale: Horiz. 1" = 40'  
Vert. 1" = 4'

APRIL, 1954 SCALE J.F. DAVIDSON, C.E.  
HORIZ. 1" = 40'  
VERT. 1" = 4'

Approved by *J. M. ...* Director of Public Works  
1958

PROPERTY OF  
CITY OF RIVERSIDE  
CITY ENGINEERING DEPT.

A STATE PLAN SHOWING THE LOCATION  
OF THE ROAD IMPROVEMENT  
AS OF 1958

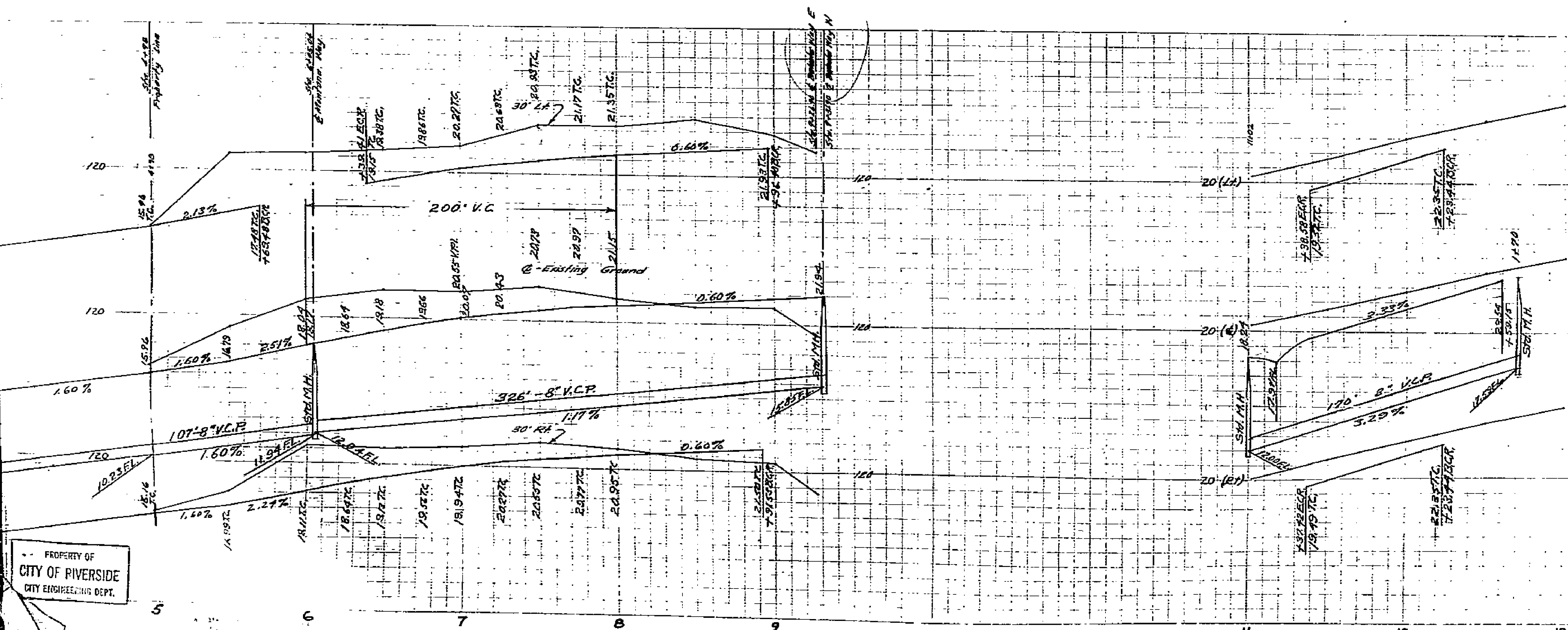
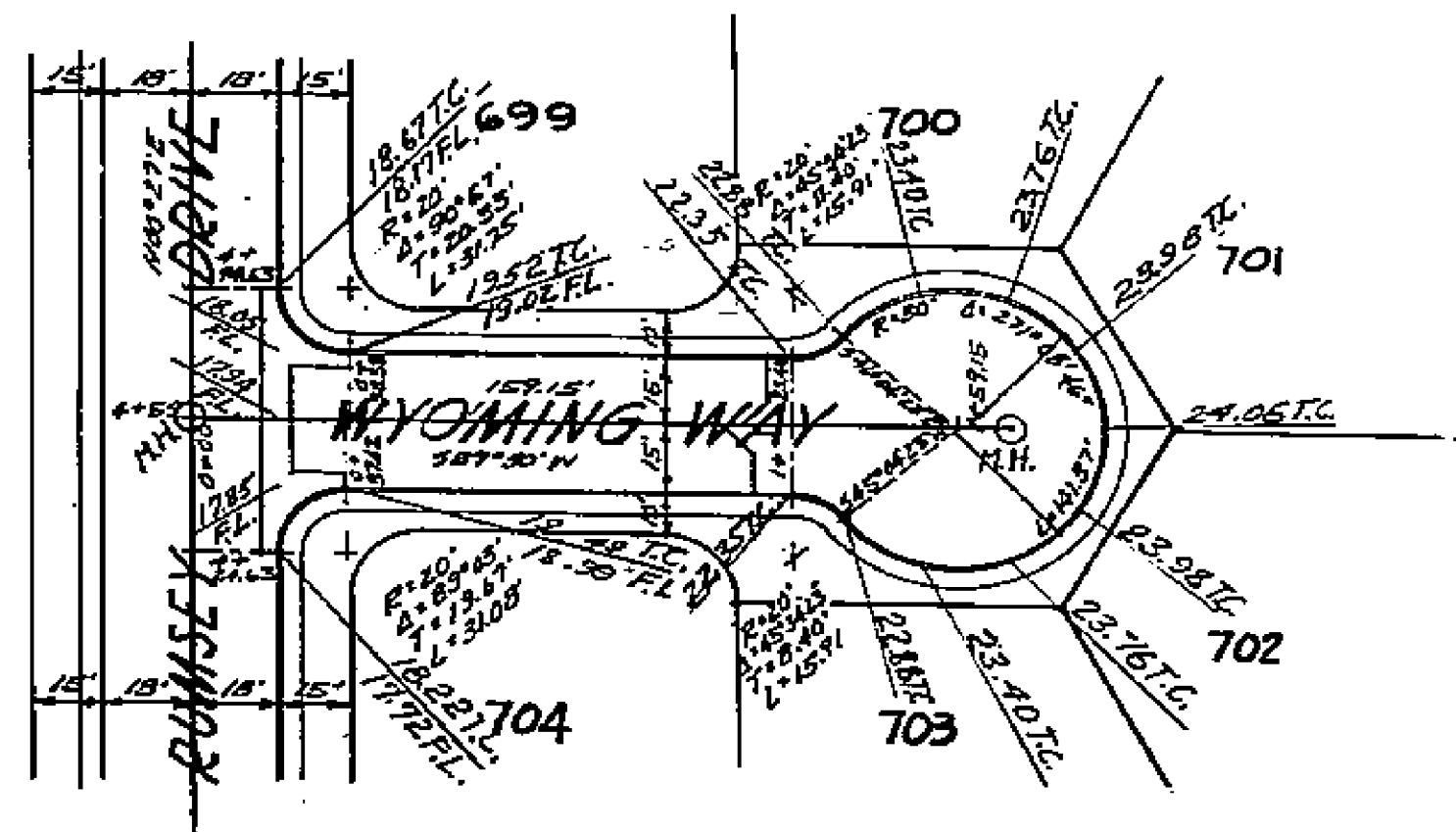
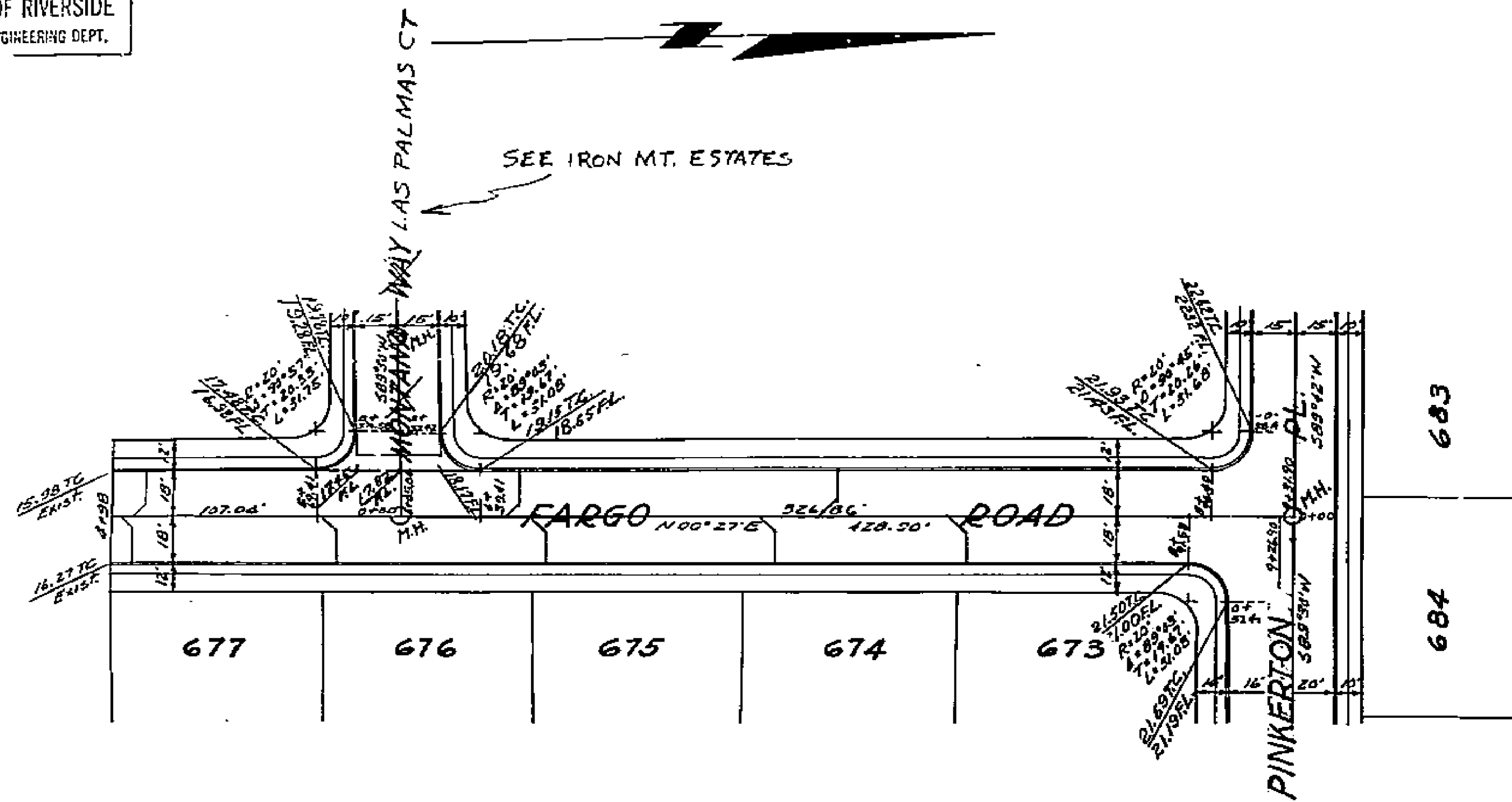
A STATE PLAN SHOWING THE LOCATION  
OF THE ROAD IMPROVEMENT  
AS OF 1958

1449



PROPERTY OF  
CITY OF RIVERSIDE  
CITY ENGINEERING DEPT.

SEE IRON MT. ESTATES



Revision Approved *M. H. Davison*  
City Engineer

Approved by *M. H. Davison*  
City Engineer

PLAN & PROFILE  
SUN GOLD TERRACE NO. 10  
FARGO ROAD  
WYOMING WAY  
APRIL, 1954 J. DAVIDSON, C.E.  
SCALE  
HOR. 1" = 40'  
VERT. 1" = 4'

PROPERTY OF  
CITY OF RIVERSIDE  
CITY ENGINEERING DEPT.

PROPERTY OF  
CITY OF RIVERSIDE  
CITY ENGINEERING DEPT.

FB. 404-36

1449

MADE IN U.S.A.  
CLEARING PAPER CO.  
CLEARING PAPER CO.

