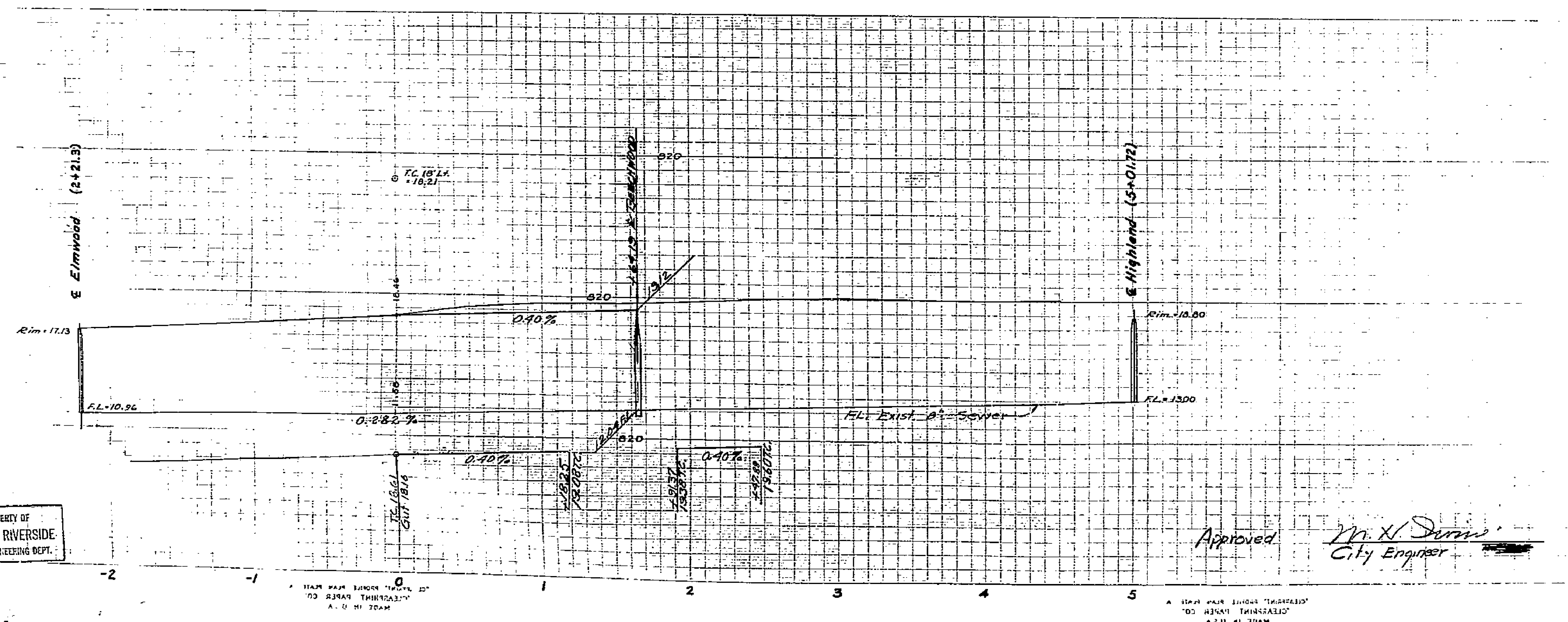
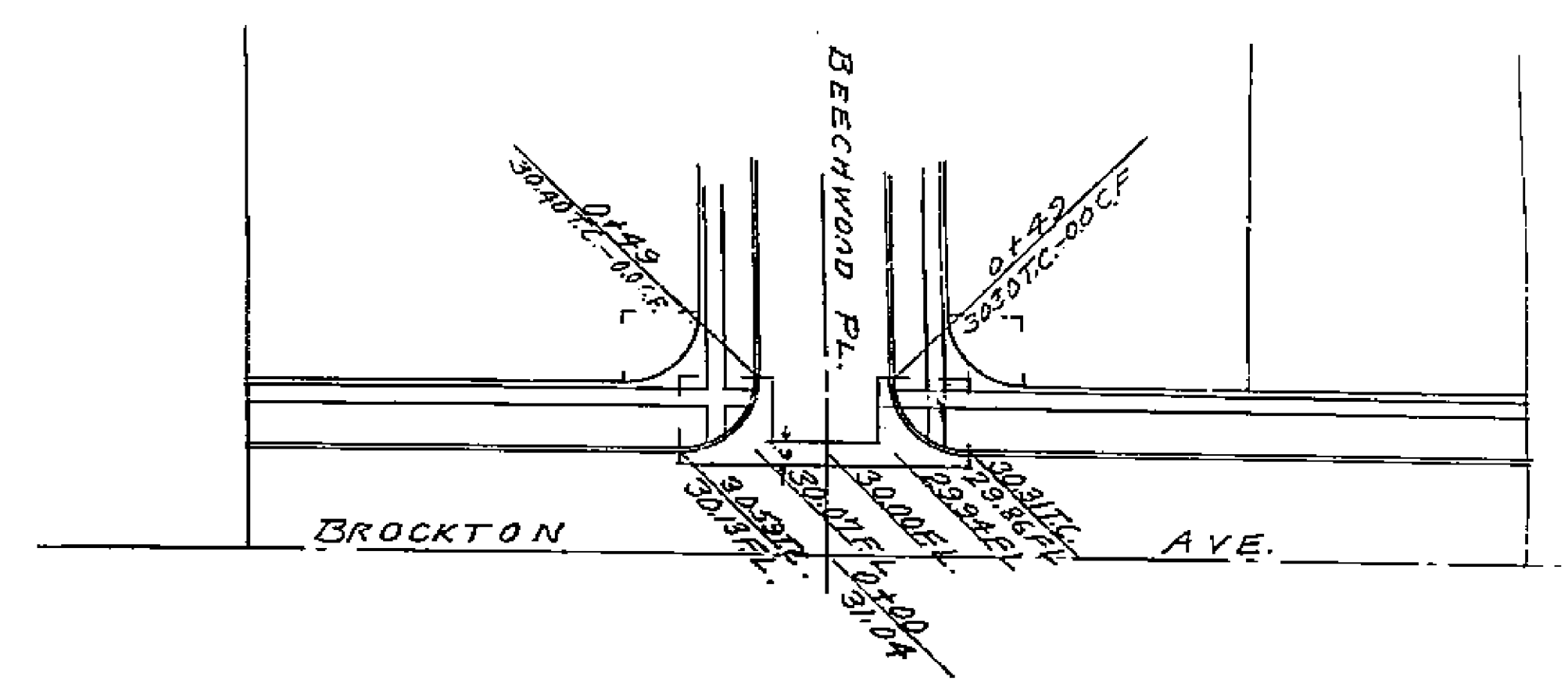
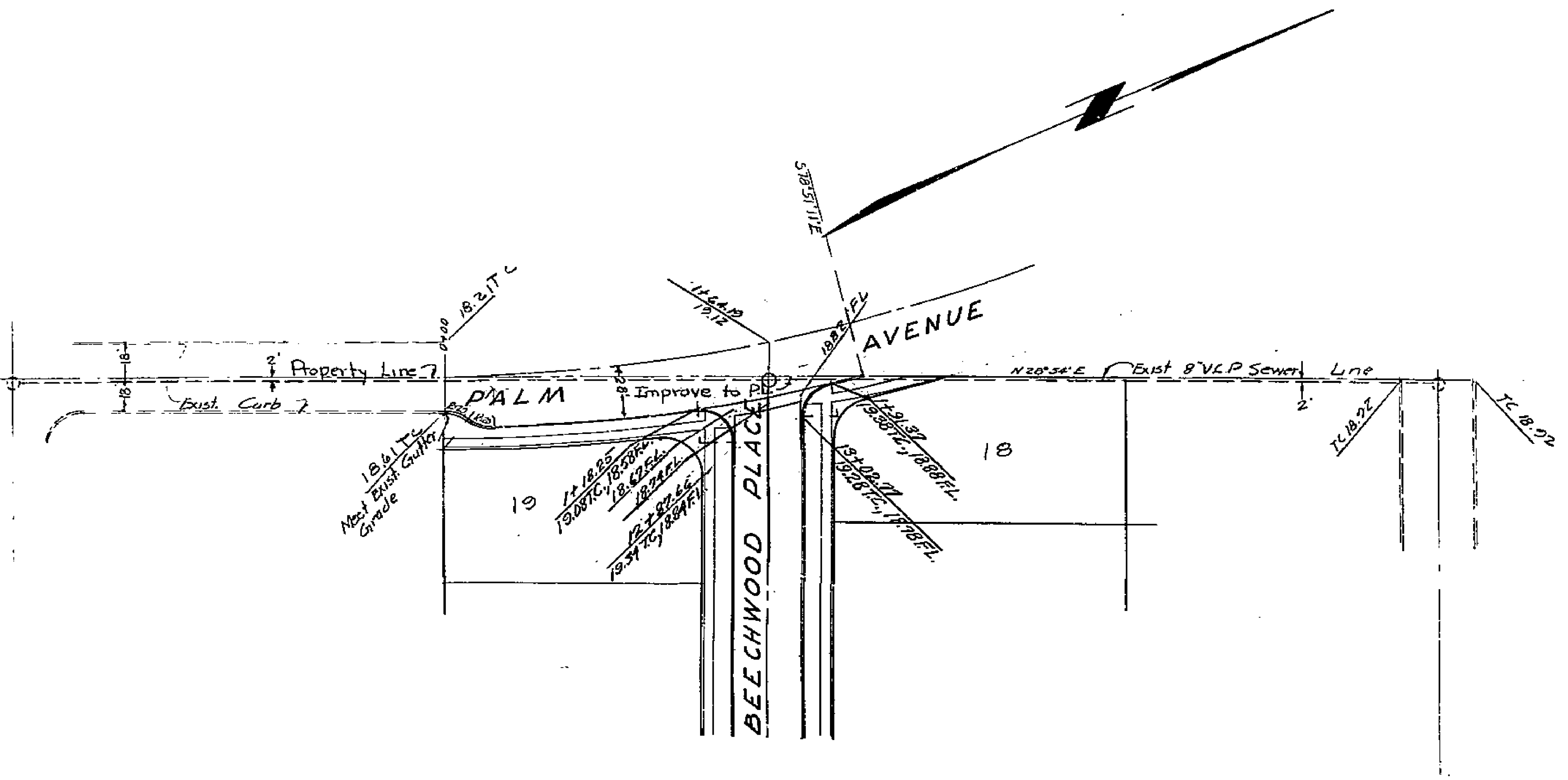


PROPERTY OF
CITY OF RIVERSIDE
CITY ENGINEERING DEPT.



PLAN & PROFILE
PALM AVENUE
BUTTERFIELD ESTATES
APRIL 1954 J. DAVIDSON
SCALE HDB 1"=10'
VERT 1"=2'

Approved *M. H. Davis*
City Engineer

1450

PROPERTY OF
CITY OF RIVERSIDE
CITY ENGINEERING DEPT.

MADE IN U.S.A. CIVIL ENGINEERING PAPER CO. 112 N. W. 11th St. Miami, Fla.