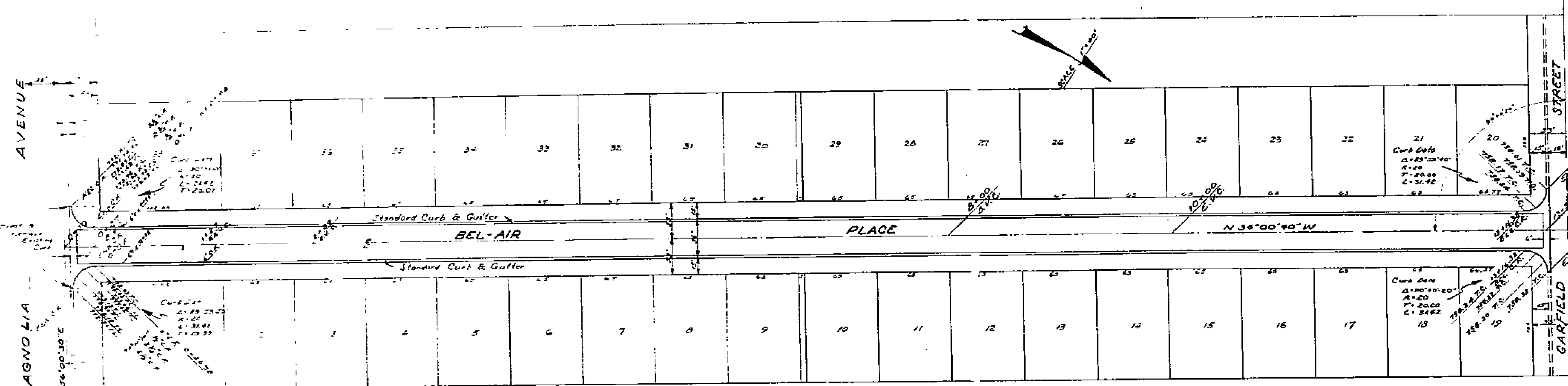


CITY OF RIVERSIDE

CITY OF RIVERSIDE



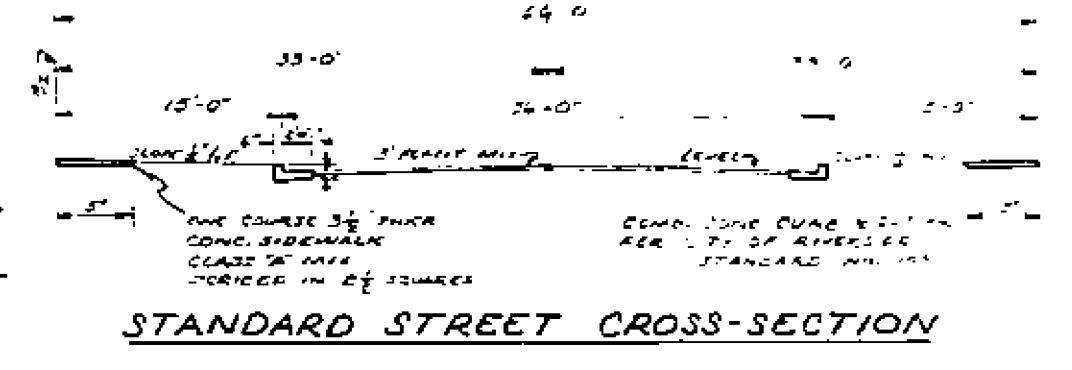
STREET PLANS AND PROFILES OF BEL-AIR SQUARE

BEL-AIR PLACE
GARFIELD STREET

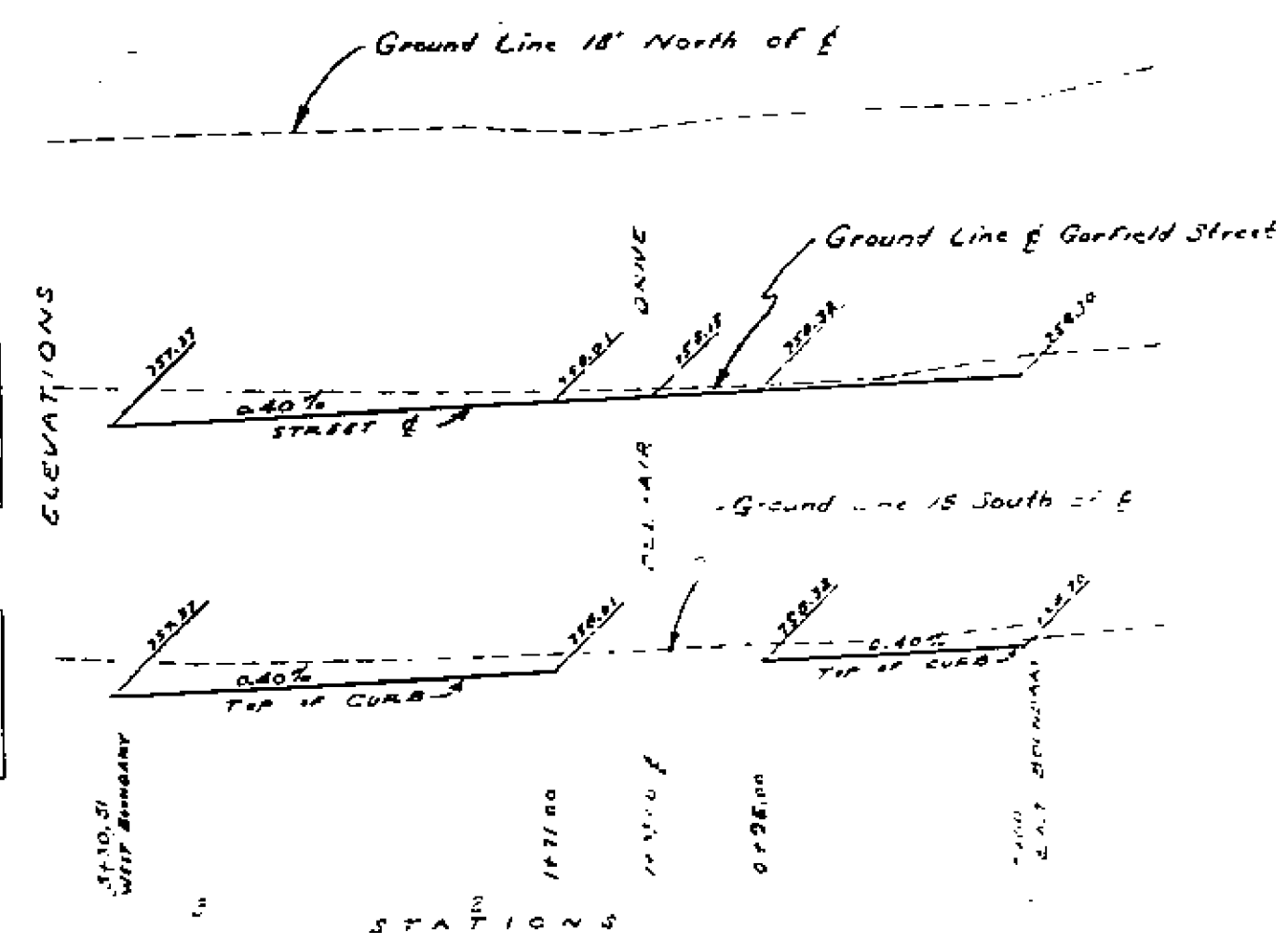
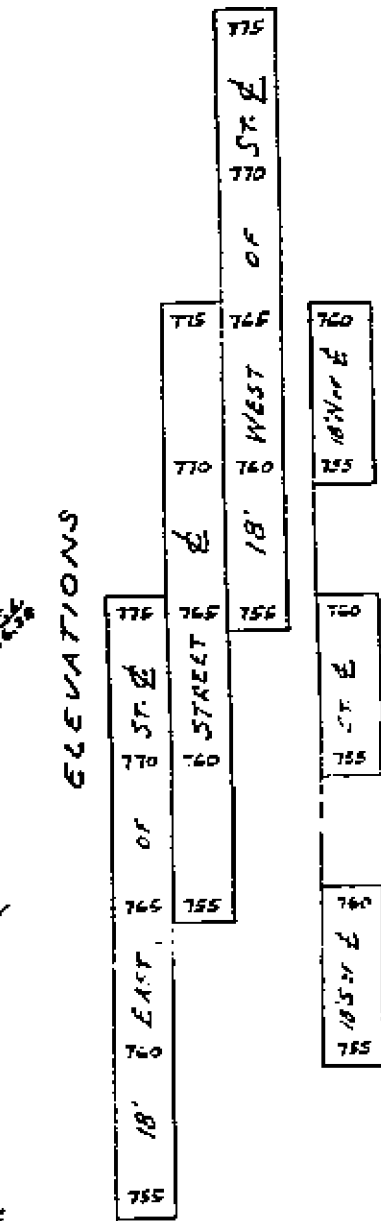
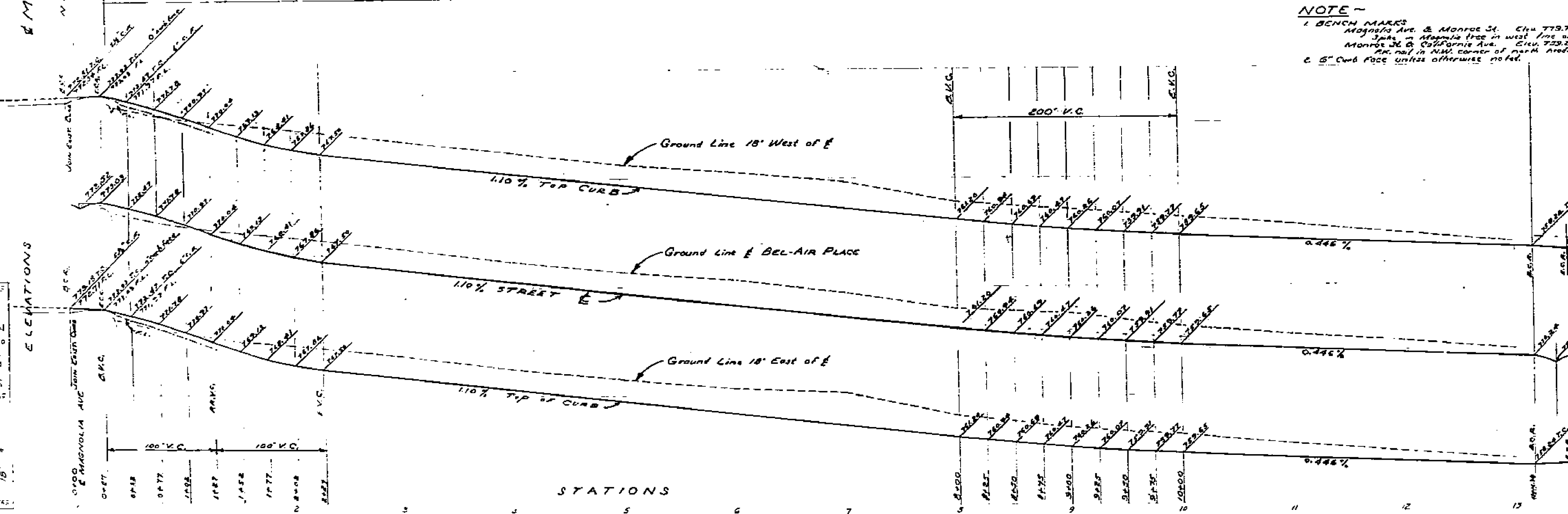
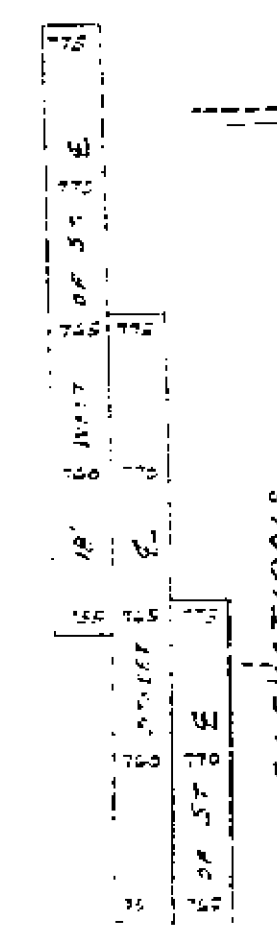
ALBERT A. WOOD ASSOCIATES
CIVIL ENGINEERS
RIVERSIDE
JANUARY 1954

Approved *M. V. Quinn* 1954
SILLEY
City Engineer, City of Riverside

NOTE -
1. BENCH MARKS
Magnolia Ave. & Monroe St. Elev. 773.73
Garfield St. & Magnolia Ave. Elev. 773.25
Monroe St. & California Ave. Elev. 773.25
All other in 100' corner of plan's perimeter
2. 5" Curb Face unless otherwise noted.



GARFIELD STREET
BEL-AIR PLACE



CITY OF RIVERSIDE

CITY OF RIVERSIDE