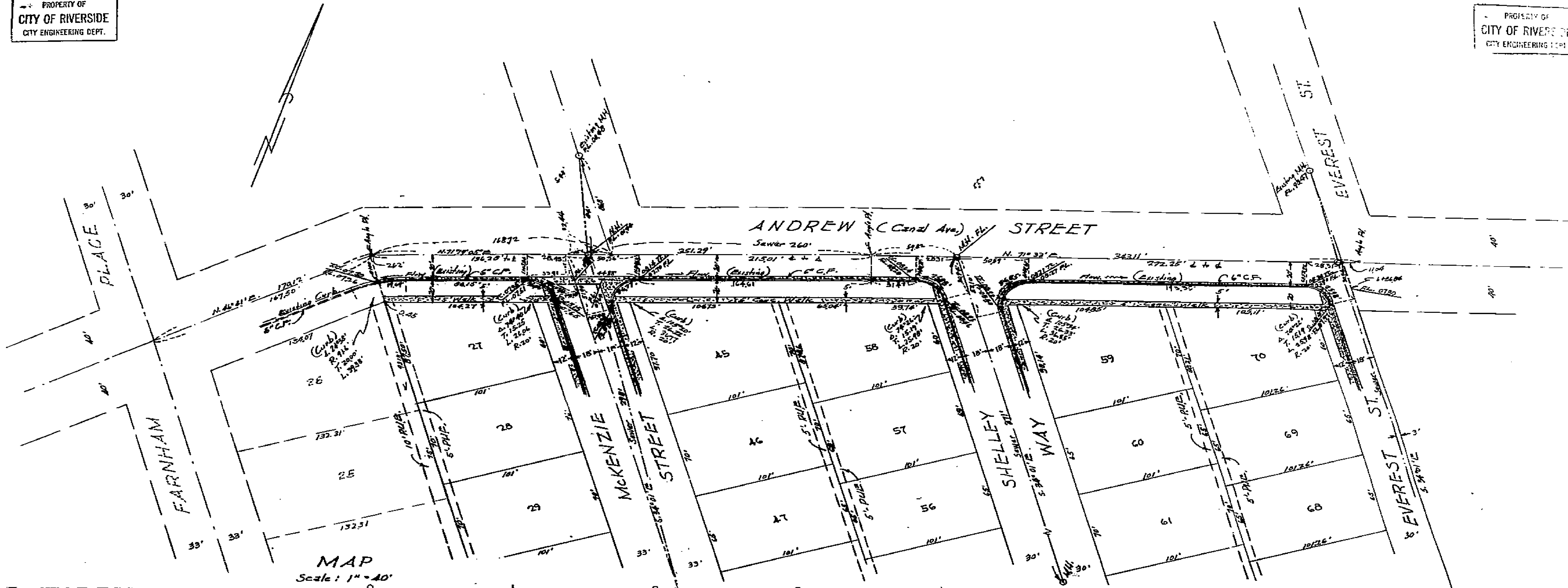
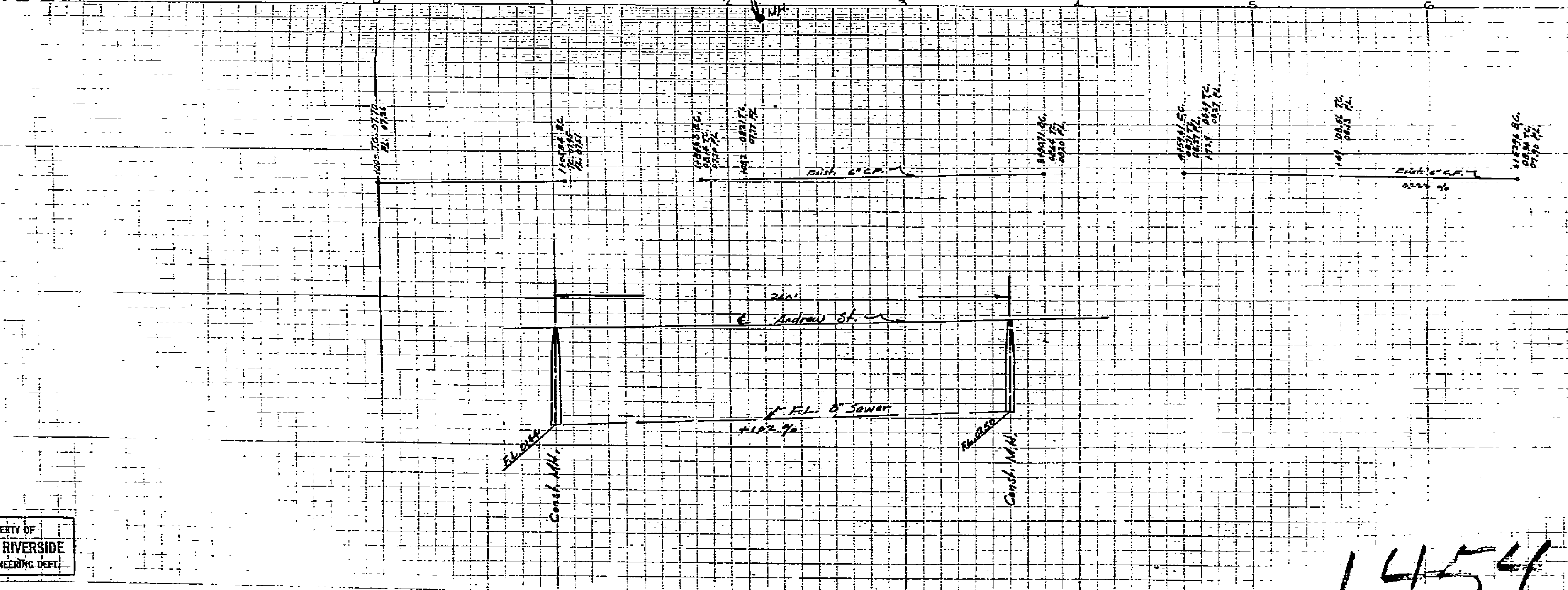


PROPERTY OF  
CITY OF RIVERSIDE  
CITY ENGINEERING DEPT.

PROPERTY OF  
CITY OF RIVERSIDE  
CITY ENGINEERING DEPT.



B.M.  
Spk in Euc. tree N.E. Cor. Andrew St.  
& Farnham Pl.  
Elev. 807.88.



LA HACIENDA RANCHO  
TRACT NO. 2  
PLAN & PROFILE  
April, 1954  
Scale: Horiz. 1" = 40'  
Vert. 1" = 4'  
Donald J. McKee, Lic. Surveyor

Approved: 5-13-1954  
M. J. Sullivan  
M. J. Sullivan, City Engineer  
Riverside, Calif.

PROPERTY OF  
CITY OF RIVERSIDE  
CITY ENGINEERING DEPT.

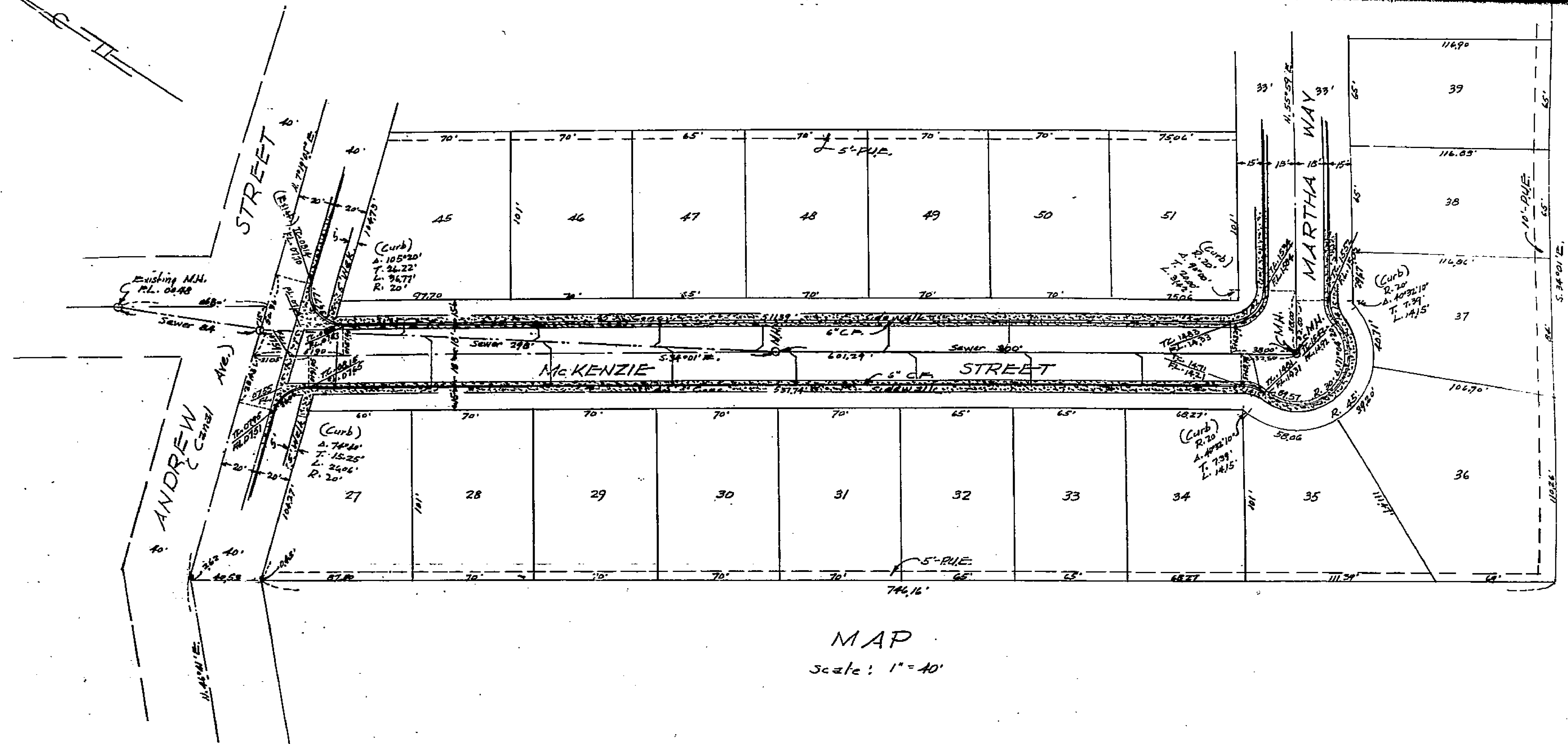
PROPERTY OF  
CITY OF RIVERSIDE  
CITY ENGINEERING DEPT.

1454

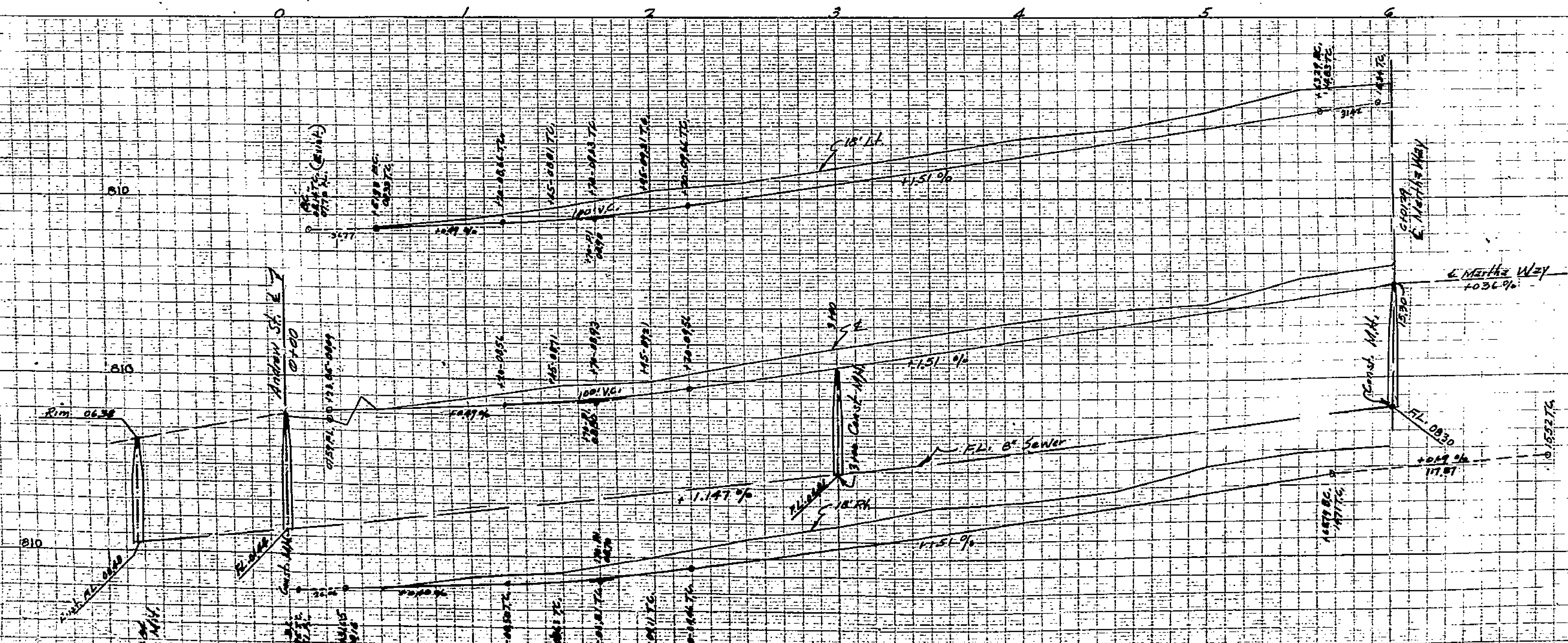
MADE IN U.S.A.

MADE IN U.S.A.

PROPERTY OF  
CITY OF RIVERSIDE  
CITY ENGINEERING DEPT.



MAP  
Scale: 1" = 40'



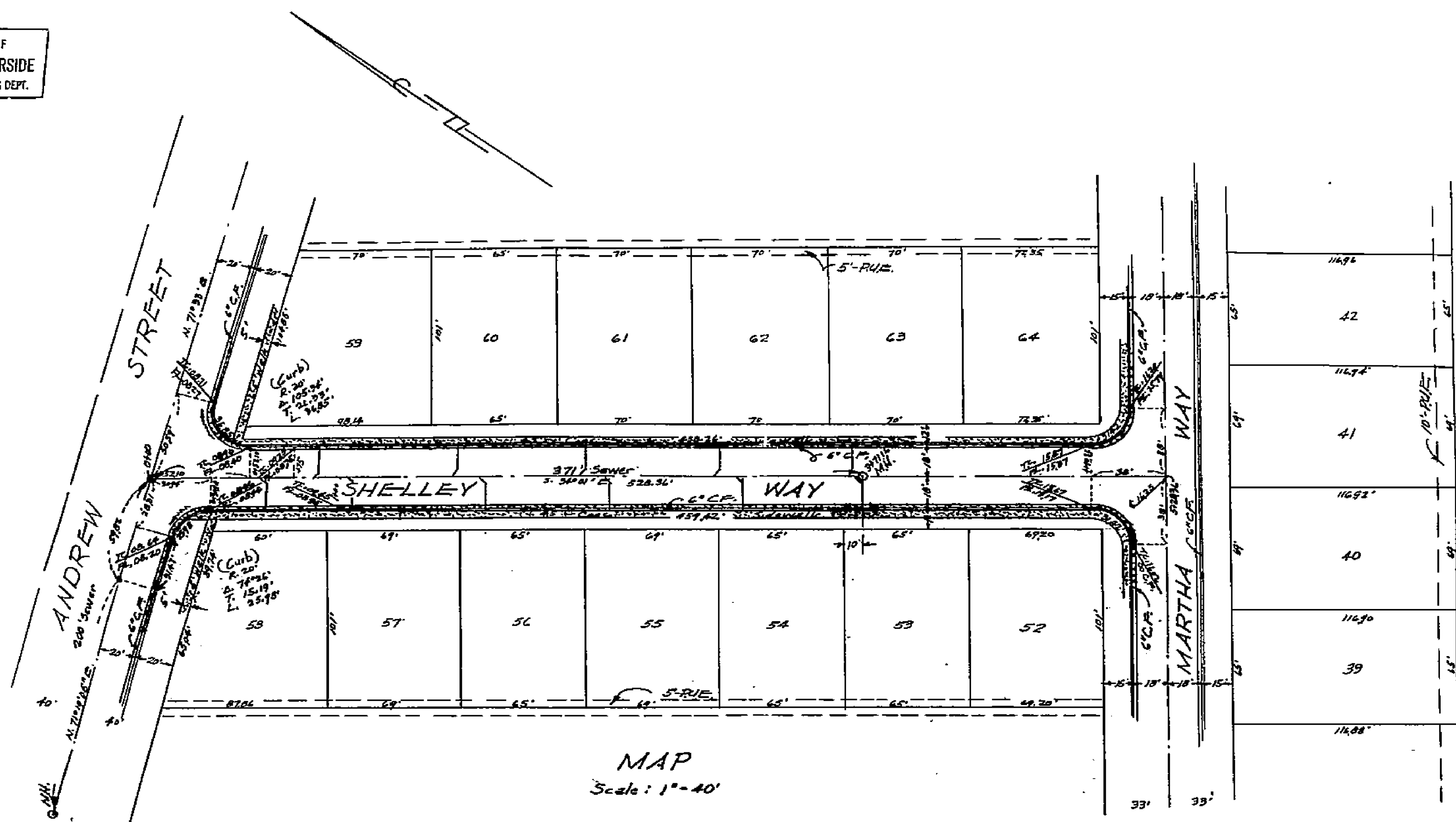
LA HACIENDA RANCHO  
TRACT NO. 2  
PLAN & PROFILE  
April, 1954  
Scale: Horiz. 1" = 40'  
Vert. 1" = 10'  
Donald J. McKee, Lic. Surveyor.

Approved 5/13 1954  
M. H. Irvine  
City Engineer  
Riverside, Calif.

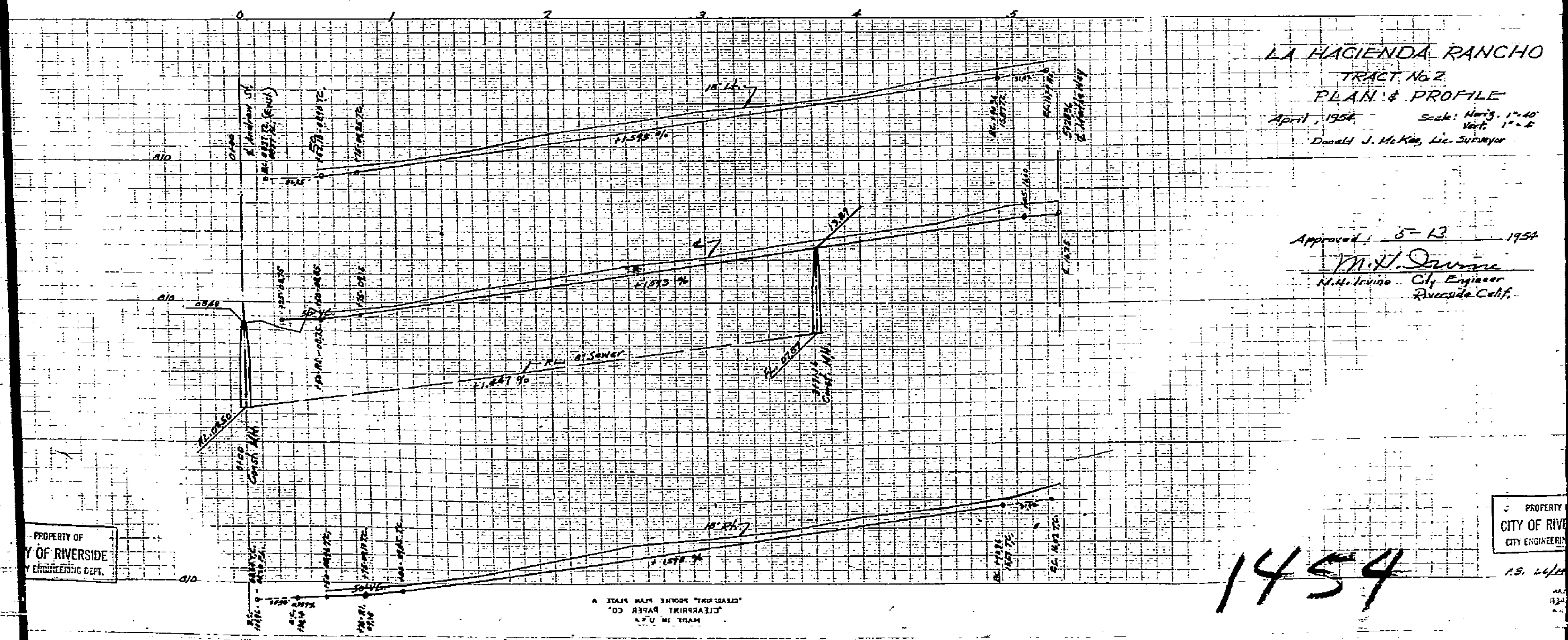
PROPERTY OF

PROPERTY OF  
CITY OF RIVERSIDE  
CITY ENGINEERING DEPT.

PROPERTY OF  
CITY OF RIVERSIDE  
CITY ENGINEERING DEPT.



11496'	42	15'
11694'	41	15'
11692'	40	15'
11690'	39	15'
11688'		15'



PROPERTY OF  
CITY OF RIVERSIDE  
CITY ENGINEERING DEPT.

PROPERTY OF  
CITY OF RIVERSIDE  
CITY ENGINEERING DEPT.

1454

MADE IN U.S.A.  
CLEARPRINT PAPER CO.  
CREATING, PRINTING, REPRODUCING PLANS