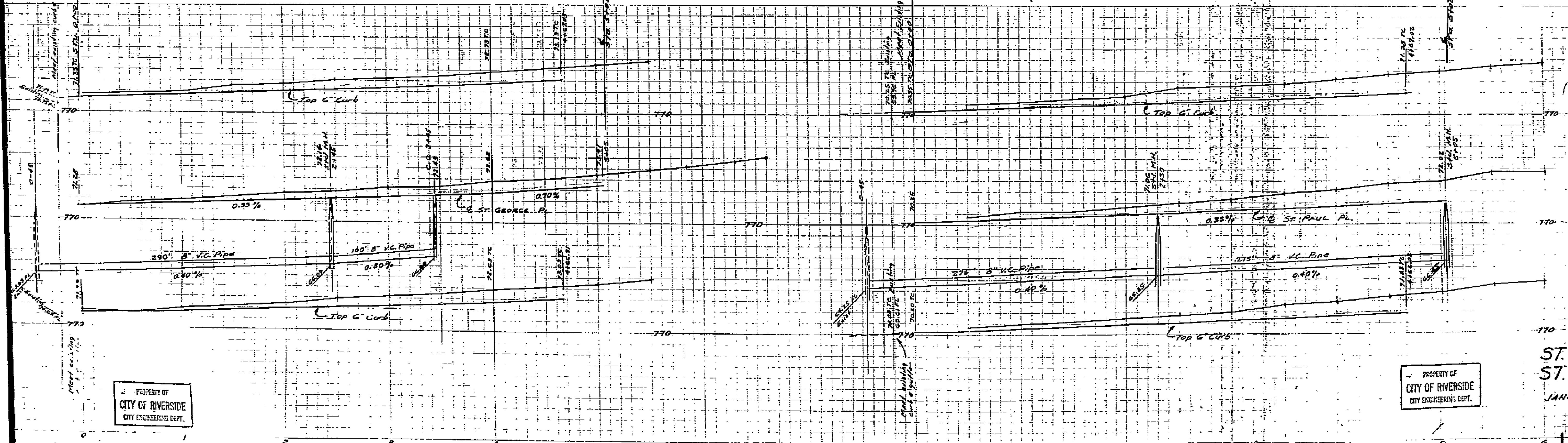
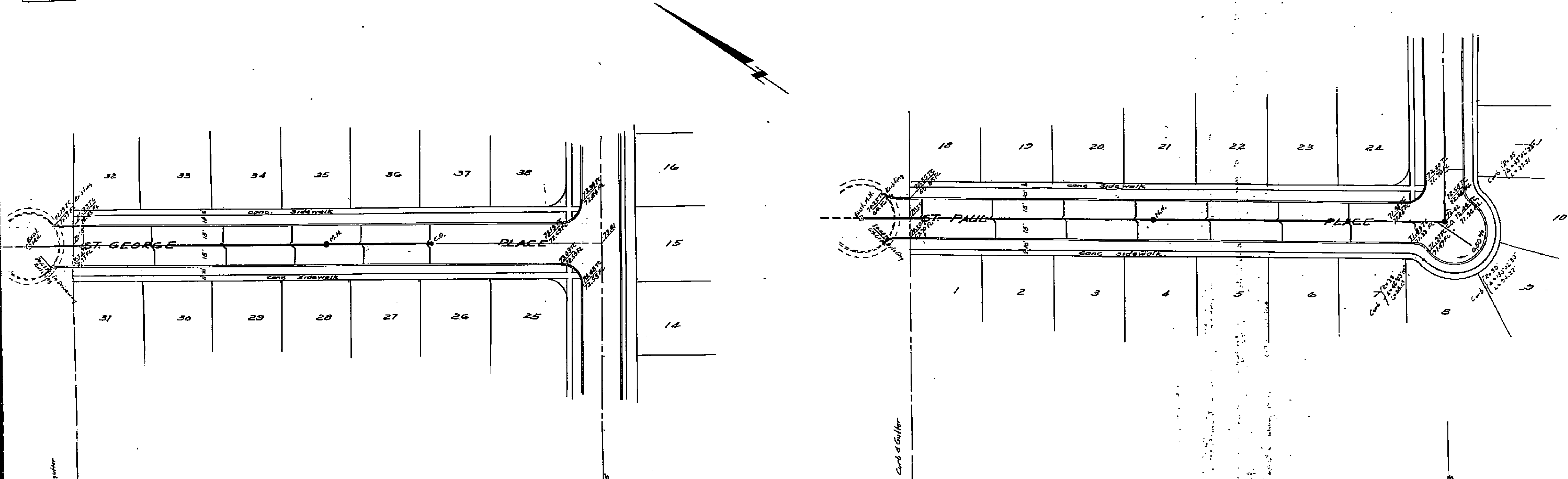


PROPERTY OF
CITY OF RIVERSIDE
CITY ENGINEERING DEPT.

PROPERTY OF
CITY OF RIVERSIDE
CITY ENGINEERING DEPT.



B.M. - Spike in lead in S.W. corner returns California and St. Paul. Elev. 768.28

Approved *M.K. Quinn*
1-29-54 City Engineer

Revised 2-15-54
Approved *M.W. Swine*
City Engineer

PLAN & PROFILE
ST. PAUL PARK
ST. PAUL PL. -
ST. GEORGE PL.

JANUARY 1954 J.F. DAVIDSON

SCALE
HORIZ. 1"=40'
VERT. 1"=4'

1458

PROPERTY OF
CITY OF RIVERSIDE
CITY ENGINEERING DEPT.

PROPERTY OF
CITY OF RIVERSIDE
CITY ENGINEERING DEPT.

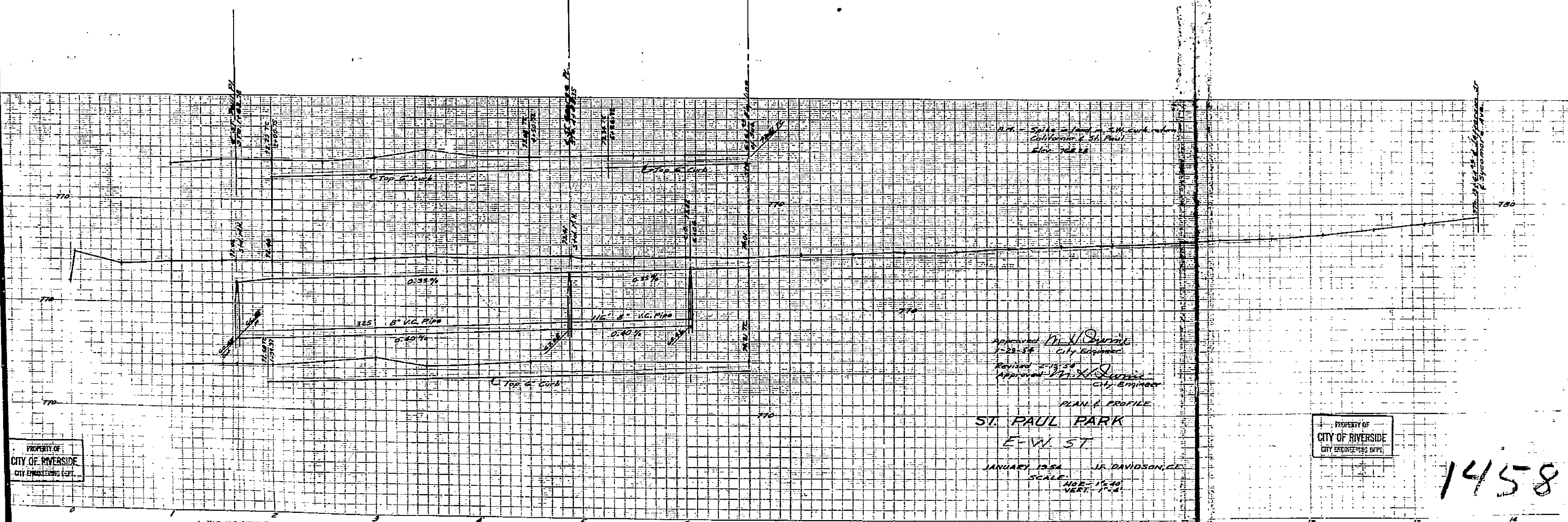
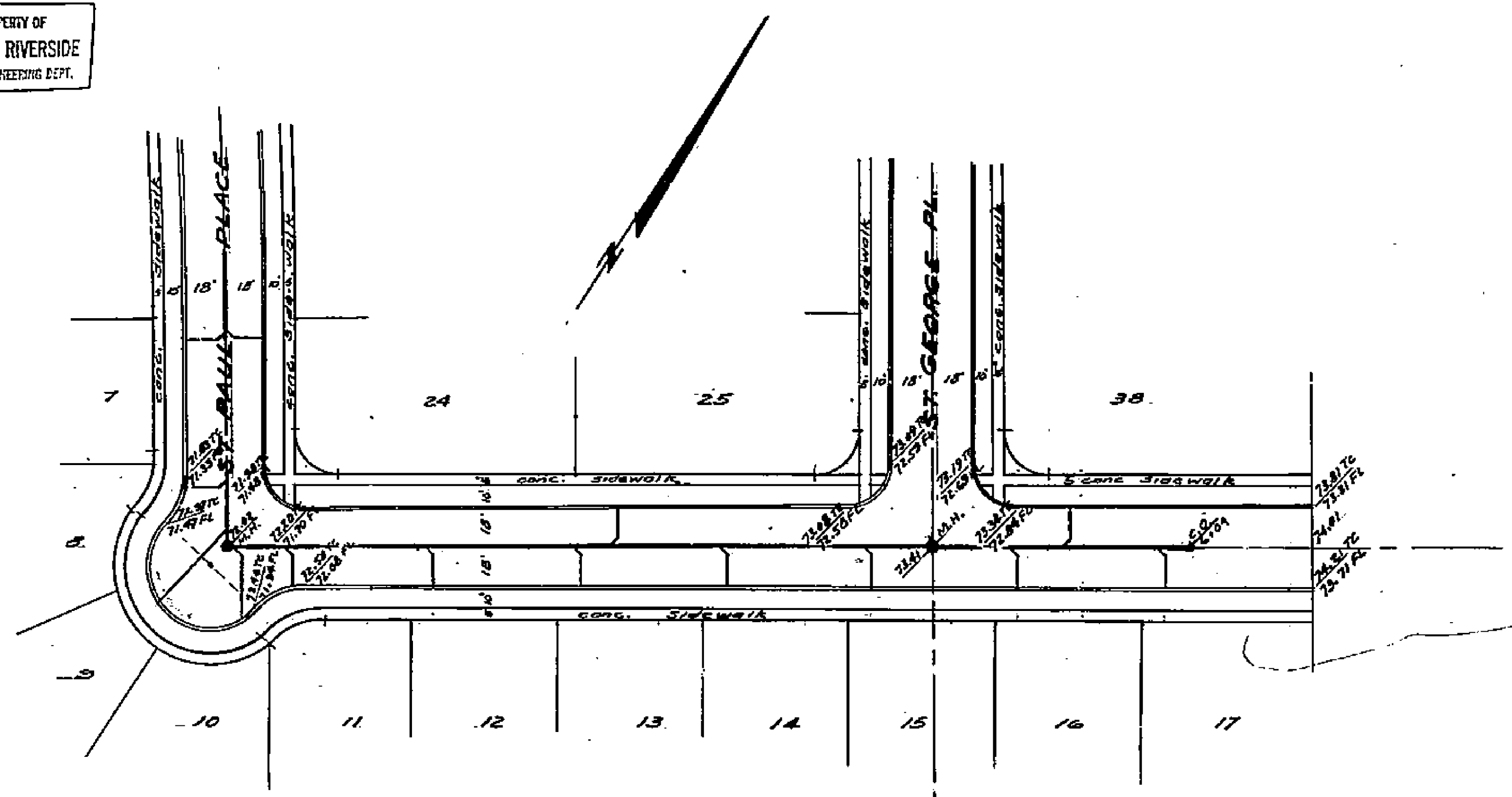
MAP MADE BY THE ENGINEERING DEPARTMENT OF THE CITY OF RIVERSIDE

MAP MADE BY THE ENGINEERING DEPARTMENT OF THE CITY OF RIVERSIDE

MAP MADE BY THE ENGINEERING DEPARTMENT OF THE CITY OF RIVERSIDE

PROPERTY OF
CITY OF RIVERSIDE
CITY ENGINEERING DEPT.

PROPERTY OF
CITY OF RIVERSIDE
CITY ENGINEERING DEPT.



Approved *M. H. [Signature]*
 1-23-34 City Engineer
 Revised 2-15-34
 Approved *M. H. [Signature]*
 City Engineer

PLAN & PROFILE
ST. PAUL PARK
E-W ST
 JANUARY 1934 J. R. DAVIDSON, C.E.
 SCALE
 HORZ. 1" = 40'
 VERT. 1" = 4'

PROPERTY OF
CITY OF RIVERSIDE
CITY ENGINEERING DEPT.

PROPERTY OF
CITY OF RIVERSIDE
CITY ENGINEERING DEPT.

1458

MADE IN U.S.A.
CLEARING PAPER CO.

MADE IN U.S.A.
CLEARING PAPER CO.

MADE IN U.S.A.
CLEARING PAPER CO.